

Cargo Monitoring Solutions



Product Catalogue





Emerson Cargo Solutions

helps retailers, suppliers, growers, shippers, exporters and restaurants ensure only the freshest and safest foods reach consumers. Our core technologies - coupled with our cold chain expertise - provide complete temperature monitoring solutions for our customers. We place data at your fingertips to make food quality and safety decisions easier and faster. Product offerings include real-time, wireless systems, as well as single-use data loggers.

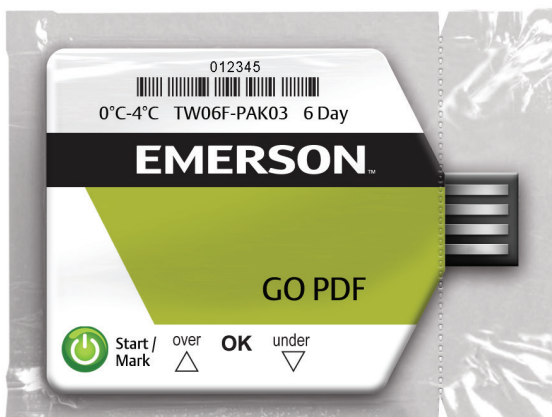
GO PDF Logger

Temperature monitoring logger

GO PDF Loggers are flat and feature an integrated USB connection point which can be plugged directly into the USB port of a computer. Once connected, the logger automatically generates a PDF file containing complete time and temperature history, including graphs and summary data.

Technical specifications

Alarm indicators:	LEDs indicate temp over/under/OK
Certifications:	FCC, FAA, IC, CE, RCM, RoHS, China RoHS, WEEE
Embedded CSV file:	Yes
Export to other applications:	Generates PDF on PC
NIST Traceable:	Yes
Operating environment:	-25°C to 60°C
Operating system:	Windows Vista, 7, 8, & 10 with Adobe Reader™ 9 or later
Shelf life:	15 months
Size:	61 mm x 85 mm
Temperature accuracy:	-25°C to 60°C : ±0.5°C
Time zone:	UTC in logger, reader converts to selected time zone
Waterproof rating:	1 meter for 1 hour
Weight:	14.2 g
In-use life:	Up to 90 days





XpressPDF™

Temperature monitoring logger



Xpress PDF digitally monitors time and temperature of perishable products during distribution and storage. Loggers are flat and feature an integrated USB connection point which can be plugged directly into the USB port of a computer. Once connected, the logger automatically generates a PDF file containing complete time and temperature history, including graphs and summary data. Xpress PDF eliminates the need for reading devices and proprietary software and are optimal for applications requiring fully independent operation.

Technical specifications

Certification:	RCM, RoHS, China RoHS
Embedded CSV file:	Yes
Export to other applications:	Generates PDF with embedded CSV on PC
NIST Traceable:	Yes
Operating environment:	-30°C to 70°C
Operating system:	Windows 8 and 10 with Adobe Reader™ version 9 or later
Shelf life:	15 months
Size:	58 mm x 36 mm x 5.4 mm
Temperature accuracy:	+/-0.5°C for -30°C to 70°C
Time zone:	UTC in logger, reader converts to selected time zone
Waterproof rating:	1 meter for 1 hour, IP67
Weight:	12 g
Recording interval:	5 minutes for 90 days; 10 minutes for 110 days
Memory:	25,920 data points
Battery life:	90 days or 110 days

GO NFC Logger

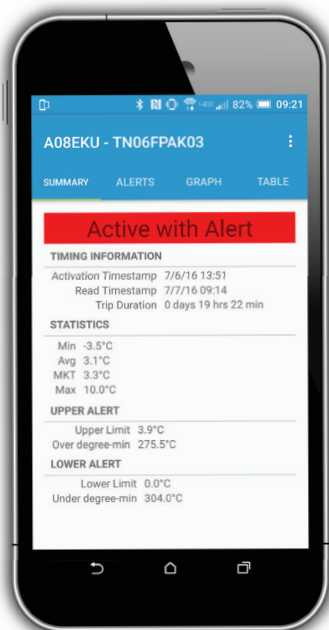
Time & temperature data through a mobile device



GO NFC Loggers are flat and transfer time/temperature data via short-range near field communications (NFC) using phones and tablets. Logger data is immediately available on the screen of the device via the mobile application.

Technical specifications

Alarm configurations:	Upper/lower/both/none, alerts may be consecutive (default) or cumulative
Alarm indicators:	LEDs indicate temp over/under/OK
Calibration:	Silicon based sensor is calibrated at the time of manufacture
Certifications:	FCC, IC, CE, RCM, Chile, Peru, RoHS, China RoHS, WEEE
Logger pouch/housing:	NEMA 6P/IP67 dust and water resistant; FDA 21 CFR compliant food-grade packaging
Memory:	4K EEPROM, 1922 hard data points
Mobile applications:	Label viewer (available from Google Play Store, company web site, QR code on logger)
NIST Traceable:	Yes
Operating environment:	-25°C to 60°C
Read range:	Up to 2" (5.08 cm)
Recycle options:	GO GreenSense™ program
Shelf life:	15 months
Size:	61 mm x 81 mm
Start delay:	Standard 30 minutes, configurable 0 to 1275 minutes
Supported readers:	Android™ 4.1 and newer with integrated NFC reader, NFC-enabled phones and tablets, contact reader
Temperature accuracy:	-25°C to 60°C : ±0.5°C
Temperature resolution:	0.1°C
Temperature sampling frequency:	1 minute
Temperature units:	°F and/or °C
Weight:	14.2 g



Scan the QR code and download the GO NFC Reader on your phone

GO TH Logger

Reusable temperature and humidity logger



Technical specifications

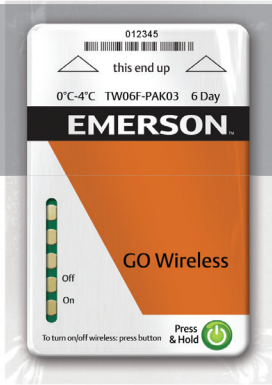
Operating humidity range:	0%RH to 100%RH; $\pm 3\%$ RH Accuracy
Humidity resolution:	0.01%RH
Temperature range:	-40°C to 80°C
Temperature accuracy:	$\pm 0.5^\circ\text{C}$, -10°C to 80°C $\pm 1^\circ\text{C}$ -40°C to -10°C
Temperature resolution:	0.01°C
Memory:	32,000 data points (16,000 RH%; 16,000 Temperature)
Recording interval:	1 minute to 24 hours° (programmable by user)
Start delay:	1 minutes to 24 hours° (programmable by user)
Shelf life:	Up to 15 months
Size:	8.6 cm x 2.8 cm x 1.2 cm
Weight:	35 g

GO TH Loggers record temperature and humidity levels. Both ranges are programmable via the TH Software and all units are reusable. The LED screen allows user to view the current time and most recent temperature and humidity readings and any alarm conditions. Humidity and temperature data collected by the loggers can be downloaded, graphed and saved electronically.



GO Systems

Inbound Temperature Monitoring



Inbound monitoring is self-contained, utilizes cellular networks, and does not require IT departments to oversee installation or ongoing maintenance. GO Wireless Loggers arrive at the location and are automatically uploaded by the readers. Temperature data is sent via a cellular modem to a cloud repository where text email alerts are created and delivered to predefined individuals.

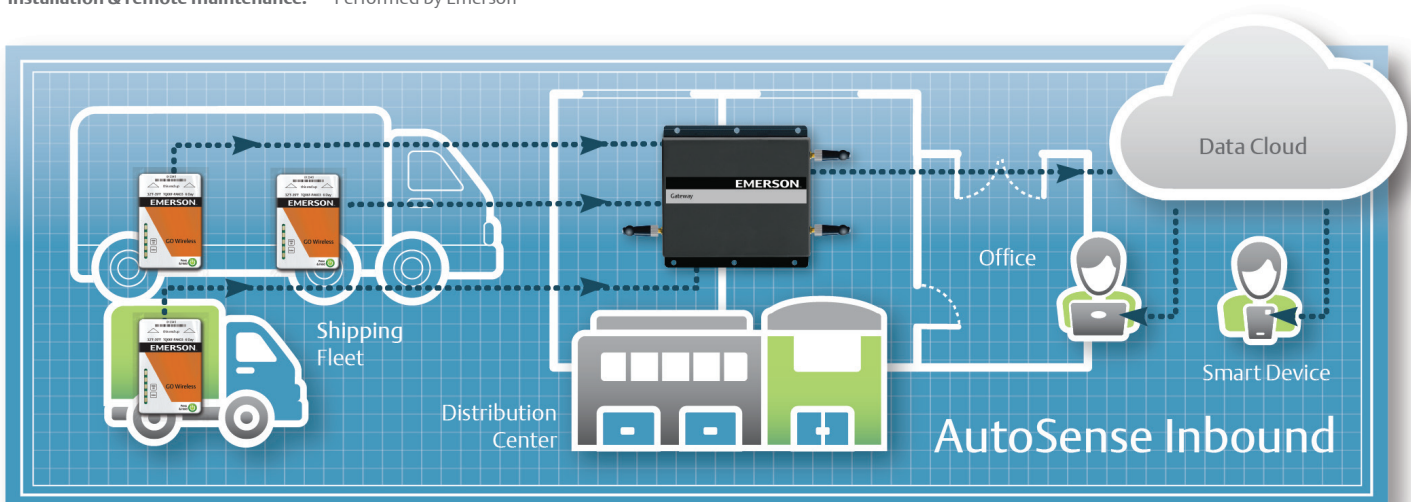
Technical specifications

GO Wireless Logger

Alarm configurations:	Upper/lower/both/none, alerts may be consecutive (default) or cumulative
Calibration:	Silicon based sensor is calibrated at the time of manufacture by Texas Instruments; NIST certificate of traceability available
Frequency:	US 915 MHz or EU 868 MHz
Housing:	NEMA 6P/IP67 dust and water resistant; FDA 21 CFR compliant food-grade packaging
In-use life:	Up to 60 days
Memory:	4K EEPROM, 1922 hard data points
Read range:	91 meters
Recycle options:	GO GreenSense™ program
Shelf life:	8 months (6, 15 day loggers) 6 months (30, 60 day loggers)
Size:	60 mm x 84 mm
Start delay:	Standard 30 minutes or configurable 0 to 1275 minutes
Temperature accuracy:	+/- 0.5 typical between -20°C to 60°C
Temperature resolution:	0.1°C
Temperature sampling frequency:	One minute with five minutes average
Weight:	17 g

Reader specifications

Certifications:	This equipment has been tested and found to comply with the limits for a class A digital device, pursuant to part 15 of the FCC rules
Connectivity:	Managed by Emerson
Frequency:	US 2.4 Ghz ISM WiFi frequency band; 3G multiband security mixed WPA/WPA2-PSK
Indicators:	Seven 3-color LEDs showing system status and signal strength
Internet connectivity:	Can utilize existing 802.11 WiFi or hardwire Ethernet connection at customer request
Power consumption:	<15 Watts, 110VAC
Read range:	90 meters, extended via additional meshing readers
Installation & remote maintenance:	Performed by Emerson



GO Real-Time 2G/3G Tracker

Temperature and location with dual mode 2G/3G coverage

Keeping track of shipments has never been easier with the GO Real-Time Tracker. Using cellular technology, GO trackers provide temperature and location alerts as your shipment moves through the supply chain. And now, with our dual-mode 2G/3G cellular technology, connectivity and access to your data is further enhanced. Rest assured that visibility to temperature and location data will be available despite the ongoing transition in the cellular technology industry.

The GO Real-Time 2G/3G Tracker provides global visibility at an affordable cost and fits in the palm of your hand. Simply pull the tab to activate the device, place in a container or trailer and input the serial number into the Oversight dashboard or mobile app to access the shipment data in real-time.



Battery life:	Dual-mode up to 15 days operation with 6-minute location and temperature measurements reported at 18-minute intervals
Cellular:	850/900/1800/1900 MHz Quadband GSM/GPRS
Certifications:	FCC, IC, PTCRB, CE, RCM
Humidity:	-20% to 90% operation, 10% to 95 storage
Backup memory:	Up to 6 days of continuous 6-minutes temperature measurements when outside cellular range
Recycle options:	GO GreenSense™ Program
Temperature range:	-20°C to 70°C operating environment -45°C to +85°C storage
Size:	78 mm x 52 mm x 20 mm
Weight:	68 g
Oversight dashboard:	Emerson.com/Oversight

GO Real-Time Lux 2G/3G Tracker

Temperature and location with dual-mode 2G/3G Coverage



GO Real-Time Lux Tracker detects unauthorized access to your high value assets during transit. Whether your cargo is at the border, a DOT checkpoint, or the receiver's dock, you know in real-time when and where your shipment is being accessed as well as the temperature of your product throughout the trip. And now, with our dual-mode 2G/3G cellular technology, connectivity and access to your data is further enhanced. Rest assured that visibility to temperature and location data will be available despite the ongoing transition in the cellular technology industry.

The GO Real-Time Lux 2G/3G Tracker provides global visibility at an affordable cost and fits in the palm of your hand. Simply pull the tab to activate the device, place in a container or trailer and input the serial number into the Oversight dashboard or mobile app to access the shipment data in real-time.

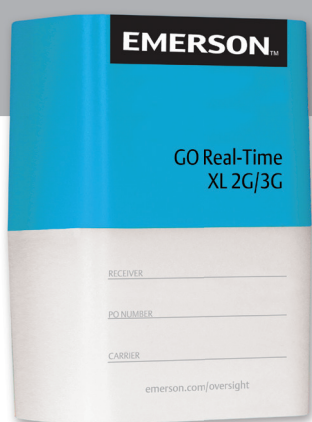
Technical specifications

Battery life:	Dual-mode up to 15 days operation with 6-minute location and temperature measurements reported at 18-minute intervals	Recycle options:	GO GreenSense™ program
Cellular:	850/900/1800/1900 MHz Quadband GSM/GPRS	Temperature range:	-20°C to 70°C operating environment -45° C to +85° C storage
Certifications:	FCC, IC, PTCRB, CE, RCM	Size:	78 mm x 52 mm x 20 mm
Humidity:	-20% to 90% operation, 10% to 95 storage	Weight:	68 g
Backup memory:	Up to 6 days of continuous 6-minutes temperature measurements when outside cellular range	Oversight dashboard:	Emerson.com/Oversight



GO Real-time XL 2G/3G Tracker

Temperature, location and security with dual-mode 2G/3G coverage



Extended battery life provides full coverage for your products on the road, in the port and out on the water. When your ship leaves port, the GO Real-Time XL keeps track of the temperature. Every time the ship nears port, the unit automatically connects and uploads data before the ship reaches the docks. And now, with our dual-mode 2G/3G cellular technology, connectivity and access to your data is further enhanced. Rest assured that visibility to temperature and location data will be available despite the ongoing transition in the cellular technology industry.

The GO Real-Time XL 2G/3G Tracker senses light when doors are opened and alerts you when your products are at risk on the road.

Technical specifications

Battery life:	Dual-mode with 60+ days of operation based on 60-minute reporting interval and temperature conditions	Recycle options:	GO GreenSense™ Program
Cellular:	850/900/1800/1900 MHz Quadband GSM/GPRS	Temperature range:	-20°C to 70°C operating environment -45°C to +85°C storage
Certifications:	FCC, IC, PTCRB, CE, RCM	Size:	78 mm x 52 mm x 35 mm
Humidity:	-20% to 90% operation, 10% to 95 storage	Weight:	136 g
Backup memory:	Up to 30 days of continuous 60-minute temperature measurements when outside cellular range	Oversight dashboard:	Emerson.com/Oversight



GO Real-Time Reusable

Temperature, location and security



GO Real-Time Reusable is a temperature monitoring solution that does not require fixed installation or hardware maintenance, with continuous coverage for your products over the road. The reusable solution is designed for customers who would like to reuse a tracker on multiple shipments. The GO Real-Time Reusable senses light, alerts you when your products are at risk on the road and records when doors are opened.

Technical specifications

Battery life:	Up to 60 days operation with 6-minute location and temperature measurements	Recycle options:	GO GreenSense™ Program
Battery:	5400 mAh battery size	Temperature range:	-20°C to 70°C operating environment -45°C to +85°C storage
Cellular:	850/900/1800/1900 MHz Quadband GSM/GPRS	Size:	78 mm x 52 mm x 35 mm
Certifications:	FCC, IC, PTCRB, CE, Anatel	Weight:	136 g
Humidity:	-20% to 90% operation, 10% to 95 storage	Oversight dashboard:	Emerson.com/Oversight
Backup memory:	Up to 30 days of continuous 60-minute temperature measurements when outside cellular range		

GO Tracker cloud systems

Oversight dashboard

Comprehensive and automated reporting is provided through the Oversight dashboard. Visit emerson.com/oversight and enter the GO Tracker serial number. Access real-time information about your shipment or login to your secure web portal and see all of your shipments at a glance.

Serial Number	Alert Type	Alert Duration	Escalation	Opened	Condition
<input type="checkbox"/> 801254684621899	Cloudbub	4/14/2015	Level 2	20%	\$25k
<input type="checkbox"/> 801254684621899	Trip End Proximity	4/14/2015	Level 3	20%	\$25k
<input type="checkbox"/> 801254684621899	Trip End Proximity	4/14/2015	Level 1	20%	\$25k
<input type="checkbox"/> 801254684621899	Trip End Proximity	4/14/2015	Level 1	20%	\$25k
<input type="checkbox"/> 801254684621899	Trip End Proximity	4/14/2015	Level 1	20%	\$25k
<input type="checkbox"/> 801254684621899	Trip End Proximity	4/14/2015	Level 1	20%	\$25k
<input type="checkbox"/> 801254684621899	Trip End Proximity	4/14/2015	Level 1	20%	\$25k
<input type="checkbox"/> 801254684621899	Trip End Proximity	4/14/2015	Level 1	20%	\$25k
<input type="checkbox"/> 801254684621899	Trip End Proximity	4/14/2015	Level 1	20%	\$25k

Oversight dashboard alerts

EMERSON Oversight Dashboard Map View List View Create a Shipment

Create a Shipment

Retailer: Select Customer

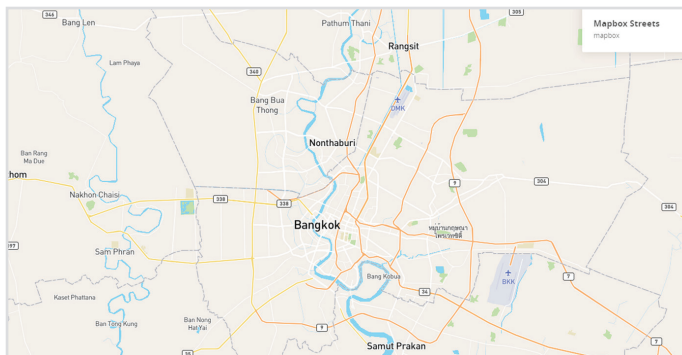
Trip Template: Select Template

Select Vehicle Group: Nursery DSA USA North South

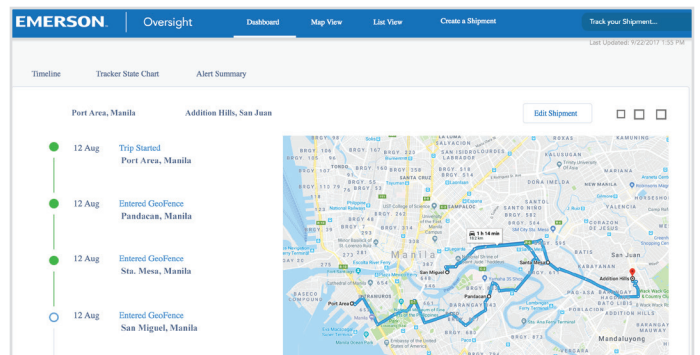
Enter Serial Number: Last 4 Digits

Enter Trip Name:

Oversight dashboard how to create a shipment



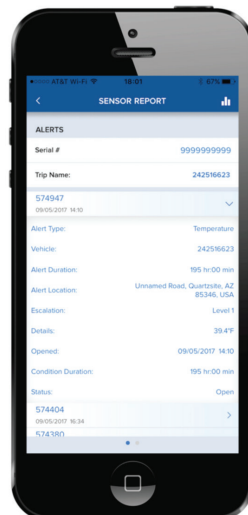
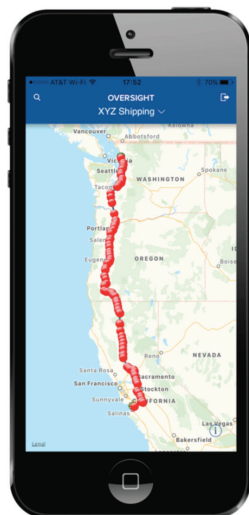
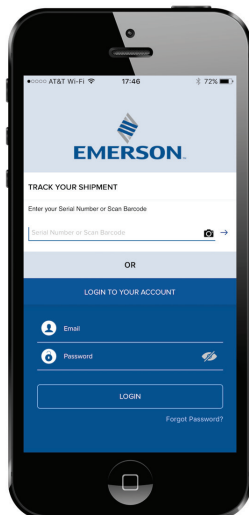
Oversight dashboard alert details and map view



Oversight dashboard trip information and map View

Oversight mobile

Oversight mobile enables you to view critical shipment details including temperature and location in real-time, direct from your smartphone. GO Trackers are placed on perishable shipments and communicate data via cellular connectivity. Simply open the Oversight mobile app to view data or set up alerts to be sent directly to your smartphone. Available on Android and iOS devices



Scan the QR code and download the Emerson Oversight on your phone

General Information

Technical data are correct at the time of printing. Updates may occur, and should you need confirmation of a specific value, please contact Emerson clearly stating the information required.

Emerson cannot be held responsible for errors in capacities, dimensions, etc., stated herein. Products, specifications and data in this literature are subject to change without notice.

The information given herein is based on data and tests which Emerson believes to be reliable and which are in accordance with today's technical knowledge. It is intended for use by persons having the appropriate technical knowledge and skill, at their own discretion and risk. Our products are designed and adapted for fixed locations. For mobile applications, failures may occur.

The suitability for this has to be assured from the plant manufacturer, which may include making appropriate tests.

NOTE: The components listed in this catalogue are not released for use with caustic, poisonous or flammable substances. Emerson cannot be held responsible for any damage caused by using these substances.

About Emerson

Emerson (NYSE: EMR), headquartered in St. Louis, Missouri (USA), is a global technology and engineering company providing innovative solutions for customers in industrial, commercial, and residential markets. Our Emerson Automation Solutions business helps, hybrid, and discrete manufacturers maximize production, protect personnel and the environment while optimizing their energy and operating costs. Our Emerson Commercial and Residential Solutions business helps ensure human comfort and health, protect food quality and safety, advance energy efficiency, and create sustainable infrastructure. For more information visit [Emerson.com](https://www.emerson.com).

Contact Lists

Asia Pacific Headquarters

Suite No. 2503-8, 25/F,
Exchange Tower, 33 Wang Chiu Road,
Kowloon Bay, Kowloon, Hong Kong
Tel: (852) 2866 3108
Fax: (852) 2520 6227

Australia

356 Chisholm Road
Auburn NSW 2144, Australia
Tel: (612) 9795 2800
Fax: (612) 9738 1699

China - Beijing

Beijing Sales Office

Room 1017 JianWei Building,
66 Nan Lishi Road, XiCheng District,
Beijing, PRC
Tel: (8610) 5763 0488
Fax: (8610) 5763 0499

China - Guangzhou

Guangzhou Sales Office

508-509 R&F Yinglong Plaza,
No. 76 Huangpu Road West,
Guangzhou, PRC
Tel: (8620) 2886 7668
Fax: (8620) 2886 7622

China - Shanghai

Shanghai Sales Office

7F, Emerson Building, 1582 Gumei
Rd, Shanghai, PRC
Tel: (8621) 3338 7333

India - Mumbai

Delphi B-Wing, 601-602, 6th Floor
Central Avenue, Hiranandani Business Park,
Powai, Mumbai 400076
Tel: (9122) 6786 0793
Fax: (9122) 6662 0500

India - Pune

Plot No. 23, Rajiv Gandhi Infotech Park,
Phase - II, Hinjewadi,
Pune 411 057, Maharashtra, India
Tel: (9120) 4200 2000
Fax: (9120) 4200 2099

Indonesia

BSD Taman Tekno 8
Jl. Tekno Widya Blok H10 No 2 & 3
Tangerang Selatan 15314
Indonesia
Tel: (6221) 2966 6242
Fax: (6221) 2966 6245

Japan

Shin-yokohama Tosho Building
No. 3-9-5 Shin-Yokohama, Kohoku-ku
Yokohama 222-0033 Japan
Tel: (8145) 475 6371
Fax: (8145) 475 3565

Malaysia

Level M2, Blk A, Menara PKNS-PJ
Jalan Yong Shook Lin
46050 Petaling Jaya, Selangor, Malaysia
Tel: (603) 7949 9222
Fax: (603) 7949 9333

Middle East & Africa

PO Box 26382
Jebel Ali Free Zone - South
Dubai, UAE
Tel: (9714) 811 8100
Fax: (9714) 886 5465

Philippines

10/F SM Cyber West Avenue, EDSA cor. West
Avenue, Barangay Bungad, Diliman, Quezon
City 1105 Philippines
Tel: (632) 689 7200

Saudi Arabia

PO Box 34332 - 3620 Building 7874
Unit 1, 67th street 2nd Industrial City
Dammam, Saudi Arabia
Toll Free: 800 844 3426
Tel: +966 3 8147560
Fax: +966 3 8147570

South Korea

3F, The Pinnacle Gangnam 343,
Hakdong-ro, Gangnam-gu,
Seoul 06060, Republic of Korea
Tel: (822) 3483 1500
Fax: (822) 592 7883

Taiwan

3F No. 122 Lane 235,
Pao Chiau Rd., XinDian Dist.,
New Taipei City 23145, Taiwan (R.O.C.)
Tel: (8862) 8912 1360
Fax: (8862) 8912 1890

Thailand

34th Floor, Interlink Tower,
1858/133, Bangna Trad,
Bangkok 10260, Thailand
Tel: (662) 716 4700
Fax: (662) 751 4241

United Arab Emirates

PO Box 26382
Dubai UAE
Toll Free: 800 441 3428
Tel: +971 4 811 8100
Fax: +971 4 886 5465

Vietnam

Level 6, Melinh Point Tower, 2 Ngo Due Ke,
District 1, Ho Chi Minh City
Vietnam
Tel: (84) 908 009 189

Technical Support is available 24 hours a day, 7 days a week.
We're with you every step of the way.

Toll Free: +1-877-998-7299 | Direct: +1-877-832-07200 | Email: CargoAsia@Emerson.com

Emerson.com

Emerson is a trademark of Emerson Electric Co. or one of its affiliated companies. ©2018 Emerson Electric Co. All rights reserved.

Scan to visit:



Emerson Asia



Cargo Solutions



@EmersonComResAP

EMERSON. CONSIDER IT SOLVED.™