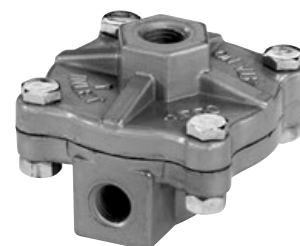
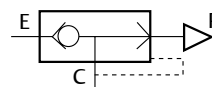


Features

- Compact, 3-ported valves have oversized orifice for quick exhaust of cylinders, brakes, actuators, clutches, etc.
- The valves are recommended for pilot applications with high flow, wide pressure ranges and quick exhaust flow
- Allow use of smaller pipe lines and control components
- When used as a shuttle valve, high pressure from the two inlets exits through the common outlet
- Special execution for low ambient temperatures
- Mountable in any position
- The quick exhaust valves satisfy all relevant EC Directives



General

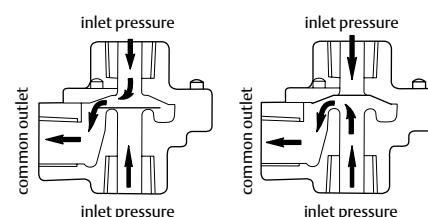
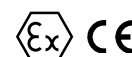
Differential pressure 0,35 - 10,0 bar [1 bar = 100kPa]
Maximum viscosity 65cST (mm²/s)
Response times 50 - 100 ms

fluids (*)	temperature range (TS)	seal materials (*)
air, inert gas	-20°C to + 80°C -40°C to + 85°C	NBR (nitrile) TPE (thermoplastic elastomer)

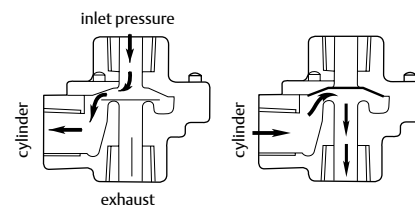
Materials in contact with fluid

(*) Ensure that the compatibility of the fluids in contact with the materials is verified

	Zinc body	Stainless steel body
Body	Die-Cast zinc	AISI 300 SS
Bonnet	Die-Cast zinc	AISI 300 SS
Sealings	NBR	NBR
Diaphragm	NBR	TPE



shuttle valve
flow diagram



quick exhaust valve
flow diagram

Specifications

pipe size	flow coefficient Kv				operating pressure differential (bar)		basic catalogue number		type
	port				min.	max. (PS)			
	P → C	C → E	P → C	C → E			air (*)		
NPT	(m³/h)		(l/min)				zinc	stainless steel	
Zinc body									
1/8	0,6	0,7	10,0	11,7	0,35	8,6	V043A005	-	01
1/4	0,7	0,9	11,7	15,0	0,35	8,6	V043A006	-	01
1/4	1,7	1,7	28,3	28,3	0,35	8,6	V043A001	-	02
3/8	3,0	3,9	50,0	65,0	0,35	8,6	V043A002	-	02
Stainless Steel body									
1/4	0,7	1,2	11,7	20,0	1,0	10,0	-	V043A051	03

Suffix table

suffix					description
1	2	3	4	5	
G	D				ATEX non-electrical, 2 GD c, construction safety, gas/dust (EN 13463-5)

Product selection guide

STEP 1

Select basic catalogue number.

Refer to the specifications table on page 1.

Example: V043A051

STEP 2

Select suffix (combination) if required.

Refer to the suffix table on page 2.

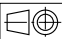
Example: GD

STEP 3

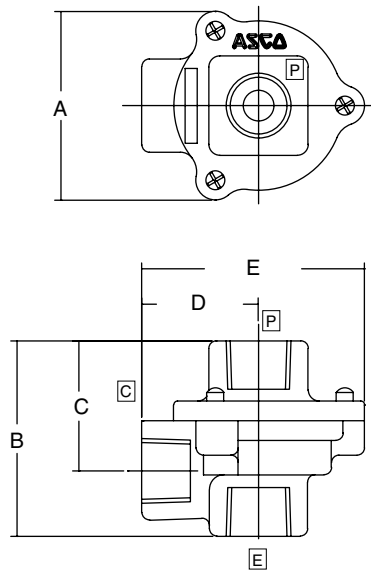
Final catalogue / ordering number.

Example:

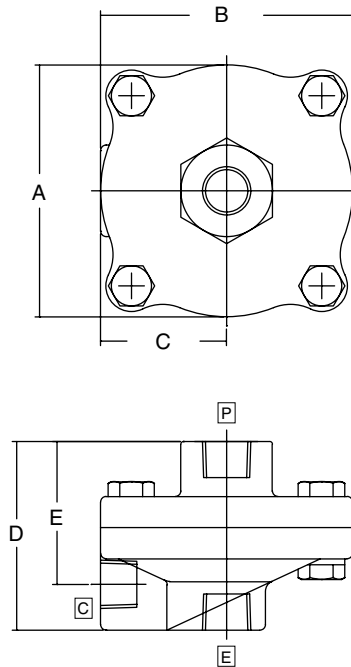
V043A051GD

Dimensions (mm), Weight (kg) 

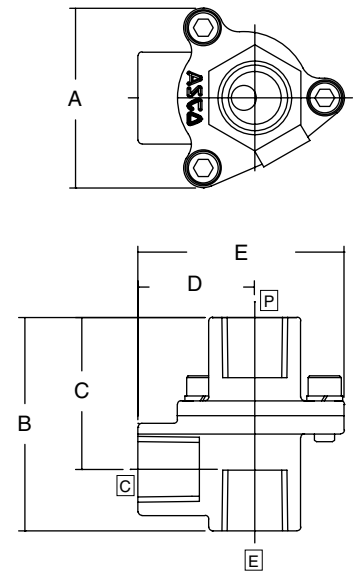
Type 01



Type 02



Type 03



type	A	B	C	D	E	weight
01	40	40	27	24	46	0,15 kg
02	70	70	35	52	40	0,25 kg
03	37	44	31	24	43	0,45 kg

Installation

- Installation/maintenance instructions are included with each valve
- The valves can be mounted in any position without affecting operation
- Threaded pipe connection identifier is B = NPT (ANSI 1.20.3)
- Declarations of conformity are available on request

80442GB-2021/R01 -- Availability, design and specifications are subject to change without notice. All rights reserved.