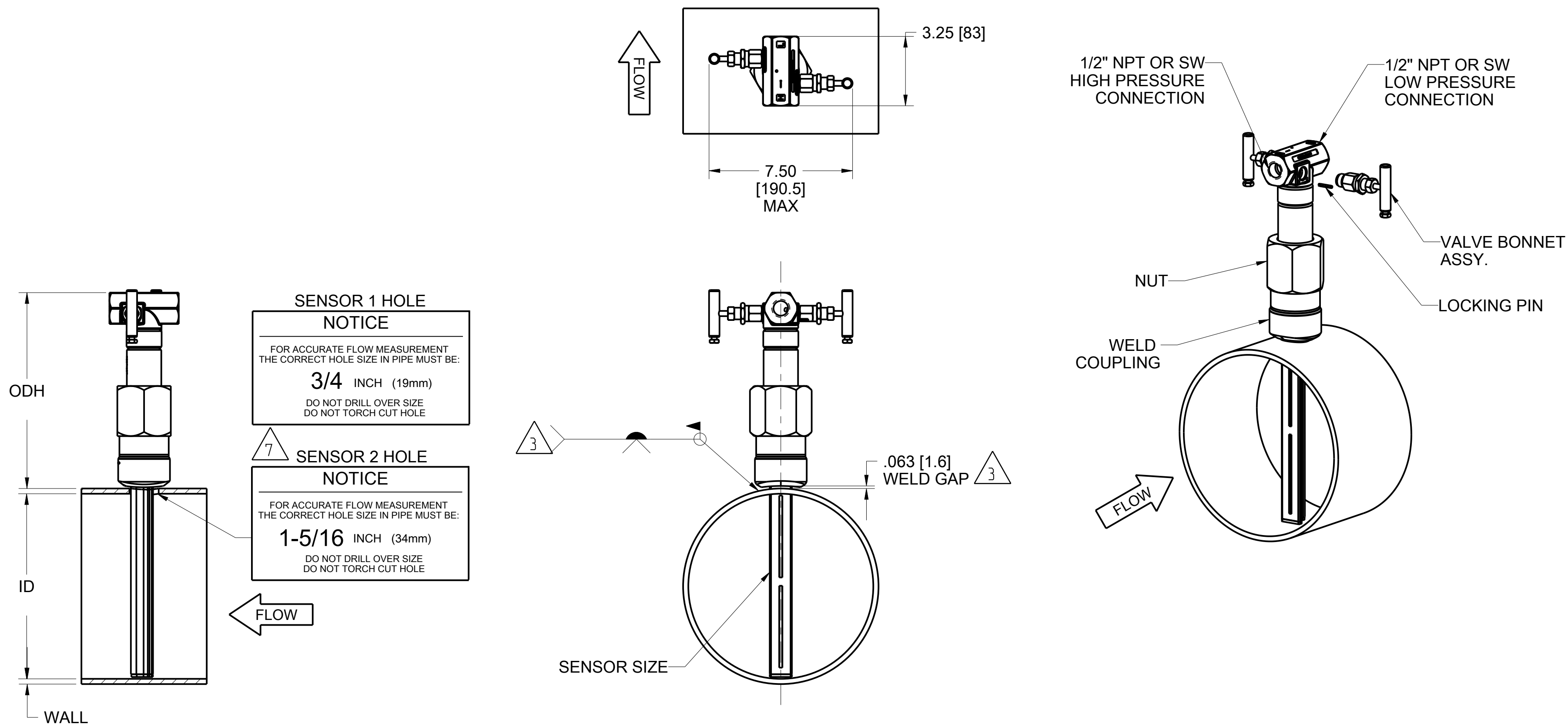


TABLE 1 - THREADED ANNUBAR			
SENSOR SIZE	MIN. ROD REYNOLDS	SENSOR WIDTH	ODH (MAX.)
SIZE 1	6500	.590 (14.99)	8.50 (215.9)
SIZE 2	12500	1.060 (26.92)	11.00 (279.4)

REVISION TABLE			
REVISION	ECO NO.	APP'D	DATE
AA	DS11056299	JS	10/14/20
DESCRIPTION			
INITIAL RELEASE			



SENSOR 1 HOLE NOTICE
 FOR ACCURATE FLOW MEASUREMENT THE CORRECT HOLE SIZE IN PIPE MUST BE:
3/4 INCH (19mm)
 DO NOT DRILL OVER SIZE
 DO NOT TORCH CUT HOLE

SENSOR 2 HOLE NOTICE
 FOR ACCURATE FLOW MEASUREMENT THE CORRECT HOLE SIZE IN PIPE MUST BE:
1-5/16 INCH (34mm)
 DO NOT DRILL OVER SIZE
 DO NOT TORCH CUT HOLE

- NOTES:
- ROSEMOUNT INC. CERTIFIES THIS DRAWING IS IN ACCORDANCE WITH ROSEMOUNT ENGINEERING SPECIFICATIONS AND ACCURATELY REPRESENTS THE EQUIPMENT FURNISHED.
 - ALL ORIENTATIONS SHOWN FOR REFERENCE ONLY. FOR ACTUAL RECOMMENDED LOCATIONS AND ORIENTATIONS REFER TO INSTALLATION INSTRUCTION MANUAL 00809-0100-4809, QUICK START GUIDE (QSG) 00825-0706-4809.
 - FIELD WELD. REFER TO INSTALLATION INSTRUCTIONS FOR WELDING REQUIREMENTS.
 - MAXIMUM PRESSURE: CL600 ANSI EQUIVALENT (1440PSIG AT 100° F / 9928.5Kpa g at 37.8° C) FOR 316SS.
 - MAX TEMPERATURE: 450° F (232° C) FOR REMOTE TRANSMITTER MOUNTING WITH TWO INTEGRATED VALVES
 600° F (315° C) FOR REMOTE TRANSMITTER MOUNTING WITHOUT INTEGRATED VALVES
 - FOR MODEL SELECTIONS, REFER TO ROSEMOUNT PRODUCT DATA SHEETS.
 - DRILL SENSOR HOLE SIZE REFER TO QSG TABLE 3 (00825-0700-4809 OR 00825-0706-4809).

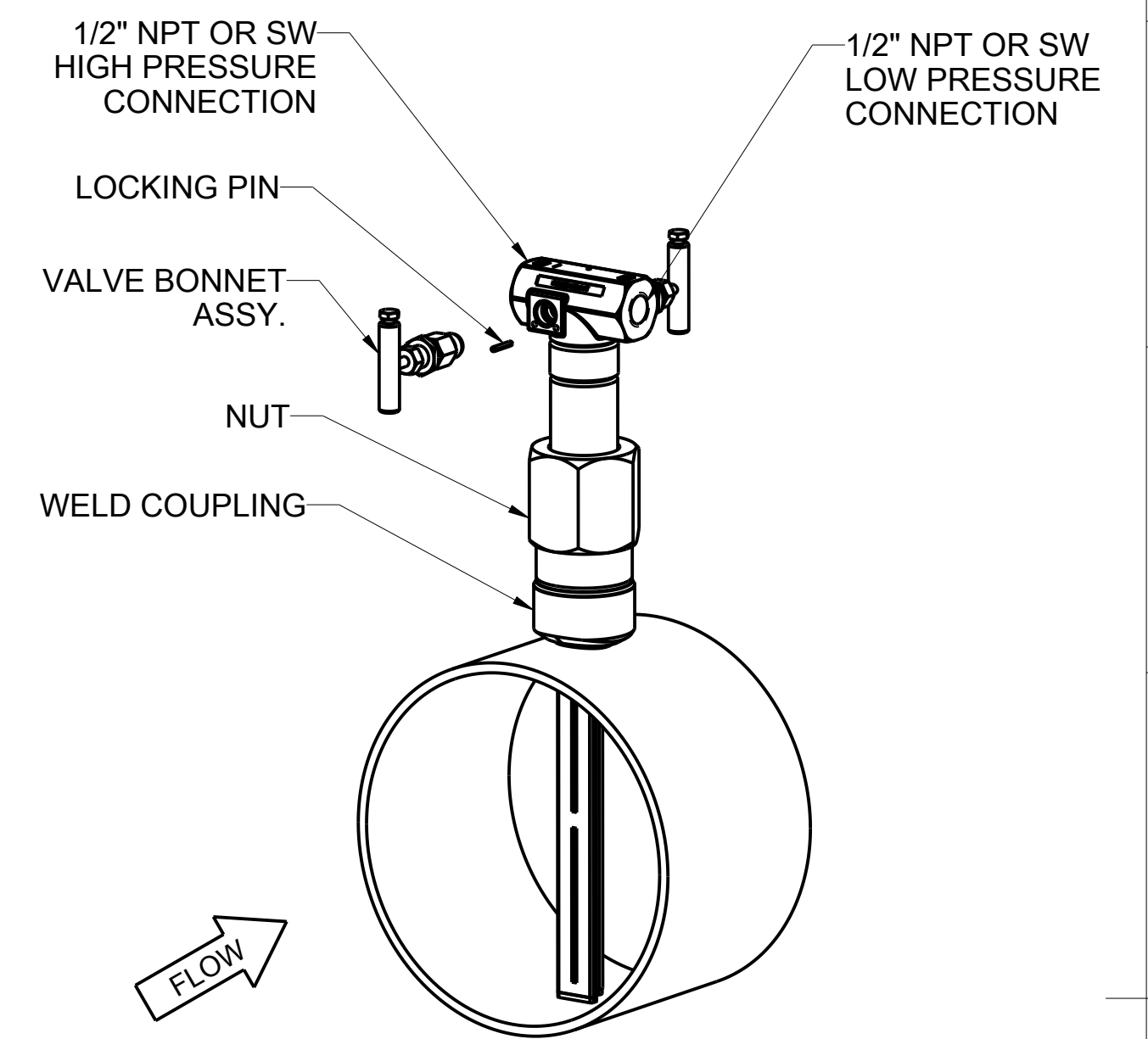
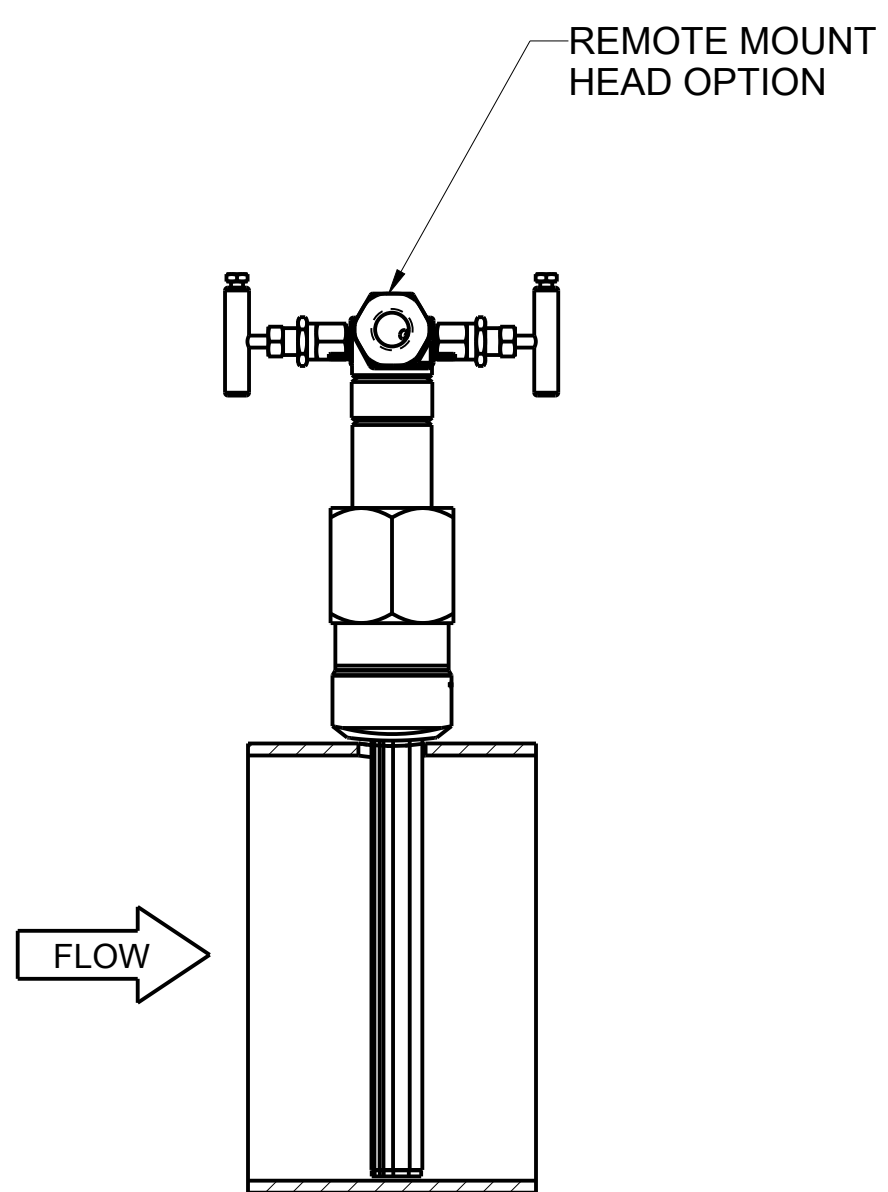
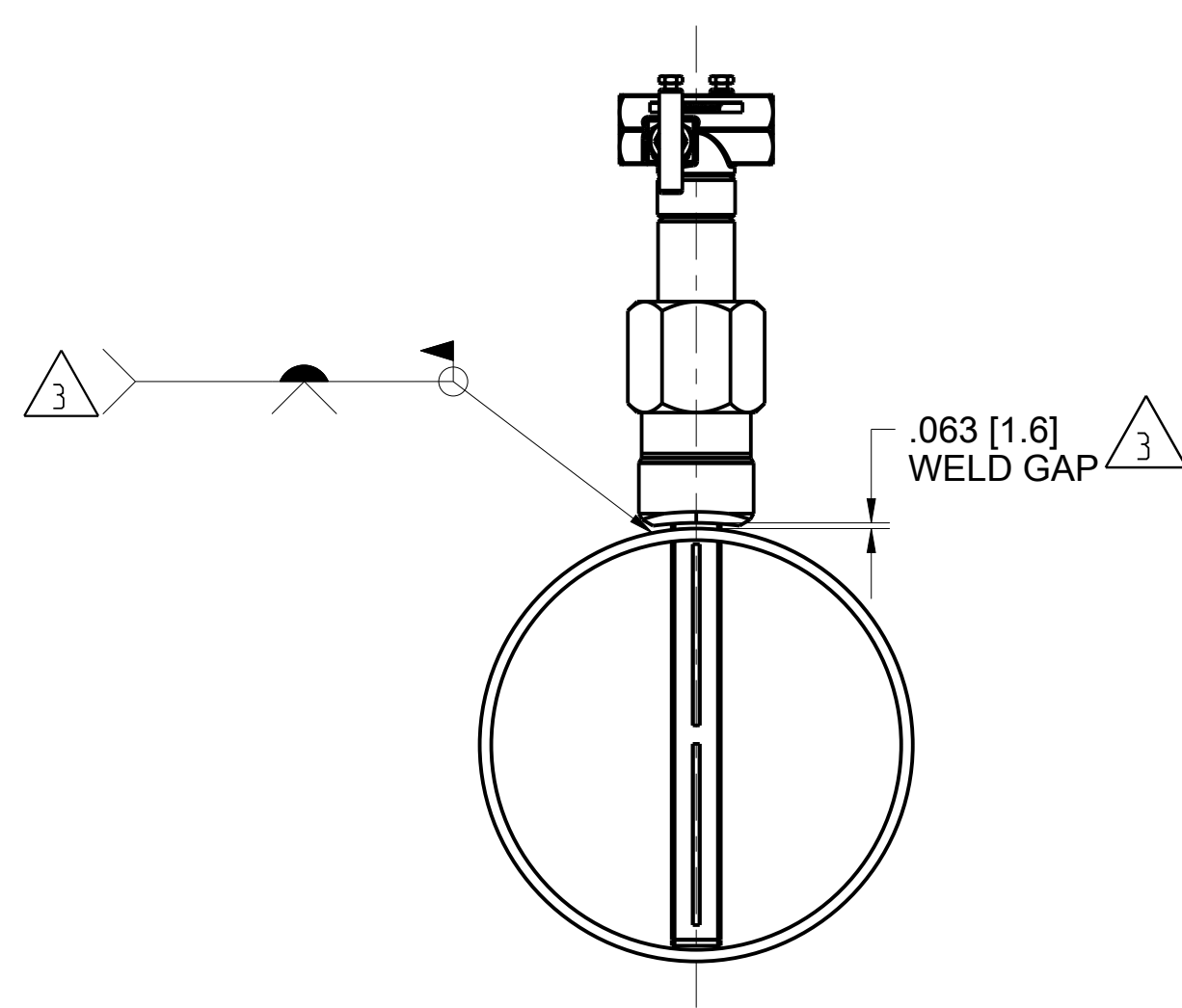
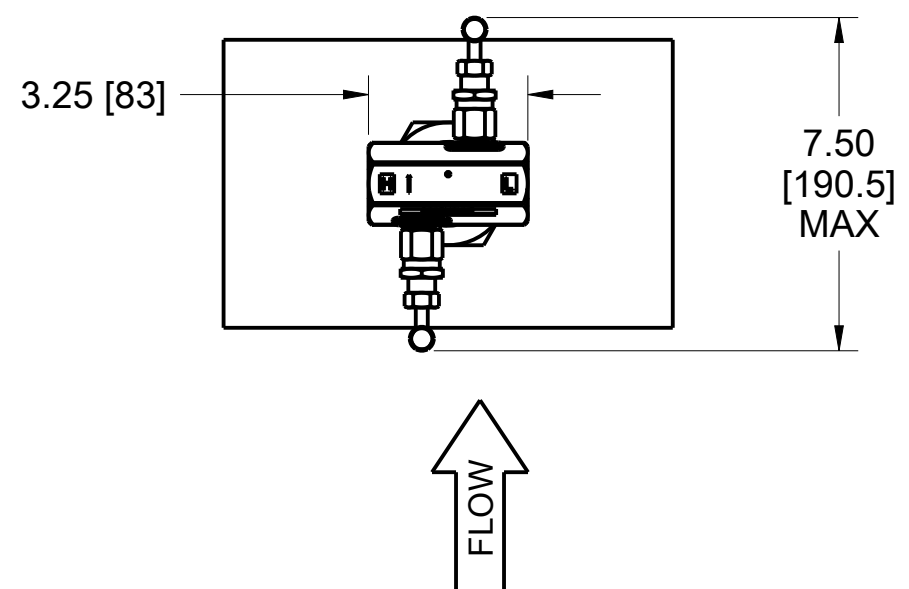
**THREADED
 HORIZONTAL FLOW WITH INTEGRATED VALVES
 REMOTE MOUNT
 INSTRUMENT CONNECTION**

NOTE: UNLESS OTHERWISE SPECIFIED ALL INFORMATION IS BOTH TYPICAL & GENERAL TO STANDARD PRODUCT DESIGN ALL PIPE SECTIONS SHOWN FOR REFERENCE ONLY

CONFIDENTIAL AND PROPRIETARY INFORMATION IS CONTAINED HEREIN AND MUST BE HANDLED ACCORDINGLY.	SURFACE FINISH UNLESS OTHERWISE SPECIFIED 125 3RD ANGLE	SIZE C	SCALE 1/14	REV AA
UNLESS OTHERWISE SPECIFIED DIMENSIONS IN INCHES (mm). REMOVE ALL BURRS AND SHARP EDGES.		ROSEMOUNT 8200 Market Boulevard - Chanhassen, MN 55317 USA		
-DEC TOLERANCES- .X ± .1 [2.5] .XX ± .02 [0.5] .XXX ± .010 [0.25]		TITLE DIMENSION DRAWING, MODEL 485 ANNUBAR (THREADED 150# - 600# ANSI)		
FRACTIONS ± 1/32	ANGLES ± 2°	DR. ZM 11/2/15	DRAWING NO. 00485-1019	
DO NOT SCALE PRINT CAD MAINTAINED. (PRO/E)		APP'D HCY 11/3/15	SHEET 1 OF 4	

DRAWING NO. 00485-1019

Electronic Master - Printed Copies Uncontrolled - Rosemount Proprietary

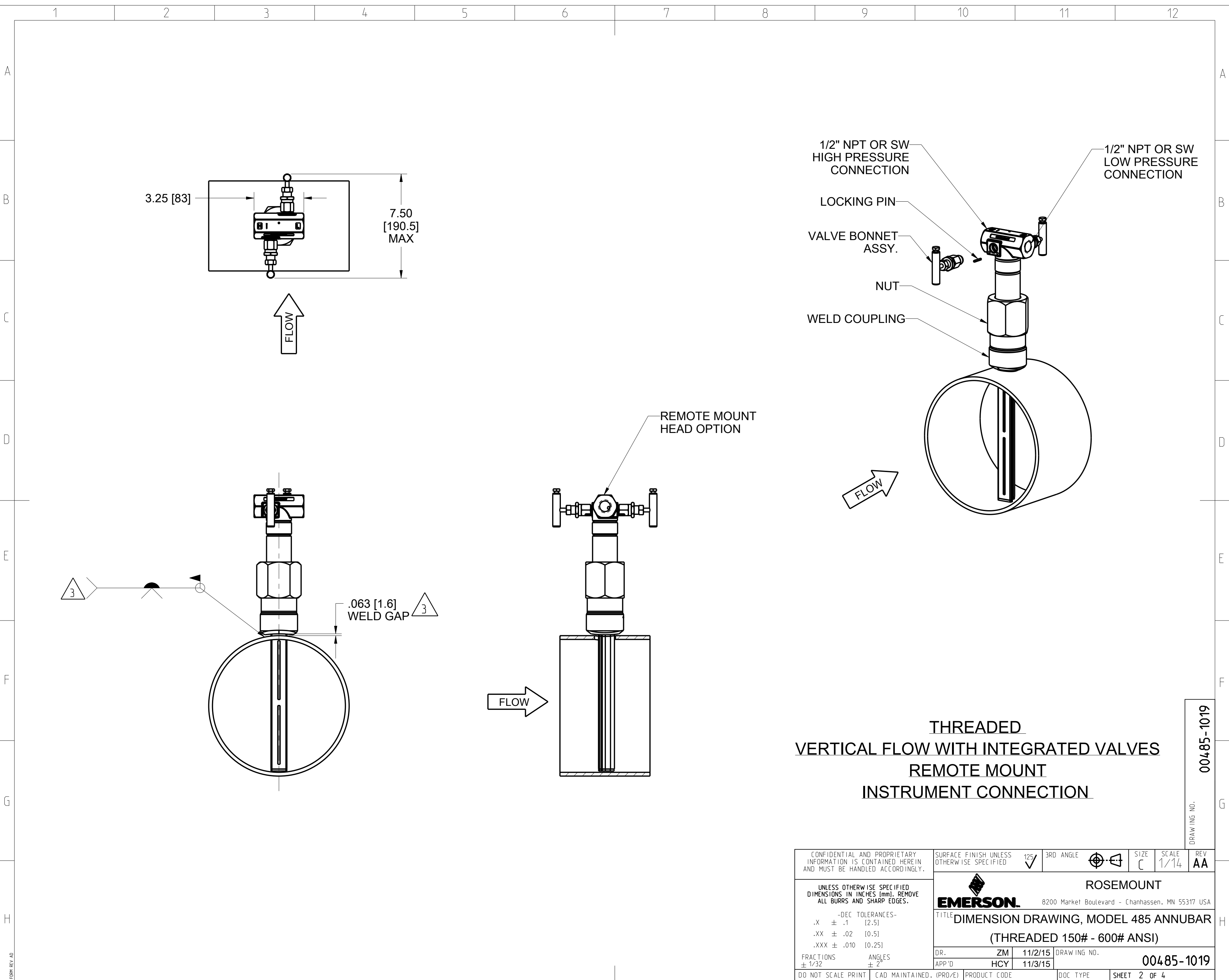


**THREADED
VERTICAL FLOW WITH INTEGRATED VALVES
REMOTE MOUNT
INSTRUMENT CONNECTION**

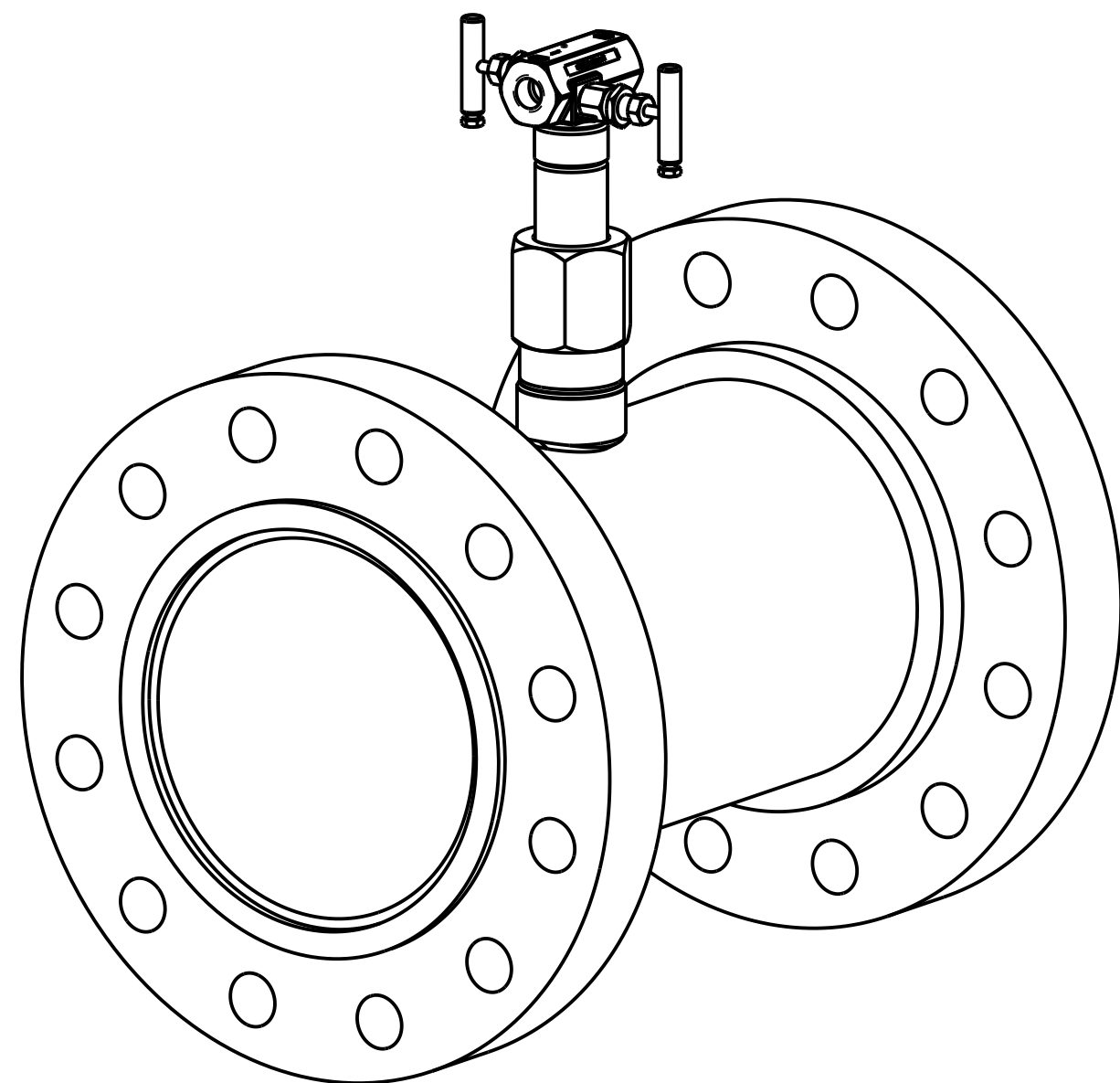
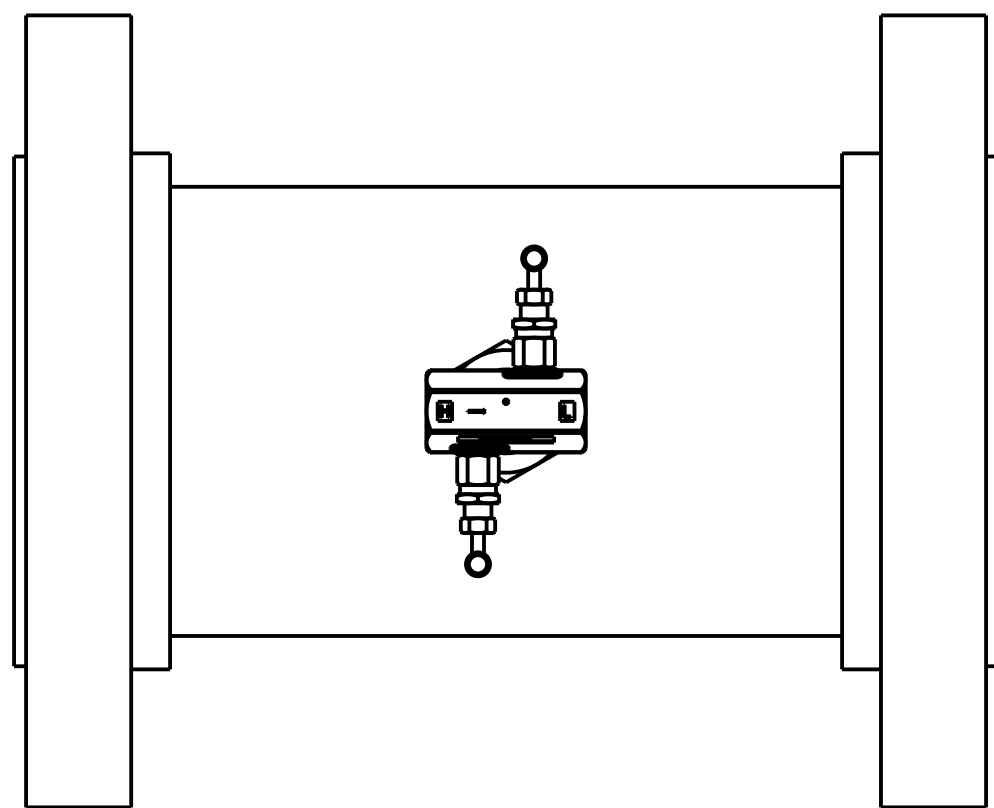
DRAWING NO. 00485-1019

CONFIDENTIAL AND PROPRIETARY INFORMATION IS CONTAINED HEREIN AND MUST BE HANDLED ACCORDINGLY.		SURFACE FINISH UNLESS OTHERWISE SPECIFIED		125	3RD ANGLE		SIZE C	SCALE 1/14	REV AA
UNLESS OTHERWISE SPECIFIED DIMENSIONS IN INCHES (mm). REMOVE ALL BURRS AND SHARP EDGES.		EMERSON ROSEMOUNT 8200 Market Boulevard - Chanhassen, MN 55317 USA							
-DEC TOLERANCES-		TITLE DIMENSION DRAWING, MODEL 485 ANNUBAR (THREADED 150# - 600# ANSI)							
.X ± .1 [2.5]	.XX ± .02 [0.5]	DR. ZM		11/2/15		DRAWING NO. 00485-1019			
.XXX ± .010 [0.25]	FRACTIONS ± 1/32	APP'D HCY		11/3/15					
ANGLES ± 2°		DO NOT SCALE PRINT		CAD MAINTAINED. (PRO/E)		PRODUCT CODE		DOC TYPE SHEET 2 OF 4	

Electronic Master - Printed Copies Uncontrolled - Rosemount Proprietary

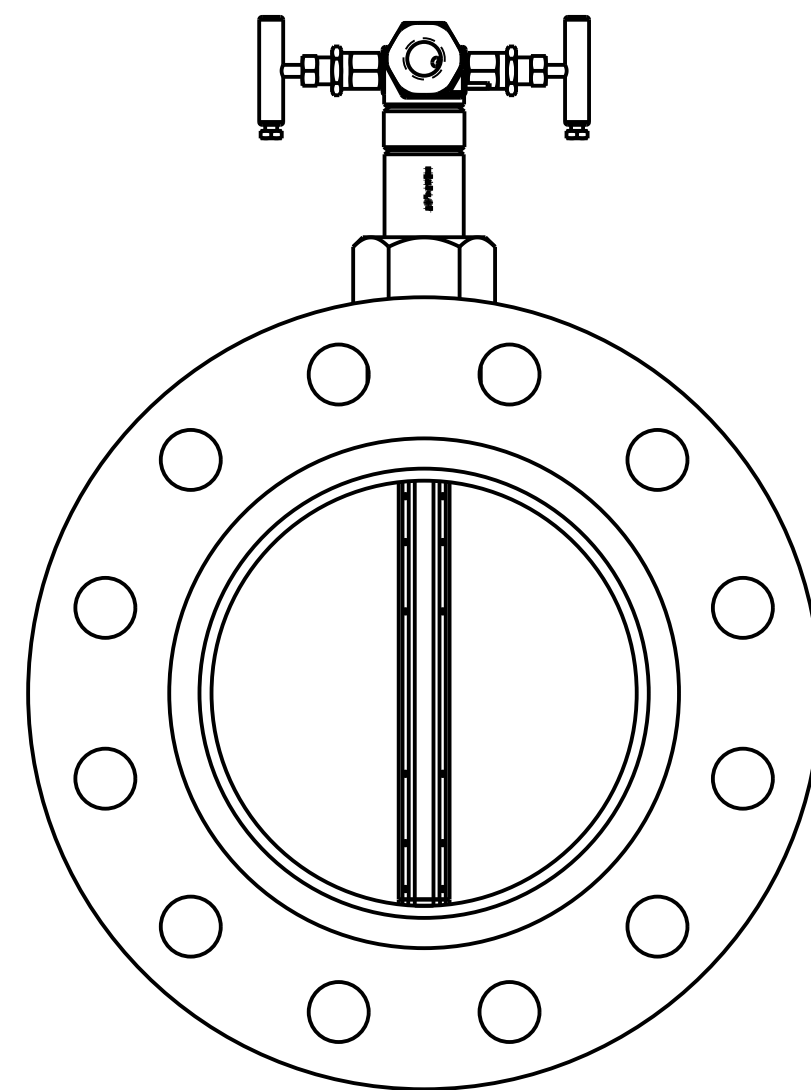
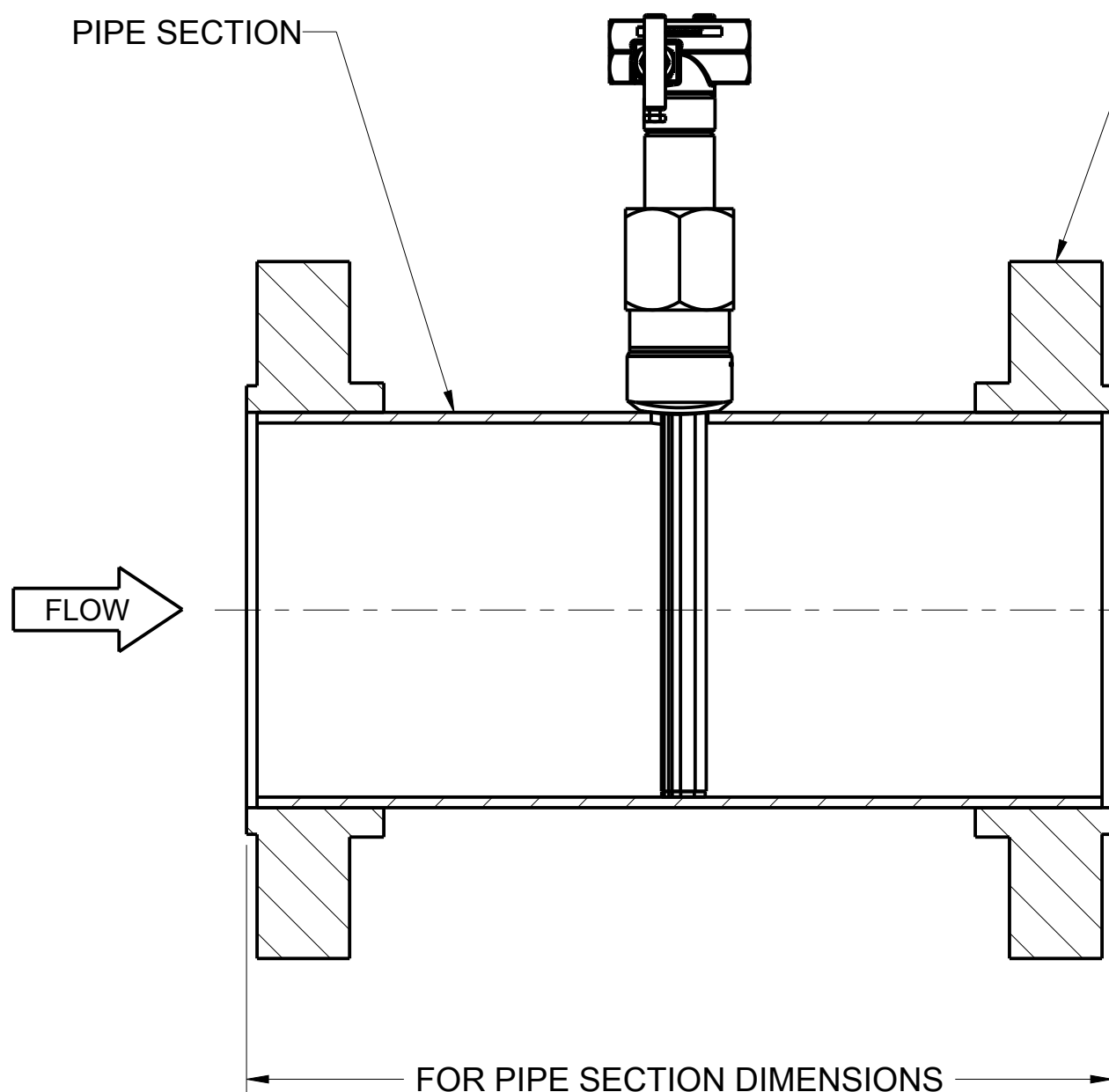


FLOW



PIPE SECTION

(2) FLANGED CONNECTION



INSTALLED IN FLANGED PIPE SPOOL SECTION

00485-1019

DRAWING NO.

CONFIDENTIAL AND PROPRIETARY INFORMATION IS CONTAINED HEREIN AND MUST BE HANDLED ACCORDINGLY.		SURFACE FINISH UNLESS OTHERWISE SPECIFIED		125	3RD ANGLE		SIZE	SCALE	REV
UNLESS OTHERWISE SPECIFIED DIMENSIONS IN INCHES (mm). REMOVE ALL BURRS AND SHARP EDGES.		EMERSON		ROSEMOUNT 8200 Market Boulevard - Chanhassen, MN 55317 USA					
-DEC TOLERANCES-		TITLE DIMENSION DRAWING, MODEL 485 ANNUBAR (THREADED 150# - 600# ANSI)							
.X	± .1	[2.5]	DR.		ZM	11/2/15	DRAWING NO.		
.XX	± .02	[0.5]	APP'D		HCY	11/3/15	00485-1019		
.XXX	± .010	[0.25]	DO NOT SCALE PRINT		CAD MAINTAINED. (PRO/E)	PRODUCT CODE	DOC TYPE	SHEET 3 OF 4	

THREADED MOUNTING DETAIL

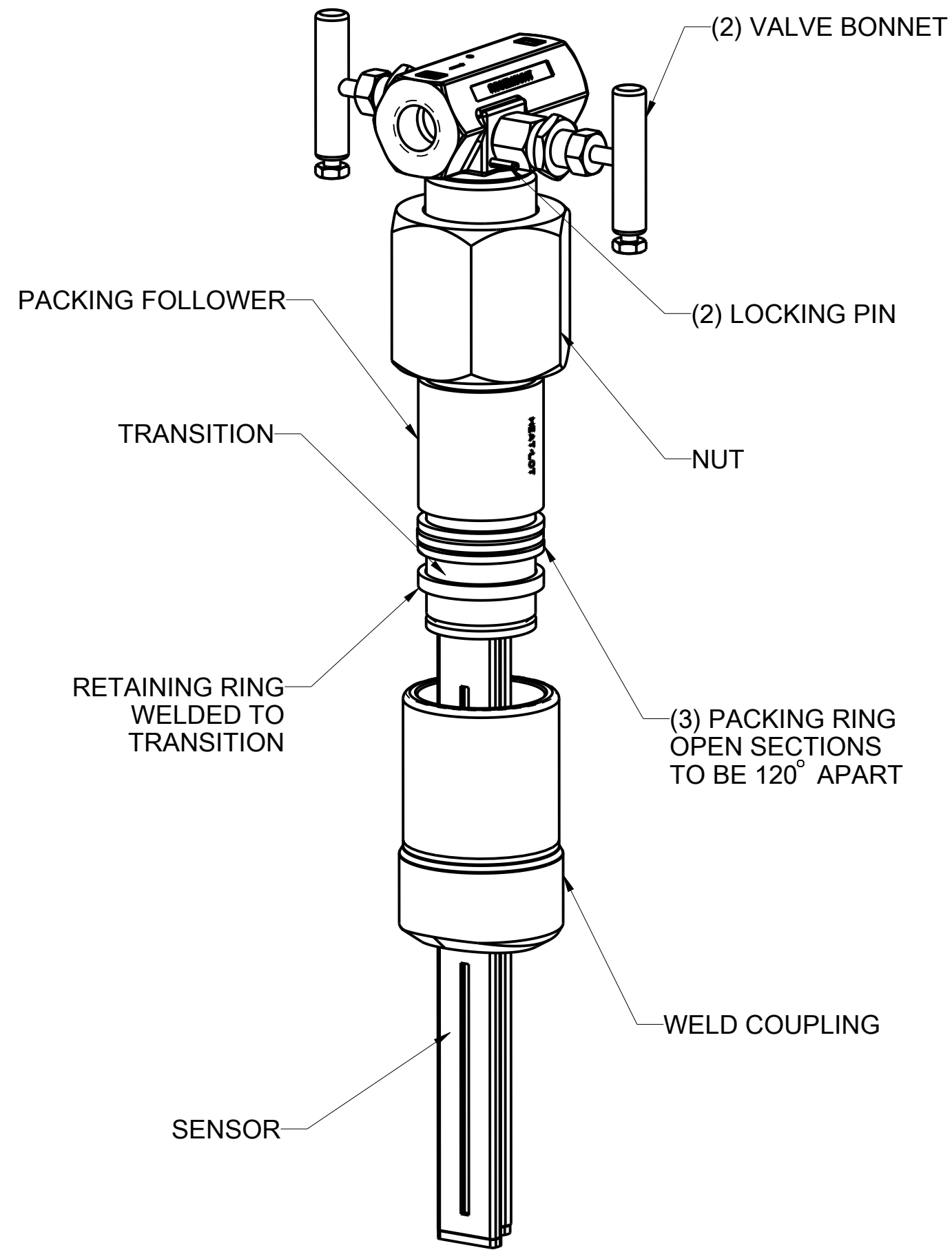
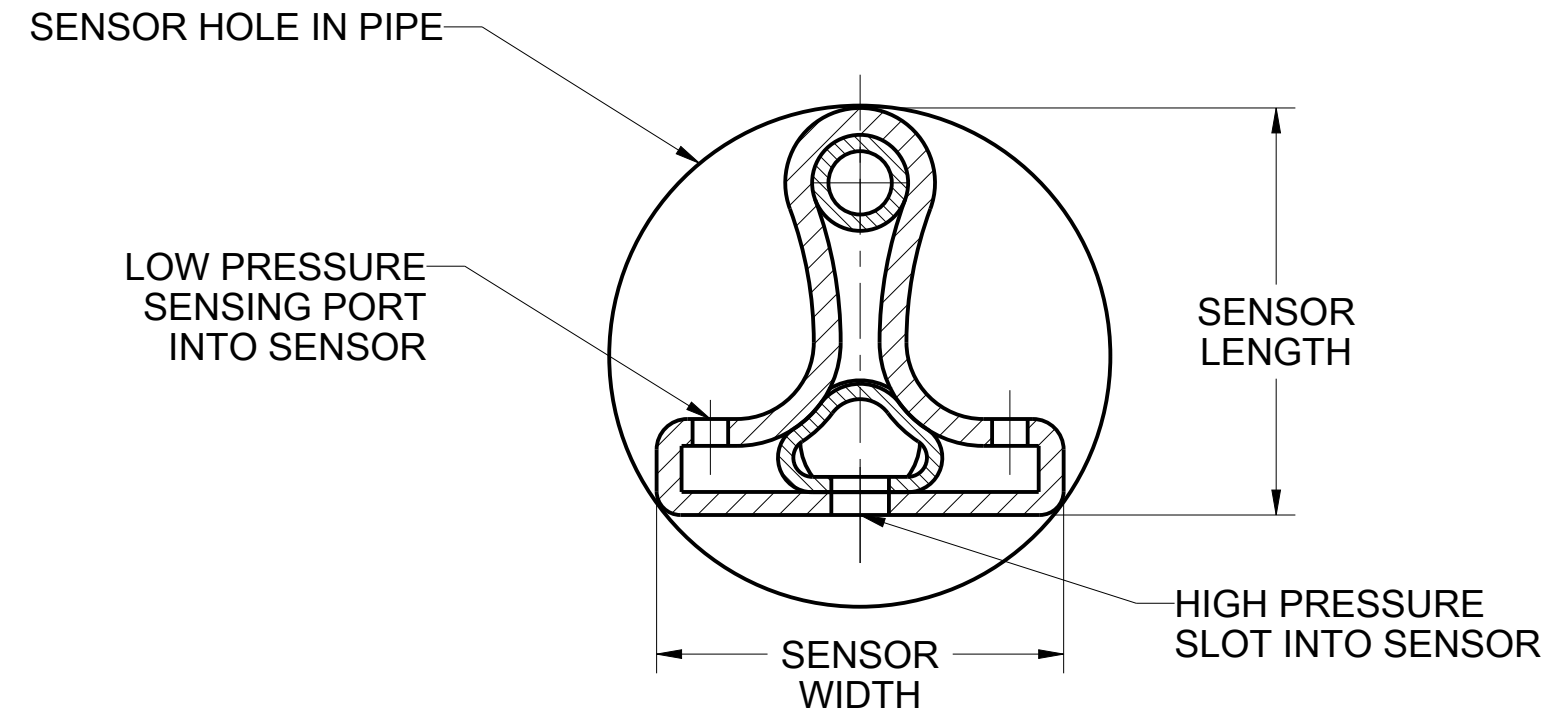


TABLE 2

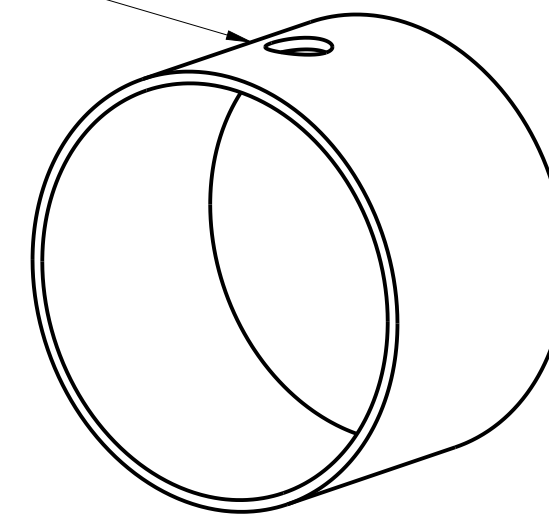
SENSOR SIZE	SENSOR LENGTH	SENSOR WIDTH
SIZE 1	.590 [14.99]	.590 [14.99]
SIZE 2	1.060 [26.92]	1.060 [26.92]



SENSOR CROSS-SECTION

FOR T1 SENSOR SIZE:
 $\varnothing 3/4 + .03/-0.0$
 $[\varnothing 19 + .8/-0]$
 SENSOR HOLE DRILL SIZE
 FOR LINE SIZE
 NPS 2-8
 [DN 50-200]

FOR T2 SENSOR SIZE:
 $\varnothing 1-5/16 + .06/-0.0$
 $[\varnothing 33 + 1.6/-0]$
 SENSOR HOLE DRILL SIZE
 FOR LINE SIZE
 NPS 6 - 36
 [DN150-900]



FOR ACCURATE FLOW MEASUREMENT DETERMINE THE DIAMETER OF THE HOLE TO BE DRILLED ACCORDING TO THE SPECIFICATIONS IN THE SENSOR SIZE HOLE CHART TABLE 3 (QSG 00825-0700-4809 OR 00825-0706-4809). DRILL THE MOUNTING HOLE INTO THE PIPE WITH A HOLE SAW OR DRILL. **DO NOT TORCH CUT THE HOLE**

SENSOR HOLE DRILL DETAIL

CONFIDENTIAL AND PROPRIETARY INFORMATION IS CONTAINED HEREIN AND MUST BE HANDLED ACCORDINGLY.		SURFACE FINISH UNLESS OTHERWISE SPECIFIED		125	3RD ANGLE		SIZE C	SCALE 1/14	REV AA
UNLESS OTHERWISE SPECIFIED DIMENSIONS IN INCHES (mm). REMOVE ALL BURRS AND SHARP EDGES.		EMERSON ROSEMOUNT 8200 Market Boulevard - Chanhassen, MN 55317 USA							
-DEC TOLERANCES-		TITLE DIMENSION DRAWING, MODEL 485 ANNUBAR (THREADED 150# - 600# ANSI)							
.X ± .1 [2.5]	.XX ± .02 [0.5]	DR. ZM		11/2/15		DRAWING NO. 00485-1019			
.XXX ± .010 [0.25]	FRACTIONS ± 1/32	APP'D HCY		11/3/15					
ANGLES ± 2°		DO NOT SCALE PRINT		CAD MAINTAINED. (PRO/E)		PRODUCT CODE		DOC TYPE SHEET 4 OF 4	

DRAWING NO. 00485-1019

DRAWING NO.

Electronic Master - Printed Copies Uncontrolled - Rosemount Proprietary