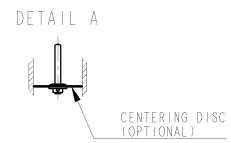
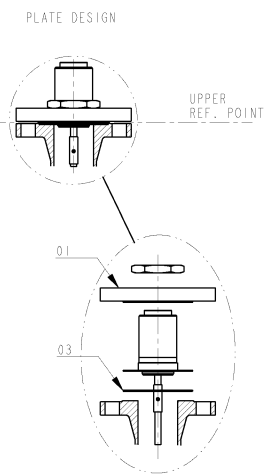
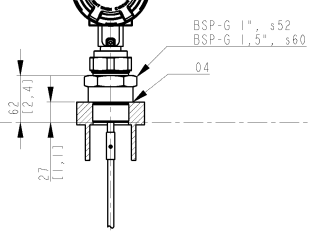
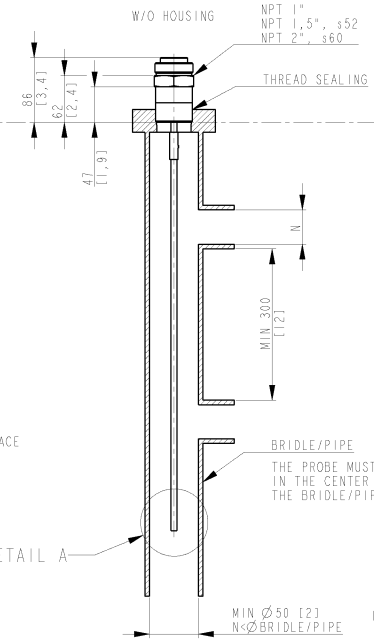


WHEN MOUNTING IN NON METALLIC VESSEL THE PROBE MUST BE MOUNTED WITH A METALLIC FLANGE >2"/DN50 OR THE THREADED VERSION MUST BE SCREWED IN TO A METAL SHEET >Ø200 [7.8].

AVOID DISTURBING EMC ENVIRONMENT. INSTALLATION IN METALLIC TANK IS RECOMMENDED.

1/2-14 NPT CONDUIT/CABLE THREAD. (BOTH SIDES). M20x1.5, PG13.5 ADAPTERS (OPTIONAL).



L > 300 [11.8] TO DISTURBING OBJECTS OR TO WALL IF MATERIAL CONCRETE, PLASTIC OR RUGGED METAL.

L > 100 [3.9] IF SMOOTH SURFACE METAL WALL.

DEPENDING ON TURBULENCE IN TANK AND MOUNTING ANGLE THE PROBE MAY NEED TO BE ANCHORED OR SUPPORTED.

ENSURE THAT THE PROBE HAS NO CONTACT TO NOZZLE/TANK WALL.

FOR MORE INFO, SEE REFERENCE MANUAL.

1. P/T-RATING FOR FLANGE; SEE REF. MANUAL.

POS	ITEM	DESCRIPTION	QTY	REMARK	SUPPLIER
04	GASKET	I	ACC. TO BSP-G THREAD STD.		CUSTOMER
03	GASKET	I	SOFT GASKET T-MIN 1.6 (ANSI B16.5/1c, EN1514-1/1BC). SEE NOTE 1.		CUSTOMER
02	SCREW/NUT/WASHER	-	ACC. TO FLANGE STD. SEE NOTE 1.		CUSTOMER
01	FLANGE	I	DIM. ACC. TO ANSI B 16.5/EN 1092-1. OTHER ON REQUEST. P/T RATING. SEE NOTE 1.		RMT

ISSUED BY	REV	PRODUCT CODE	FILE	INSTALLATION DRAWING TITLE		
Eme-HW-C	0909	3300	PRO/E	MECHANICAL INSTALLATION DWG		
APPROVED BY	REV	ORIGINAL DWG. NO.	SCALE			
Eme-HF	0909	9150077-973	-	RIGID SINGLE LEAD		
		T-SI ANGLE	DOC TYPE	DWG NO	ISSUE	SHEET
		2	2	9150077-973	03	1/1



THE COPYRIGHT/OWNERSHIP OF THIS DOCUMENT IS AND WILL REMAIN OURS. THE DOCUMENT MUST NOT BE USED WITHOUT OUR AUTHORIZATION OR BROUGHT TO THE KNOWLEDGE OF A THIRD PARTY. CONTRAVENTION WILL BE PROSECUTED. ROSEMOUNT TANK RADAR AB, SWEDEN