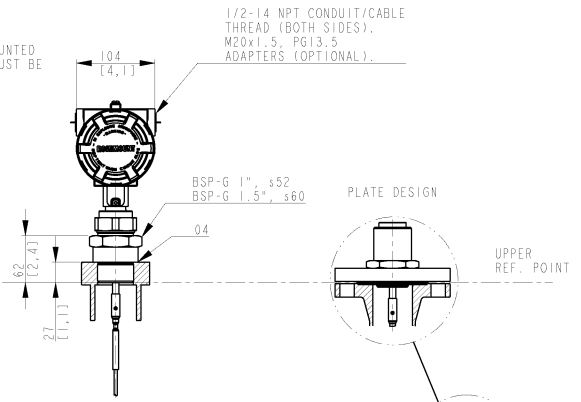
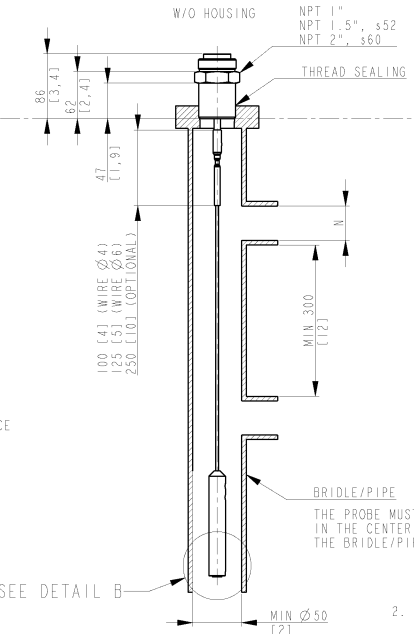
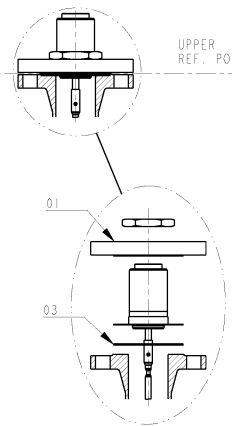
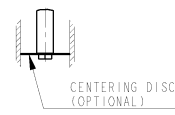


WHEN MOUNTING IN NON METALLIC VESSEL THE PROBE MUST BE MOUNTED WITH A METALLIC FLANGE >2"/DN50 OR THE THREADED VERSION MUST BE SCREWED IN TO A METAL SHEET >Ø200 [7,8].

AVOID DISTURBING EMC ENVIRONMENT. INSTALLATION IN METALLIC TANK IS RECOMMENDED.



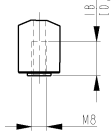
DETAIL B



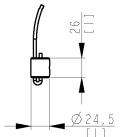
DEPENDING ON TURBULENCE IN TANK AND MOUNTING ANGLE THE PROBE MAY NEED TO BE ANCHORED OR SUPPORTED.

ENSURE THAT THE PROBE HAS NO CONTACT TO NOZZLE/TANK WALL.

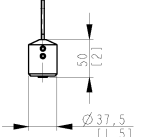
DETAIL A



CHUCK (OPTIONAL)



WEIGHT, SHORT (OPTIONAL, 4mm WIRE)



FOR MORE INFO, SEE REFERENCE MANUAL

2. GUIDELINES AND TANK CONNECTIONS VALID FOR BOTH Ø 4 AND Ø 6 WIRE.
1. P/T-RATING FOR FLANGE; SEE REF. MANUAL.

04	GASKET	I	ACC. TO BSP-G THREAD STD.	CUSTOMER
03	GASKET	I	SOFT GASKET T-MIN 1.6 (ANSI B16.5/1c, EN1541-1/1BC). SEE NOTE 1.	CUSTOMER
02	SCREW/NUT/WASHER	-	ACC. TO FLANGE STD. SEE NOTE 1.	CUSTOMER
01	FLANGE	I	DIM. ACC. TO ANSI B 16.5/EN 1092-1. OTHER ON REQUEST. P/T RATING. SEE NOTE 1.	RMT
POS	ITEM DESCRIPTION	QTY	REMARK	SUPPLIER

ISSUED BY	MEK	PRODUCT CODE	FILE	INSTALLATION DRAWING TITLE	
Eme-HW-C	0909	3300	PRO/E	MECHANICAL INSTALLATION DWG	
APPROVED BY	MEK	ORIGINAL DWG. NO.	SCALE	FLEXIBLE SINGLE LEAD	
Eme-HF	0909	9150077-974	-	DOC TYPE	DWG NO.
			1/1 OF 1	2	9150077-974
ROSEMOUNT®				ISSUE	SHEET
THE COPYRIGHT/OWNERSHIP OF THIS DOCUMENT IS AND WILL REMAIN OURS. THE DOCUMENT MUST NOT BE USED WITHOUT OUR AUTHORIZATION OR BROUGHT TO THE KNOWLEDGE OF A THIRD PARTY. CONTRAVENTION WILL BE PROSECUTED. ROSEMOUNT TANK-RADAR AB, SWEDEN.				03	1/1