

Tech Transformation Delivers Strong Offshore Gains, Efficiencies & Increased Reserves

RESULTS

- Clear visibility and data access anytime, anywhere
- Automated reporting and modeling
- Uniform system and data from one provider
- Centralized engine for asset automation and optimization
- Reduced operating costs and increased production revenue
- Increases proven reserves and sustainability



APPLICATION

DeltaV™ SaaS SCADA
DeltaV SaaS SCADA mobile app
Puffer-Sweiven
Emerson FB3000 Remote Terminal Unit (RTU)
Emerson Rosemount™ Pressure Transmitters
Enovate Ai Project Engineering & ADA AI™
Danos expert site survey & equipment installation

CUSTOMER

W&T Offshore, Inc. is an independent oil and natural gas producer with operations offshore in the Gulf of Mexico and has grown through acquisitions, exploration and development. They have working interests in 54 fields in federal and state waters, with under lease approximately 602,100 gross acres (446,800 net acres) spanning across the outer continental shelf off the coasts of Louisiana, Texas, Mississippi and Alabama, with approximately 440,600 gross acres on the conventional shelf, approximately 153,500 gross acres in the deepwater and 8,000 gross acres in Alabama onshore.

CHALLENGE

For continued, sustainable, long-term success and to fully support W&T Offshore strategy and values it was important that legacy measurement and pneumatic control systems on wells and facilities that W&T needed an extremely highly flexible



W&T OFFSHORE

“Digital transformation is part of the strategy for advanced optimization and intelligent operations to support our plan to increase production in the near-term with capital-efficient, safety focus and effective operations.”

- William Wilford
COO, W&T Offshore

CHALLENGE (CONTINUED...)

solution to gain efficiencies for future growth expansion to deliver clear visibility to offshore production. They desired a minimum of newly installed measurement hardware while still maximizing automated data collection at a low cost.

With high growth targets it was also imperative that the solution offer flexibility to work quickly, and seamlessly as new sites come on-board and new challenges arise with every production situation slightly different with it's own new challenges.

Offshore production in itself often presents even more challenges with such remotely located assets, even more safety risk and increased opportunities to responsibly reduce their environmental footprint.

Because W&T makes such a strong commitment to their values, and being focused on integrity, honesty, and transparency as critical to their business success and in communications with all employees, contractors, partners, and investors it was of the utmost importance to hold true to their beliefs and wanted to only work with providers that could prove they were trustworthy, accountable and could make a positive impact to their business and for sustainable growth.

SOLUTION

These challenges were originally shared in conversations with Enovate Ai who operates under an ecosystem mindset with partners to provide digital engineering at scale to achieve tangible metrics. They offer solutions crafted with emerging technologies and principles to ensure the greatest return on investment.

An indepth site survey was needed for Enovate Ai to completely understand what hardware was currently available and to properly engineer the right ultimate solutions and providers to deliver the most sustainable return.

Danos quickly did the site survey and provided Enovate Ai with all the site information they needed to get the project started. Danos offers the most responsive end-to-end integrated service solutions – safely, on time and within budget.

Founded in 1947, Danos is a family-owned and managed energy services provider, and achieves world-class safety results and customer loyalty due to a values-based approach and an unyielding commitment to employee engagement and training.

Once Enovate Ai had a crystal clear vision of what was already in use, what was needed, and what was not needed, they worked with Emerson



Human safety and environmental hazards can quickly escalate in offshore production with unwarranted trips to and from site. Gaining remote visibility to these sites is exceptional to delivering strong sustainable, return.

Enovate Ai



danos



SOLUTION (CONTINUED...)

to identify a trusted Emerson Impact Partner to supply these needs with the best possible cost structures and timeliness of deliveries.

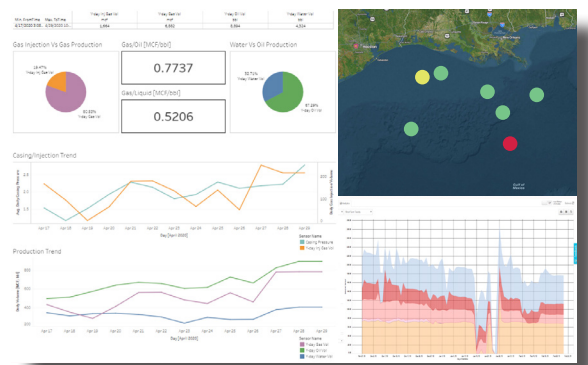
Since 1945, Puffer-Sweiven has set and improved the standard in equipment and services for process control, automation, safety, and reliability as an Emerson Impact Partner. Their tenured staff of industry experts consistently collaborates and delivers solutions to complex challenges and enables process-intensive facilities to run more efficiently and safely.

As an Emerson Impact Partner, Puffer-Sweiven serves as a local, single point of contact for sales, service and applied engineering for Emerson Automation Solutions in the Texas Gulf Coast and Central Texas area.

Emerson's DeltaV™ SaaS SCADA was then quickly and easily implemented to capture and deliver all the data coming from each asset and present authorized end users with actionable data analytics that deliver remote visibility, monitoring and control from anywhere, anytime.



Getting the right data to the right people, at the right time can easily become a significant clear pathway for any production operations to attain their lofty goals. DeltaV SaaS SCADA offers the ease and flexibility to make growth painless and for all new-users to be trained and adapt to new technology quickly. This type of cloud-native IIoT platform enables producers from around the world to easily increase communications across their entire organization; from offshore platforms to the office personnel; now everyone is able to see the analytics that are meaningful to their role, even from their phone with the SaaS SCADA mobile app.



SOLUTION (CONTINUED...)

Alarm notifications can be set up based on role, or groups of people within your organization to make sure that when specified thresholds are met that the right people are instantly aware there is a problem. These notifications are able to be sent via an outbound call, text message or email (or all of the above if you desire).

24/7 support and complete training are provided. Our support people are always ready to help you with your most difficult challenges (yes, real humans and even on holidays!).

Our training is available in the platform via workshops, courses, online videos and even scheduled with an expert that can help your people in a live, group setting.

Updates to the software are effortless since they happen in our cloud-native environment and enable your IT professionals to focus on their many other responsibilities.

This keeps your data flowing, your security in check, and your people focused at every level to make better, faster business decisions.

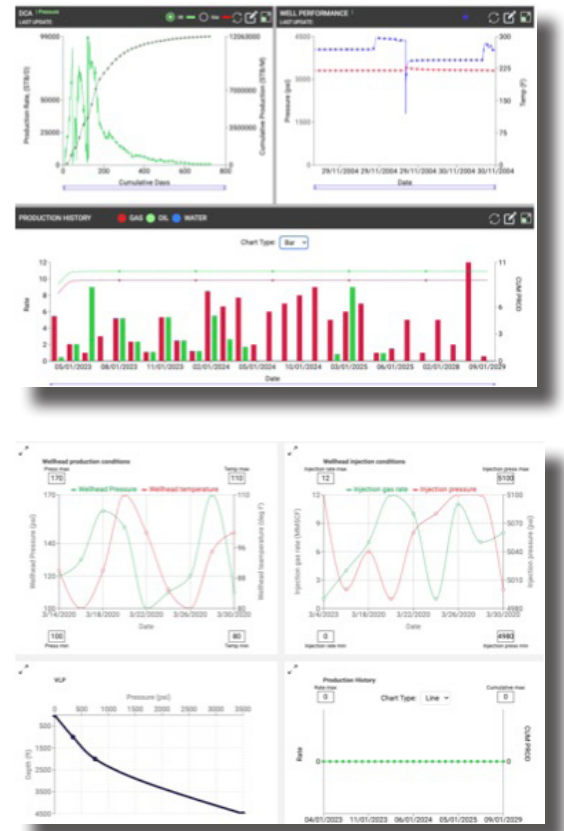
In addition, Enovate Ai Production Optimization – ADA AI™ Oil & Gas was included to deliver production optimization by integrating automated analysis and a range of AI driven applications for well construction and production optimization.

From existing assets, Enovate Ai technology minimized cost of production and ensured an efficient, reliable, and predictable production operation for optimal asset performance.

The integration of reliable measurements and digital engineering led to the implementation of Machine Learning models for accurate engineering and financial forecasting in complex production regimes, typical of offshore well environments.

The automated design for artificial lift optimization is validated with production data after 30, 60 and 90 days after the commissioning to fully quantify the return of investment of the digital asset transformation program.

In this exceptional collaboration to find the best possible solutions for W&T Offshore it was important to each of the contributing companies to be sure each solution was the perfect fit for what would best serve W&T not only for today, but for many tomorrows to come.



SOLUTION (CONTINUED...)

The perseverance of Emerson experts, and Enovate Ai staff along with exceptional fast service from Danos, and Puffer-Sweiven made this all possible at the speed W&T needed to provide strong, sustainable results.

Delivering successful results are what have made Emerson a trusted partner for digital technology advances to best suit our customer needs and we are proud to have been a part of this successful transformation and look forward to serving W&T Offshore for all their tech-stack needs in the future while they regain focus on their core business, increase safety and drive additional growth for their operations, their people and the communities they proudly work in and protect.

If you would like more information of how Emerson can assist you with your digital technology challenges and increase your production, safety, profits and sustainability please contact us today and we'll quickly get back to you and arrange a good time for you to discuss your biggest challenges and how we can help you quickly find the right solutions with the security and flexibility you need to get up and running quickly and efficiently while ensuring your staff is trained and has access to 24/7 support every step of the way.



North America and Latin America
Global Headquarters
Emerson Automation Solutions
Remote Automation Solutions
6005 Rogerdale Road
Houston, TX, USA 77072
T: +1 281 879 2699



Europe
Emerson Automation Solutions
Remote Automation Solutions
Unit 1, Waterfront Business Park
Dudley Road, Drierley Hill
Dudley, UK DY5 1LX
T: +44 1384 487200



Middle East and Africa
Emerson Automation Solutions
Remote Automation Solutions
Emerson FZE
PO Box 17033
Jebel Ali Free Zone - South 2
Dubai, UAE
T: +971 4 8118100



Asia Pacific
Emerson Automation Solutions Remote
Automation Solutions 1 Panda Crescent
Singapore 128461
T: +65 6777 8211

©2024 Emerson. All rights reserved.

The Emerson logo is a trademark and service mark of Emerson Electric Co. All other marks are the property of their respective owners. The contents of this publication are presented for information purposes only, and while every effort has been made to ensure their accuracy, they are not to be construed as warranties or guarantees, express or implied, regarding the products or services described herein or their use or applicability. All sales are governed by our terms and conditions, which are available on request. We reserve the right to modify or improve the design or specifications of our products at any time without notice. Responsibility for proper selection, use and maintenance of any product remains solely with the purchaser and end user.

Find us in social media

 Emerson | DeltaV Automation Platform

 DeltaV SaaS SCADA