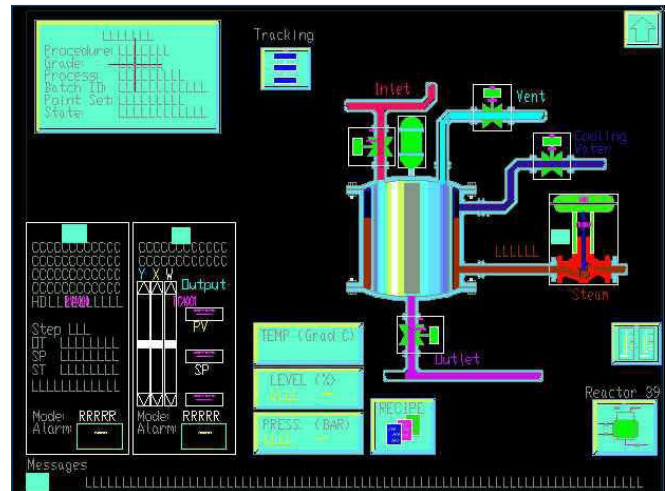


RS3™ to DeltaV™ Display Transition Services

- Transitions RS3™ displays to DeltaV™ displays
- Improves the operator interface—takes full advantage of new display technologies
- Establishes a plant graphics standard and graphics library
- Employs the services of expert engineers experienced with both RS3 and DeltaV equipment
- Reduces the time, effort, and risks associated with manual display builds



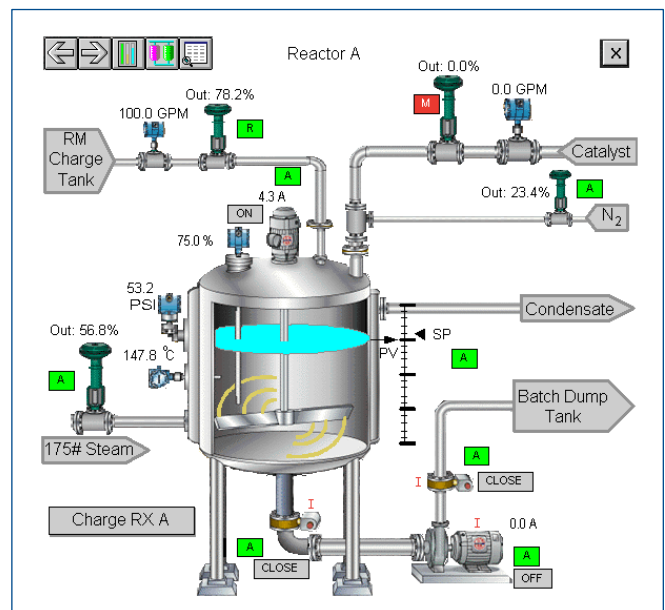
RS3™ Display (Before)

Introduction

Emerson offers Design and Comprehensive level display transition services to meet a variety of transition needs.

The display transition design service is your best choice when migrating from RS3 consoles and controllers to the DeltaV process automation system. Taking full advantage of new technologies, graphics standards and onboard DeltaV system capabilities, this service delivers the optimal operator interface for your plant.

In the design service, the Emerson team works with your process and graphics personnel to develop a graphics standard, incorporating the new display technology and your plant operating procedures and philosophies. Using this new graphics standard and elements from the DeltaV libraries, the team develops your graphics library. Then, they translate your existing RS3 graphics into DeltaV operator interface graphics.



DeltaV™ Display (Design Service—After)

The display transition comprehensive service provides DeltaV displays that are functional equivalents of the original RS3 displays. Combining the expertise of our engineering staff with the use of an automated conversion utility, the comprehensive service generates DeltaV operator interface displays with 100% of the original RS3 display functionality. The service greatly reduces the time, effort and risk associated with converting your graphic displays.

Design and comprehensive services feature complete DeltaV displays, ready for checkout and use at the plant. They are 100% compatible with DeltaV Operate for easy maintenance.

Benefits

Improved operator interface using DeltaV technology. The transition service takes advantage of the latest in DeltaV operator interface capabilities. Your operators will have a consistent, easy-to-understand and easy-to-use interface, which helps them run the plant more effectively.

Leverage expertise at Emerson. Emerson is staffed by engineers who know the RS3 and DeltaV systems extremely well. They use that expertise to get the most out of the DeltaV operator interface. They will work with you to create an operator interface that reinforces and supports your plant operating procedures.

Reduce the time and effort spent on building new displays. Keep your personnel and their capabilities focused on more critical plant priorities.

Manage the pace of your technology investments by phasing the upgrades. Immediately deploy new DeltaV operator interface technologies that work with your existing controls, enabling you to plan future automation investments while enjoying the benefits of enhanced capabilities.

Service Description

Included in all transition services:

- **Expert project management** using certified and proven ISO-9000 methodology.
- **Transition** of RS3 graphics to DeltaV operator interface graphics.

Options

To enhance your transition project, the following service options should be considered.

- **Custom dynamic graphic element design.** Emerson can develop customized 2D and 3D graphic elements and DeltaV dynamic objects to replace grouped objects for improving the ease of maintenance of your converted DeltaV graphic displays.
- **Development of a plant graphic standard.** This standard will document and describe the symbols, guidelines, color schemes, gray scale, and other conventions that the team develops. It serves as a reference to ensure ongoing consistency as you expand and update the system.
- **Development of a plant graphics library.** Use elements from existing DeltaV libraries with your new graphic standard to generate graphic elements that can easily be reused.
- **Site Services.** At any time during the development of the displays, site visits may be advantageous. When the display transitions are completed, the displays should be checked out at the plant. Emerson sales/services offices can supply personnel to assist with or lead this effort. All site work is priced on a time and materials basis.
- **Operator Training.** Emerson provides comprehensive training for your entire staff, including engineering, safety, maintenance, and operations personnel. Emerson's training formats—eLearning, traditional classroom, onsite and dynamic simulation-based training—apply hands-on and learn-by-doing approaches to ensure that you achieve your training goals.

Contact your local Emerson office for more details about these options.

Summary

By having Emerson transition your RS3 displays, you keep your own staff's valuable attention focused on site priorities. When migrating from RS3 to the DeltaV operator interface, the transition service takes full advantage of the new display capabilities and creates a graphic standard and library tailor-made to fit your plant and your operating procedures. Migration to the DeltaV operator interface reduces the maintenance costs of your current operator interface, while laying a foundation for future technology investments.

Specifications

RS3 to DeltaV Display Transition — Transition Service Specifications	
Inputs	<ol style="list-style-type: none"> Customer discussions and meetings, as well as existing plant standards and conventions concerning graphic displays. Current RS3 or DeltaV Operate for RS3 displays as a foundation for the new DeltaV operator displays.
Output	DeltaV display files on CD-ROM media
Output File Format	DeltaV version v7.x and later

Graphic Element Conversion Specifications

- “Tapestry” Graphics are supported by use of slide bars.
- RS3 symbols are converted as DeltaV grouped objects.
- Alarm information is supported through the standard DeltaV alarm window.
- Trend information is provided through the faceplate trend detail display.

Order Information

Description	Model Number
RS3-to-DeltaV Display Transition Services	Contact your local Emerson office

Prerequisites

- Request a services proposal from the Emerson Sales/Services organization.
- Provide an up to date RS3 MTCC System configuration
- “BACKUP” on ¼ inch tape. Note: A boot tape is not acceptable.
- For RS3 Operator Consoles - ROS (FIX32 format) or DeltaV Operate for RS3 (FIX32/iFIX format) displays, provide the latest graphics on CD-ROM.
- Attend training on DeltaV configuration. This training will give you the skills and knowledge to complete any future editing processes.

Emerson

North America, Latin America:

+1 800 833 8314 or
+1 512 832 3774

Asia Pacific:

+65 6777 8211

Europe, Middle East:

+41 41 768 6111

www.emerson.com/deltav

©2021, Emerson. All rights reserved.

The Emerson logo is a trademark and service mark of Emerson Electric Co. The DeltaV logo is a mark of one of the Emerson family of companies. All other marks are the property of their respective owners.

The contents of this publication are presented for informational purposes only, and while every effort has been made to ensure their accuracy, they are not to be construed as warranties or guarantees, express or implied, regarding the products or services described herein or their use or applicability. All sales are governed by our terms and conditions, which are available on request. We reserve the right to modify or improve the designs or specifications of our products at any time without notice.