

# ROCLINK™ 800 Configuration Software

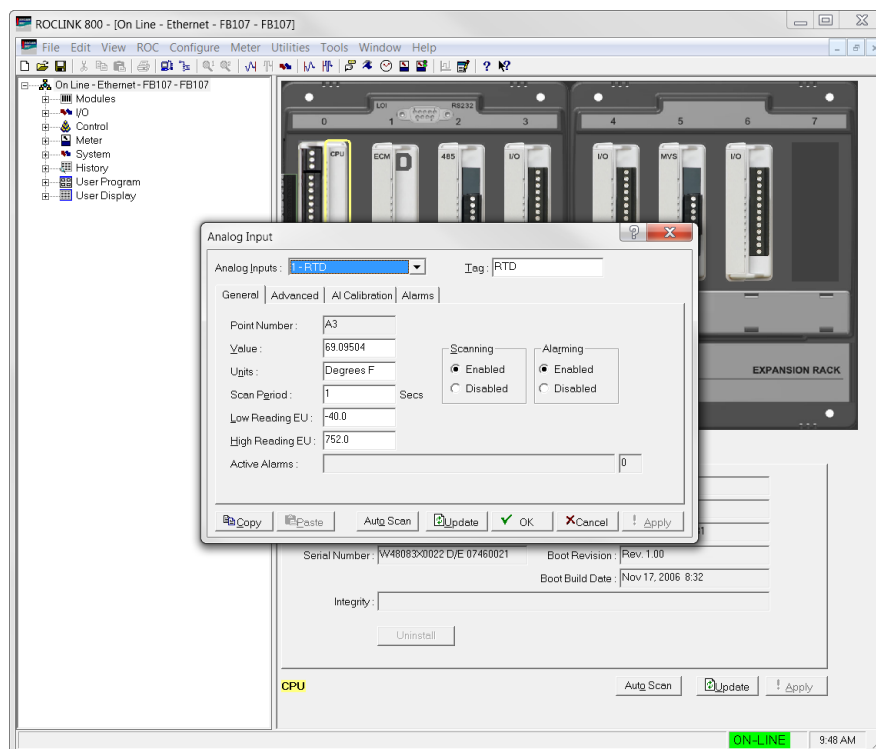
ROCLINK 800 Configuration Software, a Windows®-based program, enables you to easily monitor, configure, and calibrate ROC800-Series Remote Operations Controllers, DL8000 Preset, FloBoss™ 103 & 104, FloBoss 107, and FloBoss 500-Series Flow Managers.

ROCLINK 800 is designed for ease of use. Dropdown menus simplify accessing the functions provided by the software. Dialog boxes and dropdown lists help to direct selections and data entry. You can perform actions with the keyboard or a pointing device, such as a mouse.

Access help screens either from the Help menu or by using the F1 function key. This feature makes it easy to access online information for any topic.

Use ROCLINK 800 software to:

- Retrieve and report historical data, events, and alarms.
- Perform five-point calibration on analog inputs, resistance temperature detector (RTD) inputs, multi-variable sensor (MVS) inputs, and dual-variable sensor (DVS) inputs.
- Implement user security.
- Create and edit graphic displays.
- Create, edit, and debug Function Sequence Tables (FSTs).
- Set communications parameters for direct connection, telephone modems, Ethernet, and other communications methods.
- Configure Modbus parameters.
- Set up power saving features, such as radio power control.
- Update the firmware.
- Configure and view input/output (I/O) points; flow calculations; proportional, integral, and derivative (PID) control loops; system parameters; and power management features.



Typical Configuration Screen

## Dynamic Graphical User Interface

The dynamic graphical user interface (GUI) is an on-screen representation of your FB107 or ROC800-Series unit. You can navigate device options either by using the ROCLINK menu structure or by clicking on the dynamic GUI and selecting a tab or button. The dynamic GUI shows the current configuration of the selected point, including alarms (hardware) and integrity (software or field device) errors.

## User Program Integration

User programs provide the ROC or FloBoss with extended functions and applications (such as gas chromatograph support or custom flow calculations). You can use ROCLINK 800 to download, start, stop, and remove user programs. Extensive documentation covering configuration and usage information accompanies each user program.

## Display Customization

You can create graphical displays for the ROC or FloBoss. You can store the displays on your local PC or download them to your ROC800 or FloBoss 100-Series device. The displays combine both static and dynamic data elements. You can use the displays to monitor the operation of the ROC or FloBoss, either locally or remotely.

By adding objects (tabs, fields, labels, text, etc.) to the display, you can incorporate “live” data as well as images and other information you wish to convey. User-definable parameters are associated with each object on the screen.

You can use custom displays to graphically represent the application that a ROC or FloBoss monitors and controls. Another use is to monitor the ROC or FloBoss and change commonly used parameters from a single screen.

## Logs

View logs for history, event, and alarm data retrieved from the connected device. You can print logs or save logs to your PC for later off-line viewing. You can also plot data contained in the historical log for a graphical representation of the data.

## EFM Reports

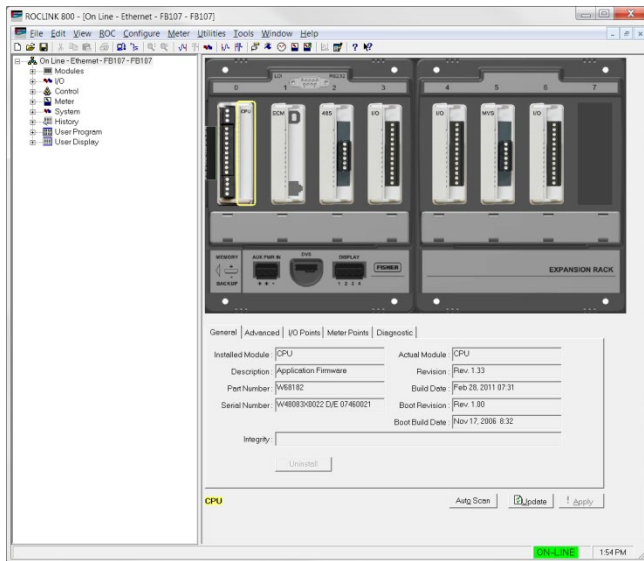
You can generate printable on-screen reports of the configuration, alarms, events, and historical flow data for a meter point. ROCLINK 800 uses EFM (Electronic Flow Measurement) reports, in conjunction with the AGA flow calculation capabilities of the ROC800 or FB107, to display or print previously collected flow data. An EFM report file contains all flow data, which includes the operational characteristics (configuration parameters, history, events, and alarms) of each measured meter run configured in the ROC or FloBoss. You can save the data for later viewing on your PC, print the EFM data, or convert the data to AGA/DET, FloCal, and PGAS data formats.

## Security

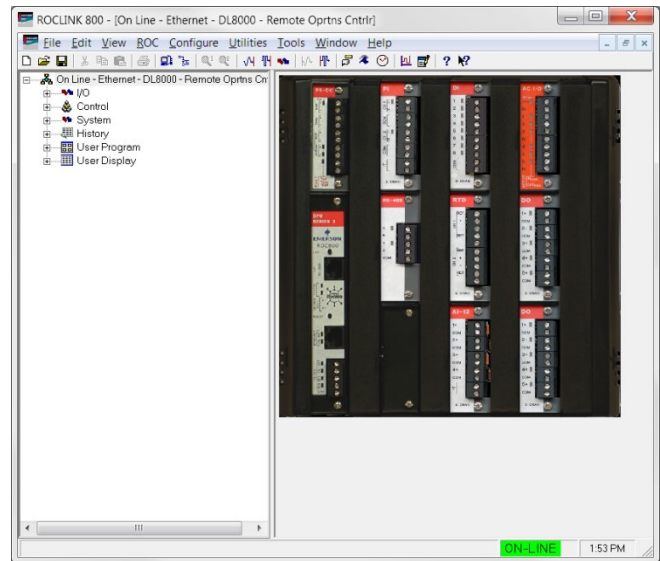
The software provides user-level security that synchronizes access control for both ROCLINK 800 software and the ROC or FloBoss. Various functions are available to each security level. By allowing you to assign different security levels for individual users, you control who can access (log on) ROCLINK 800 and the amount of information available to each user. Starting with version 2.70, you have an option to use longer usernames (up to 30 alphanumeric and special characters) and longer passwords (up to 32 alphanumeric and special characters which are case-sensitive).

## Features

Individual device features and functions are accessible through the menu bar in ROCLINK 800. Available selections are listed in *Menu Listing for ROCLINK 800 Software*.



FloBoss 107 Dynamic GUI



ROC800-Series Dynamic GUI

## ROCLINK 800 Specifications and Requirements

### Software Operating Environment

Operating System	Windows 10 (32-bit and 64-bit) or Windows Server 2012
------------------	---

### Hardware Operating Requirements

CPU	Pentium®-class processor (233 MHz or greater recommended)
-----	---

Hard Disk Space	105 MB
-----------------	--------

RAM	64 MB
-----	-------

Display	SVGA color monitor, 800 x 600 pixels, small fonts
---------	---

Optical drive	CD-ROM drive
---------------	--------------

Menu Listing for ROCLINK 800 Software

File Menu	Edit Menu	View Menu	ROC Menu	Configure Menu
New Open... Download... Close Save Configuration Print Configuration Print Print Setup [List of Recent Files] Exit	Undo Cut Copy Paste	Directory EFM Report Calibration Report History Alarms Events Weights and Measure Events <sup>5,6</sup>	Direct Connect Connect/Disconnect Collect Data Clock Security Comm Ports Information Flags	I/O Control History Segments <sup>1,5,6</sup> History Points Opcode Table Modbus LCD User List <sup>2,3,4</sup> LCD <sup>1</sup> User Data <sup>2</sup>
Meter Menu (Gas Meters <sup>6</sup> )	Utilities Menu	Tools Menu	Windows Menu	Help Menu
Setup Calibration Values Plate Change History	Update Firmware Upgrade Hardware License Key Administrator <sup>1,4,5,6</sup> Convert EFM File User Program Administrator <sup>1,2,4,5</sup> ROCLINK 800 Security AI Calibration Values RTD Calibration Values <sup>1,5,6</sup> MVS Calibration Values <sup>1,4,5,6</sup> FST Editor Custom Display Editor Custom EFM Report Editor Keypad Display Editor Read File From Device <sup>1,4,5</sup> Weights and Measures Lock/Unlock <sup>6</sup> Communications Monitor	Customize Options	Cascade Tile [List of open windows]	Help Topics About ROCLINK 800

1. This option applies to ROC800-Series units
2. This option applies to FloBoss 103 and 104 units
3. This option applies to FloBoss 500-Series units
4. This option applies to FloBoss 107 units
5. This option applies to DL8000 units
6. This option applies to ROC800L units

For customer service and technical support, visit [Emerson.com/SupportNet](https://emerson.com/SupportNet).

**North America and Latin America:**

Emerson Automation Solutions  
Energy and Transportation Solutions  
6005 Rogerdale Road  
Houston, TX 77072 U.S.A.  
T +1 281 879 2699 | F +1 281 988 4445  
[Emerson.com/SCADAforEnergy](https://emerson.com/SCADAforEnergy)

**United Kingdom:**

Emerson Automation Solutions  
Meridian East  
Meridian Business Park 7  
Leicester LE19 1UX UK  
T +44 0 870 240 1987  
F +44 0 870 240 4389

**Europe:**

Emerson S.R.L  
Regulatory Compliance Shared Services  
Department  
Company No. J12/88/2006  
Emerson 4 Street  
Parcul Industrial Tetarom 11  
Romania  
T +40 374 132 000

**Middle East/Africa:**

Emerson Automation Solutions  
Energy and Transportation Solutions  
Emerson FZE  
P.O. Box 17033  
Jebel Ali Free Zone – South 2  
Dubai U.A.E.  
T +971 4 8118100 | F +971 4 8865465

**Asia-Pacific:**

Emerson Automation Solutions  
Energy and Transportation Solutions  
1 Pandan Crescent  
Singapore 128461  
T +65 6777 8211 | F +65 6777 0947

© 2004-2023 Bristol Inc., an affiliate of Emerson Electric Co. All rights reserved.

This publication is for informational purposes only. While every effort has been made to ensure accuracy, this publication shall not be read to include any warranty or guarantee, express or implied, including as regards the products or services described or their use or applicability. Bristol Inc. (hereinafter “Energy and Transportation Solutions” or ETS) reserves the right to modify or improve the designs or specifications of its products at any time without notice. All sales are governed by ETS terms and conditions which are available upon request. ETS accepts no responsibility for proper selection, use or maintenance of any product, which remains solely with the purchaser and/or end-user. Emerson Automation Solutions, Emerson, and the Emerson logo are trademarks and service marks of Emerson Electric Co. All other marks are the property of their respective owners.