

Quick Start Guide

Rosemount™ 6888 Analyzer

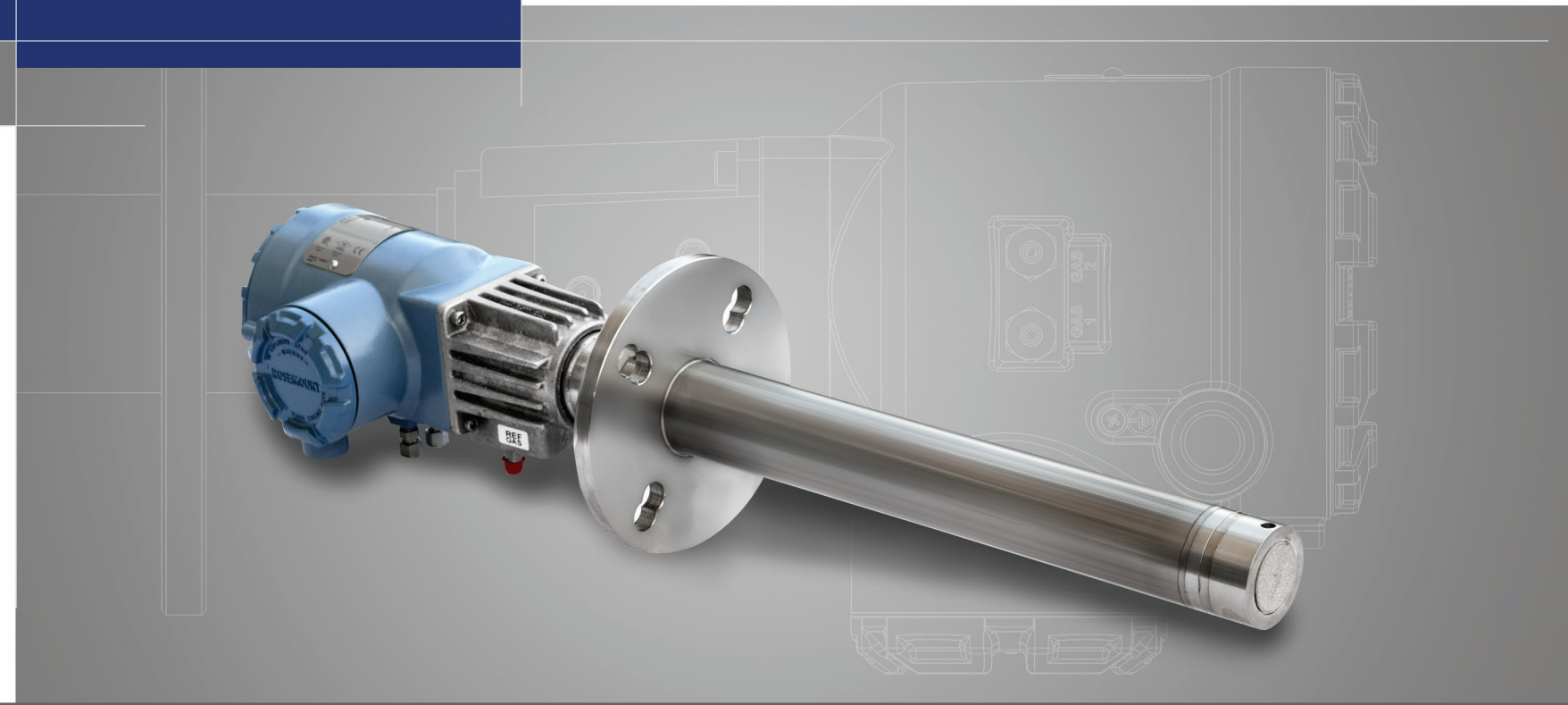
Overview

The 6888 is a combustion analyzer which measures the oxygen remaining in flue gases from any combustion process (boiler, furnace, etc.) by controlling the air to fuel ratios, the optimum flue gas O₂ variations in air density, or fuel BTU that are compensated. Other benefits are reaching maximum efficiency with the lowest NO_x and minimum CO₂ emissions.

This latest version of the 6888 has an optional online *Calibration Recommended* diagnostic to indicate when the analyzer needs to be calibrated.

Also, internal gas-switching solenoids direct calibration gases to the sensing cell, which provides on-line calibration, all while the boiler or furnace is in operation.

Calibrations can also be initiated based on time since last calibration or manually.

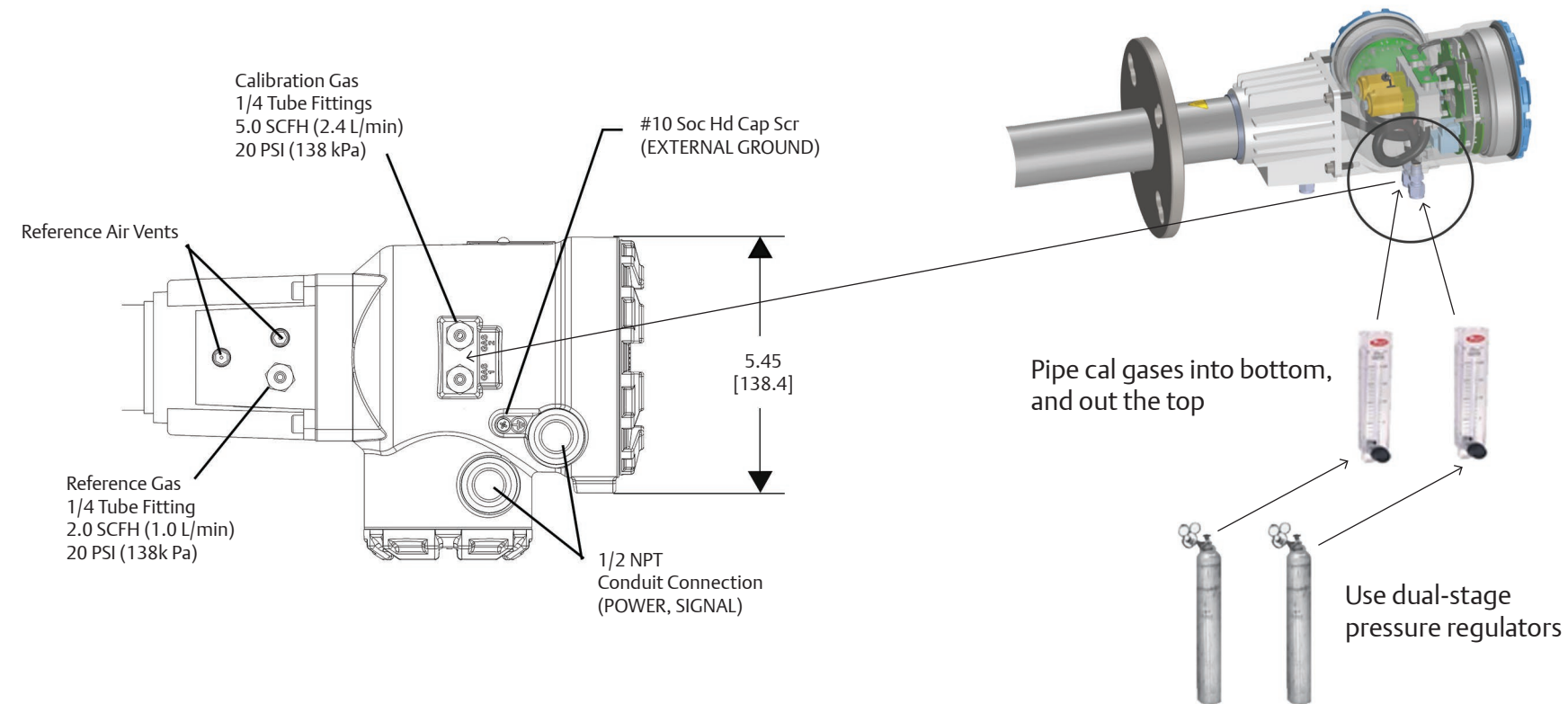


Pneumatic Installation

Manual bottle-switching is not possible with this system, so do a good job on the installation. Do a leak check on all the fittings to prevent bleeding of the cal gas bottles over time.

Reference air is optional. (You can just leave this port open to atmosphere.)

If used, make sure that the instrument air is clean and dry, and mount the reference air flowmeter similarly to the cal gas flowmeters.



CMB_QS_6888AutoCal
July 2017

HART Electrical Installation

Notes:

Except for JP5, JP7, and JP8 on the IO Board, jumper and switch setting are factory set and are shown for reference only.

IO Board 4–20 mA/HART loop power settings

JP5: Pins 1–2 Internal power 6888Xi to 6888 Transmitter
 Pins 2–4 External power 6888Xi to 6888 Transmitter
 (Requires 250 Resistor across J4, PR+ to PR-)

JP7/JP8: Pins 1–2 Internal power 6888Xi to DCS
 Pins 2–4 External power 6888Xi to DCS



With FOUNDATION™ fieldbus probes no Xi is required to conduct AutoCal



Xi electronics

Recommended Menu selections

PROBE #1	Detailed Setup	Calibration	AO TRACK	Yes	
			TOL CHECK	No	
			CAL Recommended	Yes	
			CAL Acknowledge	No	
			CAL Gas #1	0.4% O ₂	
			CAL Gas #2	8% O ₂	
			Gas Time	300 Seconds	
			Purge Time	300 Seconds	
			Diffuser	Plugged Diffuser	Rate
				Auto Advance CAL	Yes
		Auto Calibration	Enable Auto Cal	No - Std. Housing Yes - AutoCal Housing	
			Start on Cal Recommended	No	
			Cal Interval	672 hours (1 month) - 9999 = manual initiate	
			Next Cal Time	Variable	

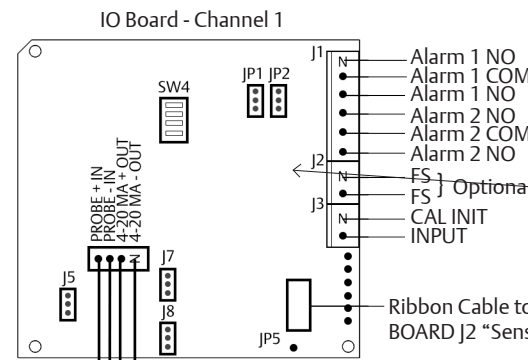
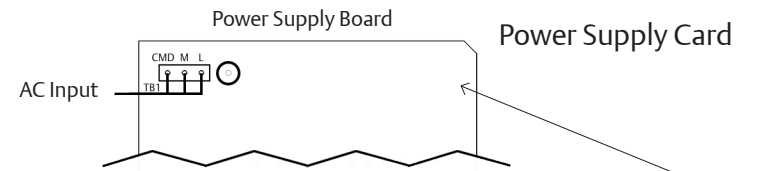
IO Board Switch / Jumpers

Jumper Settings

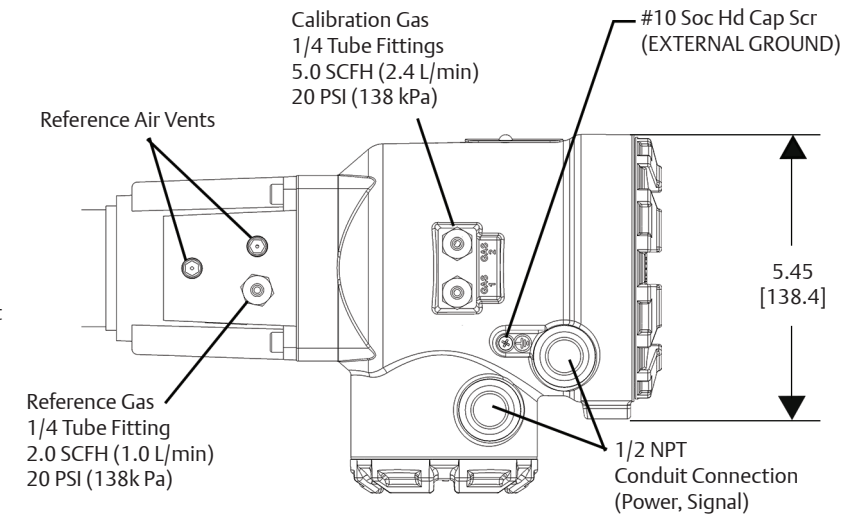
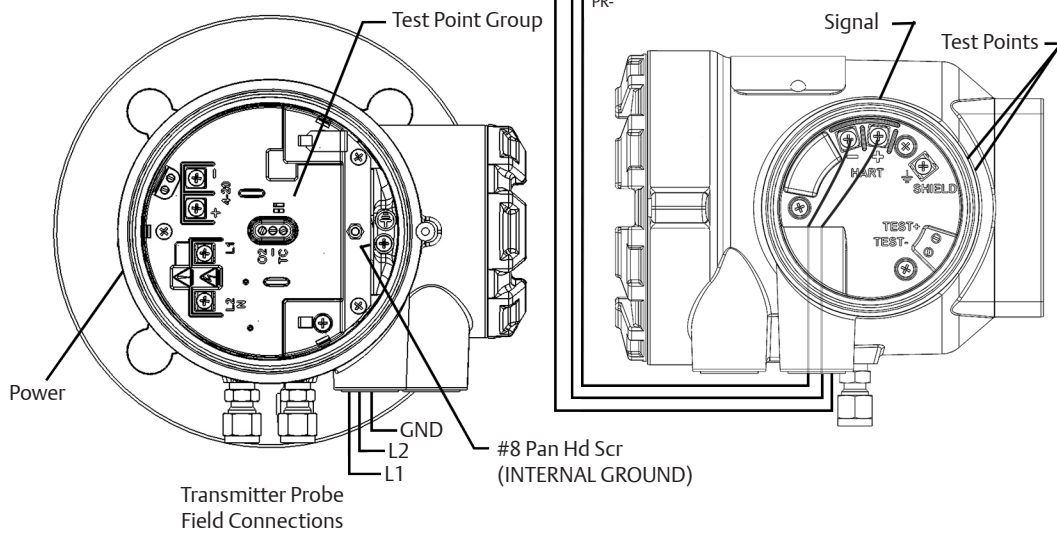
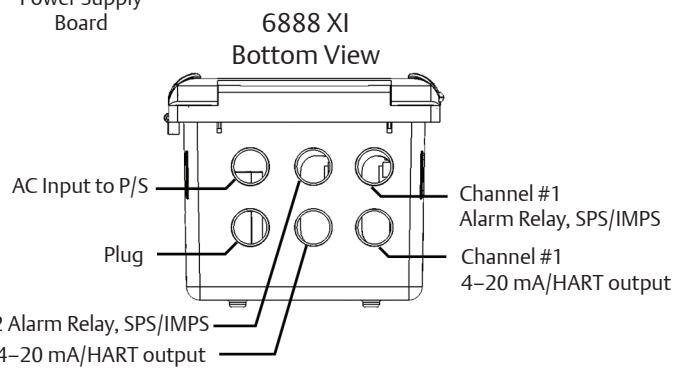
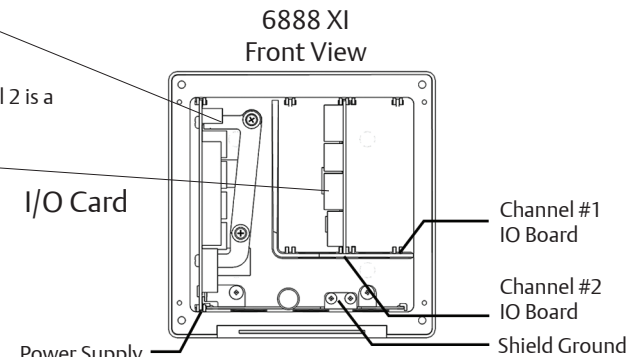
JP1: Pins 2–3
 JP2: Pins 2–3
 JP5: Pins 1–2 Int power
 Pins 2–3 Ext power
 JP7: Pins 1–2 Int power
 Pins 2–3 Ext power
 JP8: Pins 1–2 Int power
 Pins 2–3 Ext power

SW4 Switch Settings

Pos 1 - Off
 Pos 2 - Off
 Pos 3 - Off
 Pos 4 - Off



Note: I/O Board - Channel 2 is a duplicate of Channel 1



www.Emerson.com/RosemountGasAnalysis

Rosemount
 8200 Market Blvd
 Chanhassen, MN 55317
 Toll free: + 1 800 999 9307
 F +1 952 949 7001
gas.csc@emerson.com

©2017 Emerson Automation Solutions. All rights reserved.