

# Rosemount™ 214C G6

## Installation Instructions




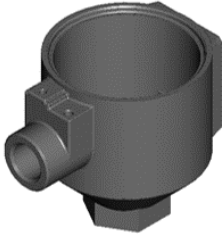
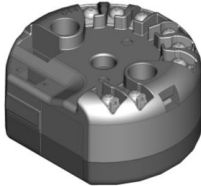

**Contents**

Components..... 3  
Installation tools.....5  
Installation procedure..... 6

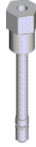
# 1 Components

## 1.1 Dual transmitter kit

**Table 1-1: Dual transmitter kit components**

Description	Quantity	Image
Cover-extension ring assembly	1	
Main housing	1	
Transmitter #1	1	<p data-bbox="596 894 979 1000"><b>Note</b> For illustrative purposes, the 644 Temperature Transmitter with HART® protocol is depicted.</p> 
Mounting screw	2	

**Table 1-1: Dual transmitter kit components (continued)**

Description	Quantity	Image
Threaded standoff	2	

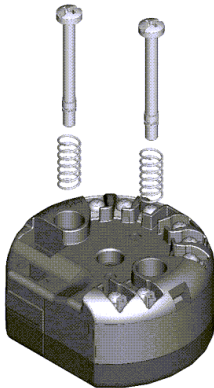
## 1.2 Customer-supplied transmitter

The customer will supply a second transmitter to successfully install the G6 option of the Rosemount 214C Temperature Sensor.

**Note**

[Figure 1-1](#) illustrates the order of assembly of the customer-supplied transmitter screws and springs removed during the installation process.

**Figure 1-1: Customer-supplied Transmitter**



**Note**

For illustrative purposes, the 644 Temperature Transmitter with HART® protocol is depicted.

## 2 Installation tools

Use the following tools to successfully install the G6 option for the Rosemount 214 RTD Temperature Sensor.

- Required
  - Screwdriver (Phillips or flat-head)
  - Pliers
- Optional
  - Housing assembly/disassembly tool

### 3 Installation procedure

#### Procedure

1. **Note**  
Do not remove cover from extension ring.

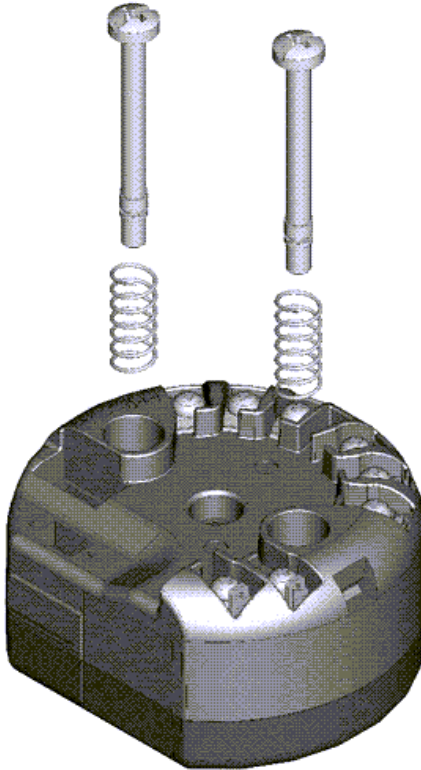
**Note**  
Cover-extension ring assembly will be required in future steps in this procedure.

Remove cover-extension ring assembly from main housing.



2. Using a screwdriver, wire Emerson-supplied transmitter per [Rosemount 214C RTD Temperature Sensor Quick Start Guide](#).
3. **Note**  
For illustrative purposes, the 644 Temperature Transmitter with HART® protocol is depicted.

Using pliers, remove each screw and spring from customer-supplied transmitter by pulling directly outward.



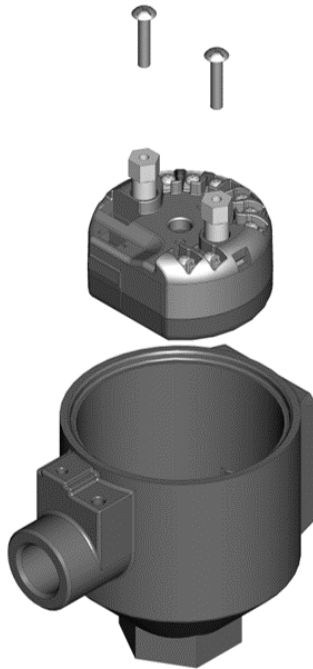
4. Dispose of screw and springs from customer-supplied transmitter.

- 
5. **Note**  
Do not remove Emerson-supplied transmitter or threaded standoffs from main housing. The drawing illustrates the order of assembly of the components used in this step.
- 

**Note**  
Mounting screws will be required in future steps in this procedure.

---

Remove each mounting screw from threaded standoffs.

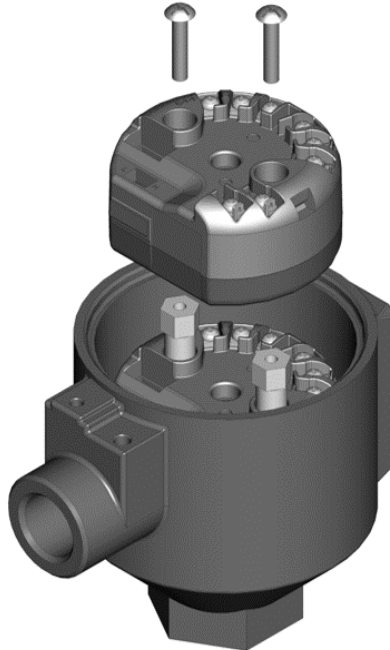




## 6. NOTICE

Tighten mounting screws to 7 in-lbs.

Using the mounting screws, mount customer-supplied transmitter above threaded standoffs.



7. Using a screwdriver, wire customer-supplied transmitter per [Rosemount 214C RTD Temperature Sensor Quick Start Guide](#).
8. Fasten cover-extension ring assembly to main housing until both assemblies touch metal-to-metal.







**Quick Start Guide**  
**MS-00825-0700-2654, Rev. AB**  
**November 2024**

For more information: [Emerson.com/global](https://emerson.com/global)

©2024 Emerson. All rights reserved.

Emerson Terms and Conditions of Sale are available upon request. The Emerson logo is a trademark and service mark of Emerson Electric Co. Rosemount is a mark of one of the Emerson family of companies. All other marks are the property of their respective owners.

**ROSEMOUNT™**

