

# PRV Monitoring Provides Precise Relief Event Information

## RESULTS

- Accurate calculation of natural gas emissions – both duration and flow
- Real-time notification of relief events

## APPLICATION

Pressure Relief Valves

## CUSTOMER

Power generation facility in North America

## CHALLENGE

The plant has 2 simple cycle combustion turbines firing only natural gas, with PRVs used as overpressure protection. Tracking the duration and extent of natural gas emissions have been inaccurate and time consuming for the customer – with manual rounds and offline calculations involved.

## SOLUTION

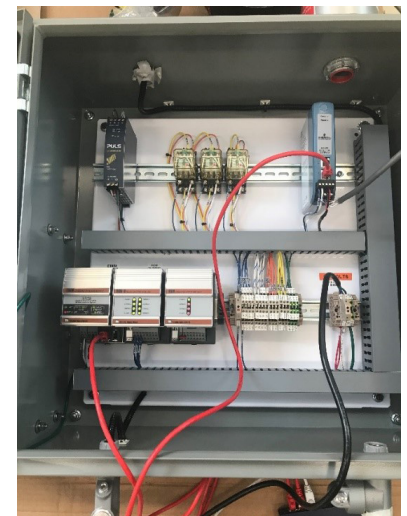
Emerson proposed a wireless monitoring solution featuring a gateway, wireless position monitors mounted to API 526 direct spring pressure relief valves and a simple relay interface to the site's PLC control system. Additionally, Emerson technicians set up discrete alarms based on the PRV stem travel percent. Emerson provided a turnkey solution to ensure a smooth deployment with no additional work required by the customer.

## RESOURCES

- PRV Monitoring Application Guide
- PRV Monitoring Demo Video



*PRV wireless monitoring provides a power facility with real-time notification of relief events to enhance reporting accuracy and increase safety.*



### Emerson Automation Solutions

#### Americas

T +1 800 558 5853  
T +1 972 548 3574

 [webadmin.regulators@emerson.com](mailto:webadmin.regulators@emerson.com)

 [Emerson.com](https://www.emerson.com)

#### Europe

T +39 051 419 0611

 [Facebook.com/EmersonAutomationSolutions](https://www.facebook.com/EmersonAutomationSolutions)

#### Asia Pacific

T +65 6777 8211

 [LinkedIn.com/company/emerson-automation-solutions](https://www.linkedin.com/company/emerson-automation-solutions)

 [Twitter.com/emr\\_automation](https://twitter.com/emr_automation)

#### Middle East / Africa

T +971 4811 8100