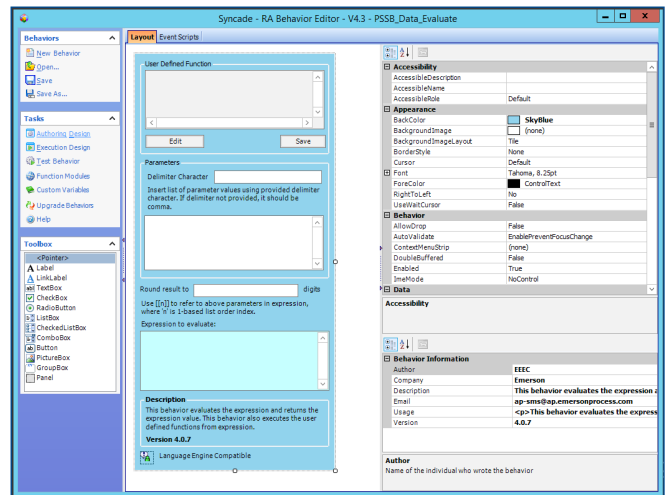


# Syncade Behaviors

- Facilitate transactions with third party systems
- Perform operations from electronic work instructions
- Implement extended recipe functions



Use the Behavior Editor Tool to modify behavior code, custom variables, and common functions from a single, easy to use interface.

## Introduction

Syncade MES Behaviors enable recipe authors to extend workflow functionality by facilitating transactions with third party systems. Behaviors are used at specific execution points to perform complex calculations, trigger events, collect data, and execute tasks across the Syncade MES.

Each behavior has unique data entry requirements and formulates responses based on its functionality. Behaviors can pass or fail when executed and will communicate error messages when detected. All standard behaviors are available through the Syncade Support Site, once they have passed Emerson's quality process to ensure they are tested and supportable.

## Behaviors Help You Work More Efficiently

Drive operational certainty and augment your MES functionality with Syncade Behaviors. Types of behaviors include:

- DeltaV Integration
- Material and Inventory Management
- Order Management and Workflow
- Equipment Tracking
- Weigh and Dispense
- Data Management

### DeltaV Integration

Collect batch status and history from your DeltaV DCS to include in the Syncade MES electronic batch record. Use behaviors to add and remove campaigns. Read and write OPC and OPCXi values to drive workflow operations.

### Material and Inventory Management

Improve overall lot genealogy with more robust material and inventory management. Modify quality control status to manage material usage and storage. Track materials and determine when to use alternates or reorder. View containers and their custom properties in inventory. Improve movement of materials with the ability to split, deplete, and adjust container quantity. Modify and print barcodes for better inventory tracking.

### Order Management and Workflow

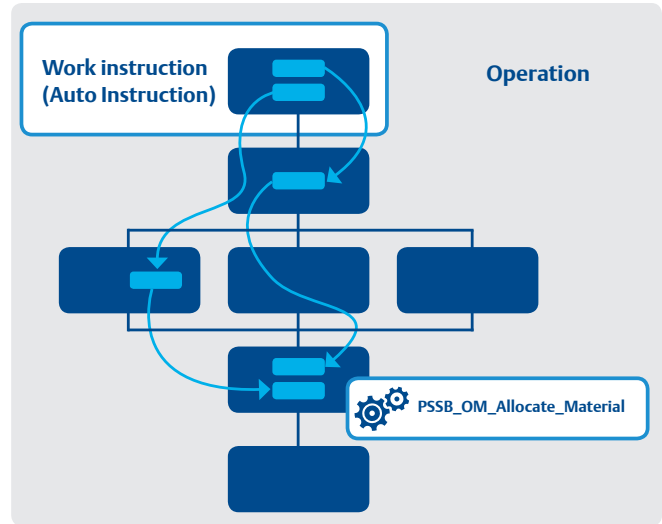
Create output materials and manage material movement. Update order status, custom properties, and order-related information. Create order-level campaigns and view or update bill of materials, order, and view component details.

### Equipment Tracking

Schedule and perform equipment events to manage equipment states. Modify and set equipment custom properties.

### Weigh and Dispense

Easily combine lots and transfer materials to improve the efficiency of your dispensary. Read scale data and send



Order Management Material Allocation behavior, PSSB\_OM\_Allocate\_Material, shown as part of a recipe work instruction.

scale commands to the electronic batch record for compliance reviews. Verify dispense containers. Area dispense and charge materials in a single action.

### Data Management

Manage data more effectively with XML transformation. Easily search and access data to support decision-making. Facilitate integration with third party systems. Attach files to batch records for a more complete history. Read and write files from Document Management system, including bill of materials, bill of equipment, or bill of parameters.

**Emerson**  
**North America, Latin America:**  
 ☎ +1 800 833 8314 or  
 ☎ +1 512 832 3774

**Asia Pacific:**  
 ☎ +65 6777 8211

**Europe, Middle East:**  
 ☎ +41 41 768 6111

🌐 [www.emerson.com/syncade](http://www.emerson.com/syncade)

©2018, Emerson. All rights reserved.

The Emerson logo is a trademark and service mark of Emerson Electric Co. All other marks are the property of their respective owners.

The contents of this publication are presented for informational purposes only, and while every effort has been made to ensure their accuracy, they are not to be construed as warranties or guarantees, express or implied, regarding the products or services described herein or their use or applicability. All sales are governed by our terms and conditions, which are available on request. We reserve the right to modify or improve the designs or specifications of our products at any time without notice.

