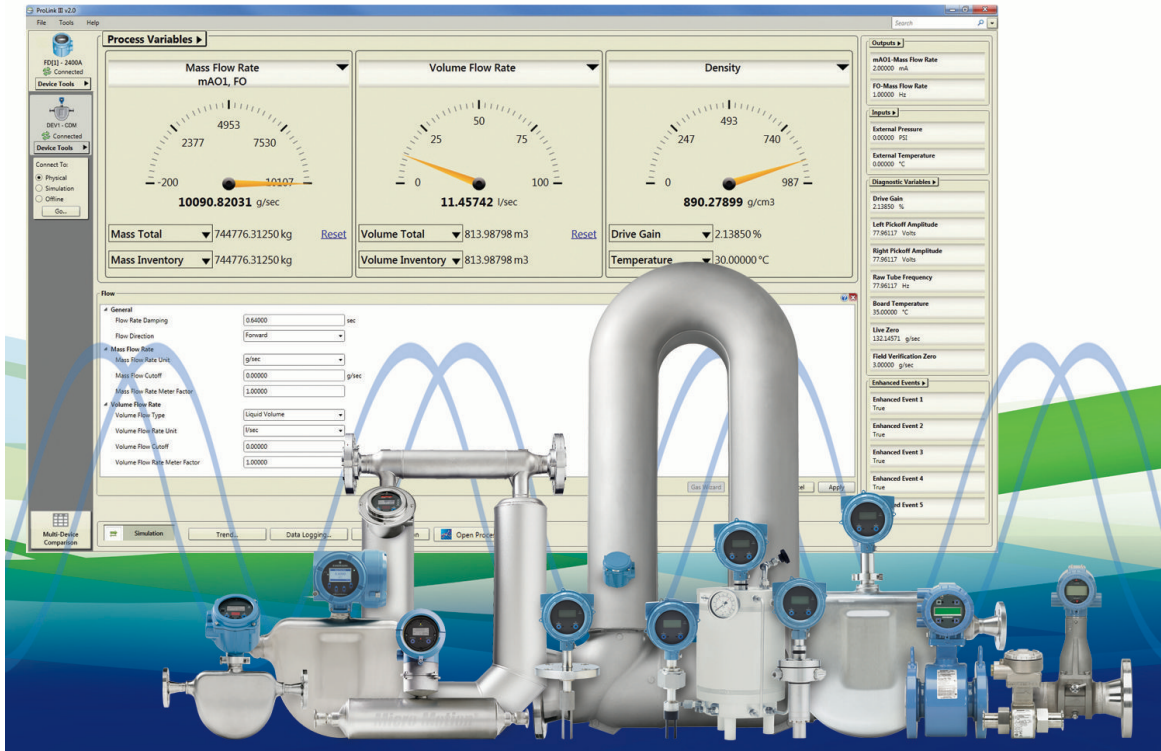


ProLink™ III Software

A configuration and service tool for Micro Motion™ and Rosemount Flow™ devices



World-class configuration, service, and troubleshooting tool

- Supports all Micro Motion flow, density, and viscosity meters.
- Supports Rosemount 8600D, 8732E, 8712E, 8712H, 8782, and 8800D
- Management and simulation of configuration files

Intuitive display of process variables and diagnostics

- Integrates with ProcessViz, an industry leading data visualization and troubleshooting tool that provides an intuitive display of process variables
- Enhanced data logging functionality, both on-demand or time-based
- Graphical process variable trending views

Support for multiple devices and protocols

- Supports HART®, Modbus® RS-485, USB-A to USB-A wired communications from PC to 5700 devices, and Modbus/TCP communications
- Simultaneously connect to multiple devices
- Process variable comparison tool for evaluating multiple devices simultaneously

ProLink III configuration and service software

ProLink III delivers all the power and flexibility you need to configure and manage Micro Motion and Rosemount Flow devices and analyze process data. ProLink III provides an easy-to-use interface that allows you to have your meter up and running quickly no matter how complex your configuration or diagnostic needs are.

ProLink III provides an intuitive, dashboard-like interface where you can simultaneously access all the information you may need to assess your meter's health. You can easily see your process variables and alert conditions from a single screen. You can also view detailed information about the raw signals being processed by a device; such as drive gain, time period, and pickoff values. This kind of information can be extremely helpful when troubleshooting device behavior and can minimize expensive downtime.

ProLink III also provides configuration capabilities that allow you to save and upload configuration information from one device to another. Or, you can use the offline configuration tool to configure a device prior to making a physical connection. With features like these, you can more efficiently manage the set up and commissioning of your Micro Motion or Rosemount Flow device.

Advantages

- Intuitive interface for clear, concise data portrayal
- Improved connectivity through HART, Modbus and Modbus/TCP support
- Task-oriented interface design that streamlines work practices
- Online process variable trending tool can highlight process control opportunities
- Capability to diagnose meters remotely using Modbus/TCP connection
- Simultaneously view process data from more than one meter
- Offline configuration reduces connection time to meters in hazardous areas
- Device simulation that allows you to understand a meter's capabilities and functionality
- Easily view calibration and configuration data in a printable report that allows you to quickly reference a device's setup
- Guided connection tool with a drag-and-drop interface that allows you to easily configure your device connection

Available ProLink III features per edition

ProLink III is available in two editions: Basic and Professional for either Micro Motion or Rosemount Flow. Depending on the edition you purchased, you have specific features enabled.

Table 1: ProLink III Micro Motion Basic and Professional features per edition

Feature	Basic		Professional	
	Coriolis transmitters	Density and viscosity meters	Coriolis transmitters	Density and viscosity meters
Alert notification	✓	✓	✓	✓
Alert resolution guide	✓	✓	✓	✓
Data logging			✓	✓
Device simulation			✓	✓
Diagnostics/inputs/outputs display	✓	✓	✓	✓
Full device configuration	✓	✓	✓	✓
Guided process support tools			✓	✓

Table 1: ProLink III Micro Motion Basic and Professional features per edition (continued)

Feature	Basic		Professional	
	Coriolis transmitters	Density and viscosity meters	Coriolis transmitters	Density and viscosity meters
Known density verification launch		✓		✓
Known density verification reports		✓		✓
Load and save the device configuration	✓	✓	✓	✓
Modbus®/TCP support	✓	✓	✓	✓
Multidevice comparison tool			✓	✓
Offline configuration management			✓	✓
Print Configuration			✓	✓
Process variable trending (one or more devices)			✓	✓
ProcessViz (displays logged data files that can be opened using ProcessViz)			✓	✓
Smart Meter Verification™ launch	✓		✓	
Smart Meter Verification reports ⁽¹⁾	✓		✓	

(1) Requires a Smart Meter Verification Pro license

Table 2: ProLink III Rosemount Flow Basic and Professional features per edition

Feature	Basic		Professional	
	Magmeter transmitters	Vortex transmitters	Magmeter transmitters	Vortex transmitters
Alert notification	✓	✓	✓	✓
Alert resolution guide	✓	✓	✓	✓
Data logging			✓	✓
Device simulation			✓	✓
Diagnostics/inputs/outputs display	✓	✓	✓	✓
Filter visualization tool				✓
Full transmitter configuration	✓	✓	✓	✓
Guided process support tools			✓	✓
Load and save the device configuration	✓	✓	✓	✓
Multidevice comparison tool			✓	✓
Offline configuration management			✓	✓
Process variable trending (one or more devices)			✓	✓
ProcessViz (displays logged data files that can be opened using ProcessViz)			✓	✓

Table 2: ProLink III Rosemount Flow Basic and Professional features per edition (continued)

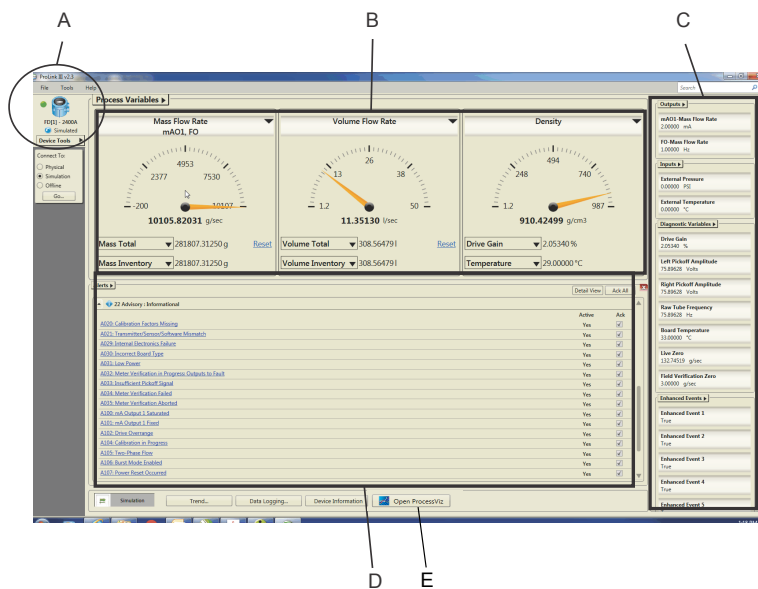
Feature	Basic		Professional	
	Magmeter transmitters	Vortex transmitters	Magmeter transmitters	Vortex transmitters
Smart Meter Verification launch	✓		✓	
Smart Meter Verification reports ⁽¹⁾	✓		✓	

(1) Requires a Smart Meter Verification license:

- Model code adder DA2 on 8712EM, 8732EM, and 8750W transmitters
- Model code adder MV on 8782 transmitters

ProLink III – A clear window into your process

ProLink III offers a clear, reliable view of your key process information from one main display screen. ProLink III can help you to manage your system process variables more efficiently – saving you time when investigating process problems – and reducing the need for physically viewing the local device displays. Regardless of how you have configured your device outputs, ProLink III displays all the process variable information that the device has available, including totalizer and inventory data.



- A. Display the transmitter type, address, and alarm status for each connected device, simulated configuration, or offline configuration.
- B. Provide quick access to your process measurements.
- C. Easily view other process measurements, diagnostic variables, and have quick access to view and change the configured settings.
- D. View active alerts for the connected device, and easily view recommended actions for troubleshooting each alert.
- E. Access the ProcessViz software from ProLink III. The ProcessViz button is active (enabled) only if ProcessViz is installed and licensed.

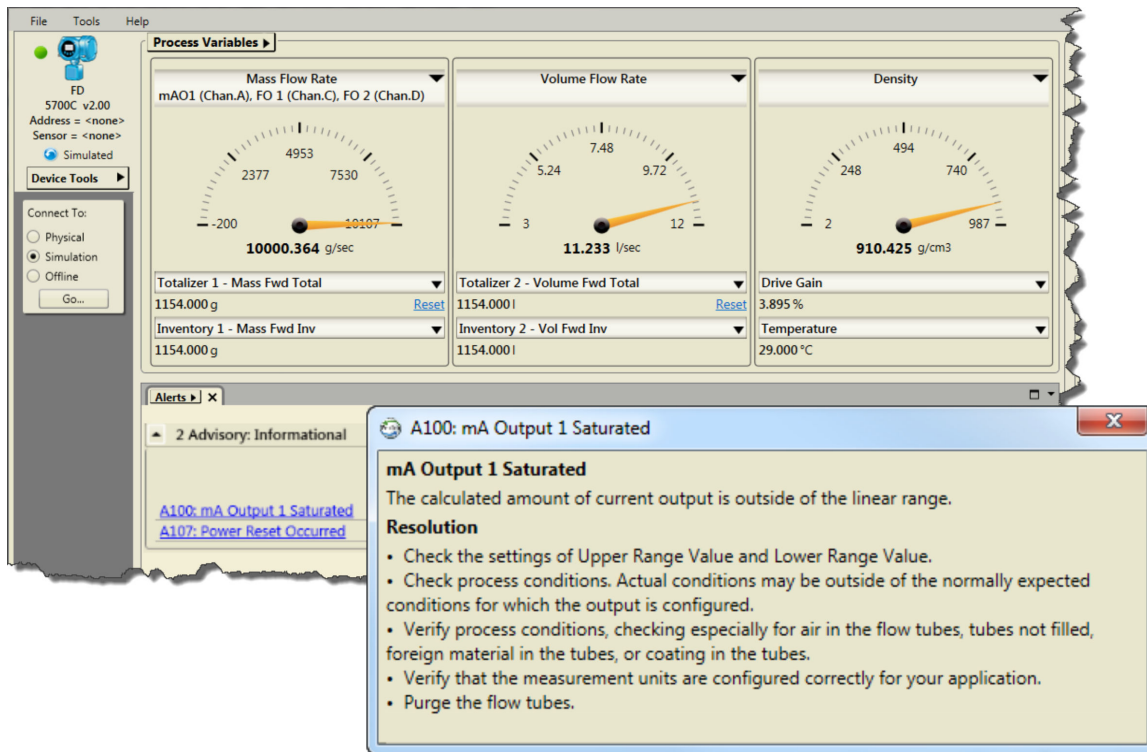
Easily configure your device from a single access point

With ProLink III, you can quickly navigate to the settings you need because all configuration information is accessible from a single access point. ProLink III communicates configuration changes to the device, which allows you to evaluate the effect of your changes and pick the right settings for your process. Additionally, you can save and load configurations to/from a file on your computer, allowing convenient set up of one or multiple devices. This same feature also allows you to choose the data transferred between devices, and provides a convenient method for backing up your device configuration.

Easy access to alerts for viewing and acknowledgment

Alert conditions are displayed by ProLink III on the main screen when you first connect to a device. This first view into the process makes alert handling and troubleshooting a fast and efficient process. Alert information is separated by severity so that you can quickly understand and prioritize remedial actions.

In addition, you have one-click access to alert information to help you quickly locate and respond to the source of the problem.

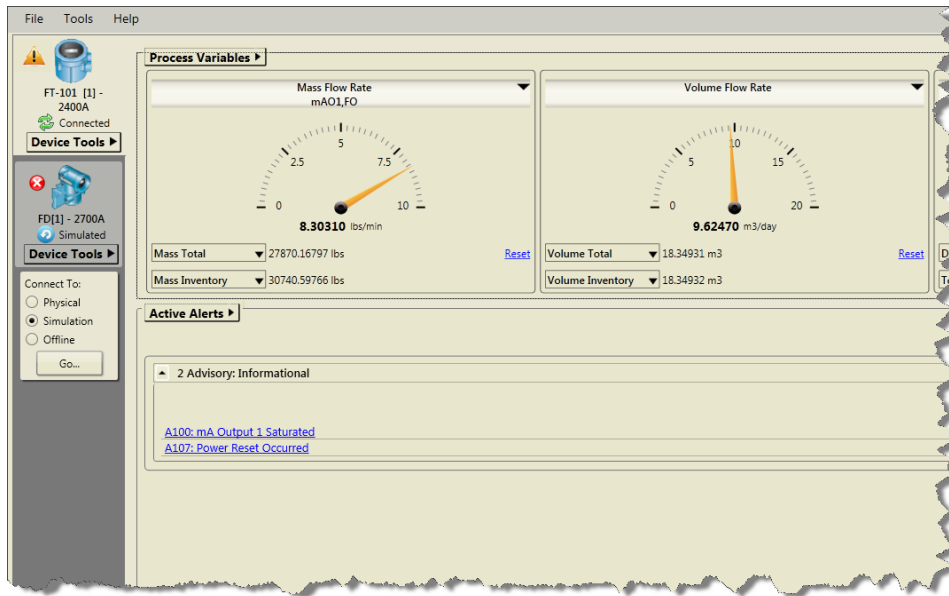


Use the alert view to quickly and efficiently manage alert conditions. You can easily understand the priority of the alerts and receive immediate support in knowing how to locate and respond to the problem’s source.

Simultaneously connect to multiple devices

You can simultaneously connect to multiple devices in your process. This feature allows you to more easily view your system performance and troubleshoot process conditions across more than one device. Additionally, ProLink III provides a multidevice comparison tool that allows you to view the outputs of each connected device from one main screen – making meter monitoring more efficient and less cumbersome than having to connect to each device separately. A common application of this feature is verifying the performance of a test meter against a known reference meter under the same process conditions.

When connected to multiple devices, you can easily navigate between the different transmitters by selecting or clicking on the desired transmitter tab. The highlighted tab shows the active device.



Use the multi-device comparison tool to view and compare the process variables, status and configuration of the connected devices.

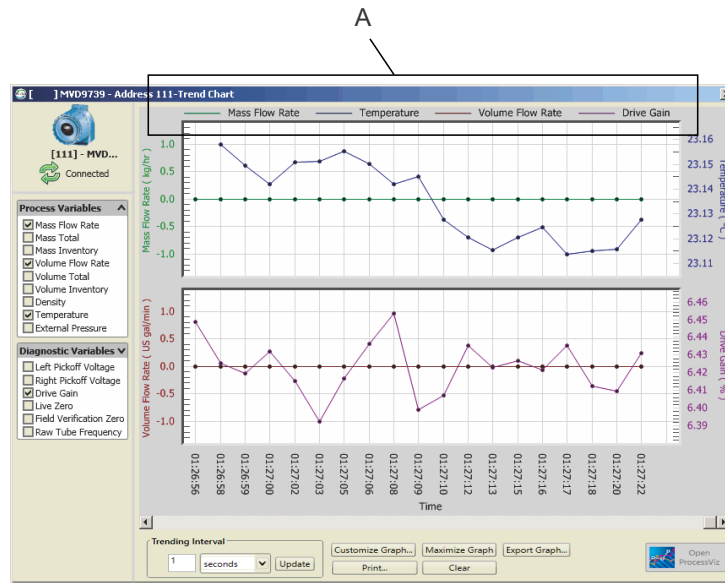
The 'Multi-Device Comparison' window displays a side-by-side comparison of two devices: FD(1) - 2400A (Simulated) and FD(1) - Model 270... (Simulated). The data is organized into several categories:

Variables	FD(1) - 2400A Simulated	FD(1) - Model 270... Simulated
Process Variables		
Mass Flow Rate	10030.68 g/sec	10040.95 g/sec
Mass Total	223365.2 kg	213384.3 kg
Volume Flow Rate	10.89553 l/sec	11.27843 l/sec
Volume Total	241.9771 m ³	219.0184 m ³
Output Variables		
mA Output 1 Value	2 mA	2 mA
Event 1 Status	False On/OFF 1=ON	False On/OFF 1=ON
Event 2 Status	True On/OFF 1=ON	True On/OFF 1=ON
Diagnostics		
Left Pickoff Amplitude	0.6237 Vpp	0.6237 Vpp
Left Pickoff Voltage	79.9997329711914 Volts	79.6817169189453 Volts
Line RTD Resistance	56.6931915283203 Ohms	56.6931915283203 Ohms
Configuration		
Base Mass Unit	g	g
Base Volume Unit	liters	liters

Monitor system performance with trending and data logging

The trending and data logging features in ProLink III help you to chart and graph selected process, diagnostic, and output variables. This look into time can help you understand what is really going on in the process so you can determine techniques for improving the productivity and quality of the process. You can save the data recorded by the data logging tool and view it in an external program (such as a spreadsheet application) to chart your data for further analysis. Or, the trending tool in ProLink III allows you to instantaneously view graphed key process variables for one or more devices.

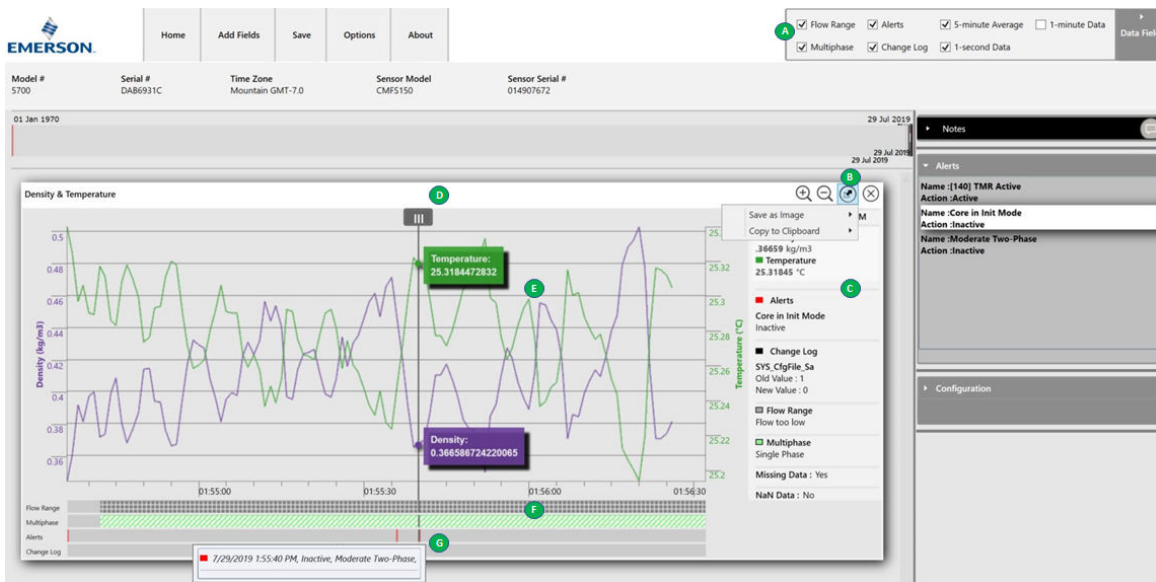
Use trending and data logging to track and monitor what is happening in your process.



A. The key at the top of the graph shows the variables displayed in the graphs and the corresponding color chosen to represent each variable in the graph.

Visualize and troubleshoot data with ProcessViz

ProcessViz provides a way to view your process variables so that you can better manage, improve, and troubleshoot them — saving you time and money.



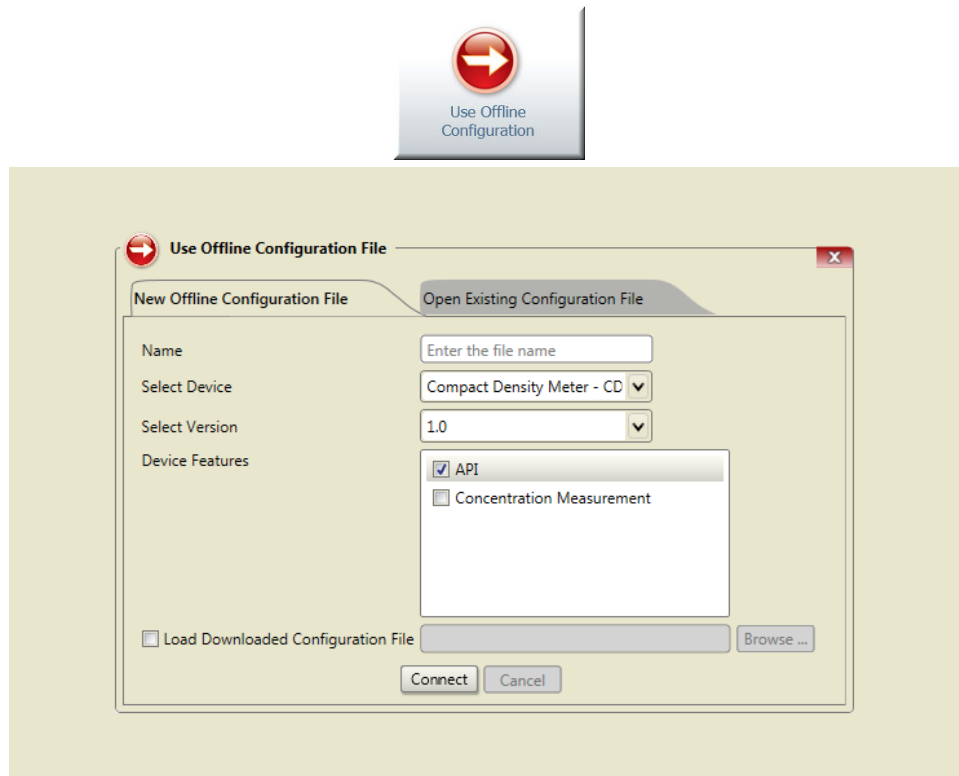
- A. Customize the view of your data value options.
- B. Export, save, and share your analysis.
- C. See all your process variable information, including alerts in a single view
- D. Skim the details of your process variables.
- E. Pinpoint the exact time of your process activities and interruptions.
- F. View detailed alert and time stamp information.

Offline configuration tool to facilitate transmitter setup

Use offline configurations to make named templates of commonly-used device configurations and store them in a database for later use. You can use the template to clone a device configuration to many target physical devices with small changes between them.

Creating an offline configuration

Choose to create an offline configuration and you can open an existing configuration file or create a new configuration file to more efficiently manage the set up of one or more devices.



Device simulation for a quick view into meter capabilities

Simulated devices allow you to create and edit device configuration data without connecting to a physical device. Using device simulation, you can visit and edit most device configuration screens, then save the modified configuration file for later use. During simulation, sample device outputs are provided so you can visit a number of ProLink III screens to see how most features work. However, the output simulations are not accurate recreations of device behaviors.

Simulating a device

Device simulation allows you to simulate a connection to one or multiple devices. This feature provides a convenient way for you to navigate the ProLink III interface and understand the key features available.



Support for advanced applications

If the device has advanced functionality such as Smart Meter Verification, concentration measurement, API referral/petroleum measurement, discrete batching, or Filling & Dosing software installed, you can configure these options with ProLink III. The appropriate menus and menu options are automatically populated by ProLink III if the measurements and options are supported by the device.

Supported Micro Motion and Rosemount Flow devices

1500 and 2500	8800D
1700 and 2700	9739 MVD
2200S	LF-Series
2400S	Compact Density Meter (CDM)
Series 3000 (MVD)	FMT
4200	Fork Density Meter (FDM)
5700	Fork Viscosity Meter (FVM)
8600D	Gas Density Meter (GDM)
8712E	Heavy Fuel Viscosity Meter (HFVM)
8712H	MVD™ Direct Connect™
8732E	Specific Gravity Meter (SGM)
8782	

ProLink III installation kits

ProLink III can communicate serial data from your computer to the device’s RS-485 or HART terminals. To help you make this connection, you can purchase a ProLink III installation kit that contains the appropriate converter or adapter for your connection. Micro Motion and Rosemount Flow recommend using certain converters and adapters that have been packaged into purchasable kits that can accompany ProLink III. For more information, refer to the ordering information.

Communication protocols

Protocol	Physical layer
HART	Bell 202
	RS-485
Modbus	RS-485
	Universal Serial Bus (USB)
Modbus/TCP	Ethernet

System requirements

Supported operating systems

For either a 32-bit (x86) or a 64-bit (x64) operating system:

- Windows Server 2016
- Windows 10
- Windows 8
- Windows 7
- Windows Vista (with Service Pack 1 or later)

Hardware requirements

Use the hardware requirements for your Windows OS version.

Ordering information

Product description

Model	Product description
PLK	ProLink software

ProLink version

Code	ProLink version
1	ProcessViz Data Visualization Software
2 ⁽¹⁾	Upgrade from ProLink II to ProLink III Professional version
3	ProLink III software – Professional version
4 ⁽¹⁾	Upgrade from ProLink III Basic to ProLink III Professional
5	ProLink III Professional Version Software and ProcessViz Data Visualization Software
9	ProLink III software – Basic version

(1) Requires completed Declaration of Ownership from prior version of ProLink, available as software upgrade only.

License

Code	License
U	Single user (one copy of ProLink III Professional Software and/or ProcessViz Software on a single computer)

Language

Code	Language
E	English
F	French
G	German
M	Chinese
S	Spanish
R	Russian
P	Portuguese

Converter

Code	Converter
A	<ul style="list-style-type: none"> ■ ProLink III: None - available with all ProLink III upgrade codes ■ ProcessViz: Converters are required only for ProLink III
V ⁽¹⁾	RS-232 to Bell 202 HART converter with integral cables
M ⁽¹⁾	RS-232 to RS-485 Modbus/HART converter with tester and cables
D ⁽¹⁾	Both RS-232 to Bell 202 HART converter and RS-232 to RS-485 Modbus/HART converter (options V and M)
E ⁽¹⁾	USB to Bell 202 HART converter with integral cables
F ⁽¹⁾	USB to RS-485 converter with integral cables
G ⁽¹⁾	USB to Bell 202 HART converter with integral cables and USB to RS-485 Modbus/HART converter and integral cables (options E and F)
H ⁽¹⁾	USB cable Type A (both ends) for 5700 transmitter
J ⁽¹⁾	USB cable Type A (both ends) for 5700 transmitter and USB to Bell 202 Hart converter with integral cables (options H and E)
K ⁽¹⁾	USB cable Type A (both ends) for 5700 transmitter and USB to RS485 converter with integral cables (options H and F)
L ⁽¹⁾	USB cable Type A (both ends) for 5700 transmitter and USB to Bell 202 Hart converter with integral cables, and USB to RS485 converter with integral cables (options H, E and F)

(1) Available only with ProLink III upgrade codes 3, 5, and 9.

For more information: www.emerson.com

©2021 Micro Motion, Inc. All rights reserved.

The Emerson logo is a trademark and service mark of Emerson Electric Co. Micro Motion, ELITE, ProLink, MVD and MVD Direct Connect marks are marks of one of the Emerson Automation Solutions family of companies. All other marks are property of their respective owners.

