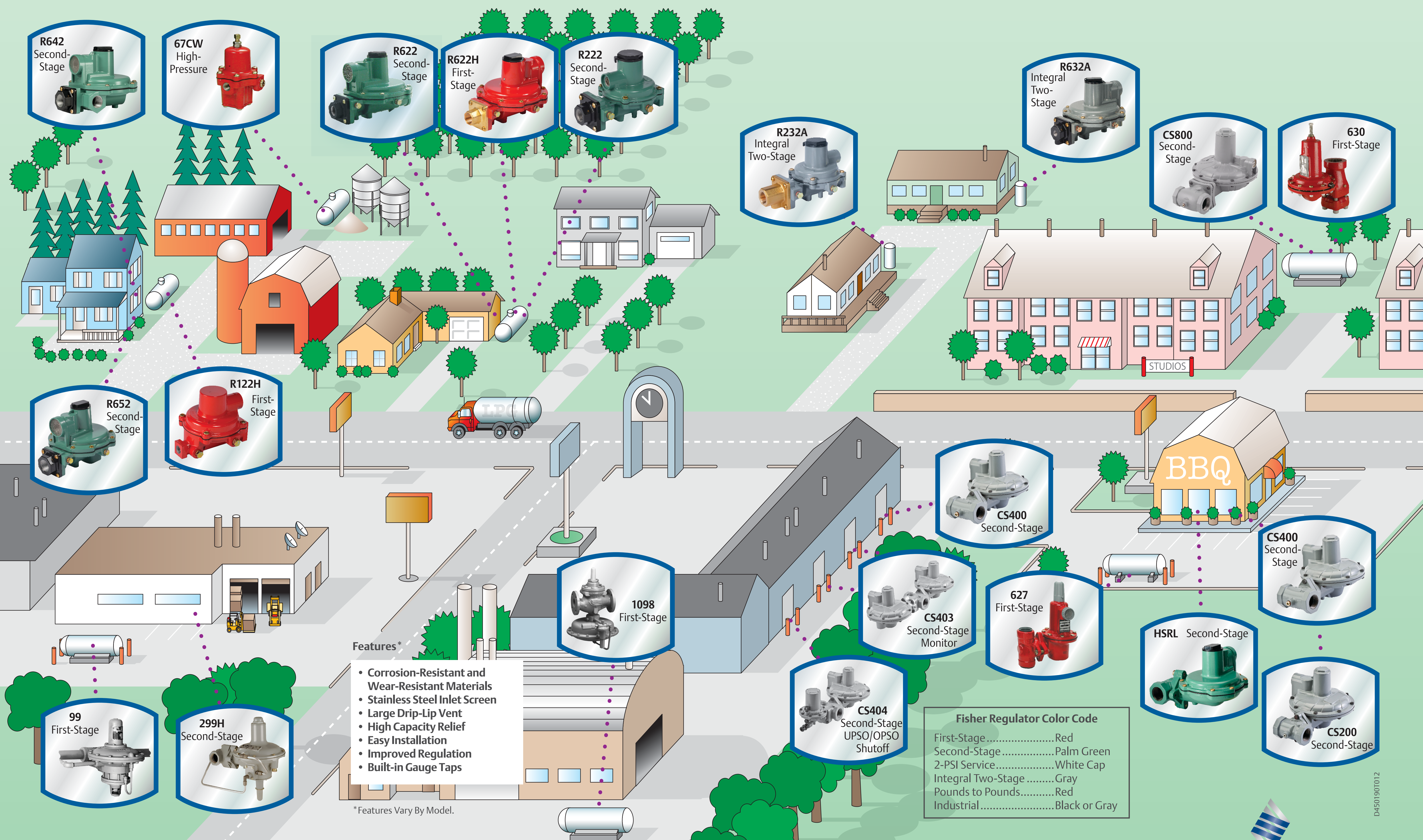


Regulators Application Map



- Features***
- Corrosion-Resistant and Wear-Resistant Materials
 - Stainless Steel Inlet Screen
 - Large Drip-Lip Vent
 - High Capacity Relief
 - Easy Installation
 - Improved Regulation
 - Built-in Gauge Taps

*Features Vary By Model.

Fisher Regulator Color Code

First-StageRed
Second-StagePalm Green
2-PSI ServiceWhite Cap
Integral Two-StageGray
Pounds to PoundsRed
IndustrialBlack or Gray

FISHER™

© 2010, 2019 Emerson Process Management Regulator Technologies, Inc. All rights reserved. Printed in the U.S.A. 10/19. Fisher, Emerson Process Management, and the Emerson Process Management design are marks of one of the Emerson Process Management group of companies. All other marks are the property of their respective owners.

EMERSON™

D4501901012