

# Enhance your steam plant efficiency with Fisher™ Type 92B regulators



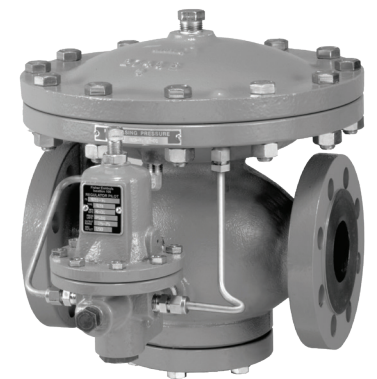
## FISHER™ Proven technology for reliable pressure control

### A proven solution

The Type 92B pressure reducing regulator is designed to reliably withstand dirty operating steam environments while providing accurate and stable pressure control. Industrial and commercial applications include heat exchangers, metered district energy systems, evaporators, digesters, chillers and boiler deaerator tanks.

CUSTOMER IMPACT	COMPONENTS
Improve steam plant efficiency	1 2 4 6
Reduce CO <sub>2</sub> emissions	1 2 3 4
Enhance performance and stability	2 3 4 6
Decrease maintenance costs	1 3 5 7

- 1 Dual flex-point double diaphragm**  
Extends cycle life and designed to operate in dirty steam
- 2 92B pilot**  
Provides accurate pressure control at high capacities and stability at low flow conditions
- 3 Integral pilot bellows**  
Minimizes sticking from scale buildup to withstand dirty steam
- 4 Dual stem guides**  
Improves shutoff and increases erosion resistance
- 5 Quick access to internal parts**  
Offers ease of maintenance and part replacements



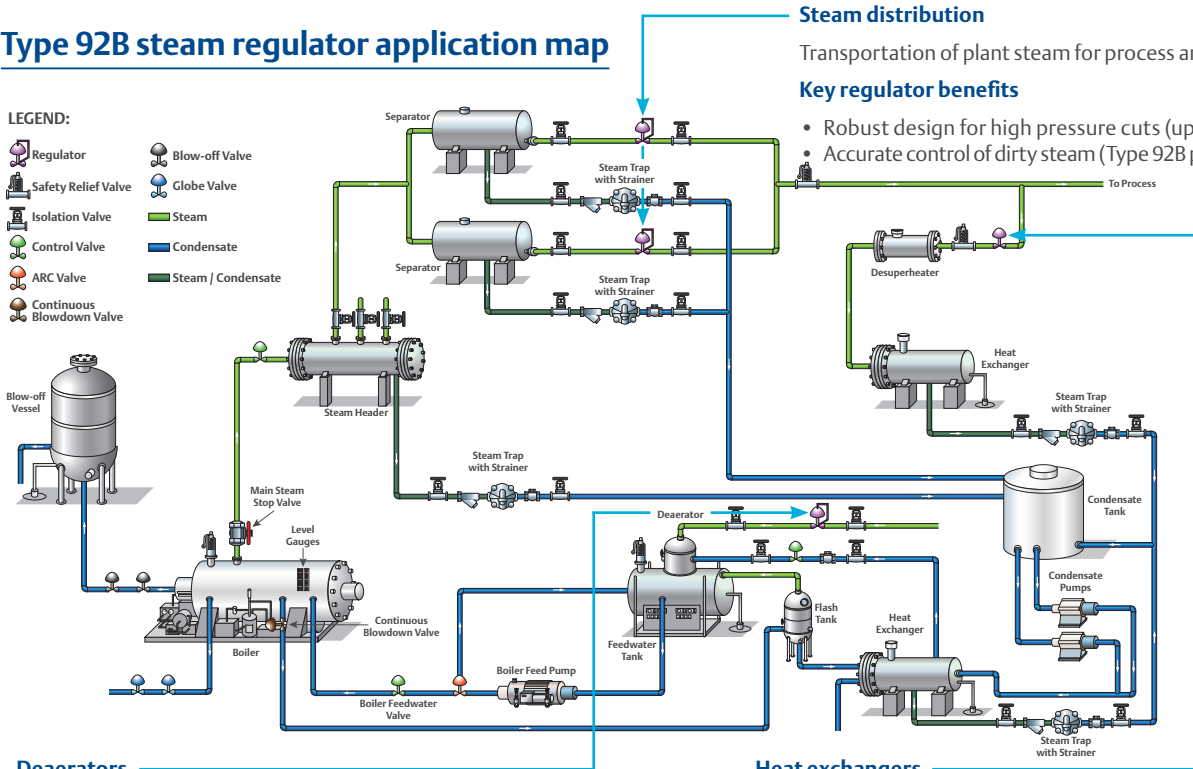
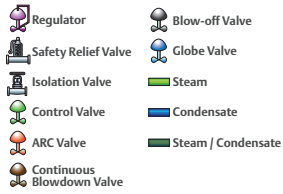
- 6 Rugged design**  
Withstands high pressure drops and reduces need for two units in series
- 7 Elevated actuator**  
Prevents condensate buildup in diaphragm



# Strength in versatility

## Type 92B steam regulator application map

### LEGEND:



### Steam distribution

Transportation of plant steam for process and utilization.

### Key regulator benefits

- Robust design for high pressure cuts (up to 300 psig)
- Accurate control of dirty steam (Type 92B pilot with integral bellows)

### Deaerators

Removes oxygen from boiler feedwater.

### Key regulator benefits

- Resilient design to minimize condensate buildup at low temperatures (dual stem guides/bellows)
- Steady continuous flow at high accuracies (recommended for lower cycle service)

### Heat exchangers

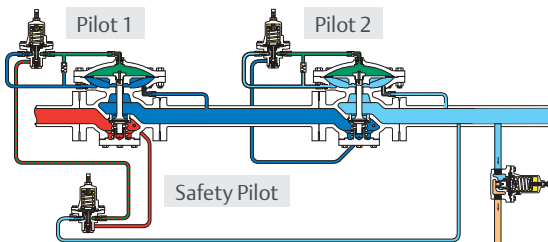
Transfers heat through steam convection

### Key regulator benefits

- Low control pressures for efficient energy transfer (versatile and accurate setpoints)
- Stable and high performance unit with prolonged service (dual flex point double metal diaphragm)

## Over pressure protection

### Safety override system



\*Only used for systems with upstream pressures less than 400 psig

### Safety override system / tandem steam pressure reducing valves

- ASME B31.1 compliant, eliminating need for PSV
- Keeps customers online upon failure of one unit
- Utilizes 92B safety override pilot

\*ASME B31.1-2020 Section 112.14.2(a)



Fisher™ Type 92B Self-Powered Control Valve Page

### Emerson Automation Solutions

#### Americas

T +1 800 558 5853  
T +1 972 548 3574

#### Europe

T +39 051 419 0611

#### Asia Pacific

T +65 6777 8211

#### Middle East / Africa

T +971 4811 8100

✉ [webadmin.regulators@emerson.com](mailto:webadmin.regulators@emerson.com)

🔍 [Fisher.com](http://Fisher.com)

📘 [Facebook.com/EmersonAutomationSolutions](https://Facebook.com/EmersonAutomationSolutions)

🌐 [LinkedIn.com/company/emerson-automation-solutions](https://LinkedIn.com/company/emerson-automation-solutions)

🐦 [Twitter.com/emr\\_automation](https://Twitter.com/emr_automation)