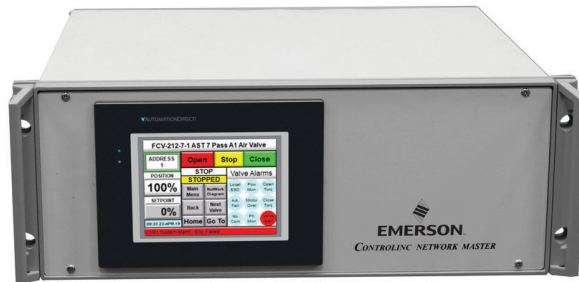


# M124 Controlinc Network Master

## Bettis XTE3000 Integration Procedure



*This page is intentionally left blank*

# Table of Contents

## **Section 1: Adding XTE3000 Actuators into Existing Network**

1.1	Update Firmware in Slot 1 Coprocessor Module .....	1
1.2	Configure Controlinc Network Master to Communicate with XTE3000 Actuators .....	1

## **Section 2: Replacing Actuators with XTE3000 in Existing Network**

2.1	Update Firmware in Slot 1 Coprocessor Module .....	5
2.2	Configure Controlinc Network Master to Communicate with XTE3000 Actuators .....	5

*This page is intentionally left blank*

**WARNING**

Failure to follow instructions for proper installation may result in errant information being displayed.

# Section 1: Adding XTE3000 Actuators into Existing Network

(Number of actuators increases)

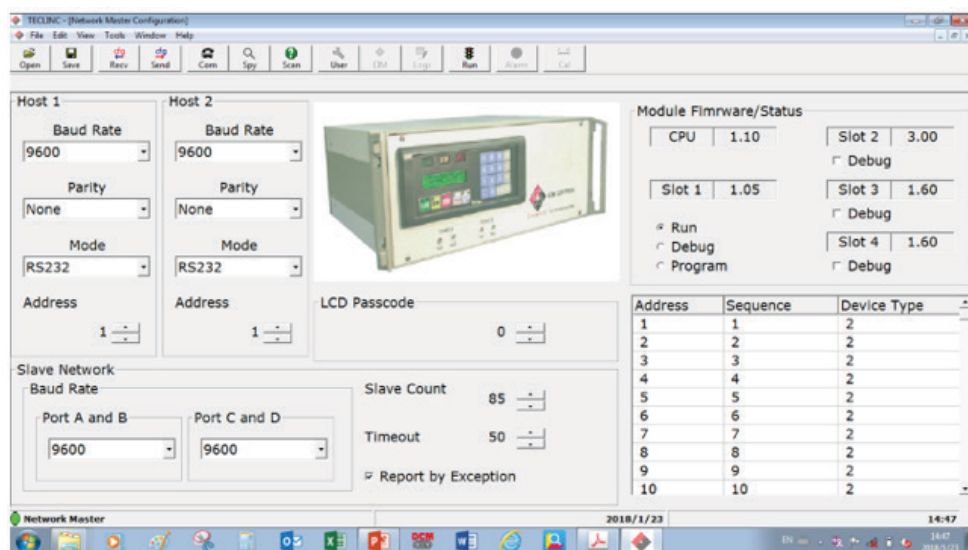
## 1.1 Update Firmware in Slot 1 Coprocessor Module

- Obtain firmware file "M124N500.abm" and "Controlinc Network Master Firmware Download Procedure" from Emerson website, link: [www.Emerson.com/Controlinc](http://www.Emerson.com/Controlinc).
- Use the procedure to download M124N500.abm firmware to Slot 1 Coprocessor module.

## 1.2 Configure Controlinc Network Master to Communicate with XTE3000 Actuators

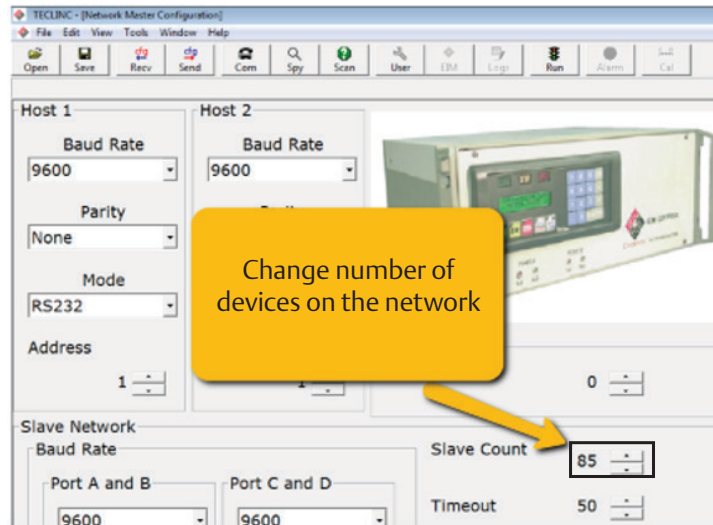
1. Update number of actuators in the loop.
  - Open up TECLINC and established communication, Figure 1.

Figure 1



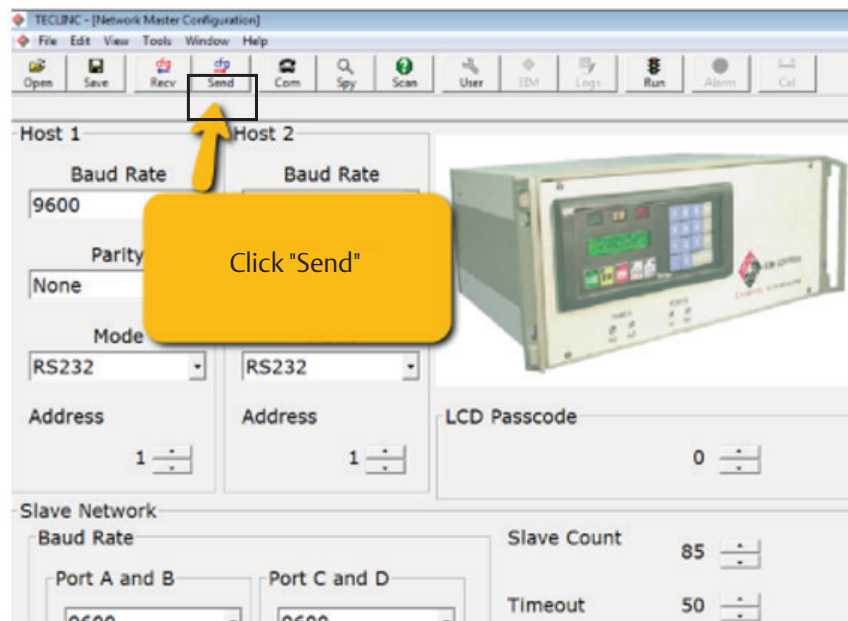
- Change the "Slave Count" number to match with the number of devices on the loop, Figure 2.

Figure 2



- Click "Send" and wait for 5 seconds then "Read" to make sure it is written, Figure 3.

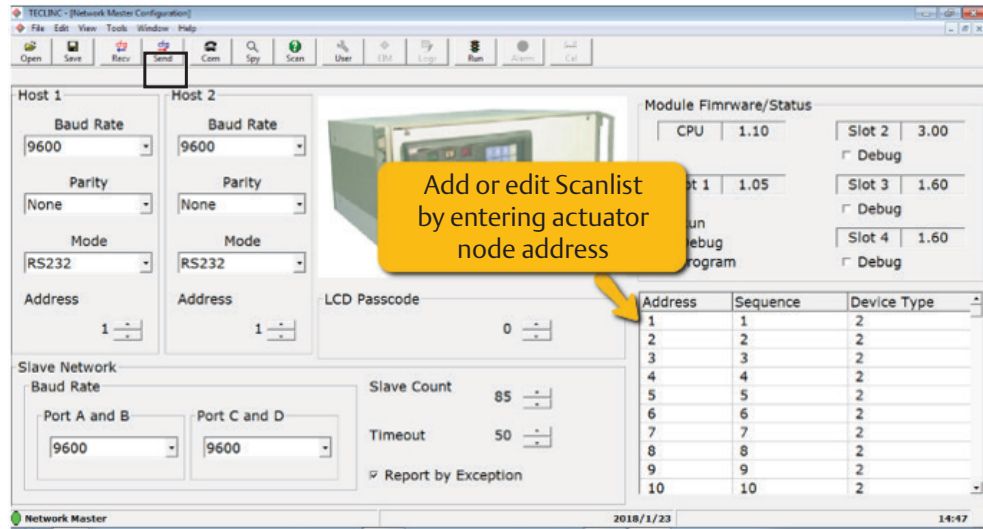
Figure 3



2. Edit Scanlist

- On TECLINC master Main Page, refer to Figure 1.
- Select "Address" to edit or to add more actuators to the network, Figure 4.

Figure 4



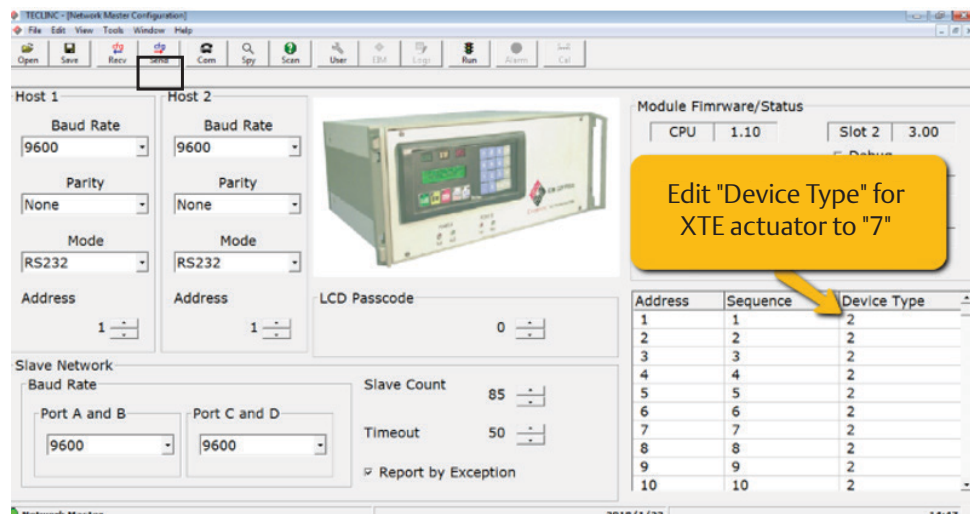
- Click "Send" and wait for 5 seconds then "Read" to verify it is written.

3. Enter Device Type

In order for Controlinc to recognize XTE3000 actuators, set "Device Type" to 7.

- On TECLINC master Main Page, refer to Figure 1.
- Select "Device Type" then enter "7" for XTE3000 actuator, Figure 5.

Figure 5



- Click "Send" and wait for 5 seconds then "Read" to make sure it is written.
- Cycle Network Master power.



# Section 2: Replacing Actuators with XTE3000 in Existing Network

(Number of actuators stays the same)

## 2.1 Update Firmware in Slot 1 Coprocessor Module

- Obtain firmware file "M124N500.abm" and "Controlinc Network Master Firmware Download Procedure" from Emerson website, link: [www.Emerson.com/Controlinc](http://www.Emerson.com/Controlinc).
- Use the procedure to download M124N500.abm firmware to Slot 1 Coprocessor module.

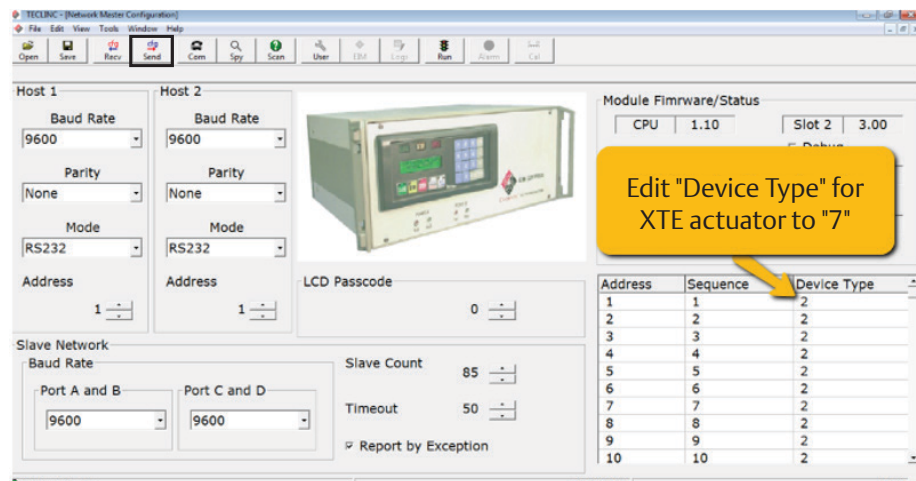
## 2.2 Configure Controlinc Network Master to Communicate with XTE3000 Actuators

1. No change to the number of actuators in the loop.
2. No change to the Scanlist.
3. Edit "Device Type".

In order for Controlinc to recognize XTE3000 actuators, change "Device Type" to 7.

- On Touch Panel go to Main Menu, Figure 1.
- Select "Device Type" then enter "7" for XTE3000 actuator, Figure 6.

Figure 6



- Click "Send" and wait for 5 seconds then "Read" to verify it is written.
- Cycle Network Master power.

**World Area Configuration Centers (WACC) offer sales support, service, inventory and commissioning to our global customers. Choose the WACC or sales office nearest you:**

***NORTH & SOUTH AMERICA***

19200 Northwest Freeway  
Houston TX 77065  
USA  
T +1 281 477 4100

Av. Hollingsworth  
325 Iporanga Sorocaba  
SP 18087-105  
Brazil  
T +55 15 3413 8888

***ASIA PACIFIC***

No. 9 Gul Road  
#01-02 Singapore 629361  
T +65 6777 8211

No. 1 Lai Yuan Road  
Wuqing Development Area  
Tianjin 301700  
P. R. China  
T +86 22 8212 3300

***MIDDLE EAST & AFRICA***

P. O. Box 17033  
Jebel Ali Free Zone  
Dubai  
T +971 4 811 8100

P. O. Box 10305  
Jubail 31961  
Saudi Arabia  
T +966 3 340 8650

24 Angus Crescent  
Longmeadow Business Estate East  
P.O. Box 6908 Greenstone  
1616 Modderfontein Extension 5  
South Africa  
T +27 11 451 3700

***EUROPE***

Holland Fásor 6  
Székesfehérvár 8000  
Hungary  
T +36 22 53 09 50

Strada Biffi 165  
29017 Fiorenzuola d'Arda (PC)  
Italy  
T +39 0523 944 411

For complete list of sales and manufacturing sites, please visit [www.emerson.com/actuationtechnologieslocations](http://www.emerson.com/actuationtechnologieslocations) or contact us at [info.actuationtechnologies@emerson.com](mailto:info.actuationtechnologies@emerson.com)

[www.emerson.com/bettis](http://www.emerson.com/bettis)

VCIOM-17028 ©2022 Emerson. All rights reserved.

The Emerson logo is a trademark and service mark of Emerson Electric Co. All other marks are property of their respective owners.

The contents of this publication are presented for information purposes only, and while effort has been made to ensure their accuracy, they are not to be construed as warranties or guarantees, express or implied, regarding the products or services described herein or their use or applicability. All sales are governed by our terms and conditions, which are available on request. We reserve the right to modify or improve the designs or specifications of our products at any time without notice.

