



# ANDERSON GREENWOOD MARVAC FIGURE 785S EMERGENCY RELIEF MANHOLE INSTALLATION AND MAINTENANCE INSTRUCTIONS

Before installation these instructions must be read fully and understood

## SAFETY PRECAUTIONS

Read and understand this instruction manual before installing, operating or performing maintenance on a Figure 785S emergency relief manhole. Follow all precautions and warnings noted herein when installing, operating or performing maintenance on this equipment.

### Safety precaution definitions

#### CAUTION

*Damage to equipment may result if this precaution is disregarded.*

#### WARNING

*Direct injury to personnel or damage to equipment that can cause injury to personnel may result if this precaution is not followed.*

#### NOTE

This manual is issued for guidance only and does not affect our standard terms and conditions and our product limited warranty, all of which are available upon request.

## 1 INSTALLATION

785S emergency relief manholes must be mated with the appropriate flange.

1. These valves must be gasketed and bolted to a flat machined horizontal flange, bolts are to be tightened uniformly to ensure a good seal.
2. The pressure on these valves is controlled by compression springs, which are adjusted and set at works before dispatch.
3. This valve does not contain any internal packing. Therefore, internal checks should not be necessary.
4. It is recommended that carbon steel valves be given a coat of paint immediately after installation is complete. Apply paint to external surfaces only.

## 2 MAINTENANCE

### (during atmospheric venting period)

#### WARNING

*Relief vents must be isolated from tank pressure before servicing. All gas must be blocked and pressure vented safely.*

*Wear appropriate gloves and/or breathing apparatus if hazardous vapors are present.*

Refer to Figure 1

1. Note exact position (height) of top spring washer (item 7).
2. Remove locknuts (item 6) and unscrew nuts (item 5) remove spring washers (item 7) and springs.
3. Inspect O-rings (item 3) for damage and replace if necessary.
4. Re-assemble in reverse order.
5. Reset top spring washer to its original position (height), tighten locknuts.
6. Check pressure relief setting on test run and adjust if necessary.
7. Ensure when adjusting springs that there is a maximum height tolerance of  $\pm 2\text{mm}$  between each of the spring arrangements.

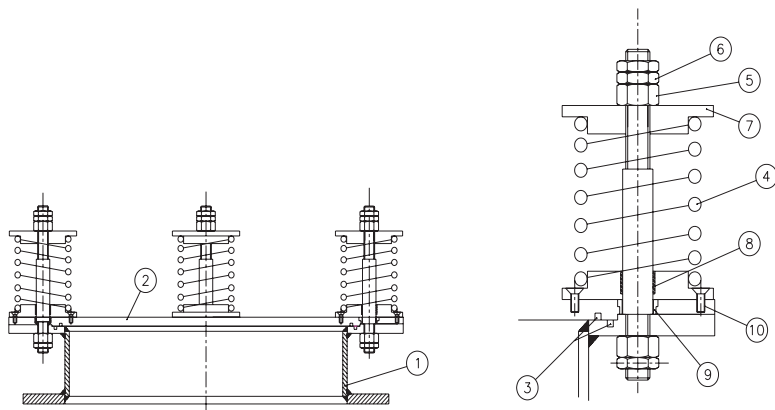
#### NOTE

The efficiency of the valve depends on maintaining good seating surfaces. Therefore, maintenance periods should be adjusted to suit service conditions.

# ANDERSON GREENWOOD MARVAC FIGURE 785S EMERGENCY RELIEF MANHOLE

## INSTALLATION AND MAINTENANCE INSTRUCTIONS

FIGURE 1 - TYPICAL ASSEMBLY



### 3 SPARES

When spare parts are required, the customer should quote the valve size, serial number, the item number and the material of the parts required.

The valve size and serial number can be obtained from the valve identification label. The item number and description can be obtained from the arrangement (left).

#### Recommended spares

Item 3 O-rings

### PARTS LIST

Item	Description	CS specification	SS specification
1	Base	C. Steel	316 SS
2	Cover plate	C. Steel	316 SS
3	Seal	Nitrile	Nitrile
4	Spring	316 SS	316 SS
5	Nut	316 SS	316 SS
6	Lock nut	316 SS	316 SS
7	Spring washer	316 SS	316 SS
8	Bearing	316 SS	316 SS
9	Bush	Nylatron	Nylatron
10	Screws	316 SS	316 SS

Neither Emerson, Emerson Automation Solutions, nor any of their affiliated entities assumes responsibility for the selection, use or maintenance of any product. Responsibility for proper selection, use, and maintenance of any product remains solely with the purchaser and end user.

Anderson Greenwood is a mark owned by one of the companies in the Emerson Automation Solutions business unit of Emerson Electric Co. Emerson Automation Solutions, Emerson and the Emerson logo are trademarks and service marks of Emerson Electric Co. All other marks are the property of their respective owners.

The contents of this publication are presented for informational purposes only, and while every effort has been made to ensure their accuracy, they are not to be construed as warranties or guarantees, express or implied, regarding the products or services described herein or their use or applicability. All sales are governed by our terms and conditions, which are available upon request. We reserve the right to modify or improve the designs or specifications of such products at any time without notice.