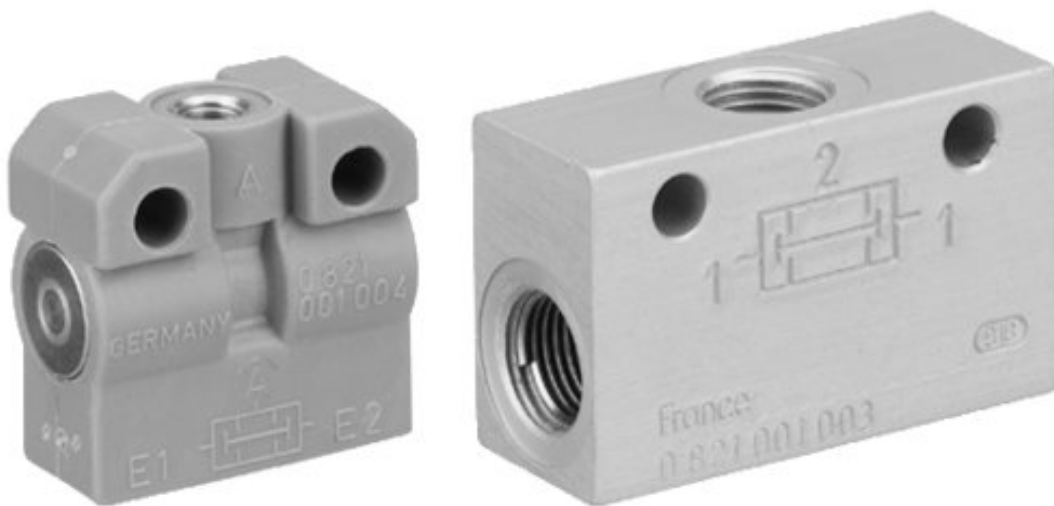


## Zweidruckventile (UND)



AVENTICS™ Zweidruckventile (UND)

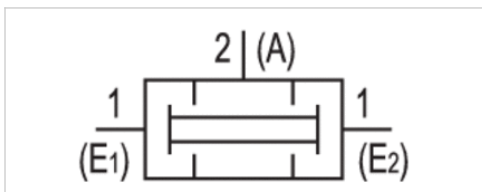


# Zweidruckventil (UND)

- $Q_n = 80-800 \text{ l/min}$
- Rohranschluss
- Druckluftanschluss Eingang M5 G 1/8 G 1/4
- Druckluftanschluss Ausgang M5 G 1/8 G 1/4



Bauart	Sitzventil
Dichtprinzip	weich dichtend
Logikfunktion	UND
Betriebsdruck min./max.	1 ... 10 bar
Umgebungstemperatur min./max.	0 ... 80 °C
Mediumstemperatur min./max.	0 ... 80 °C
Medium	Druckluft
Max. Partikelgröße	5 $\mu\text{m}$
Ölgehalt der Druckluft	0 ... 5 $\text{mg/m}^3$
Gewicht	Siehe Tabelle unten



## Technische Daten

Materialnummer	Druckluftanschluss	Druckluftanschluss	Durchfluss $Q_n$	Gehäuse
	Eingang	Ausgang		
0821001004	M5	M5	80 l/min	Polyamid
0821001003	G 1/8	G 1/8	300 l/min	Aluminium
0821001002	G 1/4	G 1/4	800 l/min	Aluminium

Materialnummer	Gewindebuchse	Gewicht	Abb.
0821001004	Messing	0,011 kg	Fig. 1
0821001003	Aluminium	0,038 kg	Fig. 2
0821001002	Aluminium	0,1 kg	Fig. 2

Nenndurchfluss  $Q_n$  bei 6 bar und  $\Delta p = 1 \text{ bar}$

## Technische Informationen

Der Drucktaupunkt muss mindestens 15 °C unter der Umgebungs- und Mediumtemperatur liegen und darf max. 3 °C betragen. Der Ölgehalt der Druckluft muss über die gesamte Lebensdauer konstant bleiben.

Verwenden Sie ausschließlich von AVENTICS zugelassene Öle. Weitere Informationen finden Sie im Dokument „Technische Informationen“ (erhältlich im MediaCentre).

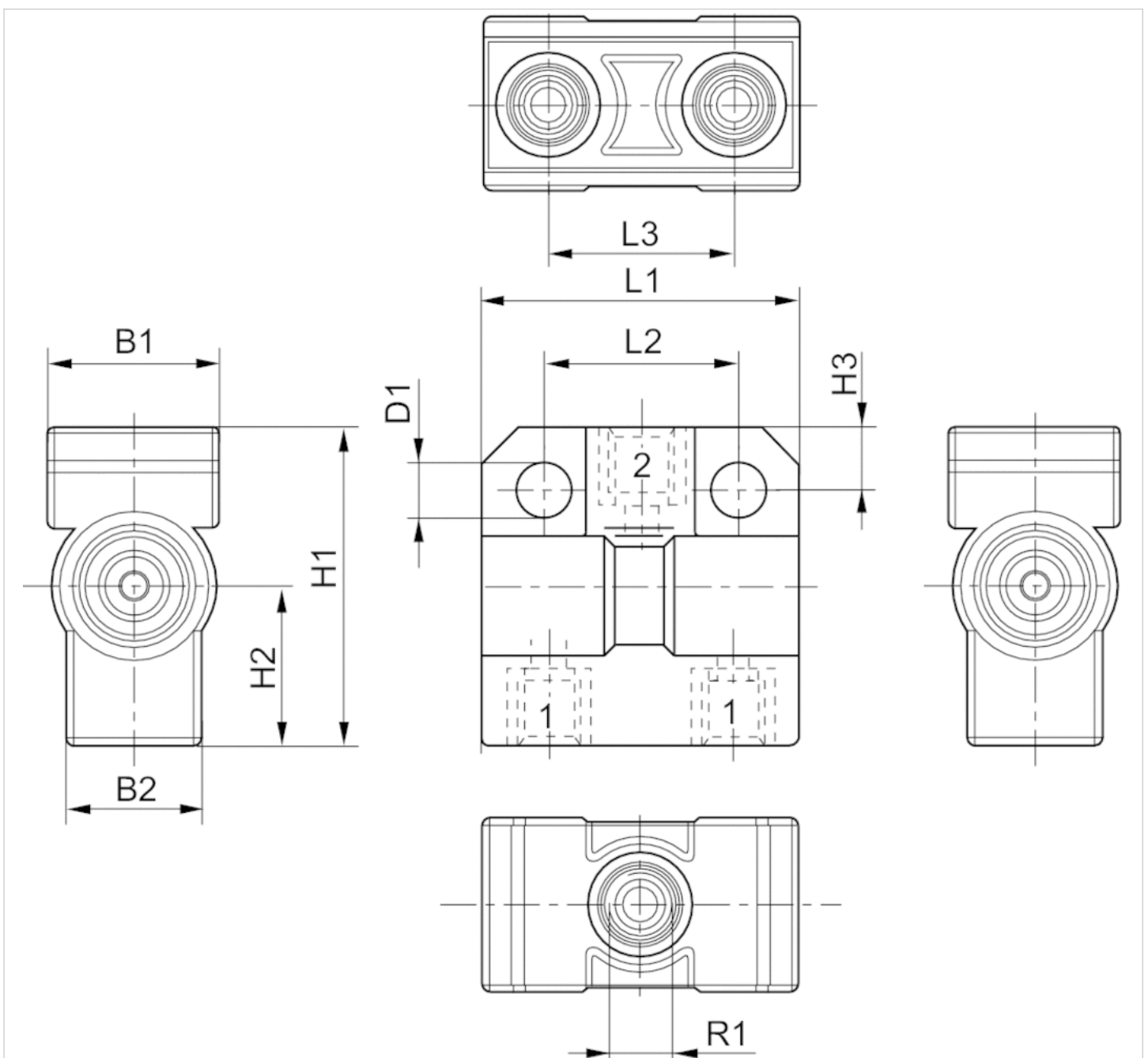
## Technische Informationen

### Werkstoff

Gehäuse	Polyamid Aluminium
Dichtungen	Acrylnitril-Butadien-Kautschuk
Gewindebuchse	Messing Aluminium

## Abmessungen

Fig. 1



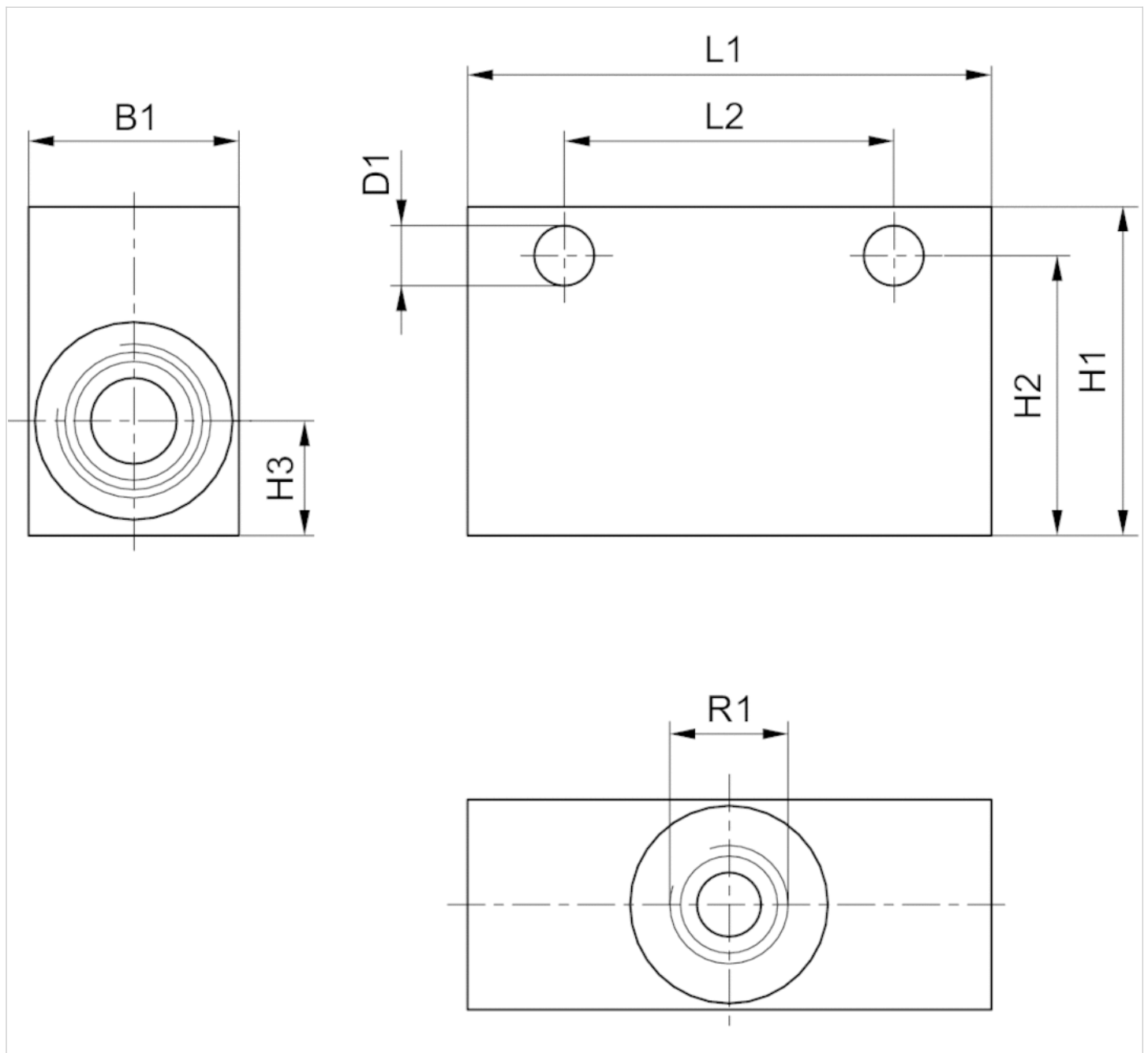
## Abmessungen

Materialnummer	R1	B1	B2	D1	H1	H2	H3	L1	L2	L3	*
0821001004	M5	14	11	4.3	26	13	5	26	16	15	5

\* = Gewindetiefe

## Abmessungen

Fig. 2



## Abmessungen

Materialnummer	R1	B1	D1	H1	H2	H3	L1	L2	*
0821001003	G 1/8	16	4.3	25	21	8.5	40	25	8
0821001002	G 1/4	25	5.5	32	26	9.5	55	38	12

\* = Gewindetiefe

# Efficient pneumatic solutions, our program: cylinders and drives, valves and valve systems, air supply management



Visit us: [Emerson.com/Aventics](https://www.emerson.com/Aventics)

Your local contact: [Emerson.com/contactus](https://www.emerson.com/contactus)



[Emerson.com](https://www.emerson.com)



[Facebook.com/EmersonAutomationSolutions](https://www.facebook.com/EmersonAutomationSolutions)



[LinkedIn.com/company/Emerson-Automation-Solutions](https://www.linkedin.com/company/Emerson-Automation-Solutions)



[Twitter.com/EMR\\_Automation](https://twitter.com/EMR_Automation)

An example configuration is depicted on the title page. The delivered product may thus vary from that in the illustration. Subject to change. This Document, as well as the data, specifications and other information set forth in it, are the exclusive property of AVENTICS GmbH. It may not be reproduced or given to third parties without its consent. Only use the AVENTICS products shown in industrial applications. Read the product documentation completely and carefully before using the product. Observe the applicable regulations and laws of the respective country. When integrating the product into applications, note the system manufacturer's specifications for safe use of the product. The data specified only serve to describe the product. No statements concerning a certain condition or suitability for a certain application can be derived from our information. The information given does not release the user from the obligation of own judgement and verification. It must be remembered that the products are subject to a natural process of wear and aging.

The Emerson logo is a trademark and service mark of Emerson Electric Co. Brand logotype are registered trademarks of one of the Emerson family of companies. All other marks are the property of their respective owners. © 2020 Emerson Electric Co. All rights reserved.  
2020-12



**CONSIDER IT SOLVED™**