



IECEX Certificate of Conformity

INTERNATIONAL ELECTROTECHNICAL COMMISSION IEC Certification System for Explosive Atmospheres

for rules and details of the IECEx Scheme visit www.iecex.com

Certificate No.: **IECEX BAS 16.0109X** Page 1 of 4 Certificate history:
Status: **Current** Issue No: 2 [Issue 1 \(2018-09-17\)](#)
[Issue 0 \(2016-12-21\)](#)
Date of Issue: 2023-11-14
Applicant: **Topworx Incorporated**
3300 Fern Valley Road
Louisville
Kentucky 40213
United States of America
Equipment: **K1 & K2 Series IS Position Monitors**
Optional accessory:
Type of Protection: **Intrinsic Safety & Protection by Enclosure 'tb'**
Marking: **Ex ia IIC T4/T5/T6 Gb**
Ex ib IIC T4/T6 Gb (FISCO 'PL' marked Models only)
Ex tb III C T135°C / T100°C / T85°C Db (Except 'SC' Marked Models)

Approved for issue on behalf of the IECEx
Certification Body:

R.S. Sinclair

Position:

Technical Manager

Signature:
(for printed version)

Date:
(for printed version)

14/11/2023

1. This certificate and schedule may only be reproduced in full.
2. This certificate is not transferable and remains the property of the issuing body.
3. The Status and authenticity of this certificate may be verified by visiting www.iecex.com or use of this QR Code.



Certificate issued by:

SGS UK Limited
Rockhead Business Park
Staden Lane
Buxton, Derbyshire SK17 9RZ
United Kingdom





IECEX Certificate of Conformity

Certificate No.: **IECEX BAS 16.0109X**

Page 2 of 4

Date of issue: 2023-11-14

Issue No: 2

Manufacturer: **Topworx Incorporated**
3300 Fern Valley Road
Louisville
Kentucky 40213
United States of America

Manufacturing locations: **Topworx Incorporated**
3300 Fern Valley Road
Louisville
Kentucky 40213
United States of America

Asco Joucomatic Limited Trading as
Asco Numatics
2 Pit Hey Place
West Pimbo
Skelmersdale
Lancashire WN8 9PG
United Kingdom

This certificate is issued as verification that a sample(s), representative of production, was assessed and tested and found to comply with the IEC Standard list below and that the manufacturer's quality system, relating to the Ex products covered by this certificate, was assessed and found to comply with the IECEX Quality system requirements. This certificate is granted subject to the conditions as set out in IECEX Scheme Rules, IECEX 02 and Operational Documents as amended

STANDARDS :

The equipment and any acceptable variations to it specified in the schedule of this certificate and the identified documents, was found to comply with the following standards

[IEC 60079-0:2017](#) Explosive atmospheres - Part 0: Equipment - General requirements
Edition:7.0

[IEC 60079-11:2011](#) Explosive atmospheres - Part 11: Equipment protection by intrinsic safety "i"
Edition:6.0

[IEC 60079-31:2013](#) Explosive atmospheres - Part 31: Equipment dust ignition protection by enclosure "t"
Edition:2

This Certificate **does not** indicate compliance with safety and performance requirements other than those expressly included in the Standards listed above.

TEST & ASSESSMENT REPORTS:

A sample(s) of the equipment listed has successfully met the examination and test requirements as recorded in:

Test Reports:

[GB/BAS/ExTR16.0262/00](#)

[GB/SGS/ExTR23.0106/00](#)

Quality Assessment Reports:

[GB/SIR/QAR06.0056/11](#)

[GB/SIR/QAR07.0025/11](#)



IECEX Certificate of Conformity

Certificate No.: **IECEX BAS 16.0109X**

Page 3 of 4

Date of issue: 2023-11-14

Issue No: 2

EQUIPMENT:

Equipment and systems covered by this Certificate are as follows:

The K1 Series IS Position Monitor comprises either a stainless steel or painted aluminium enclosure containing a number of terminal blocks, up to three volt-free switches, up to three certified proximity switches or sensors, a potentiometer or a certified transmitter in any combination plus interconnection facilities for remote mounted intrinsically safe equipment connections.

The larger K2 Series IS Position Monitor comprises either a stainless steel or painted aluminium enclosure containing a number of terminal blocks, up to four volt-free switches, up to four certified proximity switches or sensors, a potentiometer or a certified transmitter in any combination plus interconnection facilities for remote mounted intrinsically safe equipment connections.

The K1 & K2 Series IS Position Monitors may include an optional mechanical visual position indicator. External connections to the equipment are made using screw terminals via threaded entries into the enclosure. The installation of the external connections and plugging of unused entries must be carried out using appropriately certified IP6x cable glands and blanking plugs.

Gas only certified variants of the equipment (-SC Model No. prefix) are available with external connections via either Harting or Seacon Plug and Socket connectors.

See the Certificate Annex for model, electrical and temperature parameters.

SPECIFIC CONDITIONS OF USE: YES as shown below:

1. The cable glands used as entries to the enclosure must be suitably certified cable glands to the requirements of IEC 60079-0, Edition 7, including Annex A, with a minimum IP rating of IP6X in order to comply with the requirements of IEC 60079-31, Edition 2.
2. Any unused entries must be fitted with a suitably certified blanking plug certified to the requirements of IEC 60079-0, Edition 7 with a minimum IP rating of IP6X in order to comply with the requirements of IEC 60079-31, Edition 2.



IECEX Certificate of Conformity

Certificate No.: **IECEX BAS 16.0109X**

Page 4 of 4

Date of issue: 2023-11-14

Issue No: 2

DETAILS OF CERTIFICATE CHANGES (for issues 1 and above)

Variation 2.1

Confirm the current equipment design meets the requirements of IEC 60079-0:2017.

Variation 2.2

Introduction of new conditions of use. "X" suffix added to the certificate number.

ExTR: **GBSGS/ExTR23.0106/00**

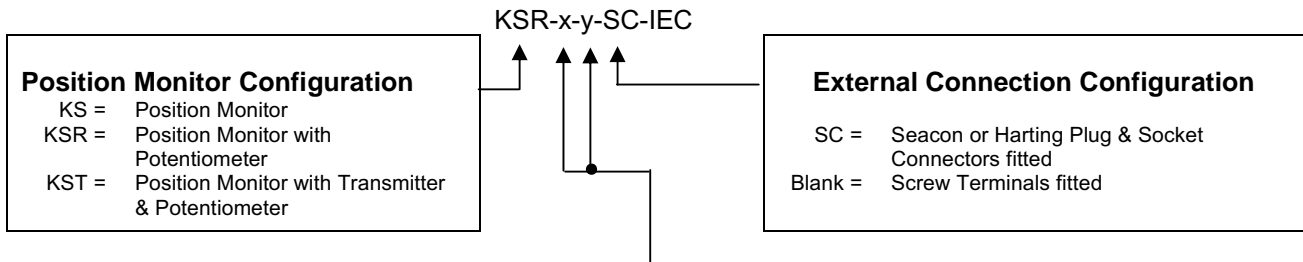
File Reference: **21/0357**

Annex:

[IECEX BAS 16.0109 Annex.pdf](#)

K1 & K2 Series IS Position Monitor
Model Range

The following models configurations of the K1 & K2 Series IS Position Monitors are available: -



Position Monitor Configuration – 1 or 2 of the following component types fitted

- M Volt-Free Contacts
- MH Volt-Free Contacts (100°C High Ambient Temperature)
- MR Volt-Free Contacts with Resistors
- LM Volt-Free Contacts (-50°C Low Ambient Temperature)
- LMH Volt-Free Contacts (-50°C to 100°C Ambient Temperature Range)
- LMR Volt-Free Contacts with Resistors (-50°C Low Ambient Temperature)
- P Type 3 Pepperl and Fuchs Proximity Switches / Sensors
- PH Type 1 Pepperl and Fuchs Proximity Switches / Sensors
- LP Type 3 -40°C Low Ambient Temperature Pepperl and Fuchs Proximity Switches / Sensors
- LP-50 Type 3 -50°C Low Ambient Temperature Pepperl and Fuchs Proximity Switches / Sensors
- LPH Type 1 -40°C Low Ambient Temperature Pepperl and Fuchs Proximity Switches / Sensors
- LPH-50 Type 1 -50°C Low Ambient Temperature Pepperl and Fuchs Proximity Switches / Sensors
- F IFM Proximity Switches / Sensors
- LF -40°C Low Ambient Temperature IFM Proximity Switches / Sensors
- PF -40°C Low Ambient Temperature PR Electronics Transmitter
- PL -40°C Low Ambient Temperature PR Electronics FISCO 'ib' Transmitter
- T Hans Turck GmbH Proximity Switches / Sensors
- LT -40°C Low Ambient Temperature Hans Turck GmbH Proximity Switches / Sensors
- ET Endress & Hauser Transmitter
- AT ABB Automation Product GmbH Transmitter
- PT PR Electronics Transmitter
- RT Rosemount Transmitter
- T4 T4 Potentiometer fitted (KSR Models only)
- T6 T6 / T5 / T4 Potentiometer fitted (KSR Models only)

See Table 3 for certification details of the above Proximity Switches / Sensors and Transmitters

Table 1 lists the certification codes and input parameters of the various configurations of the gas and dust certified K1 & K2 Series IS Position Monitor.

Table 2 lists the certification codes and input parameters of the various configurations of the gas only certified K1 & K2 Series IS Position Monitor.

In addition to the input parameters specified below, all variants of the equipment can be additionally fitted with terminals for the connection of remote I.S equipment. These terminal connections have the following input parameters:

$U_i = 30V$

Table 1: Gas & Dust certified Model Certification Code & Input Parameters

Model Number	Certification Code(s)	Input Parameters
KS-M-IEC	Ex ia IIC T6 Gb (-20°C ≤ T _a ≤ +70°C) Ex tb IIIC T85°C Db (-20°C ≤ T _a ≤ +70°C)	Volt-Free Contacts: U _i = 28V, I _i = 120mA, P _i = 1.3W, C _i = 0 & L _i = 0
KS-MH-IEC	Ex ia IIC T4 Gb (-20°C ≤ T _a ≤ +100°C) Ex ia IIC T6 Gb (-20°C ≤ T _a ≤ +70°C) Ex tb IIIC T135°C Db (-20°C ≤ T _a ≤ +100°C) Ex tb IIIC T85°C Db (-20°C ≤ T _a ≤ +70°C)	Volt-Free Contacts: U _i = 28V, I _i = 120mA, P _i = 1.3W, C _i = 0 & L _i = 0
KS-MR-IEC	Ex ia IIC T4 Gb (-20°C ≤ T _a ≤ +60°C) Ex tb IIIC T135°C Db (-20°C ≤ T _a ≤ +60°C)	Volt-Free Contacts & Resistors: U _i = 28V, I _i = 120mA, P _i = 1.2W, C _i = 0 & L _i = 0
KS-LM-IEC	Ex ia IIC T6 Gb (-50°C ≤ T _a ≤ +70°C) Ex tb IIIC T85°C Db (-50°C ≤ T _a ≤ +70°C)	Volt-Free Contacts: U _i = 28V, I _i = 120mA, P _i = 1.3W, C _i = 0 & L _i = 0
KS-LMH-IEC	Ex ia IIC T4 Gb (-50°C ≤ T _a ≤ +100°C) Ex ia IIC T6 Gb (-50°C ≤ T _a ≤ +70°C) Ex tb IIIC T135°C Db (-50°C ≤ T _a ≤ +100°C) Ex tb IIIC T85°C Db (-50°C ≤ T _a ≤ +70°C)	Volt-Free Contacts: U _i = 28V, I _i = 120mA, P _i = 1.3W, C _i = 0 & L _i = 0
KS-LMR-IEC	Ex ia IIC T4 Gb (-50°C ≤ T _a ≤ +60°C) Ex tb IIIC T135°C Db (-50°C ≤ T _a ≤ +60°C)	Volt-Free Contacts & Resistors: U _i = 28V, I _i = 120mA, P _i = 1.2W, C _i = 0 & L _i = 0
KS-P-IEC	Ex ia IIC T5 Gb (-25°C ≤ T _a ≤ +57°C) Ex ia IIC T6 Gb (-25°C ≤ T _a ≤ +42°C) Ex tb IIIC T100°C Db (-25°C ≤ T _a ≤ +57°C) Ex tb IIIC T85°C Db (-25°C ≤ T _a ≤ +42°C)	Each Sensor: U _i = 16V, I _i = 52mA, P _i = 0.169W, C _i = 100nF & L _i = 550µH
KS-PH-IEC	Ex ia IIC T5 Gb (-25°C ≤ T _a ≤ +87°C) Ex ia IIC T6 Gb (-25°C ≤ T _a ≤ +72°C) Ex tb IIIC T100°C Db (-25°C ≤ T _a ≤ +87°C) Ex tb IIIC T85°C Db (-25°C ≤ T _a ≤ +72°C)	Each Sensor: U _i = 16V, I _i = 25mA, P _i = 0.034W, C _i = 100nF & L _i = 550µH
KS-LP-IEC	Ex ia IIC T5 Gb (-40°C ≤ T _a ≤ +60°C) Ex ia IIC T6 Gb (-40°C ≤ T _a ≤ +45°C) Ex tb IIIC T100°C Db (-40°C ≤ T _a ≤ +60°C) Ex tb IIIC T85°C Db (-40°C ≤ T _a ≤ +45°C)	Each Sensor: U _i = 16V, I _i = 52mA, P _i = 0.169W, C _i = 120nF & L _i = 200µH
KS-LPH-IEC	Ex ia IIC T5 Gb (-40°C ≤ T _a ≤ +88°C) Ex ia IIC T6 Gb (-40°C ≤ T _a ≤ +73°C) Ex tb IIIC T100°C Db (-40°C ≤ T _a ≤ +88°C) Ex tb IIIC T85°C Db (-40°C ≤ T _a ≤ +73°C)	Each Sensor: U _i = 16V, I _i = 25mA, P _i = 0.034W, C _i = 120nF & L _i = 200µH
KS-LP-50-IEC	Ex ia IIC T5 Gb (-50°C ≤ T _a ≤ +60°C) Ex ia IIC T6 Gb (-50°C ≤ T _a ≤ +45°C) Ex tb IIIC T100°C Db (-50°C ≤ T _a ≤ +60°C) Ex tb IIIC T85°C Db (-50°C ≤ T _a ≤ +45°C)	Each Sensor: U _i = 16V, I _i = 52mA, P _i = 0.169W, C _i = 70nF & L _i = 150µH
KS-LPH-50-IEC	Ex ia IIC T5 Gb (-50°C ≤ T _a ≤ +88°C) Ex ia IIC T6 Gb (-50°C ≤ T _a ≤ +73°C) Ex tb IIIC T100°C Db (-50°C ≤ T _a ≤ +88°C) Ex tb IIIC T85°C Db (-50°C ≤ T _a ≤ +73°C)	Each Sensor: U _i = 16V, I _i = 25mA, P _i = 0.034W, C _i = 70nF & L _i = 150µH
KS-F-IEC	Ex ia IIC T6 Gb (-20°C ≤ T _a ≤ +70°C) Ex tb IIIC T85°C Db (-20°C ≤ T _a ≤ +70°C)	Each Sensor: U _i = 15V, I _i = 50mA, P _i = 0.12W, C _i = 145nF & L _i = 340µH
KS-LF-IEC	Ex ia IIC T6 Gb (-40°C ≤ T _a ≤ +60°C) Ex tb IIIC T85°C Db (-40°C ≤ T _a ≤ +60°C)	Each Sensor: U _i = 15V, I _i = 50mA, P _i = 0.12W, C _i = 150nF & L _i = 150µH
KS-T-IEC	Ex ia IIC T6 Gb (-20°C ≤ T _a ≤ +70°C) Ex tb IIIC T85°C Db (-20°C ≤ T _a ≤ +70°C)	Each Sensor: U _i = 20V, I _i = 60mA, P _i = 0.08W, C _i = 250nF & L _i = 350µH
KS-LT-IEC	Ex ia IIC T6 Gb (-40°C ≤ T _a ≤ +70°C) Ex tb IIIC T85°C Db (-40°C ≤ T _a ≤ +70°C)	Each Sensor: U _i = 20V, I _i = 20mA, P _i = 0.20W, C _i = 150nF & L _i = 150µH
KSR-T4-IEC	Ex ia IIC T4 Gb (-40°C ≤ T _a ≤ +70°C) Ex tb IIIC T135°C Db (-40°C ≤ T _a ≤ +70°C)	Potentiometer: U _i = 28V, P _i = 0.84W, C _i = 0 & L _i = 0
KSR-T6-IEC	Ex ia IIC T4 Gb (-40°C ≤ T _a ≤ +70°C) Ex ia IIC T5 Gb (-40°C ≤ T _a ≤ +55°C) Ex ia IIC T6 Gb (-40°C ≤ T _a ≤ +40°C) Ex tb IIIC T135°C Db (-40°C ≤ T _a ≤ +70°C) Ex tb IIIC T100°C Db (-40°C ≤ T _a ≤ +55°C) Ex tb IIIC T85°C Db (-40°C ≤ T _a ≤ +40°C)	Potentiometer: U _i = 28V, P _i = 0.19W, C _i = 0 & L _i = 0
KSR-LM-T4-IEC	Ex ia IIC T4 Gb (-50°C ≤ T _a ≤ +70°C) Ex tb IIIC T135°C Db (-50°C ≤ T _a ≤ +70°C)	Potentiometer: U _i = 28V, P _i = 0.84W, C _i = 0 & L _i = 0 Volt-Free Contacts: U _i = 28V, I _i = 120mA, P _i = 1.3W, C _i = 0 & L _i = 0

Model Number	Certification Code(s)	Input Parameters
KSR-LM-T6-IEC	Ex ia IIC T4 Gb (-50°C ≤ T _a ≤ +70°C) Ex ia IIC T5 Gb (-50°C ≤ T _a ≤ +55°C) Ex ia IIC T6 Gb (-50°C ≤ T _a ≤ +40°C) Ex tb IIIC T135°C Db (-50°C ≤ T _a ≤ +70°C) Ex tb IIIC T100°C Db (-50°C ≤ T _a ≤ +55°C) Ex tb IIIC T85°C Db (-50°C ≤ T _a ≤ +40°C)	Potentiometer: U _i = 28V, P _i = 0.19W, C _i = 0 & L _i = 0 Volt-Free Contacts: U _i = 28V, I _i = 120mA, P _i = 1.3W, C _i = 0 & L _i = 0
KSR-LMR-T4-IEC	Ex ia IIC T4 Gb (-50°C ≤ T _a ≤ +60°C) Ex tb IIIC T135°C Db (-50°C ≤ T _a ≤ +60°C)	Potentiometer: U _i = 28V, P _i = 0.84W, C _i = 0 & L _i = 0 Volt-Free Contacts & Resistors: U _i = 28V, I _i = 120mA, P _i = 1.2W, C _i = 0 & L _i = 0
KSR-P-T4-IEC	Ex ia IIC T4 Gb (-25°C ≤ T _a ≤ +70°C) Ex tb IIIC T135°C Db (-25°C ≤ T _a ≤ +70°C)	Potentiometer: U _i = 28V, P _i = 0.84W, C _i = 0 & L _i = 0 Each Sensor: U _i = 16V, I _i = 52mA, P _i = 0.169W, C _i = 100nF & L _i = 550µH
KSR-P-T6-IEC	Ex ia IIC T4 Gb (-25°C ≤ T _a ≤ +70°C) Ex ia IIC T5 Gb (-25°C ≤ T _a ≤ +55°C) Ex ia IIC T6 Gb (-25°C ≤ T _a ≤ +40°C) Ex tb IIIC T135°C Db (-25°C ≤ T _a ≤ +70°C) Ex tb IIIC T100°C Db (-25°C ≤ T _a ≤ +55°C) Ex tb IIIC T85°C Db (-25°C ≤ T _a ≤ +40°C)	Potentiometer: U _i = 28V, P _i = 0.19W, C _i = 0 & L _i = 0 Each Sensor: U _i = 16V, I _i = 52mA, P _i = 0.169W, C _i = 100nF & L _i = 550µH
KSR-LP-T4-IEC	Ex ia IIC T4 Gb (-40°C ≤ T _a ≤ +70°C) Ex tb IIIC T135°C Db (-40°C ≤ T _a ≤ +70°C)	Potentiometer: U _i = 28V, P _i = 0.84W, C _i = 0 & L _i = 0 Each Sensor: U _i = 16V, I _i = 52mA, P _i = 0.169W, C _i = 120nF & L _i = 200µH
KSR-LP-T6-IEC	Ex ia IIC T4 Gb (-40°C ≤ T _a ≤ +70°C) Ex ia IIC T5 Gb (-40°C ≤ T _a ≤ +55°C) Ex ia IIC T6 Gb (-40°C ≤ T _a ≤ +40°C) Ex tb IIIC T135°C Db (-40°C ≤ T _a ≤ +70°C) Ex tb IIIC T100°C Db (-40°C ≤ T _a ≤ +55°C) Ex tb IIIC T85°C Db (-40°C ≤ T _a ≤ +40°C)	Potentiometer: U _i = 28V, P _i = 0.19W, C _i = 0 & L _i = 0 Each Sensor: U _i = 16V, I _i = 52mA, P _i = 0.169W, C _i = 120nF & L _i = 200µH
KSR-LP-50-T4-IEC	Ex ia IIC T4 Gb (-50°C ≤ T _a ≤ +70°C) Ex tb IIIC T135°C Db (-50°C ≤ T _a ≤ +70°C)	Potentiometer: U _i = 28V, P _i = 0.84W, C _i = 0 & L _i = 0 Each Sensor: U _i = 16V, I _i = 52mA, P _i = 0.169W, C _i = 70nF & L _i = 150µH
KSR-LP-50-T6-IEC	Ex ia IIC T4 Gb (-50°C ≤ T _a ≤ +70°C) Ex ia IIC T5 Gb (-50°C ≤ T _a ≤ +55°C) Ex ia IIC T6 Gb (-50°C ≤ T _a ≤ +40°C) Ex tb IIIC T135°C Db (-50°C ≤ T _a ≤ +70°C) Ex tb IIIC T100°C Db (-50°C ≤ T _a ≤ +55°C) Ex tb IIIC T85°C Db (-50°C ≤ T _a ≤ +40°C)	Potentiometer: U _i = 28V, P _i = 0.19W, C _i = 0 & L _i = 0 Each Sensor: U _i = 16V, I _i = 52mA, P _i = 0.169W, C _i = 70nF & L _i = 150µH
KSR-T-T4-IEC	Ex ia IIC T4 Gb (-25°C ≤ T _a ≤ +70°C) Ex tb IIIC T135°C Db (-25°C ≤ T _a ≤ +70°C)	Potentiometer: U _i = 28V, P _i = 0.84W, C _i = 0 & L _i = 0 Each Sensor: U _i = 20V, I _i = 60mA, P _i = 0.08W, C _i = 250nF & L _i = 350µH
KSR-T-T6-IEC	Ex ia IIC T4 Gb (-25°C ≤ T _a ≤ +70°C) Ex ia IIC T5 Gb (-25°C ≤ T _a ≤ +55°C) Ex ia IIC T6 Gb (-25°C ≤ T _a ≤ +40°C) Ex tb IIIC T135°C Db (-25°C ≤ T _a ≤ +70°C) Ex tb IIIC T100°C Db (-25°C ≤ T _a ≤ +55°C) Ex tb IIIC T85°C Db (-25°C ≤ T _a ≤ +40°C)	Potentiometer: U _i = 28V, P _i = 0.19W, C _i = 0 & L _i = 0 Each Sensor: U _i = 20V, I _i = 60mA, P _i = 0.08W, C _i = 250nF & L _i = 350µH
KSR-F-T4-IEC	Ex ia IIC T4 Gb (-20°C ≤ T _a ≤ +70°C) Ex tb IIIC T135°C Db (-20°C ≤ T _a ≤ +70°C)	Potentiometer: U _i = 28V, P _i = 0.84W, C _i = 0 & L _i = 0 Each Sensor: U _i = 15V, I _i = 50mA, P _i = 0.12W, C _i = 145nF & L _i = 340µH
KSR-F-T6-IEC	Ex ia IIC T4 Gb (-20°C ≤ T _a ≤ +70°C) Ex ia IIC T5 Gb (-20°C ≤ T _a ≤ +55°C) Ex ia IIC T6 Gb (-20°C ≤ T _a ≤ +40°C) Ex tb IIIC T135°C Db (-20°C ≤ T _a ≤ +70°C) Ex tb IIIC T100°C Db (-20°C ≤ T _a ≤ +55°C) Ex tb IIIC T85°C Db (-20°C ≤ T _a ≤ +40°C)	Potentiometer: U _i = 28V, P _i = 0.19W, C _i = 0 & L _i = 0 Each Sensor: U _i = 15V, I _i = 50mA, P _i = 0.12W, C _i = 145nF & L _i = 340µH
KSR-LF-T4-IEC	Ex ia IIC T4 Gb (-40°C ≤ T _a ≤ +70°C) Ex tb IIIC T135°C Db (-40°C ≤ T _a ≤ +70°C)	Potentiometer: U _i = 28V, P _i = 0.84W, C _i = 0 & L _i = 0 Each Sensor: U _i = 15V, I _i = 50mA, P _i = 0.12W, C _i = 150nF & L _i = 150µH
KSR-LF-T6-IEC	Ex ia IIC T4 Gb (-40°C ≤ T _a ≤ +70°C) Ex ia IIC T6 Gb (-40°C ≤ T _a ≤ +40°C) Ex tb IIIC T135°C Db (-40°C ≤ T _a ≤ +70°C) Ex tb IIIC T85°C Db (-40°C ≤ T _a ≤ +40°C)	Potentiometer: U _i = 28V, P _i = 0.19W, C _i = 0 & L _i = 0 Each Sensor: U _i = 15V, I _i = 50mA, P _i = 0.12W, C _i = 150nF & L _i = 150µH

Model Number	Certification Code(s)	Input Parameters
KST-ET-IEC	Ex ia IIC T4 Gb (-40°C ≤ T _a ≤ +85°C) Ex ia IIC T5 Gb (-40°C ≤ T _a ≤ +70°C) Ex ia IIC T6 Gb (-40°C ≤ T _a ≤ +55°C) Ex tb IIIC T135°C Db (-40°C ≤ T _a ≤ +85°C) Ex tb IIIC T100°C Db (-40°C ≤ T _a ≤ +70°C) Ex tb IIIC T85°C Db (-40°C ≤ T _a ≤ +55°C)	Transmitter: U _i = 24V, I _i = 100mA, P _i = 0.75W, C _i = 5nF & L _i = 0
KST-AT-IEC	Ex ia IIC T4 Gb (-50°C ≤ T _a ≤ +85°C) Ex ia IIC T5 Gb (-50°C ≤ T _a ≤ +70°C) Ex ia IIC T6 Gb (-50°C ≤ T _a ≤ +56°C) Ex tb IIIC T135°C Db (-50°C ≤ T _a ≤ +85°C) Ex tb IIIC T100°C Db (-50°C ≤ T _a ≤ +70°C) Ex tb IIIC T85°C Db (-50°C ≤ T _a ≤ +56°C)	Transmitter: U _i = 30V, I _i = 130mA, P _i = 0.8W, C _i = 5nF & L _i = 0.5mH
KST-PT-IEC	Ex ia IIC T4 Gb (-40°C ≤ T _a ≤ +85°C) Ex ia IIC T6 Gb (-40°C ≤ T _a ≤ +45°C) Ex tb IIIC T135°C Db (-40°C ≤ T _a ≤ +85°C) Ex tb IIIC T85°C Db (-40°C ≤ T _a ≤ +45°C)	Transmitter: U _i = 30V, I _i = 120mA, P _i = 0.84W, C _i = 1nF & L _i = 10μH
KST-RT-IEC	Ex ia IIC T5 Gb (-60°C ≤ T _a ≤ +70°C) Ex ia IIC T6 Gb (-60°C ≤ T _a ≤ +60°C) Ex tb IIIC T100°C Db (-60°C ≤ T _a ≤ +70°C) Ex tb IIIC T85°C Db (-60°C ≤ T _a ≤ +60°C)	Transmitter: U _i = 30V, I _i = 130mA, P _i = 1.0W, C _i = 3.6nF & L _i = 0
KST-PF-IEC	Ex ia IIC T4 Gb (-40°C ≤ T _a ≤ +85°C) Ex ia IIC T6 Gb (-40°C ≤ T _a ≤ +60°C) Ex tb IIIC T135°C Db (-40°C ≤ T _a ≤ +85°C) Ex tb IIIC T85°C Db (-40°C ≤ T _a ≤ +60°C)	Transmitter: U _i = 30V, I _i = 120mA, P _i = 0.84W, C _i = 2nF & L _i = 1μH
KST-PL-IEC	Ex ib IIC T4 Gb (-40°C ≤ T _a ≤ +85°C) Ex ib IIC T6 Gb (-40°C ≤ T _a ≤ +60°C) Ex tb IIIC T135°C Db (-40°C ≤ T _a ≤ +85°C) Ex tb IIIC T85°C Db (-40°C ≤ T _a ≤ +60°C)	Transmitter: U _i = 17.5V, I _i = 380mA, P _i = 5.32W, C _i = 2nF & L _i = 1μH
KST-ET-LM-IEC	Ex ia IIC T4 Gb (-40°C ≤ T _a ≤ +85°C) Ex ia IIC T5 Gb (-40°C ≤ T _a ≤ +70°C) Ex ia IIC T6 Gb (-40°C ≤ T _a ≤ +55°C) Ex tb IIIC T135°C Db (-40°C ≤ T _a ≤ +85°C) Ex tb IIIC T100°C Db (-40°C ≤ T _a ≤ +70°C) Ex tb IIIC T85°C Db (-40°C ≤ T _a ≤ +55°C)	Transmitter: U _i = 24V, I _i = 100mA, P _i = 0.75W, C _i = 5nF & L _i = 0 Volt-Free Contacts: U _i = 28V, I _i = 120mA, P _i = 1.3W, C _i = 0 & L _i = 0
KST-AT-LM-IEC	Ex ia IIC T4 Gb (-50°C ≤ T _a ≤ +85°C) Ex ia IIC T5 Gb (-50°C ≤ T _a ≤ +70°C) Ex ia IIC T6 Gb (-50°C ≤ T _a ≤ +56°C) Ex tb IIIC T135°C Db (-50°C ≤ T _a ≤ +85°C) Ex tb IIIC T100°C Db (-50°C ≤ T _a ≤ +70°C) Ex tb IIIC T85°C Db (-50°C ≤ T _a ≤ +56°C)	Transmitter: U _i = 30V, I _i = 130mA, P _i = 0.8W, C _i = 5nF & L _i = 0.5mH Volt-Free Contacts: U _i = 28V, I _i = 120mA, P _i = 1.3W, C _i = 0 & L _i = 0
KST-PT-LM-IEC	Ex ia IIC T4 Gb (-40°C ≤ T _a ≤ +85°C) Ex ia IIC T6 Gb (-40°C ≤ T _a ≤ +45°C) Ex tb IIIC T135°C Db (-40°C ≤ T _a ≤ +85°C) Ex tb IIIC T85°C Db (-40°C ≤ T _a ≤ +45°C)	Transmitter: U _i = 30V, I _i = 120mA, P _i = 0.84W, C _i = 1nF & L _i = 10μH Volt-Free Contacts: U _i = 28V, I _i = 120mA, P _i = 1.3W, C _i = 0 & L _i = 0
KST-RT-LM-IEC	Ex ia IIC T5 Gb (-60°C ≤ T _a ≤ +70°C) Ex ia IIC T6 Gb (-60°C ≤ T _a ≤ +60°C) Ex tb IIIC T100°C Db (-60°C ≤ T _a ≤ +70°C) Ex tb IIIC T85°C Db (-60°C ≤ T _a ≤ +60°C)	Transmitter: U _i = 30V, I _i = 130mA, P _i = 1.0W, C _i = 3.6nF & L _i = 0 Volt-Free Contacts: U _i = 28V, I _i = 120mA, P _i = 1.3W, C _i = 0 & L _i = 0
KST-PF-LM-IEC	Ex ia IIC T4 Gb (-40°C ≤ T _a ≤ +85°C) Ex ia IIC T6 Gb (-40°C ≤ T _a ≤ +60°C) Ex tb IIIC T135°C Db (-40°C ≤ T _a ≤ +85°C) Ex tb IIIC T85°C Db (-40°C ≤ T _a ≤ +60°C)	Transmitter: U _i = 30V, I _i = 120mA, P _i = 0.84W, C _i = 2nF & L _i = 1μH Volt-Free Contacts: U _i = 28V, I _i = 120mA, P _i = 1.3W, C _i = 0 & L _i = 0
KST-PL-LM-IEC	Ex ib IIC T4 Gb (-40°C ≤ T _a ≤ +85°C) Ex ib IIC T6 Gb (-40°C ≤ T _a ≤ +60°C) Ex tb IIIC T135°C Db (-40°C ≤ T _a ≤ +85°C) Ex tb IIIC T85°C Db (-40°C ≤ T _a ≤ +60°C)	Transmitter: U _i = 17.5V, I _i = 380mA, P _i = 5.32W, C _i = 2nF & L _i = 1μH Volt-Free Contacts: U _i = 28V, I _i = 120mA, P _i = 1.3W, C _i = 0 & L _i = 0
KST-ET-LMR-IEC	Ex ia IIC T4 Gb (-40°C ≤ T _a ≤ +60°C) Ex tb IIIC T135°C Db (-40°C ≤ T _a ≤ +60°C)	Transmitter: U _i = 24V, I _i = 100mA, P _i = 0.75W, C _i = 5nF & L _i = 0 Volt-Free Contacts & Resistors: U _i = 28V, I _i = 120mA, P _i = 1.2W, C _i = 0 & L _i = 0
KST-AT-LMR-IEC	Ex ia IIC T4 Gb (-50°C ≤ T _a ≤ +60°C) Ex tb IIIC T135°C Db (-50°C ≤ T _a ≤ +60°C)	Transmitter: U _i = 30V, I _i = 130mA, P _i = 0.8W, C _i = 5nF & L _i = 0.5mH Volt-Free Contacts & Resistors: U _i = 28V, I _i = 120mA, P _i = 1.2W, C _i = 0 & L _i = 0

Model Number	Certification Code(s)	Input Parameters
KST-PT-LMR-IEC	Ex ia IIC T4 Gb (-40°C ≤ T _a ≤ +60°C) Ex tb IIIC T135°C Db (-40°C ≤ T _a ≤ +60°C)	Transmitter: U _i = 30V, I _i = 120mA, P _i = 0.84W, C _i = 1nF & L _i = 10μH Volt-Free Contacts & Resistors: U _i = 28V, I _i = 120mA, P _i = 1.2W, C _i = 0 & L _i = 0
KST-RT-LMR-IEC	Ex ia IIC T4 Gb (-60°C ≤ T _a ≤ +60°C) Ex tb IIIC T135°C Db (-60°C ≤ T _a ≤ +60°C)	Transmitter: U _i = 30V, I _i = 130mA, P _i = 1.0W, C _i = 3.6nF & L _i = 0 Volt-Free Contacts & Resistors: U _i = 28V, I _i = 120mA, P _i = 1.2W, C _i = 0 & L _i = 0
KST-PF-LMR-IEC	Ex ia IIC T4 Gb (-40°C ≤ T _a ≤ +60°C) Ex tb IIIC T135°C Db (-40°C ≤ T _a ≤ +60°C)	Transmitter: U _i = 30V, I _i = 120mA, P _i = 0.84W, C _i = 2nF & L _i = 1μH Volt-Free Contacts & Resistors: U _i = 28V, I _i = 120mA, P _i = 1.2W, C _i = 0 & L _i = 0
KST-PL-LMR-IEC	Ex ib IIC T4 Gb (-40°C ≤ T _a ≤ +60°C) Ex tb IIIC T135°C Db (-40°C ≤ T _a ≤ +60°C)	Transmitter: U _i = 17.5V, I _i = 380mA, P _i = 5.32W, C _i = 2nF & L _i = 1μH Volt-Free Contacts & Resistors: U _i = 28V, I _i = 120mA, P _i = 1.2W, C _i = 0 & L _i = 0
KST-ET-P-IEC	Ex ia IIC T4 Gb (-25°C ≤ T _a ≤ +67°C) Ex ia IIC T5 Gb (-25°C ≤ T _a ≤ +57°C) Ex ia IIC T6 Gb (-25°C ≤ T _a ≤ +42°C) Ex tb IIIC T135°C Db (-25°C ≤ T _a ≤ +67°C) Ex tb IIIC T100°C Db (-25°C ≤ T _a ≤ +57°C) Ex tb IIIC T85°C Db (-25°C ≤ T _a ≤ +42°C)	Transmitter: U _i = 24V, I _i = 100mA, P _i = 0.75W, C _i = 5nF & L _i = 0 Each Sensor: U _i = 16V, I _i = 52mA, P _i = 0.169W, C _i = 100nF & L _i = 550μH
KST-AT-P-IEC	Ex ia IIC T4 Gb (-25°C ≤ T _a ≤ +67°C) Ex ia IIC T5 Gb (-25°C ≤ T _a ≤ +57°C) Ex ia IIC T6 Gb (-25°C ≤ T _a ≤ +42°C) Ex tb IIIC T135°C Db (-25°C ≤ T _a ≤ +67°C) Ex tb IIIC T100°C Db (-25°C ≤ T _a ≤ +57°C) Ex tb IIIC T85°C Db (-25°C ≤ T _a ≤ +42°C)	Transmitter: U _i = 30V, I _i = 130mA, P _i = 0.8W, C _i = 5nF & L _i = 0.5mH Each Sensor: U _i = 16V, I _i = 52mA, P _i = 0.169W, C _i = 100nF & L _i = 550μH
KST-PT-P-IEC	Ex ia IIC T4 Gb (-25°C ≤ T _a ≤ +67°C) Ex ia IIC T6 Gb (-25°C ≤ T _a ≤ +42°C) Ex tb IIIC T135°C Db (-25°C ≤ T _a ≤ +67°C) Ex tb IIIC T85°C Db (-25°C ≤ T _a ≤ +42°C)	Transmitter: U _i = 30V, I _i = 120mA, P _i = 0.84W, C _i = 1nF & L _i = 10μH Each Sensor: U _i = 16V, I _i = 52mA, P _i = 0.169W, C _i = 100nF & L _i = 550μH
KST-RT-P-IEC	Ex ia IIC T5 Gb (-25°C ≤ T _a ≤ +57°C) Ex ia IIC T6 Gb (-25°C ≤ T _a ≤ +42°C) Ex tb IIIC T135°C Db (-25°C ≤ T _a ≤ +57°C) Ex tb IIIC T85°C Db (-25°C ≤ T _a ≤ +42°C)	Transmitter: U _i = 30V, I _i = 130mA, P _i = 1.0W, C _i = 3.6nF & L _i = 0 Each Sensor: U _i = 16V, I _i = 52mA, P _i = 0.169W, C _i = 100nF & L _i = 550μH
KST-PF-P-IEC	Ex ia IIC T4 Gb (-25°C ≤ T _a ≤ +67°C) Ex ia IIC T6 Gb (-25°C ≤ T _a ≤ +42°C) Ex tb IIIC T135°C Db (-25°C ≤ T _a ≤ +67°C) Ex tb IIIC T85°C Db (-25°C ≤ T _a ≤ +42°C)	Transmitter: U _i = 30V, I _i = 120mA, P _i = 0.84W, C _i = 2nF & L _i = 1μH Each Sensor: U _i = 16V, I _i = 52mA, P _i = 0.169W, C _i = 100nF & L _i = 550μH
KST-PL-P-IEC	Ex ib IIC T4 Gb (-25°C ≤ T _a ≤ +67°C) Ex ib IIC T6 Gb (-25°C ≤ T _a ≤ +42°C) Ex tb IIIC T135°C Db (-25°C ≤ T _a ≤ +67°C) Ex tb IIIC T85°C Db (-25°C ≤ T _a ≤ +42°C)	Transmitter: U _i = 17.5V, I _i = 380mA, P _i = 5.32W, C _i = 2nF & L _i = 1μH Each Sensor: U _i = 16V, I _i = 52mA, P _i = 0.169W, C _i = 100nF & L _i = 550μH
KST-ET-PH-IEC	Ex ia IIC T4 Gb (-25°C ≤ T _a ≤ +85°C) Ex ia IIC T5 Gb (-25°C ≤ T _a ≤ +70°C) Ex ia IIC T6 Gb (-25°C ≤ T _a ≤ +55°C) Ex tb IIIC T135°C Db (-25°C ≤ T _a ≤ +85°C) Ex tb IIIC T100°C Db (-25°C ≤ T _a ≤ +70°C) Ex tb IIIC T85°C Db (-25°C ≤ T _a ≤ +55°C)	Transmitter: U _i = 24V, I _i = 100mA, P _i = 0.75W, C _i = 5nF & L _i = 0 Each Sensor: U _i = 16V, I _i = 25mA, P _i = 0.034W, C _i = 100nF & L _i = 550μH
KST-AT-PH-IEC	Ex ia IIC T4 Gb (-25°C ≤ T _a ≤ +85°C) Ex ia IIC T5 Gb (-25°C ≤ T _a ≤ +70°C) Ex ia IIC T6 Gb (-25°C ≤ T _a ≤ +56°C) Ex tb IIIC T135°C Db (-25°C ≤ T _a ≤ +85°C) Ex tb IIIC T100°C Db (-25°C ≤ T _a ≤ +70°C) Ex tb IIIC T85°C Db (-25°C ≤ T _a ≤ +56°C)	Transmitter: U _i = 30V, I _i = 130mA, P _i = 0.8W, C _i = 5nF & L _i = 0.5mH Each Sensor: U _i = 16V, I _i = 25mA, P _i = 0.034W, C _i = 100nF & L _i = 550μH
KST-PT-PH-IEC	Ex ia IIC T4 Gb (-25°C ≤ T _a ≤ +85°C) Ex ia IIC T6 Gb (-25°C ≤ T _a ≤ +45°C) Ex tb IIIC T135°C Db (-25°C ≤ T _a ≤ +85°C) Ex tb IIIC T85°C Db (-25°C ≤ T _a ≤ +45°C)	Transmitter: U _i = 30V, I _i = 120mA, P _i = 0.84W, C _i = 1nF & L _i = 10μH Each Sensor: U _i = 16V, I _i = 25mA, P _i = 0.034W, C _i = 100nF & L _i = 550μH
KST-PF-PH-IEC	Ex ia IIC T4 Gb (-25°C ≤ T _a ≤ +85°C) Ex ia IIC T6 Gb (-25°C ≤ T _a ≤ +45°C) Ex tb IIIC T135°C Db (-25°C ≤ T _a ≤ +85°C) Ex tb IIIC T85°C Db (-25°C ≤ T _a ≤ +45°C)	Transmitter: U _i = 30V, I _i = 120mA, P _i = 0.84W, C _i = 1nF & L _i = 10μH Each Sensor: U _i = 16V, I _i = 25mA, P _i = 0.034W, C _i = 100nF & L _i = 550μH

Model Number	Certification Code(s)	Input Parameters
KST-PL-PH-IEC	Ex ib IIC T4 Gb (-25°C ≤ T _a ≤ +85°C) Ex ib IIC T6 Gb (-25°C ≤ T _a ≤ +45°C) Ex tb IIIC T135°C Db (-25°C ≤ T _a ≤ +85°C) Ex tb IIIC T85°C Db (-25°C ≤ T _a ≤ +45°C)	Transmitter: U _i = 17.5V, I _i = 380mA, P _i = 5.32W, C _i = 2nF & L _i = 1μH Each Sensor: U _i = 16V, I _i = 25mA, P _i = 0.034W, C _i = 100nF & L _i = 550μH
KST-ET-LP-IEC	Ex ia IIC T4 Gb (-40°C ≤ T _a ≤ +70°C) Ex ia IIC T5 Gb (-40°C ≤ T _a ≤ +60°C) Ex ia IIC T6 Gb (-40°C ≤ T _a ≤ +45°C) Ex tb IIIC T135°C Db (-40°C ≤ T _a ≤ +70°C) Ex tb IIIC T100°C Db (-40°C ≤ T _a ≤ +60°C) Ex tb IIIC T85°C Db (-40°C ≤ T _a ≤ +45°C)	Transmitter: U _i = 24V, I _i = 100mA, P _i = 0.75W, C _i = 5nF & L _i = 0 Each Sensor: U _i = 16V, I _i = 52mA, P _i = 0.169W, C _i = 120nF & L _i = 200μH
KST-AT-LP-IEC	Ex ia IIC T4 Gb (-40°C ≤ T _a ≤ +70°C) Ex ia IIC T5 Gb (-40°C ≤ T _a ≤ +60°C) Ex ia IIC T6 Gb (-40°C ≤ T _a ≤ +45°C) Ex tb IIIC T135°C Db (-40°C ≤ T _a ≤ +70°C) Ex tb IIIC T100°C Db (-40°C ≤ T _a ≤ +60°C) Ex tb IIIC T85°C Db (-40°C ≤ T _a ≤ +45°C)	Transmitter: U _i = 30V, I _i = 130mA, P _i = 0.8W, C _i = 5nF & L _i = 0.5mH Each Sensor: U _i = 16V, I _i = 52mA, P _i = 0.169W, C _i = 120nF & L _i = 200μH
KST-PT-LP-IEC	Ex ia IIC T4 Gb (-40°C ≤ T _a ≤ +70°C) Ex ia IIC T6 Gb (-40°C ≤ T _a ≤ +45°C) Ex tb IIIC T135°C Db (-40°C ≤ T _a ≤ +70°C) Ex tb IIIC T85°C Db (-40°C ≤ T _a ≤ +45°C)	Transmitter: U _i = 30V, I _i = 120mA, P _i = 0.84W, C _i = 1nF & L _i = 10μH Each Sensor: U _i = 16V, I _i = 52mA, P _i = 0.169W, C _i = 120nF & L _i = 200μH
KST-RT-LP-IEC	Ex ia IIC T4 Gb (-40°C ≤ T _a ≤ +70°C) Ex ia IIC T5 Gb (-40°C ≤ T _a ≤ +60°C) Ex ia IIC T6 Gb (-40°C ≤ T _a ≤ +45°C) Ex tb IIIC T135°C Db (-40°C ≤ T _a ≤ +70°C) Ex tb IIIC T100°C Db (-40°C ≤ T _a ≤ +60°C) Ex tb IIIC T85°C Db (-40°C ≤ T _a ≤ +45°C)	Transmitter: U _i = 30V, I _i = 130mA, P _i = 1.0W, C _i = 3.6nF & L _i = 0 Each Sensor: U _i = 16V, I _i = 52mA, P _i = 0.169W, C _i = 120nF & L _i = 200μH
KST-PF-LP-IEC	Ex ia IIC T4 Gb (-40°C ≤ T _a ≤ +70°C) Ex ia IIC T6 Gb (-40°C ≤ T _a ≤ +45°C) Ex tb IIIC T135°C Db (-40°C ≤ T _a ≤ +70°C) Ex tb IIIC T85°C Db (-40°C ≤ T _a ≤ +45°C)	Transmitter: U _i = 30V, I _i = 120mA, P _i = 0.84W, C _i = 2nF & L _i = 1μH Each Sensor: U _i = 16V, I _i = 52mA, P _i = 0.169W, C _i = 120nF & L _i = 200μH
KST-PL-LP-IEC	Ex ib IIC T4 Gb (-40°C ≤ T _a ≤ +70°C) Ex ib IIC T6 Gb (-40°C ≤ T _a ≤ +45°C) Ex tb IIIC T135°C Db (-40°C ≤ T _a ≤ +70°C) Ex tb IIIC T85°C Db (-40°C ≤ T _a ≤ +45°C)	Transmitter: U _i = 17.5V, I _i = 380mA, P _i = 5.32W, C _i = 2nF & L _i = 1μH Each Sensor: U _i = 16V, I _i = 52mA, P _i = 0.169W, C _i = 120nF & L _i = 200μH
KST-ET-LPH-IEC	Ex ia IIC T4 Gb (-40°C ≤ T _a ≤ +85°C) Ex ia IIC T5 Gb (-40°C ≤ T _a ≤ +70°C) Ex ia IIC T6 Gb (-40°C ≤ T _a ≤ +55°C) Ex tb IIIC T135°C Db (-40°C ≤ T _a ≤ +85°C) Ex tb IIIC T100°C Db (-40°C ≤ T _a ≤ +70°C) Ex tb IIIC T85°C Db (-40°C ≤ T _a ≤ +55°C)	Transmitter: U _i = 24V, I _i = 100mA, P _i = 0.75W, C _i = 5nF & L _i = 0 Each Sensor: U _i = 16V, I _i = 25mA, P _i = 0.034W, C _i = 120nF & L _i = 200μH
KST-AT-LPH-IEC	Ex ia IIC T4 Gb (-40°C ≤ T _a ≤ +85°C) Ex ia IIC T5 Gb (-40°C ≤ T _a ≤ +70°C) Ex ia IIC T6 Gb (-40°C ≤ T _a ≤ +56°C) Ex tb IIIC T135°C Db (-40°C ≤ T _a ≤ +85°C) Ex tb IIIC T100°C Db (-40°C ≤ T _a ≤ +70°C) Ex tb IIIC T85°C Db (-40°C ≤ T _a ≤ +56°C)	Transmitter: U _i = 30V, I _i = 130mA, P _i = 0.8W, C _i = 5nF & L _i = 0.5mH Each Sensor: U _i = 16V, I _i = 25mA, P _i = 0.034W, C _i = 120nF & L _i = 200μH
KST-PT-LPH-IEC	Ex ia IIC T4 Gb (-40°C ≤ T _a ≤ +85°C) Ex ia IIC T6 Gb (-40°C ≤ T _a ≤ +45°C) Ex tb IIIC T135°C Db (-40°C ≤ T _a ≤ +85°C) Ex tb IIIC T85°C Db (-40°C ≤ T _a ≤ +45°C)	Transmitter: U _i = 30V, I _i = 120mA, P _i = 0.84W, C _i = 1nF & L _i = 10μH Each Sensor: U _i = 16V, I _i = 25mA, P _i = 0.034W, C _i = 120nF & L _i = 200μH
KST-PF-LPH-IEC	Ex ia IIC T4 Gb (-40°C ≤ T _a ≤ +85°C) Ex ia IIC T6 Gb (-40°C ≤ T _a ≤ +60°C) Ex tb IIIC T135°C Db (-40°C ≤ T _a ≤ +85°C) Ex tb IIIC T85°C Db (-40°C ≤ T _a ≤ +60°C)	Transmitter: U _i = 30V, I _i = 120mA, P _i = 0.84W, C _i = 2nF & L _i = 1μH Each Sensor: U _i = 16V, I _i = 25mA, P _i = 0.034W, C _i = 120nF & L _i = 200μH
KST-PL-LPH-IEC	Ex ib IIC T4 Gb (-40°C ≤ T _a ≤ +85°C) Ex ib IIC T6 Gb (-40°C ≤ T _a ≤ +60°C) Ex tb IIIC T135°C Db (-40°C ≤ T _a ≤ +85°C) Ex tb IIIC T85°C Db (-40°C ≤ T _a ≤ +60°C)	Transmitter: U _i = 17.5V, I _i = 380mA, P _i = 5.32W, C _i = 2nF & L _i = 1μH Each Sensor: U _i = 16V, I _i = 25mA, P _i = 0.034W, C _i = 120nF & L _i = 200μH
KST-AT-LP-50-IEC	Ex ia IIC T4 Gb (-50°C ≤ T _a ≤ +70°C) Ex ia IIC T5 Gb (-50°C ≤ T _a ≤ +60°C) Ex ia IIC T6 Gb (-50°C ≤ T _a ≤ +45°C) Ex tb IIIC T135°C Db (-50°C ≤ T _a ≤ +70°C) Ex tb IIIC T100°C Db (-50°C ≤ T _a ≤ +60°C) Ex tb IIIC T85°C Db (-50°C ≤ T _a ≤ +45°C)	Transmitter: U _i = 30V, I _i = 130mA, P _i = 0.8W, C _i = 5nF & L _i = 0.5mH Each Sensor: U _i = 16V, I _i = 52mA, P _i = 0.169W, C _i = 70nF & L _i = 150μH

Model Number	Certification Code(s)	Input Parameters
KST-RT-LP-50-IEC	Ex ia IIC T4 Gb (-50°C ≤ T _a ≤ +70°C) Ex ia IIC T5 Gb (-50°C ≤ T _a ≤ +60°C) Ex ia IIC T6 Gb (-50°C ≤ T _a ≤ +45°C) Ex tb IIIC T135°C Db (-50°C ≤ T _a ≤ +70°C) Ex tb IIIC T100°C Db (-50°C ≤ T _a ≤ +60°C) Ex tb IIIC T85°C Db (-50°C ≤ T _a ≤ +45°C)	Transmitter: U _i = 30V, I _i = 130mA, P _i = 1.0W, C _i = 3.6nF & L _i = 0 Each Sensor: U _i = 16V, I _i = 52mA, P _i = 0.169W, C _i = 70nF & L _i = 150μH
KST-AT-LPH-50-IEC	Ex ia IIC T4 Gb (-50°C ≤ T _a ≤ +85°C) Ex ia IIC T5 Gb (-50°C ≤ T _a ≤ +70°C) Ex ia IIC T6 Gb (-50°C ≤ T _a ≤ +56°C) Ex tb IIIC T135°C Db (-50°C ≤ T _a ≤ +85°C) Ex tb IIIC T100°C Db (-50°C ≤ T _a ≤ +70°C) Ex tb IIIC T85°C Db (-50°C ≤ T _a ≤ +56°C)	Transmitter: U _i = 30V, I _i = 130mA, P _i = 0.8W, C _i = 5nF & L _i = 0.5mH Each Sensor: U _i = 16V, I _i = 25mA, P _i = 0.034W, C _i = 70nF & L _i = 150μH
KST-ET-F-IEC	Ex ia IIC T5 Gb (-20°C ≤ T _a ≤ +70°C) Ex ia IIC T6 Gb (-20°C ≤ T _a ≤ +55°C) Ex tb IIIC T100°C Db (-20°C ≤ T _a ≤ +70°C) Ex tb IIIC T85°C Db (-20°C ≤ T _a ≤ +55°C)	Transmitter: U _i = 24V, I _i = 100mA, P _i = 0.75W, C _i = 5nF & L _i = 0 Each Sensor: U _i = 15V, I _i = 50mA, P _i = 0.12W, C _i = 145nF & L _i = 340μH
KST-AT-F-IEC	Ex ia IIC T5 Gb (-20°C ≤ T _a ≤ +70°C) Ex ia IIC T6 Gb (-20°C ≤ T _a ≤ +56°C) Ex tb IIIC T100°C Db (-20°C ≤ T _a ≤ +70°C) Ex tb IIIC T85°C Db (-20°C ≤ T _a ≤ +56°C)	Transmitter: U _i = 30V, I _i = 130mA, P _i = 0.8W, C _i = 5nF & L _i = 0.5mH Each Sensor: U _i = 15V, I _i = 50mA, P _i = 0.12W, C _i = 145nF & L _i = 340μH
KST-PT-F-IEC	Ex ia IIC T4 Gb (-20°C ≤ T _a ≤ +70°C) Ex ia IIC T6 Gb (-20°C ≤ T _a ≤ +45°C) Ex tb IIIC T135°C Db (-20°C ≤ T _a ≤ +70°C) Ex tb IIIC T85°C Db (-20°C ≤ T _a ≤ +45°C)	Transmitter: U _i = 30V, I _i = 120mA, P _i = 0.84W, C _i = 1nF & L _i = 10μH Each Sensor: U _i = 15V, I _i = 50mA, P _i = 0.12W, C _i = 145nF & L _i = 340μH
KST-RT-F-IEC	Ex ia IIC T5 Gb (-20°C ≤ T _a ≤ +70°C) Ex ia IIC T6 Gb (-20°C ≤ T _a ≤ +60°C) Ex tb IIIC T100°C Db (-20°C ≤ T _a ≤ +70°C) Ex tb IIIC T85°C Db (-20°C ≤ T _a ≤ +60°C)	Transmitter: U _i = 30V, I _i = 130mA, P _i = 1.0W, C _i = 3.6nF & L _i = 0 Each Sensor: U _i = 15V, I _i = 50mA, P _i = 0.12W, C _i = 145nF & L _i = 340μH
KST-PF-F-IEC	Ex ia IIC T4 Gb (-20°C ≤ T _a ≤ +70°C) Ex ia IIC T6 Gb (-20°C ≤ T _a ≤ +60°C) Ex tb IIIC T135°C Db (-20°C ≤ T _a ≤ +70°C) Ex tb IIIC T85°C Db (-20°C ≤ T _a ≤ +60°C)	Transmitter: U _i = 30V, I _i = 120mA, P _i = 0.84W, C _i = 2nF & L _i = 1μH Each Sensor: U _i = 15V, I _i = 50mA, P _i = 0.12W, C _i = 145nF & L _i = 340μH
KST-PL-F-IEC	Ex ib IIC T4 Gb (-20°C ≤ T _a ≤ +70°C) Ex ib IIC T6 Gb (-20°C ≤ T _a ≤ +60°C) Ex tb IIIC T135°C Db (-20°C ≤ T _a ≤ +70°C) Ex tb IIIC T85°C Db (-20°C ≤ T _a ≤ +60°C)	Transmitter: U _i = 17.5V, I _i = 380mA, P _i = 5.32W, C _i = 2nF & L _i = 1μH Each Sensor: U _i = 15V, I _i = 50mA, P _i = 0.12W, C _i = 145nF & L _i = 340μH
KST-ET-LF-IEC	Ex ia IIC T4 Gb (-40°C ≤ T _a ≤ +70°C) Ex ia IIC T6 Gb (-40°C ≤ T _a ≤ +55°C) Ex tb IIIC T135°C Db (-40°C ≤ T _a ≤ +70°C) Ex tb IIIC T85°C Db (-40°C ≤ T _a ≤ +55°C)	Transmitter: U _i = 24V, I _i = 100mA, P _i = 0.75W, C _i = 5nF & L _i = 0 Each Sensor: U _i = 15V, I _i = 50mA, P _i = 0.12W, C _i = 150nF & L _i = 150μH
KST-AT-LF-IEC	Ex ia IIC T4 Gb (-40°C ≤ T _a ≤ +70°C) Ex ia IIC T6 Gb (-40°C ≤ T _a ≤ +56°C) Ex tb IIIC T135°C Db (-40°C ≤ T _a ≤ +70°C) Ex tb IIIC T85°C Db (-40°C ≤ T _a ≤ +56°C)	Transmitter: U _i = 30V, I _i = 130mA, P _i = 0.8W, C _i = 5nF & L _i = 0.5mH Each Sensor: U _i = 15V, I _i = 50mA, P _i = 0.12W, C _i = 150nF & L _i = 150μH
KST-PT-LF-IEC	Ex ia IIC T4 Gb (-40°C ≤ T _a ≤ +70°C) Ex ia IIC T6 Gb (-40°C ≤ T _a ≤ +45°C) Ex tb IIIC T135°C Db (-40°C ≤ T _a ≤ +70°C) Ex tb IIIC T85°C Db (-40°C ≤ T _a ≤ +45°C)	Transmitter: U _i = 30V, I _i = 120mA, P _i = 0.84W, C _i = 1nF & L _i = 10μH Each Sensor: U _i = 15V, I _i = 50mA, P _i = 0.12W, C _i = 150nF & L _i = 150μH
KST-RT-LF-IEC	Ex ia IIC T4 Gb (-40°C ≤ T _a ≤ +70°C) Ex ia IIC T6 Gb (-40°C ≤ T _a ≤ +60°C) Ex tb IIIC T135°C Db (-40°C ≤ T _a ≤ +70°C) Ex tb IIIC T85°C Db (-40°C ≤ T _a ≤ +60°C)	Transmitter: U _i = 30V, I _i = 130mA, P _i = 1.0W, C _i = 3.6nF & L _i = 0 Each Sensor: U _i = 15V, I _i = 50mA, P _i = 0.12W, C _i = 150nF & L _i = 150μH
KST-PF-LF-IEC	Ex ia IIC T4 Gb (-40°C ≤ T _a ≤ +70°C) Ex ia IIC T6 Gb (-40°C ≤ T _a ≤ +60°C) Ex tb IIIC T135°C Db (-40°C ≤ T _a ≤ +70°C) Ex tb IIIC T85°C Db (-40°C ≤ T _a ≤ +60°C)	Transmitter: U _i = 30V, I _i = 120mA, P _i = 0.84W, C _i = 2nF & L _i = 1μH Each Sensor: U _i = 15V, I _i = 50mA, P _i = 0.12W, C _i = 150nF & L _i = 150μH
KST-PL-LF-IEC	Ex ib IIC T4 Gb (-40°C ≤ T _a ≤ +70°C) Ex ib IIC T6 Gb (-40°C ≤ T _a ≤ +60°C) Ex tb IIIC T135°C Db (-40°C ≤ T _a ≤ +70°C) Ex tb IIIC T85°C Db (-40°C ≤ T _a ≤ +60°C)	Transmitter: U _i = 17.5V, I _i = 380mA, P _i = 5.32W, C _i = 2nF & L _i = 1μH Each Sensor: U _i = 15V, I _i = 50mA, P _i = 0.12W, C _i = 150nF & L _i = 150μH
KST-ET-T-IEC	Ex ia IIC T5 Gb (-20°C ≤ T _a ≤ +70°C) Ex ia IIC T6 Gb (-20°C ≤ T _a ≤ +55°C) Ex tb IIIC T100°C Db (-20°C ≤ T _a ≤ +70°C) Ex tb IIIC T85°C Db (-20°C ≤ T _a ≤ +55°C)	Transmitter: U _i = 24V, I _i = 100mA, P _i = 0.75W, C _i = 5nF & L _i = 0 Each Sensor: U _i = 20V, I _i = 60mA, P _i = 0.08W, C _i = 250nF & L _i = 350μH

Model Number	Certification Code(s)	Input Parameters
KST-AT-T-IEC	Ex ia IIC T5 Gb (-20°C ≤ T _a ≤ +70°C) Ex ia IIC T6 Gb (-20°C ≤ T _a ≤ +56°C) Ex tb IIIC T100°C Db (-20°C ≤ T _a ≤ +70°C) Ex tb IIIC T85°C Db (-20°C ≤ T _a ≤ +56°C)	Transmitter: U _i = 30V, I _i = 130mA, P _i = 0.8W, C _i = 5nF & L _i = 0.5mH Each Sensor: U _i = 20V, I _i = 60mA, P _i = 0.08W, C _i = 250nF & L _i = 350μH
KST-PT-T-IEC	Ex ia IIC T4 Gb (-20°C ≤ T _a ≤ +70°C) Ex ia IIC T6 Gb (-20°C ≤ T _a ≤ +45°C) Ex tb IIIC T135°C Db (-20°C ≤ T _a ≤ +70°C) Ex tb IIIC T85°C Db (-20°C ≤ T _a ≤ +45°C)	Transmitter: U _i = 30V, I _i = 120mA, P _i = 0.84W, C _i = 1nF & L _i = 10μH Each Sensor: U _i = 20V, I _i = 60mA, P _i = 0.08W, C _i = 250nF & L _i = 350μH
KST-RT-T-IEC	Ex ia IIC T5 Gb (-20°C ≤ T _a ≤ +70°C) Ex ia IIC T6 Gb (-20°C ≤ T _a ≤ +60°C) Ex tb IIIC T100°C Db (-20°C ≤ T _a ≤ +70°C) Ex tb IIIC T85°C Db (-20°C ≤ T _a ≤ +60°C)	Transmitter: U _i = 30V, I _i = 130mA, P _i = 1.0W, C _i = 3.6nF & L _i = 0 Each Sensor: U _i = 20V, I _i = 60mA, P _i = 0.08W, C _i = 250nF & L _i = 350μH
KST-PF-T-IEC	Ex ia IIC T4 Gb (-20°C ≤ T _a ≤ +70°C) Ex ia IIC T6 Gb (-20°C ≤ T _a ≤ +60°C) Ex tb IIIC T135°C Db (-20°C ≤ T _a ≤ +70°C) Ex tb IIIC T85°C Db (-20°C ≤ T _a ≤ +60°C)	Transmitter: U _i = 30V, I _i = 120mA, P _i = 0.84W, C _i = 2nF & L _i = 1μH Each Sensor: U _i = 20V, I _i = 60mA, P _i = 0.08W, C _i = 250nF & L _i = 350μH
KST-PL-T-IEC	Ex ib IIC T4 Gb (-20°C ≤ T _a ≤ +70°C) Ex ib IIC T6 Gb (-20°C ≤ T _a ≤ +60°C) Ex tb IIIC T135°C Db (-20°C ≤ T _a ≤ +70°C) Ex tb IIIC T85°C Db (-20°C ≤ T _a ≤ +60°C)	Transmitter: U _i = 17.5V, I _i = 380mA, P _i = 5.32W, C _i = 2nF & L _i = 1μH Each Sensor: U _i = 20V, I _i = 60mA, P _i = 0.08W, C _i = 250nF & L _i = 350μH
KST-ET-LT-IEC	Ex ia IIC T5 Gb (-40°C ≤ T _a ≤ +70°C) Ex ia IIC T6 Gb (-40°C ≤ T _a ≤ +55°C) Ex tb IIIC T100°C Db (-40°C ≤ T _a ≤ +70°C) Ex tb IIIC T85°C Db (-40°C ≤ T _a ≤ +55°C)	Transmitter: U _i = 24V, I _i = 100mA, P _i = 0.75W, C _i = 5nF & L _i = 0 Each Sensor: U _i = 20V, I _i = 20mA, P _i = 0.2W, C _i = 150nF & L _i = 150μH
KST-AT-LT-IEC	Ex ia IIC T5 Gb (-40°C ≤ T _a ≤ +70°C) Ex ia IIC T6 Gb (-40°C ≤ T _a ≤ +56°C) Ex tb IIIC T100°C Db (-40°C ≤ T _a ≤ +70°C) Ex tb IIIC T85°C Db (-40°C ≤ T _a ≤ +56°C)	Transmitter: U _i = 30V, I _i = 130mA, P _i = 0.8W, C _i = 5nF & L _i = 0.5mH Each Sensor: U _i = 20V, I _i = 20mA, P _i = 0.2W, C _i = 150nF & L _i = 150μH
KST-PT-LT-IEC	Ex ia IIC T4 Gb (-40°C ≤ T _a ≤ +70°C) Ex ia IIC T6 Gb (-40°C ≤ T _a ≤ +45°C) Ex tb IIIC T135°C Db (-40°C ≤ T _a ≤ +70°C) Ex tb IIIC T85°C Db (-40°C ≤ T _a ≤ +45°C)	Transmitter: U _i = 30V, I _i = 120mA, P _i = 0.84W, C _i = 1nF & L _i = 10μH Each Sensor: U _i = 20V, I _i = 20mA, P _i = 0.2W, C _i = 150nF & L _i = 150μH
KST-RT-LT-IEC	Ex ia IIC T5 Gb (-40°C ≤ T _a ≤ +70°C) Ex ia IIC T6 Gb (-40°C ≤ T _a ≤ +60°C) Ex tb IIIC T100°C Db (-40°C ≤ T _a ≤ +70°C) Ex tb IIIC T85°C Db (-40°C ≤ T _a ≤ +60°C)	Transmitter: U _i = 30V, I _i = 130mA, P _i = 1.0W, C _i = 3.6nF & L _i = 0 Each Sensor: U _i = 20V, I _i = 20mA, P _i = 0.2W, C _i = 150nF & L _i = 150μH
KST-PF-LT-IEC	Ex ia IIC T4 Gb (-40°C ≤ T _a ≤ +70°C) Ex ia IIC T6 Gb (-40°C ≤ T _a ≤ +60°C) Ex tb IIIC T135°C Db (-40°C ≤ T _a ≤ +70°C) Ex tb IIIC T85°C Db (-40°C ≤ T _a ≤ +60°C)	Transmitter: U _i = 30V, I _i = 130mA, P _i = 1.0W, C _i = 3.6nF & L _i = 0 Each Sensor: U _i = 20V, I _i = 20mA, P _i = 0.2W, C _i = 150nF & L _i = 150μH
KST-PL-LT-IEC	Ex ib IIC T4 Gb (-40°C ≤ T _a ≤ +70°C) Ex ib IIC T6 Gb (-40°C ≤ T _a ≤ +60°C) Ex tb IIIC T135°C Db (-40°C ≤ T _a ≤ +70°C) Ex tb IIIC T85°C Db (-40°C ≤ T _a ≤ +60°C)	Transmitter: U _i = 17.5V, I _i = 380mA, P _i = 5.32W, C _i = 2nF & L _i = 1μH Each Sensor: U _i = 20V, I _i = 20mA, P _i = 0.2W, C _i = 150nF & L _i = 150μH

Table 2: Gas only certified ‘-SC’ Model Certification Codes & Input Parameters

Model Number	Certification Code(s)	Input Parameters
KS-M-SC-IEC	Ex ia IIC T6 Gb (-20°C ≤ T _a ≤ +60°C)	Volt-Free Contacts: U _i = 28V, I _i = 120mA, P _i = 1.3W, C _i = 0 & L _i = 0
KS-MR-SC-IEC	Ex ia IIC T4 Gb (-20°C ≤ T _a ≤ +60°C)	Volt-Free Contacts & Resistors: U _i = 28V, I _i = 120mA, P _i = 1.2W, C _i = 0 & L _i = 0
KS-LM-SC-IEC	Ex ia IIC T6 Gb (-40°C ≤ T _a ≤ +60°C)	Volt-Free Contacts: U _i = 28V, I _i = 120mA, P _i = 1.3W, C _i = 0 & L _i = 0
KS-LMR-SC-IEC	Ex ia IIC T4 Gb (-40°C ≤ T _a ≤ +60°C)	Volt-Free Contacts & Resistors: U _i = 28V, I _i = 120mA, P _i = 1.2W, C _i = 0 & L _i = 0
KS-P-SC-IEC	Ex ia IIC T5 Gb (-25°C ≤ T _a ≤ +57°C) Ex ia IIC T6 Gb (-25°C ≤ T _a ≤ +42°C)	Each Sensor: U _i = 16V, I _i = 52mA, P _i = 0.169W, C _i = 100nF & L _i = 550µH
KS-PH-SC-IEC	Ex ia IIC T6 Gb (-25°C ≤ T _a ≤ +60°C)	Each Sensor: U _i = 16V, I _i = 25mA, P _i = 0.034W, C _i = 100nF & L _i = 550µH
KS-LP-SC-IEC	Ex ia IIC T5 Gb (-40°C ≤ T _a ≤ +60°C) Ex ia IIC T6 Gb (-40°C ≤ T _a ≤ +45°C)	Each Sensor: U _i = 16V, I _i = 52mA, P _i = 0.169W, C _i = 120nF & L _i = 200µH
KS-LPH-SC-IEC	Ex ia IIC T6 Gb (-40°C ≤ T _a ≤ +60°C)	Each Sensor: U _i = 16V, I _i = 25mA, P _i = 0.034W, C _i = 120nF & L _i = 200µH
KS-LP-50-SC-IEC	Ex ia IIC T5 Gb (-40°C ≤ T _a ≤ +60°C) Ex ia IIC T6 Gb (-40°C ≤ T _a ≤ +45°C)	Each Sensor: U _i = 16V, I _i = 52mA, P _i = 0.169W, C _i = 70nF & L _i = 150µH
KS-LPH-50-SC-IEC	Ex ia IIC T6 Gb (-40°C ≤ T _a ≤ +60°C)	Each Sensor: U _i = 16V, I _i = 25mA, P _i = 0.034W, C _i = 70nF & L _i = 150µH
KS-F-SC-IEC	Ex ia IIC T6 Gb (-20°C ≤ T _a ≤ +60°C)	Each Sensor: U _i = 15V, I _i = 50mA, P _i = 0.12W, C _i = 145nF & L _i = 340µH
KS-LF-SC-IEC	Ex ia IIC T6 Gb (-40°C ≤ T _a ≤ +60°C)	Each Sensor: U _i = 15V, I _i = 50mA, P _i = 0.12W, C _i = 150nF & L _i = 150µH
KS-T-SC-IEC	Ex ia IIC T6 Gb (-20°C ≤ T _a ≤ +60°C)	Each Sensor: U _i = 20V, I _i = 60mA, P _i = 0.08W, C _i = 250nF & L _i = 350µH
KS-LT-SC-IEC	Ex ia IIC T6 Gb (-40°C ≤ T _a ≤ +60°C)	Each Sensor: U _i = 20V, I _i = 20mA, P _i = 0.20W, C _i = 150nF & L _i = 150µH
KSR-T4-SC-IEC	Ex ia IIC T4 Gb (-40°C ≤ T _a ≤ +60°C)	Potentiometer: U _i = 28V, P _i = 0.84W, C _i = 0 & L _i = 0
KSR-T6-SC-IEC	Ex ia IIC T4 Gb (-40°C ≤ T _a ≤ +60°C) Ex ia IIC T5 Gb (-40°C ≤ T _a ≤ +55°C) Ex ia IIC T6 Gb (-40°C ≤ T _a ≤ +40°C)	Potentiometer: U _i = 28V, P _i = 0.19W, C _i = 0 & L _i = 0
KSR-LM-T4-SC-IEC	Ex ia IIC T4 Gb (-40°C ≤ T _a ≤ +60°C)	Potentiometer: U _i = 28V, P _i = 0.84W, C _i = 0 & L _i = 0 Volt-Free Contacts: U _i = 28V, I _i = 120mA, P _i = 1.3W, C _i = 0 & L _i = 0
KSR-LM-T6-SC-IEC	Ex ia IIC T4 Gb (-40°C ≤ T _a ≤ +60°C) Ex ia IIC T5 Gb (-40°C ≤ T _a ≤ +55°C) Ex ia IIC T6 Gb (-40°C ≤ T _a ≤ +40°C)	Potentiometer: U _i = 28V, P _i = 0.19W, C _i = 0 & L _i = 0 Volt-Free Contacts: U _i = 28V, I _i = 120mA, P _i = 1.3W, C _i = 0 & L _i = 0
KSR-LMR-T4-SC-IEC	Ex ia IIC T4 Gb (-40°C ≤ T _a ≤ +60°C)	Potentiometer: U _i = 28V, P _i = 0.84W, C _i = 0 & L _i = 0 Volt-Free Contacts & Resistors: U _i = 28V, I _i = 120mA, P _i = 1.2W, C _i = 0 & L _i = 0
KSR-P-T4-SC-IEC	Ex ia IIC T4 Gb (-25°C ≤ T _a ≤ +60°C)	Potentiometer: U _i = 28V, P _i = 0.84W, C _i = 0 & L _i = 0 Each Sensor: U _i = 16V, I _i = 52mA, P _i = 0.169W, C _i = 100nF & L _i = 550µH
KSR-P-T6-SC-IEC	Ex ia IIC T4 Gb (-25°C ≤ T _a ≤ +60°C) Ex ia IIC T5 Gb (-25°C ≤ T _a ≤ +55°C) Ex ia IIC T6 Gb (-25°C ≤ T _a ≤ +40°C)	Potentiometer: U _i = 28V, P _i = 0.19W, C _i = 0 & L _i = 0 Each Sensor: U _i = 16V, I _i = 52mA, P _i = 0.169W, C _i = 100nF & L _i = 550µH
KSR-LP-T4-SC-IEC	Ex ia IIC T4 Gb (-40°C ≤ T _a ≤ +60°C)	Potentiometer: U _i = 28V, P _i = 0.84W, C _i = 0 & L _i = 0 Each Sensor: U _i = 16V, I _i = 52mA, P _i = 0.169W, C _i = 120nF & L _i = 200µH
KSR-LP-T6-SC-IEC	Ex ia IIC T4 Gb (-40°C ≤ T _a ≤ +60°C) Ex ia IIC T5 Gb (-40°C ≤ T _a ≤ +55°C) Ex ia IIC T6 Gb (-40°C ≤ T _a ≤ +40°C)	Potentiometer: U _i = 28V, P _i = 0.19W, C _i = 0 & L _i = 0 Each Sensor: U _i = 16V, I _i = 52mA, P _i = 0.169W, C _i = 120nF & L _i = 200µH
KSR-LP-50-T4-SC-IEC	Ex ia IIC T4 Gb (-40°C ≤ T _a ≤ +60°C)	Potentiometer: U _i = 28V, P _i = 0.84W, C _i = 0 & L _i = 0 Each Sensor: U _i = 16V, I _i = 52mA, P _i = 0.169W, C _i = 70nF & L _i = 150µH
KSR-LP-50-T6-SC-IEC	Ex ia IIC T4 Gb (-40°C ≤ T _a ≤ +60°C) Ex ia IIC T5 Gb (-40°C ≤ T _a ≤ +55°C) Ex ia IIC T6 Gb (-40°C ≤ T _a ≤ +40°C)	Potentiometer: U _i = 28V, P _i = 0.19W, C _i = 0 & L _i = 0 Each Sensor: U _i = 16V, I _i = 52mA, P _i = 0.169W, C _i = 70nF & L _i = 150µH
KSR-T-T4-SC-IEC	Ex ia IIC T4 Gb (-25°C ≤ T _a ≤ +60°C)	Potentiometer: U _i = 28V, P _i = 0.84W, C _i = 0 & L _i = 0 Each Sensor: U _i = 20V, I _i = 60mA, P _i = 0.08W, C _i = 250nF & L _i = 350µH

Model Number	Certification Code(s)	Input Parameters
KSR-T-T6-SC-IEC	Ex ia IIC T4 Gb (-25°C ≤ T _a ≤ +60°C) Ex ia IIC T5 Gb (-25°C ≤ T _a ≤ +55°C) Ex ia IIC T6 Gb (-25°C ≤ T _a ≤ +40°C)	Potentiometer: U _i = 28V, P _i = 0.19W, C _i = 0 & L _i = 0 Each Sensor: U _i = 20V, I _i = 60mA, P _i = 0.08W, C _i = 250nF & L _i = 350μH
KSR-F-T4-SC-IEC	Ex ia IIC T4 Gb (-20°C ≤ T _a ≤ +60°C)	Potentiometer: U _i = 28V, P _i = 0.84W, C _i = 0 & L _i = 0 Each Sensor: U _i = 15V, I _i = 50mA, P _i = 0.12W, C _i = 145nF & L _i = 340μH
KSR-F-T6-SC-IEC	Ex ia IIC T4 Gb (-20°C ≤ T _a ≤ +60°C) Ex ia IIC T5 Gb (-20°C ≤ T _a ≤ +55°C) Ex ia IIC T6 Gb (-20°C ≤ T _a ≤ +40°C)	Potentiometer: U _i = 28V, P _i = 0.19W, C _i = 0 & L _i = 0 Each Sensor: U _i = 15V, I _i = 50mA, P _i = 0.12W, C _i = 145nF & L _i = 340μH
KSR-LF-T4-SC-IEC	Ex ia IIC T4 Gb (-40°C ≤ T _a ≤ +60°C)	Potentiometer: U _i = 28V, P _i = 0.84W, C _i = 0 & L _i = 0 Each Sensor: U _i = 15V, I _i = 50mA, P _i = 0.12W, C _i = 150nF & L _i = 150μH
KSR-LF-T6-SC-IEC	Ex ia IIC T4 Gb (-40°C ≤ T _a ≤ +60°C) Ex ia IIC T6 Gb (-40°C ≤ T _a ≤ +40°C)	Potentiometer: U _i = 28V, P _i = 0.19W, C _i = 0 & L _i = 0 Each Sensor: U _i = 15V, I _i = 50mA, P _i = 0.12W, C _i = 150nF & L _i = 150μH
KST-ET-SC-IEC	Ex ia IIC T5 Gb (-40°C ≤ T _a ≤ +60°C) Ex ia IIC T6 Gb (-40°C ≤ T _a ≤ +55°C)	Transmitter: U _i = 24V, I _i = 100mA, P _i = 0.75W, C _i = 5nF & L _i = 0
KST-AT-SC-IEC	Ex ia IIC T5 Gb (-40°C ≤ T _a ≤ +60°C) Ex ia IIC T6 Gb (-40°C ≤ T _a ≤ +56°C)	Transmitter: U _i = 30V, I _i = 130mA, P _i = 0.8W, C _i = 5nF & L _i = 0.5mH
KST-PT-SC-IEC	Ex ia IIC T4 Gb (-40°C ≤ T _a ≤ +60°C) Ex ia IIC T6 Gb (-40°C ≤ T _a ≤ +45°C)	Transmitter: U _i = 30V, I _i = 120mA, P _i = 0.84W, C _i = 1nF & L _i = 10μH
KST-RT-SC-IEC	Ex ia IIC T6 Gb (-40°C ≤ T _a ≤ +60°C)	Transmitter: U _i = 30V, I _i = 130mA, P _i = 1.0W, C _i = 3.6nF & L _i = 0
KST-PF-SC-IEC	Ex ia IIC T6 Gb (-40°C ≤ T _a ≤ +60°C)	Transmitter: U _i = 30V, I _i = 120mA, P _i = 0.84W, C _i = 2nF & L _i = 1μH
KST-PL-SC-IEC	Ex ib IIC T6 Gb (-40°C ≤ T _a ≤ +60°C)	Transmitter: U _i = 17.5V, I _i = 380mA, P _i = 5.32W, C _i = 2nF & L _i = 1μH
KST-ET-LM-SC-IEC	Ex ia IIC T5 Gb (-40°C ≤ T _a ≤ +60°C) Ex ia IIC T6 Gb (-40°C ≤ T _a ≤ +55°C)	Transmitter: U _i = 24V, I _i = 100mA, P _i = 0.75W, C _i = 5nF & L _i = 0 Volt-Free Contacts: U _i = 28V, I _i = 120mA, P _i = 1.3W, C _i = 0 & L _i = 0
KST-AT-LM-SC-IEC	Ex ia IIC T4 Gb (-40°C ≤ T _a ≤ +60°C) Ex ia IIC T6 Gb (-40°C ≤ T _a ≤ +56°C)	Transmitter: U _i = 30V, I _i = 130mA, P _i = 0.8W, C _i = 5nF & L _i = 0.5mH Volt-Free Contacts: U _i = 28V, I _i = 120mA, P _i = 1.3W, C _i = 0 & L _i = 0
KST-PT-LM-SC-IEC	Ex ia IIC T4 Gb (-40°C ≤ T _a ≤ +60°C) Ex ia IIC T6 Gb (-40°C ≤ T _a ≤ +45°C)	Transmitter: U _i = 30V, I _i = 120mA, P _i = 0.84W, C _i = 1nF & L _i = 10μH Volt-Free Contacts: U _i = 28V, I _i = 120mA, P _i = 1.3W, C _i = 0 & L _i = 0
KST-RT-LM-SC-IEC	Ex ia IIC T6 Gb (-40°C ≤ T _a ≤ +60°C)	Transmitter: U _i = 30V, I _i = 130mA, P _i = 1.0W, C _i = 3.6nF & L _i = 0 Volt-Free Contacts: U _i = 28V, I _i = 120mA, P _i = 1.3W, C _i = 0 & L _i = 0
KST-PF-LM-SC-IEC	Ex ia IIC T6 Gb (-40°C ≤ T _a ≤ +60°C)	Transmitter: U _i = 30V, I _i = 120mA, P _i = 0.84W, C _i = 2nF & L _i = 1μH Volt-Free Contacts: U _i = 28V, I _i = 120mA, P _i = 1.3W, C _i = 0 & L _i = 0
KST-PL-LM-SC-IEC	Ex ib IIC T6 Gb (-40°C ≤ T _a ≤ +60°C)	Transmitter: U _i = 17.5V, I _i = 380mA, P _i = 5.32W, C _i = 2nF & L _i = 1μH Volt-Free Contacts: U _i = 28V, I _i = 120mA, P _i = 1.3W, C _i = 0 & L _i = 0
KST-ET-LMR-SC-IEC	Ex ia IIC T4 Gb (-40°C ≤ T _a ≤ +60°C)	Transmitter: U _i = 24V, I _i = 100mA, P _i = 0.75W, C _i = 5nF & L _i = 0 Volt-Free Contacts & Resistors: U _i = 28V, I _i = 120mA, P _i = 1.2W, C _i = 0 & L _i = 0
KST-AT-LMR-SC-IEC	Ex ia IIC T4 Gb (-40°C ≤ T _a ≤ +60°C)	Transmitter: U _i = 30V, I _i = 130mA, P _i = 0.8W, C _i = 5nF & L _i = 0.5mH Volt-Free Contacts & Resistors: U _i = 28V, I _i = 120mA, P _i = 1.2W, C _i = 0 & L _i = 0
KST-PT-LMR-SC-IEC	Ex ia IIC T4 Gb (-40°C ≤ T _a ≤ +60°C)	Transmitter: U _i = 30V, I _i = 120mA, P _i = 0.84W, C _i = 1nF & L _i = 10μH Volt-Free Contacts & Resistors: U _i = 28V, I _i = 120mA, P _i = 1.2W, C _i = 0 & L _i = 0
KST-RT-LMR-SC-IEC	Ex ia IIC T4 Gb (-40°C ≤ T _a ≤ +60°C)	Transmitter: U _i = 30V, I _i = 130mA, P _i = 1.0W, C _i = 3.6nF & L _i = 0 Volt-Free Contacts & Resistors: U _i = 28V, I _i = 120mA, P _i = 1.2W, C _i = 0 & L _i = 0
KST-PF-LMR-SC-IEC	Ex ia IIC T4 Gb (-40°C ≤ T _a ≤ +60°C)	Transmitter: U _i = 30V, I _i = 120mA, P _i = 0.84W, C _i = 2nF & L _i = 1μH Volt-Free Contacts & Resistors: U _i = 28V, I _i = 120mA, P _i = 1.2W, C _i = 0 & L _i = 0
KST-PL-LMR-SC-IEC	Ex ib IIC T4 Gb (-40°C ≤ T _a ≤ +60°C)	Transmitter: U _i = 17.5V, I _i = 380mA, P _i = 5.32W, C _i = 2nF & L _i = 1μH Volt-Free Contacts & Resistors: U _i = 28V, I _i = 120mA, P _i = 1.2W, C _i = 0 & L _i = 0
KST-ET-P-SC-IEC	Ex ia IIC T4 Gb (-25°C ≤ T _a ≤ +60°C) Ex ia IIC T5 Gb (-25°C ≤ T _a ≤ +57°C) Ex ia IIC T6 Gb (-25°C ≤ T _a ≤ +42°C)	Transmitter: U _i = 24V, I _i = 100mA, P _i = 0.75W, C _i = 5nF & L _i = 0 Each Sensor: U _i = 16V, I _i = 52mA, P _i = 0.169W, C _i = 100nF & L _i = 550μH

Model Number	Certification Code(s)	Input Parameters
KST-AT-P-SC-IEC	Ex ia IIC T4 Gb (-25°C ≤ T _a ≤ +60°C) Ex ia IIC T5 Gb (-25°C ≤ T _a ≤ +57°C) Ex ia IIC T6 Gb (-25°C ≤ T _a ≤ +42°C)	Transmitter: U _i = 30V, I _i = 130mA, P _i = 0.8W, C _i = 5nF & L _i = 0.5mH Each Sensor: U _i = 16V, I _i = 52mA, P _i = 0.169W, C _i = 100nF & L _i = 550μH
KST-PT-P-SC-IEC	Ex ia IIC T4 Gb (-25°C ≤ T _a ≤ +60°C) Ex ia IIC T6 Gb (-25°C ≤ T _a ≤ +42°C)	Transmitter: U _i = 30V, I _i = 120mA, P _i = 0.84W, C _i = 1nF & L _i = 10μH Each Sensor: U _i = 16V, I _i = 52mA, P _i = 0.169W, C _i = 100nF & L _i = 550μH
KST-RT-P-SC-IEC	Ex ia IIC T5 Gb (-25°C ≤ T _a ≤ +57°C) Ex ia IIC T6 Gb (-25°C ≤ T _a ≤ +42°C)	Transmitter: U _i = 30V, I _i = 130mA, P _i = 1.0W, C _i = 3.6nF & L _i = 0 Each Sensor: U _i = 16V, I _i = 52mA, P _i = 0.169W, C _i = 100nF & L _i = 550μH
KST-PF-P-SC-IEC	Ex ia IIC T4 Gb (-25°C ≤ T _a ≤ +60°C) Ex ia IIC T6 Gb (-25°C ≤ T _a ≤ +42°C)	Transmitter: U _i = 30V, I _i = 120mA, P _i = 0.84W, C _i = 2nF & L _i = 1μH Each Sensor: U _i = 16V, I _i = 52mA, P _i = 0.169W, C _i = 100nF & L _i = 550μH
KST-PL-P-SC-IEC	Ex ib IIC T4 Gb (-25°C ≤ T _a ≤ +60°C) Ex ib IIC T6 Gb (-25°C ≤ T _a ≤ +42°C)	Transmitter: U _i = 17.5V, I _i = 380mA, P _i = 5.32W, C _i = 2nF & L _i = 1μH Each Sensor: U _i = 16V, I _i = 52mA, P _i = 0.169W, C _i = 100nF & L _i = 550μH
KST-ET-LP-SC-IEC	Ex ia IIC T5 Gb (-40°C ≤ T _a ≤ +60°C) Ex ia IIC T6 Gb (-40°C ≤ T _a ≤ +45°C)	Transmitter: U _i = 24V, I _i = 100mA, P _i = 0.75W, C _i = 5nF & L _i = 0 Each Sensor: U _i = 16V, I _i = 52mA, P _i = 0.169W, C _i = 120nF & L _i = 200μH
KST-AT-LP-SC-IEC	Ex ia IIC T5 Gb (-40°C ≤ T _a ≤ +60°C) Ex ia IIC T6 Gb (-40°C ≤ T _a ≤ +45°C)	Transmitter: U _i = 30V, I _i = 130mA, P _i = 0.8W, C _i = 5nF & L _i = 0.5mH Each Sensor: U _i = 16V, I _i = 52mA, P _i = 0.169W, C _i = 120nF & L _i = 200μH
KST-PT-LP-SC-IEC	Ex ia IIC T4 Gb (-25°C ≤ T _a ≤ +60°C) Ex ia IIC T6 Gb (-25°C ≤ T _a ≤ +45°C)	Transmitter: U _i = 30V, I _i = 120mA, P _i = 0.84W, C _i = 1nF & L _i = 10μH Each Sensor: U _i = 16V, I _i = 52mA, P _i = 0.169W, C _i = 120nF & L _i = 200μH
KST-RT-LP-SC-IEC	Ex ia IIC T5 Gb (-40°C ≤ T _a ≤ +60°C) Ex ia IIC T6 Gb (-40°C ≤ T _a ≤ +45°C)	Transmitter: U _i = 30V, I _i = 130mA, P _i = 1.0W, C _i = 3.6nF & L _i = 0 Each Sensor: U _i = 16V, I _i = 52mA, P _i = 0.169W, C _i = 120nF & L _i = 200μH
KST-PF-LP-SC-IEC	Ex ia IIC T4 Gb (-40°C ≤ T _a ≤ +60°C) Ex ia IIC T6 Gb (-40°C ≤ T _a ≤ +45°C)	Transmitter: U _i = 30V, I _i = 120mA, P _i = 0.84W, C _i = 2nF & L _i = 1μH Each Sensor: U _i = 16V, I _i = 52mA, P _i = 0.169W, C _i = 120nF & L _i = 200μH
KST-PL-LP-SC-IEC	Ex ib IIC T4 Gb (-40°C ≤ T _a ≤ +60°C) Ex ib IIC T6 Gb (-40°C ≤ T _a ≤ +45°C)	Transmitter: U _i = 17.5V, I _i = 380mA, P _i = 5.32W, C _i = 2nF & L _i = 1μH Each Sensor: U _i = 16V, I _i = 52mA, P _i = 0.169W, C _i = 120nF & L _i = 200μH
KST-AT-LP-50-SC-IEC	Ex ia IIC T5 Gb (-40°C ≤ T _a ≤ +60°C) Ex ia IIC T6 Gb (-40°C ≤ T _a ≤ +45°C)	Transmitter: U _i = 30V, I _i = 130mA, P _i = 0.8W, C _i = 5nF & L _i = 0.5mH Each Sensor: U _i = 16V, I _i = 52mA, P _i = 0.169W, C _i = 70nF & L _i = 150μH
KST-RT-LP-50-SC-IEC	Ex ia IIC T5 Gb (-40°C ≤ T _a ≤ +60°C) Ex ia IIC T6 Gb (-40°C ≤ T _a ≤ +45°C)	Transmitter: U _i = 30V, I _i = 130mA, P _i = 1.0W, C _i = 3.6nF & L _i = 0 Each Sensor: U _i = 16V, I _i = 52mA, P _i = 0.169W, C _i = 70nF & L _i = 150μH
KST-ET-F-SC-IEC	Ex ia IIC T5 Gb (-20°C ≤ T _a ≤ +60°C) Ex ia IIC T6 Gb (-20°C ≤ T _a ≤ +55°C)	Transmitter: U _i = 24V, I _i = 100mA, P _i = 0.75W, C _i = 5nF & L _i = 0 Each Sensor: U _i = 15V, I _i = 50mA, P _i = 0.12W, C _i = 145nF & L _i = 340μH
KST-AT-F-SC-IEC	Ex ia IIC T5 Gb (-20°C ≤ T _a ≤ +60°C) Ex ia IIC T6 Gb (-20°C ≤ T _a ≤ +56°C)	Transmitter: U _i = 30V, I _i = 130mA, P _i = 0.8W, C _i = 5nF & L _i = 0.5mH Each Sensor: U _i = 15V, I _i = 50mA, P _i = 0.12W, C _i = 145nF & L _i = 340μH
KST-PT-F-SC-IEC	Ex ia IIC T4 Gb (-20°C ≤ T _a ≤ +60°C) Ex ia IIC T6 Gb (-20°C ≤ T _a ≤ +45°C)	Transmitter: U _i = 30V, I _i = 120mA, P _i = 0.84W, C _i = 1nF & L _i = 10μH Each Sensor: U _i = 15V, I _i = 50mA, P _i = 0.12W, C _i = 145nF & L _i = 340μH
KST-RT-F-SC-IEC	Ex ia IIC T6 Gb (-20°C ≤ T _a ≤ +60°C)	Transmitter: U _i = 30V, I _i = 130mA, P _i = 1.0W, C _i = 3.6nF & L _i = 0 Each Sensor: U _i = 15V, I _i = 50mA, P _i = 0.12W, C _i = 145nF & L _i = 340μH
KST-PF-F-SC-IEC	Ex ia IIC T6 Gb (-20°C ≤ T _a ≤ +60°C)	Transmitter: U _i = 30V, I _i = 120mA, P _i = 0.84W, C _i = 2nF & L _i = 1μH Each Sensor: U _i = 15V, I _i = 50mA, P _i = 0.12W, C _i = 145nF & L _i = 340μH
KST-PL-F-SC-IEC	Ex ib IIC T6 Gb (-20°C ≤ T _a ≤ +60°C)	Transmitter: U _i = 17.5V, I _i = 380mA, P _i = 5.32W, C _i = 2nF & L _i = 1μH Each Sensor: U _i = 15V, I _i = 50mA, P _i = 0.12W, C _i = 145nF & L _i = 340μH
KST-ET-LF-SC-IEC	Ex ia IIC T4 Gb (-40°C ≤ T _a ≤ +60°C) Ex ia IIC T6 Gb (-40°C ≤ T _a ≤ +55°C)	Transmitter: U _i = 24V, I _i = 100mA, P _i = 0.75W, C _i = 5nF & L _i = 0 Each Sensor: U _i = 15V, I _i = 50mA, P _i = 0.12W, C _i = 150nF & L _i = 150μH

Model Number	Certification Code(s)	Input Parameters
KST-AT-LF-SC-IEC	Ex ia IIC T4 Gb (-40°C ≤ T _a ≤ +60°C) Ex ia IIC T6 Gb (-40°C ≤ T _a ≤ +56°C)	Transmitter: U _i = 30V, I _i = 130mA, P _i = 0.8W, C _i = 5nF & L _i = 0.5mH Each Sensor: U _i = 15V, I _i = 50mA, P _i = 0.12W, C _i = 150nF & L _i = 150μH
KST-PT-LF-SC-IEC	Ex ia IIC T4 Gb (-40°C ≤ T _a ≤ +60°C) Ex ia IIC T6 Gb (-40°C ≤ T _a ≤ +45°C)	Transmitter: U _i = 30V, I _i = 120mA, P _i = 0.84W, C _i = 1nF & L _i = 10μH Each Sensor: U _i = 15V, I _i = 50mA, P _i = 0.12W, C _i = 150nF & L _i = 150μH
KST-RT-LF-SC-IEC	Ex ia IIC T6 Gb (-40°C ≤ T _a ≤ +60°C)	Transmitter: U _i = 30V, I _i = 130mA, P _i = 1.0W, C _i = 3.6nF & L _i = 0 Each Sensor: U _i = 15V, I _i = 50mA, P _i = 0.12W, C _i = 150nF & L _i = 150μH
KST-PF-LF-SC-IEC	Ex ia IIC T6 Gb (-40°C ≤ T _a ≤ +60°C)	Transmitter: U _i = 30V, I _i = 120mA, P _i = 0.84W, C _i = 2nF & L _i = 1μH Each Sensor: U _i = 15V, I _i = 50mA, P _i = 0.12W, C _i = 150nF & L _i = 150μH
KST-PL-LF-SC-IEC	Ex ib IIC T6 Gb (-40°C ≤ T _a ≤ +60°C)	Transmitter: U _i = 17.5V, I _i = 380mA, P _i = 5.32W, C _i = 2nF & L _i = 1μH Each Sensor: U _i = 15V, I _i = 50mA, P _i = 0.12W, C _i = 150nF & L _i = 150μH
KST-ET-T-SC-IEC	Ex ia IIC T5 Gb (-20°C ≤ T _a ≤ +60°C) Ex ia IIC T6 Gb (-20°C ≤ T _a ≤ +55°C)	Transmitter: U _i = 24V, I _i = 100mA, P _i = 0.75W, C _i = 5nF & L _i = 0 Each Sensor: U _i = 20V, I _i = 60mA, P _i = 0.08W, C _i = 250nF & L _i = 350μH
KST-AT-T-SC-IEC	Ex ia IIC T5 Gb (-20°C ≤ T _a ≤ +60°C) Ex ia IIC T6 Gb (-20°C ≤ T _a ≤ +56°C)	Transmitter: U _i = 30V, I _i = 130mA, P _i = 0.8W, C _i = 5nF & L _i = 0.5mH Each Sensor: U _i = 20V, I _i = 60mA, P _i = 0.08W, C _i = 250nF & L _i = 350μH
KST-PT-T-SC-IEC	Ex ia IIC T4 Gb (-20°C ≤ T _a ≤ +60°C) Ex ia IIC T6 Gb (-20°C ≤ T _a ≤ +45°C)	Transmitter: U _i = 30V, I _i = 120mA, P _i = 0.84W, C _i = 1nF & L _i = 10μH Each Sensor: U _i = 20V, I _i = 60mA, P _i = 0.08W, C _i = 250nF & L _i = 350μH
KST-RT-T-SC-IEC	Ex ia IIC T6 Gb (-20°C ≤ T _a ≤ +60°C)	Transmitter: U _i = 30V, I _i = 130mA, P _i = 1.0W, C _i = 3.6nF & L _i = 0 Each Sensor: U _i = 20V, I _i = 60mA, P _i = 0.08W, C _i = 250nF & L _i = 350μH
KST-PF-T-SC-IEC	Ex ia IIC T6 Gb (-20°C ≤ T _a ≤ +60°C)	Transmitter: U _i = 30V, I _i = 120mA, P _i = 0.84W, C _i = 2nF & L _i = 1μH Each Sensor: U _i = 20V, I _i = 60mA, P _i = 0.08W, C _i = 250nF & L _i = 350μH
KST-PL-T-SC-IEC	Ex ib IIC T6 Gb (-20°C ≤ T _a ≤ +60°C)	Transmitter: U _i = 17.5V, I _i = 380mA, P _i = 5.32W, C _i = 2nF & L _i = 1μH Each Sensor: U _i = 20V, I _i = 60mA, P _i = 0.08W, C _i = 250nF & L _i = 350μH
KST-ET-LT-SC-IEC	Ex ia IIC T5 Gb (-40°C ≤ T _a ≤ +60°C) Ex ia IIC T6 Gb (-40°C ≤ T _a ≤ +55°C)	Transmitter: U _i = 24V, I _i = 100mA, P _i = 0.75W, C _i = 5nF & L _i = 0 Each Sensor: U _i = 20V, I _i = 20mA, P _i = 0.2W, C _i = 150nF & L _i = 150μH
KST-AT-LT-SC-IEC	Ex ia IIC T5 Gb (-40°C ≤ T _a ≤ +60°C) Ex ia IIC T6 Gb (-40°C ≤ T _a ≤ +56°C)	Transmitter: U _i = 30V, I _i = 130mA, P _i = 0.8W, C _i = 5nF & L _i = 0.5mH Each Sensor: U _i = 20V, I _i = 20mA, P _i = 0.2W, C _i = 150nF & L _i = 150μH
KST-PT-LT-SC-IEC	Ex ia IIC T4 Gb (-40°C ≤ T _a ≤ +60°C) Ex ia IIC T6 Gb (-40°C ≤ T _a ≤ +45°C)	Transmitter: U _i = 30V, I _i = 120mA, P _i = 0.84W, C _i = 1nF & L _i = 10μH Each Sensor: U _i = 20V, I _i = 20mA, P _i = 0.2W, C _i = 150nF & L _i = 150μH
KST-RT-LT-SC-IEC	Ex ia IIC T6 Gb (-40°C ≤ T _a ≤ +60°C)	Transmitter: U _i = 30V, I _i = 130mA, P _i = 1.0W, C _i = 3.6nF & L _i = 0 Each Sensor: U _i = 20V, I _i = 20mA, P _i = 0.2W, C _i = 150nF & L _i = 150μH
KST-PF-LT-SC-IEC	Ex ia IIC T6 Gb (-40°C ≤ T _a ≤ +60°C)	Transmitter: U _i = 30V, I _i = 120mA, P _i = 0.84W, C _i = 2nF & L _i = 1μH Each Sensor: U _i = 20V, I _i = 20mA, P _i = 0.2W, C _i = 150nF & L _i = 150μH
KST-PL-LT-SC-IEC	Ex ib IIC T6 Gb (-40°C ≤ T _a ≤ +60°C)	Transmitter: U _i = 17.5V, I _i = 380mA, P _i = 5.32W, C _i = 2nF & L _i = 1μH Each Sensor: U _i = 20V, I _i = 20mA, P _i = 0.2W, C _i = 150nF & L _i = 150μH

Table 3: Proximity Switches / Sensors and Transmitters Certification Details

Model Code(s)	Proximity Switches/Sensors & Transmitter	IECEx Certificate No.	Standards
P & PH	Type 3 & Type 1 Pepperl and Fuchs Proximity Switches / Sensors	IECEx PTB 11.0021X	IEC 60079-0: 2004 Ed. 4 IEC 60079-11: 2006 Ed. 5 IEC 60079-26: 2006 Ed. 2
		IECEx PTB 11.0037X	IEC 60079-0: 2004 Ed. 4 IEC 60079-11: 2006 Ed. 5 IEC 60079-26: 2006 Ed. 2
		IECEx PTB 11.0091X	IEC 60079-0: 2011 Ed. 6 IEC 60079-11: 2006 Ed. 5 IEC 60079-26: 2006 Ed. 2
		IECEx PTB 11.0092X	IEC 60079-0: 2011 Ed. 6 IEC 60079-11: 2006 Ed. 5 IEC 60079-26: 2006 Ed. 2
LP	Type 3 -40°C Low Ambient Temperature Pepperl and Fuchs Proximity Switches / Sensors	IECEx PTB 11.0092X	IEC 60079-0: 2011 Ed. 6 IEC 60079-11: 2006 Ed. 5 IEC 60079-26: 2006 Ed. 2
LP-50	Type 3 -50°C Low Ambient Temperature Pepperl and Fuchs Proximity Switches / Sensors	IECEx PTB 11.0092X	IEC 60079-0: 2011 Ed. 6 IEC 60079-11: 2006 Ed. 5 IEC 60079-26: 2006 Ed. 2
LPH	Type 1 -40°C Low Ambient Temperature Pepperl and Fuchs Proximity Switches / Sensors	IECEx PTB 11.0092X	IEC 60079-0: 2011 Ed. 6 IEC 60079-11: 2006 Ed. 5 IEC 60079-26: 2006 Ed. 2
LPH-50	Type 1 -50°C Low Ambient Temperature Pepperl and Fuchs Proximity Switches / Sensors	IECEx PTB 11.0092X	IEC 60079-0: 2011 Ed. 6 IEC 60079-11: 2006 Ed. 5 IEC 60079-26: 2006 Ed. 2
F	IFM Proximity Switches / Sensors	IECEx BVS 06.0003	IEC 60079-0: 2011 Ed. 6 IEC 60079-11: 2011 Ed. 6 IEC 60079-26: 2006 Ed. 2
LF	-40°C Low Ambient Temperature IFM Proximity Switches / Sensors	IECEx BVS 09.0016	IEC 60079-0: 2011 Ed. 6 IEC 60079-11: 2011 Ed. 6 IEC 60079-26: 2006 Ed. 2
PF	-40°C Low Ambient Temperature PR Electronics Transmitter	IECEx BVS 12.0035X	IEC 60079-0: 2011 Ed. 6 IEC 60079-11: 2011 Ed. 6
PL	-40°C Low Ambient Temperature PR Electronics FISCO 'ib' Transmitter	IECEx BVS 12.0035X	IEC 60079-0: 2011 Ed. 6 IEC 60079-11: 2011 Ed. 6
T	Hans Turck GmbH Proximity Switches / Sensors	IECEx KEM 06.0036X	IEC 60079-0: 2011 Ed. 6 IEC 60079-11: 2011 Ed. 6 IEC 60079-26: 2006 Ed. 2
LT	-40°C Low Ambient Temperature Hans Turck GmbH Proximity Switches / Sensors	IECEx KEM 06.0036X	IEC 60079-0: 2011 Ed. 6 IEC 60079-11: 2011 Ed. 6 IEC 60079-26: 2006 Ed. 2
ET	Endress & Hauser Transmitter	IECEx PTB 08.0001	IEC 60079-0: 2004 Ed. 4 IEC 60079-11: 2006 Ed. 5 IEC 60079-26: 2004 Ed. 1
AT	ABB Automation Product GmbH Transmitter	IECEx PTB 09.0014X	IEC 60079-0: 2011 Ed. 6 IEC 60079-11: 2011 Ed. 6
PT	PR Electronics Transmitter	IECEx KEM 10.0083X	IEC 60079-0: 2011 Ed. 6 IEC 60079-11: 2011 Ed. 6 IEC 60079-26: 2006 Ed. 2
RT	Rosemount Transmitter	IECEx BAS 07. 0086X	IEC 60079-0: 2011 Ed. 6 IEC 60079-11: 2011 Ed. 6
		IECEx BAS 08.0011X	IEC 60079-0: 2011 Ed. 6 IEC 60079-11: 2011 Ed. 6

Where the above sensors and transmitter are certified to older editions of the standards than those listed for the K1 & K2 Series IS Position Monitor, the differences between the editions of the standards listed have been reviewed and determined to have no technical differences affecting the equipment.