

Roxar Firesafe Wellhead Adapter

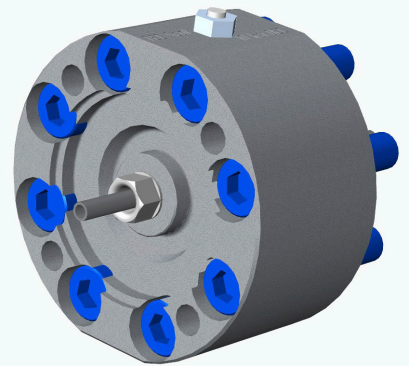
Firesafe Adapter for Downhole ¼" Control Line

Reduce personnel exposure and bring your wells online faster with our safe and easy to install solution.

A cost effective system to enable efficient installation of hydraulic cable exits through defined well barrier envelopes.

The product ensures full compliance with latest regulatory requirements out of the box.

- **Risk Reduction and Superior Performance**
 - Enable compliance to latest regulatory demands with respect to pressure integrity and is also firesafe qualified per API 6FB
 - Enables efficient operations, reduces personnel exposure
- **Standardized**
 - Standardized solution fully compliant with API requirements
 - The result is a quicker handover to production and operations, being able to move to the next well faster
 - Retrofittable, optimal for wells that are already in operations
- **Compatibility**
 - Compatible to any ¼" downhole hydraulic cable from downhole safety valve, chemical injection valve or other hydraulic downhole tools.



The Roxar Firesafe Wellhead Adapter with a ¼" control line.

The adapter forms an API 6FB barrier around the cable and allows installation of a standard hydraulic valve arrangement to complete the hydraulic connection and ensure a safe operation of in-well hydraulic systems.

For more information, visit [Emerson.com/RoxarDownholeWellheadOutlet](https://www.emerson.com/RoxarDownholeWellheadOutlet) or contact your local Emerson Sales Representative

