

# Roxar Wellhead Outlet System

Exit System for Downhole ¼ inch Tubing  
Encased Cable

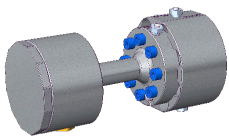


## Improved reliably and reduced installation times

Save 30% on installation time compared to current industry standards. 70% lower weight than the industry standards.

Installing electrical lines on wellheads demands a need for adequate safety barriers with respect to hydraulic integrity as well as electrical safety.

Emerson has developed a validated and certified wellhead outlet system, that enables safe and easy transition from downhole to surface environment. Compliant with the most stringent technical requirements, and international certification bodies the system helps to reduce risk in high pressure, high temperature hazardous environments.



### Easy to install

- Standardized
- Universal interface for common cable versions
- Low weight
- Very few parts
- Out of the box ready



### ATEX/IECEx certified

- Exe, Zone 1



### API compliance

- API 6A, PSL3/3G, PR2
- API 6FB, Firesafe

Fully testable system for your wellhead. All metal to metal seals for all barrier related connections.

For more information, visit  
[Emerson.com/RoxarDownholeWellheadOutlet](http://Emerson.com/RoxarDownholeWellheadOutlet)  
or contact your local Emerson Sales Representative

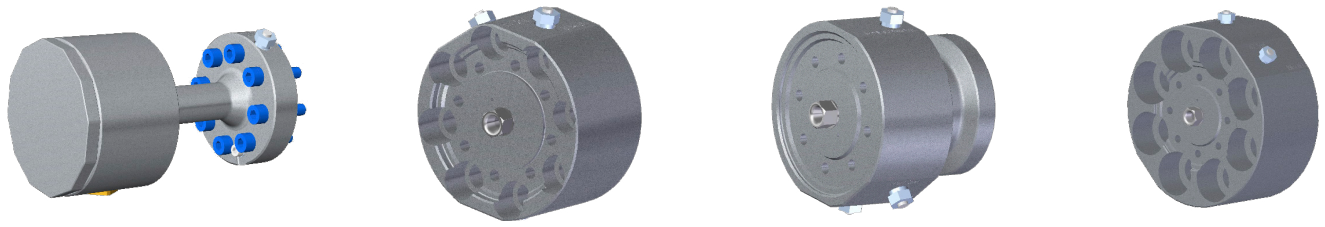


Roxar Wellhead Outlet with GR14 Adapter

The Roxar Wellhead Outlet System installed with the API 6FB barrier adapter and the ATEX certified chamber with test ports.

Simple, safe and easy to install, while compliant with all relevant regulations for cable exit systems on dry wellheads.





- Exit point for downhole instrument cables and surface cabling.
- Universal unit that fits all TEC types listed below

**GR14**

**GR11**

**BX150**

**Technical Specifications**

<b>Size</b>	Length 9 in (228 mm), OD 4.96 in (126 mm) Example Roxar Wellhead Outlet with GR14 interface to wellhead
<b>Weight</b>	<25 lb (<7 kg) Example Roxar Wellhead Outlet with GR14 interface to wellhead, 70% less than comparable products
<b>IP rating</b>	66/67
<b>ATEX</b>	Exe Certified in accordance with IEC 60079-0 and 60079-7
<b>Body material</b>	CRA steel
<b>Temperature rating</b>	API 6A class PV; -20 °F to 250 °F (-29 °C to 121 °C)
<b>Tubing Encased Conductor (TEC)</b>	Mono or dual conductor 16 or 18 AWG, solid or stranded 0.028"/0.035"/0.049" - SS316, Inc625, Inc825
<b>Types of wellhead interface</b>	BX 150, GR11, GR14 stock items (others available on request).

The Emerson logo is a trademark and service mark of Emerson Electric Co.  
Brand logotype are registered trademarks of one of the Emerson family of companies.  
All other marks are the property of their respective owners.  
©2022 Emerson Electric Co. All rights reserved.

00807-0200-6000 Rev BA

**Consider It Solved.**

Emerson Automation Solutions supports you with innovative technologies and expertise to address your toughest challenges.

For more information, visit

[Emerson.com/RoxarDownholeWellheadOutlet](https://www.emerson.com/RoxarDownholeWellheadOutlet)