

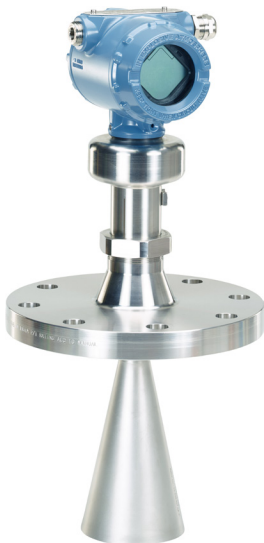


How do I Know the Rosemount 5408 is a Good Fit for Still Pipe Applications?

Non-contacting radar handles many challenging applications including changing fluid characteristics (density, dielectric, conductivity, viscosity) and wide variations in pressure and temperature. The midrange 26 GHz frequency is optimal for typical process level application challenges including condensation, turbulence, nozzles, product build-up, foaming and agitators.

The Rosemount 5408 Level Transmitter offers:

- Broad range of connections
- Wide pressure and temperature limits
- Long measuring range
- No dielectric limits
- HART® Protocol
- SIL2 Certified



CHALLENGES IN STILL PIPE APPLICATIONS

Many applications use still pipes to cope with boiling, turbulent, low dielectric materials, or to avoid interference from obstacles. Still pipe applications can range from vacuum to high pressure applications and can require the use of isolation valves.

THE ADVANTAGE OF RADAR

Non-contacting radar works well over wide pressure ranges and can be used with full port isolation valves.

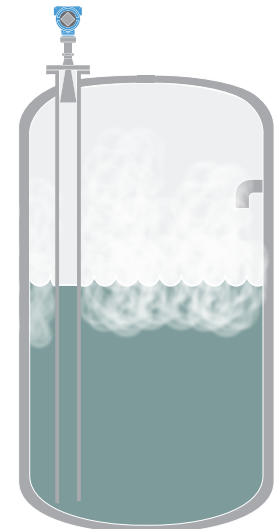
THE CHALLENGE OF RADAR

While the use of still pipes for radar measurements will create much stronger signals, extra echoes can be created which can cause erroneous readings. Very high frequency FMCW units are more susceptible to creation of extra echoes making the correct level measurements difficult to identify.

Containing the signal within a narrow pipe can change the speed of travel of the microwave signal and create an accuracy error even when the correct echo is chosen.

ROSEMOUNT 5408 ADVANTAGES

- The Rosemount 5408 has a special software configuration mode for still pipes which eliminates the incorrect echo reading and corrects for speed of travel in pipes.
- The 26 GHz frequency works well in 2- to 4-in pipes with minimal extra echoes.



For further information please visit
www.Emerson.com/Rosemount/5408




Standard Terms and Conditions of Sale can be found on the [Terms and Conditions of Sale page](#).
The Emerson logo is a trademark and service mark of Emerson Electric Co.
Rosemount and the Rosemount logotype are trademarks of Emerson.
HART is a registered trademark of the FieldComm Group.
All other marks are the property of their respective owners.
© 2017 Emerson. All rights reserved.

 [Linkedin.com/company/Emerson-Automation-Solutions](https://www.linkedin.com/company/Emerson-Automation-Solutions)
 [Twitter.com/Rosemount_News](https://twitter.com/Rosemount_News)
 [Facebook.com/Rosemount](https://www.facebook.com/Rosemount)
 [Youtube.com/user/RosemountMeasurement](https://www.youtube.com/user/RosemountMeasurement)
 [Google.com/+RosemountMeasurement](https://plus.google.com/+RosemountMeasurement)

Global Headquarters
Emerson Automation Solutions

6021 Innovation Blvd
Shakopee, MN 55379 USA
 +1 800 999 9307 or +1 952 906 8888
 +1 952 949 7001
 RFQ.RMD-RCC@Emerson.com




Europe Regional Office
Emerson Automation Solutions
Europe GmbH

Neuhofstrasse 19a P.O. Box 1046,
CH 6340 Baar, Switzerland
 +41 (0) 41 768 6111
 +41 (0) 41 768 6300
 RFQ.RMD-RCC@Emerson.com

Middle East & Africa Regional Office
Emerson Automation Solutions

Emerson FZE P.O. Box 17033
Jebel Ali Free Zone - South 2
Dubai, United Arab Emirates
 +971 4 811 8100
 +971 4 886 5465
 RFQ.RMDMEA@Emerson.com

Asia Pacific Regional Office
Emerson Automation Solutions
Asia Pacific Pte Ltd

1 Pandan Crescent
Singapore 128461
 +65 6777 8211
 +65 6777 0947
 Enquiries@AP.Emerson.com

00807-0700-4408 Rev AA 08/17

ROSEMOUNT™


EMERSON™