

Rosemount™ 1408A Non-Contacting Level and Flow Transmitter

Effortlessly Smart. Reliable level and flow measurement in the water and wastewater industry as well as utility applications.



The advantages of non-contacting radar technology are now within reach for the water & wastewater industry, as well as utilities in other industries. The Rosemount 1408A Level and Flow Transmitter with Fast Sweep Technology provides reliable and robust measurement in a compact housing design with open air approvals. The Rosemount 1408A non-contacting radar is equipped with 4-20 mA/HART® or IO-Link connectivity, which makes it easy to use and simple to install and start-up.

Prevent overfilling and dry running



- Compact continuous level measurement you can trust: All-new chip design provides excellent surface tracking
- Alert operators of critical level limits with the configurable switch output
- Reduced downtime: maximized accuracy and reliability even in challenging rapid-fill vessels

Maximize production capability



- Make more of your tank and eliminate manual rounds: The Rosemount 1408A has no dead zone; level is measured reliably, right to the top of the tank
- Easy system integration: Connect and configure online or offline using IO-Link connectivity
- Maintenance free radar and unaffected by changes in process conditions

Ensure compliance with regulations



- Monitor level and flow parameters in a reliable and accurate manner to minimize the impact on the environment
- Suitable to be used in the open air and resistant to outdoor conditions such as condensation
- Control your process parameters, even remotely, thanks to the possibility to be paired with the Rosemount™ 3490 Controller

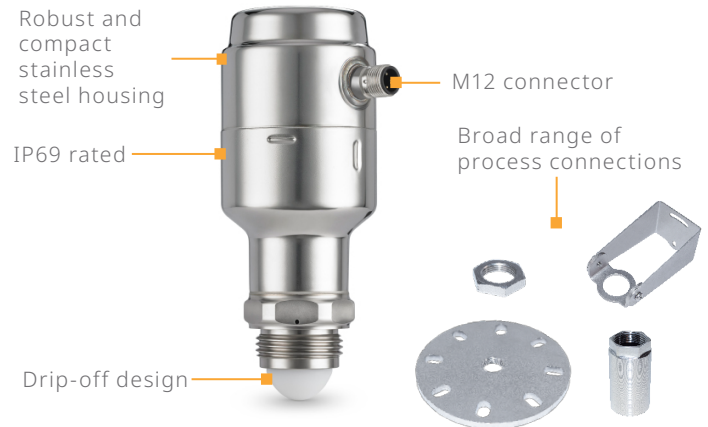


For more information visit
Emerson.com/Rosemount1408A


EMERSON™

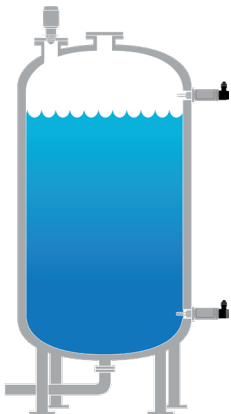
Rosemount 1408A Non-Contacting Radar Level Transmitter

- Energy-efficient single chip that combines 80 GHz and FMCW technology in a compact form factor
- Top down measurement, focused beam angle and no dead zones
- Smart algorithms reduces required configuration steps
- Fast Sweep Technology provides 40 times more data compared to legacy technologies
- Hybrid communication options with 4-20 mA/switch output and IO link digital or 4-20 mA with HART®



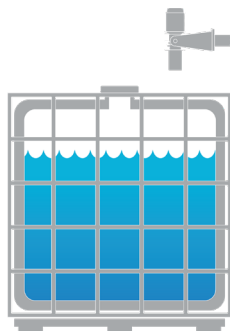
Continuous level applications

Storage tanks



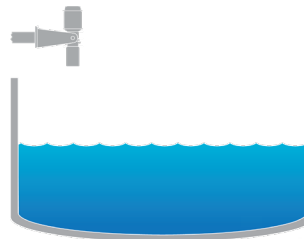
Gain insights into your tank and ensure production runs smoothly without interruption.

Plastic tanks



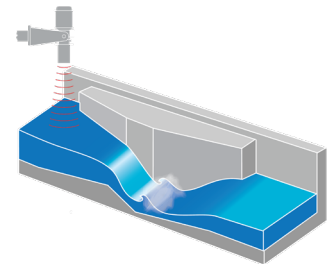
Monitor the inventory of your small and medium sized plastic tanks by measuring through the plastic roof.

Open air applications



Get reliable level measurements of sumps or ponds, regardless of challenging surface and weather conditions.

Open channel flow



Use the Rosemount 1408A for volume flow measurement of water and wastewater in open channels.

Specifications

Measuring range	32.8 ft. (10 m)
Accuracy	±0.08 in (± 2 mm)
Output	2-wire 4-20mA/HART® or 3-wire 4-20 mA, IO-link and switch (PnP/NpN)
Pressure rating	-14.5 to 116 psi (-1 to 8 bar)
Temperature rating	-40 to 302 °F (-40 to 150 °C)
Wetted materials	PTFE, 316L/1.4435, EPDM or FKM
Housing	Polished stainless steel (IP66, 68 and 69)

The Emerson logo is a trademark and service mark of Emerson Electric Co. Emerson is a registered trademark of one of the Emerson family of companies. All other marks are the property of their respective owners. ©2024 Emerson Electric Co. All rights reserved.

00807-0200-4480, Rev BA

