



PLANTWEB ADVISOR FOR METROLOGY

Simplifying Mismeasurement

Plantweb Advisor for Metrology Functionality

Plantweb Advisor for Metrology is Emerson's new modular analytics platform. It is built upon the latest technologies, providing a suite of functions and flexibility that are unprecedented within the measurement world today. This next-generation platform provides a level of standardization and automation of complex tasks that integrate seamlessly across measurement assets and engineering support locations.

The enhanced diagnostic, remote monitoring, predictive capabilities and validation provide greater insight into both process and instrumentation, driving clarity and reducing financial exposure and risk.

Mismeasurement Calculation Module

Calculating mismeasurements can be prone to errors, and is a complex and time-consuming task that requires deep domain expertise. To simplify and automate this process, Plantweb Advisor for Metrology offers a mismeasurement calculation software solution.

This software module interfaces to the historical database maintained by the Plantweb Advisor for Metrology platform, and offers the following functionality:

- Simple user interface that reduces the need for specialist knowledge
- API standard compliance
- Wide range of substitute value algorithms supported
- Liquid and gas calculations available
- Multiple base conditions and reporting periods supported
- Comprehensive suite of customizable reporting templates, providing a full audit trail

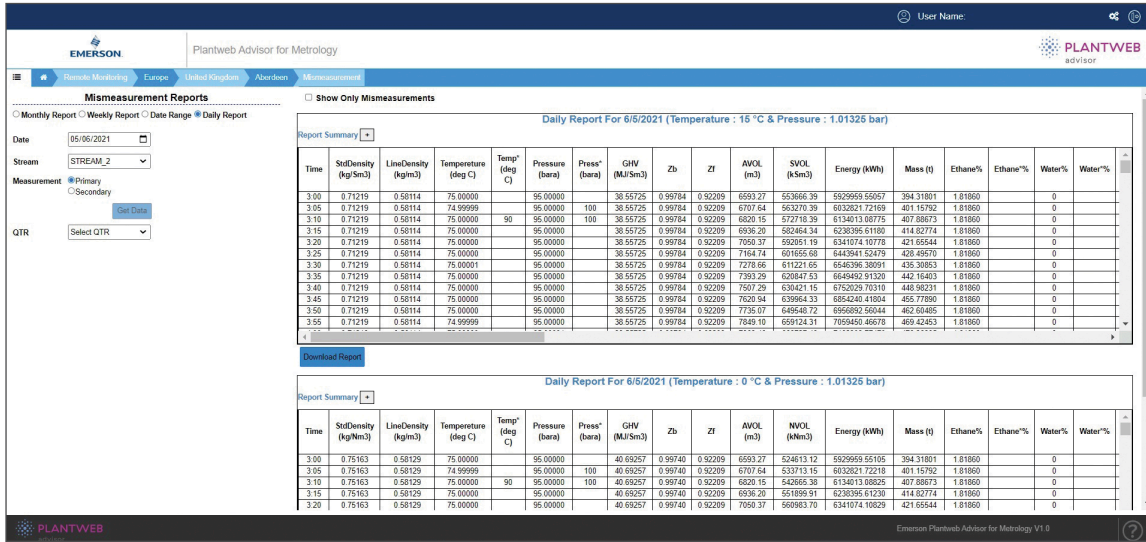


The Mismeasurement Module provides advanced tools that simplify the recalculation and reconciliation of values to ensure proper accounting across assets.

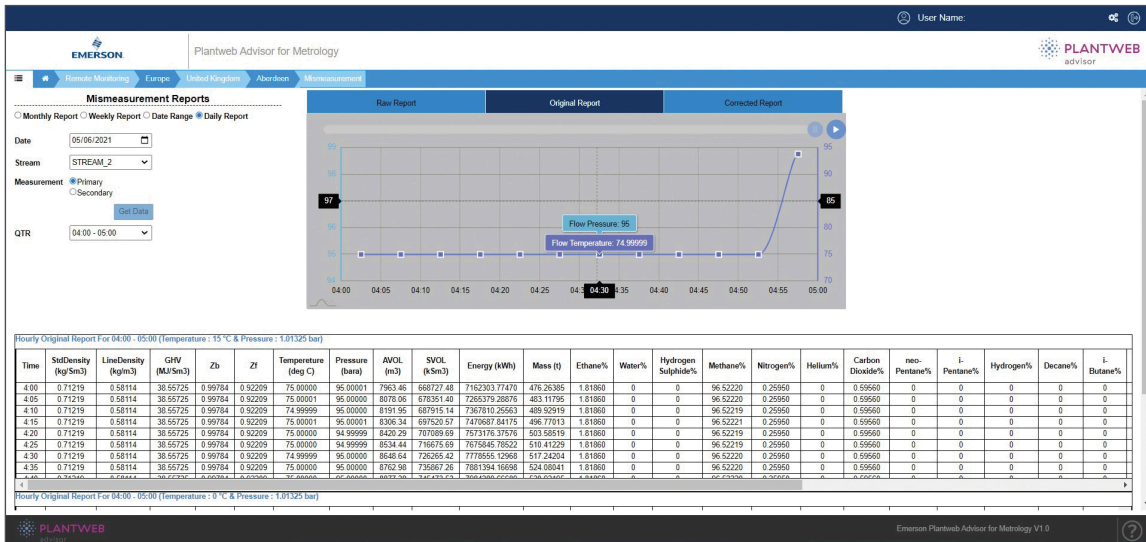
PLANTWEB ADVISOR FOR METROLOGY

User Interface Displays

A number of user interface displays are provided to walk through the process of performing the calculations, with graphical indications of the changes being made. The Mismeasurement Module is integrated with the full suite of Plantweb Advisor for Metrology modules, giving a holistic overview of the measurement system.



Mismeasurement Report



Mismeasurement Graphical Summary

The Emerson logo is a trademark and service mark of Emerson Electric Co. Rosemount is a registered trademark of one of the Emerson family of companies. All other marks are the property of their respective owners. ©2023 Emerson Electric Co. All rights reserved.

00807-0800-4541 Rev AA

