



PLANTWEB ADVISOR FOR METROLOGY

Managing Gas Chromatograph Uncertainty

Plantweb Advisor for Metrology Functionality

Plantweb Advisor for Metrology is Emerson's new modular analytics platform. It is built upon the latest technologies, providing a suite of functions and flexibility that are unprecedented within the measurement world today. This next-generation platform provides a level of standardization and automation of complex tasks that integrate seamlessly across measurement assets and engineering support locations.

The enhanced diagnostic, remote monitoring, predictive capabilities and validation provide greater insight into both process and instrumentation, driving clarity and reducing financial exposure and risk.

Gas Chromatograph Diagnostic Module

Gas chromatographs require periodic checks and calibrations to ensure they perform optimally. Having an automated, online tool provides an added degree of confidence in the performance of the device. For this purpose, Plantweb Advisor for Metrology offers gas chromatograph condition diagnostics.

This software module interfaces to the gas chromatographs either directly or via a flow computer/supervisory/DCS, taking the diagnostic data from the analyzers and offering the following functionality:

- Current vs. Previous analysis deviation
- Current vs. Benchmark analysis deviation
- Dual chromatograph analysis deviation
- Retention Time tracking over time
- Response Factor tracking over time
- Molecular Weight vs. Response Factor Correlation tracking
- Full audit trail of gas chromatograph performance
- Repeatability tracking

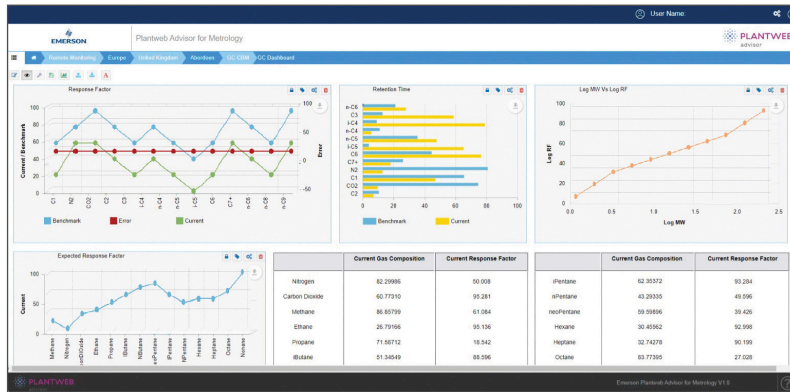


The Gas Chromatograph Module provides diagnostics to detect and predict device failures and deviations that affect measurement uncertainty.

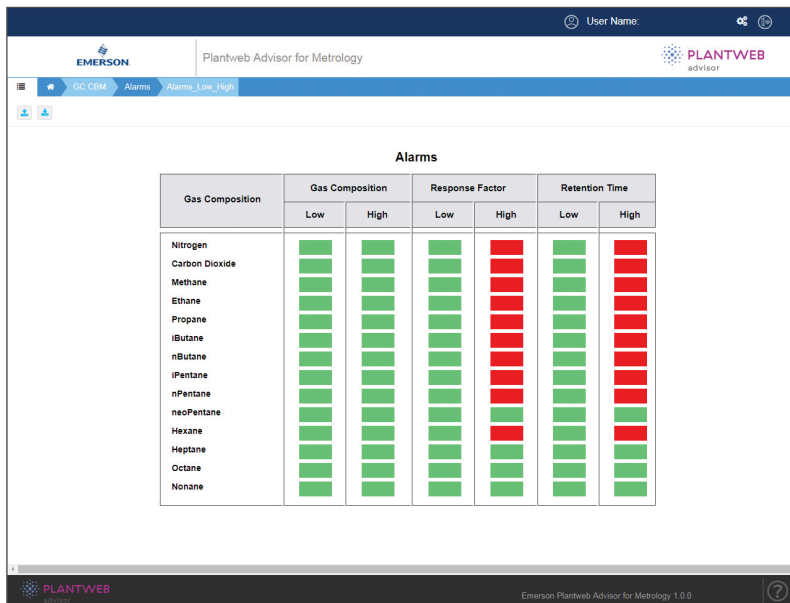
PLANTWEB ADVISOR FOR METROLOGY

Gas Chromatograph Dashboards

A number of dashboards are provided to give at-a-glance performance indication, alongside current and historical trending and configurable reports. The Gas Chromatograph Diagnostic Module is integrated with the full suite of Plantweb Advisor for Metrology modules, giving a cross-check against other devices and a holistic overview of the measurement system.



Gas Chromatograph Dashboard



Example Alarm Page

The Emerson logo is a trademark and service mark of Emerson Electric Co.
 Rosemount is a registered trademark of one of the Emerson family of companies.
 All other marks are the property of their respective owners.
 ©2023 Emerson Electric Co. All rights reserved.

00807-1200-4541 Rev AA

