



PLANTWEB INSIGHT™ POWER MODULE APPLICATION

Providing real-time diagnostics for Emerson power module health.

Streamline power module monitoring across multiple networks and centralize power module data and analysis in one place.

The Plantweb Insight™ Power Module Application offers real-time indication of Emerson power module health through calculated insights, including:

- Power Module Status
- Estimated Total Lifespan
- Estimated Remaining Life

Power Module Status provides an overview of the power module health based on the Estimated Remaining Life and Estimated Total Life. It outputs a Good, Low, or Critical power module status. This allows for optimal use of wireless devices by understanding when maintenance must occur to avoid critical process downtime.

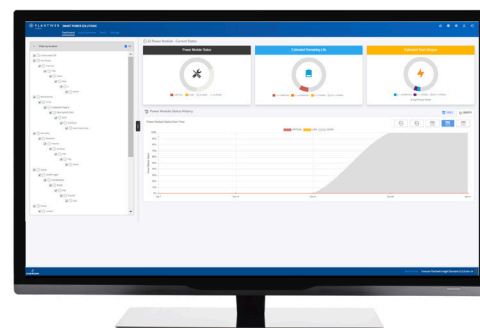
New Estimated Critical Temperature Feature

New with Version 3.2.0, the Power Module Management Application can now be used to estimate and alert the critical temperature of a power module. The Estimated Critical Temperature feature notifies the user of a temperature at which the device is anticipated to go offline. This gives the user actionable information to replace a power module based on temperature conditions.

Benefits include:

- Eliminates the need for manual checks on device power
- Especially useful in climates with a wide-range of temperatures
- Avoids unnecessary process down-time, saving time and money
- The human-centered design is user-tested for consistent and intuitive navigation

The application becomes important for monitoring assets as wireless infrastructures continue to grow. With Version 3.2.0, additional features like email alerting and Estimated Critical Temperature make it easier to plan for maintenance and continue normal operations.



Bring power modules into a central location and improve operational efficiency.



Status Visibility

View current status of all Emerson power modules.



Simplified Maintenance

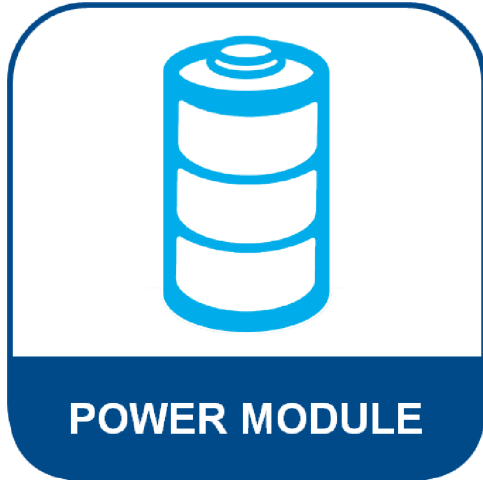
Schedule maintenance with the total estimated remaining life calculation.



Power Consumption

Identify high-consuming devices for possible reconfiguration.

PLANTWEB INSIGHT POWER MODULE APPLICATION



Emerson SmartPower™ Modules are engineered with a robust and adaptable design that withstands harsh environments and allows you to choose the best mode of power for your application.

Version 3.2.0 Features

The Power Module Management Application has recently been upgraded for an enhanced user experience with increased capabilities. New features include:

Estimated Critical Temperature

- Utilizing ambient temperature from the device, the application can calculate and alert an estimated critical temperature that the power module is expected to go offline.

Email Alerting

- The application is now capable of configurable email notifications for immediate or scheduled alerts of calculated insights.

Increased Wireless Portfolio

- Emerson is committed to expanding our wireless portfolio, and with Version 3.2.0, we aim to ensure the most up-to-date device is supported.

Sortable and Exportable Data

- The application is now able to sort and export data based on additional criteria.

Asset Location Hierarchy

- The location-based sorting feature allows users to easily access site-specific assets.

For more information, visit
[Emerson.com/PlantwebInsight](https://emerson.com/PlantwebInsight)

The Emerson logo is a trademark and service mark of Emerson Electric Co.
Rosemount is a registered trademarks of one of the Emerson family of companies.
All other marks are the property of their respective owners. ©2024 Emerson Electric Co. All rights reserved.

00807-2000-4541 Rev AB

