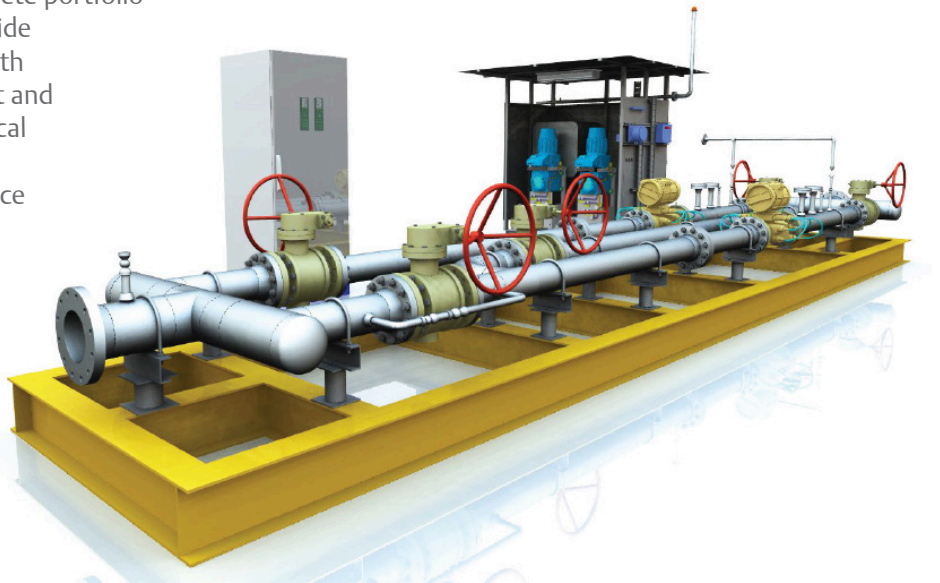


Emerson Gas Ultrasonic Metering System

Integrated metering systems proven to meet the most stringent requirements

With an installed base of over 3000 large-scale systems around the world, Emerson's integrated metering solutions are proven to meet the most stringent requirements. From design to long-term operations, you can secure a greater return on investment by partnering with Emerson. Emerson is the only provider that offers a complete portfolio of instrumentation and control solutions alongside industry-leading expertise and local support. With experience in engineering, project management and operations, Emerson can build an integrated, local solution using our own products and expertise. The result is improved overall fiscal flow assurance for your custody transfer application.

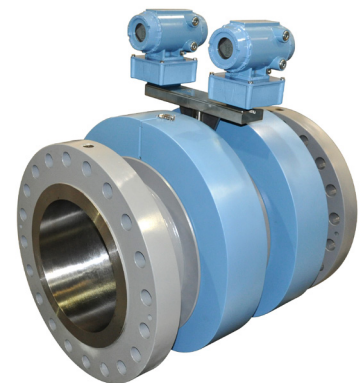
Emerson Gas Ultrasonic Metering System delivers the total solution for energy measurement



System Design

Designed and engineered for custody transfer applications, the Emerson Gas Ultrasonic Metering System is the total solution. This system is designed and built on a structural steel platform, including all piping, supports, valves, and instruments. The complete system is packaged and later transported to the customer's site. The complete package includes:

- Multi-path gas ultrasonic meters with chordal design provide increased accuracy, stability, and redundancy with a high rangeability of >100:1, resulting in operational cost savings
- Temperature and pressure transmitters to measure operating conditions
- Gas analyzers, such as a gas chromatograph, to measure the gas composition
- Flow computers to calculate the quantity and quality of transferred gas
- Parallel design with optional crossover configuration to verify flow measurement accuracy
- Quality management backed by ISO 9000, ISO 14000, ISO 18000, and ISO 29000



Redundant 4+4 Four-Path Gas Ultrasonic Flow Meter



Gas Ultrasonic Metering System

System Specifications

Metering System Configuration and Composition

- 2 x 100% flow configuration
- Rosemount gas ultrasonic meters
 - Model 3414, 3417, 3414, 3416, 3417 or 3418 with dual electronics
- Rosemount pressure transmitters
- Rosemount temperature transmitters
- Temperature and pressure gauges
- Virgo trunnion mounted ball valves, for inlet and outlet isolation
 - Electric or manual operation
 - Double block and bleed
- Sampling tap
- Supplied as a completely piped and cabled package, installed on a rigid structure for transportation, lifting, and operation

Meter Supervisory System

- FlowBoss S600+ flow computer
- Located on-system in a weatherproof panel

Analyzer Options

- Rosemount gas chromatograph
 - 370XA
 - 770XA
- Moisture analyzer
- Hydrocarbon dew point analyzer
- Sulfur analyzer
- Analyzer shelter
 - Canopy
 - 3-sided
 - HVAC housing

To learn more, visit us at: www.Emerson.com

Emerson Automation Solutions

US: +1 800-522-6277
Mexico: +52 55 5809 5300
Argentina: +54 11 4809 2700
Brazil: +55 15 3413 8000
Chile: +56 2 2928 48 00
Peru: +51 15190130

Emerson Automation Solutions

Central Europe: +41 41 7686 111
Eastern Europe: +41 41 7686 111
Dubai: +971 4 811 8100
Abu Dhabi: +971 2 697 2000
Austria: +43 2236 607-0
France: 0800 917 901
Germany: +49 (0) 2173 3348 0
Italy: 8008 77334
The Netherlands: +31 318 495 555
Belgium: +32 2 716 77 11
Spain: 900 901 986
U.K.: 0870 240 1978
Russian/CIS: +7 495 995 9559

Emerson Automation Solutions

Australia: (61) 3 9721 0200
China: (86) 21 2892 9000
India: (91) 22 6662 0566
Japan: (81) 3 5769 6803
South Korea: (82) 31 8034 0000
Singapore: (65) 6 363 7766