

# Field Tools V3.18



Field Tools is a Microsoft® Windows®-based configuration software suite designed to perform maintenance for remote terminal unit (RTU) and flow computers in the field. Field Tools provides technicians and engineers with a single software toolkit that performs all necessary configuration and diagnostics.

This enhanced tool kit can launch the following configuration tools for Emerson flow computers and RTUs:

- FBxConnect™
- ROCLINK™ 800
- TechView
- FBxNet™
- Credential manager
- FBxConnect™ Licensing Tool

With the above, Field Tools provides support for:

- Series FB1000 and FB2000 Series Flow Computers
- FB3000 RTUs
- ROC RTUs
- FloBoss™ flow computers
- ControlWave® flow computers and RTUs

## Key Benefits

- **Ease of Use:** incorporates an intuitive graphical user interface
- **Cost Effective:** complimentary downloadable from Guardian.
- **Fast Configuration, Commissioning, and Startup Times:** efficiently imports and exports connection trees from both ROCLINK 800 and Field Tools
- **Increases Productivity:** permits multiple simultaneous instances of component tools
- **Reduced Time-in-field:** supports both online and offline configuration
- **User Management and Security:** tailors security to role-based access and provides greater password and user name flexibility
- **Enables Security Management:** credential manager simplifies the task of updating multiple

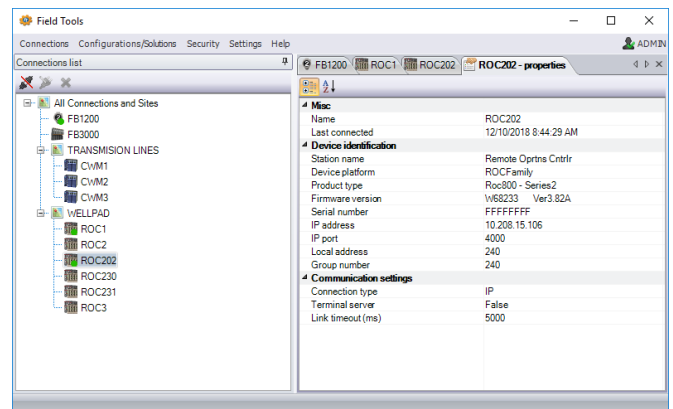
RTUs and flow computers when administrators need to add, remove, or update users accounts.

**Note:** Simply edit a file then update all the selected RTUs and flow computers with the new credentials.

- **Increased User Safety:** optional FBxWifi™ functionality eliminates the need to climb tanks or go to hazardous areas to establish a physical device connection.

## Features

- Launches FBxConnect, FBxNet, credential manager, ROCLINK 800, FBxConnect Licensing Tool and TechView configuration tools
- Provides one tool for simple site connection and management for supported Emerson's flow computers and RTUs



Field Tools

The software and user documentation are available as a free download from our Guardian site.

**Note:** Activating a new Guardian account may take up to 24 hours to process; plan your need for this software accordingly.

## Field Tools Specifications and Requirements

### Software Operating Environment

Operating System	32- or 64-bit Microsoft® Windows® 10 Professional, Windows 10 Enterprise, Windows 11 Professional, Windows 2012 Server, Windows 2016 Server, Windows 2019 Server. <b>Note:</b> If you choose not to upgrade to a supported operating system, there is a risk of incomplete or incorrect installation.
------------------	--

### Hardware Operating Requirements

CPU	Intel® Core™ 2 Duo T7100 or similar specification Intel CPU (minimum)
Hard Disk Space	2.5 GB
RAM	8 GB
Display	1366 x 768 or better resolution (OS-compatible)
Network Ports	USB port and/or Ethernet

### Compatibility

FB1000 Series Flow Computers	Firmware version 02.18 recommended; backward compatible
FB2000 Series Flow Computers	Firmware version 02.18 recommended; backward compatible
FB3000 Series RTU	Firmware version 02.18 recommended; backward compatible
ROC800-Series	Firmware version 3.92 or newer
ROC800L	Firmware version 1.72 or newer
FloBoss 107	Firmware version 2.01 or newer
ControlWave Micro	Firmware version 6.13 or newer
ROCLINK™ 800 Configuration Software	Version 2.73 or newer
IEC62591 Module	Firmware version 1.24 or newer
TechView	Version 5.9 Service Pack 3 Patch B
FB3000 FBxRTU IEC61131 Library	01.06.00.01
Distributed RTU™ Network Bundle	Firmware version 1.00 or newer

**Note:** Field Tools **cannot** reside on the same PC as OpenEnterprise™ or ObjectServer.

For customer service and technical support, visit [Emerson.com/Guardian](https://emerson.com/guardian).

**North America and Latin America:**

Emerson Energy and Transportation Solutions  
6005 Rogerdale Road  
Houston, TX 77072 U.S.A.  
T +1 281 879 2699 | F +1 281 988 4445  
[Emerson.com/SCADAforEnergy](https://emerson.com/SCADAforEnergy)

**United Kingdom:**

Emerson Process Management Limited  
Fosse House, 6 Smith Way  
Grove Park, Enderby  
Leicester LE19 1SX UK  
T +44 0 870 240 1978

**Europe:**

Emerson S.R.L  
Regulatory Compliance Shared Services Department  
Company No. J12/88/2006  
Emerson 4 Street  
Parcul Industrial Tetarom 11  
Romania  
T +40 374 132 000

**Middle East/Africa:**

Emerson Energy and Transportation Solutions  
Emerson FZE  
P.O. Box 17033  
Jebel Ali Free Zone - South 2  
Dubai U.A.E.  
T +971 4 8118100 | F +971 4 8865465

**Asia-Pacific:**

Emerson Energy and Transportation Solutions  
1 Pandan Crescent  
Singapore 128461  
T +65 6777 8211 | F +65 6777 0947

© 2014-2024 Bristol Inc. All rights reserved.

This publication is for informational purposes only. While every effort has been made to ensure accuracy, this publication shall not be read to include any warranty or guarantee, express or implied, including as regards the products or services described or their use or applicability. Bristol Inc. (hereinafter "Energy and Transportation Solutions" or ETS) reserves the right to modify or improve the designs or specifications of its products at any time without notice. All sales are governed by ETS terms and conditions which are available upon request. ETS accepts no responsibility for proper selection, use or maintenance of any product, which remains solely with the purchaser and/or end-user. Emerson and the Emerson logo are trademarks and service marks of Emerson Electric Co. All other marks are the property of their respective owners.