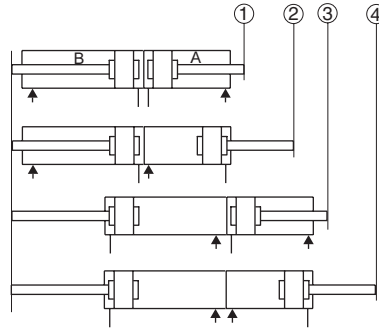


### FEATURES

- System consisting of two standard cylinders mounted back-to-back and connected by a support or four tie rods. This arrangement provides:
  - three positions if the two cylinders have the same stroke
  - four positions if the two cylinders have different strokes



### GENERAL

#### Detection

Equipped for magnetic position detectors

#### Cushioning

Pneumatic, adjustable from both sides with captive screw

Max. stroke of the two cylinders 1 m

### HOW TO ORDER

Consult the online configurator - CAD files on: [www.asco.com](http://www.asco.com)

The following mountings do not fit back-to-back cylinders:

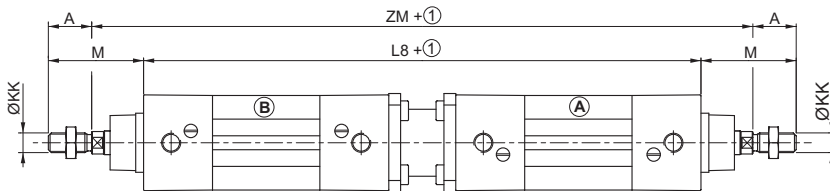
- Straight complete trunnion
- Complete trunnion with angular clevis bracket
- Rear flange

### DIMENSIONS (mm)



#### SINGLE-ROD TYPE CYLINDER

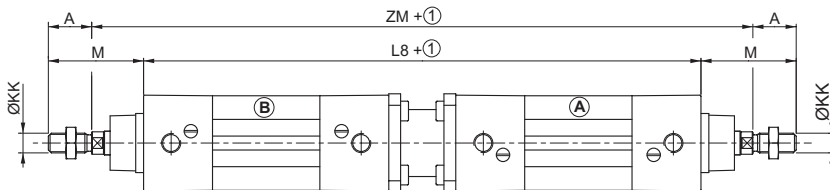
453 Series  
Ø 32 to 100 mm  
(125 mm: contact us)



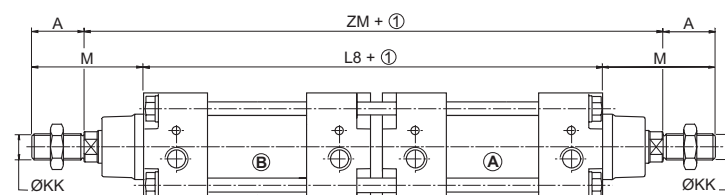
#### SINGLE-ROD TYPE CYLINDER

450 Series  
Ø 32 to 200 mm

Ø 32 to 100 mm



Ø 125 to 200 mm



① Stroke (B) + Stroke (A)

Ø (mm)	A	ØKK	L8		M	ZM		
			453	450		453	450	
32	32	22	M10x1,25	222	197	48	274	249
40	40	24	M12x1,25	244	219	54	304	279
50	50	32	M16x1,5	249	221	69	323	295
63	63	32	M16x1,5	279	251	69	353	325
80	80	40	M20x1,5	302	265	86	394	357
100	100	40	M20x1,5	322	285	91	424	387
-	125	54	M27x2	-	332	119	-	462
-	160	72	M36x2	-	372	152	-	532
-	200	72	M36x2	-	372	167	-	562