

## LOCKOUT VALVE

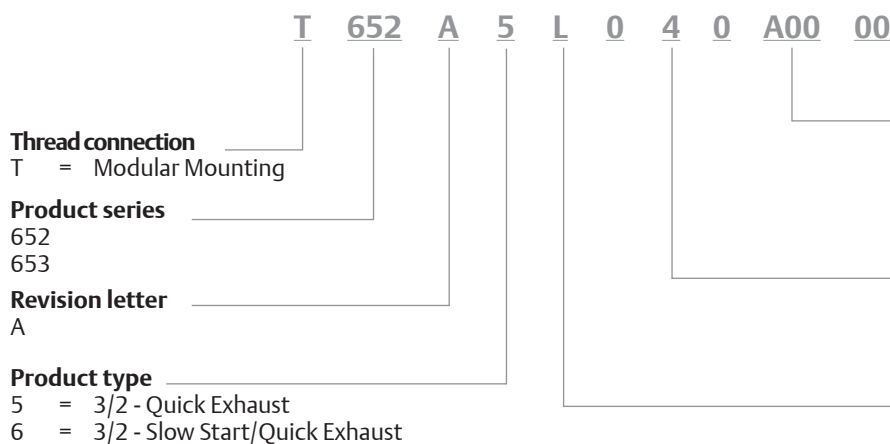
- Modular assembly to Series 652 or 653 manifold using common Body-to-Body clamps
- Provides high exhaust capacity of downstream pressure
- Available as Full Flow Start or Slow Start
- Slow Start feature allows operator to turn knob counter clock wise to “On” position, gradually ramping up downstream pressure
- Bright yellow body with red knob is easily identified as an emergency shut off device
- Typically located as the final component in an Air Preparation assembly

Performance Data					
Series		652		653	
Port sizes*		1/2		1	
Nominal flow		1 → 2	2 → 3	1 → 2	2 → 3
	l/min (ANR)	5905	5905	9850	9850
Ambient temperature range (°C)		+4 to +50			
Fluid temperature range (°C)		+4 to +50			
Maximum pressure (bar)		10.3		17	
Fluid		air or inert gas			
Weight (kg)	Standard	1.23		2.89	
	Slow Start	1.39		3.23	

\*Ports are not threaded (grey flanges). Easily connect to Series 652 or 653 Manifold. When connecting to pipe, use end plate kits on page 50.

Materials in contact with fluid	
Body	Aluminium
Seals	NBR
Spool	Aluminium

## How to Order - Lockout Valve



## 3/2 Lockout Valve with Slow Start Feature



## 3/2 Lockout Valve



Configurator - CAD Files

### Options <sup>(1)</sup>

- A00 = No option
- 111 = Metal Muffler
- 115 = Scissor Lock
- 2B9 = 111 + 115

### Port size

- 4 = 1/2 (Series 652)
- 6 = 1 (Series 653)

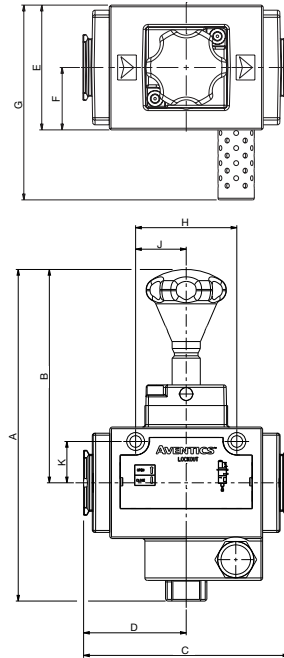
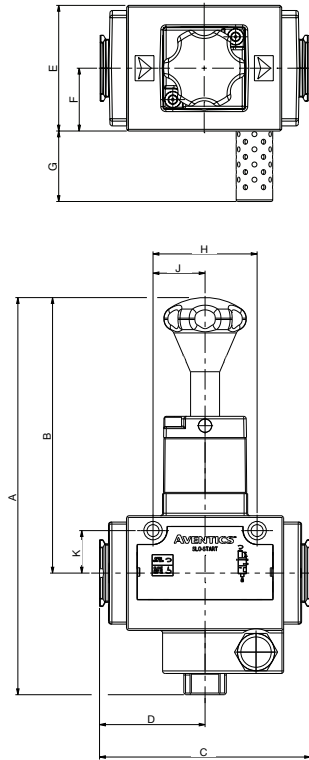
### Valve Type

- L = Manually Operated Lockout

<sup>(1)</sup> If multiple options are required, please use the on-line CAD configurator on the website to generate the part number ([www.emerson.com](http://www.emerson.com)).

Encombrements : mm - Series 652/653 Lockout Valve

Configurator - CAD Files



Note: When the knob is pushed down (Closed position), the lockout shaft extends out of the bottom by 12,2 mm. The lockout hole diameter in the shaft is 11,2 mm. These measurements are the same for the standard Lockout and the Slow-Start version.

**3/2 Lockout Valve with Slow Start Feature**

	A	B	C	D	E
<b>652</b>	237.5	164.9	126.2	63.1	76.2
<b>653</b>	291	198.8	150.5	75.3	101.6

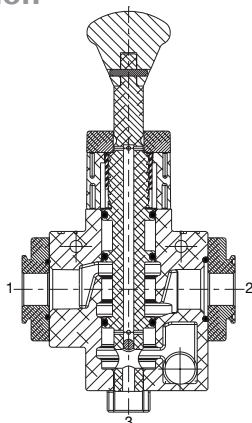
	F	G	H	J	K
<b>652</b>	38.1	42.7	62.2	31.1	25.4
<b>653</b>	50.8	77.3	82.8	41.4	27.9

**3/2 Lockout Valve**

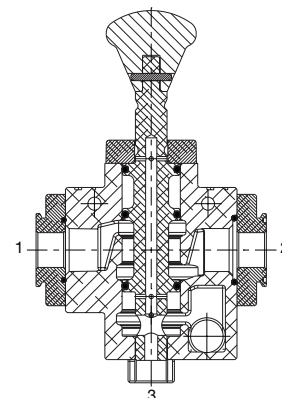
	A	B	C	D	E
<b>652</b>	204	131.3	126.2	63.1	76.2
<b>653</b>	247.8	155.6	150.5	75.3	101.6

	F	G	H	J	K
<b>652</b>	38.1	119	62.2	31.1	25.4
<b>653</b>	50.8	178.9	82.8	41.4	27.9

**3/2 Lockout Valve with Slow Start Feature Cross Section**



**3/2 Lockout Valve Cross Section**



01811CB-2020/R01 Availability, design and specifications are subject to change without notice. All rights reserved.