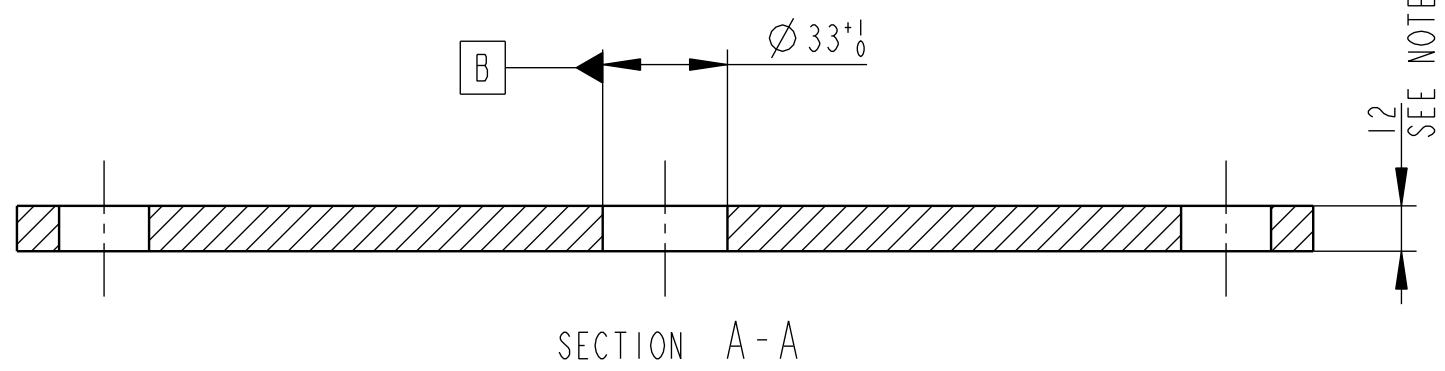
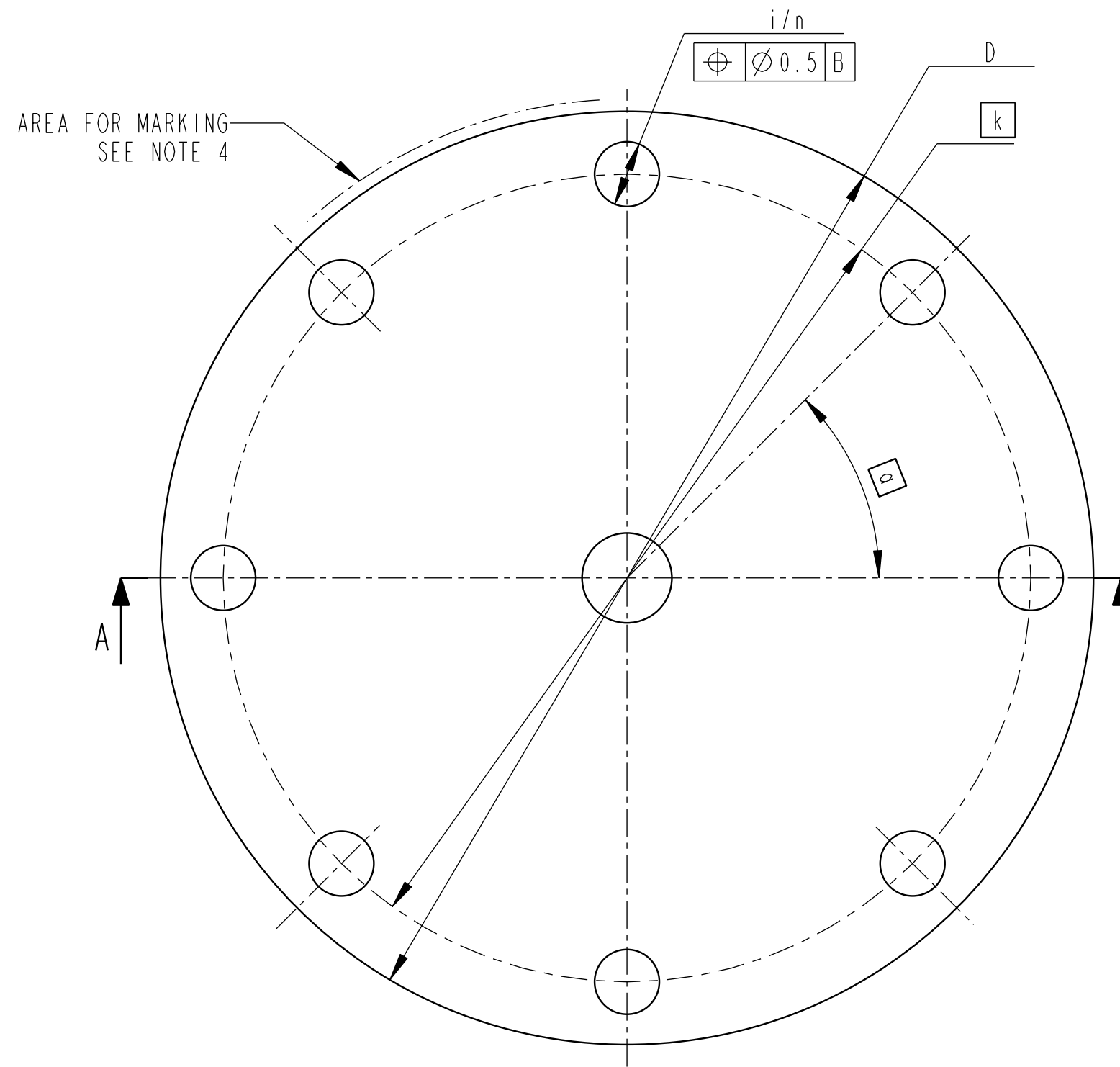


REVISION	ECO NO.	APP'D	DATE
05	SME-8645	EMe-MH	1604
DESCRIPTION			
IMPORTED TO PROE FROM I-DEAS. NOTE 1 AND 4 INFORMATION CHANGED.			



SIZE	ØD	k	Øi	n	α	PART No.	FITTING STD	
5"	254±1	215,9	22,2	$\begin{matrix} +1 \\ -0 \end{matrix}$	8	45°	9150072-371	5"-150# -
6"	279,4±1	240,6	22,8	$\begin{matrix} +1 \\ -0 \end{matrix}$	8	45°	9150072-372	6"-150# DN150 PN16
8"	342,9±1	296,8	23,8	$\begin{matrix} +1 \\ -0 \end{matrix}$	8	45°	9150072-373	8"-150# DN200 PN10
10"	406,4±1	358,2	29,2	$\begin{matrix} +1 \\ -0 \end{matrix}$	12	30°	9150072-374	10"-150# DN250 PN16
12"	482,6±1	431,8	25,4	$\begin{matrix} +1 \\ -0 \end{matrix}$	12	30°	9150072-375	12"-150# -



4. MARKING:  
5: 2 MARKED WITH PART NO, MATERIAL MADE IN XXXX AND CHARGE NO.  
(XXXX EQUALS COUNTRY OF ORIGIN AND MATERIAL EQUALS 316/316L/1.4404)  
TEXT HEIGHT 5mm.
3. HOLE PATTERN FIT STANDARDS ASME B16.5 AND EN1092-1 ACC TO TABLE ABOVE.
2. DELIVERY CONDITIONS: ID ACC. TO EN 10088-2  
TOLERANCES: CLASS B ACC. TO EN 10029
1. MATERIAL:  
5: 1 STAINLESS STEEL SA/A240 Gr. 316/316L AND EN10028-7-1.4404.  
(TRIPLE CERTIFICATED MATERIAL)  
MAXIMAL HARDNESS: 237HBW(HB) (22HRC).  
MATERIAL SHALL COMPLY WITH THE REQUIREMENTS IN NACE MR0103 AND  
NACE MR0175 / ISO 15156.  
MATERIAL CERTIFICATE ACCORDING TO EN 10204 3.1  
WITH HARDNESS VALUE INCLUDED.

D9150072-370	ISSUED BY GU-TKA	DRAWN WEEK 0344	PRODUCT CODE 5900	 BOX 150, 435 23 MÖLNLYCKE, SWEDEN											
	APPROVED BY GU-JW	APP'D WEEK 0344	DOC TYPE 0												
	UNLESS OTHERWISE SPECIFIED: ALL DIMENSIONS ARE IN MILLIMETERS. REMOVE ALL BURRS AND SHARP EDGES.				TITLE FLANGE THIN, TABLE DWG										
	<table border="0"> <tr> <td colspan="2">- GENERAL TOLERANCES -</td> <td>FINISH: 6.3</td> </tr> <tr> <td>MACHINING: ISO 2768 mK</td> <td>CASTING: ISO 8062 CT 5</td> <td>ANGLES: ±2°</td> </tr> <tr> <td>WELDING: EN-ISO 13920 A, E</td> <td></td> <td></td> </tr> </table>				- GENERAL TOLERANCES -		FINISH: 6.3	MACHINING: ISO 2768 mK	CASTING: ISO 8062 CT 5	ANGLES: ±2°	WELDING: EN-ISO 13920 A, E			DRAWING NO. D9150072-370	ISSUE 05
- GENERAL TOLERANCES -		FINISH: 6.3													
MACHINING: ISO 2768 mK	CASTING: ISO 8062 CT 5	ANGLES: ±2°													
WELDING: EN-ISO 13920 A, E															
1 ST ANGLE 	SCALE 1:2	SIZE A3	CAD MAINTAINED. (PRO/E) DO NOT SCALE PRINT	THE COPYRIGHT/OWNERSHIP OF THIS DOCUMENT IS AND WILL REMAIN OURS. THE DOCUMENT MUST NOT BE USED WITHOUT AUTHORIZATION OR BROUGHT TO THE KNOWLEDGE OF A THIRD PARTY. CONTRAVENTION WILL BE PROSECUTED. ROSEMOUNT TANK RADAR AB, SWEDEN											

2016-02-12 Electronic Master - Printed Copies Uncontrolled - Emerson Proprietary