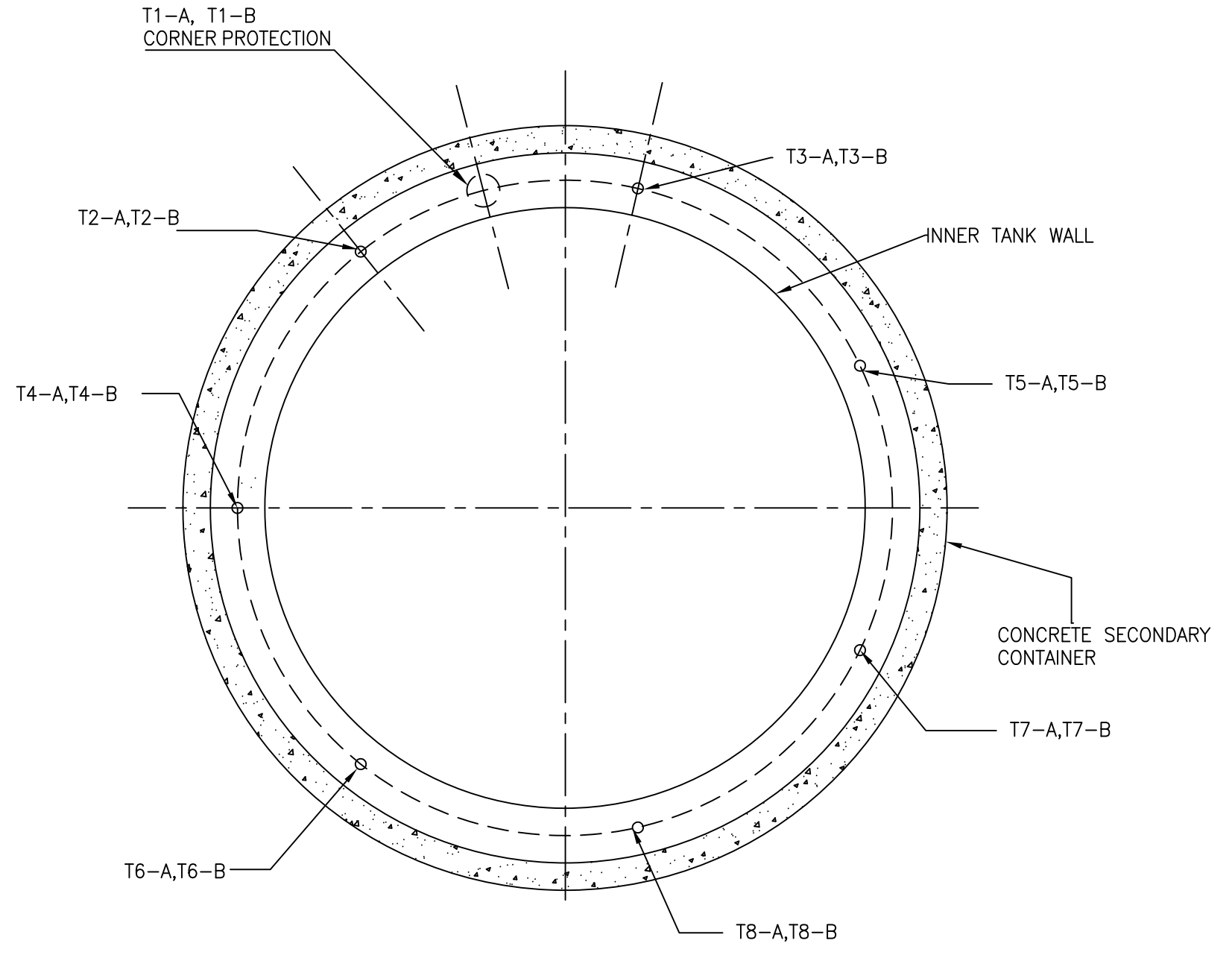
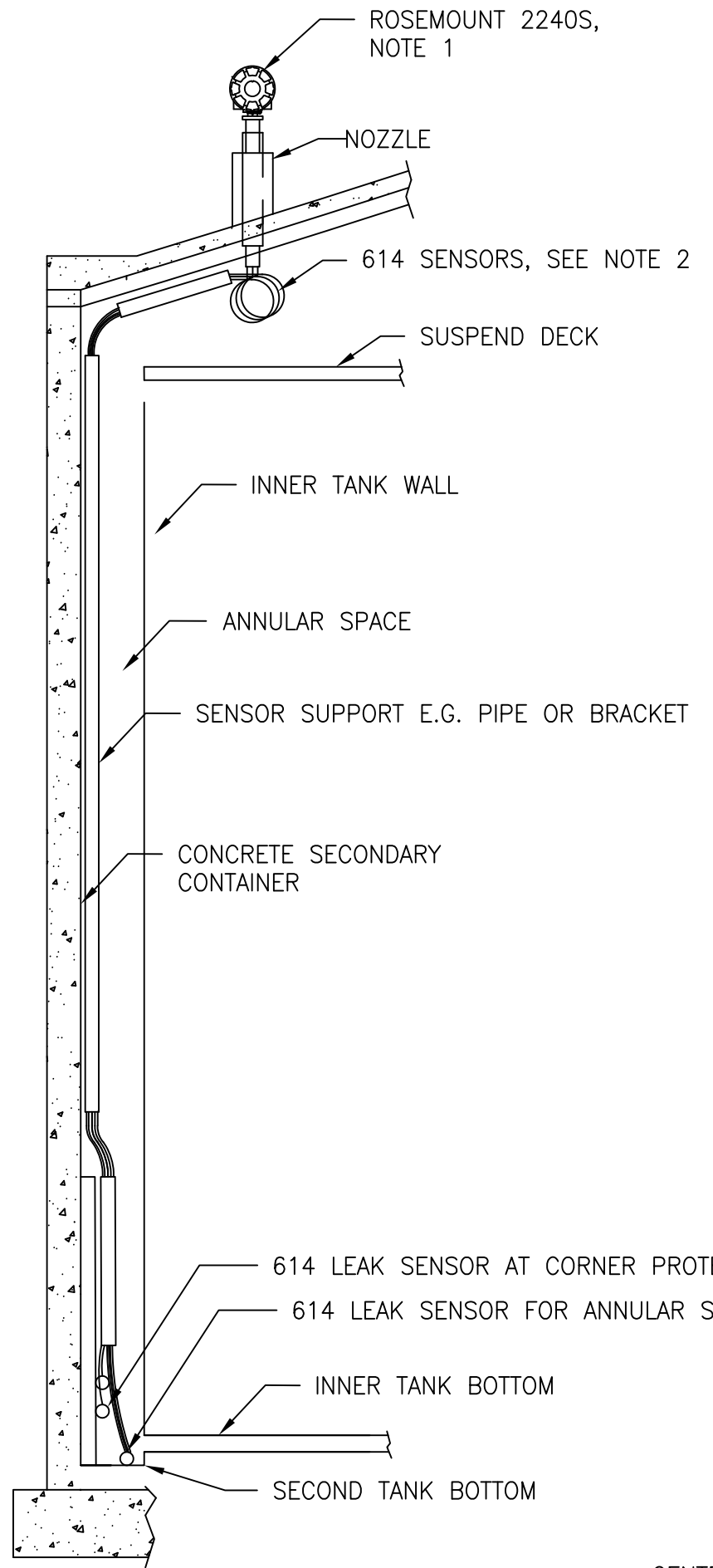

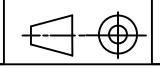


TYPICAL DISTRIBUTION OF LEAK TEMPERATURE SENSOR ELEMENTS FOR CORNER PROTECTION AND ANNULAR SPACE



CENTER OF TANK

- 03 L0 = ROUTING DISTANCE FROM 2240 FLANGE TO LEAK TEMPERATURE SENSOR ELEMENT, WHERE SLACK IS TYPICALLY 2000mm
- 02 614 MINIMUM/SMALLEST POSSIBLE BENDING RADIUS = 100mm
- 01 2240 MOUNTED ON CONICAL CONNECTION OR REMOTE JUNCTION BOX

ISSUED BY TP-HH	DRAWN WEEK 1917	PRODUCT CODE 5900	 LAYOUTVAGEN 1, 435 33 MÖLNLYCKE, SWEDEN
APPROVED BY TT-CH	APP'D WEEK 1917	DOCUMENT TYPE 02	
ORIGINAL DRAWING NO. 9261085-035	SIZE A3	1 ST ANGLE 	SCALE 1:1
CAD MAINTAINED, (ACAD)		DO NOT SCALE PRINT	
DRAWING NO. 9261085-035			ISSUE SHEET 03 1/1

THE COPYRIGHT/OWNERSHIP OF THIS DOCUMENT IS AND WILL REMAIN OURS. THE DOCUMENT MUST NOT BE USED WITHOUT AUTHORIZATION OR BROUGHT TO THE KNOWLEDGE OF A THIRD PARTY. CONTRAVENTION WILL BE PROSECUTED. ROSEMOUNT TANKRADAR AB, SWEDEN

2019.06-25 Electronic Master - Printed Copies Uncontrolled - Emerson Proprietary