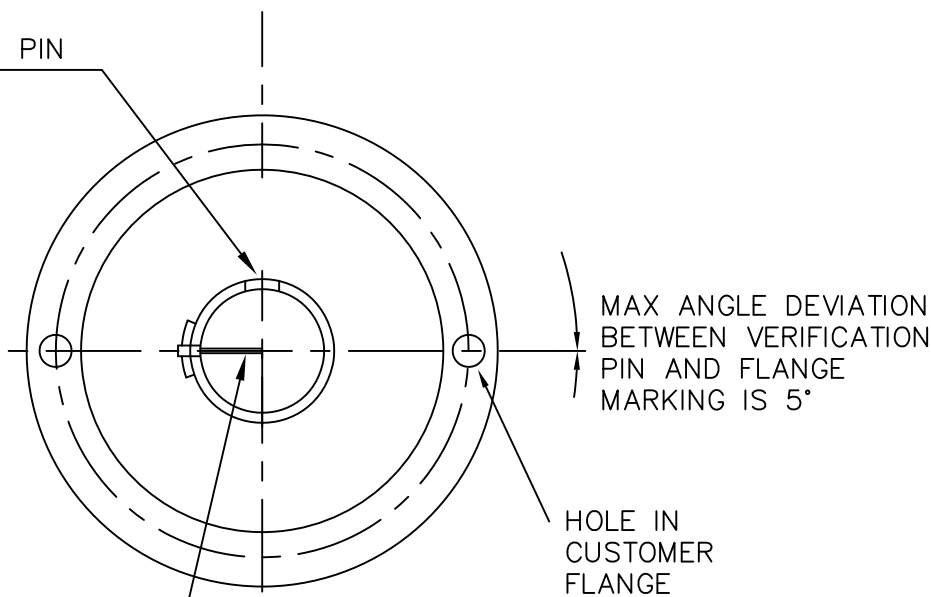
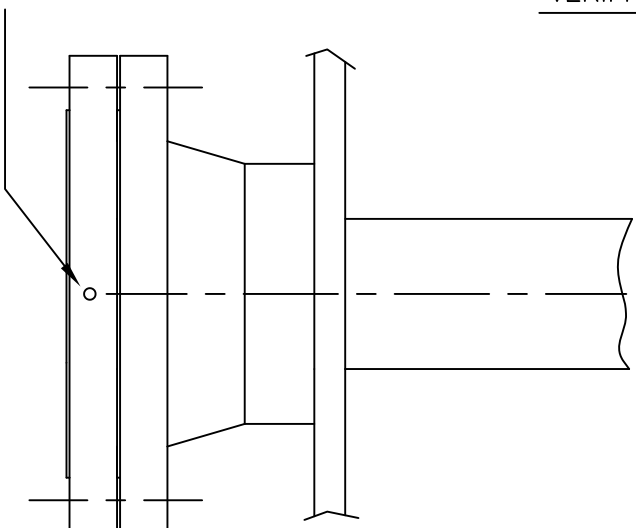


MARKING IN PIPE FLANGE CORRESPONDING TO VERIFICATION PIN.

THE EQUALIZATION HOLES MUST BE ORIENTATED 90° FROM THE VERIFICATION PIN



IMPORTANT:
VERIFICATION PIN MUST BE DIRECTED TOWARDS ONE BOLT HOLE IN CUSTOMERS FLANGE. MARKING MUST BE DONE TO INDICATE THE POSITION OF THE VERIFICATION PIN AND THE CORRESPONDING FLANGE HOLE WITHIN 5°. THIS MARKING IS TO BE USED DURING MOUNTING OF THE RTG.

FOR DETAILED REQUIREMENTS ON STILL PIPE INSTALLATION, VERIFICATION PIN AND REFLECTOR KIT SEE DOCUMENT D7000005-484.

3. FOR SIL INSTALLATION: MIN. 500 MM
2. GENERAL RECOMMENDATION:
FOR 6" L = 1800mm, MIN. DISTANCE 2000mm AND MAX. DISTANCE 2500mm.
FOR 4" L = 1200mm, MIN. DISTANCE 1000mm AND MAX. DISTANCE 2500mm.
GENERAL RECOMMENDATION FOR FULL CONTAINMENT TANKS 4000mm.
REFER D7000005-337 FOR POSITIONING OF THE REF. PIN AT SUSPEND DECK.
1. ALL DIMENSION IS VALID ATT 20°C.

POS	ITEM DESCRIPTION	QTY	REMARK	SUPPLIER
08	OUTER SLEEVE	1	STAINLESS STEEL	CUSTOMER
07	REFLECTOR KIT	1	STAINLESS STEEL	RTR
06	GASKET	1	SOFT OR FLEXIBLE METALLIC TYPE	CUSTOMER
05	VERIFICATION PIN KIT	1	STAINLESS STEEL	RTR
04	PIPE FLANGE	1	STAINLESS STEEL	CUSTOMER
03	FOOT	3	STAINLESS STEEL	CUSTOMER
02	SLIDING GUIDE FOR THE PIPE	1	STAINLESS STEEL	CUSTOMER
01	STILL PIPE	1	STAINLESS STEEL	CUSTOMER

ISSUED BY EMe-BL	WEEK 1033	PRODUCT CODE 5900	FILE ACAD	INSTALLATION DRAWING TITLE MECHANICAL INSTALLATION DWG
APPROVED BY EMe-MH	WEEK 1043	ORIGINAL DWG NO. -	SCALE 1:1	5900 LPG/LNG STILL PIPE ATTACHED TO PIPE FLANGE
LAYOUTVÄGEN 1 435 33 MÖLNLYCKE SWEDEN		1 ST ANGLE	DOC TYPE 2	DWG NO. D9240041-910
EMERSON			ISSUE 05	SHEET 1/1

THE COPYRIGHT/OWNERSHIP OF THIS DOCUMENT IS AND WILL REMAIN OURS. THE DOCUMENT MUST NOT BE USED WITHOUT OUR AUTHORIZATION OR BROUGHT TO THE KNOWLEDGE OF A THIRD PARTY. CONTRAVENTION WILL BE PROSECUTED. ROSEMOUNT TANK RADAR AB, SWEDEN.