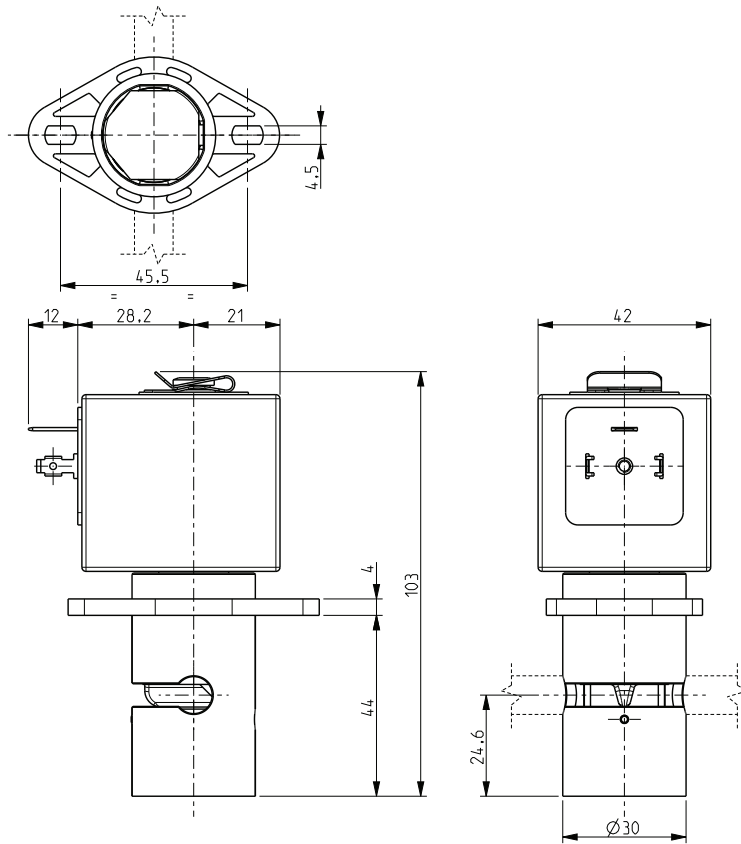


ASCO™ PINCH SOLENOID VALVE

2/2 NORMALLY OPEN

SERIES
S226



General Features

Pinch solenoid valve, suitable to shut off media without producing neither turbulent flows nor dead spaces. High flow rate under the same conditions of internal diameter of different solenoid valves; the system allows a bi-directional through flow. The valves are suitable for soft SILICONE tubings or others, similar as to elasticity and hardness (50 shore A).

The tubing is the only material in contact with the fluid.

The tubings are not included in our supply.

| Materials | |
|---------------------|-----------------------------------|
| Body | PA (Poliammide) |
| Pinching device | POM (reinforced acetal copolymer) |
| Internal components | Stainless steel |
| Core tube | Stainless steel |

Installation

- Solenoid valve can be mounted in any position.
- Swivel bracket every 45°.

| Coil | |
|------------------------|--|
| Continuous Duty | ED 100% |
| Encapsulation material | PET (polyethylene terephthalate) fiberglass reinforced |
| Insulation class | F (140°C) |
| Ambient temperature | -10°C +60°C |
| Electric connections | DIN 46340 - 3 poles plug-connectors (EN175301-803) |
| Protection degree | IP 65 (DIN 40050) with plug-connectors |
| Voltages | DC 12-24V (+10% -5%) (Other voltages on request) |

| TUBINGS | | Pinching strength (kg) | Series and type | | Power absorption (W) | Notes | Weight (kg) |
|-----------|-----------|------------------------|-----------------|--------------|----------------------|-------|-------------|
| I.D. (mm) | O.D. (mm) | | Valve | Coil | | | |
| 4,8 | 7,9 | 2,400 | S226-01 | Z130A | 13 | - | 0,440 |
| 6,4 | 9,5 | | | | | | |

Notes

- In case the tubing is not placed in its seat, the solenoid valve could operate incorrectly.