

SEMPELL PRESSURE SEAL CAST CHECK VALVES - STYLE A
 SWING CHECK, TILTING DISC AND PISTON CHECK CONFIGURATION

A wide range of check valves specifically designed for high pressure and high temperature applications



FEATURES

- A range of pressure seal Check Valves designed according to ASME B16.34.
- Available in Swing Check, Tilting disc and Piston Check (Y and T pattern design)
- All range is offered in all the material stated in the ASTM specifications, and designed to always guarantee the maximum safety and flow efficiency.
- End to end dimensions as per ASME B16.10
- Swing and tilting disc check valves can be installed on both horizontal and vertical (up-flow) piping.
- Stop check valves (Y and T patterns) are designed to be installed on horizontal piping.
- Tilting disc check valves are designed utilizing triple offset seat geometry to prevent the disc slamming, stable disk operation and to ensure, at the same time, a quick closing service.
- Tilting disc seat is manufactured directly in the body therefore removal of seat/body welding avoids distortion of seat face.

GENERAL APPLICATION

Our pressure seal check valves are recommended for a very large variety of applications, particularly in those requiring suitability to very high pressures and temperature applications for steam and water in the power industry. These high quality valves are successfully installed worldwide on applications requiring flow reversal prevention.

TECHNICAL DATA

Sizes: DN 50 to 600 and larger (NPS 2-24)
 Temperature (°C): -46 to + 650
 Pressure ratings: ASME Class 1200, 1900 and 2500 for Swing Check type
 ASME Class 1000, 1690 and 2850 for Tilting Disc type
 ASME Class 1200, 1900 and 2850 for Piston Check T pattern
 ASME Class 1200, 1900 and 2850 for Piston Check Y pattern
 Body materials: All the cast materials stated in the ASTM spec

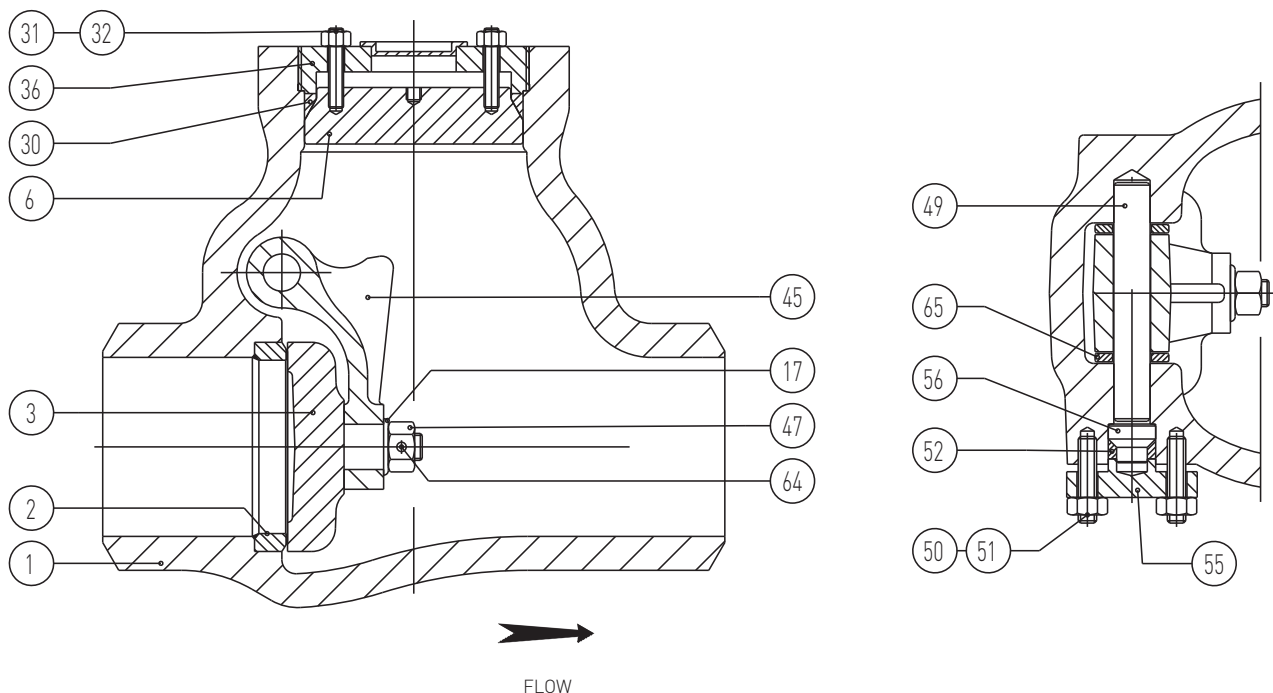
Connections standards

Butt Weld according to ASME B16.25.
 Flanged Ends available for Swing Check, Tilting Disc, Piston check T pattern, according to ASME B16.5

SEPELL PRESSURE SEAL CAST CHECK VALVES - STYLE A

SWING CHECK, TILTING DISC AND PISTON CHECK CONFIGURATION

SWING CHECK VALVES



MATERIAL SELECTION

Item	Description	Body in WCB	Body in WC6	Body in CF8M
1	Body	A216 WCB	A217 WC6	A351 CF8M
2	Seat ring	A105 + AWS ER 430	A182 F22 + AWS ER 430	A182 F316
3	Disc	A216 WCB + AWS ER 430	A217 WC6 + AWS ER 430	A351 CF8M
6	Bonnet	A105	A182 F11	A182 F316
17	Washer	A182 F316	A182 F316	A182 F316
30	P.S. gasket	Soft iron silver plated	Soft iron silver plated	A182 F316
31	Bolt	A193 B7	A193 B16	A193 B8
32	Nut	A194 2H	A194 4	A194 8
36	Bonnet retaining ring	A105	A182 F11	A182 F316
45	Hinge	A216 WCB	A217 WC6	A351 CF8M
47	Nut	A194 2H	A194 4	A194 8
49	Hinge pin	A182 F6a	A182 F6a	A182 F316
50	Bolt	A193 B7	A193 B16	A193 B8
51	Nut	A194 2H	A194 4	A194 8
52	Pin gasket	Flexible graphite	Flexible graphite	Flexible graphite
55	Hinge pin cover	A105	A182 F22	A182 F316
56	Hinge pin plug	A182 F6a	A182 F6a	A182 F316
64	Split pin	Steel	Steel	Stainless steel
65	Spacer ring	A182 F6a	A182 F6a	A182 F316

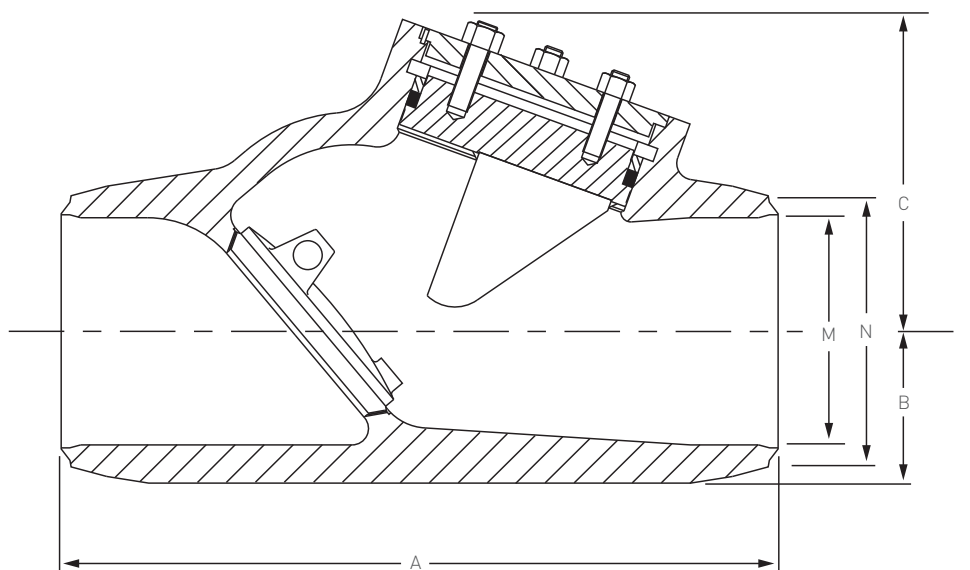
NOTES

- Other materials are available on request.
Please consult supplier.

SEPELL PRESSURE SEAL CAST CHECK VALVES - STYLE A

SWING CHECK, TILTING DISC AND PISTON CHECK CONFIGURATION

TILTING DISC CHECK VALVE



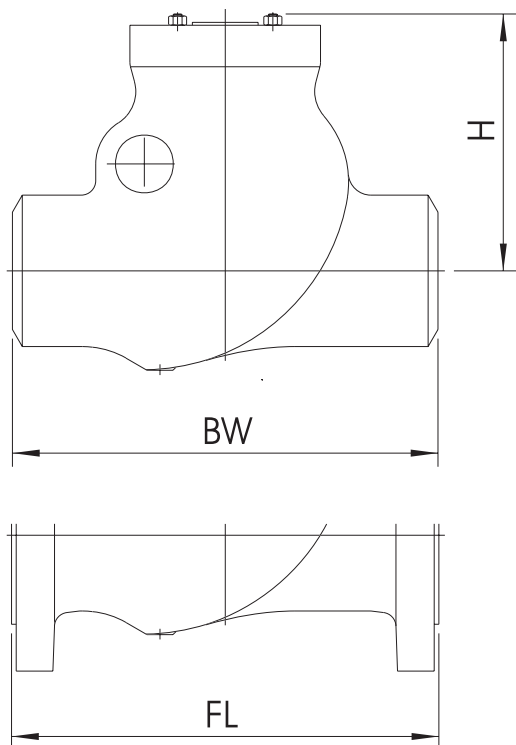
MAIN COMPONENT MATERIALS

Description	Carbon steel		Alloy steel	
	ASTM A-216 Gr. WCB	ASTM A-217 Gr. WC6	ASTM A-217 Gr. WC9	ASTM A-217 Gr. C12A
Body	ASTM A-216 Gr. WCB	ASTM A-217 Gr. WC6	ASTM A-217 Gr. WC9	ASTM A-217 Gr. C12A
Bonnet	ASTM A-105	ASTM A-182-F-22 class 3	ASTM A-182-F-22 Class 3	ASTM A-182-F-91
Cover	EN10028 P265GH (1.0425)	ASTM A-182-F-12	ASTM A-182-F-12	ASTM A-182-F-22
Hinge pin	ASTM A565-XM32	ASTM A565-XM32	ASTM A565-XM32	ASTM A565-XM32
Hinge pin bush	EN1008 17CrNi16-2 (1.4057)	EN1008 17CrNi16-2 (1.4057)	EN1008 17CrNi16-2 (1.4057)	EN1008 17CrNi16-2 (1.4057)
Hinge pin housing	EN1008 17CrNi16-2 (1.4057)	EN1008 17CrNi16-2 (1.4057)	EN1008 17CrNi16-2 (1.4057)	EN1008 17CrNi16-2 (1.4057)
Disc	ASTM A-216 Gr. WCB	ASTM A-217 Gr. WC6	ASTM A-217 Gr. WC9	ASTM A-217 Gr. C12A
Gasket	Expanded Graphite	Expanded Graphite	Expanded Graphite	Expanded Graphite
Pressure seal ring	Expanded Graphite	Expanded Graphite	Expanded Graphite	Expanded Graphite

SEPELL PRESSURE SEAL CAST CHECK VALVES - STYLE A

SWING CHECK, TILTING DISC AND PISTON CHECK CONFIGURATION

SWING CHECK CONFIGURATION



Size	DN	NPS	ASME class 1200				ASME class 1690					ASME class 2500					
			FL	BW	H	W1	W2	FL	BW	H	W1	W2	FL	BW	H	W1	W2
50	2		-	-	-	-	-	368	368	205	45	32	451	451	235	90	48
65	2½		-	-	-	-	-	419	419	220	80	48	508	508	240	140	78
80	3		381	381	235	70	47	470	470	250	95	58	578	578	285	160	98
100	4		457	457	265	135	72	546	546	295	150	100	673	673	310	220	148
125	5		-	-	-	-	-	-	-	-	-	-	-	-	-	-	-
150	6		610	508	370	275	160	705	559	390	370	220	914	610	415	610	305
200	8		737	660	450	470	300	832	711	470	640	425	1022	762	555	1300	655
250	10		838	787	500	625	460	991	864	535	1250	700	1270	914	640	1900	985
300	12		965	914	555	950	690	1130	991	610	1750	1130	1422	1041	665	2850	1410
350	14		1029	991	620	1400	960	1257	1067	700	2400	1455	-	1118	600	-	1800
400	16		1130	1092	680	1650	1290	1384	1194	770	3235	1970	-	1245	700	-	2300
450	18		1219	1143	730	2230	1750	1537	1346	830	3880	2890	-	1397	770	-	2770
500	20		1321	1245	780	2850	2290	1664	1473	850	5510	3800	-	1524	840	-	3340
550	22		-	-	-	-	-	-	-	-	-	-	-	-	-	-	-
600	24		1549	1397	850	4300	3530	1943	1752	980	7400	5000	-	1676	950	-	4660

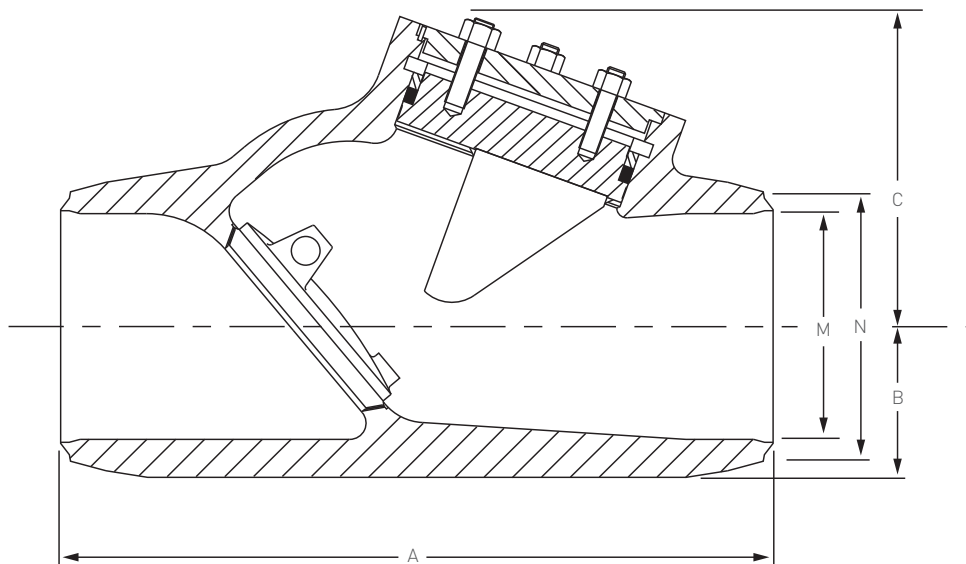
NOTES

- All dimensions are in mm.
- Sizes and classes larger than mentioned here are available: please consult supplier for more information.
- W1 corresponds to weight in kilos for flanged body style. For sizes larger than NPS 24, weight depends on flange standards.
- W2 corresponds to weight in kilos for welding body style.

SEPELL PRESSURE SEAL CAST CHECK VALVES - STYLE A

SWING CHECK, TILTING DISC AND PISTON CHECK CONFIGURATION

TILTING DISC CONFIGURATION



Size	DN	NPS	ASME class 1000				ASME class 1690				ASME class 2850			
			A❖	B	C	kg	A❖	B	C	kg	A❖	B	C	kg
	150	6	508	91	259	105	559	95	276	172	610	98	257	241
	200	8	660	122	315	201	711	126	339	321	762	128	339	442
	250	10	787	152	370	328	864	157	413	537	914	163	402	768
	300	12	914	193	435	535	991	185	499	893	1041	190	496	1268
	350	14	991	197	463	749	1066	200	529	952	1117	201	526	1309
	400	16	1092	231	533	969	1194	231	597	1616	1245	239	632	2086
	450	18	1219	244	597	1294	1346	265	662	1871	1397	265	702	2675
	500	20	1321	265	662	1722	1473	293	732	2772	1524	291	735	3484
	600**	24*	1549	343	790	2888	1676	352	879	4435	1727	354	936	5756

NOTES:

❖ Per ASME B16.10

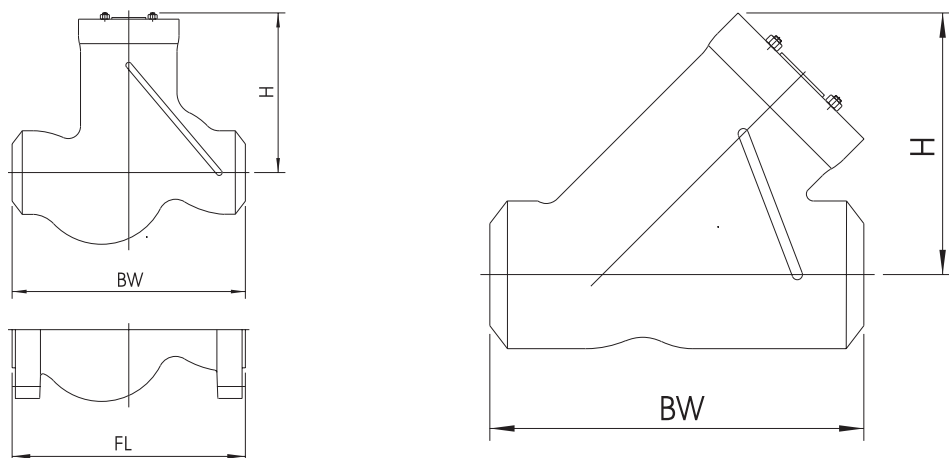
* NPS 24 nominal sizes not shown in ASME B16.10

** DN 600 nominal sizes not shown in ASME B16.10

SEPELL PRESSURE SEAL CAST CHECK VALVES -STYLE A

SWING CHECK, TILTING DISC AND PISTON CHECK CONFIGURATION

PISTON CHECK CONFIGURATION



Size DN NPS	ASME class 1200						ASME class 1690					ASME class 2850					ASME class 1900			ASME class 2850		
	T pattern		H	W1	W2	FL	BW	H	W1	W2	FL	BW	H	W1	W2	Y pattern			BW	H	W	
FL	BW	BW														H	W					
50 2	-	-	-	-	-	368	368	240	60	40	451	451	330	70	60	-	-	-	-	-	-	
65 2½	-	-	-	-	-	419	419	275	80	55	508	508	260	115	65	-	-	-	-	-	-	
80 3	381	381	270	65	50	470	470	280	100	65	578	578	280	185	100	381	250	50	368	240	85	
100 4	457	457	335	135	95	546	546	335	155	100	673	673	330	355	170	406	290	85	457	320	130	
125 5	-	-	-	-	-	-	-	-	-	-	-	-	-	-	-	-	-	-	-	-	-	
150 6	610	610	400	250	190	705	705	390	280	245	914	914	390	720	435	559	360	215	610	350	330	
200 8	737	737	490	445	300	832	832	470	660	500	1022	1022	460	1100	610	711	440	430	762	460	645	
250 10	838	838	565	695	480	991	991	580	890	610	1270	1270	580	1540	840	864	590	660	914	610	1025	
300 12	965	965	665	1045	760	1130	1130	680	1380	850	1422	1041	640	2090	960	991	640	960	1041	650	1200	
350 14	-	-	-	-	-	-	-	-	-	-	-	-	-	-	-	1067	700	1000	1130	720	1360	
400 16	-	-	-	-	-	-	-	-	-	-	-	-	-	-	-	1194	750	1550	1245	800	2150	
450 18	-	-	-	-	-	-	-	-	-	-	-	-	-	-	-	1473	810	1800	1397	870	2975	
500 20	-	-	-	-	-	-	-	-	-	-	-	-	-	-	-	1676	890	2490	1524	960	3630	
550 22	-	-	-	-	-	-	-	-	-	-	-	-	-	-	-	-	-	-	-	-	-	
600 24	-	-	-	-	-	-	-	-	-	-	-	-	-	-	-	1727	1050	3000	1829	1220	5650	

NOTES

1. All dimensions are in mm.
2. Sizes and classes larger than mentioned here are available; please consult supplier for more information.
3. W1 corresponds to weight in kilos for flanged body style.
4. W2 corresponds to weight in kilos for welding body style.

SEMPELL PRESSURE SEAL CAST CHECK VALVES - STYLE A

SWING CHECK AND PISTON CHECK CONFIGURATION

1200 RATING CLASS (ASME B16.34)

ASTM Body mat'l cast	ASME code B16.34	Pressure in bar at temp. °C																				
		-29°																				
		to 38°	50	100	150	200	250	300	325	350	375	400	425	450	475	500	538	550	575	600	625	650
WCB ***	Std.*	204.3	200.5	186.4	180.3	175.2	167.8	159.3	154.9	150.3	145.5	138.9	115.1	92.0	69.8	47.1	23.6	-	-	-	-	-
WCB ***	Spec.**	206.9	206.9	206.6	204.2	202.3	202.1	200.5	195.7	188.4	173.6	143.9	115.1	87.2	58.8	29.6	-	-	-	-	-	-
WC6 ****	Std.*	206.9	207.0	205.9	199.0	191.9	185.4	171.5	165.3	160.9	155.3	146.5	140.1	135.2	126.7	102.9	59.6	50.8	35.2	24.4	17.1	11.4
WC6 ****	Spec.**	206.9	206.9	206.9	206.9	206.9	206.9	206.9	206.9	205.7	202.0	200.9	198.6	188.6	171.0	128.7	74.5	63.6	44.0	30.6	21.3	14.2
WC9 *****	Std.*	206.9	206.9	206.1	200.7	194.6	185.4	171.5	165.3	160.9	155.3	146.5	140.1	135.2	126.7	112.8	73.8	62.6	42.1	27.6	17.9	11.4
WC9 *****	Spec.**	206.9	206.9	206.5	203.9	200.9	199.9	199.1	198.4	196.8	195.1	195.1	195.1	188.6	171.0	142.9	92.2	78.2	52.7	34.4	22.3	14.2
C12A	Std.*	206.9	206.9	206.1	200.7	194.6	185.4	171.5	165.3	160.9	155.3	146.5	140.1	135.2	126.7	112.8	100.4	99.9	95.8	78.0	58.4	39.7
C12A	Spec.**	206.9	206.9	206.9	206.9	206.9	206.9	206.9	205.7	202.0	200.9	198.6	188.6	171.0	142.9	116.0	116.0	114.4	97.5	73.1	49.7	-

1900 RATING CLASS (ASME B16.34)

ASTM Body mat'l cast	ASME code B16.34	Pressure in bar at temp. °C																				
		-29°																				
		to 38°	50	100	150	200	250	300	325	350	375	400	425	450	475	500	538	550	575	600	625	650
WCB ***	Std.*	323.4	317.4	295.1	285.5	277.4	265.6	252.2	245.2	237.9	230.3	219.9	182.2	145.7	110.4	74.4	37.4	-	-	-	-	-
WCB ***	Spec.**	327.5	327.5	327.0	323.2	320.3	320.0	320.0	317.4	309.8	298.3	274.9	227.7	182.1	138.0	93.1	46.8	-	-	-	-	-
WC6 ****	Std.*	327.5	327.7	326.0	315.0	303.7	293.6	271.5	261.7	254.8	245.7	231.8	221.7	214.1	200.5	162.9	94.3	80.5	55.8	38.7	27.0	18.0
WC6 ****	Spec.**	327.5	327.5	327.5	327.5	327.5	327.5	327.5	327.5	325.7	319.9	318.0	314.4	298.7	270.7	203.7	117.9	100.6	69.7	48.4	33.7	22.4
WC9 *****	Std.*	327.5	327.5	326.3	317.8	308.2	293.6	271.5	261.7	254.8	245.7	231.8	221.7	214.1	200.5	178.5	116.8	99.0	66.6	43.6	28.3	18.0
WC9 *****	Spec.**	327.5	327.5	326.9	322.7	318.1	316.5	315.3	314.1	311.6	308.8	308.8	308.8	298.7	270.7	226.2	146.0	123.7	83.4	54.5	35.3	22.4
C12A	Std.*	327.5	327.5	326.3	317.8	308.2	293.6	271.5	261.7	254.8	245.7	231.8	221.7	214.1	200.5	178.5	158.9	158.1	151.6	123.5	92.5	62.8
C12A	Spec.**	327.5	327.5	327.5	327.5	327.5	327.5	327.5	327.5	325.7	319.9	318.0	314.4	298.7	270.7	226.2	183.7	183.7	181.1	154.4	115.6	78.6

2500 RATING CLASS (ASME B16.34)

ASTM Body mat'l cast	ASME code B16.34	Pressure in bar at temp. °C																				
		-29°																				
		to 38°	50	100	150	200	250	300	325	350	375	400	425	450	475	500	538	550	575	600	625	650
WCB ***	Std.*	425.5	417.7	388.3	375.6	365.0	349.5	331.8	322.6	313.0	303.1	289.3	239.7	191.7	145.3	97.9	49.2	-	-	-	-	-
WCB ***	Spec.**	430.9	430.9	430.3	425.3	421.4	421.1	417.6	407.6	392.5	361.7	299.6	239.6	181.6	122.4	61.6	-	-	-	-	-	-
WC6 ****	Std.*	430.9	430.9	429.0	414.5	399.6	386.2	357.1	344.3	335.3	323.2	304.9	291.6	281.8	263.9	214.4	124.1	105.9	73.4	50.9	35.5	23.6
WC6 ****	Spec.**	430.9	430.9	430.9	430.9	430.9	430.9	430.9	428.6	420.9	418.3	413.7	393.1	356.3	268.0	155.1	132.4	91.7	63.6	44.4	29.5	-
WC9 *****	Std.*	430.9	430.9	429.4	418.2	405.4	386.2	357.1	344.3	335.3	323.2	304.9	291.6	281.8	263.9	235.0	153.7	130.3	87.7	57.4	37.2	23.6
WC9 *****	Spec.**	430.9	430.9	430.2	424.6	418.5	416.5	414.8	413.3	410.0	406.3	406.3	406.3	393.1	356.3	297.5	192.1	162.8	109.7	71.7	46.5	29.5
C12A	Std.*	430.9	430.9	429.4	418.2	405.4	386.2	357.1	344.3	335.3	323.2	304.9	291.6	281.8	263.9	235.0	208.9	208.0	199.5	162.5	121.7	82.7
C12A	Spec.**	430.9	430.9	430.9	430.9	430.9	430.9	430.9	430.9	428.6	420.9	418.3	413.7	393.1	356.3	297.5	241.7	241.7	238.3	203.1	152.1	103.4

2850 RATING CLASS (ASME B16.34)

ASTM Body mat'l cast	ASME code B16.34	Pressure in bar at temp. °C																				
		-29°																				
		to 38°	50	100	150	200	250	300	325	350	375	400	425	450	475	500	538	550	575	600	625	650
WCB ***	Std.*	485.1	476.2	442.7	428.2	416.1	398.4	378.3	367.8	356.8	345.5	329.8	273.3	218.5	165.6	111.6	56.1	-	-	-	-	-
WCB ***	Spec.**	491.2	491.2	490.5	484.8	480.4	480.0	480.0	476.1	464.7	447.5	412.3	341.5	273.2	207.0	139.6	70.2	-	-	-	-	-
WC6 ****	Std.*	491.2	491.2	489.1	472.5	455.6	440.2	407.1	392.5	382.2	368.5	347.5	332.4	321.2	300.8	244.4	141.5	120.7	83.7	58.0	40.5	26.9
WC6 ****	Spec.**	491.2	491.2	491.2	491.2	491.2	491.2	491.2	491.2	488.6	479.8	476.9	471.6	448.1	406.2	305.5	176.8	150.9	104.5	72.5	50.6	33.6
WC9 *****	Std.*	491.2	491.2	489.5	476.8	462.2	440.2	407.1	392.5	382.2	368.5	347.5	332.4	321.2	300.8	267.9	175.2	148.5	100.0	65.4	42.4	26.9
WC9 *****	Spec.**	491.2	491.2	490.4	484.0	477.1	474.8	472.9	471.2	467.4	463.2	463.2	463.2	448.1	406.2	339.1	219.0	185.6	125.0	81.7	53.0	33.6
C12A	Std.*	491.2	491.2	489.5	476.8	462.2	440.2	407.1	392.5	382.2	368.5	347.5	332.4	321.2	300.8	267.9	238.1	237.1	227.4	185.3	138.7	94.3
C12A	Spec.**	491.2	491.2	491.2	491.2	491.2	491.2	491.2	491.2	488.6	479.8	476.9	471.6	448.1	406.2	339.1	275.5	275.5	271.6	231.5	173.4	117.9

NOTE:

* Standard Class according to ASME B16.34

** Special Class according to ASME B16.34

*** WCB Upon exposure to temperatures above 425°C, the carbide phase of steel may be converted to graphite.

Permissible but not recommended for prolonged usage above 425° C.

**** WC6 Not to be used above 595° C.

***** WC9 Permissible but not recommended for prolonged usage above 595° C.

SEPELL PRESSURE SEAL CAST CHECK VALVES -STYLE A

TILTING DISC CONFIGURATION

1000 RATING CLASS (ASME B16.34)

ASTM Body mat'l cast	ASME code B16.34	Pressure in bar at temp. °C (for intermediate ratings use linear interpolation)																		
		-30° to 38°	50	100	150	200	250	300	325	350	375	400	425t	450	475	500	538	550	575	
WCB	Std. *	170.2	167.1	155.3	150.2	146.0	139.8	132.8	129.0	125.2	121.2	115.8	95.9							
WCB	Spec. **	172.4	172.4	172.1	170.1	168.6	168.4	168.4	167.0	163.0	157.0	144.7	119.9							
WC6	Std. *	172.4	172.4	171.6	165.8	159.9	154.5	142.9	137.8	134.1	129.4	122.0	116.8	112.7	105.6	85.8	49.7	42.3	29.3	
WC6	Spec. **	172.4	172.4	172.4	172.4	172.4	172.4	172.4	172.4	171.4	168.3	167.4	165.5	157.1	142.5	107.2	62.0	53.0	36.7	
WC9	Std. *	172.4	172.4	171.8	167.3	162.1	154.5	142.9	137.8	134.1	129.4	122.0	116.8	112.7	105.6	94.1	61.5	52.1	35.1	
WC9	Spec. **	172.4	172.4	172.1	169.9	167.4	166.6	165.9	165.3	164.0	162.6	162.6	162.6	157.1	142.5	119.0	76.8	65.1	43.9	
C12A	Std. *	172.4	172.4	171.8	167.3	162.1	154.5	142.9	137.8	134.1	129.4	122.0	116.8	112.7	105.6	94.1	83.6	83.2	79.8	
C12A	Spec. **	172.4	172.4	172.4	172.4	172.4	172.4	172.4	172.4	171.4	168.3	167.4	165.5	157.1	142.5	119.0	96.6	96.6	95.3	

1690 RATING CLASS (ASME B16.34)

ASTM Body mat'l cast	ASME code B16.34	Pressure in bar at temp. °C (for intermediate ratings use linear interpolation)																		
		-30° to 38°	50	100	150	200	250	300	325	350	375	400	425t	450	475	500	538	550	575	
WCB	Std. *	287.6	282.3	262.5	253.9	246.7	236.3	224.3	218.1	211.6	204.8	195.6	162.0							
WCB	Spec. **	291.3	291.3	290.9	287.5	284.9	284.6	282.3	275.6	265.3	244.5	202.6								
WC6	Std. *	291.3	291.3	290.0	280.2	270.2	261.1	241.5	232.8	226.6	218.6	206.2	197.2	190.4	178.3	144.9	83.9	71.6	49.6	
WC6	Spec. **	291.3	291.3	291.3	291.3	291.3	291.3	291.3	291.3	289.7	284.5	282.9	279.6	265.7	240.8	181.2	104.9	89.5	62.0	
WC9	Std. *	291.3	291.3	290.2	282.6	274.2	261.1	241.5	232.8	226.6	218.6	206.2	197.2	190.4	178.3	158.8	103.9	88.1	59.3	
WC9	Spec. **	291.3	291.3	290.8	287.1	282.9	281.6	280.4	279.4	277.2	274.7	274.7	274.7	265.7	240.8	201.2	129.8	110.1	74.1	
C12A	Std. *	291.3	291.3	290.2	282.6	274.2	261.1	241.5	232.8	226.6	218.6	206.2	197.2	190.4	178.3	158.8	141.3	140.7	134.9	
C12A	Spec. **	291.3	291.3	291.3	291.3	291.3	291.3	291.3	291.3	289.7	284.5	282.9	279.6	265.7	240.8	201.2	163.5	163.5	161.1	

2850 RATING CLASS (ASME B16.34)

Prod. No.	ASTM Body mat'l cast	ASME code B16.34	Pressure in bar at temp. °C (for intermediate ratings use linear interpolation)																	
			-30° to 38°	50	100	150	200	250	300	325	350	375	400	425t	450	475	500	538	550	575
F95	WCB	Std. *	485.1	476.2	442.7	428.2	416.1	398.4	378.3	367.8	356.8	345.5	329.8	273.3						
F95	WCB	Spec. **	491.2	491.2	490.5	484.8	480.4	480.0	476.1	464.7	447.5	412.3	341.5							
F95	WC6	Std. *	491.2	491.2	489.1	472.5	455.6	440.2	407.1	392.5	382.2	368.5	347.5	332.4	321.2	300.8	244.4	141.5	120.7	83.7
F95	WC6	Spec. **	491.2	491.2	491.2	491.2	491.2	491.2	491.2	488.6	479.8	476.9	471.6	448.1	406.2	305.5	176.8	150.9	104.5	
F95	WC9	Std. *	491.2	491.2	489.5	476.8	462.2	440.2	407.1	392.5	382.2	368.3	347.5	332.4	321.2	300.8	267.9	175.2	148.5	100.0
F95	WC9	Spec. **	491.2	491.2	490.4	484.0	477.1	474.8	472.9	471.2	467.4	463.2	463.2	463.2	448.1	406.2	339.1	219.0	185.6	125.0
F95	C12A	Std. *	491.2	491.2	489.5	476.8	462.2	440.2	407.1	392.5	382.2	368.5	347.5	332.4	321.2	300.8	267.9	238.1	237.1	227.4
F95	C12A	Spec. **	491.2	491.2	491.2	491.2	491.2	491.2	491.2	488.6	479.8	476.9	471.6	448.1	406.2	339.1	275.5	275.5	271.6	

NOTES:

Pressure boundary materials to ASTM specifications

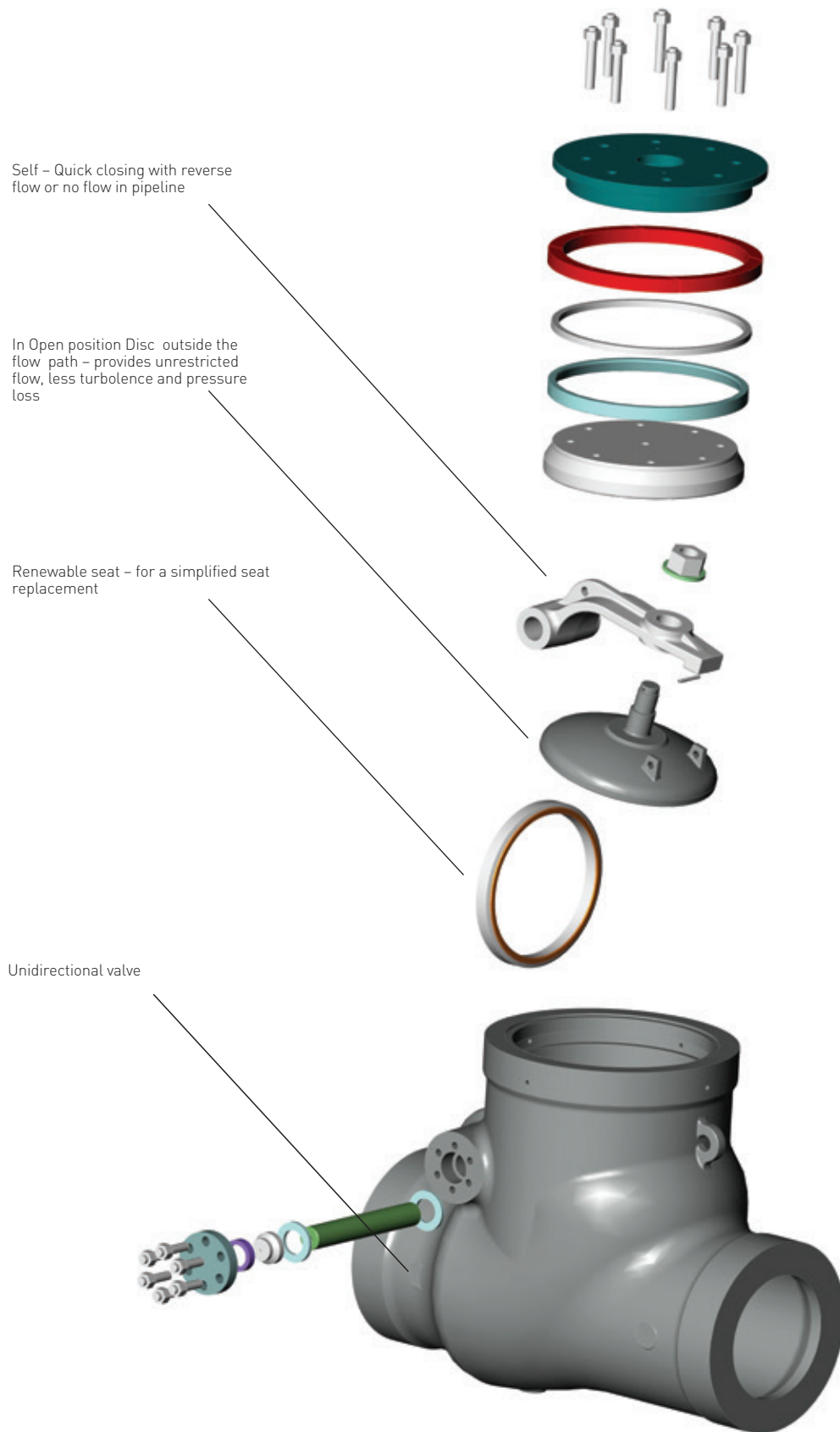
All other materials to stated comparable U.S. specifications

◆ Permissible for WCB but not recommended for prolonged usage above 800°F (425°C).

Std.* ASME B16.34 Standard Class

Spec.** ASME B16.34 Special Class

SEPELL PRESSURE SEAL CAST CHECK VALVES - STYLE A SWING CHECK CONFIGURATION



SEPELL PRESSURE SEAL CAST CHECK VALVES - STYLE A

TILTING DISC CONFIGURATION

Easy to remove cover allows easy access for in-line maintenance

100% graphite high density pressure seal improves as pressure increases

Aerodynamic disk with triple offset seat/disk geometry to provide anti-slam operation

Disk bushes hardened by boronising process for long service life

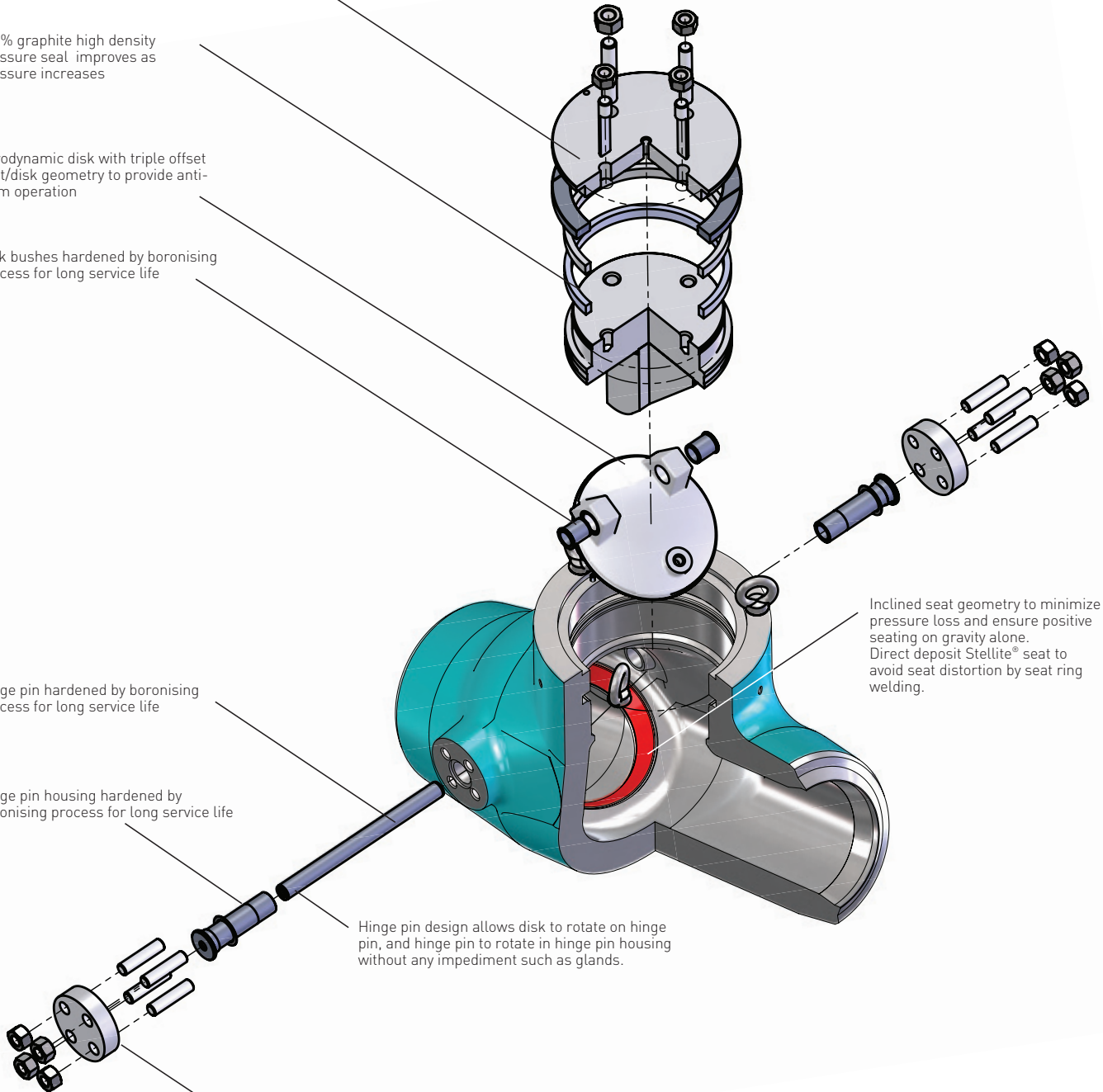
Hinge pin hardened by boronising process for long service life

Hinge pin housing hardened by boronising process for long service life

Hinge pin design allows disk to rotate on hinge pin, and hinge pin to rotate in hinge pin housing without any impediment such as glands.

Hinge Pin cover design removes risk of hinge pin fouling by over-tightening.

Inclined seat geometry to minimize pressure loss and ensure positive seating on gravity alone. Direct deposit Stellite® seat to avoid seat distortion by seat ring welding.



SEPELL PRESSURE SEAL CAST CHECK VALVES -STYLE A

SWING CHECK, TILTING DISC AND PISTON CHECK CONFIGURATION

SWING CHECK VALVE ORDERING GUIDE

Example	6C	0	R	06	30	0	B2	H	N
Valve type									
6C	Swing Check								
7B	Piston Check T								
7D	Piston Check Y								
Valve configuration									
0	Basic								
Valve rating									
E	ASME 900								
F	ASME 1500								
R	ASME 1200								
G	ASME 2500								
S	ASME 1900								
U	ASME 2850								
Nominal valve size									
02	2"	10	10"	20	20"				
25	2½"	AH	10"x8"x10"	BH	20"x18"x20"				
03	3"	12	12"	22	22"				
KB	3"x2"x3"	AL	12"x10"x12"	BL	22"x20"x22"				
04	4"	14	14"	24	24"				
KC	4"x3"x4"	AB	14"x12"x14"	BB	24"x22"x24"				
06	6"	16	16"						
K4	6"x4"x6"	AD	16"x14"x16"						
08	8"	18	18"						
KF	8"x6"x8"	AF	18"x16"x18"						
Body material									
30	ASTM A216 WCB			65	ASTM A351 CF8M				
38	ASTM A217 C12A			73	A352 LCB				
44	ASTM A217 WC6			78	ASTM A494 CW-6MC				
45	ASTM A217 WC9			99	ASTM A890 Gr 5A				
62	ASTM A351 CF8C			XY*	Other material				
Cladding									
0	No Cladding								
2	Sealing Gasket Area F316								
Trim									
B2	13% Cr. + 2 Stellite								
D2	F316 + 2 Stellite								
WZ*	Other material								
Pipe connection									
A	FLANGED PER ASME B16.5								
H	WELD END ASME B16.25								
J	WELD END EN 12267								
K	WELD END ISO 9692								
Standard valve operation									
N	None								

* Other material available upon request.

SEPELL PRESSURE SEAL CAST CHECK VALVES -STYLE A

SWING CHECK, TILTING DISC AND PISTON CHECK CONFIGURATION

TILTING DISC VALVE ORDERING GUIDE

Example:	F	95	E	Z	200	N	F	D	A
Valve type									
F	Check valve								
Pressure class									
67	1000 Class								
73	1690 Class								
95	2850 Class								
Body material									
E	ASTM A216 WCB								
J	ASTM A217 WC6								
L	ASTM A217 WC9								
R	ASTM A217 C12A								
Valve operation									
Z	No external operation								
Nominal Size (mm)									
Design change									
P	Standard design								
Ancillary valve arrangement									
F	No bypass arrangement								
Bypass operation									
D	No bypass arrangement								
Minor product variation									
A									

Neither Emerson, Emerson Automation Solutions, nor any of their affiliated entities assumes responsibility for the selection, use or maintenance of any product. Responsibility for proper selection, use, and maintenance of any product remains solely with the purchaser and end user.

Sempell is a mark owned by one of the companies in the Emerson Automation Solutions business unit of Emerson Electric Co. Emerson Automation Solutions, Emerson and the Emerson logo are trademarks and service marks of Emerson Electric Co. All other marks are the property of their respective owners.

The contents of this publication are presented for informational purposes only, and while every effort has been made to ensure their accuracy, they are not to be construed as warranties or guarantees, express or implied, regarding the products or services described herein or their use or applicability. All sales are governed by our terms and conditions, which are available upon request. We reserve the right to modify or improve the designs or specifications of such products at any time without notice.

Emerson.com/FinalControl