



KEYSTONE FIGURE 419 COMPOSITE HANDLE FOR ISO BUTTERFLY VALVES

A new generation manual operator grip made of a high tech composite material suitable for many butterfly valves with an ISO 5211 top plate



APPLICATIONS

The leverlock Figure 419 handle is suitable for many valves which require manual operators. Typical examples are distribution units and risers in HVAC installations and other applications where pipes are insulated. Material degradation is possible in contact with strong acids, bases and oxidizing environments. Although relatively new in the valve industry, it is broadly used in the automotive industry for construction components.

TECHNICAL DATA

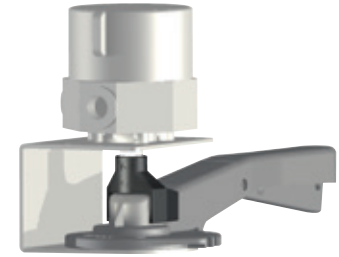
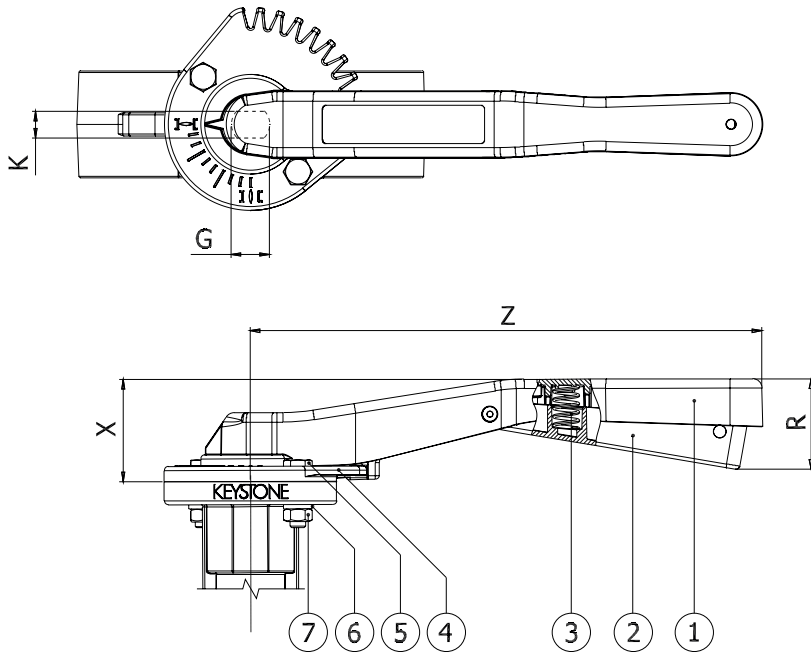
Size range: DN 20 - 150
NPS ¾ - 6

FEATURES

- Solid sturdy design.
- Ergonomic grip ensures efficient and easy operation, even with elevated or low temperature fluids, the handle remains comfortable and eliminates the need for dew point barriers.
- Corrosion resistant material
The new handle is made from a composite material; a mixture of a polymer matrix, reinforced with glass fibers. The material itself is resistant to outdoor environments.
- High strength material and design
Do not confuse this material with ordinary plastics. Composite is a light weight and high strength material. To optimize the material properties in combination with the unique production methods, the handle has been designed with a mosaic of reinforcement bridges which are visible from the bottom side.
- Innovative mounting design by using a bayonet connection between the handle and throttling plate. When the handle is mounted to the valve the bayonet connection is secured by the mounting bolts.
- Raised above insulation piping.
- Can be locked in 10 positions.
- Integrated position indication.
- Clear indication of disc position.
- Provision for padlock device (recommended shackle diameter 6.4 mm [¼"]).
- For parallel flats, shafts and topplate with female recess according ISO 5211
- Axial blocked shaft with throttling plate (blow-out proof).



KEYSTONE FIGURE 419 COMPOSITE HANDLE FOR ISO BUTTERFLY VALVES



Additional composite shaft adaptor is available to simplify mounting switch box.

HANDLE DIMENSIONS mm (inch)

Type	ISO	For sizes DN (NPS)	G	K	R	X	Z	Mass g (oz)
419-D08	F05	20 - 50 (¾ - 2)	12 (0.47)	8 (0.31)	37 (1.46)	40 (1.57)	180 (7.09)	100 (3.53)
419-D25	F07	65 - 100 (2½ - 4)	16 (0.63)	11 (0.43)	50 (1.97)	54 (2.13)	267 (10.51)	260 (9.17)
419-D50	F07	125 - 150 (5 - 6)	20 (0.79)	14 (0.55)	50 (1.97)	54 (2.13)	267 (10.51)	260 (9.17)

PARTS LIST

Part	Name
1	Handle bar
2	Handle lever
3	Spring
4	Throttling plate
5	Screw
6	Spring washer
7	Nut

MAXIMUM OPERATING TORQUE AND FORCE

Handle	Maximum operating force	Torque generated at max. force
	N (kg / lbs)	Nm (ft-lb)
419 - D08	250 (25 / 55)	35 (25.81)
419 - D25	700 (70 / 154)	150 (110.63)
419 - D50	700 (70 / 154)	150 (110.63)

MATERIAL SPECIFICATION FIGURE 419

Part name	Material	EN designation	EN material number	Remarks
Handle bar	Composite			
Handle lever	Composite			
Spring	Stainless steel	X 5 CrNiMo 17 12 2	1.4401	
Throttling plate	Composite			
Screw	Stainless steel	X 5 CrNiMo 17 12 2	1.4401	
Spring washer	Stainless steel	X 5 CrNiMo 17 12 2	1.4401	
Nut	Stainless steel	X 5 CrNiMo 17 12 2	1.4401	

MATERIAL SELECTION FIGURE 419

Handle bar	Handle lever	Throttling plate	Mounting material	Trim number	Sizes DN (NPS)
Composite	Composite	Composite	Stainless steel	542	20 - 150 (¾ - 6)

Neither Emerson, Emerson Automation Solutions, nor any of their affiliated entities assumes responsibility for the selection, use or maintenance of any product. Responsibility for proper selection, use, and maintenance of any product remains solely with the purchaser and end user.

Keystone is a mark owned by one of the companies in the Emerson Automation Solutions business unit of Emerson Electric Co. Emerson Automation Solutions, Emerson and the Emerson logo are trademarks and service marks of Emerson Electric Co. All other marks are the property of their respective owners.

The contents of this publication are presented for informational purposes only, and while every effort has been made to ensure their accuracy, they are not to be construed as warranties or guarantees, express or implied, regarding the products or services described herein or their use or applicability. All sales are governed by our terms and conditions, which are available upon request. We reserve the right to modify or improve the designs or specifications of such products at any time without notice.