

Enardo ES-905-PSO

End-of-Line Stack Vent Valve

Introduction

Enardo™ ES-905-PSO End-of-Line Stack Vent Valves represent the latest development in high-performance, tight sealing tank venting products, and complement the Industry-leading Enardo ES-665 Series Thief Hatch product line. With a leakage rate of no more than 0.1 SCFH at 90% of set point, the Enardo ES-905-PSO offers unparalleled vent valve performance.

Enardo ES-905-PSO End-of-Line Stack Vent Valve is designed to prevent the escape of light ends of crude by maintaining pressure in the storage tank. The end-of-line vent valve is installed directly on the end of the vent line exhaust. The Enardo ES-905-PSO has only pressure relief capability.

The valve opens when the system pressure exceeds the set pressure of the valve. When over pressure occurs, the pallet lifts, breaking the seal between the seat and pallet, allowing vapors to pass through the valve orifice and relieving the pressure buildup. The valve closes once the tank pressure goes below the setting point.

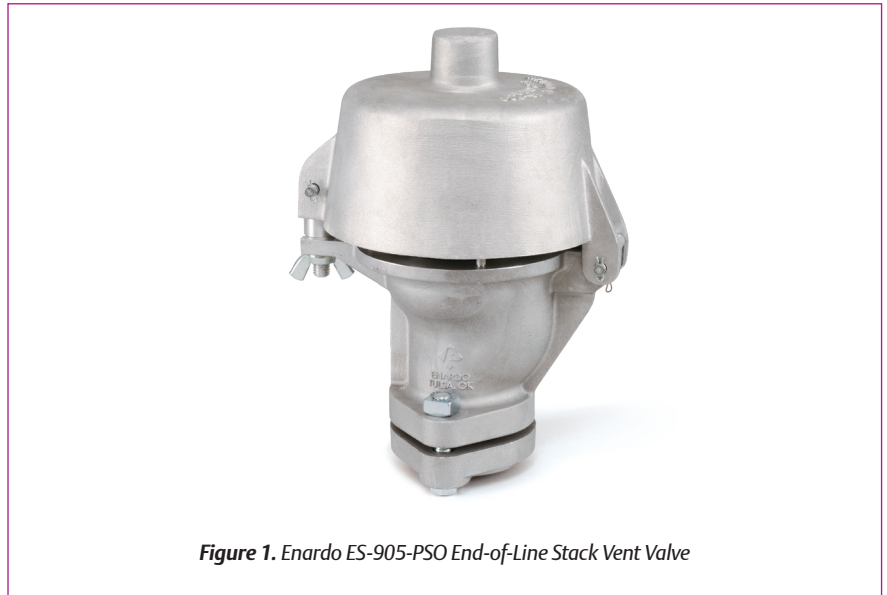
Available Sizes

2 to 4 in. / 50 to 100 mm

Vent Setting Range

Pressure

1.0 to 16.0 oz./sq. in. / 4.3 to 6.90 mbar
(0.5 oz./sq. in. / 2 mbar increments)



Construction Materials

Housing

Cast Aluminum

Pallet

Aluminum

Pressure Seal

Nitrile (NBR) or Fluorocarbon (FKM)

Hardware

Zinc-plated carbon steel

Weight

Zinc-plated carbon steel
(to 12 oz./sq. in.) Lead

Body Gasketing

Nitrile (NBR) or Fluorocarbon (FKM)

Features

- Multiple setting options by adding additional pressure weights
- Fluorocarbon (FKM) gaskets for “Sour Gas” and corrosive service applications
- Non-Corrosive coating option for extremely harsh environments
- Leakage rate of no greater than 0.1 SCFH at 90% of setpoint
- Certified flow capacities in accordance with API
- Tight sealing
- Superior flow

Additional Technical Data

Scan or Click the QR code for more information on this product.

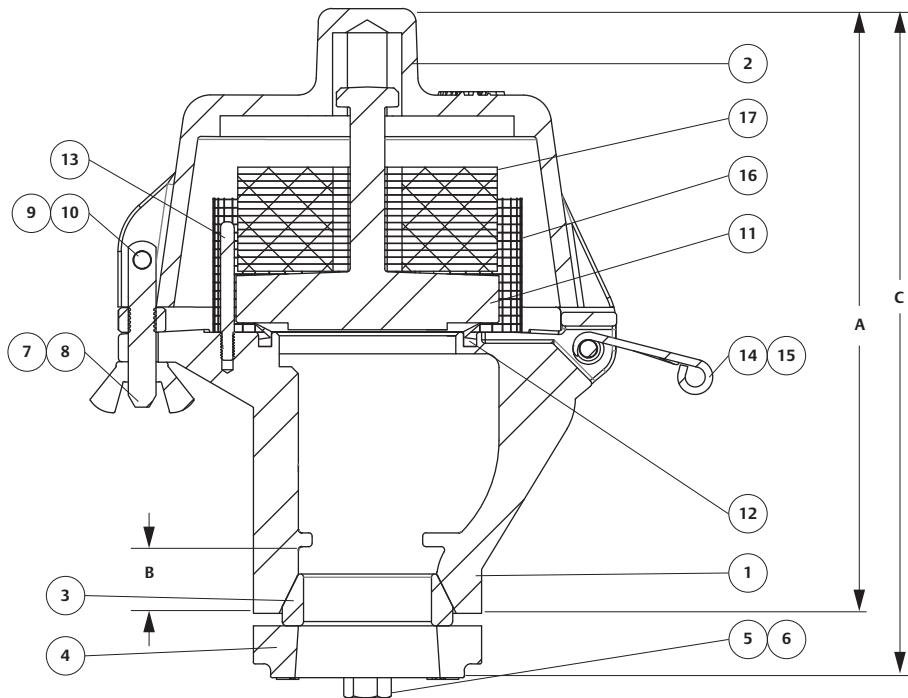
www.Enardo.com



09/23

Enardo ES-905-PSO

End-of-Line Stack Vent Valve



Top lid area is rotated 90°

Figure 2. Enardo™ ES-905-PSO End-of-Line Stack Vent Valve Dimensions

Table 1. Enardo ES-905-PSO End-of-Line Stack Vent Valve Dimensions

MODEL	SIZE		A		B		C, HEIGHT		APPROXIMATE WEIGHT ⁽¹⁾	
	In.	mm	In.	mm	In.	mm	In.	mm	lb	kg
Enardo ES-925-PSO	2	50	10-7/8	276	1-1/4	31.8	12-1/8	308	11	5
Enardo ES-935-PSO	3	80	13	330	1-1/4	31.8	14-5/8	371	15	7
Enardo ES-945-PSO	4	100	14-1/4	362	1-1/4	31.8	15-1/2	394	19	9

1. Unit weights indicate Net Weight of valve in pounds at standard set pressure (1.0 oz./sq. in. pressure - 0.4 oz./sq. in. vacuum), does not include shipping crate or box. Add 20% for gross shipping weight (Domestic Only).

Table 2. Enardo ES-905-PSO End-of-Line Stack Vent Valve Vent Valve

KEY	PART NAME	PART NUMBER		
		2 In.	3 In.	4 In.
1	Valve Body	3514326	3514337	3514341
2	Hood	3514329	3514339	3514343
3	Flange Gasket	3505501	3505502	3505503
4	Slip-on Flange	3508901	3508902	3508903
5	Hex Bolt	2021203	2021200	2021200
6	Square Nut	2021901	2021901	2021901
7	Eyebolt	3505601	3505601	3505601
8	Wing Nut	2001002	2001002	2001002
9	Latch Pin	4505103	4505103	4505103
10	Latch Clip (HPC-148)	2027100	2027100	2027100
11	Pallet	3514268	3514294	3514333
12	V-ring Seal, Nitrile (NBR)	3514286	3514316	3514323
12	V-ring Seal, Fluorocarbon (FKM)	3514313	3514317	3514324
13	Guide Rod	3514344	3514345	3514346
14	Lever	3514350	3514350	3514350
15	Lever Spring	3514351	3514351	3514351
16	Screen	3514330	3514347	3514348
17	Pressure Weight(s)	As required	As required	As required