

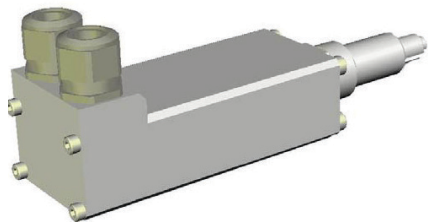
Data Sheet

Sheet No.: DDPI-01 Rev. A

October 2010

DDPI-01

Double position indicators for BHH/BHMF actuators



Description:

The DDPI is designed to fit Bettis valve actuators (apart from LPU/-M) for use within the temperature range from -20° C to +80° C (-4° F to +176° F).

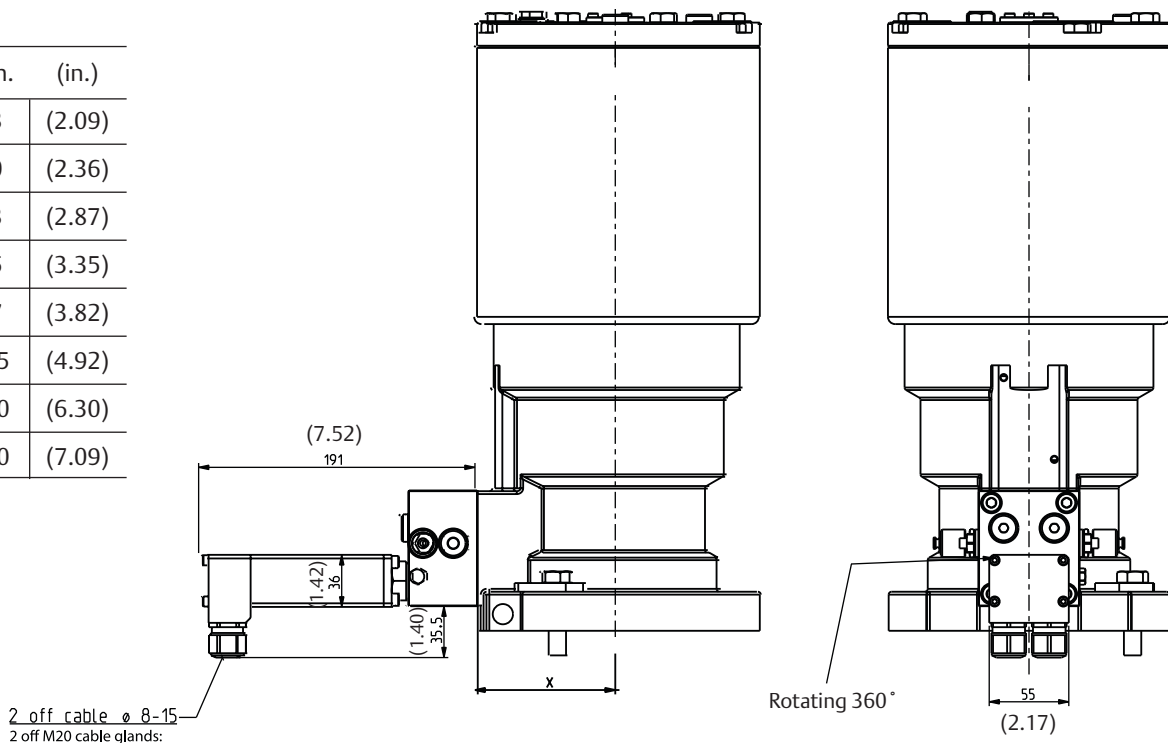
The DDPI range consists of the DDPI-E (ON/OFF/switches), DDPI-E/C (ON/OFF/switches-continuous/potentiometer) and DDPI-C (continuous/potentiometer).

Material and electrical specifications, IP class etc., are all identical with the standard DPI indicators.

For further information about the DDPI, please see separate DPI data sheets.

Dimensions: (Inches in parenthesis)

Distance	X	
BHMF	mm.	(in.)
125	53	(2.09)
250	60	(2.36)
500	73	(2.87)
1000	85	(3.35)
2000	97	(3.82)
4000	125	(4.92)
8000	160	(6.30)
16000	180	(7.09)



Note: Not Certified dimensional drawings. Such drawings are available on request. Contact factory with correct model designation and serial number.
Important: Due to Emerson's continuing commitment to engineered product advancement, data presented herein is subject to change.

The contents of the publication are presented for information purposes only, and while effort has been made to ensure their accuracy, they are not to be construed as warranties or guarantees, expresses or implied, regarding the products or services described herein or their use or applicability. All sales are governed by our terms and conditions, which are available on request. We reserve the right to modify or improve the designs or specifications of our products at any time without notice.

BETTIS


EMERSON

Copyright © Emerson. The information in this document is subject to change without notice. Updated data sheets can be obtained from our website www.emerson.com/bettis or from your Emerson Automation Solutions - Actuation Technologies Center:

America's: +1 281 477 4100 Europe: +36 22 53 0950 Asia/Pacific: +65 67 77 8211 Middle East: +971 4 811 810