

Data sheet

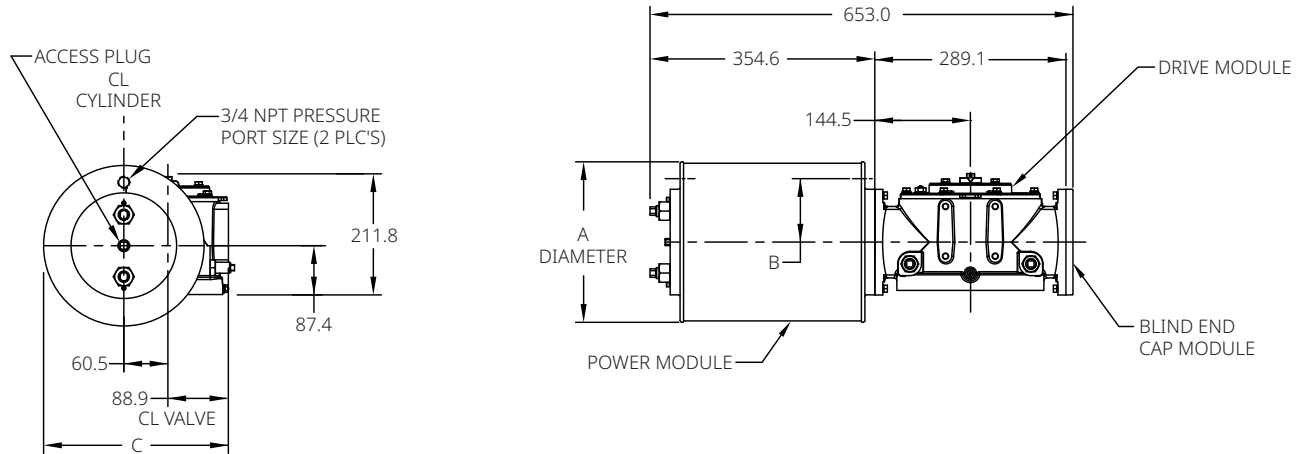
Document No.: VCPDS-13967-EN

Date: January 2024

G/GC-Series

Dimensions – (Pneumatic) mm. G/GC-Series

Double-Acting Actuators G011XX/GC011XX (CW Model Shown)



Notes:

Not Certified dimensional drawings. Such drawings are available on request.
Contact factory with correct model designation and serial number.
All dimensions are expressed in millimeters.

Table 1.

Actuator Model	A	B	C
G01108/GC01108	222.3	81.0	260.4
G01109/GC01109	251.0	96.0	274.8
G01110/GC01110	279.4	111.3	289.1
G01112/GC01112	330.2	127.0	314.5
G01114/GC01114	362.0	139.7	330.2

BETTIS[™]


EMERSON[™]

© 2024 Emerson. The information in this document is subject to change without notice. Updated data sheets can be obtained from our website www.emerson.com/bettis or from your Emerson representative.

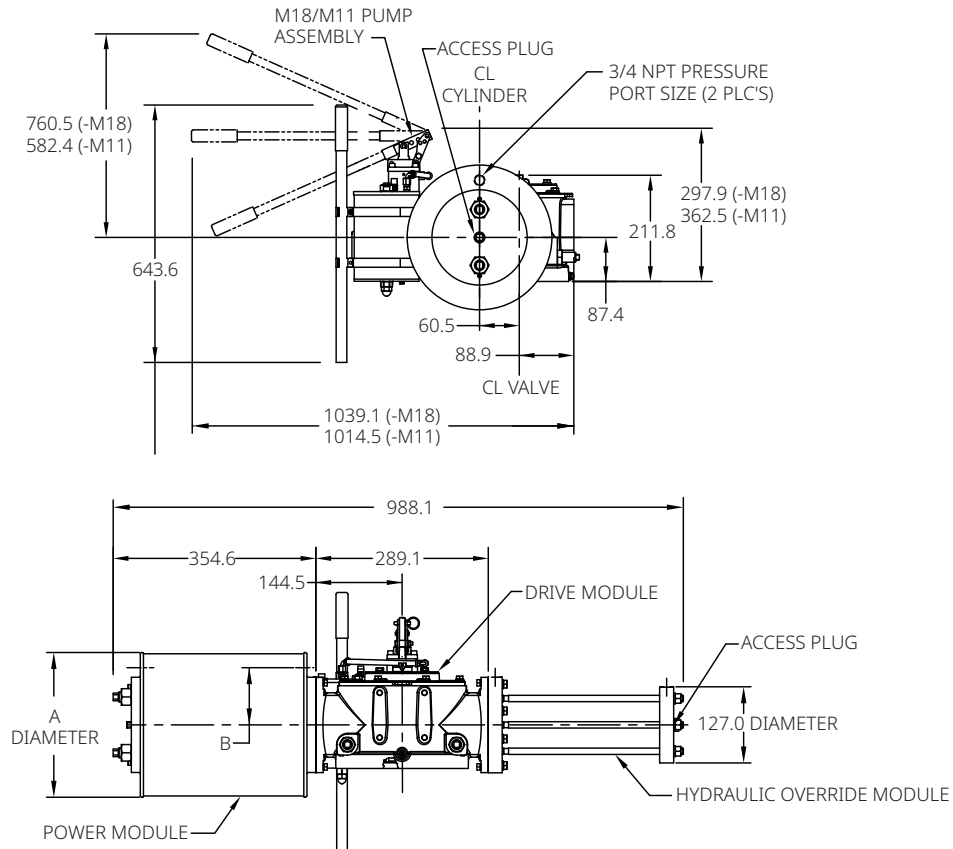
Data sheet

Document No.: VCPDS-13967-EN

Date: January 2024

G/GC-Series

G011XX-M18/GC011XX-M18 G011XX-M11/GC011XX-M11 (CW Model Shown)



Notes:

Not Certified dimensional drawings. Such drawings are available on request.
Contact factory with correct model designation and serial number.
All dimensions are expressed in millimeters.

Table 2.

Actuator Model	A	B
G01108-M18/GC01108-M18	222.3	81.0
G01109-M18/GC01109-M18	251.0	96.0
G01110-M18/GC01110-M18	279.4	111.3
G01112-M18/GC01112-M18	330.2	127.0
G01114-M18/GC01114-M18	362.0	139.7

Note:

Dimensions A and B remain the same in case -M11 in actuator model.

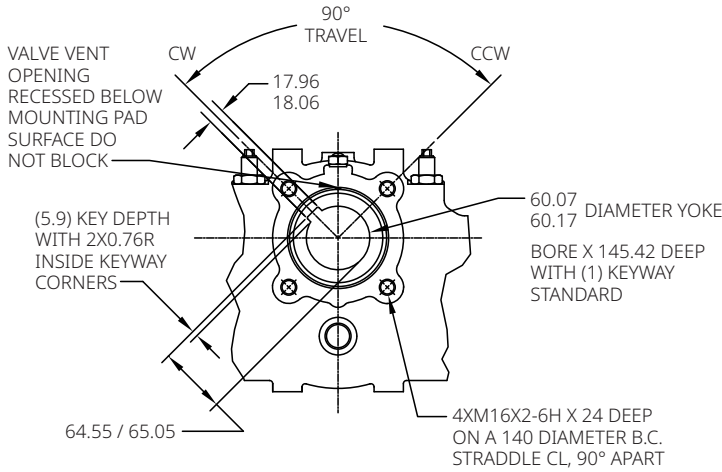
Data sheet

Document No.: VCPDS-13967-EN

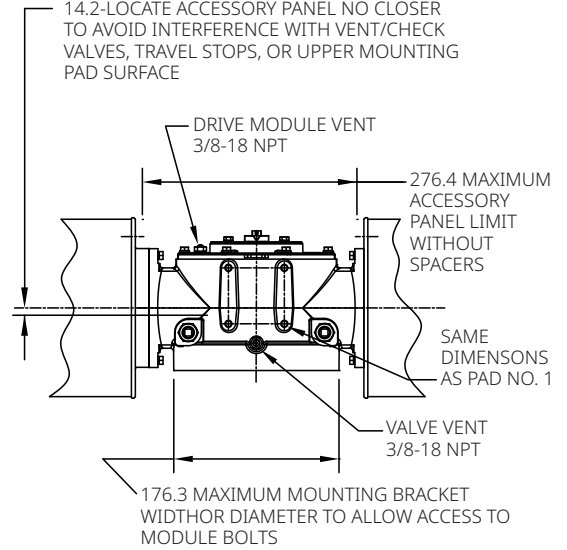
Date: January 2024

G/GC-Series

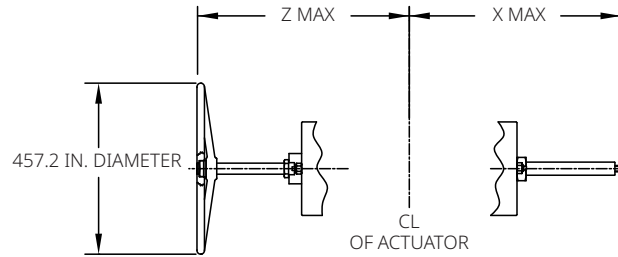
Double-Acting Actuators Mounting Pad Detail



ACCESSORY PAD NO. 2 DETAIL



ADJUSTABLE END STOPS AND JACKSCREWS



Notes:

Not Certified dimensional drawings. Such drawings are available on request.
Contact factory with correct model designation and serial number.
All dimensions are expressed in millimeters.

Table 3.

	Power Module	Blind End Cap Module	Spring Module
X (-ETS) Extended Travel Stop	693.9	402.1	1210.3
X (-33) End Stop	518.4	226.6	1023.9
Z (M3/M3HW) Jackscrew	750.3	442.7	1184.4

BETTIS[™]

EMERSON[™]

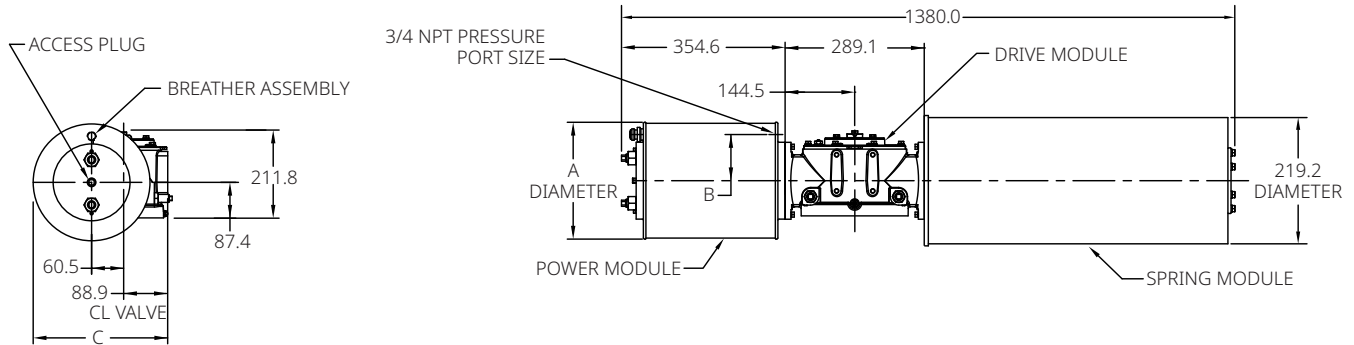
Data sheet

Document No.: VCPDS-13967-EN

Date: January 2024

G/GC-Series

Spring-Return Actuators G011XX-SR/GC011XX-SR (CW Model Shown)



Notes:

Not Certified dimensional drawings. Such drawings are available on request.
Contact factory with correct model designation and serial number.
All dimensions are expressed in millimeters.

Table 4.

Actuator Model	A	B	C
G01108-SR/GC01108-SR	222.3	81.0	260.4
G01109-SR/GC01109-SR	251.0	96.0	274.8
G01110-SR/GC01110-SR	279.4	111.3	289.1
G01112-SR/GC01112-SR	330.2	127.0	314.5
G01114-SR/GC01114-SR	362.0	139.7	330.2

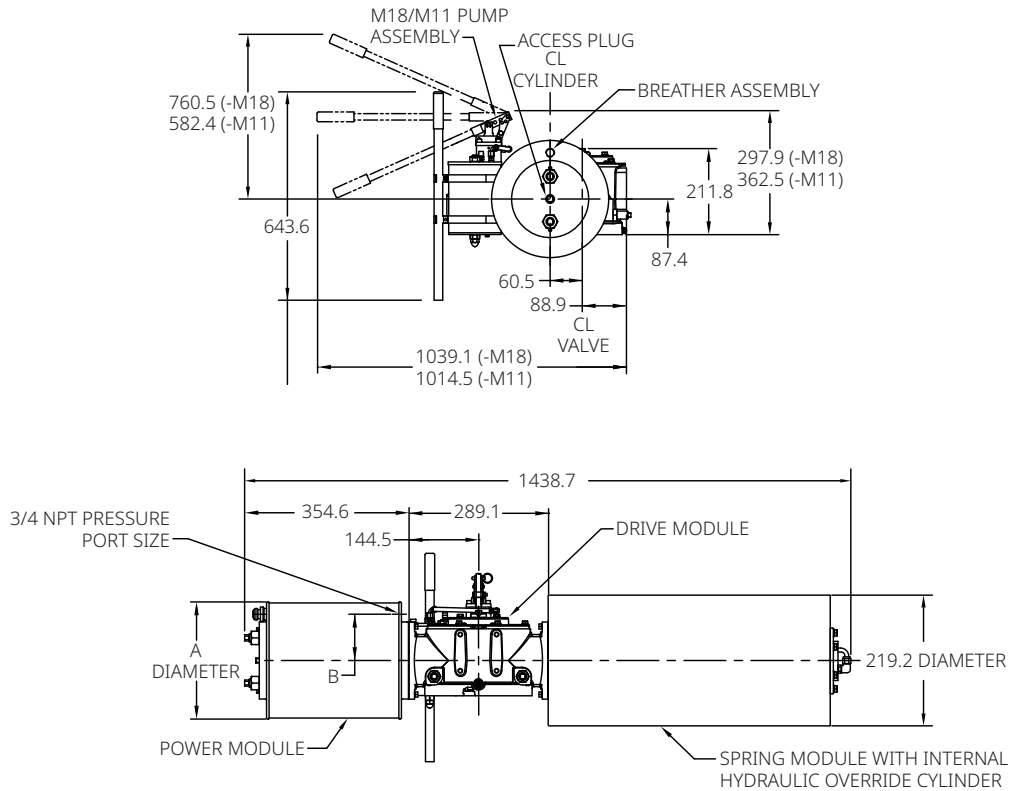
Data sheet

Document No.: VCPDS-13967-EN

Date: January 2024

G/GC-Series

G011XX-SR-M18/GC011XX-SR-M18 G011XX-SR-M11/GC011XX-SR-M11 (CW Model Shown)



Notes:

Not Certified dimensional drawings. Such drawings are available on request.
Contact factory with correct model designation and serial number.
All dimensions are expressed in millimeters.

Table 5.

Actuator Model	A	B
G01108-SR-M18/GC01108-SR-M18	222.3	81.0
G01109-SR-M18/GC01109-SR-M18	251.0	96.0
G01110-SR-M18/GC01110-SR-M18	279.4	111.3
G01112-SR-M18/GC01112-SR-M18	330.2	127.0
G01114-SR-M18/GC01114-SR-M18	362.0	139.7

Note:

Dimensions A and B remain the same in case -M11 in actuator model.

Data sheet

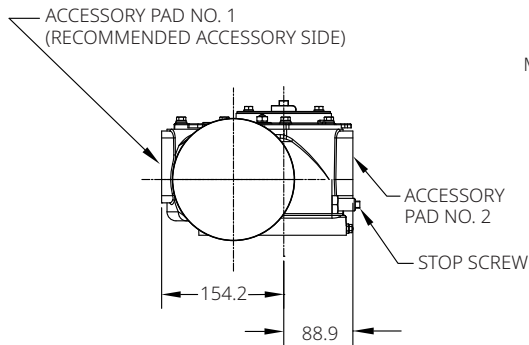
Document No.: VCPDS-13967-EN

Date: January 2024

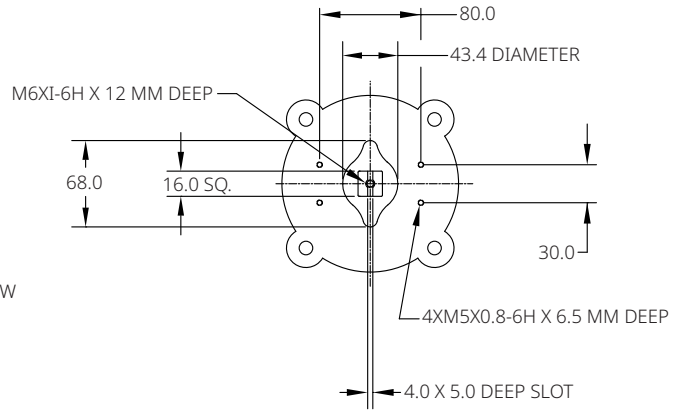
G/GC-Series

Spring-Return Actuators Accessory Details

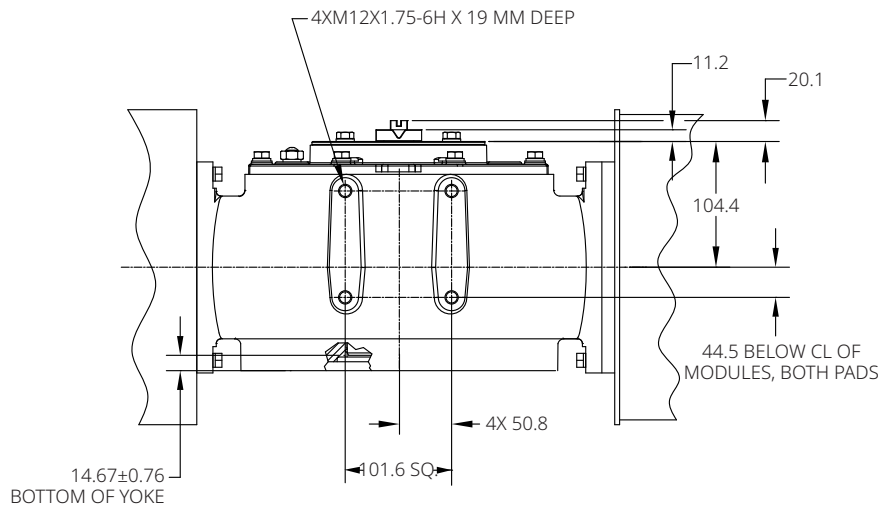
ACCESSORY PAD LOCATION



TOPWORKS DETAIL YOKE COVER



ACCESSORY PAD NO. 1 DETAIL



Notes:

Not Certified dimensional drawings. Such drawings are available on request.
Contact factory with correct model designation and serial number.
All dimensions are expressed in millimeters.

BETTIS[™]


EMERSON[™]

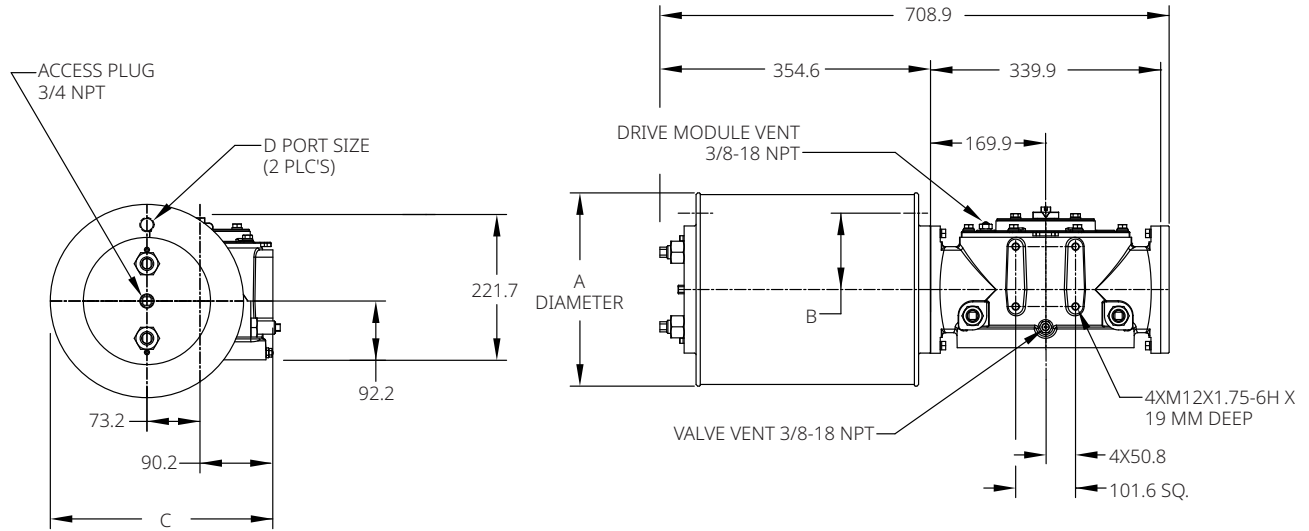
Data sheet

Document No.: VCPDS-13967-EN

Date: January 2024

G/GC-Series

Double-Acting Actuators G21XX/GC21XX (CW Model Shown)



Notes:

Not Certified dimensional drawings. Such drawings are available on request.
Contact factory with correct model designation and serial number.
All dimensions are expressed in millimeters.

Table 6.

Actuator Model	A	B	C	D
G2109/GC2109	251.0	85.9	289.1	3/4 NPT
G2110/GC2110	279.4	111.3	303.0	3/4 NPT
G2112/GC2112	330.2	127.0	328.4	3/4 NPT
G2114/GC2114	362.0	139.7	344.4	3/4 NPT
G2116/GC2116	412.8	158.8	369.8	3/4 NPT

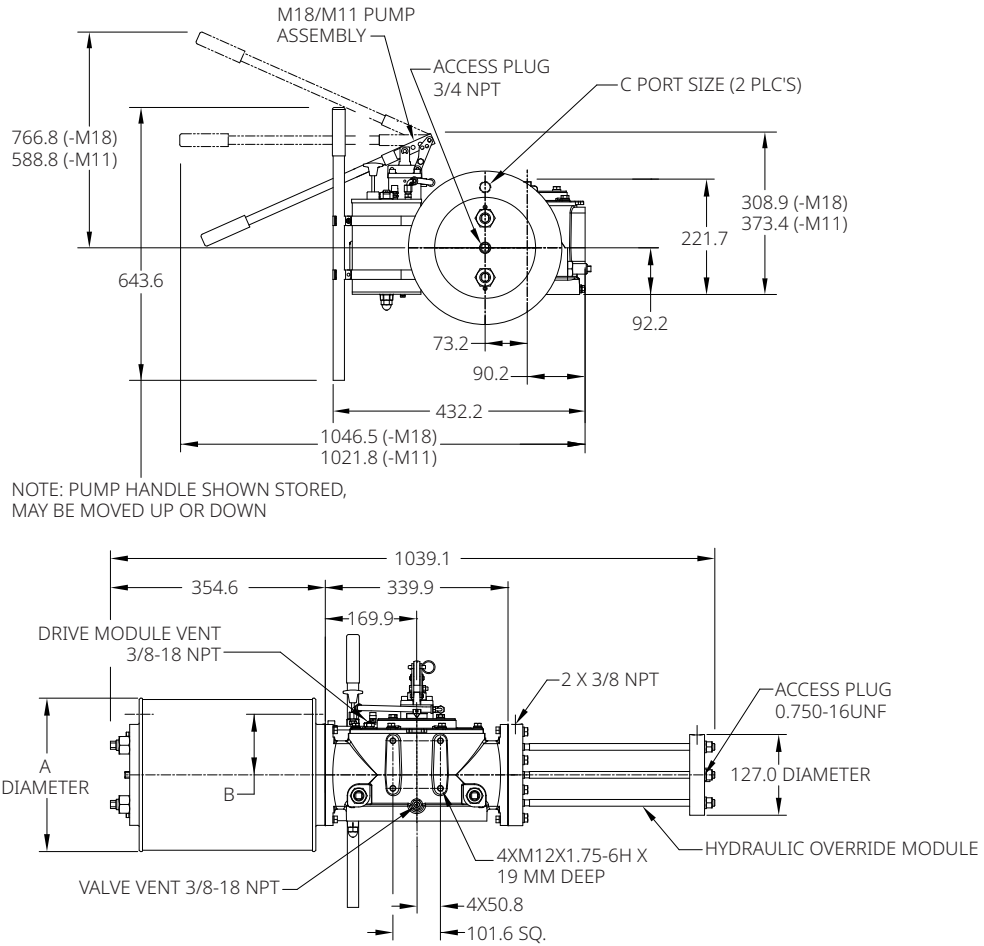
Data sheet

Document No.: VCPDS-13967-EN

Date: January 2024

G/GC-Series

G21XX-M18/GC21XX-M18 G21XX-M11/GC21XX-M11 (CW Model Shown)



NOTE: PUMP HANDLE SHOWN STORED,
MAY BE MOVED UP OR DOWN

Notes:

Not Certified dimensional drawings. Such drawings are available on request.
Contact factory with correct model designation and serial number.
All dimensions are expressed in millimeters.

Table 7.

Actuator Model	A	B	C
G2109-M18/GC2109-M18	251.0	85.9	3/4 NPT
G2110-M18/GC2110-M18	254.0	111.3	3/4 NPT
G2112-M18/GC2112-M18	330.2	127.0	3/4 NPT
G2114-M18/GC2114-M18	362.0	139.7	3/4 NPT
G2116-M18/GC2116-M18	412.8	158.8	3/4 NPT

Note:

Dimensions A, B and C remain the same in case -M11 in actuator model.

BETTIS™

EMERSON™

Data sheet

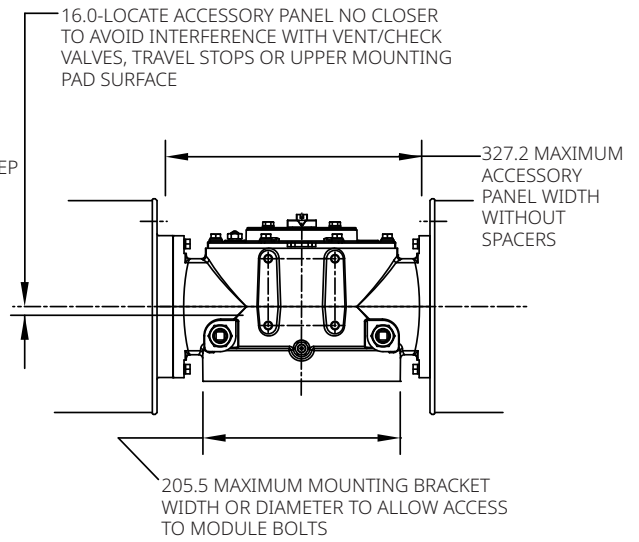
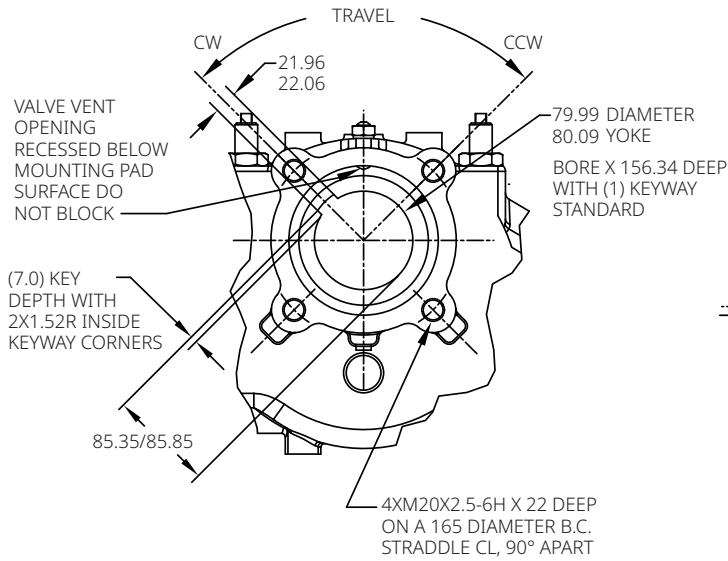
Document No.: VCPDS-13967-EN

Date: January 2024

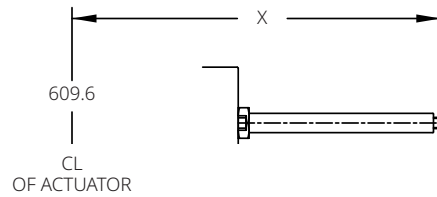
G/GC-Series

Double-Acting Actuators Valve/Accessory Mounting Details

ACCESSORY PAD NO. 2 DETAIL



ADJUSTABLE END STOPS



Notes:

Not Certified dimensional drawings. Such drawings are available on request. Contact factory with correct model designation and serial number. All dimensions are expressed in millimeters.

Table 8.

	X (-ETS) Extended Travel Stop	X End Stop	Z (M3/M3HW) Jackscrew
Power Module	719.3	543.8	890.8
Blind End Cap Module	427.5	252.0	572.8
Spring Module	1224.8	1049.3	1278.9

BETTIS[™]

EMERSON[™]

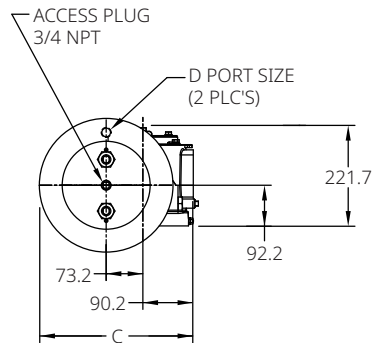
Data sheet

Document No.: VCPDS-13967-EN

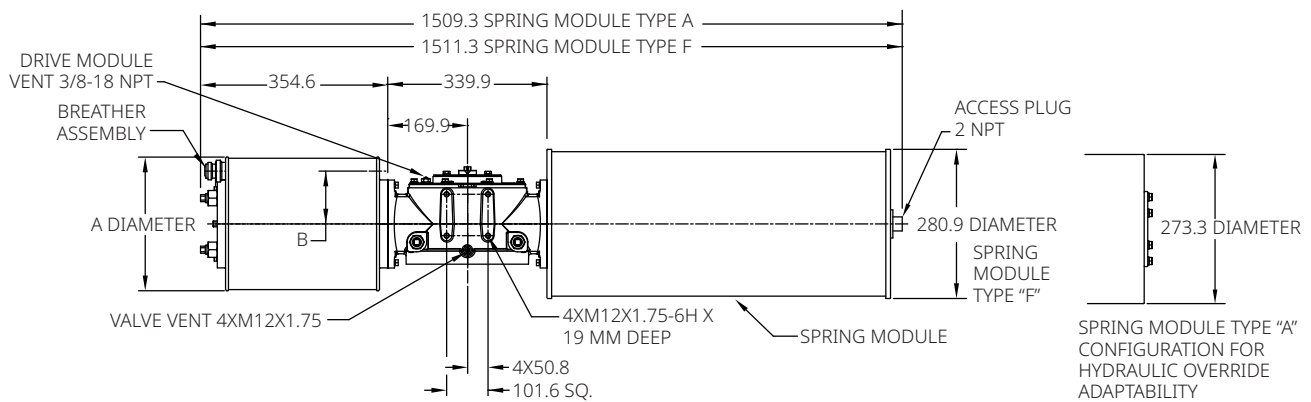
Date: January 2024

G/GC-Series

Spring-Return Actuators G21XX-SR/GC21XX-SR (CW Model Shown)



(DIMENSION REFLECTS LARGEST OF EITHER CYLINDER)



SPRING MODULE TYPE "A" CONFIGURATION FOR HYDRAULIC OVERRIDE ADAPTABILITY

Notes:

Not Certified dimensional drawings. Such drawings are available on request.
Contact factory with correct model designation and serial number.
All dimensions are expressed in millimeters.

Table 9.

Actuator Model	A	B	C	D
G2109-SR/GC2109-SR	251.0	85.9	304.0	3/4 NPT
G2110-SR/GC2110-SR	279.4	111.3	304.0	3/4 NPT
G2112-SR/GC2112-SR	330.2	127.0	328.4	3/4 NPT
G2114-SR/GC2114-SR	362.0	139.7	344.4	3/4 NPT
G2116-SR/GC2116-SR	412.8	158.8	369.8	3/4 NPT

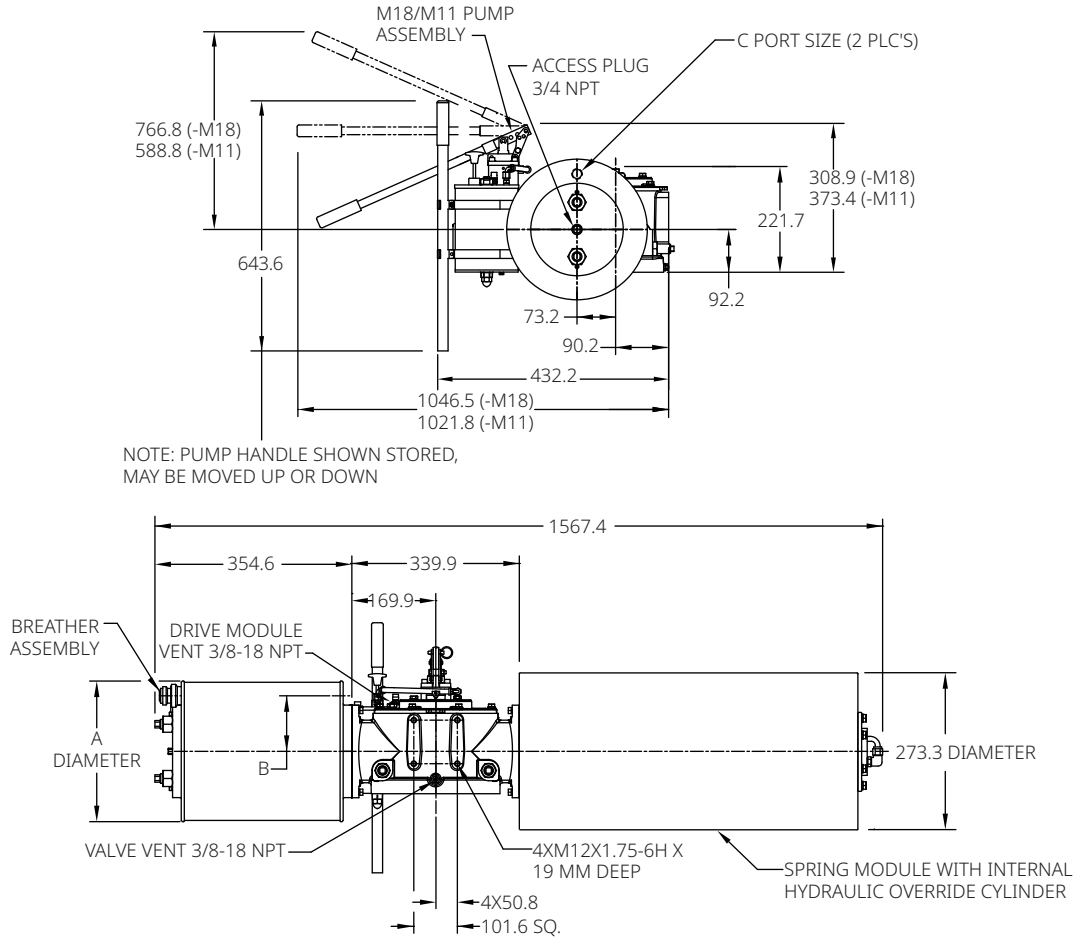
Data sheet

Document No.: VCPDS-13967-EN

Date: January 2024

G/GC-Series

G21XX-SR-M18/GC21XX-SR-M18 G21XX-SR-M11/GC21XX-SR-M11 (CW Model Shown)



Notes:

Not Certified dimensional drawings. Such drawings are available on request.
Contact factory with correct model designation and serial number.
All dimensions are expressed in millimeters.

Table 10.

Actuator Model	A	B	C
G2109-SR-M18/GC2109-SR-M18	251.0	85.9	3/4 NPT
G2110-SR-M18/GC2110-SR-M18	254.0	111.3	3/4 NPT
G2112-SR-M18/GC2112-SR-M18	330.2	127.0	3/4 NPT
G2114-SR-M18/GC2114-SR-M18	362.0	139.7	3/4 NPT
G2116-SR-M18/GC2116-SR-M18	412.8	158.8	3/4 NPT

Note:

Dimensions A, B and C remain the same in case -M11 in actuator model.



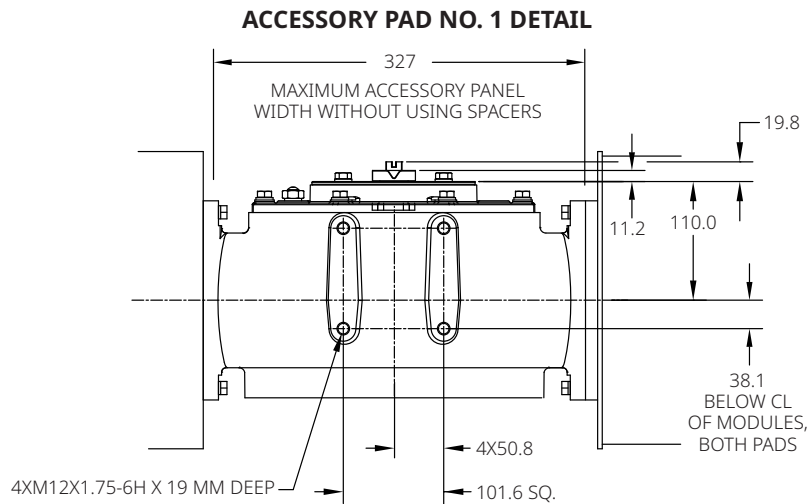
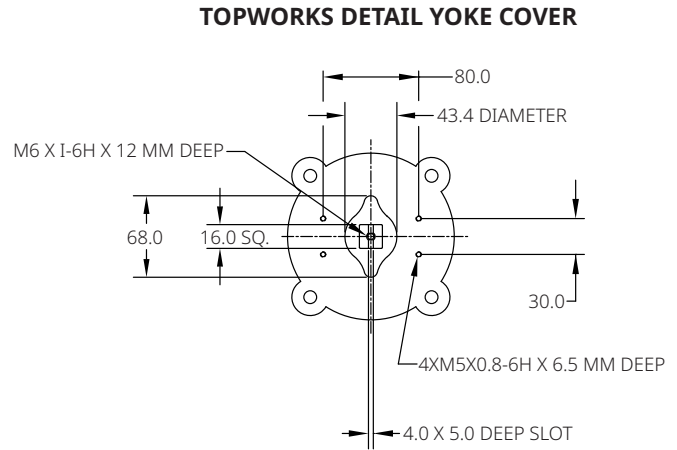
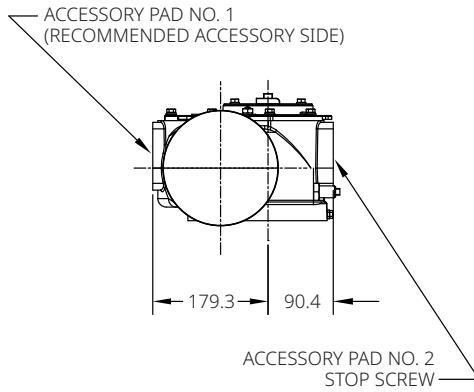
Data sheet

Document No.: VCPDS-13967-EN

Date: January 2024

G/GC-Series

Spring-Return Actuators Accessory Details



Notes:

Not Certified dimensional drawings. Such drawings are available on request.
Contact factory with correct model designation and serial number.
All dimensions are expressed in millimeters.

BETTIS[™]


EMERSON[™]

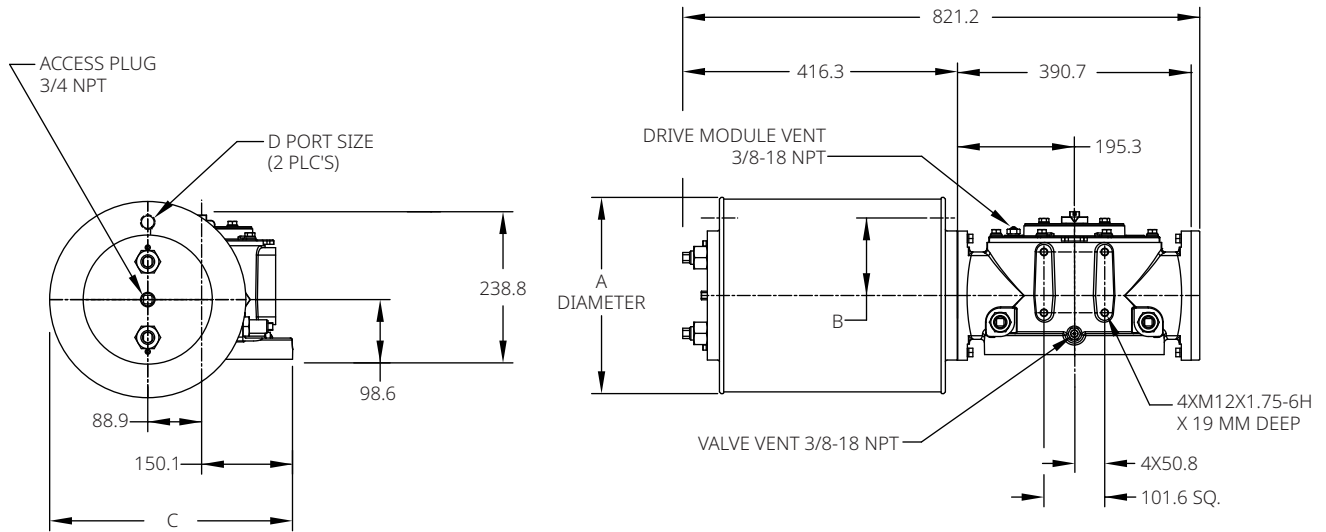
Data sheet

Document No.: VCPDS-13967-EN

Date: January 2024

G/GC-Series

Double-Acting Actuators G31XX/GC31XX (CW Model Shown)



Notes:

Not Certified dimensional drawings. Such drawings are available on request.
Contact factory with correct model designation and serial number.
All dimensions are expressed in millimeters.

Table 11.

Actuator Model	A	B	C	D
G3110/GC3110	279.4	111.3	378.7	3/4 NPT
G3112/GC3112	330.2	131.8	404.1	3/4 NPT
G3114/GC3114	362.0	144.3	419.9	3/4 NPT
G3116/GC3116	412.8	158.8	445.3	3/4 NPT
G3120/GC3120	514.4	203.2	496.1	3/4 NPT

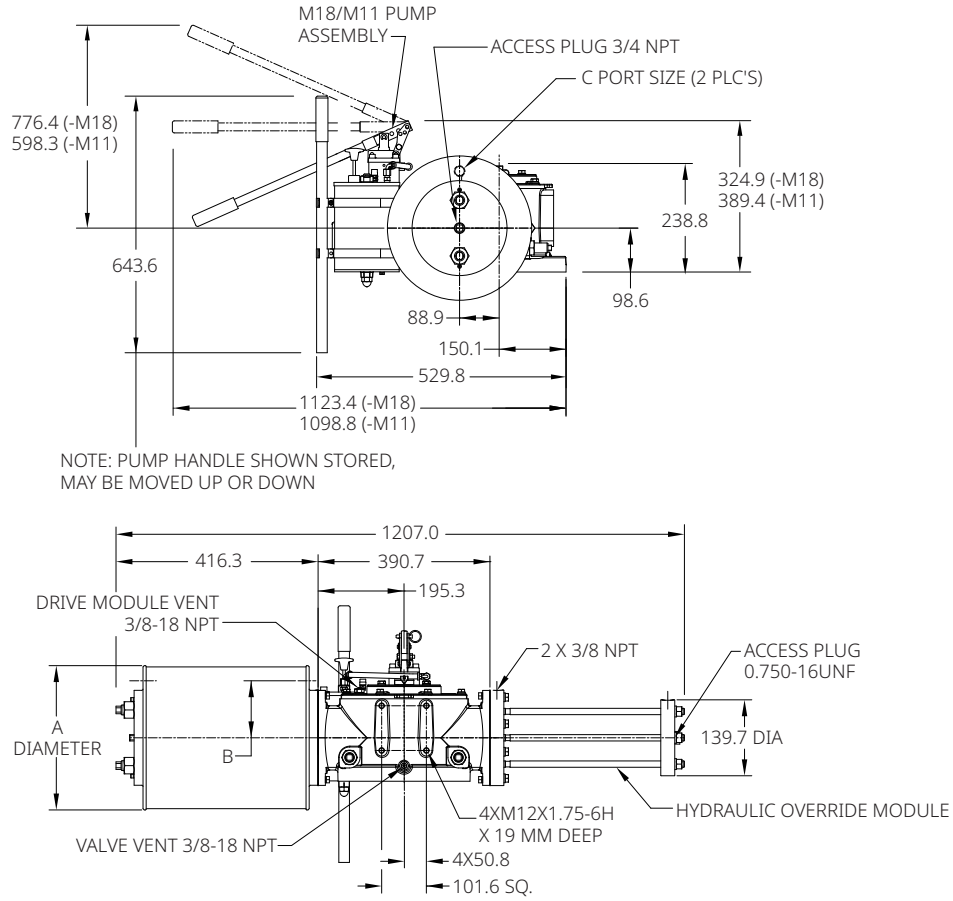
Data sheet

Document No.: VCPDS-13967-EN

Date: January 2024

G/GC-Series

G31XX-M18/GC31XX-M18 G31XX-M11/GC31XX-M11 (CW Model Shown)



NOTE: PUMP HANDLE SHOWN STORED,
MAY BE MOVED UP OR DOWN

Notes:

Not Certified dimensional drawings. Such drawings are available on request.
Contact factory with correct model designation and serial number.
All dimensions are expressed in millimeters.

Table 12.

Actuator Model	A	B	C
G3110-M18/GC3110-M18	279.4	111.3	3/4 NPT
G3112-M18/GC3112-M18	330.2	131.8	3/4 NPT
G3114-M18/GC3114-M18	362.0	144.3	3/4 NPT
G3116-M18/GC3116-M18	412.8	158.8	3/4 NPT
G3120-M18/GC3120-M18	514.4	203.2	3/4 NPT

Note:

Dimensions A, B and C remain the same in case -M11 in actuator model.

BETTIS™

EMERSON™

Data sheet

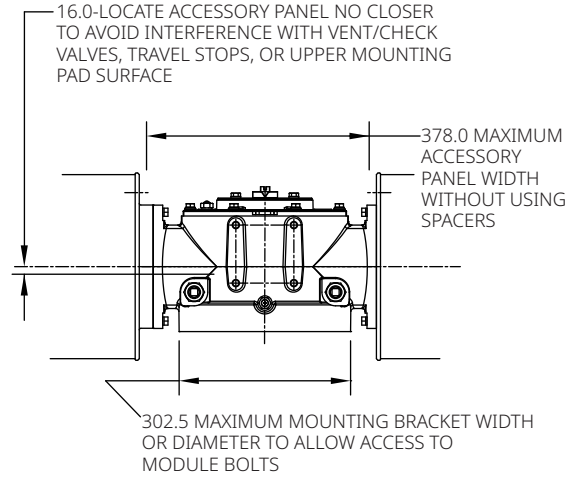
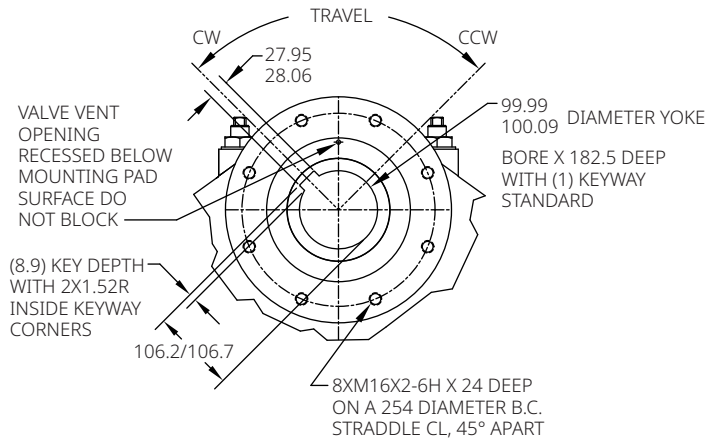
Document No.: VCPDS-13967-EN

Date: January 2024

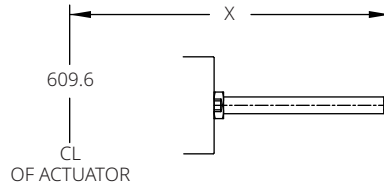
G/GC-Series

Double-Acting Actuators Valve/Accessory Mounting Details

ACCESSORY PAD NO. 2 DETAIL



ADJUSTABLE END STOPS



Notes:

Not Certified dimensional drawings. Such drawings are available on request.
Contact factory with correct model designation and serial number.
All dimensions are expressed in millimeters.

Table 13.

	X (-ETS) Extended Travel Stop	X End Stop	Z (M3/M3HW) Jackscrew
Power Module	840.5	623.1	938.3
Blind End Cap Module	497.1	281.9	580.6
Spring Module	1353.8	1136.4	1397.0

BETTIS[™]

EMERSON[™]

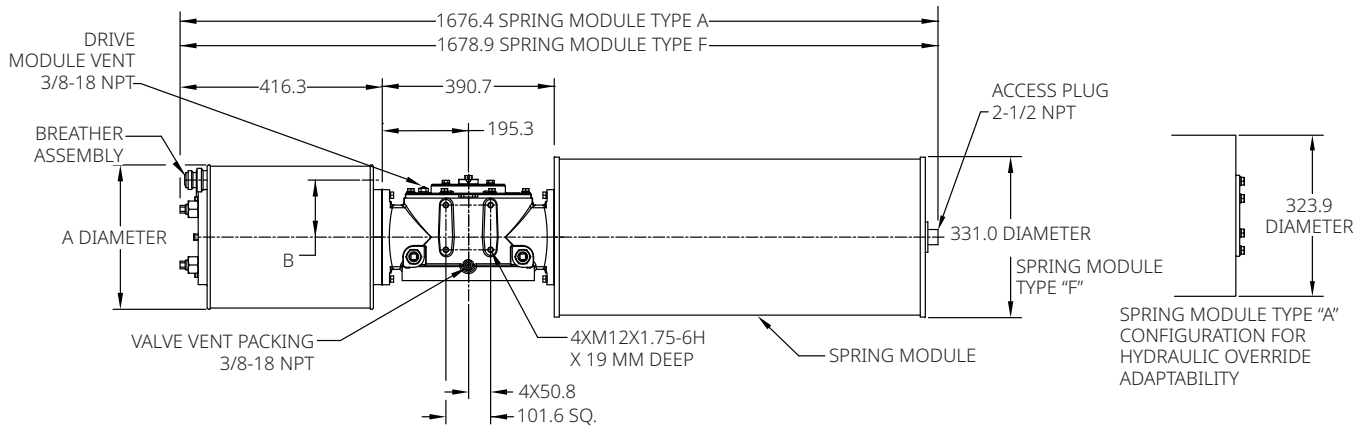
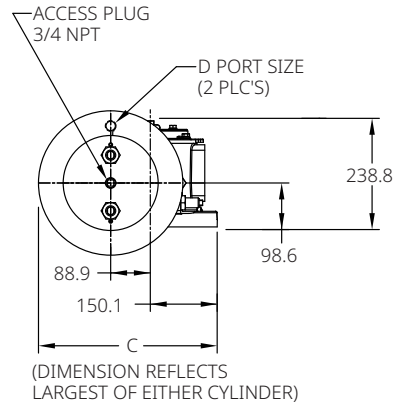
Data sheet

Document No.: VCPDS-13967-EN

Date: January 2024

G/GC-Series

Spring-Return Actuators G31XX-SR/GC31XX-SR (CW Model Shown)



Notes:

Not Certified dimensional drawings. Such drawings are available on request.
Contact factory with correct model designation and serial number.
All dimensions are expressed in millimeters.

Table 14.

Actuator Model	A	B	C	D
G3110-SR/GC3110-SR	279.4	111.3	399.5	3/4 NPT
G3112-SR/GC3112-SR	330.2	131.8	404.1	3/4 NPT
G3114-SR/GC3114-SR	362.0	144.3	419.9	3/4 NPT
G3116-SR/GC3116-SR	412.8	158.8	445.3	3/4 NPT
G3120-SR/GC3120-SR	514.4	203.2	496.1	3/4 NPT

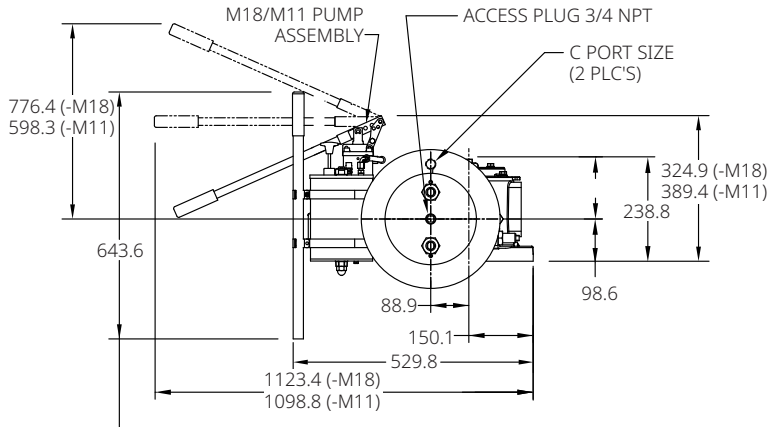
Data sheet

Document No.: VCPDS-13967-EN

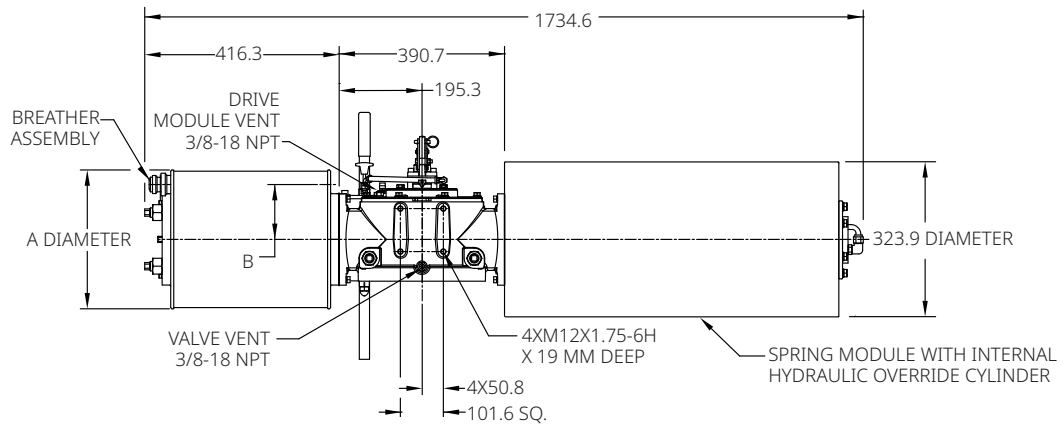
Date: January 2024

G/GC-Series

G31XX-SR-M18/GC31XX-SR-M18 G31XX-SR-M11/GC31XX-SR-M11 (CW Model Shown)



NOTE: PUMP HANDLE SHOWN STORED, MAY BE MOVED UP OR DOWN



Notes:

Not Certified dimensional drawings. Such drawings are available on request. Contact factory with correct model designation and serial number. All dimensions are expressed in millimeters.

Table 15.

Actuator Model	A	B	C
G3110-SR-M18/GC3110-SR-M18	279.4	111.3	3/4 NPT
G3112-SR-M18/GC3112-SR-M18	330.2	131.8	3/4 NPT
G3114-SR-M18/GC3114-SR-M18	362.0	144.3	3/4 NPT
G3116-SR-M18/GC3116-SR-M18	412.8	158.8	3/4 NPT
G3120-SR-M18/GC3120-SR-M18	514.4	203.2	3/4 NPT

Note:

Dimensions A, B and C remain the same in case -M11 in actuator model.

BETTIS™

EMERSON™

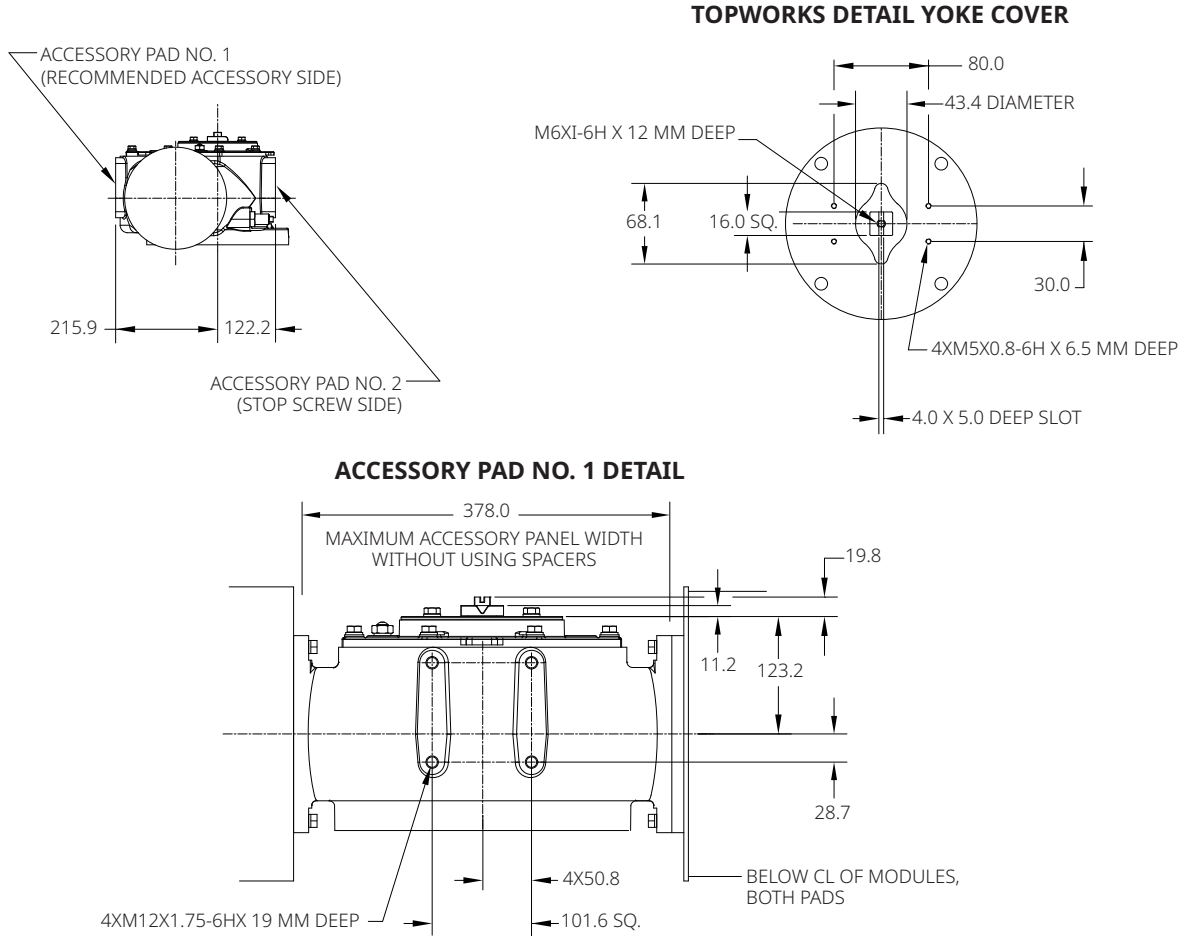
Data sheet

Document No.: VCPDS-13967-EN

Date: January 2024

G/GC-Series

Spring-Return Actuators Accessory Details



Notes:

Not Certified dimensional drawings. Such drawings are available on request.
Contact factory with correct model designation and serial number.
All dimensions are expressed in millimeters.

BETTIS™



EMERSON™

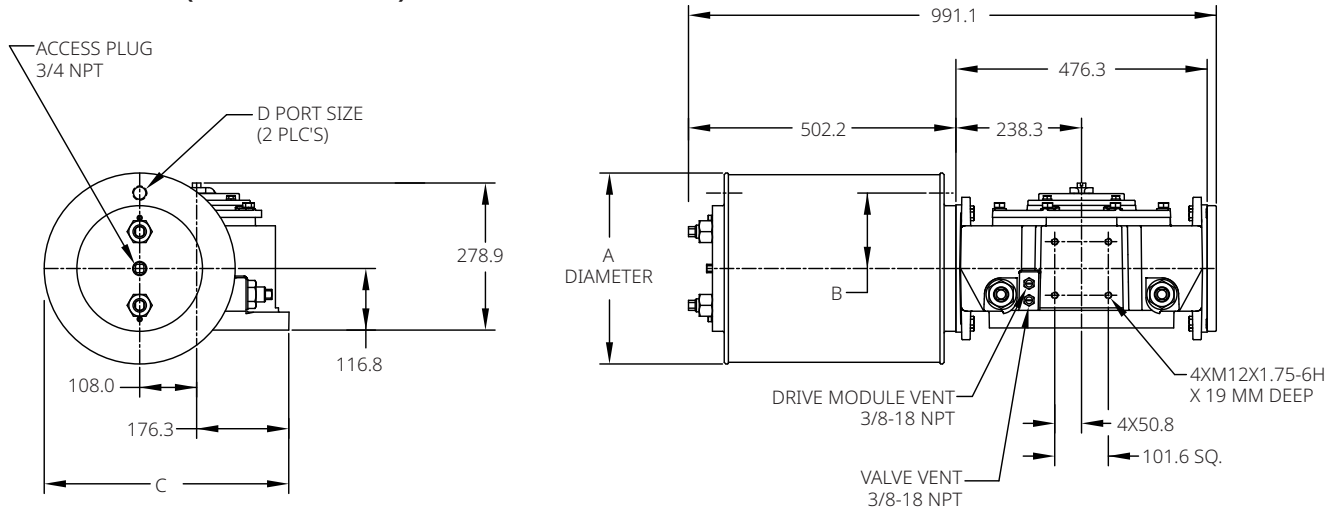
Data sheet

Document No.: VCPDS-13967-EN

Date: January 2024

G/GC-Series

Double-Acting Actuators G41XX/GC41XX (CW Model Shown)



Notes:

Not Certified dimensional drawings. Such drawings are available on request.
Contact factory with correct model designation and serial number.
All dimensions are expressed in millimeters.

Table 16.

Actuator Model	A	B	C	D
G4112/GC4112	330.2	138.2	449.3	3/4 NPT
G4114/GC4114	362.0	143.0	465.3	3/4 NPT
G4116/GC4116	412.8	158.8	490.7	3/4 NPT
G4120/GC4120	514.4	206.5	541.5	3/4 NPT
G4124/GC4124	616.0	244.6	592.3	3/4 NPT
G4128/GC4128	736.6	292.1	652.5	1.0 NPT

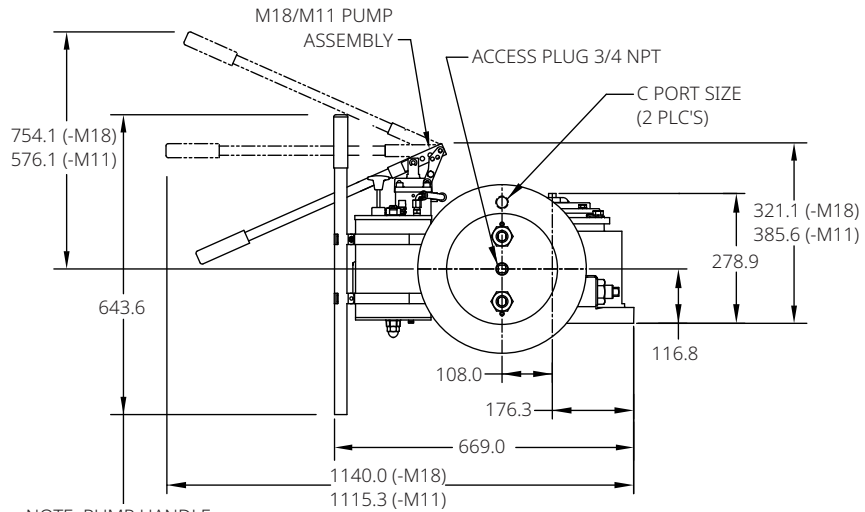
Data sheet

Document No.: VCPDS-13967-EN

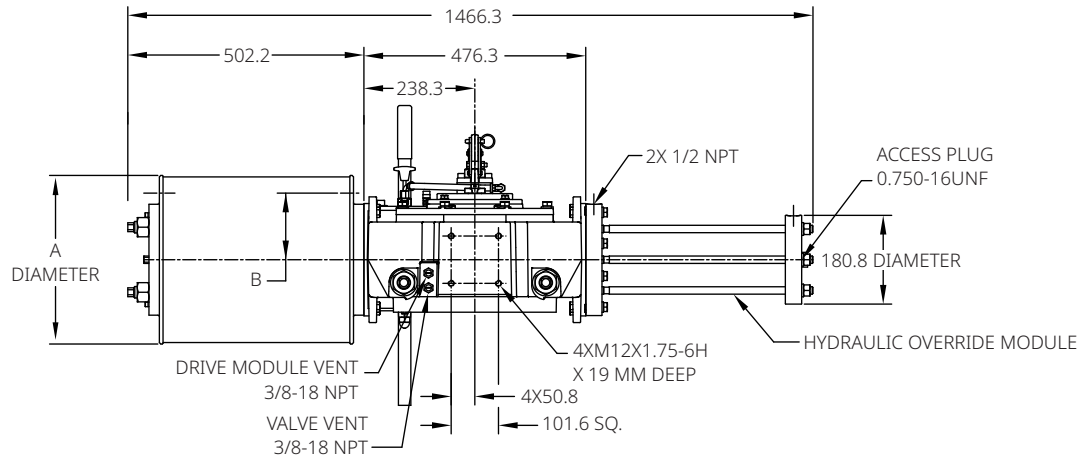
Date: January 2024

G/GC-Series

Double-Acting Actuators G41XX/GC41XX (CW Model Shown)



NOTE: PUMP HANDLE SHOWN STORED, MAY BE MOVED UP OR DOWN.



Notes:

Not Certified dimensional drawings. Such drawings are available on request.

Contact factory with correct model designation and serial number.

All dimensions are expressed in millimeters.

Table 17.

Actuator Model	A	B	C
G4112-M18/GC4112-M18	330.2	138.2	3/4 NPT
G4114-M18/GC4114-M18	362.0	143.0	3/4 NPT
G4116-M18/GC4116-M18	412.8	158.8	3/4 NPT
G4120-M18/GC4120-M18	514.4	206.5	3/4 NPT
G4124-M18/GC4124-M18	616.0	244.6	3/4 NPT
G4128-M18/GC4128-M18	736.6	292.1	1.0 NPT

Note:

Dimensions A, B and C remain the same in case -M11 in actuator model.

BETTIS™

EMERSON™

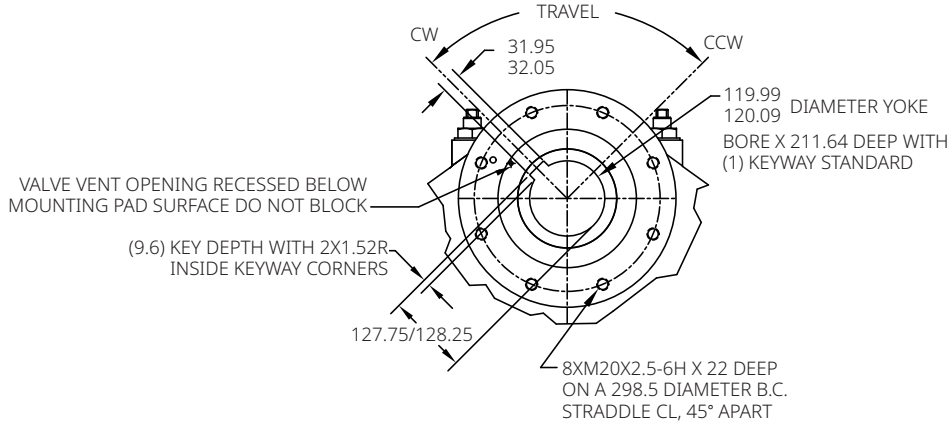
Data sheet

Document No.: VCPDS-13967-EN

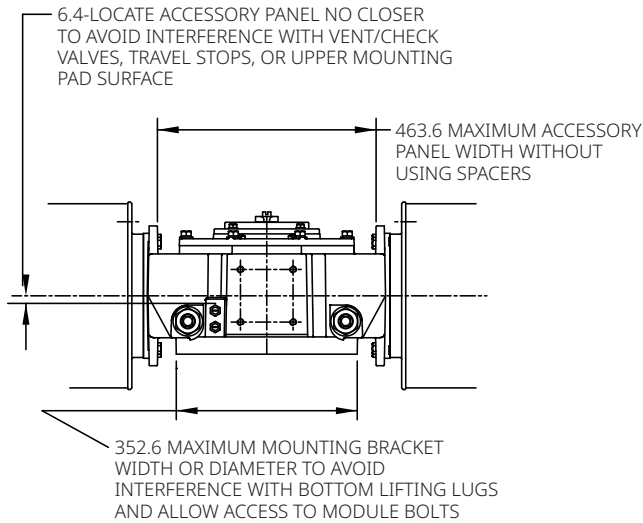
Date: January 2024

G/GC-Series

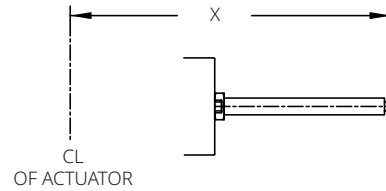
Double-Acting Actuators Valve/Accessory Mounting Details



ACCESSORY PAD NO. 2 DETAIL



ADJUSTABLE END STOPS



Notes:

Not Certified dimensional drawings. Such drawings are available on request. Contact factory with correct model designation and serial number. All dimensions are expressed in millimeters.

Table 18.

	X Extended Travel Stop	X End Stop
Power Module	1009.4	790.4
Blind End Cap Module	592.3	373.4
Spring Module	1539.5	1263.7

BETTIS™

© 2024 Emerson. The information in this document is subject to change without notice. Updated data sheets can be obtained from our website www.emerson.com/bettis or from your Emerson representative.


EMERSON™

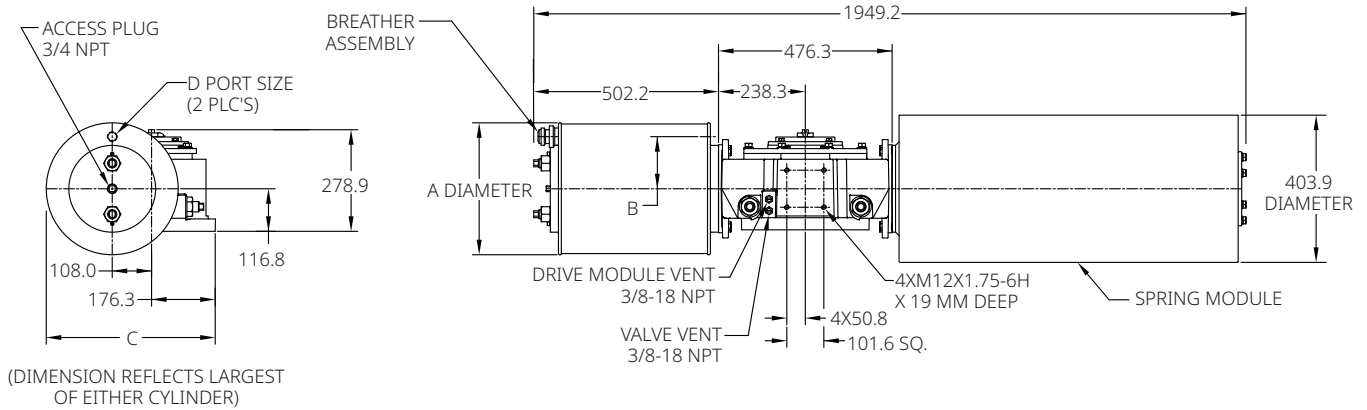
Data sheet

Document No.: VCPDS-13967-EN

Date: January 2024

G/GC-Series

Spring-Return Actuators G41XX-SR/GC41XX-SR (CW Model Shown)



Notes:

Not Certified dimensional drawings. Such drawings are available on request. Contact factory with correct model designation and serial number. All dimensions are expressed in millimeters.

Table 19.

Actuator Model	A	B	C	D
G4112-SR/GC4112-SR	330.2	138.2	486.2	3/4 NPT
G4114-SR/GC4114-SR	362.0	143.0	486.2	3/4 NPT
G4116-SR/GC4116-SR	412.8	158.8	490.7	3/4 NPT
G4120-SR/GC4120-SR	514.4	206.5	541.5	3/4 NPT
G4124-SR/GC4124-SR	616.0	244.6	592.3	3/4 NPT
G4128-SR/GC4128-SR	736.6	292.1	652.5	1.0 NPT

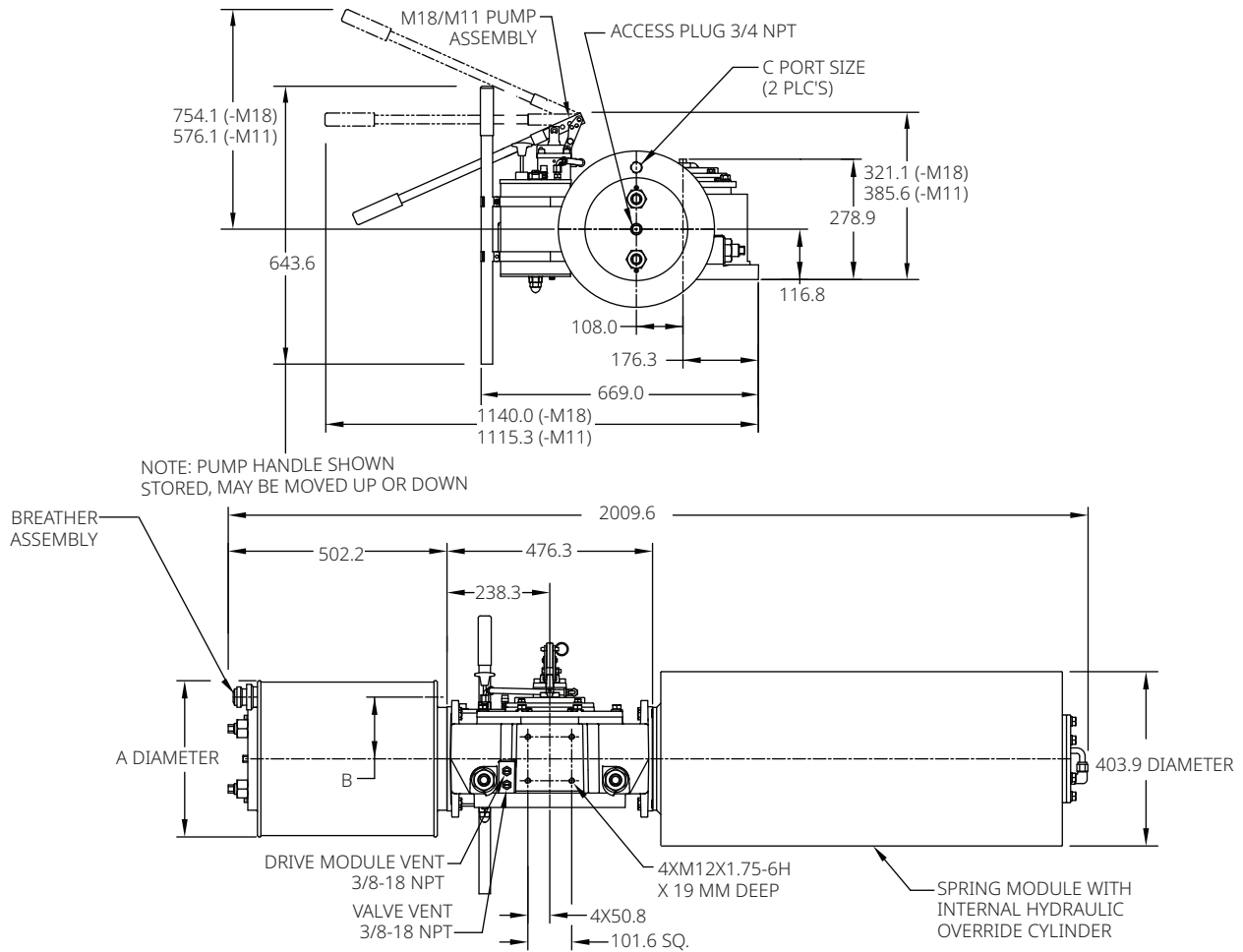
Data sheet

Document No.: VCPDS-13967-EN

Date: January 2024

G/GC-Series

G41XX-SR-M18/GC41XX-SR-M18 G41XX-SR-M11/GC41XX-SR-M11 (CW Model Shown)



Notes:
 Not Certified dimensional drawings. Such drawings are available on request.
 Contact factory with correct model designation and serial number.
 All dimensions are expressed in millimeters.

Table 20.

Actuator Model	A	B	C
G4112-SR-M18/GC4112-SR-M18	330.2	138.2	3/4 NPT
G4114-SR-M18/GC4114-SR-M18	362.0	143.0	3/4 NPT
G4116-SR-M18/GC4116-SR-M18	412.8	158.8	3/4 NPT
G4120-SR-M18/GC4120-SR-M18	514.4	206.5	3/4 NPT
G4124-SR-M18/GC4124-SR-M18	616.0	244.6	3/4 NPT
G4128-SR-M18/GC4128-SR-M18	736.6	292.1	1.0 NPT

Note:
 Dimensions A, B and C remain the same in case -M11 in actuator model.

BETTIS™

EMERSON™

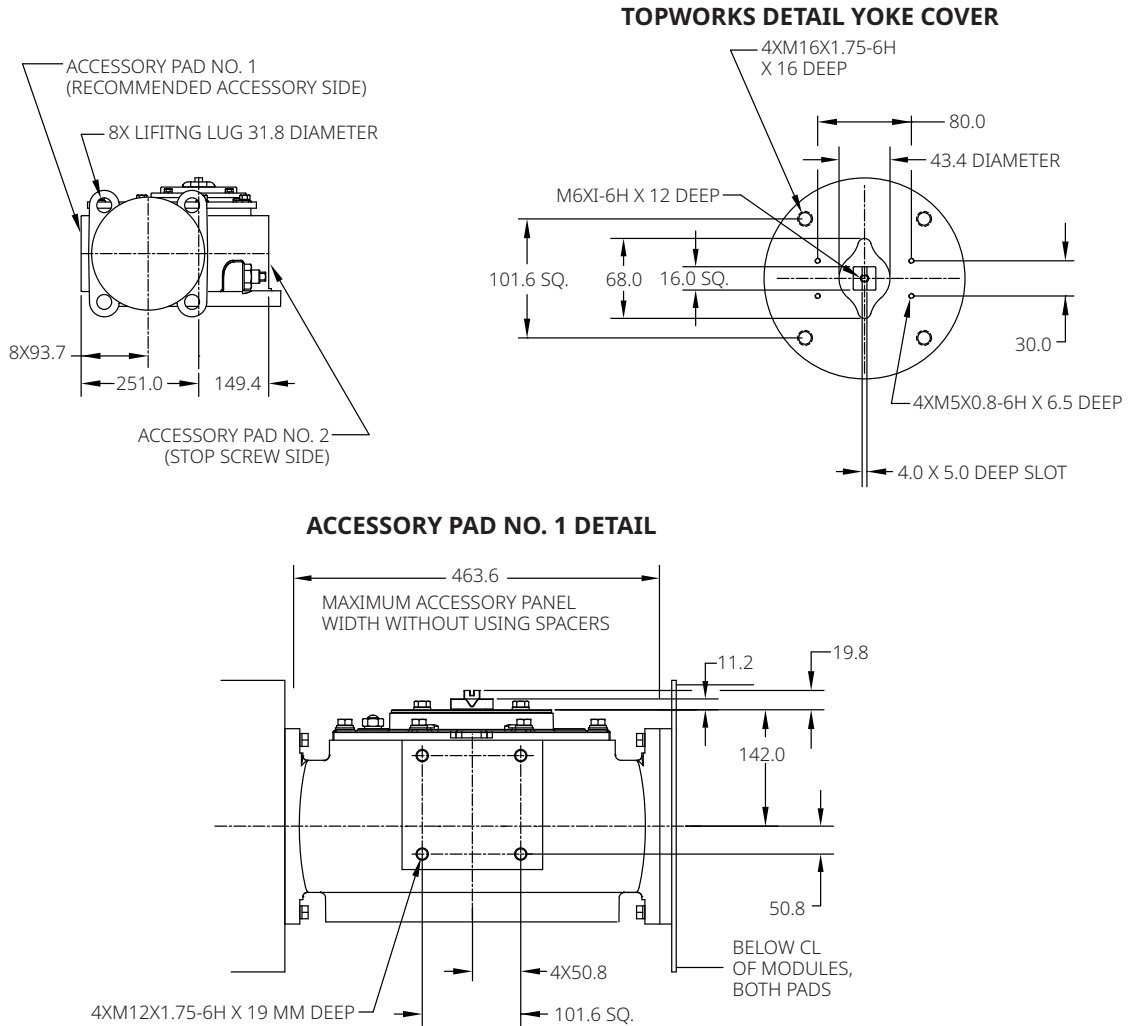
Data sheet

Document No.: VCPDS-13967-EN

Date: January 2024

G/GC-Series

Spring-Return Actuators Lug/Accessory Details



Notes:

Not Certified dimensional drawings. Such drawings are available on request.

Contact factory with correct model designation and serial number.

All dimensions are expressed in millimeters.

BETTIS™



EMERSON™

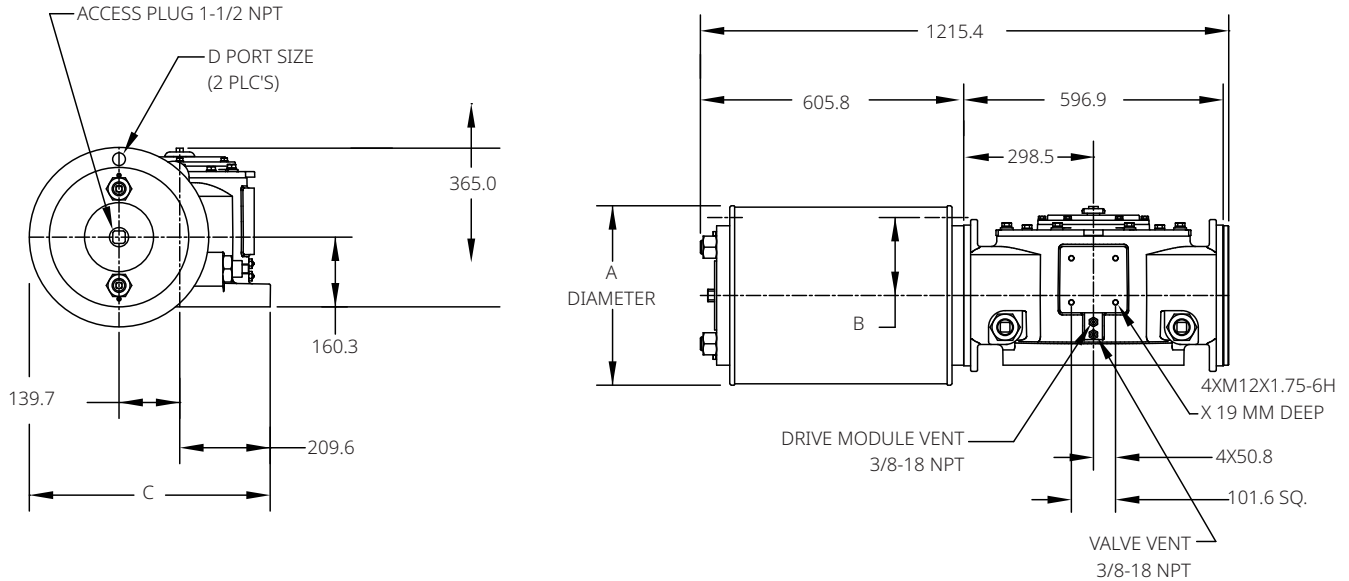
Data sheet

Document No.: VCPDS-13967-EN

Date: January 2024

G/GC-Series

Double-Acting Actuators G51XX/GC51XX (CW Model Shown)



Notes:

Not Certified dimensional drawings. Such drawings are available on request.
Contact factory with correct model designation and serial number.
All dimensions are expressed in millimeters.

Table 21.

Actuator Model	A	B	C	D
G5116/GC5116	412.8	179.3	555.8	3/4 NPT
G5120/GC5120	514.4	203.2	606.6	3/4 NPT
G5124/GC5124	616.0	235.0	657.4	1 NPT
G5128/GC5128	736.6	306.3	717.6	1 NPT
G5132/GC5132	838.2	355.6	768.4	1-1/2 NPT
G5136/GC5136	946.2	406.4	822.5	1-1/2 NPT

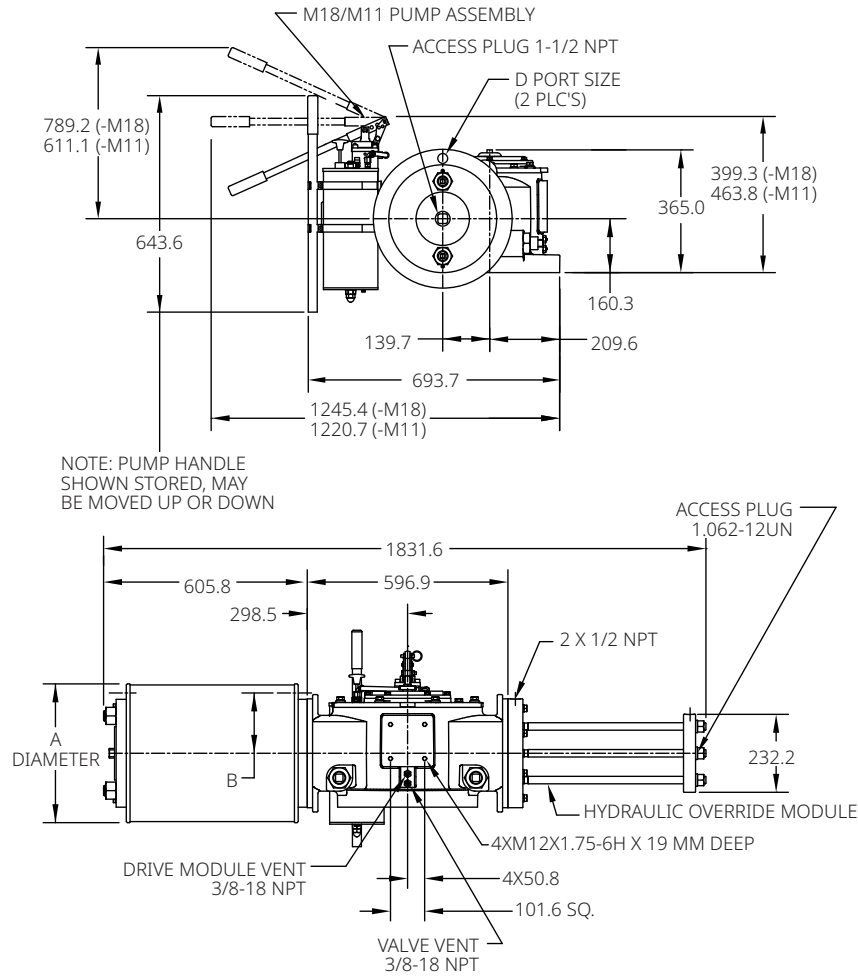
Data sheet

Document No.: VCPDS-13967-EN

Date: January 2024

G/GC-Series

G51XX-M18/GC51XX-M18 G51XX-M11/GC51XX-M11 (CW Model Shown)



Notes:

Not Certified dimensional drawings. Such drawings are available on request. Contact factory with correct model designation and serial number. All dimensions are expressed in millimeters.

Table 22.

Actuator Model	A	B	C
G5116-M18/GC5116-M18	412.8	179.3	3/4 NPT
G5120-M18/GC5120-M18	514.4	203.2	3/4 NPT
G5124-M18/GC5124-M18	616.0	235.0	1 NPT
G5128-M18/GC5128-M18	736.6	306.3	1 NPT
G5132-M18/GC5132-M18	838.2	355.6	1-1/2 NPT
G5136-M18/GC5136-M18	946.2	406.4	1-1/2 NPT

Note:

Dimensions A, B and C remain the same in case -M11 in actuator model.



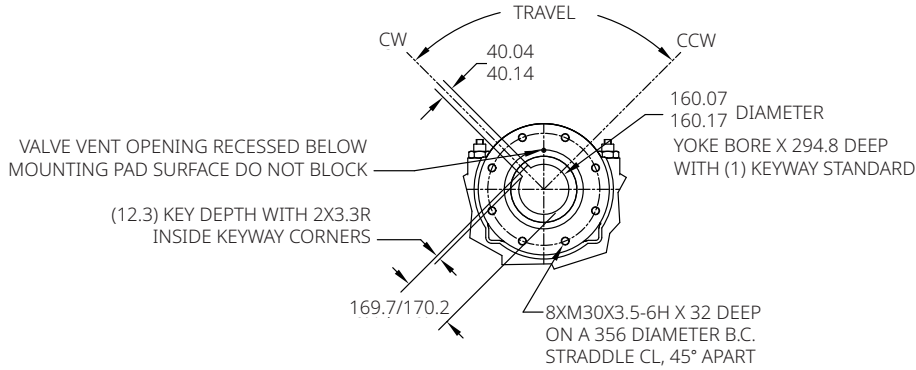
Data sheet

Document No.: VCPDS-13967-EN

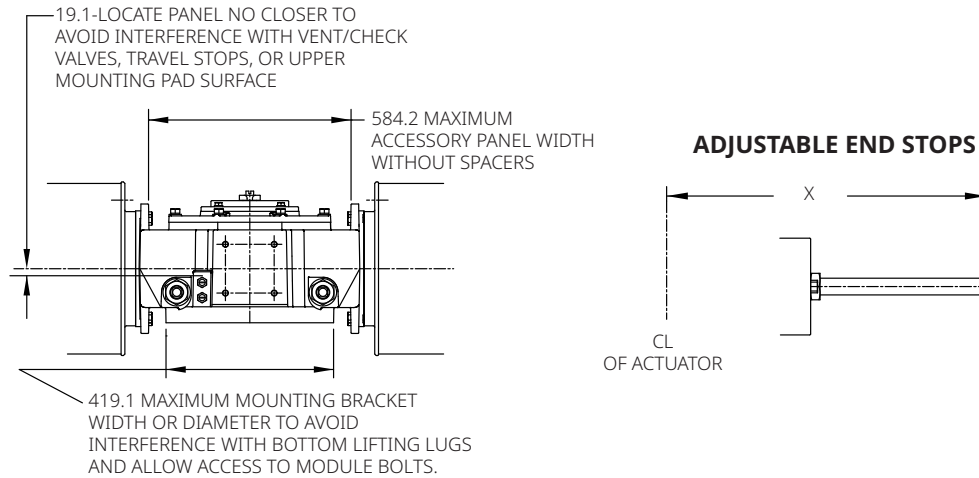
Date: January 2024

G/GC-Series

Double-Acting Actuators Valve/Accessory Mounting Details



ACCESSORY PAD NO. 2 DETAIL



Notes:

Not Certified dimensional drawings. Such drawings are available on request. Contact factory with correct model designation and serial number. All dimensions are expressed in millimeters.

Table 23.

	X Extended Travel Stop	X End Stop
Power Module	1271.8	979.9
Blind End Cap Module	717.6	441.5
Spring Module	1790.7	1333.5

BETTIS™

EMERSON™

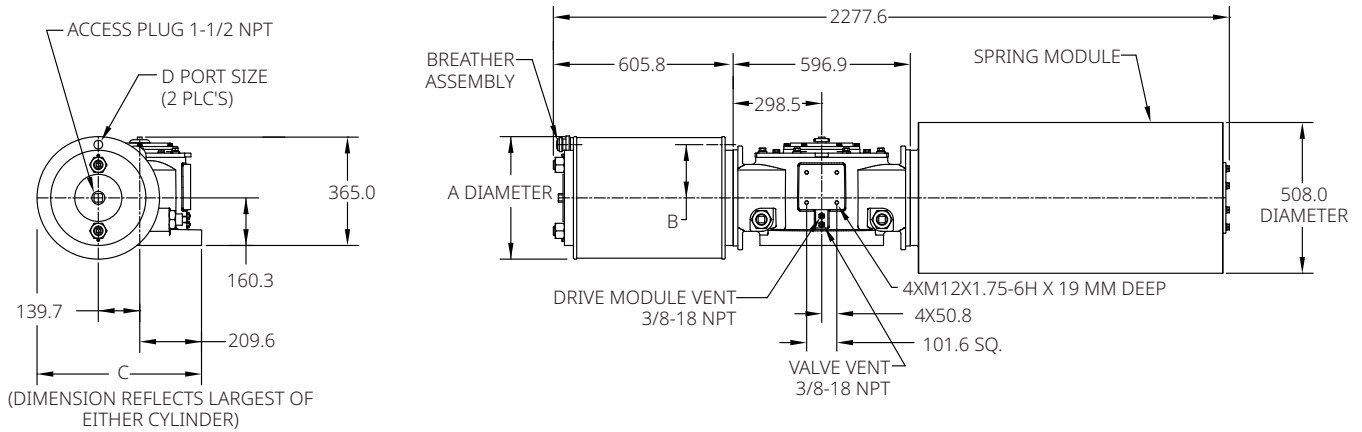
Data sheet

Document No.: VCPDS-13967-EN

Date: January 2024

G/GC-Series

Spring-Return Actuators G51XX-SR/GC51XX-SR (CW Model Shown)



Notes:

Not Certified dimensional drawings. Such drawings are available on request.
Contact factory with correct model designation and serial number.
All dimensions are expressed in millimeters.

Table 24.

Actuator Model	A	B	C	D
G5116-SR/GC5116-SR	412.8	179.3	603.3	3/4 NPT
G5120-SR/GC5120-SR	514.4	203.2	606.6	3/4 NPT
G5124-SR/GC5124-SR	616.0	235.0	657.4	1 NPT
G5128-SR/GC5128-SR	736.6	306.3	717.6	1 NPT
G5132-SR/GC5132-SR	838.2	355.6	768.4	1-1/2 NPT
G5136-SR/GC5136-SR	946.2	406.4	822.5	1-1/2 NPT

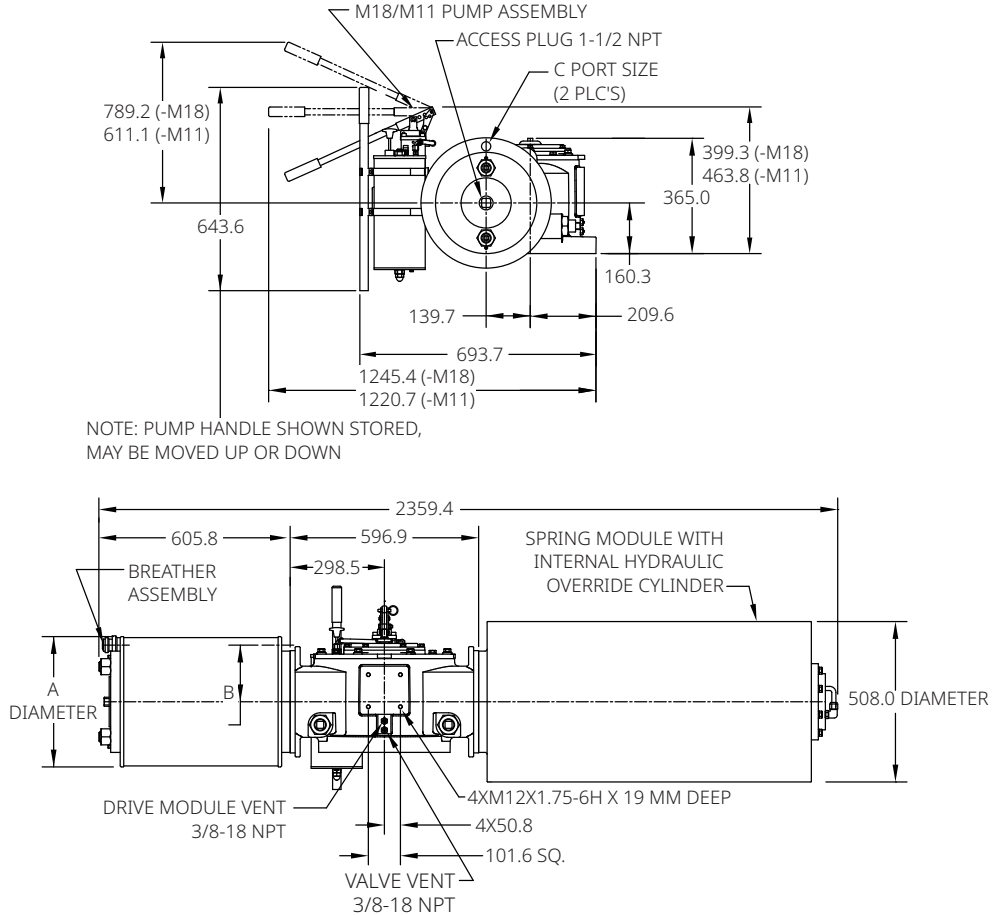
Data sheet

Document No.: VCPDS-13967-EN

Date: January 2024

G/GC-Series

G51XX-SR-M18/GC51XX-SR-M18 G51XX-SR-M11/GC51XX-SR-M11 (CW Model Shown)



Notes:
 Not Certified dimensional drawings. Such drawings are available on request.
 Contact factory with correct model designation and serial number.
 All dimensions are expressed in millimeters.

Table 25.

Actuator Model	A	B	C
G5116-SR-M18/GC5116-SR-M18	412.8	179.3	3/4 NPT
G5120-SR-M18/GC5120-SR-M18	514.4	203.2	3/4 NPT
G5124-SR-M18/GC5124-SR-M18	616.0	235.0	1 NPT
G5128-SR-M18/GC5128-SR-M18	736.6	306.3	1 NPT
G5132-SR-M18/GC5132-SR-M18	838.2	355.6	1-1/2 NPT
G5136-SR-M18/GC5136-SR-M18	946.2	406.4	1-1/2 NPT

Note:
 Dimensions A, B and C remain the same in case -M11 in actuator model.



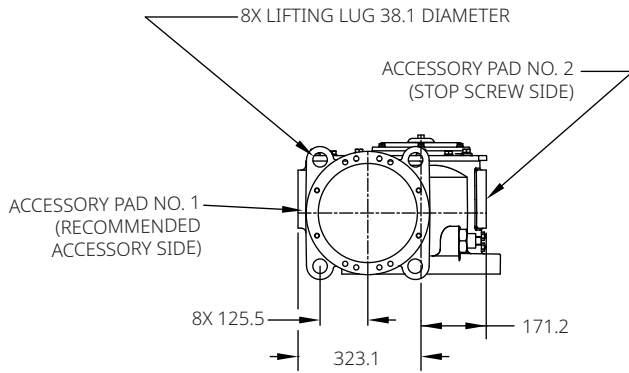
Data sheet

Document No.: VCPDS-13967-EN

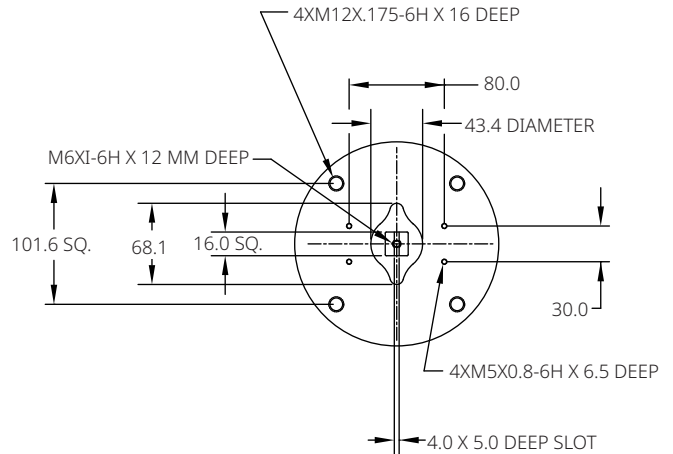
Date: January 2024

G/GC-Series

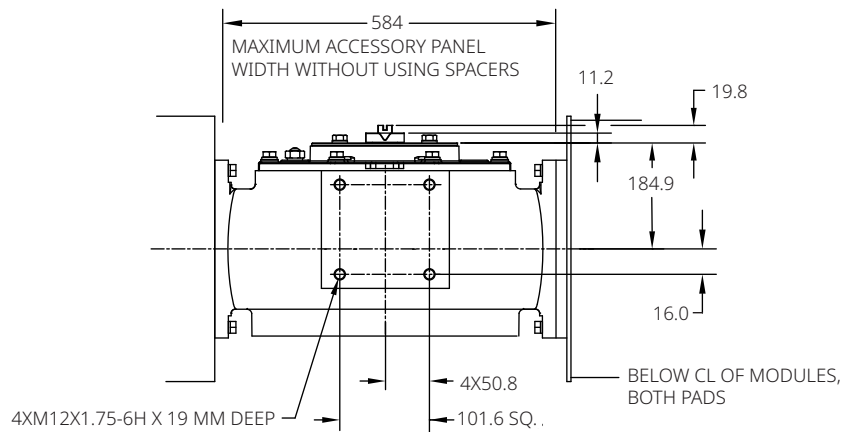
Spring-Return Actuators Lug/Accessory Details



TOPWORKS DETAIL YOKE COVER



ACCESSORY PAD NO. 1 DETAIL



Notes:

Not Certified dimensional drawings. Such drawings are available on request.
Contact factory with correct model designation and serial number.
All dimensions are expressed in millimeters.

BETTIS™



EMERSON™

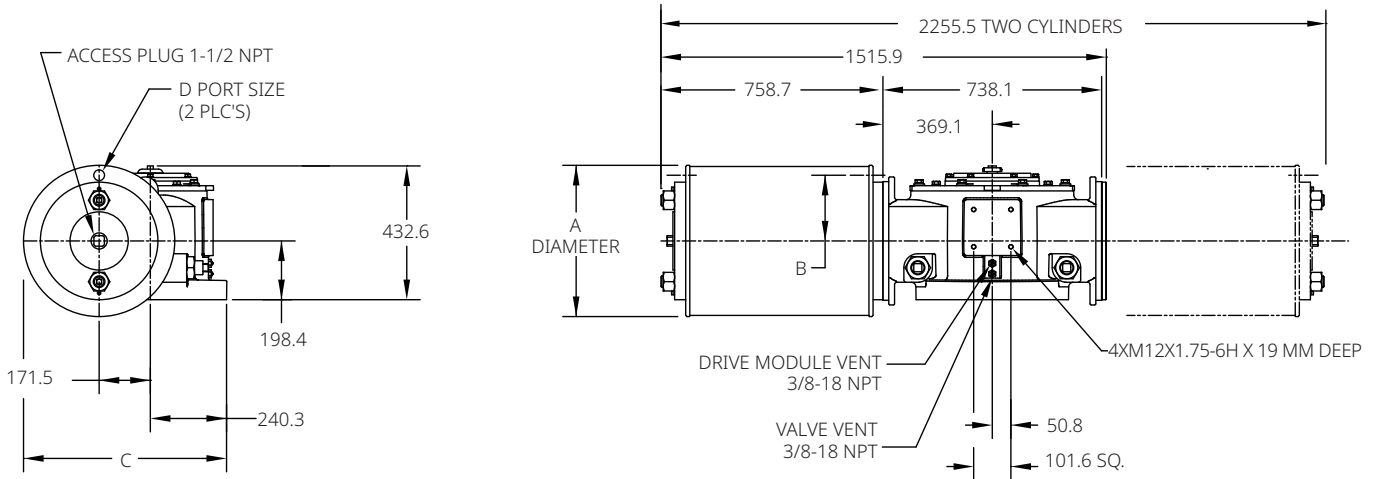
Data sheet

Document No.: VCPDS-13967-EN

Date: January 2024

G/GC-Series

Double-Acting Actuators G71XX/GC71XX or G712XX/GC712XX (CW Model Shown)



Notes:

Not Certified dimensional drawings. Such drawings are available on request.
Contact factory with correct model designation and serial number.
All dimensions are expressed in millimeters.

Table 26.

Actuator Model	A	B	C	D
G7120/GC7120	514.4	222.3	669.0	3/4 NPT
G7124/GC7124	616.0	244.6	719.8	1 NPT
G7128/GC7128	736.6	285.8	780.0	1-1/2 NPT
G7132/GC7132	838.2	355.6	830.8	1-1/2 NPT
G7136/GC7136	946.2	406.4	884.9	1-1/2 NPT
G71228/GC71228	736.6	285.8	780.0	1-1/2 NPT

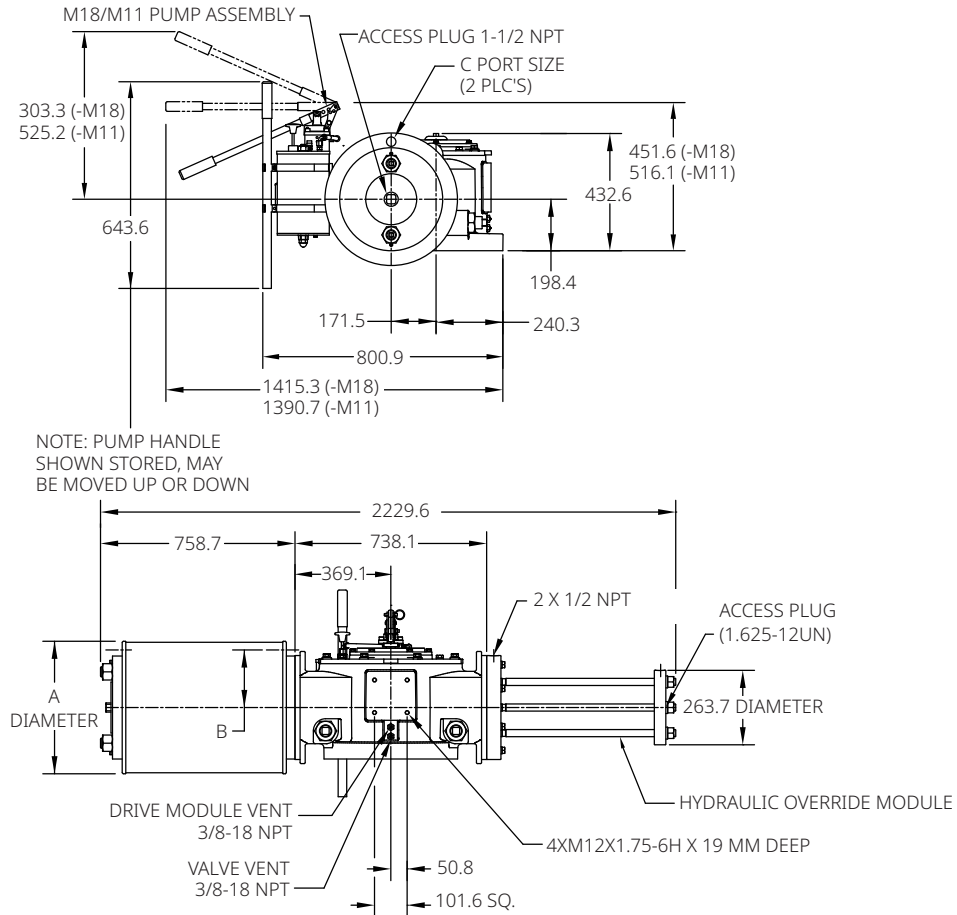
Data sheet

Document No.: VCPDS-13967-EN

Date: January 2024

G/GC-Series

G71XX-M18/GC71XX-M18 G71XX-M11/GC71XX-M11 (CW Model Shown)



Notes:

Not Certified dimensional drawings. Such drawings are available on request.
Contact factory with correct model designation and serial number.
All dimensions are expressed in millimeters.

Table 27.

Actuator Model	A	B	C
G7120-M18/GC7120-M18	514.4	222.3	3/4 NPT
G7124-M18/GC7124-M18	616.0	244.6	1 NPT
G7128-M18/GC7128-M18	736.6	285.8	1-1/2 NPT
G7132-M18/GC7132-M18	838.2	355.6	1-1/2 NPT
G7136-M18/GC7136-M18	946.2	406.4	1-1/2 NPT

Note:

Dimensions A, B and C remain the same in case -M11 in actuator model.



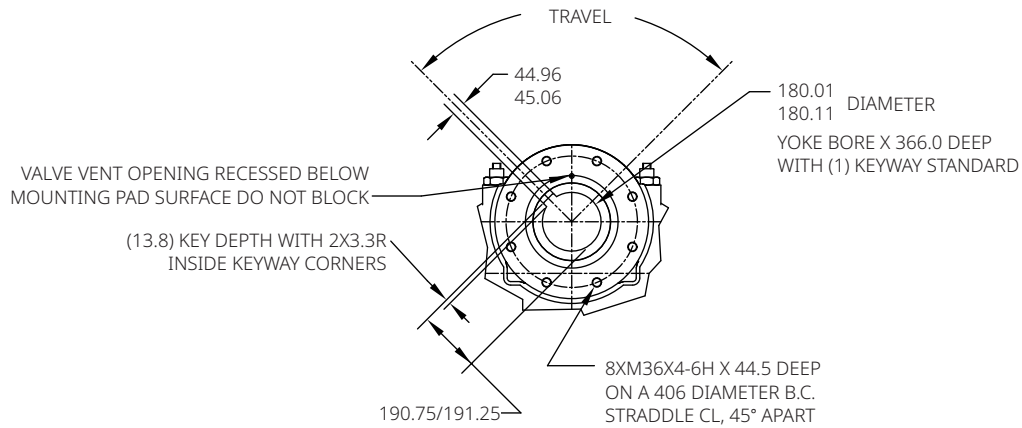
Data sheet

Document No.: VCPDS-13967-EN

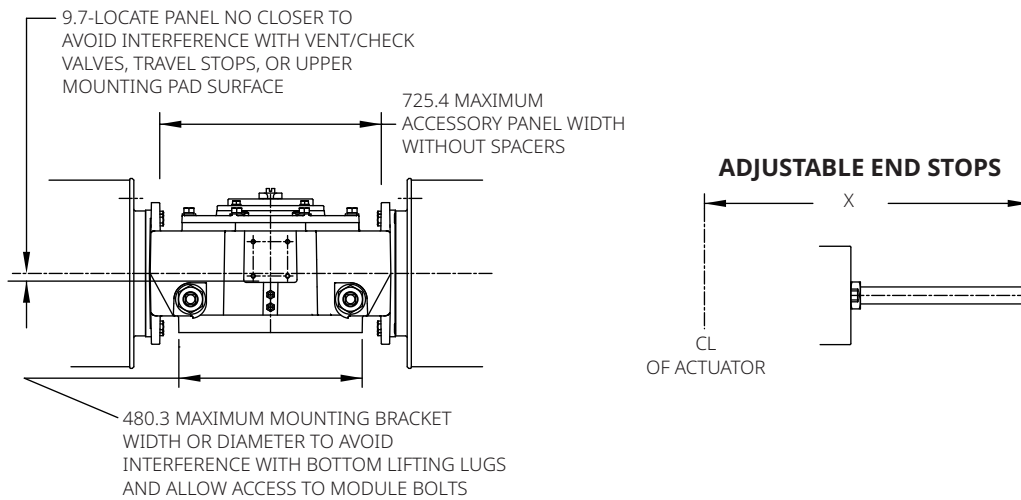
Date: January 2024

G/GC-Series

Double-Acting Actuators Valve/Accessory Mounting Details



ACCESSORY PAD NO. 2 DETAIL



Notes:

Not Certified dimensional drawings. Such drawings are available on request.
Contact factory with correct model designation and serial number.
All dimensions are expressed in millimeters.

Table 28.

	X Extended Travel Stop	X End Stop
Power Module	1548.6	1186.7
Blind End Cap Module	902.5	540.5
Spring Module	2313.9	1382.8

BETTIS™



EMERSON™

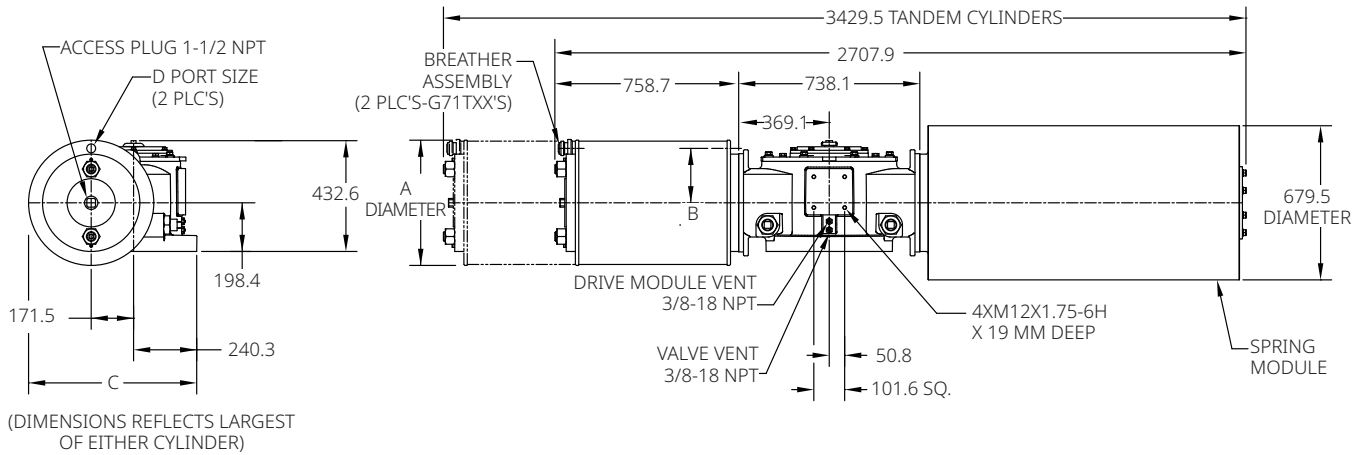
Data sheet

Document No.: VCPDS-13967-EN

Date: January 2024

G/GC-Series

Spring-Return Actuators G71XX-SR/GC71XX-SR or G71TXX-SR/GC71TXX-SR (CW Model Shown)



Notes:

Not Certified dimensional drawings. Such drawings are available on request.
Contact factory with correct model designation and serial number.
All dimensions are expressed in millimeters.

Table 29.

Actuator Model	A	B	C	D
G7120-SR/GC7120-SR	514.4	222.3	751.6	3/4 NPT
G7124-SR/GC7124-SR	616.0	244.6	751.6	1 NPT
G7128-SR/GC7128-SR	736.6	285.8	780.0	1-1/2 NPT
G7132-SR/GC7132-SR	838.2	355.6	830.8	1-1/2 NPT
G7136-SR/GC7136-SR	946.2	406.4	884.9	1-1/2 NPT
G71T28-SR/GC71T28-SR	736.6	285.8	780.0	1-1/2 NPT

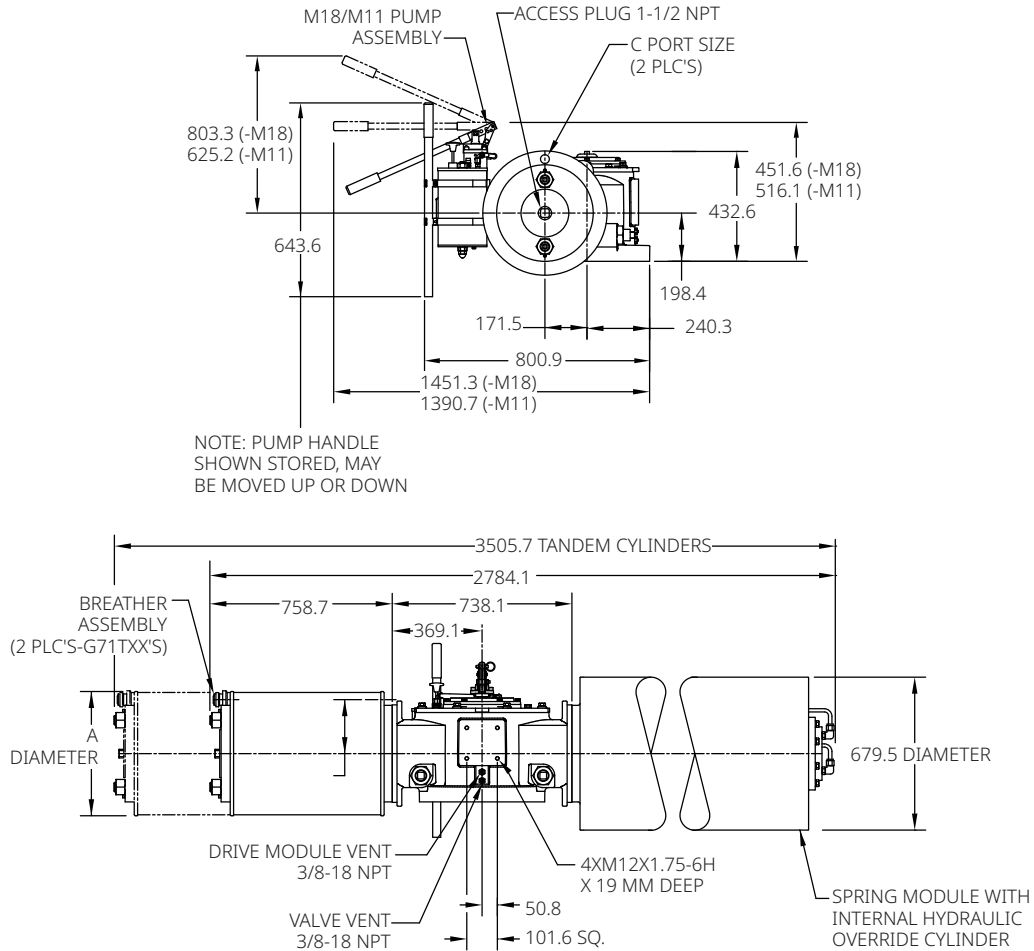
Data sheet

Document No.: VCPDS-13967-EN

Date: January 2024

G/GC-Series

G71XX-SR-M18/GC71XX-SR-M18 or G71TXX-SR-M18/GC71TXX-SR-M18 G71XX-SR-M11/GC71XX-SR-M11 or G71TXX-SR-M11/GC71TXX-SR-M11 (CW Model Shown)



Notes:

Not Certified dimensional drawings. Such drawings are available on request. Contact factory with correct model designation and serial number. All dimensions are expressed in millimeters.

Table 30.

Actuator Model	A	B	C
G7120-SR-M18/GC7120-SR-M18	514.4	222.3	3/4 NPT
G7124-SR-M18/GC7124-SR-M18	616.0	244.6	1 NPT
G7128-SR-M18/GC7128-SR-M18	736.6	285.8	1-1/2 NPT
G7132-SR-M18/GC7132-SR-M18	838.2	355.6	1-1/2 NPT
G7136-SR-M18/GC7136-SR-M18	946.2	406.4	1-1/2 NPT
G71T28-SR-M18/GC71T28-SR-M18	736.6	285.8	1-1/2 NPT

Note:

Dimensions A, B and C remain the same in case -M11 in actuator model.



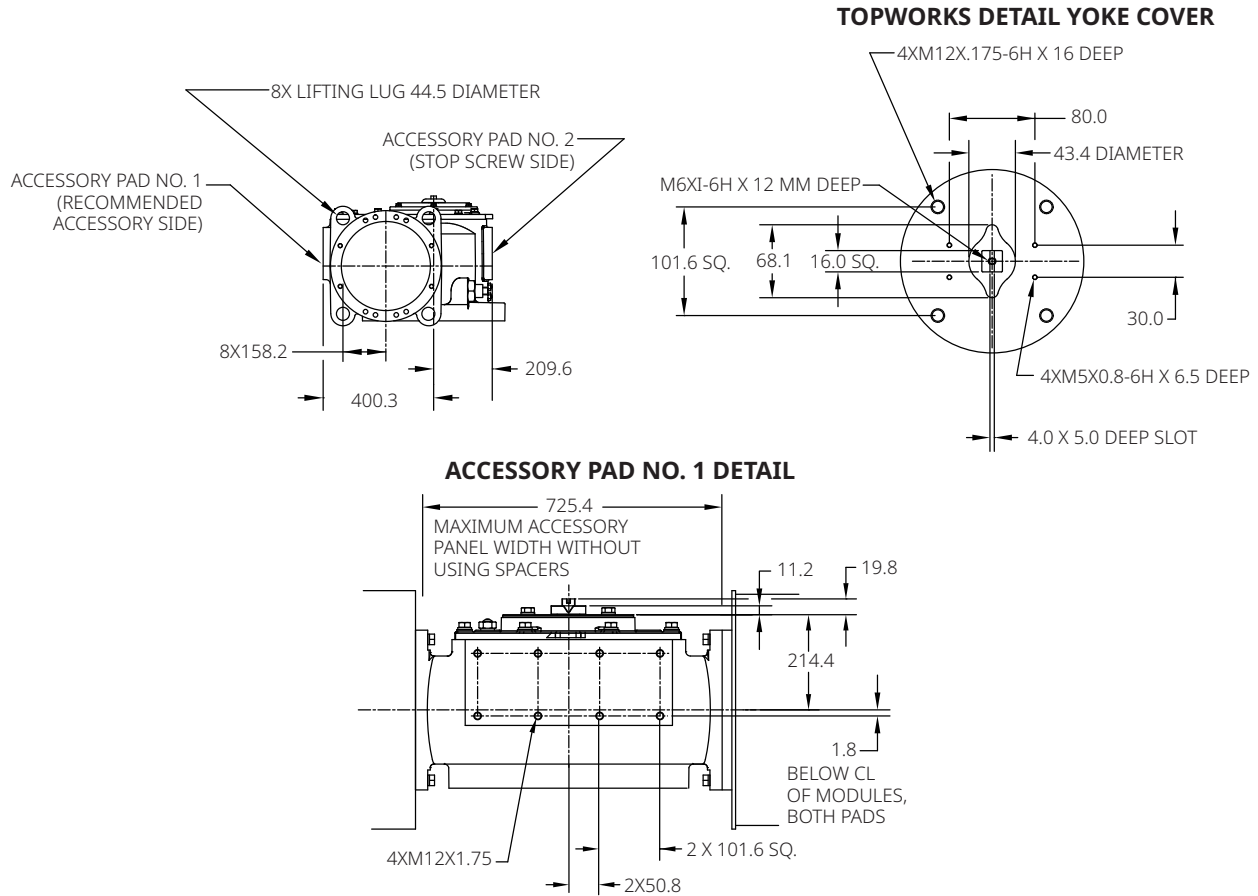
Data sheet

Document No.: VCPDS-13967-EN

Date: January 2024

G/GC-Series

Spring-Return Actuators Lug/Accessory Details



Notes:

Not Certified dimensional drawings. Such drawings are available on request.

Contact factory with correct model designation and serial number.

All dimensions are expressed in millimeters.

BETTIS™


EMERSON™

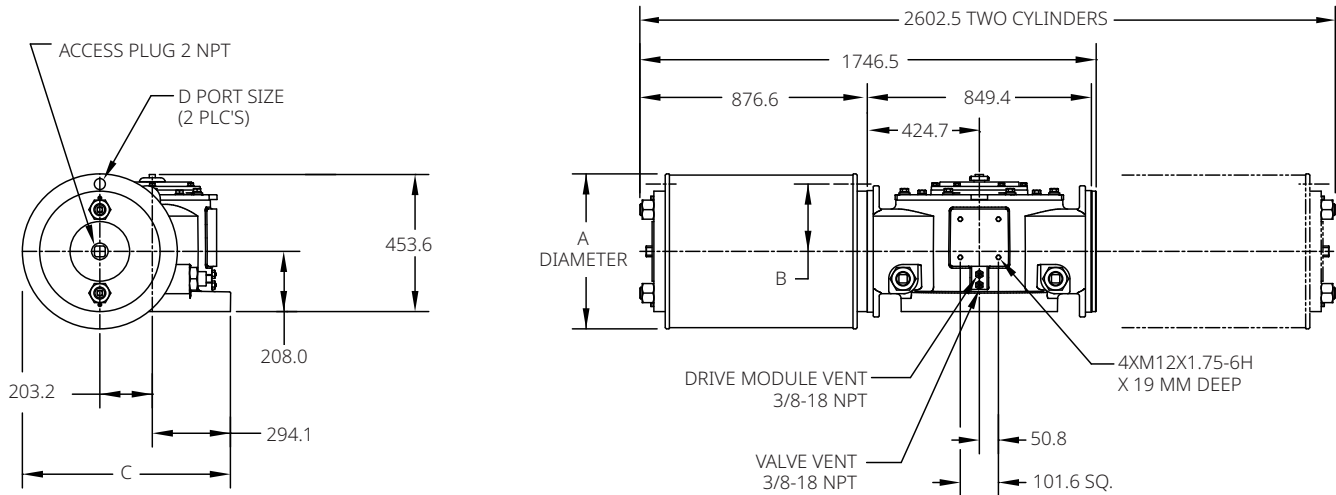
Data sheet

Document No.: VCPDS-13967-EN

Date: January 2024

G/GC-Series

Double-Acting Actuators G81XX/GC81XX or G812XX/GC812XX (CW Model Shown)



Notes:

Not Certified dimensional drawings. Such drawings are available on request.
Contact factory with correct model designation and serial number.
All dimensions are expressed in millimeters.

Table 31.

Actuator Model	A	B	C	D
G8124/GC8124	616.0	244.6	805.4	1 NPT
G8128/GC8128	736.6	314.5	865.6	1-1/2 NPT
G8132/GC8132	838.2	339.9	916.4	1-1/2 NPT
G8136/GC8136	946.2	406.4	970.5	1-1/2 NPT
G8140/GC8140	1047.8	457.2	1021.3	2 NPT
G81232/GC81232	838.2	339.9	916.4	1-1/2 NPT
G81236/GC81236	946.2	406.4	970.5	1-1/2 NPT

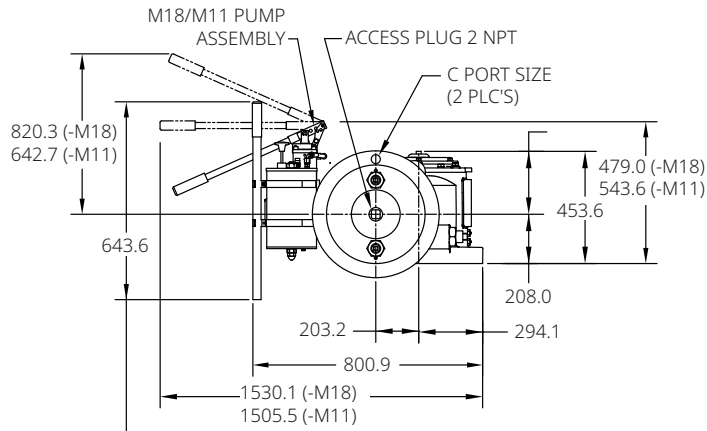
Data sheet

Document No.: VCPDS-13967-EN

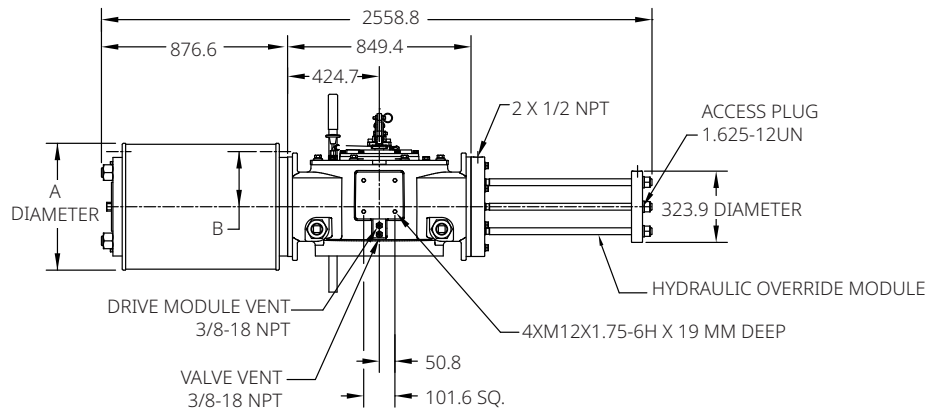
Date: January 2024

G/GC-Series

G81XX-M18/GC81XX-M18 G81XX-M11/GC81XX-M11 (CW Model Shown)



NOTE: PUMP HANDLE SHOWN STORED, MAY BE MOVED UP OR DOWN



Notes:

Not Certified dimensional drawings. Such drawings are available on request. Contact factory with correct model designation and serial number. All dimensions are expressed in millimeters.

Table 32.

Actuator Model	A	B	C
G8124-M18/GC8124-M18	616.0	244.6	1 NPT
G8128-M18/GC8128-M18	736.6	314.5	1-1/2 NPT
G8132-M18/GC8132-M18	838.2	339.9	1-1/2 NPT
G8136-M18/GC8136-M18	946.2	406.4	1-1/2 NPT
G8140-M18/GC8140-M18	1047.8	457.2	2NPT

Note:

Dimensions A, B and C remain the same in case -M11 in actuator model.



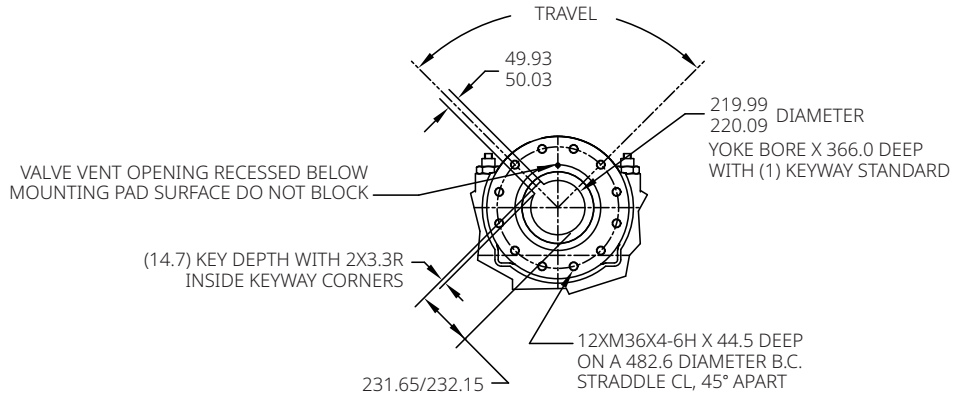
Data sheet

Document No.: VCPDS-13967-EN

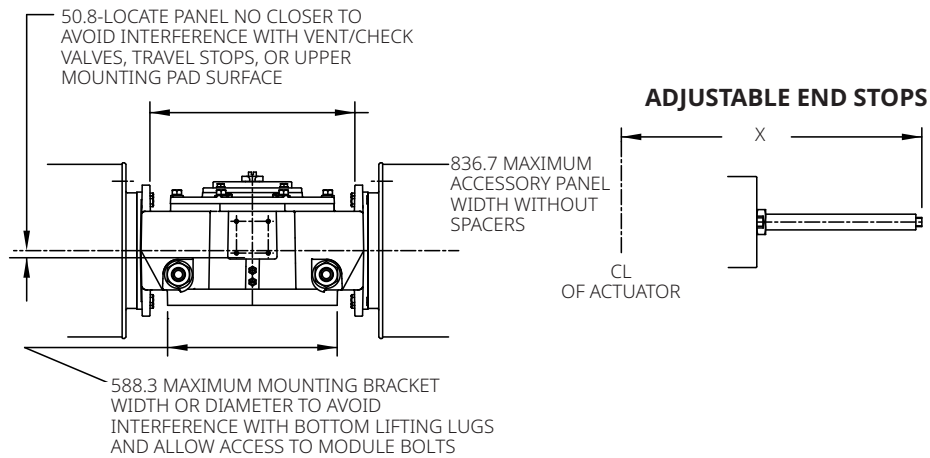
Date: January 2024

G/GC-Series

Double-Acting Actuators Valve/Accessory Mounting Details



ACCESSORY PAD NO. 2 DETAIL



Notes:

Not Certified dimensional drawings. Such drawings are available on request.
Contact factory with correct model designation and serial number.
All dimensions are expressed in millimeters.

Table 33.

	X Extended Travel Stop	X End Stop
Power Module	1801.9	1381.5
Blind End Cap Module	1032.8	633.0
Spring Module	2845.8	1803.4

BETTIS™

EMERSON™

Data sheet

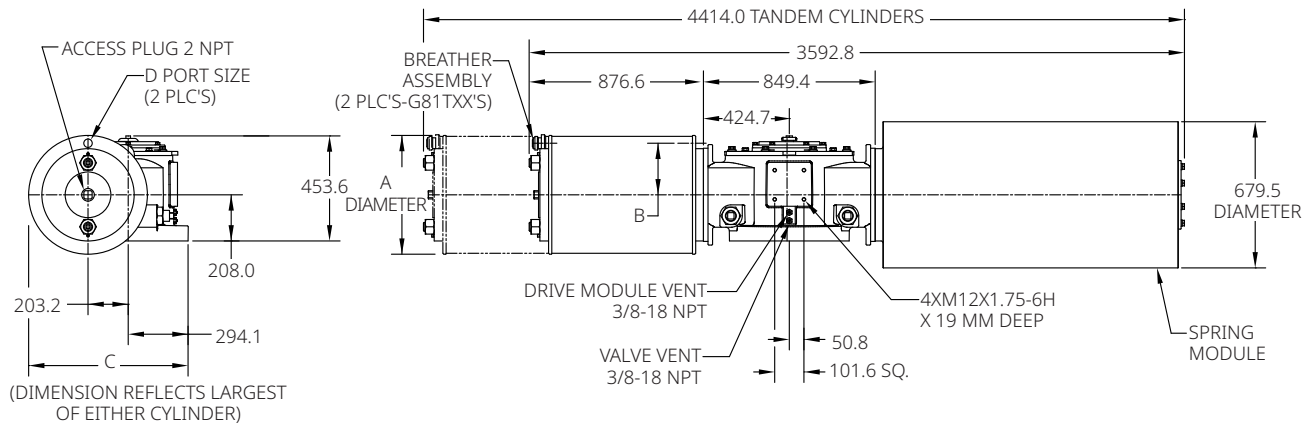
Document No.: VCPDS-13967-EN

Date: January 2024

G/GC-Series

Spring-Return Actuators

G81XX-SR/GC81XX-SR or G81TXX-SR/GC81TXX-SR (CW Model Shown)



Notes:

Not Certified dimensional drawings. Such drawings are available on request. Contact factory with correct model designation and serial number. All dimensions are expressed in millimeters.

Table 34.

Actuator Model	A	B	C	D
G8124-SR/GC8124-SR	616.0	244.6	837.2	1 NPT
G8128-SR/GC8128-SR	736.6	314.5	865.6	1-1/2 NPT
G8132-SR/GC8132-SR	838.2	339.9	916.4	1-1/2 NPT
G8136-SR/GC8136-SR	946.2	406.4	970.5	1-1/2 NPT
G8140-SR/GC8140-SR	1047.8	457.2	1021.3	2 NPT
G81T32-SR/GC81T32-SR	838.2	339.9	916.4	1-1/2 NPT
G81T36-SR/GC81T36-SR	946.2	406.4	970.5	1-1/2 NPT

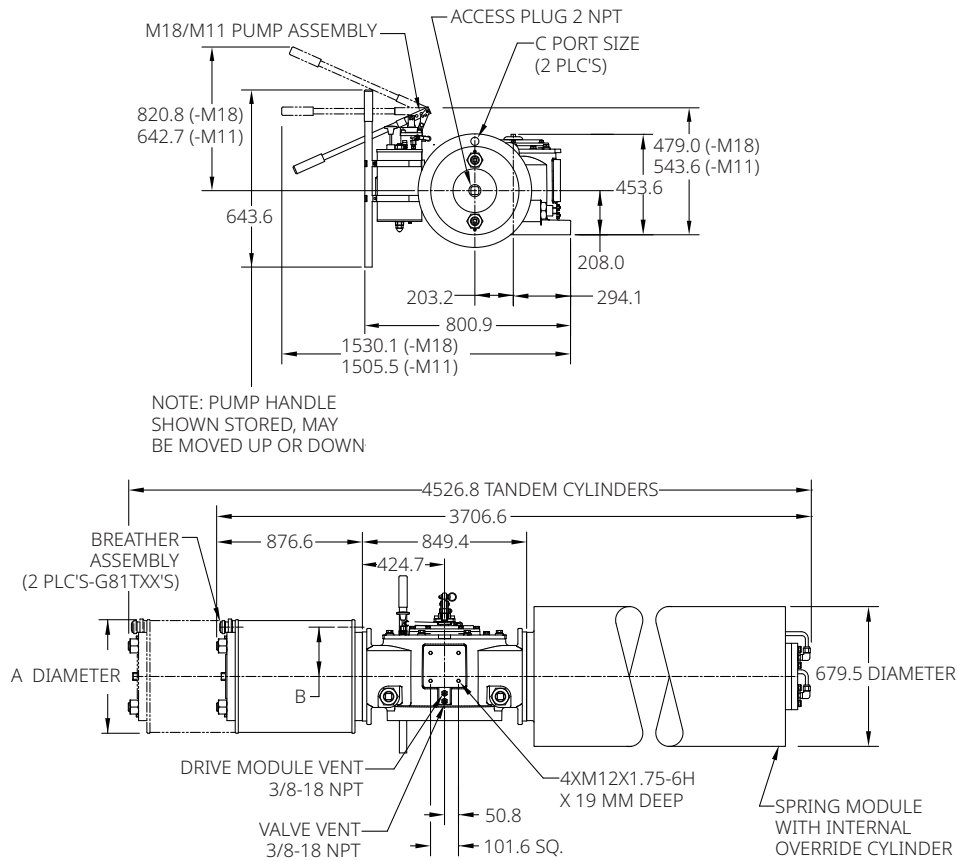
Data sheet

Document No.: VCPDS-13967-EN

Date: January 2024

G/GC-Series

G81XX-SR-M18/GC81XX-SR-M18 or G81TXX-SR-M18/GC81TXX-SR-M18 G81XX-SR-M11/GC81XX-SR-M11 or G81TXX-SR-M11/GC81TXX-SR-M11 (CW Model Shown)



Notes:

Not Certified dimensional drawings. Such drawings are available on request. Contact factory with correct model designation and serial number. All dimensions are expressed in millimeters.

Table 35.

Actuator Model	A	B	C
G8124-SR-M18/GC8124-SR-M18	616.0	244.6	1 NPT
G8128-SR-M18/GC8128-SR-M18	736.6	314.5	1-1/2 NPT
G8132-SR-M18/GC8132-SR-M18	838.2	339.9	1-1/2 NPT
G8136-SR-M18/GC8136-SR-M18	946.2	406.4	1-1/2 NPT
G8140-SR-M18/GC8140-SR-M18	1047.8	457.2	2 NPT
G81T32-SR-M18/GC81T32-SR-M18	838.2	339.9	1-1/2 NPT
G81T36-SR-M18/GC81T36-SR-M18	946.2	406.4	1-1/2 NPT

Note:

Dimensions A, B and C remain the same in case -M11 in actuator model.

BETTIS™

EMERSON™

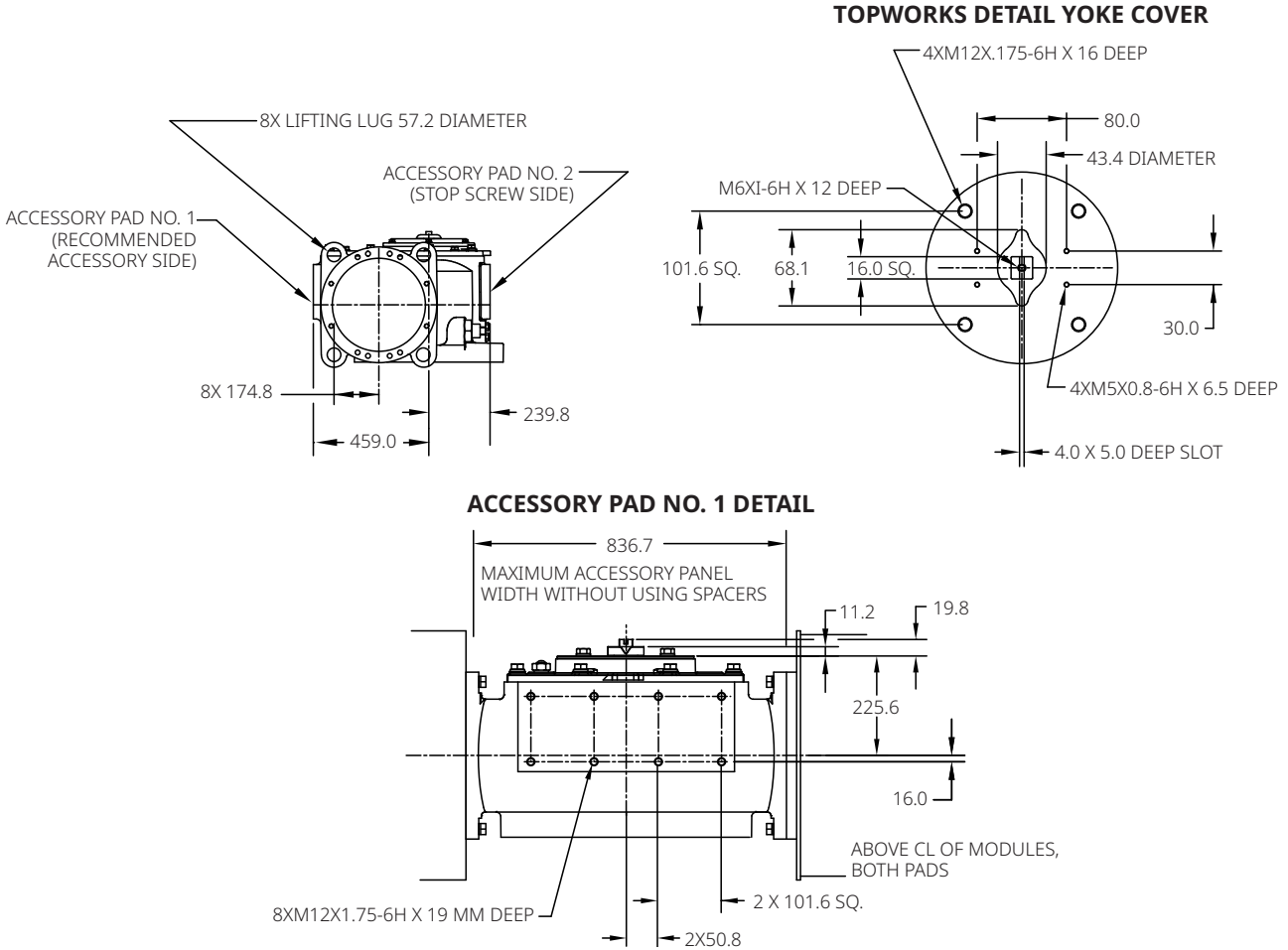
Data sheet

Document No.: VCPDS-13967-EN

Date: January 2024

G/GC-Series

Spring-Return Actuators Lug/Accessory Details



Notes:

Not Certified dimensional drawings. Such drawings are available on request.
Contact factory with correct model designation and serial number.
All dimensions are expressed in millimeters.

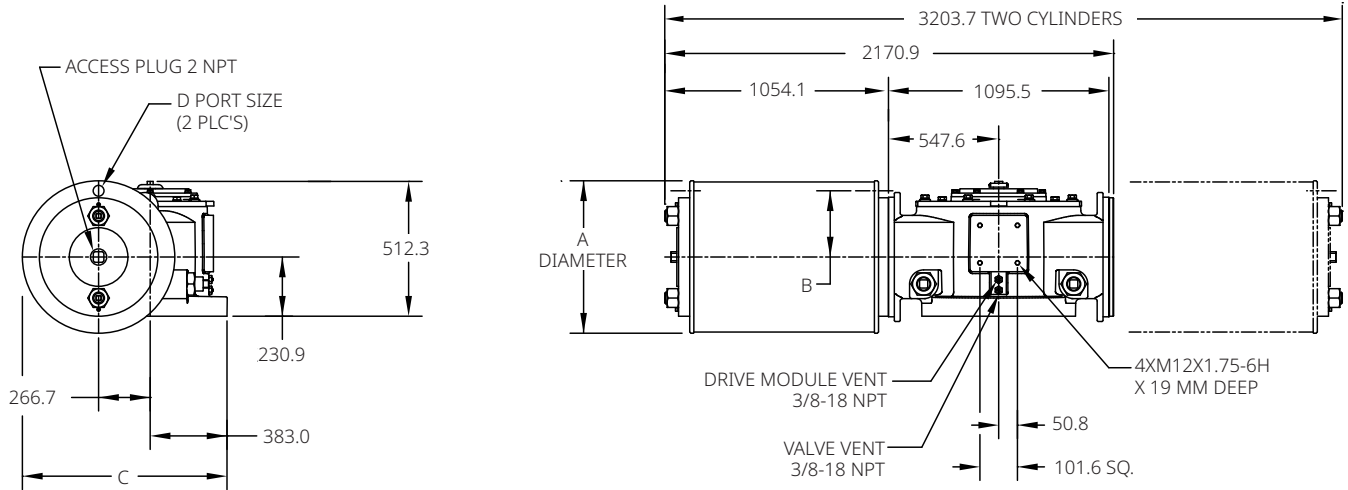
Data sheet

Document No.: VCPDS-13967-EN

Date: January 2024

G/GC-Series

Double-Acting Actuators G101XX/GC101XX or G1012XX/GC1012XX (CW Model Shown)



Notes:

Not Certified dimensional drawings. Such drawings are available on request.
Contact factory with correct model designation and serial number.
All dimensions are expressed in millimeters.

Table 36.

Actuator Model	A	B	C	D
G10128/GC10128	736.6	314.5	1018.0	1-1/2 NPT
G10132/GC10132	838.2	339.9	1068.8	1-1/2 NPT
G10136/GC10136	946.2	406.4	1122.9	2 NPT
G10140/GC10140	1122.9	457.2	1173.7	2 NPT
G101232/GC101232	838.2	339.9	1068.8	1-1/2 NPT
G101236/GC101236	946.2	406.4	1122.9	2 NPT
G101240/GC101240	1047.8	457.2	1173.7	2 NPT

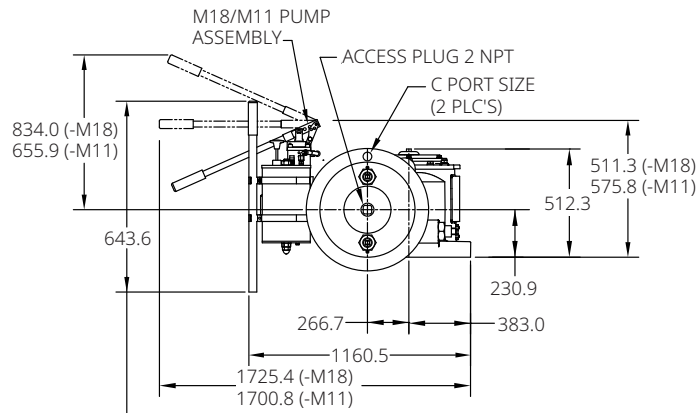
Data sheet

Document No.: VCPDS-13967-EN

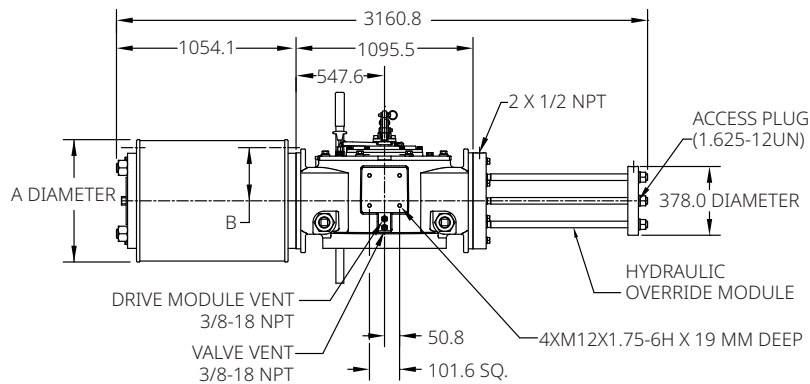
Date: January 2024

G/GC-Series

G101XX-M18/GC101XX-M18 G101XX-M11/GC101XX-M11 (CW Model Shown)



NOTE: PUMP HANDLE SHOWN STORED, MAY BE MOVED UP OR DOWN



Notes:

Not Certified dimensional drawings. Such drawings are available on request. Contact factory with correct model designation and serial number. All dimensions are expressed in millimeters.

Table 37.

Actuator Model	A	B	C
G10128-M18/GC10128-M18	736.6	314.5	1-1/2 NPT
G10132-M18/GC10132-M18	838.2	339.9	1-1/2 NPT
G10136-M18/GC10136-M18	946.2	406.4	2 NPT
G10140-M18/GC10140-M18	1047.8	457.2	2 NPT

Note:

Dimensions A, B and C remain the same in case -M11 in actuator model.

BETTIS[™]

EMERSON[™]

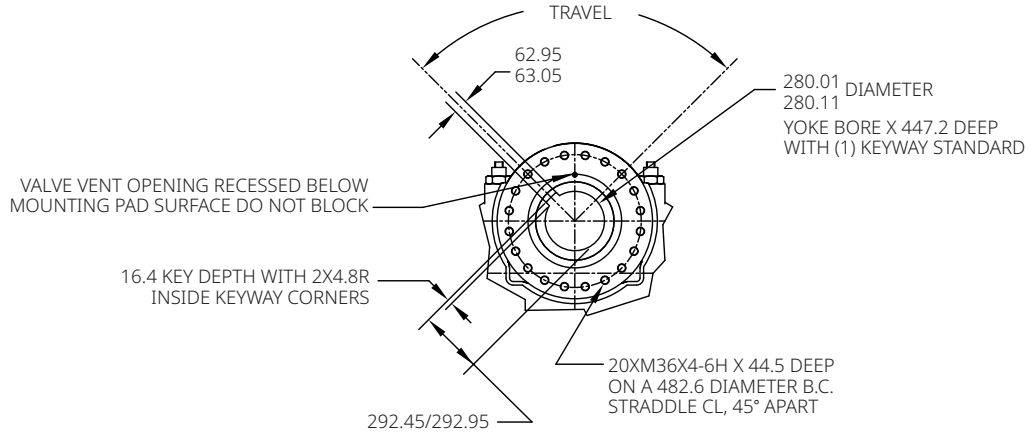
Data sheet

Document No.: VCPDS-13967-EN

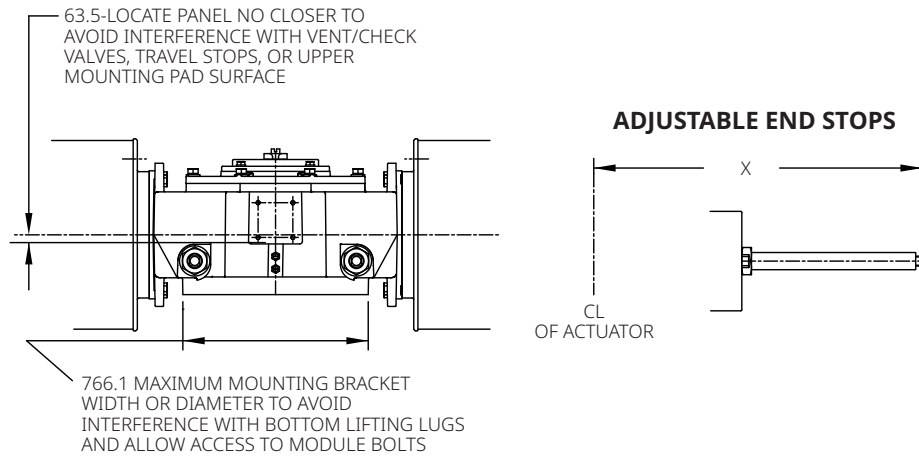
Date: January 2024

G/GC-Series

Double-Acting Actuators Valve/Accessory Mounting Details



ACCESSORY PAD NO. 2 DETAIL



Notes:

Not Certified dimensional drawings. Such drawings are available on request.
Contact factory with correct model designation and serial number.
All dimensions are expressed in millimeters.

Table 38.

	X Extended Travel Stop	X End Stop
Power Module	2262.6	1669.0
Blind End Cap Module	1325.6	757.4
Spring Module	3429.5	2051.6

BETTIS™

EMERSON™

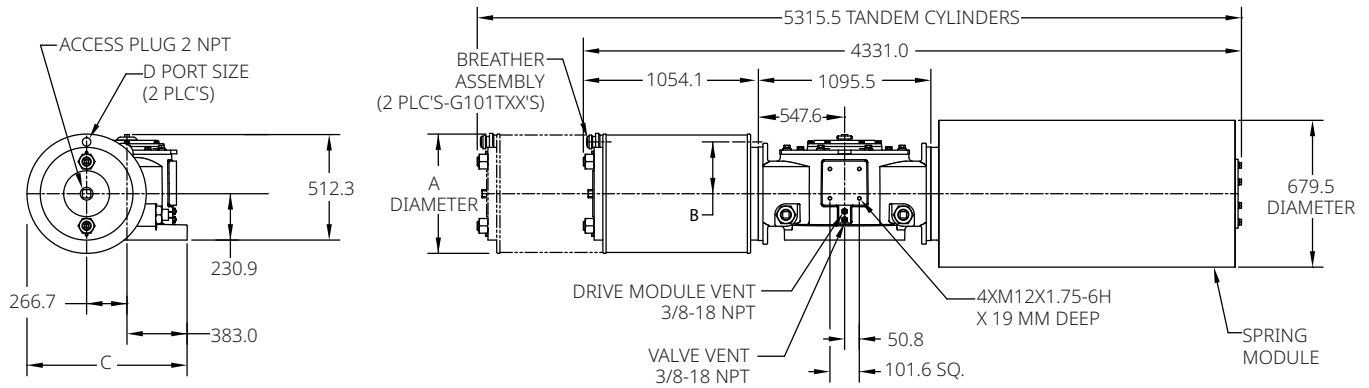
Data sheet

Document No.: VCPDS-13967-EN

Date: January 2024

G/GC-Series

Spring-Return Actuators G101XX-SR/GC101XX-SR or G101TXX-SR/GC101TXX-SR (CW Model Shown)



Notes:

Not Certified dimensional drawings. Such drawings are available on request.
Contact factory with correct model designation and serial number.
All dimensions are expressed in millimeters.

Table 39.

Actuator Model	A	B	C	D
G10128-SR/GC10128-SR	736.6	314.5	1018.0	1-1/2 NPT
G10132-SR/GC10132-SR	838.2	339.9	1068.8	1-1/2 NPT
G10136-SR/GC10136-SR	946.2	406.4	1122.9	2 NPT
G10140-SR/GC10140-SR	1047.8	457.2	1173.7	2 NPT
G101T32-SR/GC101T32-SR	838.2	339.9	1068.8	1-1/2 NPT
G101T36-SR/GC101T36-SR	946.2	406.4	1122.9	2 NPT
G101T40-SR/GC101T40-SR	1047.8	457.2	1173.7	2 NPT

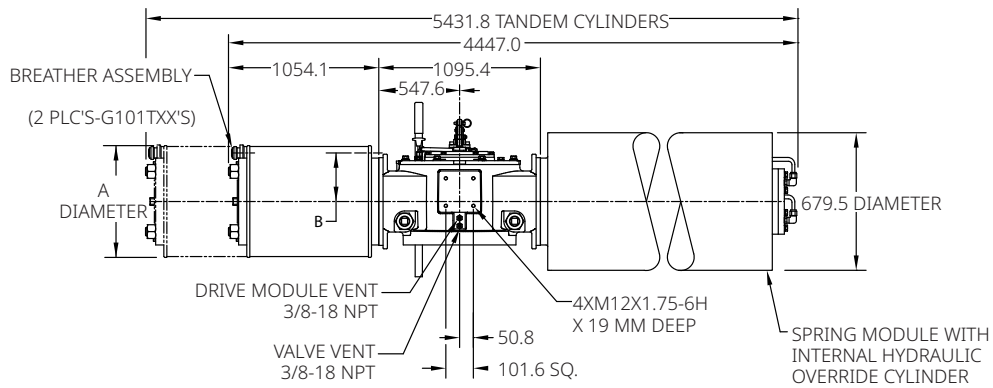
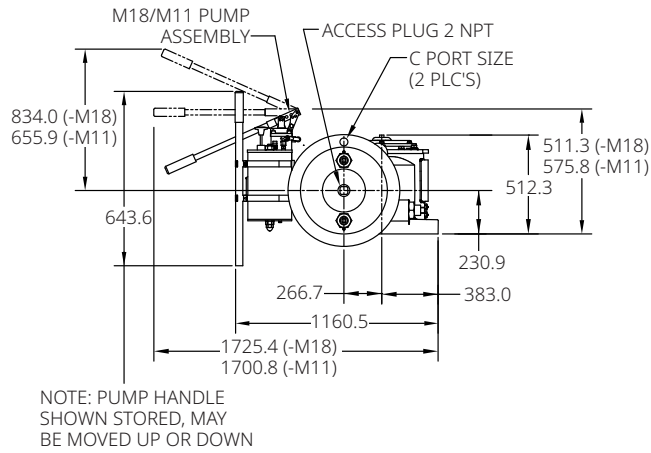
Data sheet

Document No.: VCPDS-13967-EN

Date: January 2024

G/GC-Series

G101XX-SR-M18/GC101XX-SR-M18 or G101TXX-SR-M18/GC101TXX-SR-M18 G101XX-SR-M11/GC101XX-SR-M11 or G101TXX-SR-M11/GC101TXX-SR-M11 (CW Model Shown)



Notes:

Not Certified dimensional drawings. Such drawings are available on request.
Contact factory with correct model designation and serial number.
All dimensions are expressed in millimeters.

Table 40.

Actuator Model	A	B	C
G10128-SR-M18/GC10128-SR-M18	736.6	314.5	1-1/2 NPT
G10132-SR-M18/GC10132-SR-M18	838.2	339.9	1-1/2 NPT
G10136-SR-M18/GC10136-SR-M18	946.2	406.4	2 NPT
G10140-SR-M18/GC10140-SR-M18	1047.8	457.2	2 NPT
G101T32-SR-M18/GC101T32-SR-M18	838.2	339.9	1-1/2 NPT
G101T36-SR-M18/GC101T36-SR-M18	946.2	406.4	2 NPT
G101T40-SR-M18/GC101T40-SR-M18	1047.8	457.2	2 NPT

Note:

Dimensions A, B and C remain the same in case -M11 in actuator model.

BETTIS™

EMERSON™

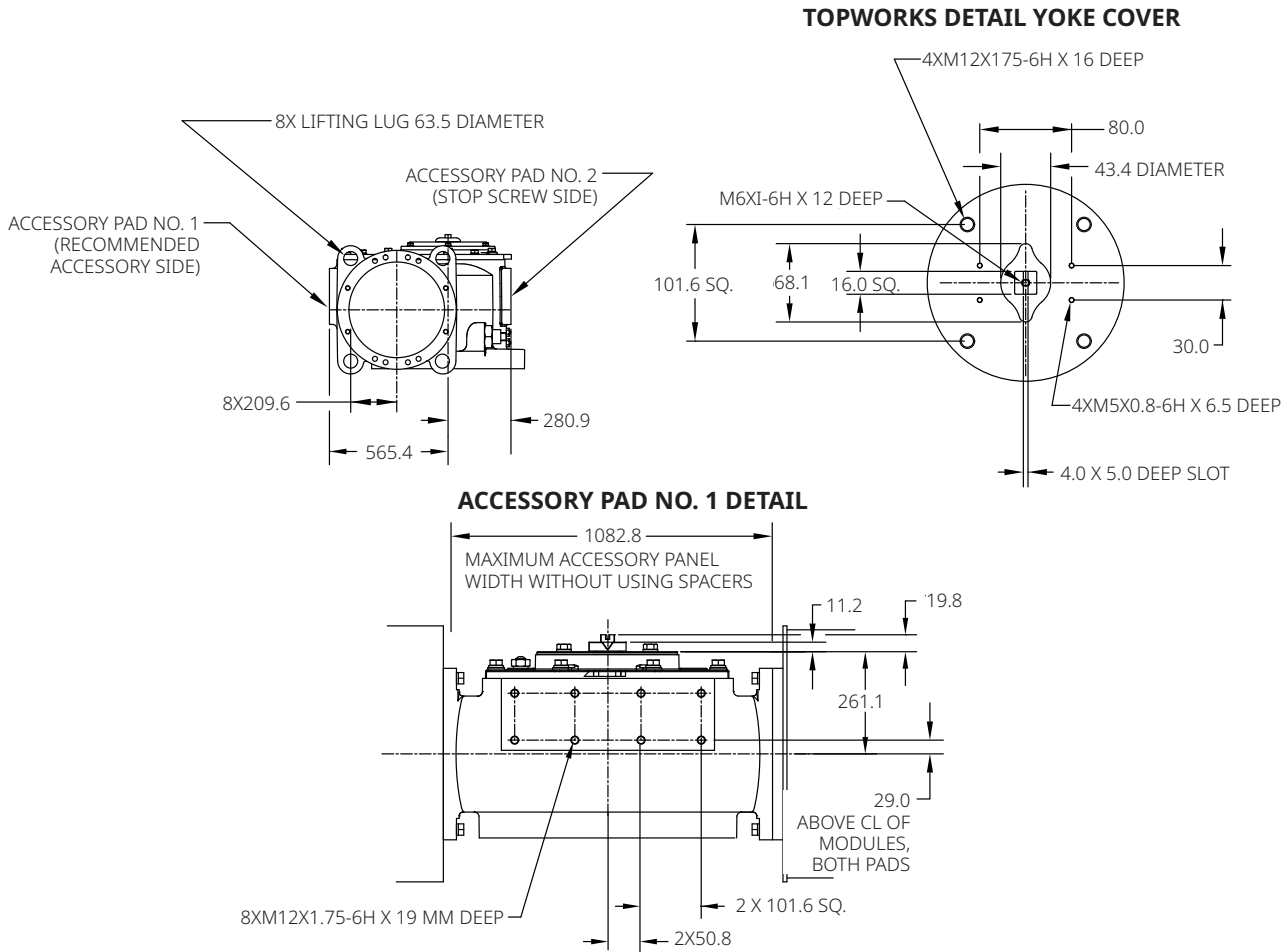
Data sheet

Document No.: VCPDS-13967-EN

Date: January 2024

G/GC-Series

Spring-Return Actuators Lug/Accessory Details



Notes:

Not Certified dimensional drawings. Such drawings are available on request.
Contact factory with correct model designation and serial number.

All dimensions are expressed in millimeters.

BETTIS™

© 2024 Emerson. The information in this document is subject to change without notice. Updated data sheets can be obtained from our website www.emerson.com/bettis or from your Emerson representative.



EMERSON™

www.emerson.com/bettis

VCPDS-13967-EN © 2024 (PC - 17262) Emerson. All rights reserved.

The Emerson logo is a trademark and service mark of Emerson Electric Co. Bettis™ is a mark of one of the Emerson family of companies. All other marks are property of their respective owners.

The contents of this publication are presented for informational purposes only, and while every effort has been made to ensure their accuracy, they are not to be construed as warranties or guarantees, express or implied, regarding the products or services described herein or their use or applicability. All sales are governed by our terms and conditions, which are available upon request. We reserve the right to modify or improve the designs or specifications of such products at any time without notice.

BETTIS™

