

Data sheet

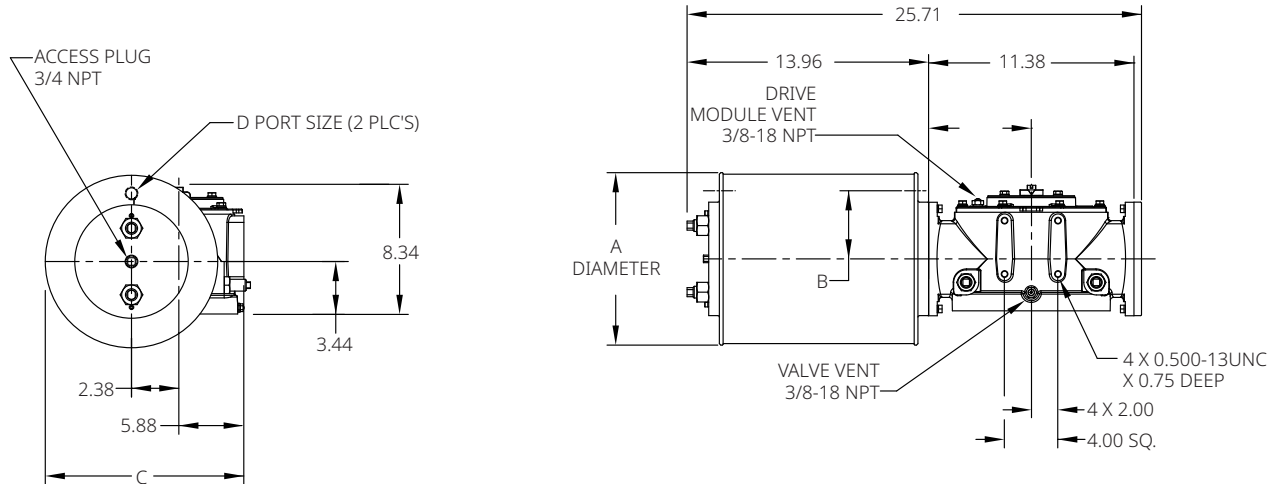
Document No.: VCPDS-13967-US

Date: June 2024

G/GC-Series

Dimensions – (Pneumatic) in. G/GC-Series

Double-Acting Actuators G010XX/GC010XX (CW Model Shown)



Notes:

Not certified dimensional drawings. Such drawings are available on request.
Contact factory with correct model designation and serial number.
All dimensions are expressed in inches.

Table 1.

Actuator Model	A	B	C	D
G01008/GC01008	8.75	3.19	10.25	3/4 NPT
G01009/GC01009	9.88	3.78	10.82	3/4 NPT
G01010/GC01010	11.00	4.38	11.38	3/4 NPT
G01012/GC01012	13.00	5.00	12.38	3/4 NPT
G01014/GC01014	14.25	5.50	13.00	3/4 NPT

BETTIS™

EMERSON™

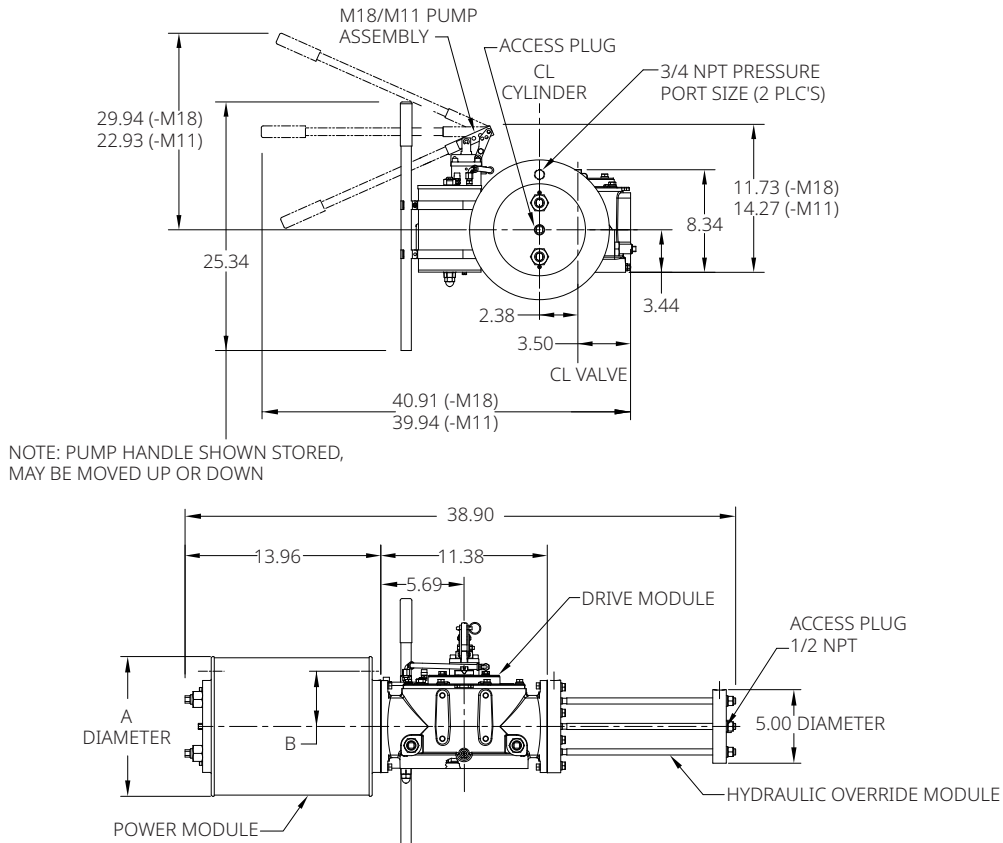
Data sheet

Document No.: VCPDS-13967-US

Date: June 2024

G/GC-Series

G010XX-M18/GC010XX-M18 G010XX-M11/GC010XX-M11 (CW Model Shown)



Notes:

Not certified dimensional drawings. Such drawings are available on request. Contact factory with correct model designation and serial number. All dimensions are expressed in inches.

Table 2.

Actuator Model	A	B
G01008-M18/GC01008-M18	8.75	3.19
G01009-M18/GC01009-M18	9.88	3.78
G01010-M18/GC01010-M18	11.00	4.38
G01012-M18/GC01012-M18	13.00	5.00
G01014-M18/GC01014-M18	14.25	5.50

Note:

Dimensions A and B remain the same in case -M11 in actuator model.

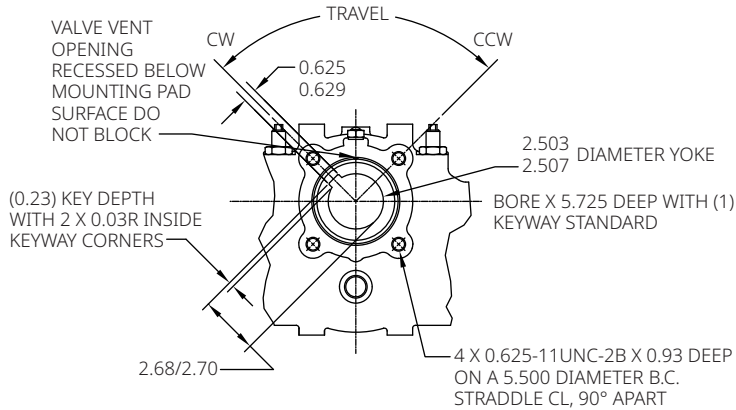
Data sheet

Document No.: VCPDS-13967-US

Date: June 2024

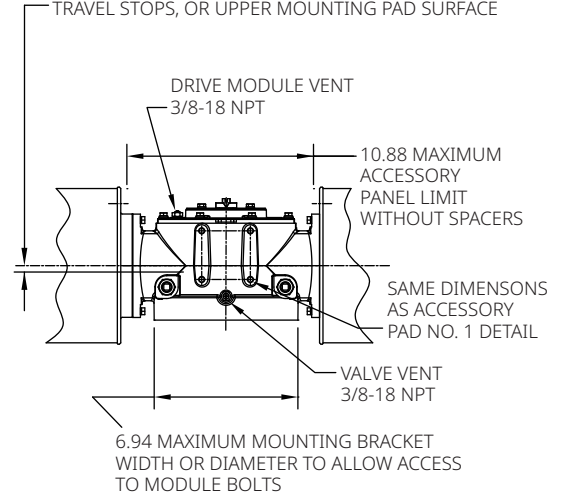
G/GC-Series

Double-Acting Actuators Mounting Pad Detail

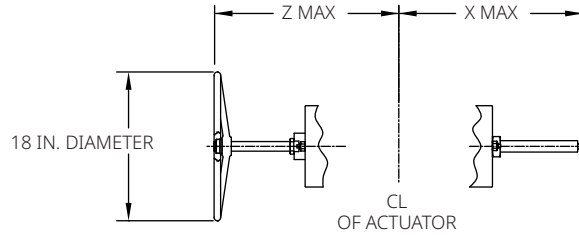


ACCESSORY PAD NO. 2 DETAIL

0.56 - LOCATE ACCESSORY PANEL NO CLOSER TO AVOID INTERFERENCE WITH VENT/CHECK VALVES, TRAVEL STOPS, OR UPPER MOUNTING PAD SURFACE



ADJUSTABLE END STOPS AND JACKSCREWS



Notes:

Not certified dimensional drawings. Such drawings are available on request. Contact factory with correct model designation and serial number. All dimensions are expressed in inches.

Table 3.

	X (-ETS) Extended Travel Stop	X End Stop	Z (M3/M3HW) Jackscrew
Power Module	27.32	20.41	29.55
Blind End Cap Module	15.83	8.92	17.43
Spring Module	47.65	40.31	46.63
Hydraulic Override Module	27.71	21.59	N/A

BETTIS[™]

EMERSON[™]

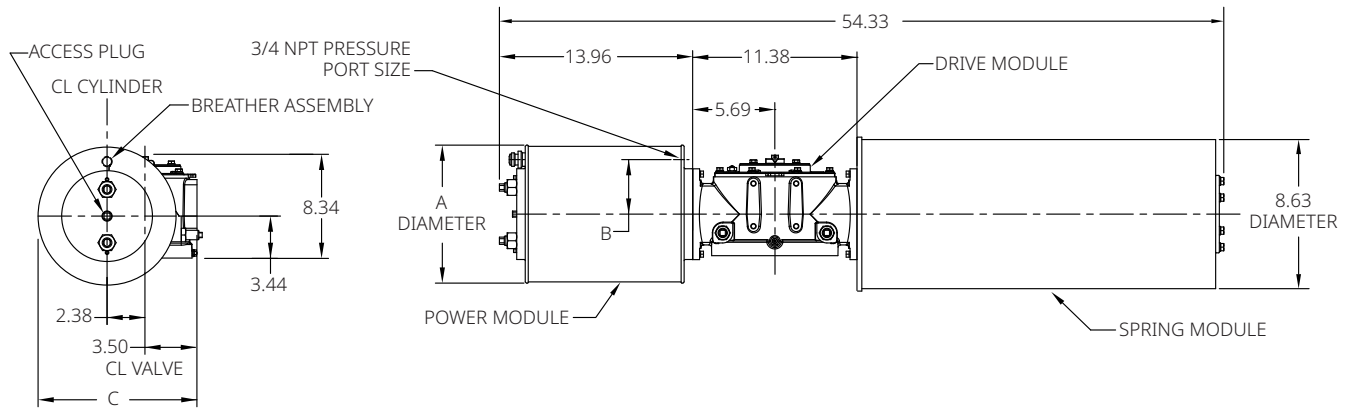
Data sheet

Document No.: VCPDS-13967-US

Date: June 2024

G/GC-Series

Spring-Return Actuators G010XX-SR/GC010XX-SR (CW Model Shown)



Notes:

Not certified dimensional drawings. Such drawings are available on request.
Contact factory with correct model designation and serial number.
All dimensions are expressed in inches.

Table 4.

Actuator Model	A	B	C
G01008-SR/GC01008-SR	8.75	3.19	10.25
G01009-SR/GC01009-SR	9.88	3.78	10.82
G01010-SR/GC01010-SR	11.00	4.38	11.38
G01012-SR/GC01012-SR	13.00	5.00	12.38
G01014-SR/GC01014-SR	14.25	5.50	13.00

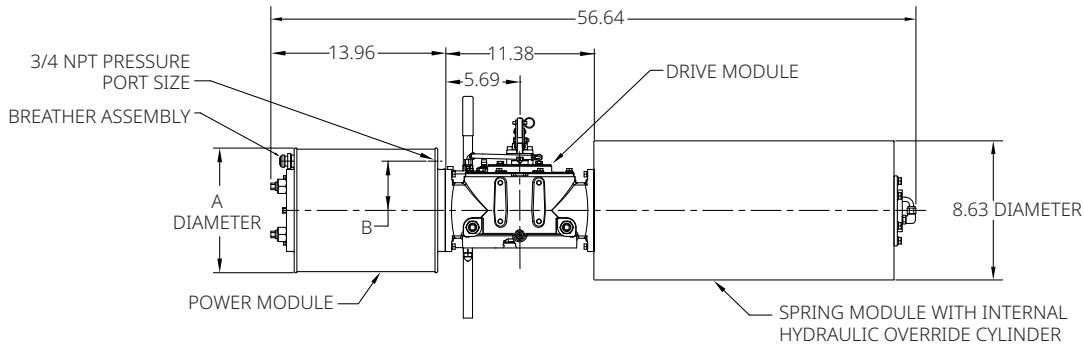
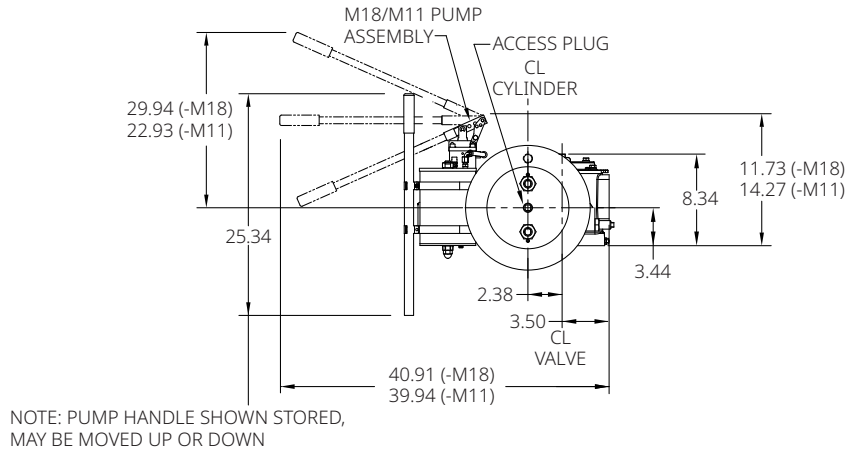
Data sheet

Document No.: VCPDS-13967-US

Date: June 2024

G/GC-Series

G010XX-SR-M18/GC010XX-SR-M18 G010XX-SR-M11/GC010XX-SR-M11 (CW Model Shown)



Notes:
Not certified dimensional drawings. Such drawings are available on request.
Contact factory with correct model designation and serial number.
All dimensions are expressed in inches.

Table 5.

Actuator Model	A	B
G01008-SR-M18/GC01008-SR-M18	8.75	3.25
G01009-SR-M18/GC01009-SR-M18	9.88	3.78
G01010-SR-M18/GC01010-SR-M18	11.00	4.38
G01012-SR-M18/GC01012-SR-M18	13.00	5.00
G01014-SR-M18/GC01014-SR-M18	14.25	5.50

Note:
Dimensions A and B remain the same in case -M11 in actuator model.

BETTIS™

EMERSON™

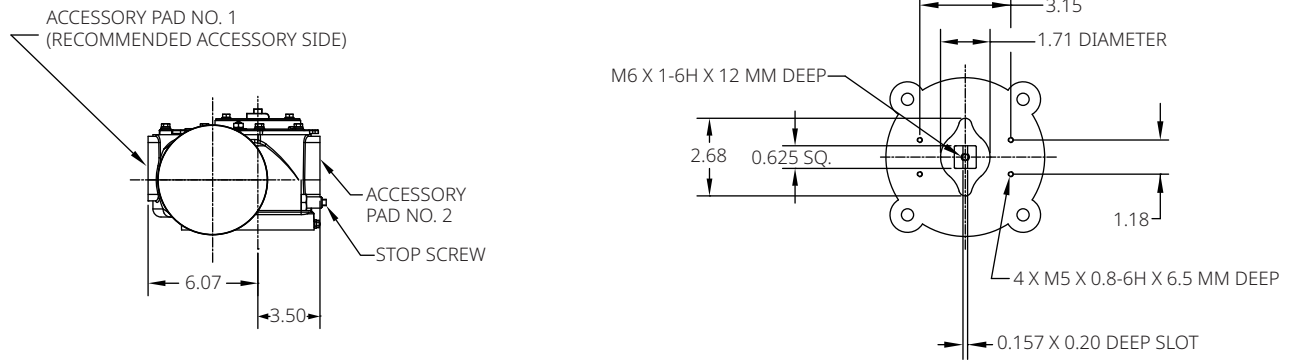
Data sheet

Document No.: VCPDS-13967-US

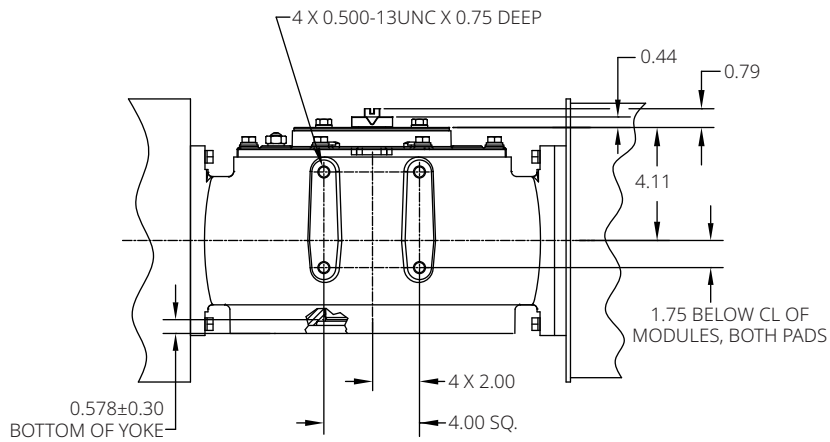
Date: June 2024

G/GC-Series

Spring-Return Actuators Accessory Details



ACCESSORY PAD NO. 1 DETAIL



Notes:

Not certified dimensional drawings. Such drawings are available on request.
Contact factory with correct model designation and serial number.
All dimensions are expressed in inches.

BETTIS[™]


EMERSON[™]

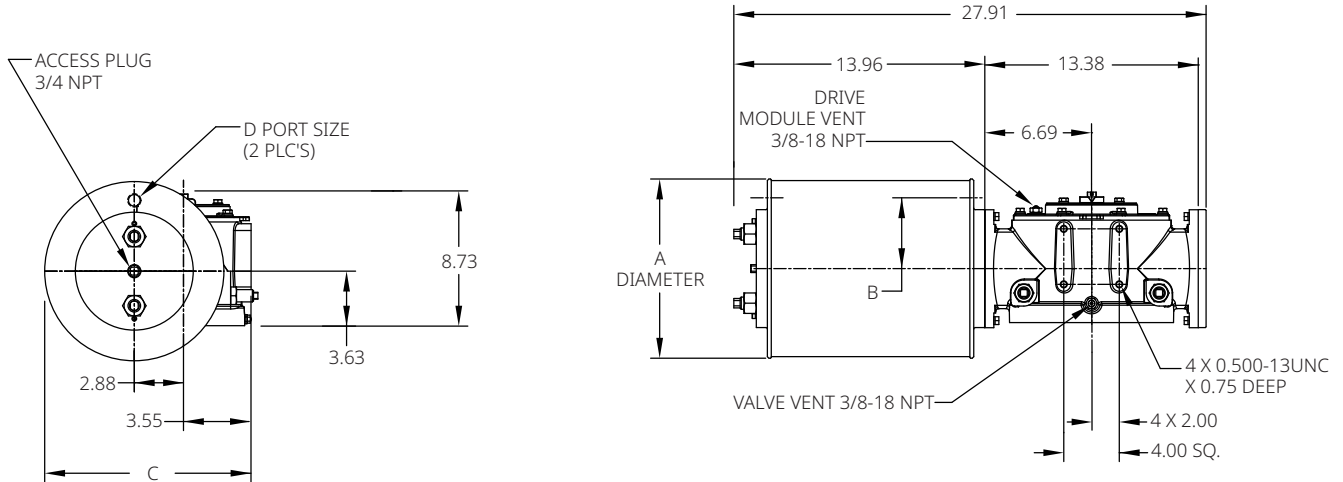
Data sheet

Document No.: VCPDS-13967-US

Date: June 2024

G/GC-Series

Double-Acting Actuators G20XX/GC20XX (CW Model Shown)



Notes:

Not certified dimensional drawings. Such drawings are available on request.
Contact factory with correct model designation and serial number.
All dimensions are expressed in inches.

Table 6.

Actuator Model	A	B	C	D
G2009/GC2009	9.88	3.38	11.38	3/4 NPT
G2010/GC2010	11.00	4.38	11.97	3/4 NPT
G2012/GC2012	13.00	5.00	12.93	3/4 NPT
G2014/GC2014	14.25	5.50	13.56	3/4 NPT
G2016/GC2016	16.25	6.25	14.56	3/4 NPT

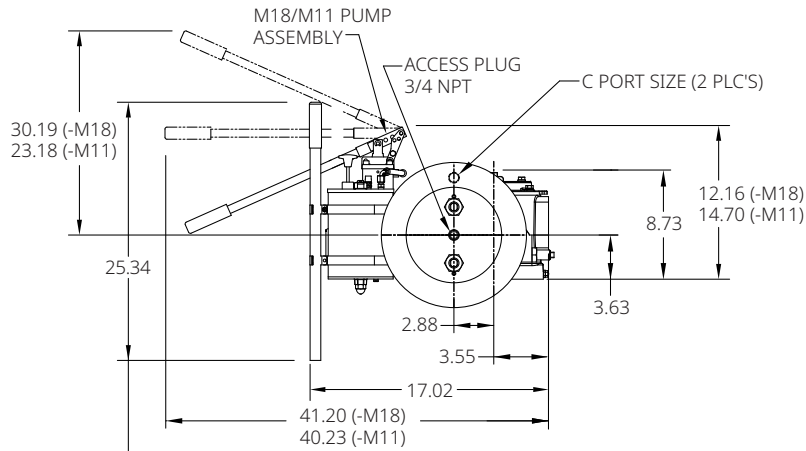
Data sheet

Document No.: VCPDS-13967-US

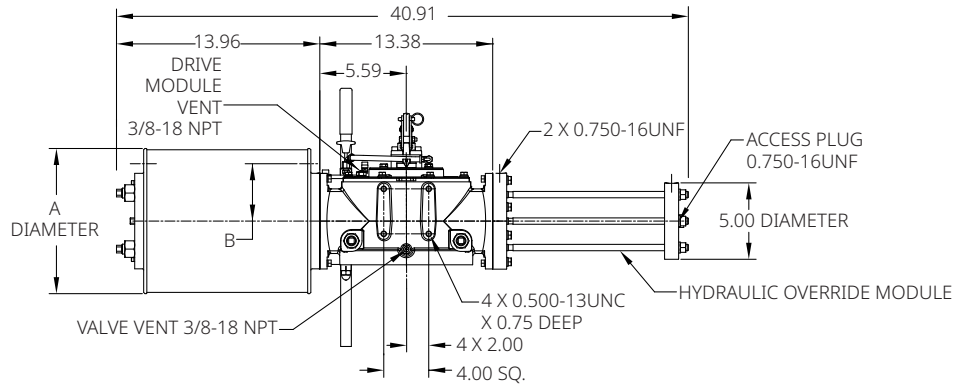
Date: June 2024

G/GC-Series

G20XX-M18/GC20XX-M18 G20XX-M11/GC20XX-M11 (CW Model Shown))



NOTE: PUMP HANDLE SHOWN STORED, MAY BE MOVED UP OR DOWN



Notes:

Not certified dimensional drawings. Such drawings are available on request. Contact factory with correct model designation and serial number. All dimensions are expressed in inches.

Table 7.

Actuator Model	A	B	C
G2009-M18/GC2009-M18	9.88	3.38	3/4 NPT
G2010-M18/GC2010-M18	11.00	4.38	3/4 NPT
G2012-M18/GC2012-M18	13.00	5.00	3/4 NPT
G2014-M18/GC2014-M18	14.25	5.50	3/4 NPT
G2016-M18/GC2016-M18	16.25	6.25	3/4 NPT

Note:

Dimensions A, B and C remain the same in case -M11 in actuator model.

BETTIS[™]

EMERSON[™]

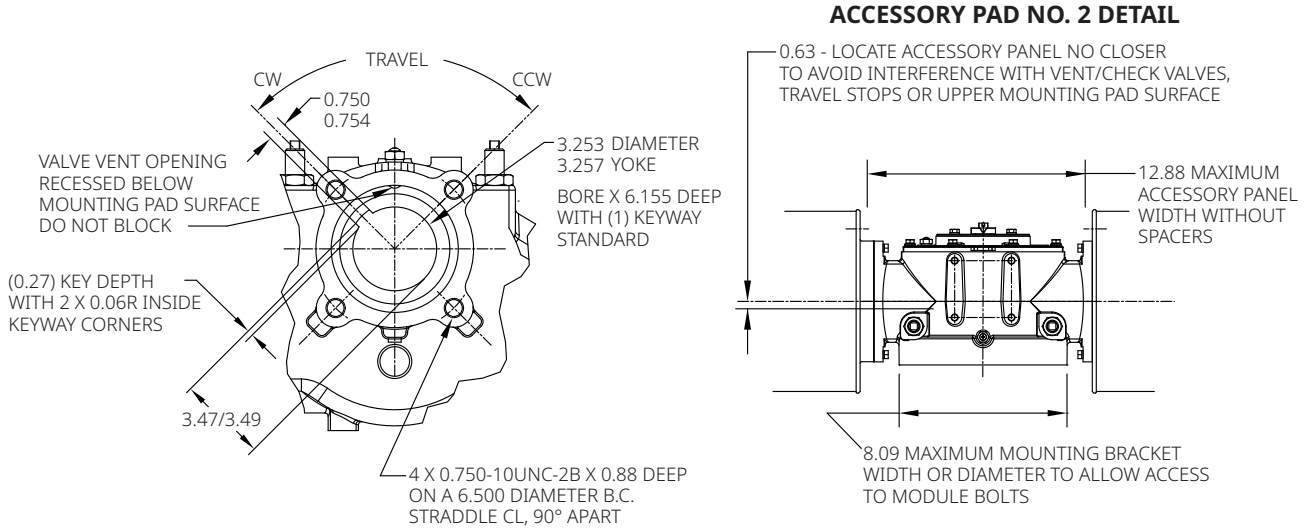
Data sheet

Document No.: VCPDS-13967-US

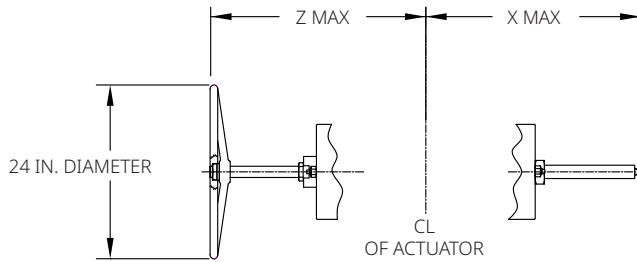
Date: June 2024

G/GC-Series

Double-Acting Actuators Valve/Accessory Mounting Details



ADJUSTABLE END STOPS



Notes:

Not certified dimensional drawings. Such drawings are available on request. Contact factory with correct model designation and serial number. All dimensions are expressed in inches.

Table 8.

	X (-ETS) Extended Travel Stop	X End Stop	Z (M3/M3HW) Jackscrew
Power Module	28.32	21.41	35.07
Blind End Cap Module	16.83	9.92	22.55
Spring Module	48.22	41.31	50.35

BETTIS™

EMERSON™

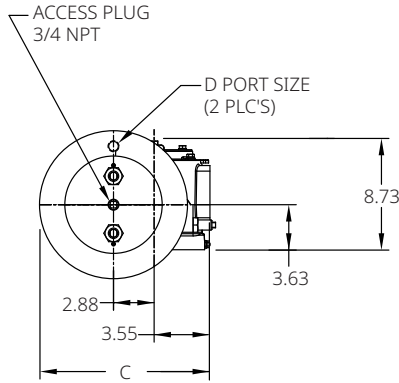
Data sheet

Document No.: VCPDS-13967-US

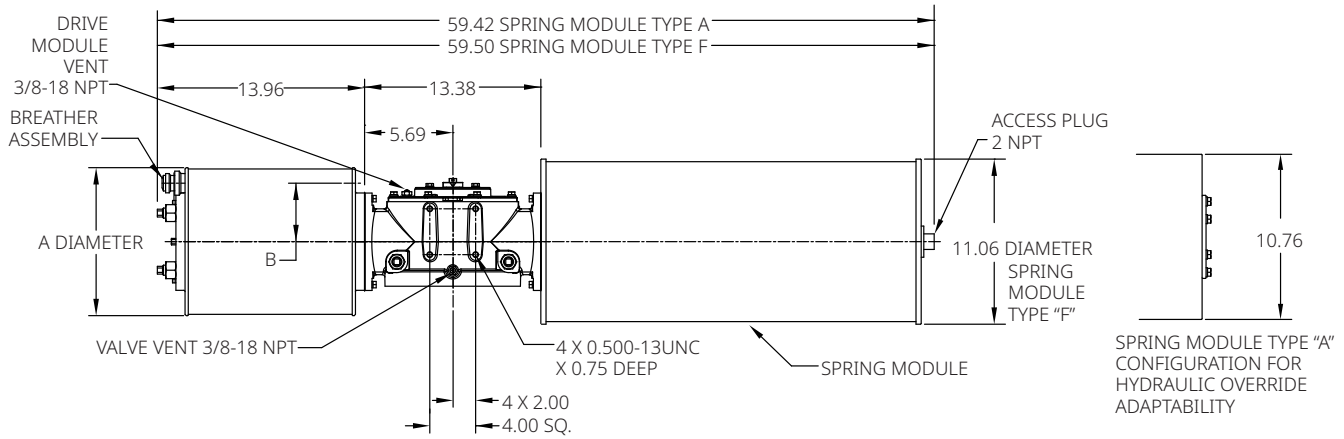
Date: June 2024

G/GC-Series

Spring-Return Actuators G20XX-SR/GC20XX-SR (CW Model Shown)



(DIMENSION REFLECTS LARGEST OF EITHER CYLINDER)



Notes:

Not certified dimensional drawings. Such drawings are available on request.
Contact factory with correct model designation and serial number.
All dimensions are expressed in inches.

Table 9.

Actuator Model	A	B	C	D
G2009-SR/GC2009-SR	9.88	3.38	11.38	3/4 NPT
G2010-SR/GC2010-SR	11.00	4.38	11.97	3/4 NPT
G2012-SR/GC2012-SR	13.00	5.00	12.93	3/4 NPT
G2014-SR/GC2014-SR	14.25	5.50	13.56	3/4 NPT
G2016-SR/GC2016-SR	16.25	6.25	14.56	3/4 NPT

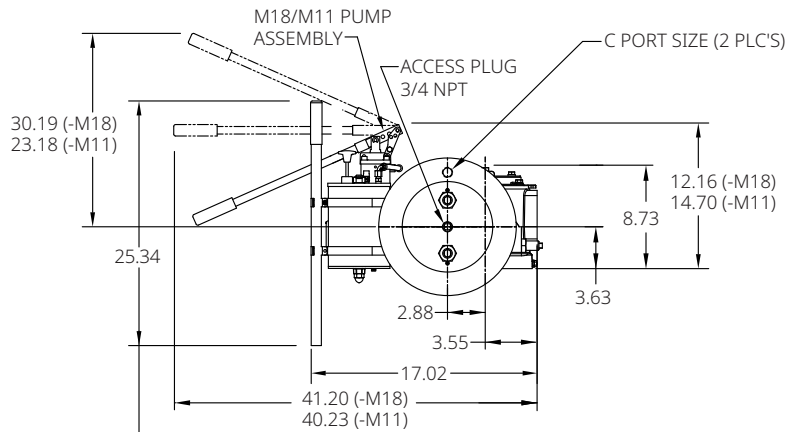
Data sheet

Document No.: VCPDS-13967-US

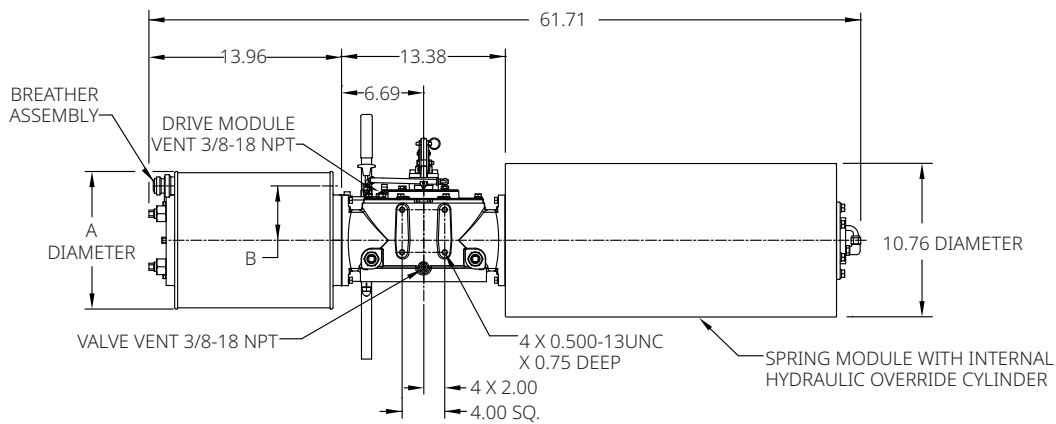
Date: June 2024

G/GC-Series

G20XX-SR-M18/GC20XX-SR-M18 G20XX-SR-M11/GC20XX-SR-M11 (CW Model Shown)



NOTE: PUMP HANDLE SHOWN STORED, MAY BE MOVED UP OR DOWN



Notes:

Not certified dimensional drawings. Such drawings are available on request. Contact factory with correct model designation and serial number. All dimensions are expressed in inches.

Table 10.

Actuator Model	A	B	C
G2009-SR-M18/GC2009-SR-M18	9.88	3.38	3/4 NPT
G2010-SR-M18/GC2010-SR-M18	11.00	4.38	3/4 NPT
G2012-SR-M18/GC2012-SR-M18	13.00	5.00	3/4 NPT
G2014-SR-M18/GC2014-SR-M18	14.25	5.50	3/4 NPT
G2016-SR-M18/GC2016-SR-M18	16.25	6.25	3/4 NPT

Note:

Dimensions A, B and C remain the same in case -M11 in actuator model.

BETTIS[™]

EMERSON[™]

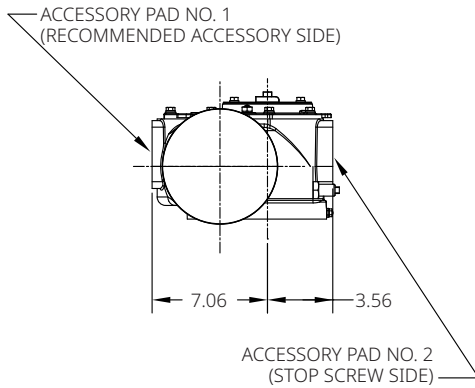
Data sheet

Document No.: VCPDS-13967-US

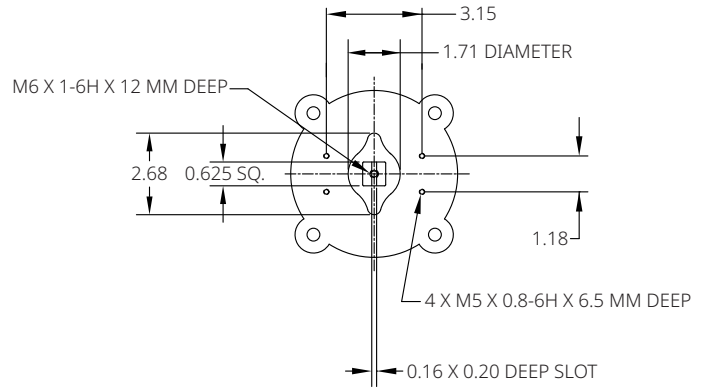
Date: June 2024

G/GC-Series

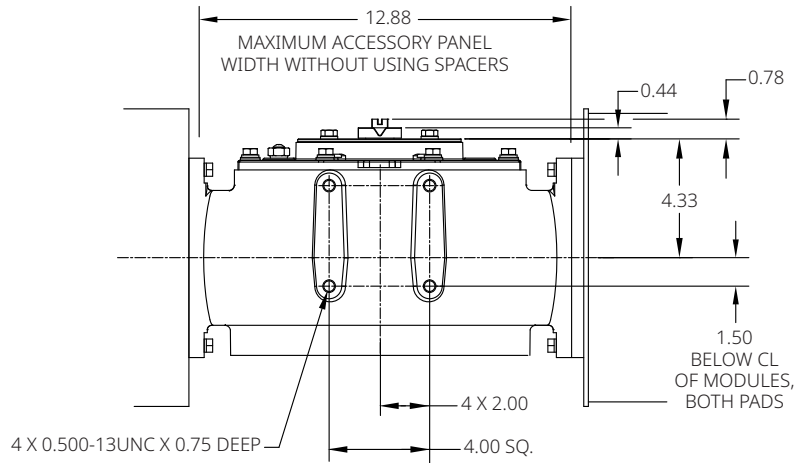
Spring-Return Actuators Accessory Details



TOPWORKS DETAIL YOKE COVER



ACCESSORY PAD NO. 1 DETAIL



Notes:

Not certified dimensional drawings. Such drawings are available on request. Contact factory with correct model designation and serial number. All dimensions are expressed in inches.

BETTIS™



EMERSON™

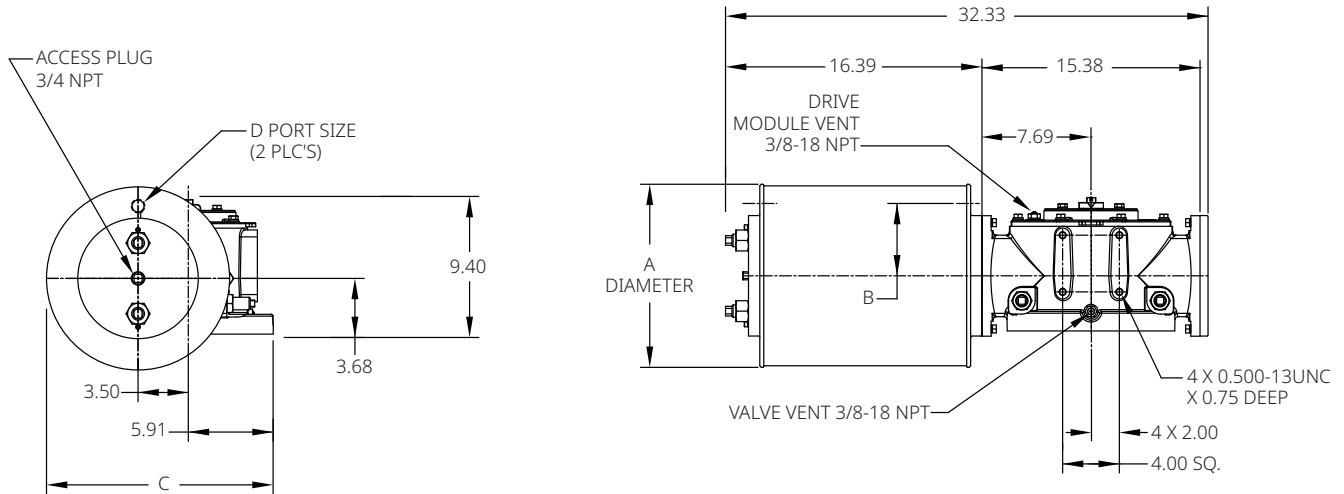
Data sheet

Document No.: VCPDS-13967-US

Date: June 2024

G/GC-Series

Double-Acting Actuators G30XX/GC30XX (CW Model Shown)



Notes:

Not certified dimensional drawings. Such drawings are available on request. Contact factory with correct model designation and serial number. All dimensions are expressed in inches.

Table 11.

Actuator Model	A	B	C	D
G3010/GC3010	11.00	4.38	14.91	3/4 NPT
G3012/GC3012	13.00	5.19	15.91	3/4 NPT
G3014/GC3014	14.25	5.68	16.53	3/4 NPT
G3016/GC3016	16.25	6.25	17.53	3/4 NPT
G3020/GC3020	20.25	8.00	19.53	3/4 NPT

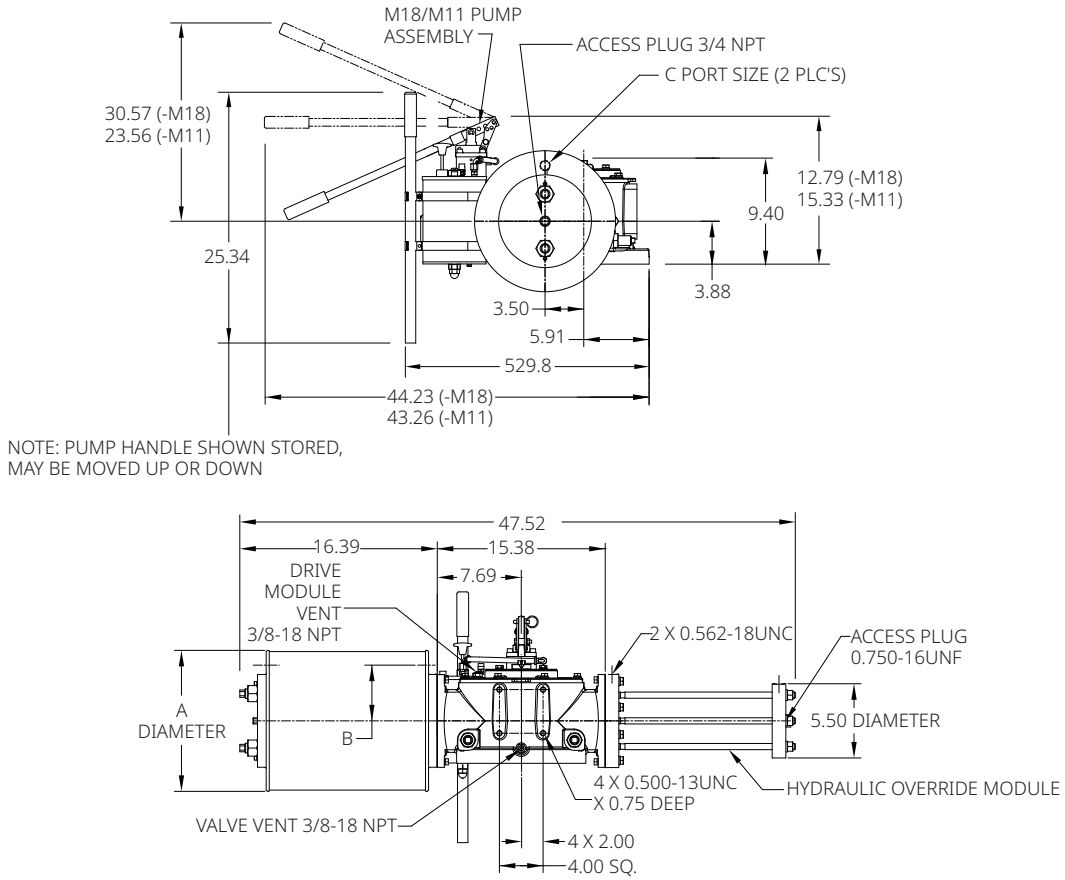
Data sheet

Document No.: VCPDS-13967-US

Date: June 2024

G/GC-Series

G30XX-M18/GC30XX-M18 G30XX-M11/GC30XX-M11 (CW Model Shown)



Notes:

Not certified dimensional drawings. Such drawings are available on request. Contact factory with correct model designation and serial number. All dimensions are expressed in inches.

Table 12.

Actuator Model	A	B	C
G3010-M18/GC3010-M18	11.00	4.38	3/4 NPT
G3012-M18/GC3012-M18	13.00	5.19	3/4 NPT
G3014-M18/GC3014-M18	14.25	5.68	3/4 NPT
G3016-M18/GC3016-M18	16.25	6.25	3/4 NPT
G3020-M18/GC3020-M18	20.25	8.00	3/4 NPT

Note:

Dimensions A, B and C remain the same in case -M11 in actuator model.



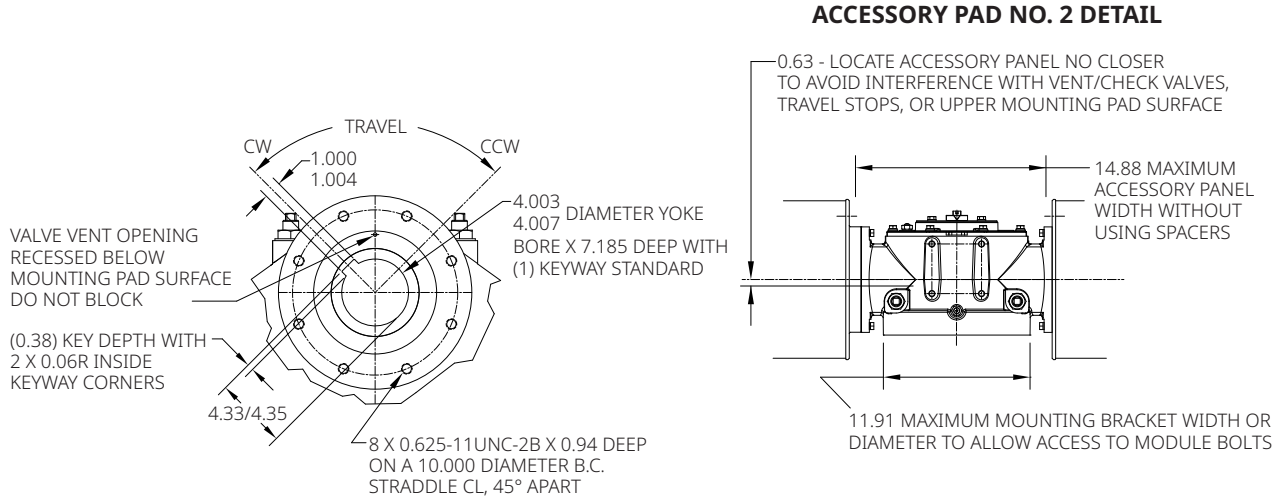
Data sheet

Document No.: VCPDS-13967-US

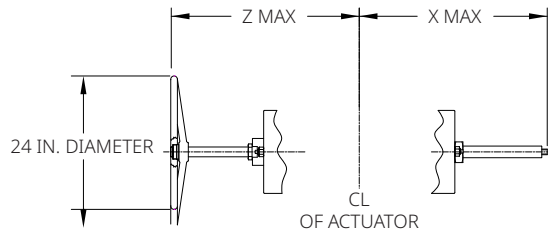
Date: June 2024

G/GC-Series

Double-Acting Actuators Valve/Accessory Mounting Details



ADJUSTABLE END STOPS AND JACKSCREWS



Notes:

Not certified dimensional drawings. Such drawings are available on request. Contact factory with correct model designation and serial number. All dimensions are expressed in inches.

Table 13.

	X (-ETS) Extended Travel Stop	X End Stop	Z (M3/M3HW) Jackscrew
Power Module	33.09	24.53	36.94
Blind End Cap Module	19.57	11.10	22.86
Spring Module	53.30	44.74	55.00

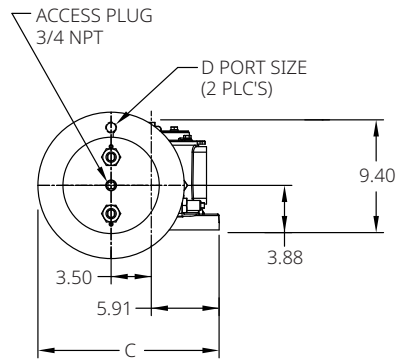
Data sheet

Document No.: VCPDS-13967-US

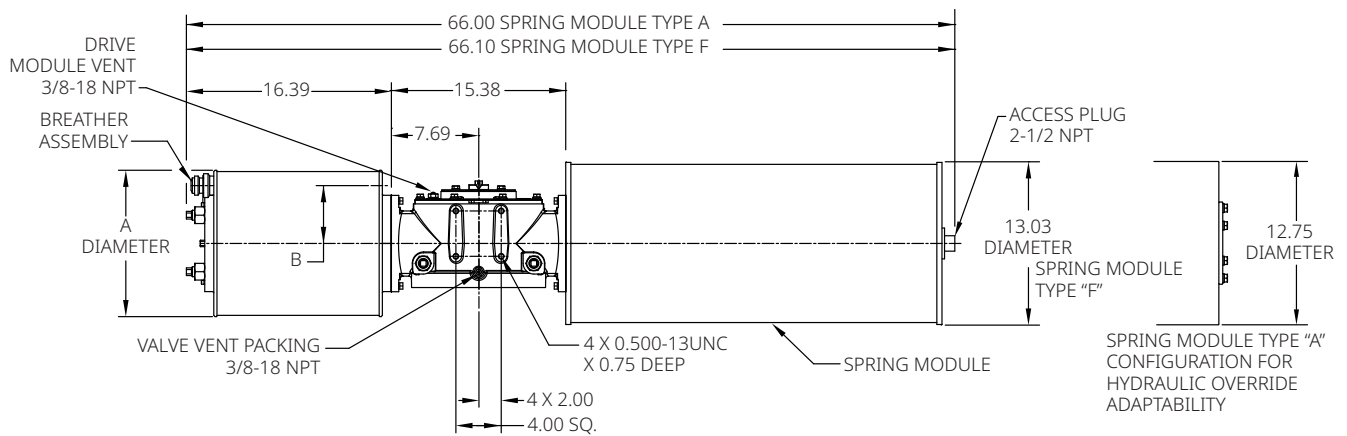
Date: June 2024

G/GC-Series

Spring-Return Actuators G30XX-SR/GC30XX-SR (CW Model Shown)



(DIMENSION REFLECTS LARGEST OF EITHER CYLINDER)



Notes:

Not certified dimensional drawings. Such drawings are available on request.
Contact factory with correct model designation and serial number.
All dimensions are expressed in inches.

Table 14.

Actuator Model	A	B	C	D
G3010-SR/GC3010-SR	11.00	4.38	14.91	3/4 NPT
G3012-SR/GC3012-SR	13.00	5.19	15.91	3/4 NPT
G3014-SR/GC3014-SR	14.25	5.68	16.53	3/4 NPT
G3016-SR/GC3016-SR	16.25	6.25	17.53	3/4 NPT
G3020-SR/GC3020-SR	20.25	8.00	19.53	3/4 NPT

BETTIS™

EMERSON™

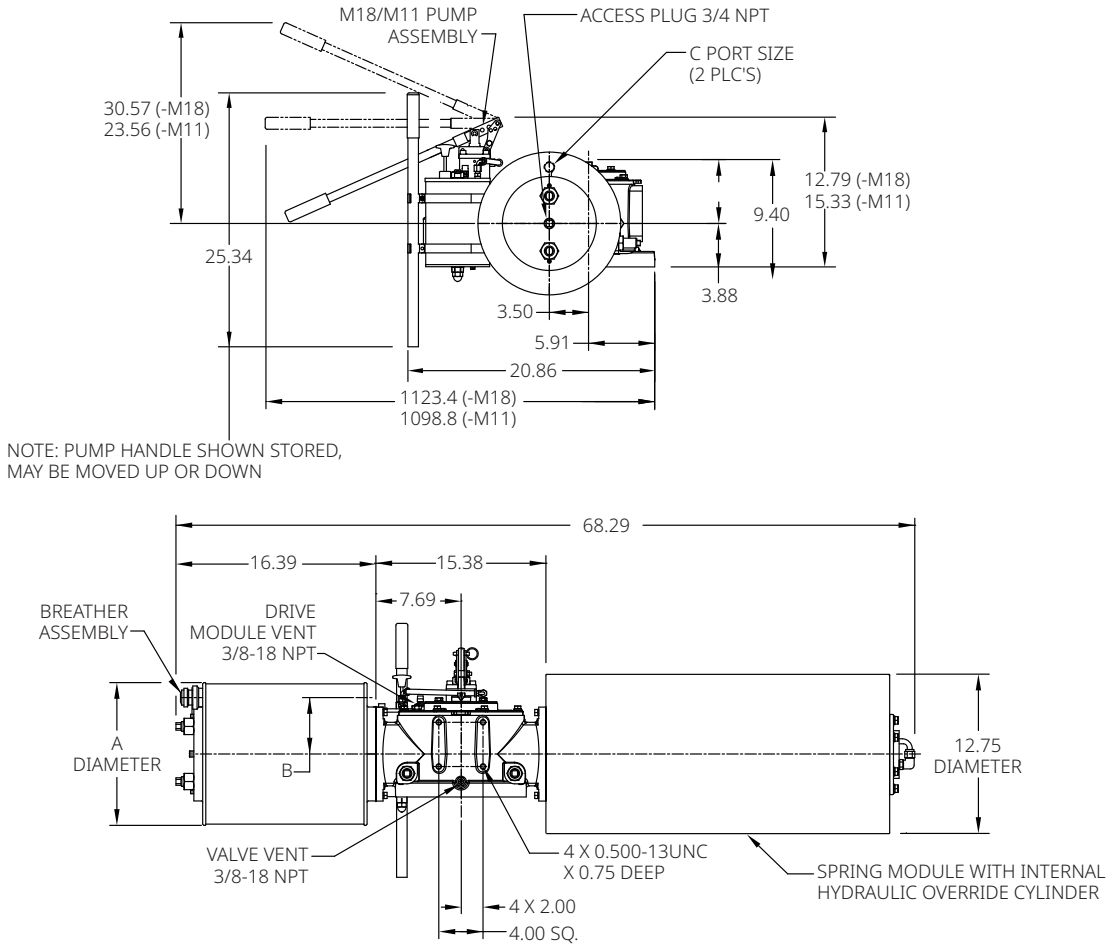
Data sheet

Document No.: VCPDS-13967-US

Date: June 2024

G/GC-Series

G30XX-SR-M18/GC30XX-SR-M18 G30XX-SR-M11/GC30XX-SR-M11 (CW Model Shown)



Notes:

Not certified dimensional drawings. Such drawings are available on request. Contact factory with correct model designation and serial number. All dimensions are expressed in inches.

Table 15.

Actuator Model	A	B	C
G3010-SR-M18/GC3010-SR-M18	11.00	4.38	3/4 NPT
G3012-SR-M18/GC3012-SR-M18	13.00	5.19	3/4 NPT
G3014-SR-M18/GC3014-SR-M18	14.25	5.68	3/4 NPT
G3016-SR-M18/GC3016-SR-M18	16.25	6.25	3/4 NPT
G3020-SR-M18/GC3020-SR-M18	20.25	8.00	3/4 NPT

Note:

Dimensions A, B and C remain the same in case -M11 in actuator model.

BETTIS™

EMERSON™

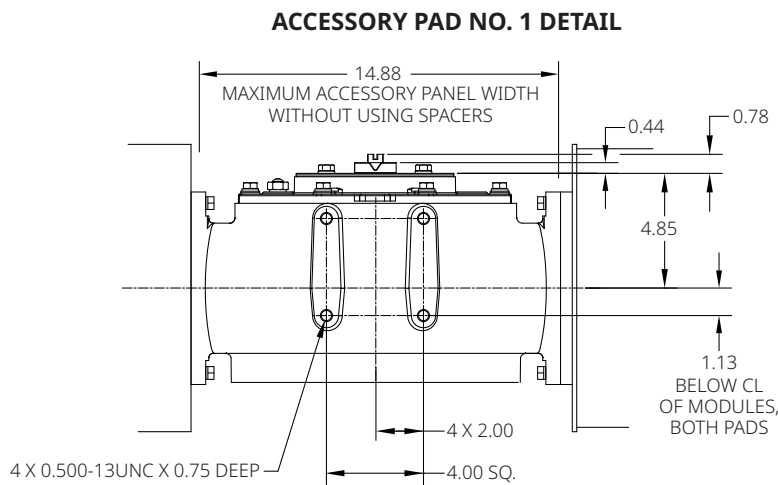
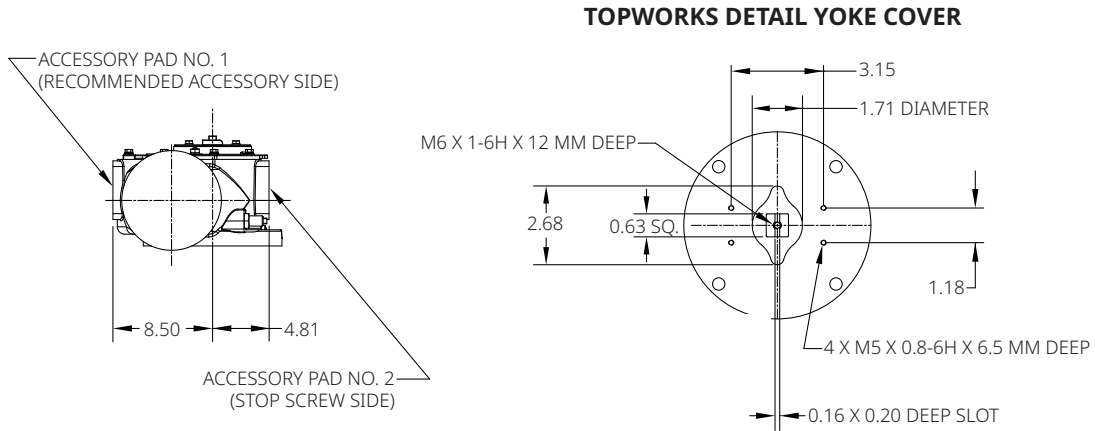
Data sheet

Document No.: VCPDS-13967-US

Date: June 2024

G/GC-Series

Spring-Return Actuators Accessory Details



Notes:

Not certified dimensional drawings. Such drawings are available on request.

Contact factory with correct model designation and serial number.

All dimensions are expressed in inches.

BETTIS™



EMERSON™

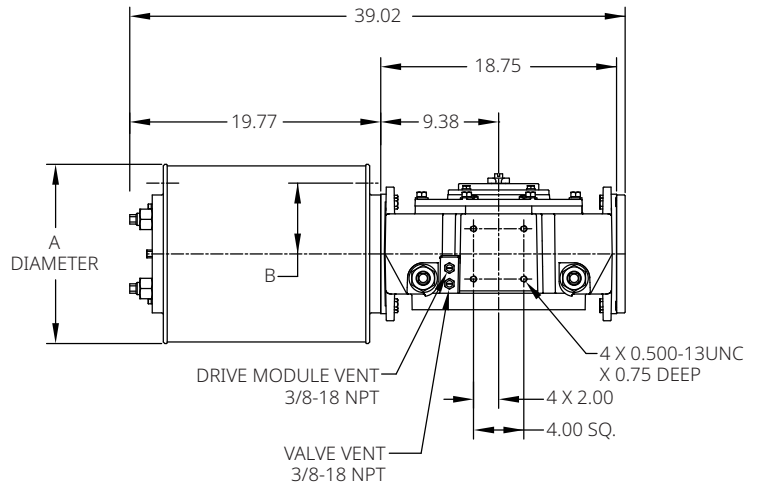
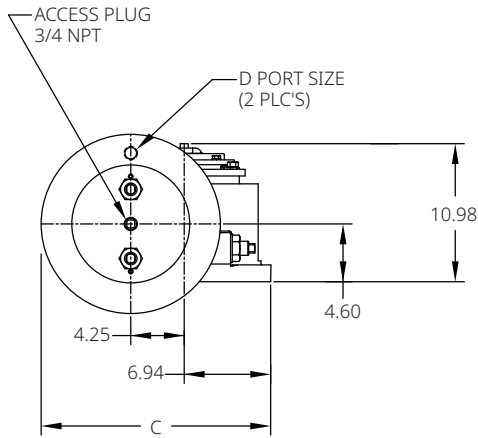
Data sheet

Document No.: VCPDS-13967-US

Date: June 2024

G/GC-Series

Double-Acting Actuators G40XX/GC40XX (CW Model Shown)



Notes:

Not certified dimensional drawings. Such drawings are available on request.
Contact factory with correct model designation and serial number.
All dimensions are expressed in inches.

Table 16.

Actuator Model	A	B	C	D
G4012/GC4012	13.00	5.44	17.69	3/4 NPT
G4014/GC4014	14.25	5.63	18.32	3/4 NPT
G4016/GC4016	16.25	6.25	19.32	3/4 NPT
G4020/GC4020	20.25	8.13	21.32	3/4 NPT
G4024/G4024	24.25	9.63	23.32	3/4 NPT
G4028/GC4028	29.00	11.50	25.69	1.0 NPT

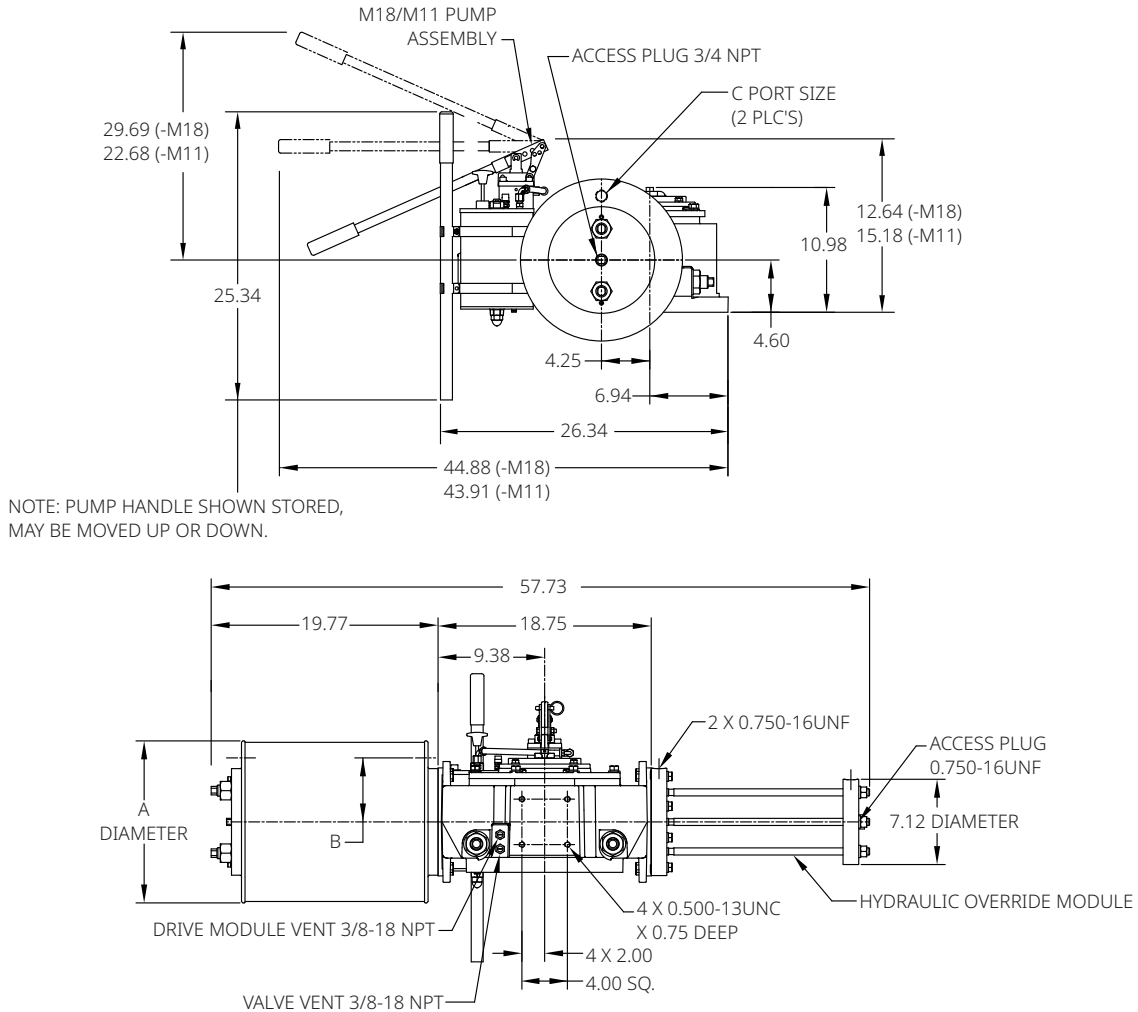
Data sheet

Document No.: VCPDS-13967-US

Date: June 2024

G/GC-Series

G40XX-M18/GC40XX-M18 G40XX-M11/GC40XX-M11 (CW Model Shown)



Notes:

Not certified dimensional drawings. Such drawings are available on request.

Contact factory with correct model designation and serial number.

All dimensions are expressed in inches.

Table 17.

Actuator Model	A	B	C
G4012-M18/GC4012-M18	13.00	5.44	3/4 NPT
G4014-M18/GC4014-M18	14.25	5.63	3/4 NPT
G4016-M18/GC4016-M18	16.25	6.25	3/4 NPT
G4020-M18/GC4020-M18	20.25	8.13	3/4 NPT
G4024-M18/GC4024-M18	24.25	9.63	3/4 NPT
G4028-M18/GC4028-M18	29.00	11.50	1.0 NPT

Note:

Dimensions A, B and C remain the same in case -M11 in actuator model.



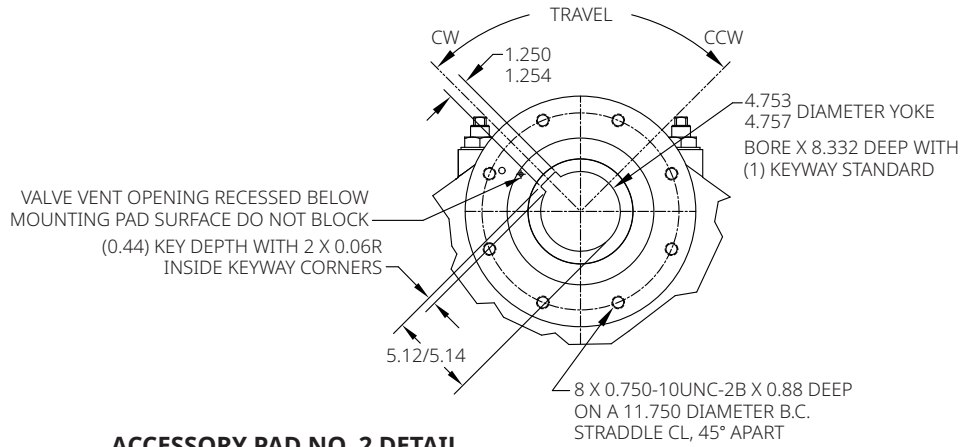
Data sheet

Document No.: VCPDS-13967-US

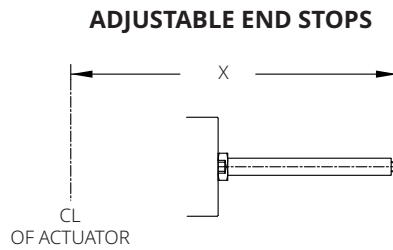
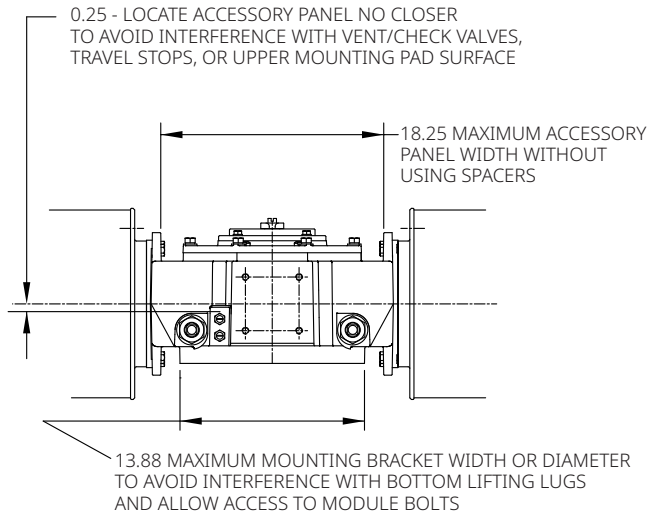
Date: June 2024

G/GC-Series

Double-Acting Actuators Valve/Accessory Mounting Details



ACCESSORY PAD NO. 2 DETAIL



Notes:

Not certified dimensional drawings. Such drawings are available on request. Contact factory with correct model designation and serial number. All dimensions are expressed in inches.

Table 18.

	X Extended Travel Stop	X End Stop
Power Module	39.74	31.12
Blind End Cap Module	23.32	14.70
Spring Module	60.61	52.00

BETTIS™

EMERSON™

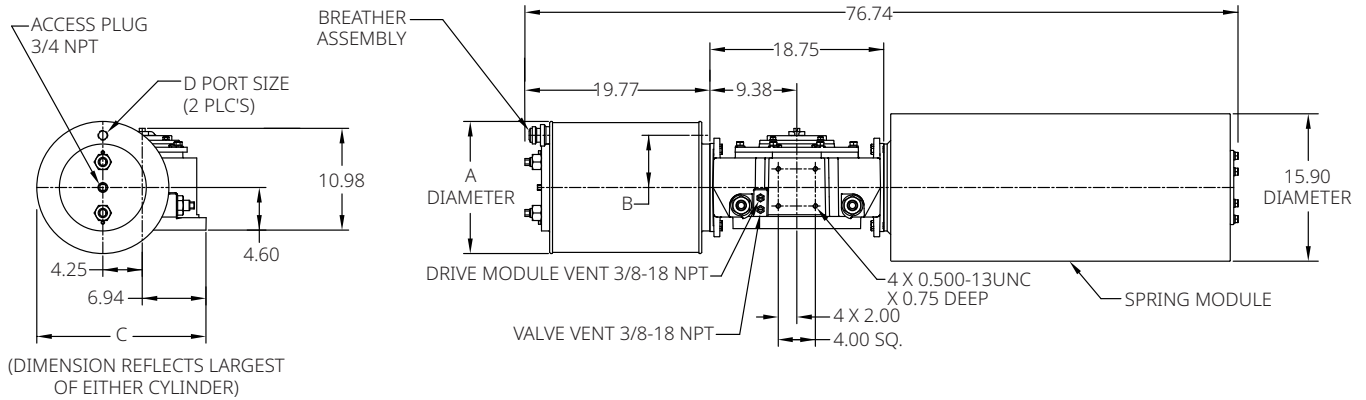
Data sheet

Document No.: VCPDS-13967-US

Date: June 2024

G/GC-Series

Spring-Return Actuators G40XX-SRX/GC40XX-SRX (CW Model Shown)



Notes:

Not certified dimensional drawings. Such drawings are available on request. Contact factory with correct model designation and serial number. All dimensions are expressed in inches.

Table 19.

Actuator Model	A	B	C	D
G4012-SR/GC4012-SR	13.00	5.44	19.14	3/4 NPT
G4014-SR/GC4014-SR	14.25	5.63	19.14	3/4 NPT
G4016-SR/GC4016-SR	16.25	6.25	19.32	3/4 NPT
G4020-SR/GC4020-SR	20.25	8.13	21.32	3/4 NPT
G4024-SR/GC4024-SR	24.25	9.63	23.32	3/4 NPT
G4028-SR/GC4028-SR	29.00	11.50	25.69	1.0 NPT

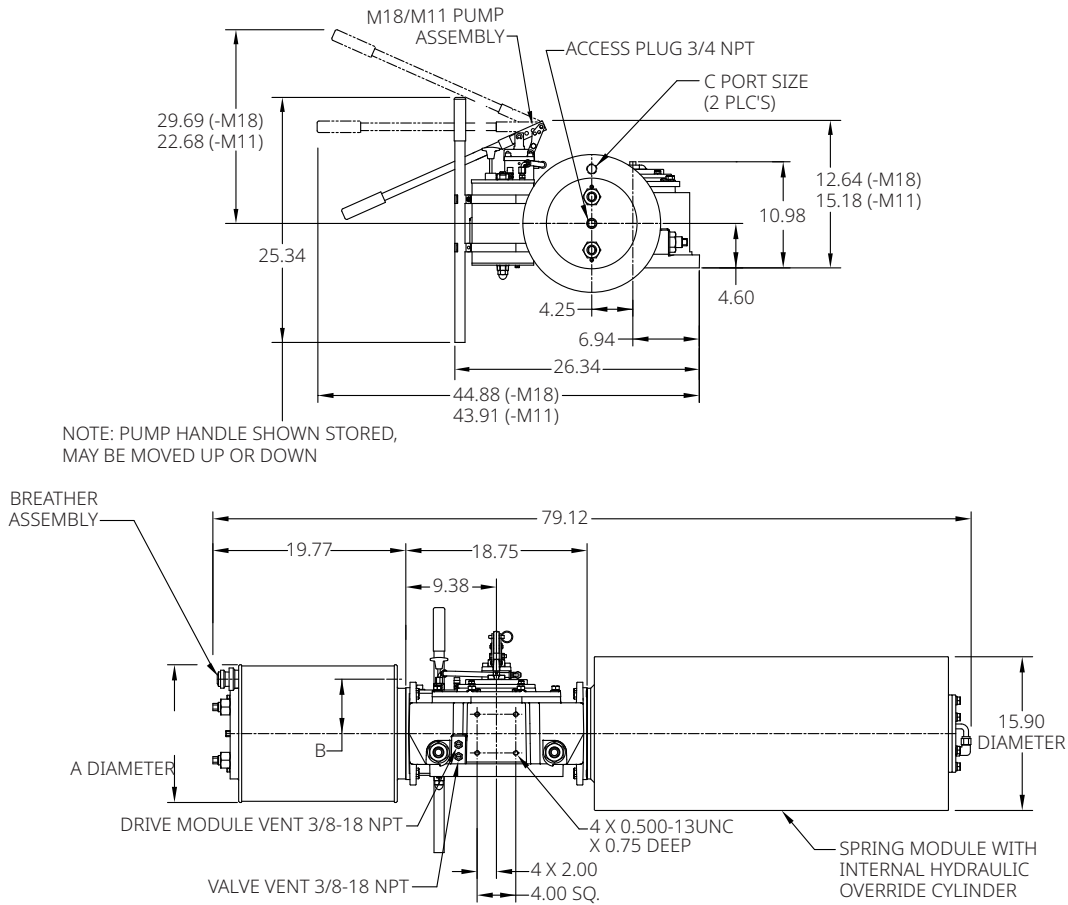
Data sheet

Document No.: VCPDS-13967-US

Date: June 2024

G/GC-Series

G40XX-SR-M18/GC40XX-SR-M18 G40XX-SR-M11/GC40XX-SR-M11 (CW Model Shown)



Notes:

Not certified dimensional drawings. Such drawings are available on request. Contact factory with correct model designation and serial number. All dimensions are expressed in inches.

Table 20.

Actuator Model	A	B	C
G4012-SR-M18/GC4012-SR-M18	13.00	5.44	3/4 NPT
G4014-SR-M18/GC4014-SR-M18	14.25	5.63	3/4 NPT
G4016-SR-M18/GC4016-SR-M18	16.25	6.25	3/4 NPT
G4020-SR-M18/GC4020-SR-M18	20.25	8.13	3/4 NPT
G4024-SR-M18/GC4024-SR-M18	24.25	9.63	3/4 NPT
G4028-SR-M18/GC4028-SR-M18	29.00	11.50	1.0 NPT

Note:

Dimensions A, B and C remain the same in case -M11 in actuator model.

BETTIS[™]

EMERSON[™]

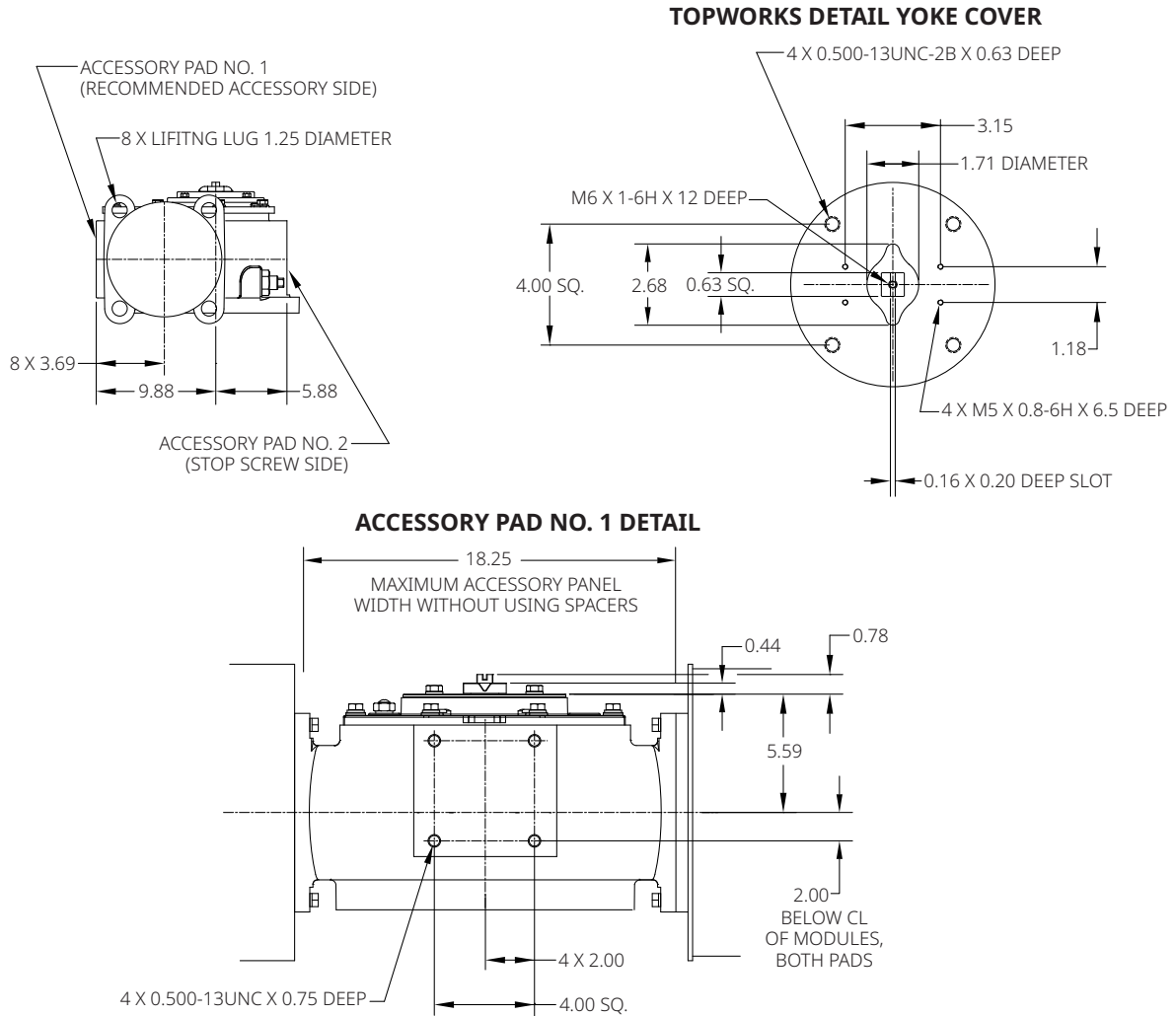
Data sheet

Document No.: VCPDS-13967-US

Date: June 2024

G/GC-Series

Spring-Return Actuators Lug/Accessory Details



Notes:

Not certified dimensional drawings. Such drawings are available on request.
Contact factory with correct model designation and serial number.
All dimensions are expressed in inches.

BETTIS™



EMERSON™

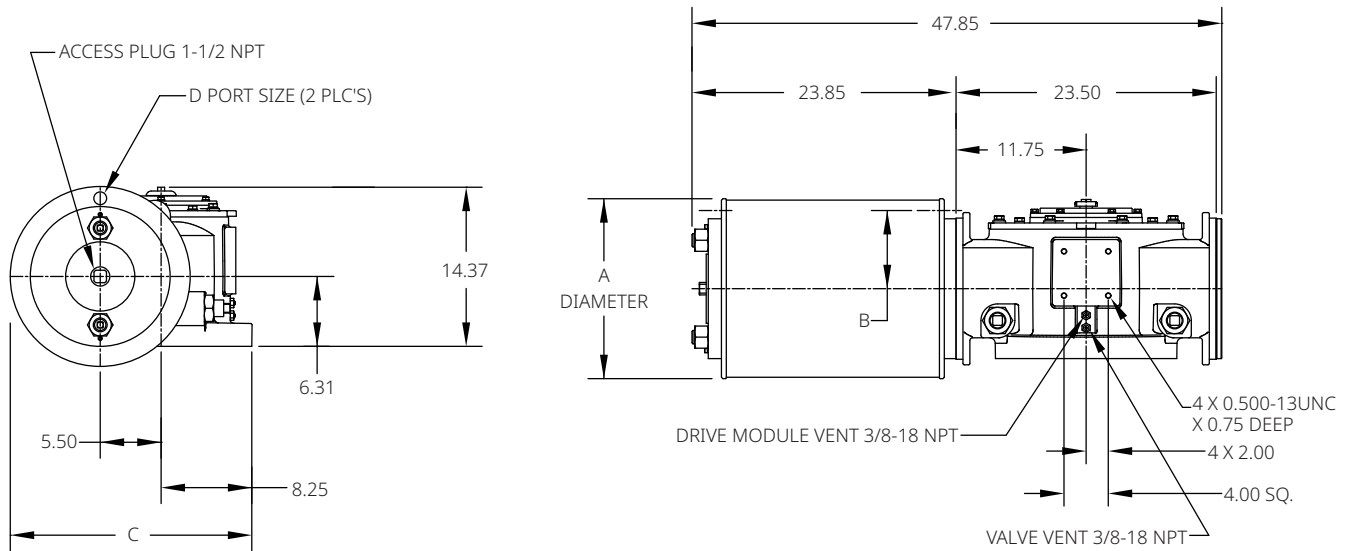
Data sheet

Document No.: VCPDS-13967-US

Date: June 2024

G/GC-Series

Double-Acting Actuators G50XX/GC50XX (CW Model Shown)



Notes:

Not certified dimensional drawings. Such drawings are available on request.
Contact factory with correct model designation and serial number.
All dimensions are expressed in inches.

Table 21.

Actuator Model	A	B	C	D
G5016/GC5016	16.25	7.06	21.88	3/4 NPT
G5020/GC5020	20.25	8.00	23.88	3/4 NPT
G5024/GC5024	24.25	9.25	25.88	1 NPT
G5028/GC5028	29.00	12.06	28.25	1 NPT
G5032/GC5032	33.00	14.00	30.25	1-1/2 NPT
G5036/GC5036	37.25	16.00	32.38	1-1/2 NPT

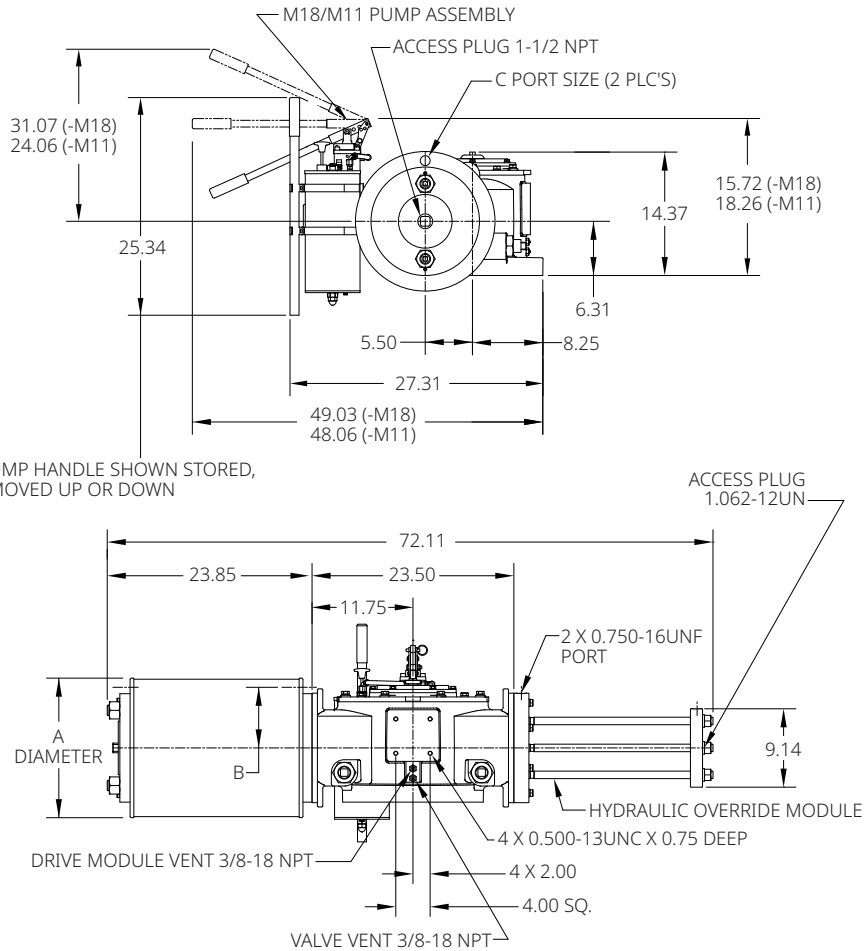
Data sheet

Document No.: VCPDS-13967-US

Date: June 2024

G/GC-Series

G50XX-M18/GC50XX-M18 G50XX-M11/GC50XX-M11 (CW Model Shown)



Notes:

Not certified dimensional drawings. Such drawings are available on request.
Contact factory with correct model designation and serial number.
All dimensions are expressed in inches.

Table 22.

Actuator Model	A	B	C
G5016-M18/GC5016-M18	16.25	7.06	3/4 NPT
G5020-M18/GC5020-M18	20.25	8.00	3/4 NPT
G5024-M18/GC5024-M18	24.25	9.25	1 NPT
G5028-M18/GC5028-M18	29.00	12.06	1 NPT
G5032-M18/GC5032-M18	33.00	14.00	1-1/2 NPT
G5036-M18/GC5036-M18	37.25	16.00	1-1/2 NPT

Note:

Dimensions A, B and C remain the same in case -M11 in actuator model.

BETTIS™

EMERSON™

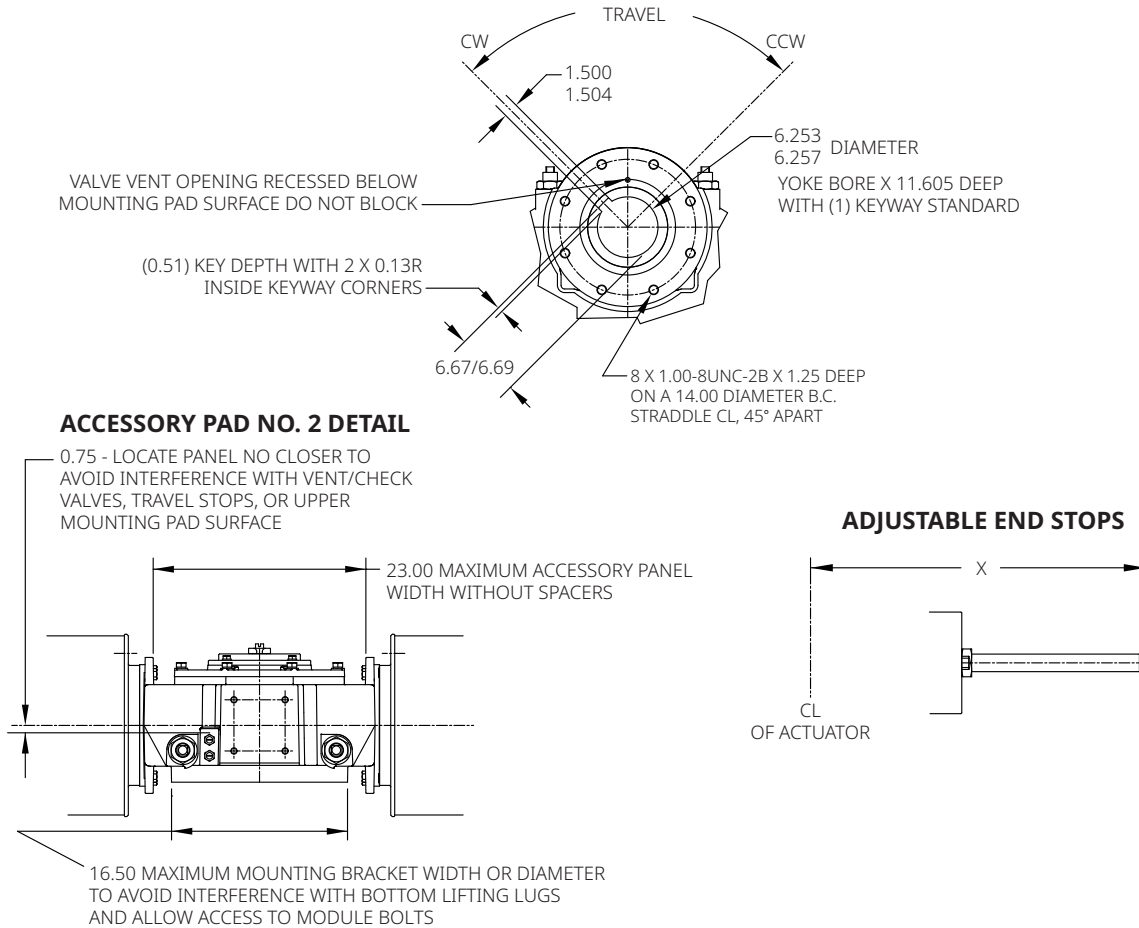
Data sheet

Document No.: VCPDS-13967-US

Date: June 2024

G/GC-Series

Double-Acting Actuators Valve/Accessory Mounting Details



Notes:

Not certified dimensional drawings. Such drawings are available on request. Contact factory with correct model designation and serial number. All dimensions are expressed in inches.

Table 23.

	X Extended Travel Stop	X End Stop
Power Module	50.07	38.58
Blind End Cap Module	28.25	17.38
Spring Module	70.50	42.48

BETTIS™

EMERSON™

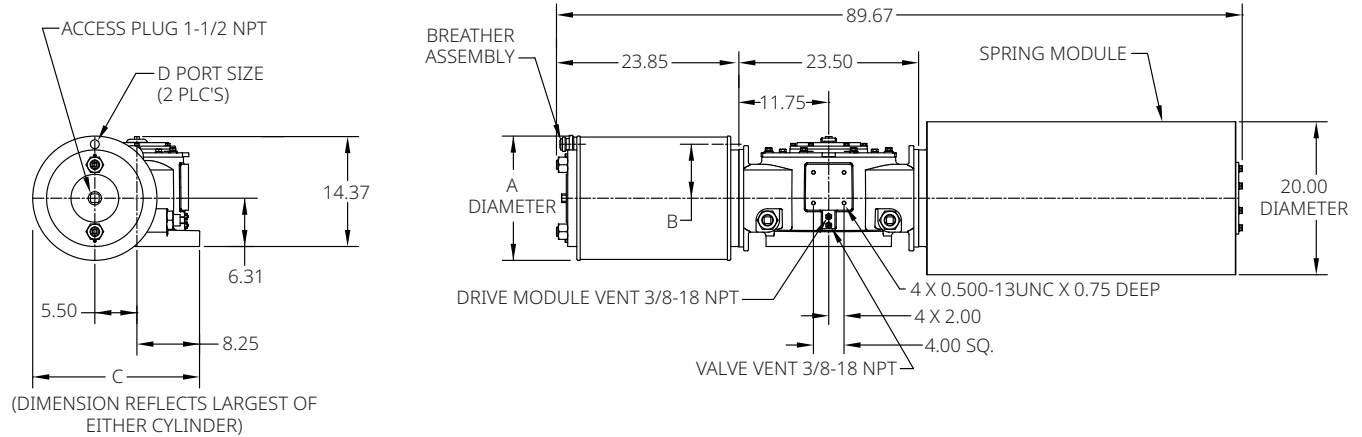
Data sheet

Document No.: VCPDS-13967-US

Date: June 2024

G/GC-Series

Spring-Return Actuators G50XX-SR/GC50XX-SR (CW Model Shown)



Notes:

Not certified dimensional drawings. Such drawings are available on request.
Contact factory with correct model designation and serial number.
All dimensions are expressed in inches.

Table 24.

Actuator Model	A	B	C	D
G5016-SR/GC5016-SR	16.25	7.06	23.75	3/4 NPT
G5020-SR/GC5020-SR	20.25	8.00	23.88	3/4 NPT
G5024-SR/GC5024-SR	24.25	9.25	25.88	1 NPT
G5028-SR/GC5028-SR	29.00	12.06	28.25	1 NPT
G5032-SR/GC5032-SR	33.00	14.00	30.25	1-1/2 NPT
G5036-SR/GC5036-SR	37.25	16.00	32.38	1-1/2 NPT

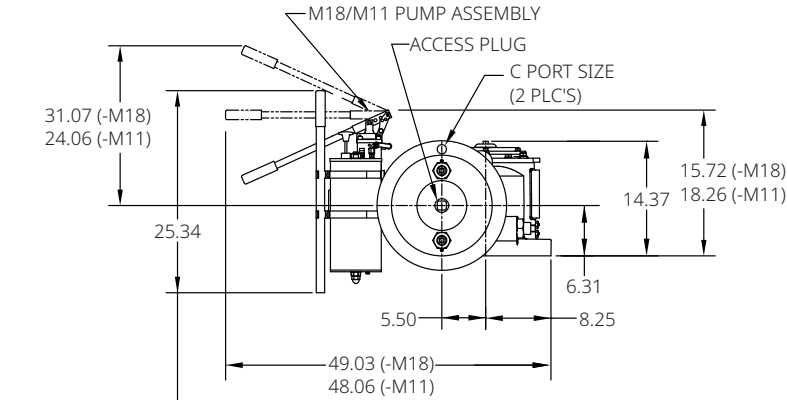
Data sheet

Document No.: VCPDS-13967-US

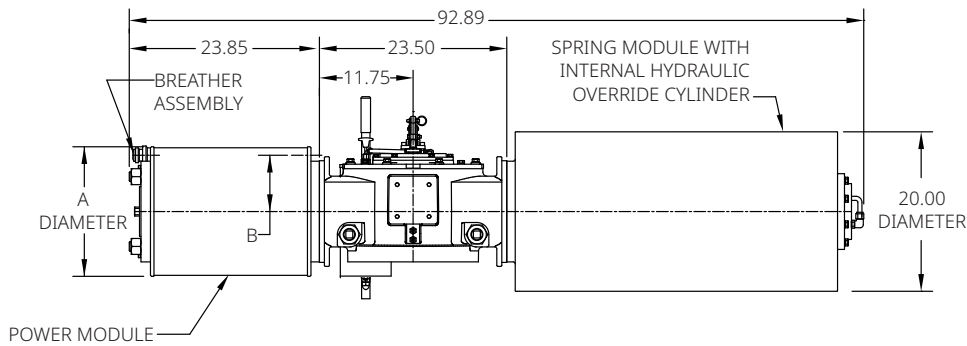
Date: June 2024

G/GC-Series

G50XX-SR-M18/GC50XX-SR-M18 G50XX-SR-M11/GC50XX-SR-M11 (CW Model Shown)



NOTE: PUMP HANDLE SHOWN STORED,
MAY BE MOVED UP OR DOWN



Notes:

Not certified dimensional drawings. Such drawings are available on request.
Contact factory with correct model designation and serial number.
All dimensions are expressed in inches.

Table 25.

Actuator Model	A	B	C
G5016-SR-M18/GC5016-SR-M18	16.25	7.06	3/4 NPT
G5020-SR-M18/GC5020-SR-M18	20.25	8.00	3/4 NPT
G5024-SR-M18/GC5024-SR-M18	24.25	9.25	1 NPT
G5028-SR-M18/GC5028-SR-M18	29.00	12.06	1 NPT
G5032-SR-M18/GC5032-SR-M18	33.00	14.00	1-1/2 NPT
G5036-SR-M18/GC5036-SR-M18	37.25	16.00	1-1/2 NPT

Note:

Dimensions A, B and C remain the same in case -M11 in actuator model.

BETTIS™

EMERSON™

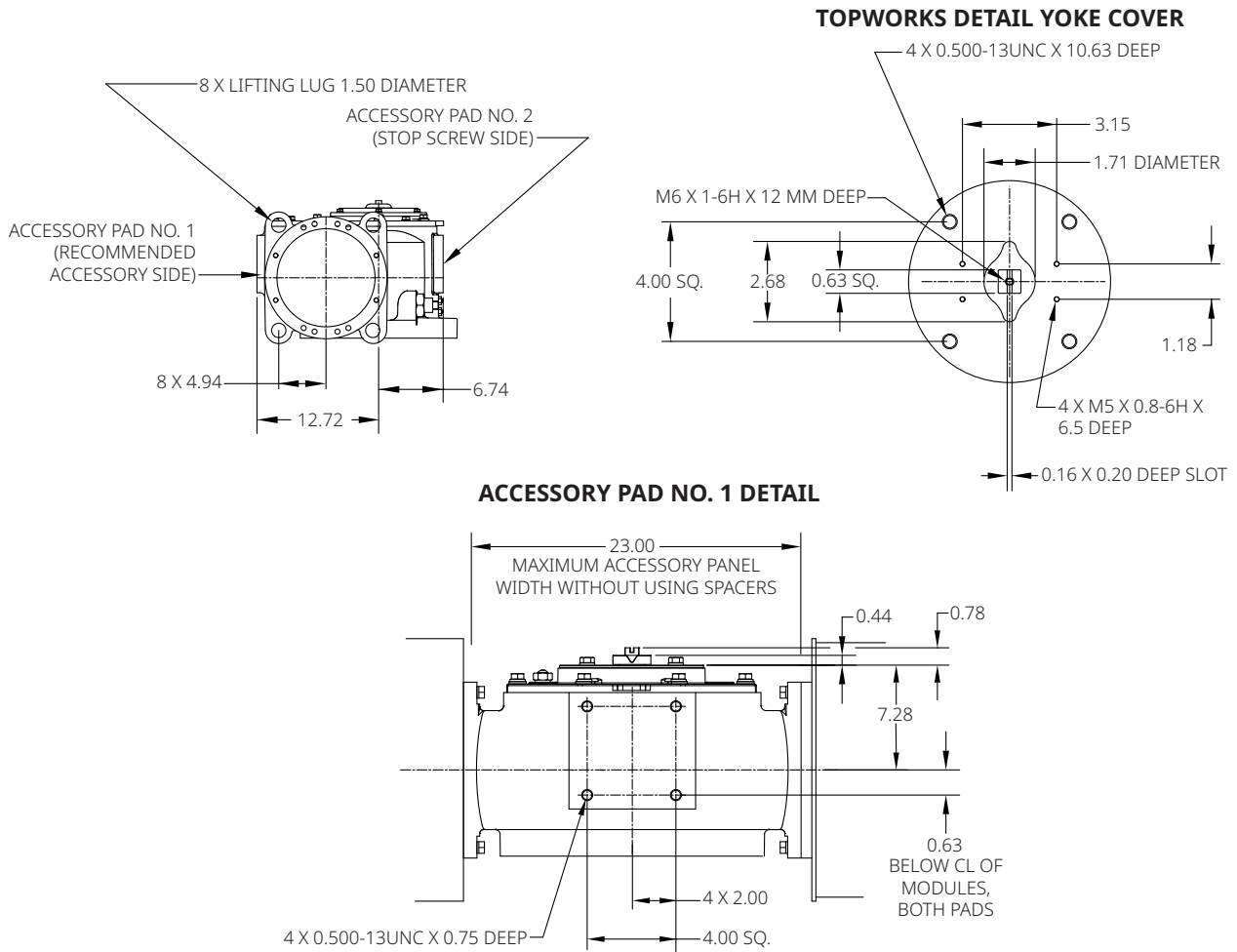
Data sheet

Document No.: VCPDS-13967-US

Date: June 2024

G/GC-Series

Spring-Return Actuators Lug/Accessory Details



Notes:

Not certified dimensional drawings. Such drawings are available on request.
Contact factory with correct model designation and serial number.
All dimensions are expressed in inches.

BETTIS™

© 2024 Emerson. The information in this document is subject to change without notice. Updated data sheets can be obtained from our website www.emerson.com/bettis or from your Emerson representative.



EMERSON™

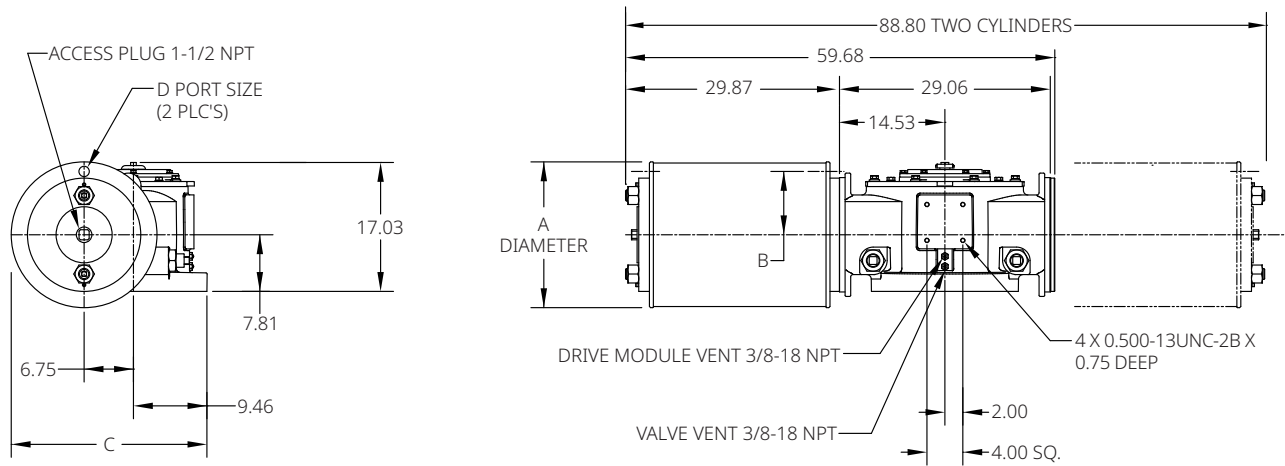
Data sheet

Document No.: VCPDS-13967-US

Date: June 2024

G/GC-Series

Double-Acting Actuators G70XX/GC70XX or G702XX/GC702XX (CW Model Shown)



Notes:

Not certified dimensional drawings. Such drawings are available on request.
Contact factory with correct model designation and serial number.
All dimensions are expressed in inches.

Table 26.

Actuator Model	A	B	C	D
G7020/GC7020	20.25	8.75	26.34	3/4 NPT
G7024/GC7024	24.25	9.63	28.34	1 NPT
G7028/GC7028	29.00	11.25	30.71	1-1/2 NPT
G7032/GC7032	33.00	14.00	32.71	1-1/2 NPT
G7036/GC7036	37.25	16.00	34.84	1-1/2 NPT
G70228/GC70228	29.00	11.25	30.71	1-1/2 NPT

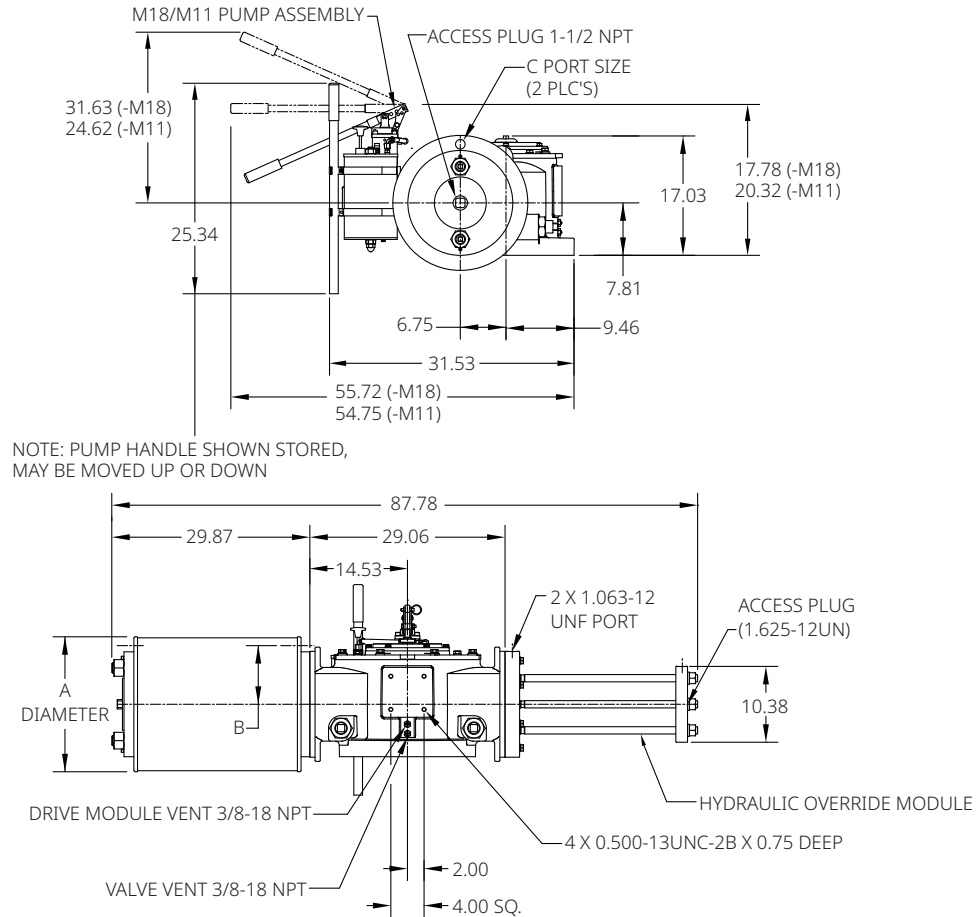
Data sheet

Document No.: VCPDS-13967-US

Date: June 2024

G/GC-Series

G70XX-M18/GC70XX-M18 G70XX-M11/GC70XX-M11 (CW Model Shown)



Notes:

Not certified dimensional drawings. Such drawings are available on request. Contact factory with correct model designation and serial number. All dimensions are expressed in inches.

Table 27.

Actuator Model	A	B	C
G7020-M18/GC7020-M18	20.25	8.75	3/4 NPT
G7024-M18/GC7024-M18	24.25	9.63	1 NPT
G7028-M18/GC7028-M18	29.00	11.25	1-1/2 NPT
G7032-M18/GC7032-M18	33.00	14.00	1-1/2 NPT
G7036-M18/GC7036-M18	37.25	16.00	1-1/2 NPT

Note:

Dimensions A, B and C remain the same in case -M11 in actuator model.

BETTIS™

EMERSON™

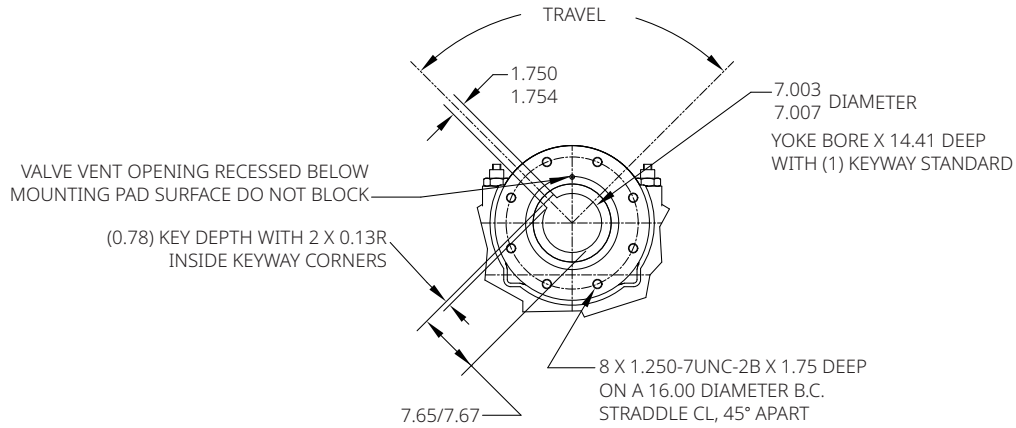
Data sheet

Document No.: VCPDS-13967-US

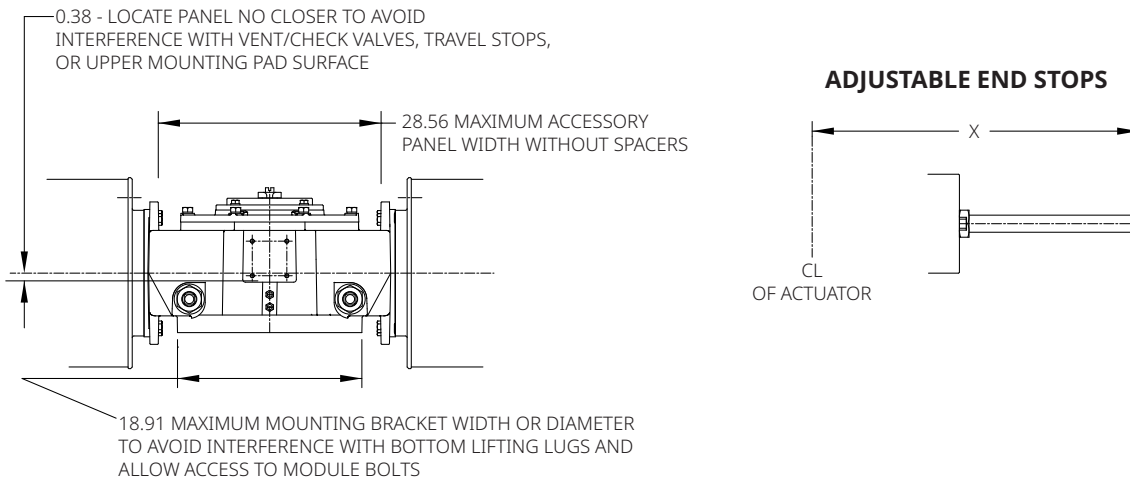
Date: June 2024

G/GC-Series

Double-Acting Actuators Valve/Accessory Mounting Details



ACCESSORY PAD NO. 2 DETAIL



Notes:

Not certified dimensional drawings. Such drawings are available on request.
Contact factory with correct model designation and serial number.
All dimensions are expressed in inches.

Table 28.

	X Extended Travel Stop	X End Stop
Power Module	60.97	46.72
Blind End Cap Module	35.53	21.28
Spring Module	91.10	54.44

BETTIS™


EMERSON™

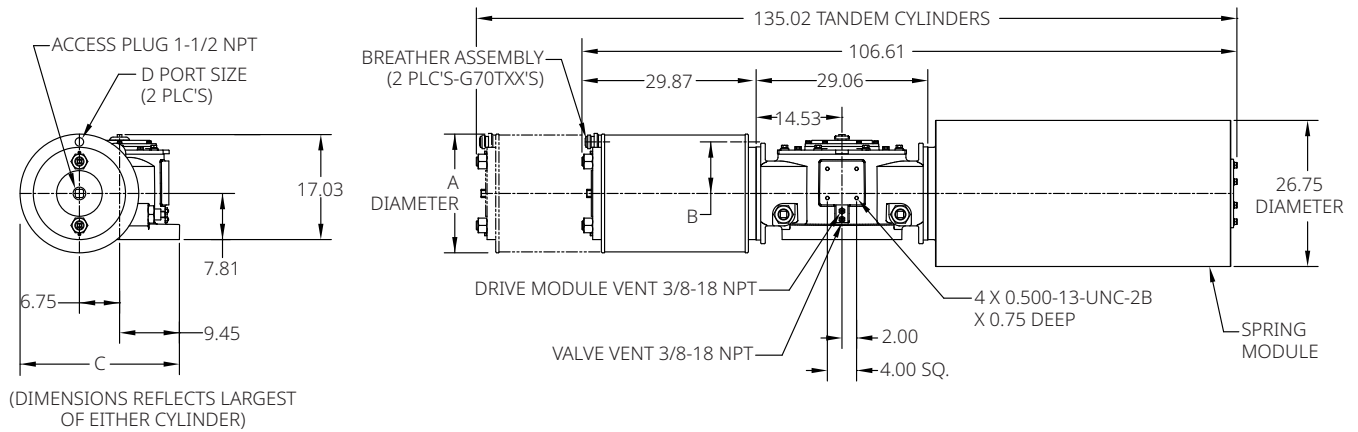
Data sheet

Document No.: VCPDS-13967-US

Date: June 2024

G/GC-Series

Spring-Return Actuators G70XX-SR/GC70XX-SR or G70TXX-SR/GC70TXX-SR (CW Model Shown)



Notes:

Not certified dimensional drawings. Such drawings are available on request. Contact factory with correct model designation and serial number. All dimensions are expressed in inches.

Table 29.

Actuator Model	A	B	C	D
G7020-SR/GC7020-SR	20.25	8.75	29.59	3/4 NPT
G7024-SR/GC7024-SR	24.25	9.63	29.59	1 NPT
G7028-SR/GC7028-SR	29.00	11.25	30.71	1-1/2 NPT
G7032-SR/GC7032-SR	33.00	14.00	32.71	1-1/2 NPT
G7036-SR/GC7036-SR	37.25	16.00	34.84	1-1/2 NPT
G70T28-SR/GC70T28-SR	29.00	11.25	30.71	1-1/2 NPT

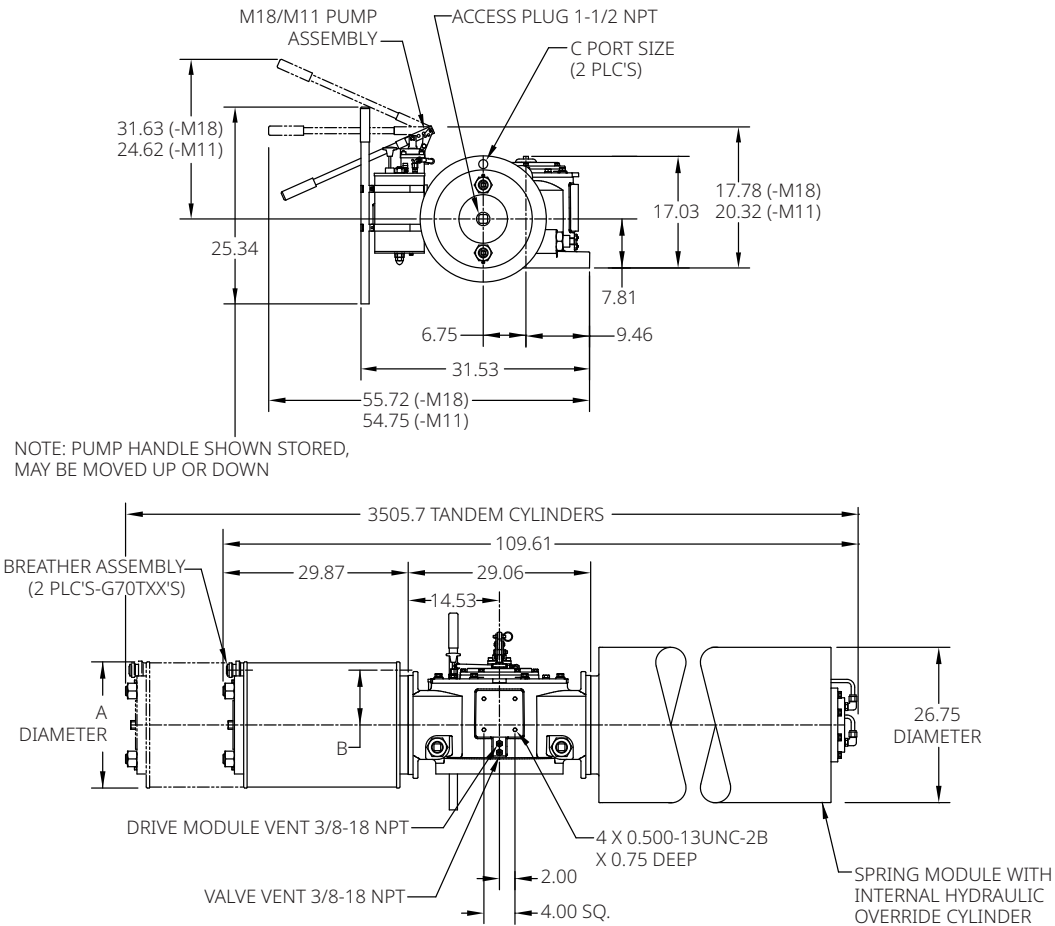
Data sheet

Document No.: VCPDS-13967-US

Date: June 2024

G/GC-Series

G70XX-SR-M18/GC70XX-SR-M18 or G70TXX-SR-M18/GC70TXX-SR-M18 G70XX-SR-M11/GC70XX-SR-M11 or G70TXX-SR-M11/GC70TXX-SR-M11 (CW Model Shown)



Notes:

Not certified dimensional drawings. Such drawings are available on request. Contact factory with correct model designation and serial number. All dimensions are expressed in inches.

Table 30.

Actuator Model	A	B	C
G7020-SR-M18/GC7020-SR-M18	20.25	8.75	3/4 NPT
G7024-SR-M18/GC7024-SR-M18	24.25	9.63	1 NPT
G7028-SR-M18/GC7028-SR-M18	29.00	11.25	1-1/2 NPT
G7032-SR-M18/GC7032-SR-M18	33.00	14.00	1-1/2 NPT
G7036-SR-M18/GC7036-SR-M18	37.25	16.00	1-1/2 NPT
G70T28-SR-M18/GC70T28-SR-M18	29.00	11.25	1-1/2 NPT

Note:

Dimensions A, B and C remain the same in case -M11 in actuator model.

BETTIS[™]

EMERSON[™]

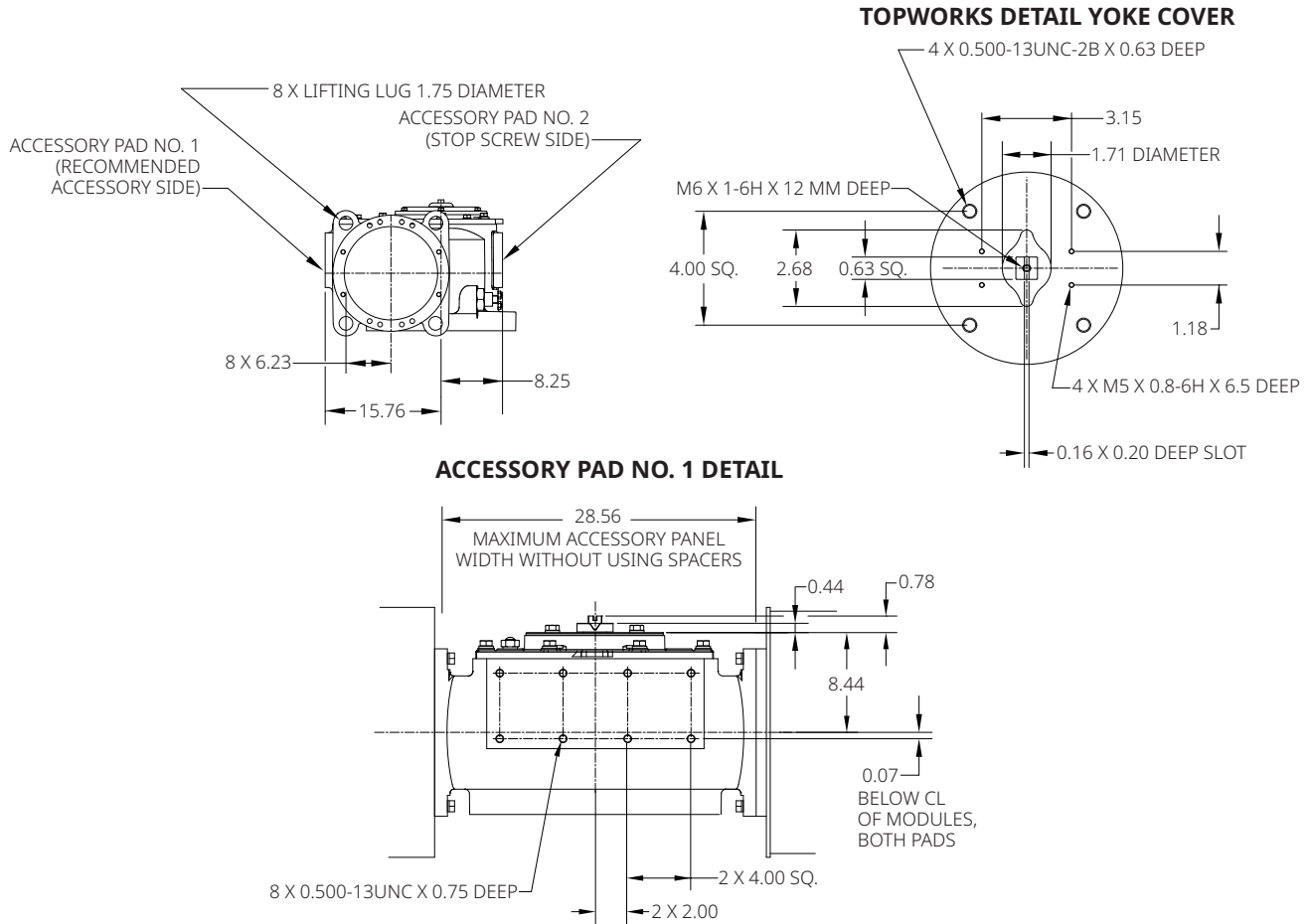
Data sheet

Document No.: VCPDS-13967-US

Date: June 2024

G/GC-Series

Spring-Return Actuators Lug/Accessory Details



Notes:

Not certified dimensional drawings. Such drawings are available on request.
Contact factory with correct model designation and serial number.
All dimensions are expressed in inches.

BETTIS™



EMERSON™

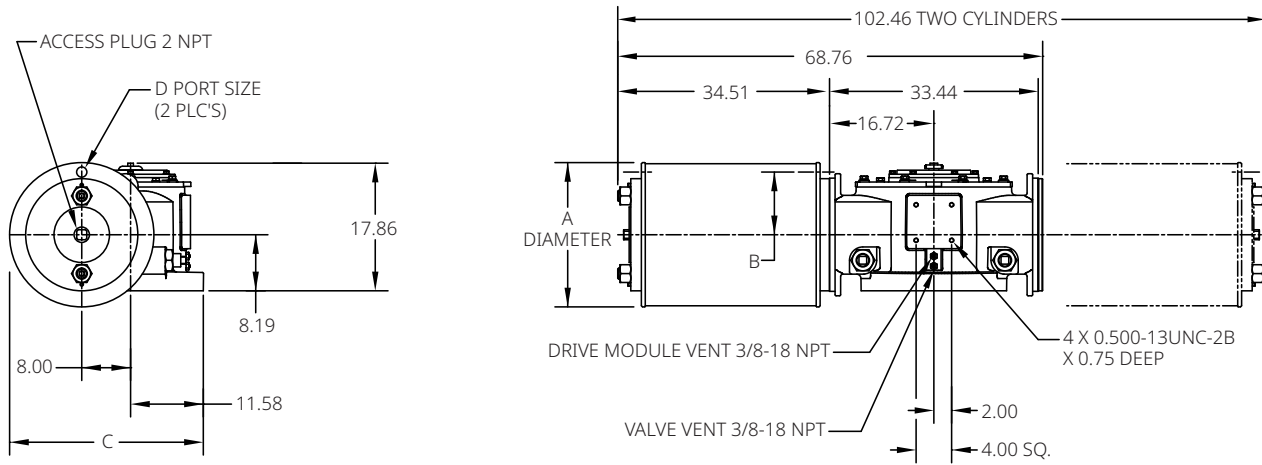
Data sheet

Document No.: VCPDS-13967-US

Date: June 2024

G/GC-Series

Double-Acting Actuators G80XX/GC80XX or G802XX/GC802XX (CW Model Shown)



Notes:

Not certified dimensional drawings. Such drawings are available on request.
Contact factory with correct model designation and serial number.
All dimensions are expressed in inches.

Table 31.

Actuator Model	A	B	C	D
G8024/GC8024	24.25	9.63	31.71	1 NPT
G8028/GC8028	29.00	12.38	34.08	1-1/2 NPT
G8032/GC8032	33.00	13.38	36.08	1-1/2 NPT
G8036/GC8036	37.25	16.00	38.21	1-1/2 NPT
G8040/GC8040	41.25	18.00	40.21	2 NPT
G80232/GC80232	33.00	13.38	36.08	1-1/2 NPT
G80236/GC80236	37.25	16.00	38.21	1-1/2 NPT

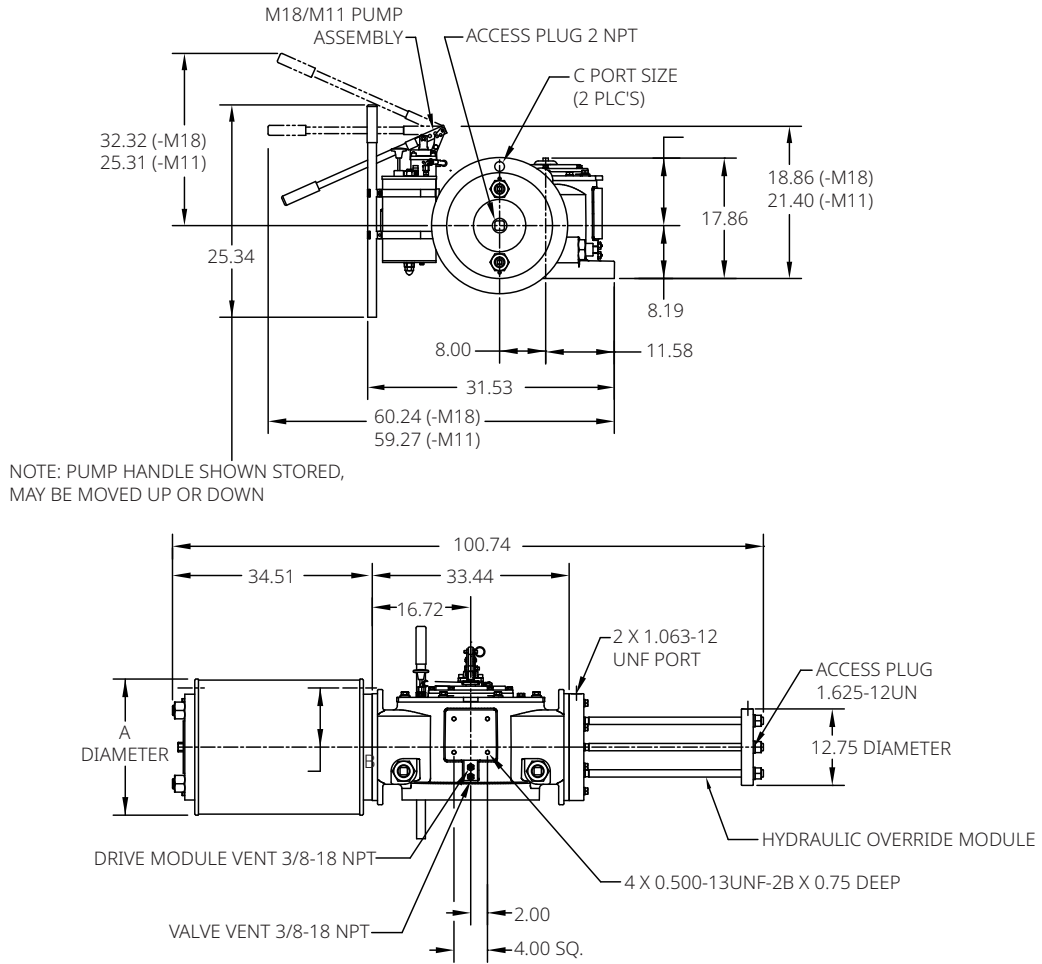
Data sheet

Document No.: VCPDS-13967-US

Date: June 2024

G/GC-Series

G80XX-M18/GC80XX-M18 G80XX-M11/GC80XX-M11 (CW Model Shown)



Notes:

Not certified dimensional drawings. Such drawings are available on request.
Contact factory with correct model designation and serial number.
All dimensions are expressed in inches.

Table 32.

Actuator Model	A	B	C
G8024-M18/GC8024-M18	24.25	9.63	1 NPT
G8028-M18/GC8028-M18	29.00	12.38	1-1/2 NPT
G8032-M18/GC8032-M18	33.00	13.38	1-1/2 NPT
G8036-M18/GC8036-M18	37.25	16.00	1-1/2 NPT
G8040-M18/GC8040-M18	41.25	18.00	2 NPT

Note:

Dimensions A, B and C remain the same in case -M11 in actuator model.

BETTIS™

EMERSON™

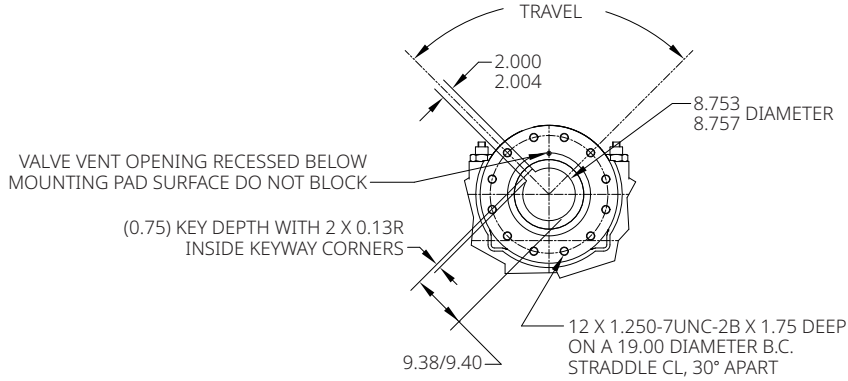
Data sheet

Document No.: VCPDS-13967-US

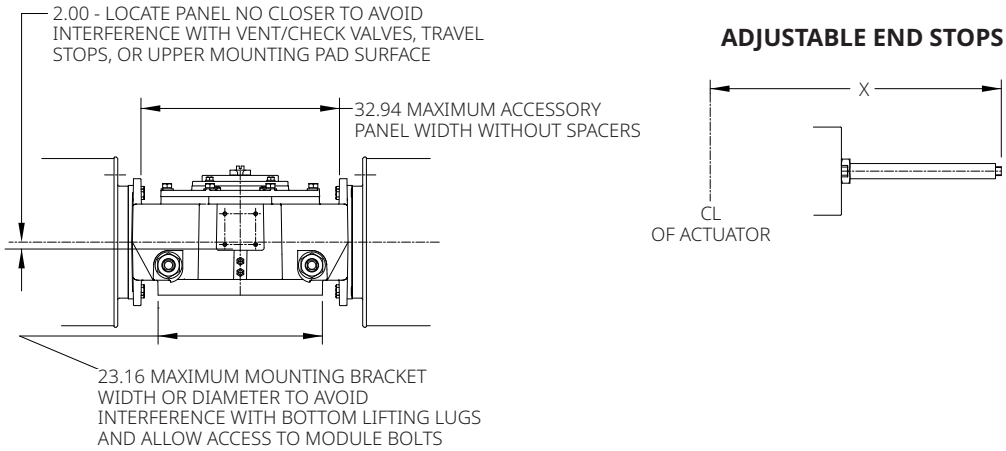
Date: June 2024

G/GC-Series

Double-Acting Actuators Valve/Accessory Mounting Details



ACCESSORY PAD NO. 2 DETAIL



Notes:

Not certified dimensional drawings. Such drawings are available on request. Contact factory with correct model designation and serial number. All dimensions are expressed in inches.

Table 33.

	X Extended Travel Stop	X End Stop
Power Module	70.94	54.39
Blind End Cap Module	40.66	24.92
Spring Module	112.04	71.00

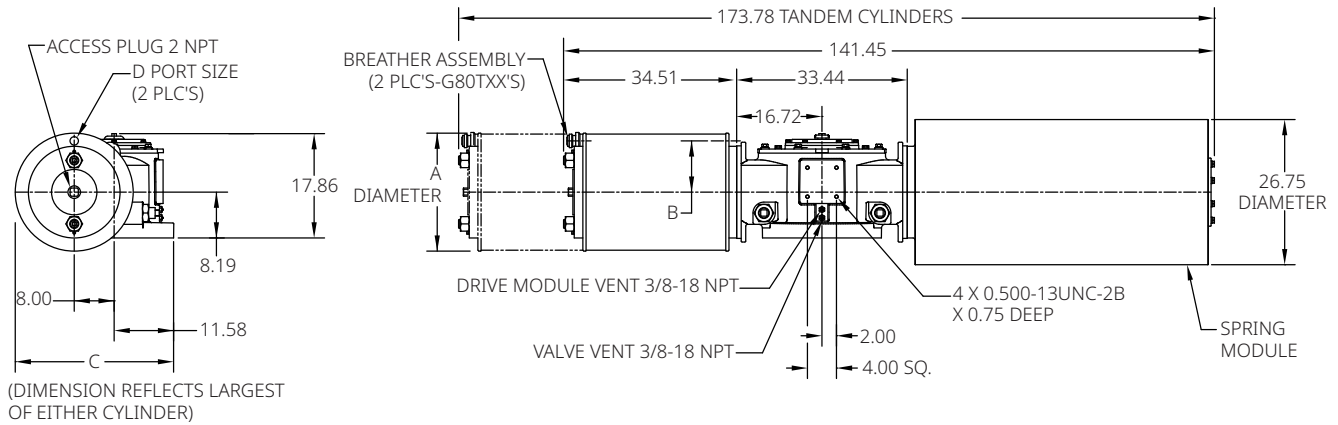
Data sheet

Document No.: VCPDS-13967-US

Date: June 2024

G/GC-Series

Spring-Return Actuators G80XX-SR/GC80XX-SR or G80TXX-SR/GC80TXX-SR (CW Model Shown)



Notes:

Not certified dimensional drawings. Such drawings are available on request. Contact factory with correct model designation and serial number. All dimensions are expressed in inches.

Table 34.

Actuator Model	A	B	C	D
G8024-SR/GC8024-SR	24.25	9.63	32.96	1 NPT
G8028-SR/GC8028-SR	29.00	12.38	34.08	1-1/2 NPT
G8032-SR/GC8032-SR	33.00	13.38	36.08	1-1/2 NPT
G8036-SR/GC8036-SR	37.25	16.00	38.21	1-1/2 NPT
G8040-SR/GC8040-SR	41.25	18.00	40.21	2 NPT
G80T32-SR/GC80T32-SR	33.00	13.38	36.08	1-1/2 NPT
G80T36-SR/GC80T36-SR	37.25	16.00	38.21	1-1/2 NPT

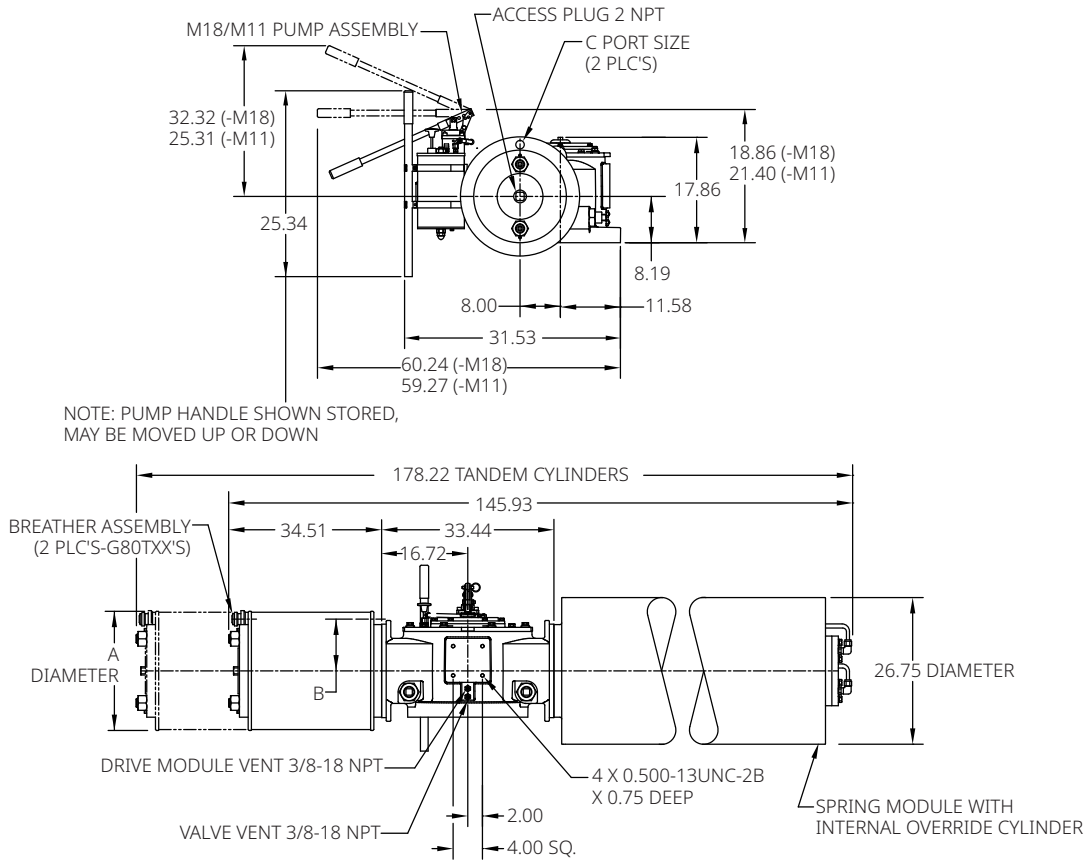
Data sheet

Document No.: VCPDS-13967-US

Date: June 2024

G/GC-Series

**G80XX-SR-M18/GC80XX-SR-M18 or G80TXX-SR-M18/GC80TXX-SR-M18
G80XX-SR-M11/GC80XX-SR-M11 or G80TXX-SR-M11/GC80TXX-SR-M11 (CW Model Shown)**



Notes:
Not certified dimensional drawings. Such drawings are available on request.
Contact factory with correct model designation and serial number.
All dimensions are expressed in inches.

Table 35.

Actuator Model	A	B	C
G8024-SR-M18/GC8024-SR-M18	24.25	9.63	1 NPT
G8028-SR-M18/ GC8028-SR-M18	29.00	12.38	1-1/2 NPT
G8032-SR-M18/GC8032-SR-M18	33.00	13.38	1-1/2 NPT
G8036-SR-M18/GC8036-SR-M18	37.25	16.00	1-1/2 NPT
G8040-SR-M18/GC8040-SR-M18	41.25	18.00	2 NPT
G80T32-SR-M18/GC80T32-SR-M18	33.00	13.38	1-1/2 NPT
G80T36-SR-M18/GC80T36-SR-M18	37.25	16.00	1-1/2 NPT

Note:
Dimensions A, B and C remain the same in case -M11 in actuator model.



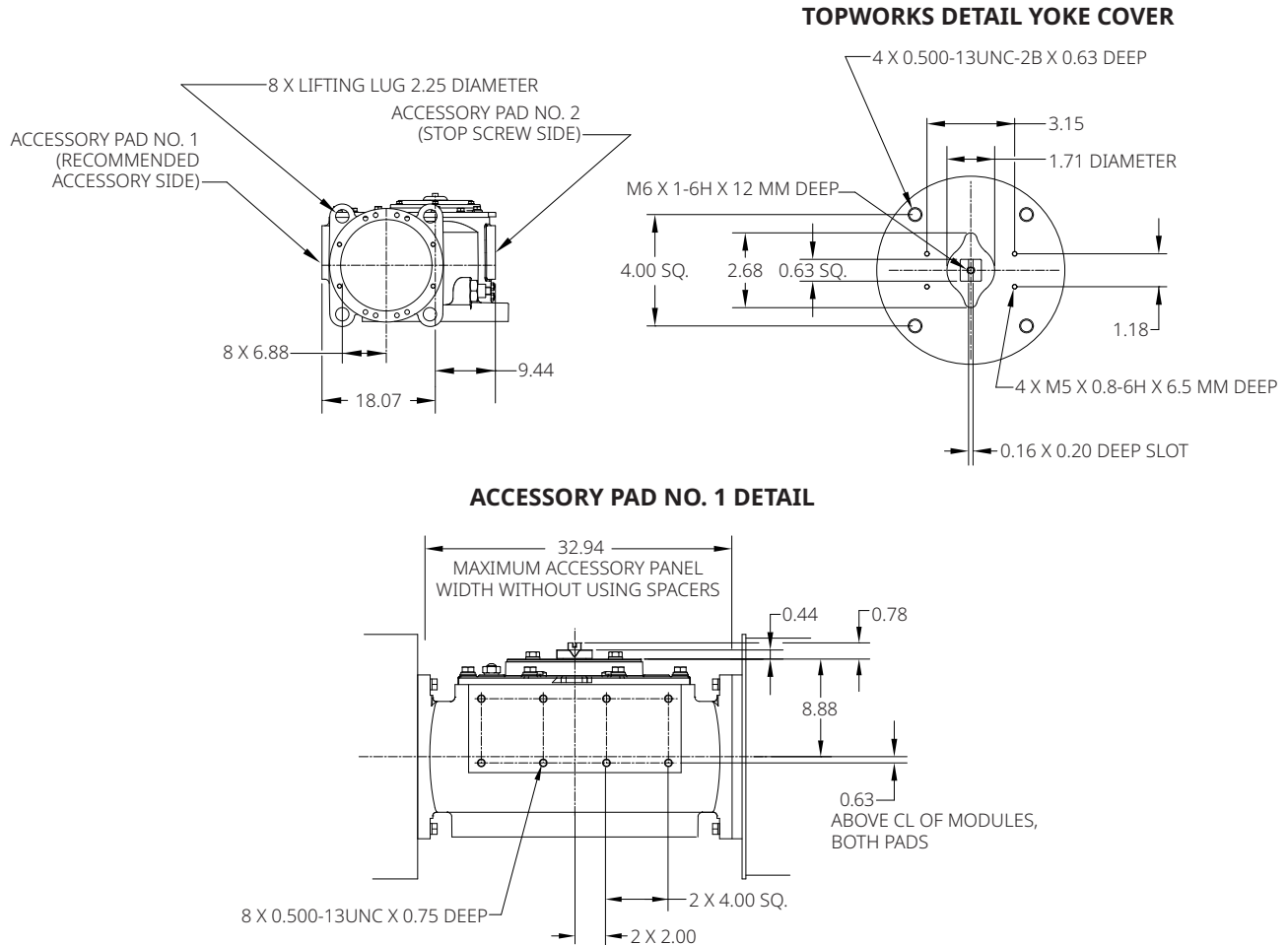
Data sheet

Document No.: VCPDS-13967-US

Date: June 2024

G/GC-Series

Spring-Return Actuators Lug/Accessory Details



Notes:

Not certified dimensional drawings. Such drawings are available on request.
Contact factory with correct model designation and serial number.
All dimensions are expressed in inches.

BETTIS™

© 2024 Emerson. The information in this document is subject to change without notice. Updated data sheets can be obtained from our website www.emerson.com/bettis or from your Emerson representative.



EMERSON™

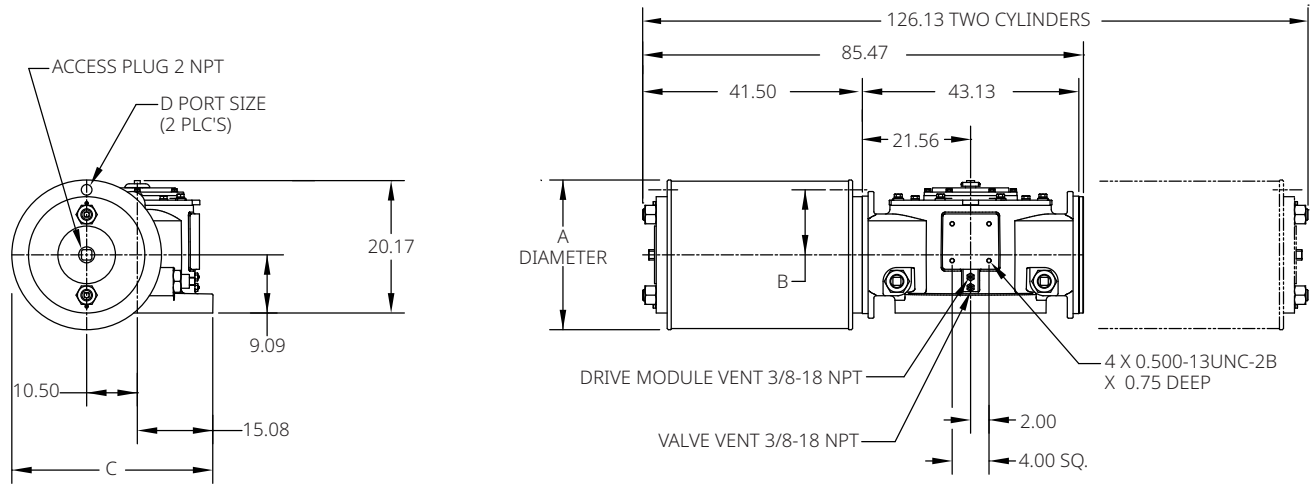
Data sheet

Document No.: VCPDS-13967-US

Date: June 2024

G/GC-Series

Double-Acting Actuators G100XX/GC100XX or G1002XX/GC1002XX (CW Model Shown)



Notes:

Not certified dimensional drawings. Such drawings are available on request.
Contact factory with correct model designation and serial number.
All dimensions are expressed in inches.

Table 36.

Actuator Model	A	B	C	D
G10028/GC10028	29.00	12.38	40.08	1-1/2 NPT
G10032/GC10032	33.00	13.38	42.08	1-1/2 NPT
G10036/GC10036	37.25	16.00	44.21	2 NPT
G10040/GC10040	41.25	18.00	46.21	2 NPT
G100232/GC100232	33.00	13.38	42.08	1-1/2 NPT
G100236/GC100236	37.25	16.00	44.21	2 NPT
G100240/GC100240	41.25	18.00	46.21	2 NPT

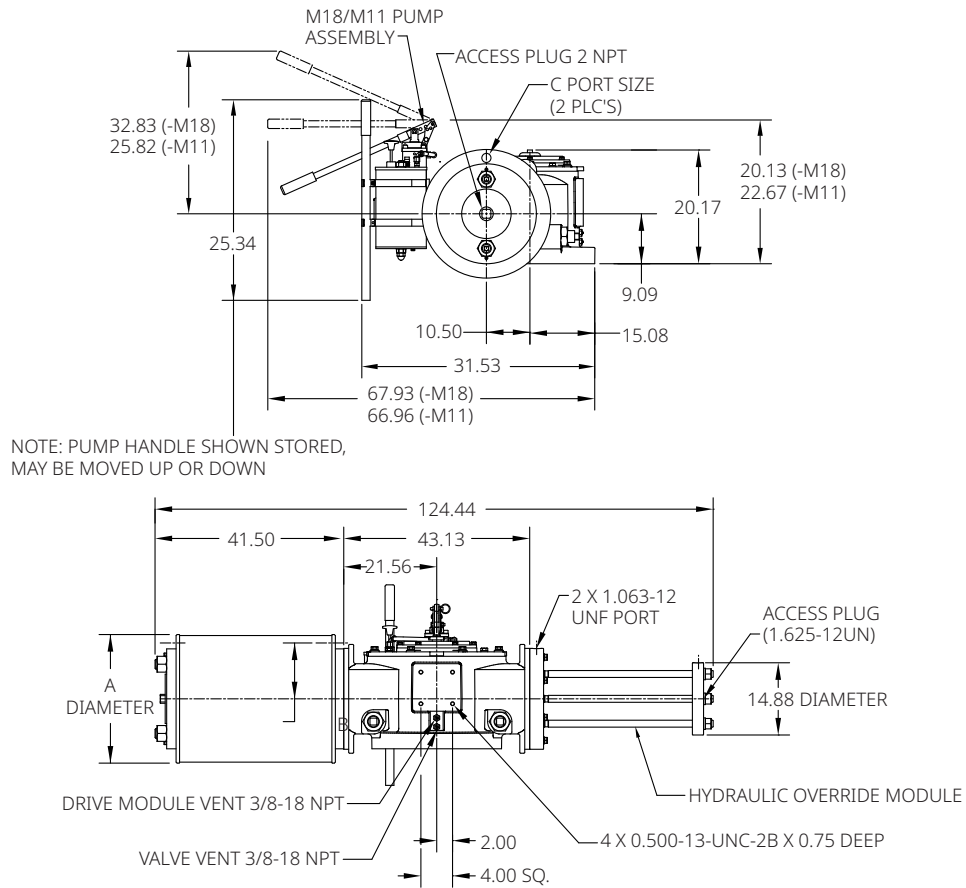
Data sheet

Document No.: VCPDS-13967-US

Date: June 2024

G/GC-Series

G100XX-M18/GC100XX-M18 G100XX-M11/GC100XX-M11 (CW Model Shown)



Notes:
 Not certified dimensional drawings. Such drawings are available on request.
 Contact factory with correct model designation and serial number.
 All dimensions are expressed in inches.

Table 37.

Actuator Model	A	B	C
G10028-M18/GC10028-M18	29.00	12.38	1-1/2 NPT
G10032-M18/GC10032-M18	33.00	13.38	1-1/2 NPT
G10036-M18/GC10036-M18	37.25	16.00	2 NPT
G10040-M18/GC10040-M18	41.25	18.00	2 NPT

Note:
 Dimensions A, B and C remain the same in case -M11 in actuator model.

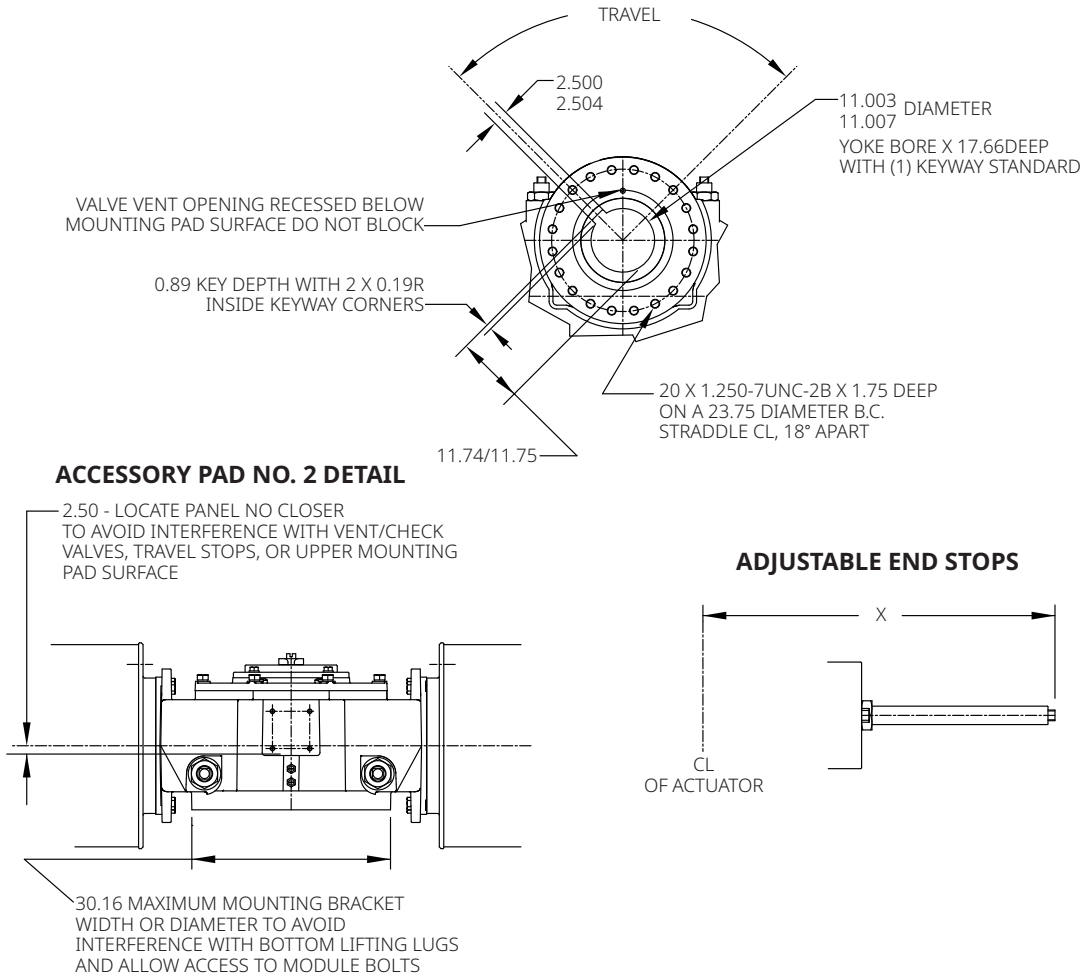
Data sheet

Document No.: VCPDS-13967-US

Date: June 2024

G/GC-Series

Double-Acting Actuators Valve/Accessory Mounting Details



Notes:

Not certified dimensional drawings. Such drawings are available on request.
Contact factory with correct model designation and serial number.
All dimensions are expressed in inches.

Table 38.

	X Extended Travel Stop	X End Stop
Power Module	89.08	80.08
Blind End Cap Module	Consult Factory	Consult Factory
Spring Module	Consult Factory	Consult Factory

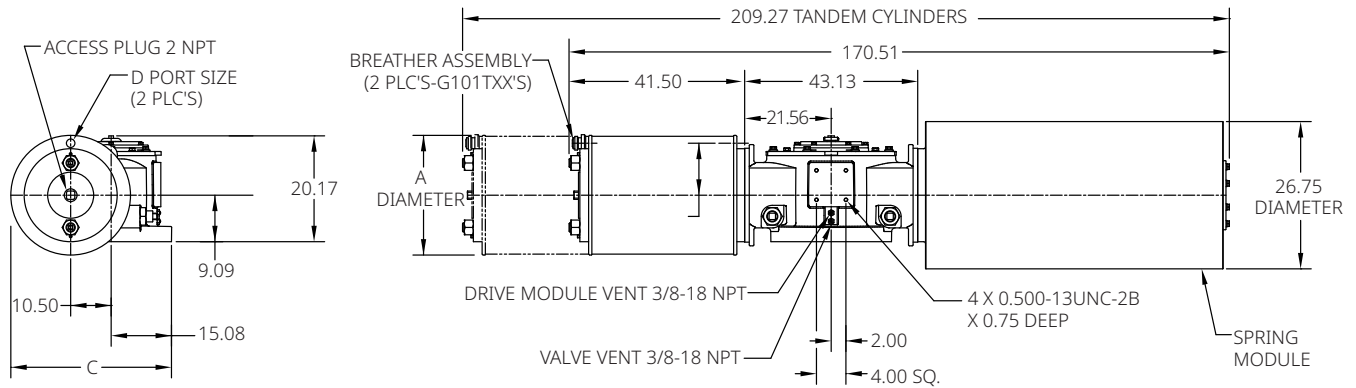
Data sheet

Document No.: VCPDS-13967-US

Date: June 2024

G/GC-Series

Spring-Return Actuators G100XX-SR/GC100XX-SR or G100TXX-SR/GC100TXX-SR (CW Model Shown)



Notes:

Not certified dimensional drawings. Such drawings are available on request.
Contact factory with correct model designation and serial number.
All dimensions are expressed in inches.

Table 39.

Actuator Model	A	B	C	D
G10028-SR/GC10028-SR	29.00	12.38	40.08	1-1/2 NPT
G10032-SR/GC10032-SR	33.00	13.38	42.08	1-1/2 NPT
G10036-SR/GC10036-SR	37.25	16.00	44.21	2 NPT
G10040-SR/GC10040-SR	41.25	18.00	46.21	2 NPT
G100T32-SR/GC100T32-SR	33.00	13.38	42.08	1-1/2 NPT
G100T36-SR/GC100T36-SR	37.25	16.00	44.21	2 NPT
G100T40-SR/GC100T40-SR	41.25	18.00	46.21	2 NPT

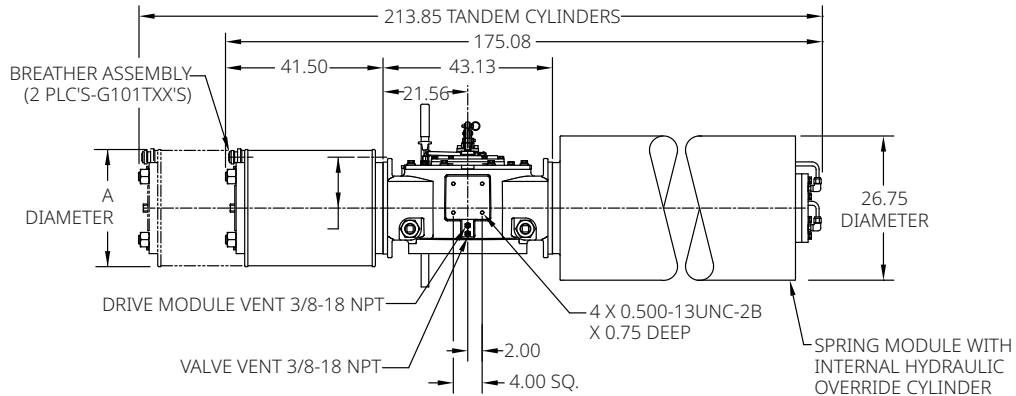
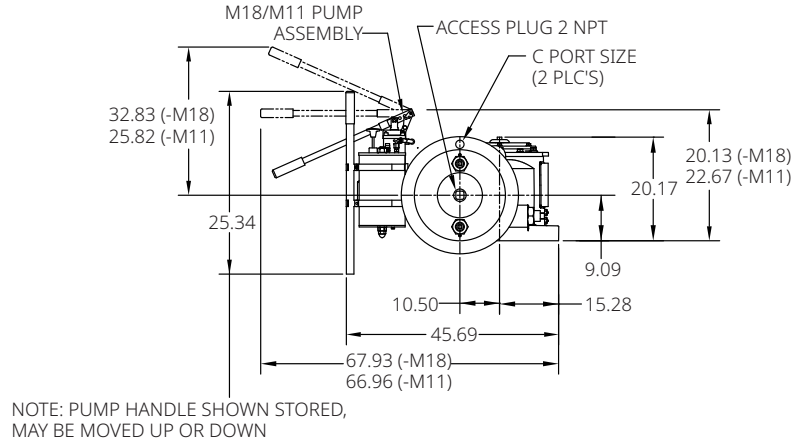
Data sheet

Document No.: VCPDS-13967-US

Date: June 2024

G/GC-Series

G100XX-SR-M18/GC100XX-SR-M18 or G100TXX-SR-M18/GC100TXX-SR-M18 G100XX-SR-M11/GC100XX-SR-M11 or G100TXX-SR-M11/GC100TXX-SR-M11 (CW Model Shown)



Notes:
Not certified dimensional drawings. Such drawings are available on request.
Contact factory with correct model designation and serial number.
All dimensions are expressed in inches.

Table 40.

Actuator Model	A	B	C
G10028-SR-M18/GC10028-SR-M18	29.00	12.38	1-1/2 NPT
G10032-SR-M18/GC10032-SR-M18	33.00	13.38	1-1/2 NPT
G10036-SR-M18/GC10036-SR-M18	37.25	16.00	2 NPT
G10040-SR-M18/GC10040-SR-M18	41.25	18.00	2 NPT
G100T32-SR-M18/GC100T32-SR-M18	33.00	13.38	1-1/2 NPT
G100T36-SR-M18/GC100T36-SR-M18	37.25	16.00	2 NPT
G100T40-SR-M18/GC100T40-SR-M18	41.25	18.00	2 NPT

Note:
Dimensions A, B and C remain the same in case -M11 in actuator model.



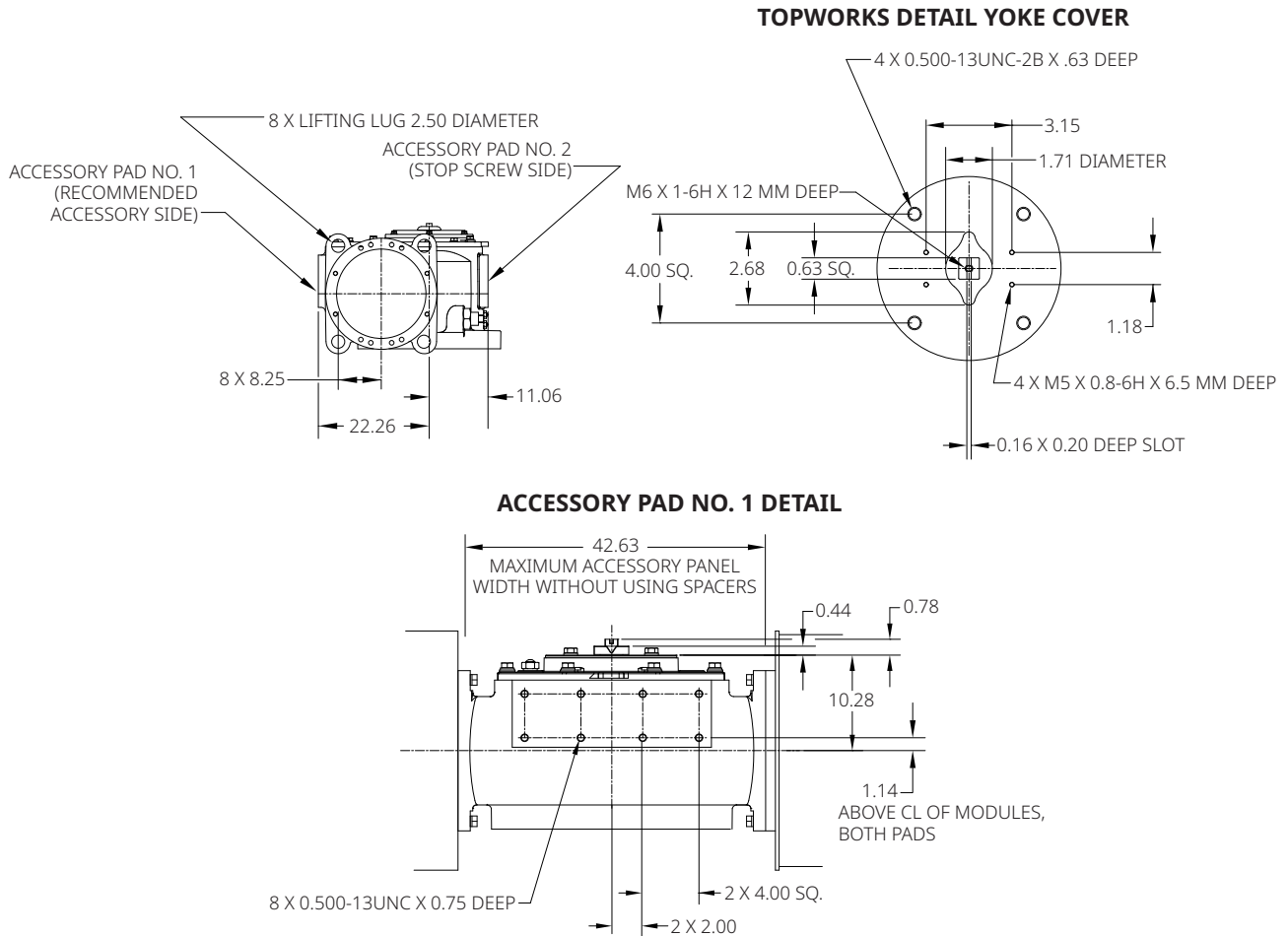
Data sheet

Document No.: VCPDS-13967-US

Date: June 2024

G/GC-Series

Spring-Return Actuators Lug/Accessory Details



Notes:

Not certified dimensional drawings. Such drawings are available on request.
Contact factory with correct model designation and serial number.
All dimensions are expressed in inches.

www.emerson.com/bettis

VCPDS-13967-US © 2024 (PC - 17262-US) Emerson. All rights reserved.

The Emerson logo is a trademark and service mark of Emerson Electric Co. Bettis™ is a mark of one of the Emerson family of companies. All other marks are property of their respective owners.

The contents of this publication are presented for informational purposes only, and while every effort has been made to ensure their accuracy, they are not to be construed as warranties or guarantees, express or implied, regarding the products or services described herein or their use or applicability. All sales are governed by our terms and conditions, which are available upon request. We reserve the right to modify or improve the designs or specifications of such products at any time without notice.

BETTIS™

