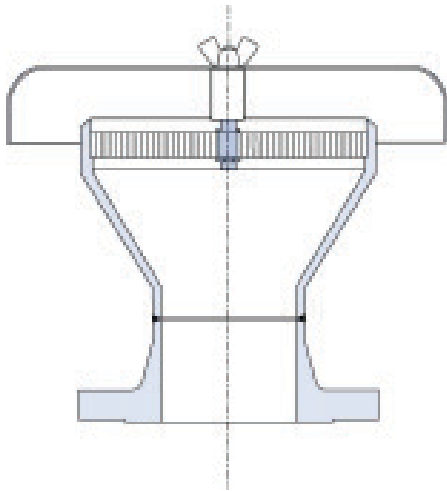




## ANDERSON GREENWOOD AMAL LER/LERC/LEF/LEFC FLAME ARRESTERS

Lightweight end-of-line deflagration flame arresters designed to prevent the propagation of a flame with subsonic speed.



### FEATURES

- Weather cowled or non-cowled model variants available.
- Fabricated design.
- Lightweight construction.
- Advanced crimped stainless steel element construction as standard. Other materials available.
- Independently tested and certified.
- Manufactured to ISO 9001:2015

### GENERAL APPLICATION

The Types LER and LEF are mounted on tanks or on the end of discharge pipes to stop flames entering the process. The Type LEF's 1:1 inlet to element ratio design makes it ideal for low cost, low pressure drop applications.

### TECHNICAL DATA

Materials:	Carbon steel, stainless steel
Sizes:	DN 6 to 400 (1/8" to 16")
Connections:	Threaded or flanged
Temperature range:	-20 to 60°C (-4 to 140°F) <sup>1)</sup>
Gas groups:	IIA, IIB1, IIB2, IIB3, IIB, IIC
Certification:	ATEX Directive 2014/34/EU

1. Temperatures up to 200°C (392°F) available for certain gas groups.

# ANDERSON GREENWOOD AMAL LER/LERC/LEF/LEFC FLAME ARRESTERS

## MATERIALS AND CONNECTION OPTIONS

### Materials

Carbon steel and stainless steel.

### Connection pipe size

#### Threaded

LER/LERC: DN 6 to 50 (1/8" to 2")

#### Flanged

LER/LERC: DN 15 to 400 (1/2" to 16")

LEF/LEFC: DN 40 to 400 (1 1/2" to 16")

### NOTE

Accessories, special materials and connections are available on request.

### Gas groups

- IIA
- IIB1
- IIB2
- IIB3
- IIB
- IIC

## HIGH TEMPERATURE (+200°C (+392°F)) APPLICATIONS

Explosion group	Gap width	Inlet size
IIB1 (IIA)	0.8 mm (0.032")	DN 15 to 600 (1/2" to 24")
IIB	0.45 mm (0.018")	DN 15 to 600 (1/2" to 24")
IIB2, IIB3	0.6 mm (0.024")	DN 15 (1/2") only
IIC	0.3 mm (0.012")	DN 15 (1/2") only

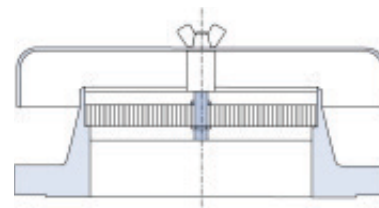
### NOTES

All sizing and selection must be conducted by the factory.

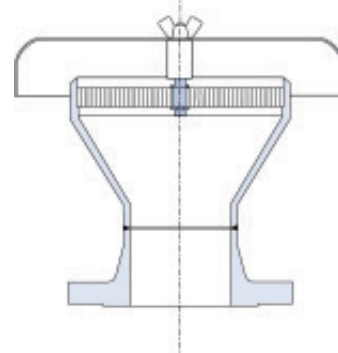
Standard Types LER/LERC elements are double the pipe size.

Types LEF/LEFC elements are 1:1.

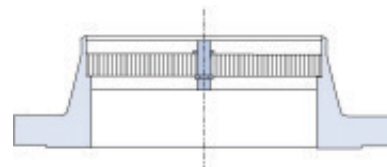
TYPE LEFC (LC VERSION)



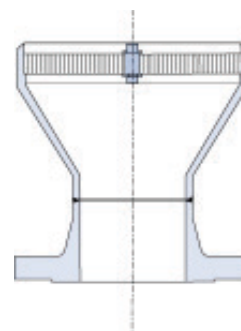
TYPE LERC (LC VERSION)



TYPE LEF (LE VERSION)



TYPE LER (LE VERSION)



# ANDERSON GREENWOOD AMAL LER/LERC/LEF/LEFC FLAME ARRESTERS

## SELECTION GUIDE

Example:	LER	50	LE	100	19	80	S3	S3
<b>Model</b>								
<b>LER</b>								
<b>LERC</b>								
<b>Connection diameter</b>								
<b>Threaded</b>								
DN 6 to 50 (1/8" to 2")								
<b>Flanged</b>								
DN 15 to 400 (1/2" to 16")								
<b>Element code</b>								
<b>LE</b>								
<b>LC</b>								
<b>Element diameter</b>								
DN 25 to 100 (1" to 4") - threaded connection								
DN 25 to 600 (1" to 24") - flanged connection								
<b>Element width</b>								
<b>19</b> 19 mm (0.75")								
<b>Cell height</b>								
<b>80</b> 0.80 mm (0.032")								
<b>60</b> 0.60 mm (0.024")								
<b>45</b> 0.45 mm (0.018")								
<b>15</b> 0.15 mm (0.006")								
<b>Element material</b>								
<b>S3</b> Stainless steel								
<b>C</b> Carbon steel								
<b>Body material</b>								
<b>S3</b> Stainless steel								
<b>C</b> Carbon steel								

## SELECTION GUIDE

Example:	LEF	50	LE	100	19	80	S3	S3
<b>Model</b>								
<b>LEF</b>								
<b>LEFC</b>								
<b>Connection diameter</b>								
DN 40 to 400 (1 1/2" to 16")								
<b>Element code</b>								
<b>LE</b>								
<b>LC</b>								
<b>Element diameter</b>								
DN 40 to 400 (1 1/2" to 16")								
<b>Element width</b>								
<b>19</b> 19 mm (0.75")								
<b>Cell height</b>								
<b>80</b> 0.80 mm (0.032")								
<b>60</b> 0.60 mm (0.024")								
<b>45</b> 0.45 mm (0.018")								
<b>15</b> 0.15 mm (0.006")								
<b>Element material</b>								
<b>S3</b> Stainless steel								
<b>C</b> Carbon steel								
<b>Body material</b>								
<b>S3</b> Stainless steel								
<b>C</b> Carbon steel								

VCTDS-03787-EN © 2017, 2023 Emerson Electric Co. All rights reserved 09/23. Anderson Greenwood is a mark owned by one of the companies in the Emerson Automation Solutions business unit of Emerson Electric Co. The Emerson logo is a trademark and service mark of Emerson Electric Co. All other marks are property of their respective owners.

The contents of this publication are presented for informational purposes only, and while effort has been made to ensure their accuracy, they are not to be construed as warranties or guarantees, express or implied, regarding the products or services described herein or their use or applicability. All sales are governed by our terms and conditions, which are available on request. We reserve the right to modify or improve the designs or specifications of our products at any time without notice.

Emerson Electric Co. does not assume responsibility for the selection, use or maintenance of any product. Responsibility for proper selection, use and maintenance of any Emerson Electric Co. product remains solely with the purchaser.

Emerson.com