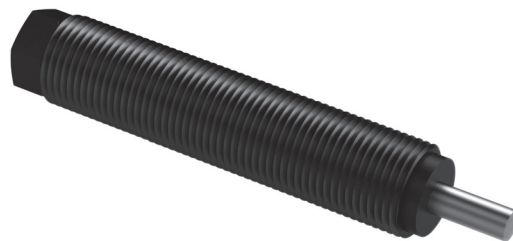
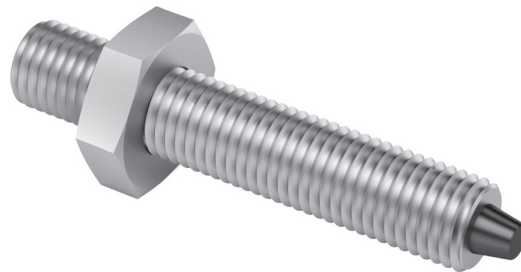


# Shock absorbers



## Table of contents: Shock absorbers

<b>Shock absorbers</b>	<b>Page</b>
Elastomer shock absorber ASED	57
Accessories ASED	57
Stop screw/shock absorber ASSD	58
Shock absorbers SD	59
Accessories SD	61

	ASED M4x0.5-1	ASED M5x0.5-1	ASED M6x0.5-1	ASSD M5x0.5 -3	ASSD M6x0.5 -5	SD M6x0.5-2	SD M6x0.5-3	SD M8x1-2	SD M8x1-3	SD M8x1-4	SD M8x1-5	SD M10x1-4	SD M10x1-5	SD M12x1-1	SD M14x1-1	SD M14x1-2	SD M20x1.5-1	SD M25x1.5-1	SD M14x1 -3
	50389768	50282683	50298509	50599453	50599454	50310020	50287720	11004990	50041089	50177008	50288020	50279077	50337721	50287972	11004987	11004988	50252844	50252854	50001055
CS 6	■																		
CS 8		■		■															
CS 12			■		■														
CS 16										x									
CS 20													x						
CS 25																	■		
LM 12								■											
LM 16								■											
LM 20															■				
LM 25															■				
LM 32															■				
HM 10							x												
HM 16											x								
HM 25														x					
PMP															■				
PMP-c															■				
CR 12						x													
CR 16													x						
CR 20												x							
CR 25																	x		
CR 32																		x	
RM 12								■											
RM 16									■										
RM 25															■				
RM 32																			■
GMQ 12								■											
GMQ 20								■											
GMQ 32																			

**x** This shock absorber (SD) may only be operated with Afag stop sleeves.

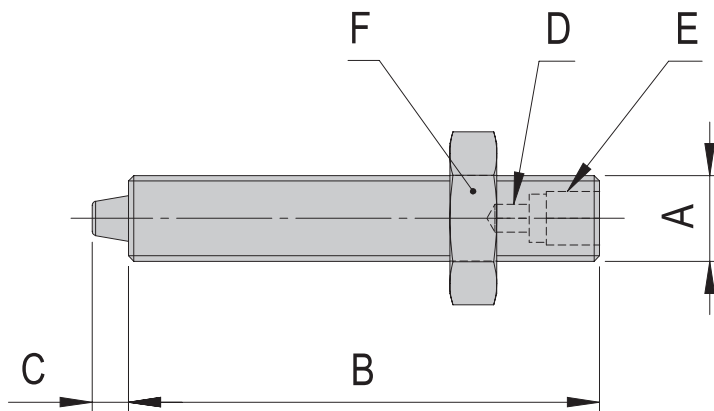
ASED: Stop screw with elastic shock absorber

ASSD: Stop screw with shock absorber

SD: Shock absorber

# Elastomer damper ASED

Elastomer shock absorber ASED	M4x0.5 -1	M5x05 -1	M6x0.5 -1
<b>Order number</b>	<b>50389768</b>	<b>50282683</b>	<b>50298509</b>
Net weight	0.002 kg	0.003 kg	0.006 kg
Repeat accuracy	+/- 0.01 mm	+/- 0.01 mm	+/- 0.01 mm
Max. energy input/stroke	0.005 Nm	0.02 Nm	0.03 Nm
Max. energy input/s	8 Nm	32.4 Nm	48 Nm
Suitable for	CS 6/...-ED	CS 8/...-ED	CS 12/...-ED
A	M4 x 0.5	M5 x 0.5	M6 x 0.5
B	22 mm	26 mm	30 mm
C	1.7 mm	2.8 mm	3.1 mm
D	SW 1.3 mm	SW 1.5 mm	SW 2 mm
E	SW 2.5 mm	SW 3 mm	SW 4 mm



### Accessories

- Absorbing element for ASED M4x0.5 -1 [S. 56]
- Absorbing element for ASED M5/M6x0.5 -1 [S. 56]

## Accessories ASED

Absorbing element for ASED M4x0.5 -1	
<b>Order number</b>	<b>50400874</b>
Net weight	0.001 kg
Suitable for	ASED M4x0.5-1

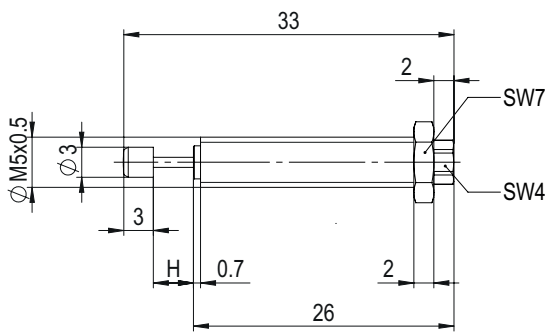
Absorbing element for ASED M5xM6x0.5 -1	
<b>Order number</b>	<b>50286941</b>
Net weight	0.001 kg
Suitable for	ASED M5/M6x0.5-1



# Stop screw/Shock absorber ASSD

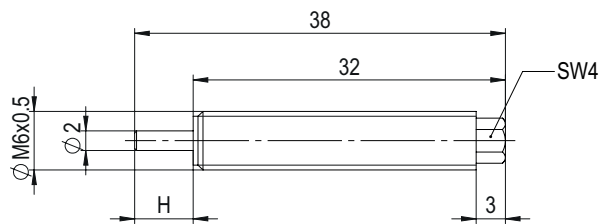
## Stop screw/shock absorber ASSD M5

<b>Order number</b>	<b>50599453</b>
Net weight	0.001 kg
Max. energy input/stroke	0.8 Nm
Max. energy input/s	2100 Nm
Suitable for	CS 8/...-SD



## Stop screw/shock absorber ASSD M6

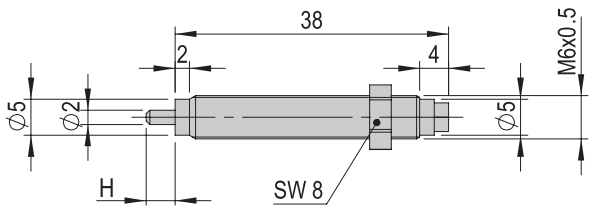
<b>Order number</b>	<b>50599454</b>
Net weight	0.001 kg
Max. energy input/stroke	1.0 Nm
Max. energy input/s	34 Nm
Suitable for	CS 12/...-SD



# Shock absorbers SD

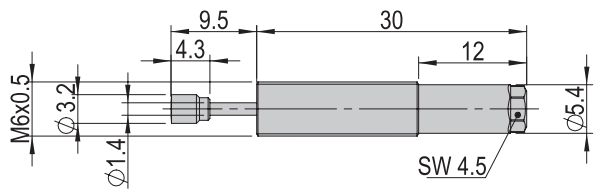
## Shock absorber SD M6x0.5 -2

<b>Order number</b>	<b>50310020</b>
Stroke H	4 mm
Net weight	0.007 kg
Max. energy input/stroke	1.5 Nm
Max. energy input/s	3 200 Nm
Suitable for	CR 12



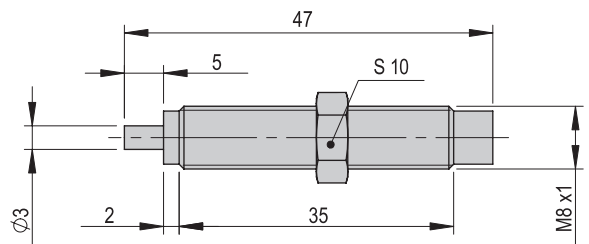
## Shock absorber SD M6x0.5 -3

<b>Order number</b>	<b>50287720</b>
Net weight	0.007 kg
Max. energy input/stroke	1 Nm
Max. energy input/s	2 400 Nm
Suitable for	HM 10



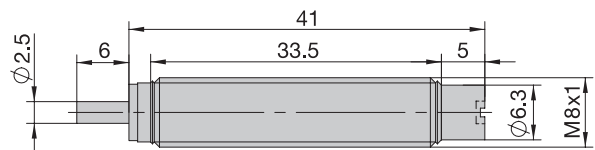
## Shock absorber SD M8x1 -2

<b>Order number</b>	<b>11004990</b>
Net weight	0.016 kg
Max. energy input/stroke	3 Nm
Max. energy input/s	5 650 Nm
Suitable for	LM 12, LM 16 RM 12 GMQ 12, GMQ 20, GMQ 32



## Shock absorber SD M8x1 -3

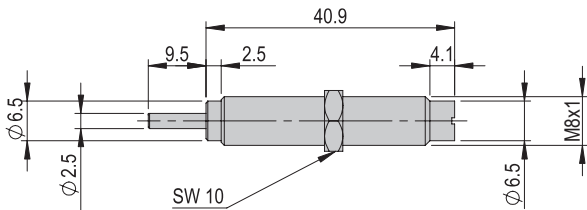
<b>Order number</b>	<b>50041089</b>
Net weight	0.011 kg
Max. energy input/stroke	3 Nm
Max. energy input/s	5 650 Nm
Suitable for	RM 16



# Shock absorbers SD

## Shock absorber SD M8x1 -4

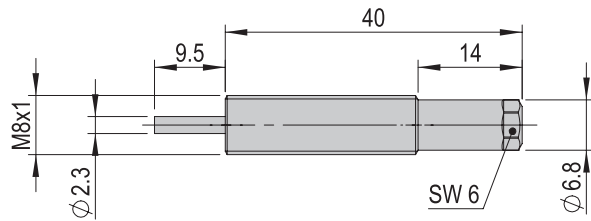
<b>Order number</b>	<b>50177008</b>
Net weight	0.001 kg
Max. energy input/stroke	3.5 Nm
Max. energy input/s	5 600 Nm
Suitable for	CS 16



Note: The shock absorber may only be operated with the stop sleeve!

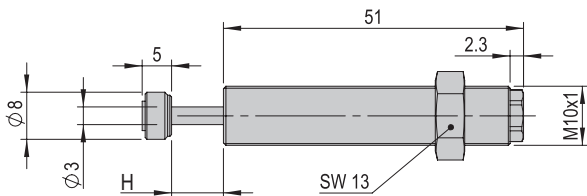
## Shock absorber SD M8x1 -5

<b>Order number</b>	<b>50288020</b>
Net weight	0.013 kg
Max. energy input/stroke	4 Nm
Max. energy input/s	9 000 Nm
Suitable for	HM 16



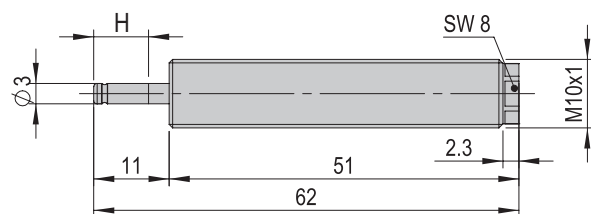
## Shock absorber SD M10x1 -4

<b>Order number</b>	<b>50279077</b>
Stroke H	8 mm
Net weight	0.038 kg
Max. energy input/stroke	12 Nm
Max. energy input/s	20 000 Nm
Suitable for	CR 16, CR 20



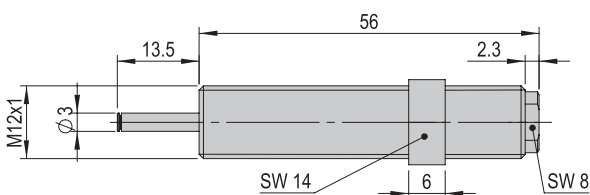
## Shock absorber SD M10x1 -5

<b>Order number</b>	<b>50337721</b>
Stroke H	8 mm
Net weight	0.02 kg
Max. energy input/stroke	10 Nm
Max. energy input/s	18 000 Nm
Suitable for	CS 20



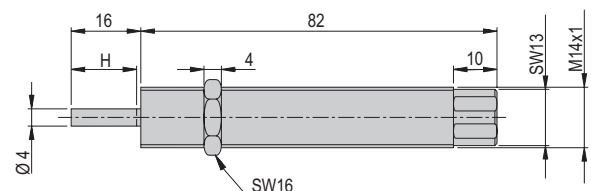
## Shock absorber SD M12x1 -1

<b>Order number</b>	<b>50287972</b>
Net weight	0.035 kg
Max. energy input/stroke	16 Nm
Max. energy input/s	30 000 Nm
Suitable for	HM 25



## Shock absorber SD M14x1 -1

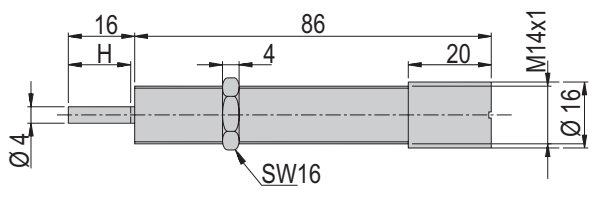
<b>Order number</b>	<b>11004987</b>
Stroke H	15 mm
Net weight	0.065 kg
Max. energy input/stroke	15 Nm
Max. energy input/s	32 000 Nm
Suitable for	LM 20, LM 25, LM 32 RM 25 PMP, PMP-c



# Shock absorbers SD

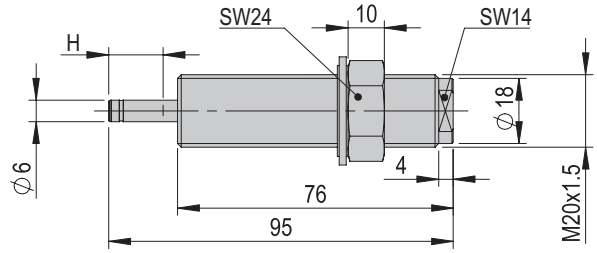
## Shock absorber SD M14x1 -2

<b>Order number</b>	<b>11004988</b>
Stroke H	15 mm
Net weight	0.077 kg
Max. energy input/stroke	17 Nm
Max. energy input/s	34 000 Nm
Suitable for	CS 25



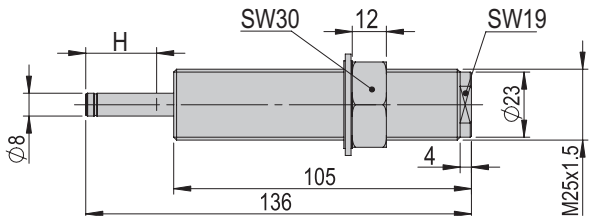
## Shock absorber SD M20x1.5 -1

<b>Order number</b>	<b>50252844</b>
Stroke H	15 mm
Net weight	0.07 kg
Max. energy input/stroke	80 Nm
Max. energy input/s	80 000 Nm
Suitable for	CR 25



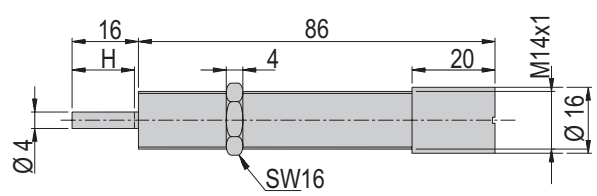
## Shock absorber SD M25x1.5 -1

<b>Order number</b>	<b>50252854</b>
Stroke H	25 mm
Net weight	0.106 kg
Max. energy input/stroke	210 Nm
Max. energy input/s	120 000 Nm
Suitable for	CR 32



## Shock absorber SD M14x1 -2

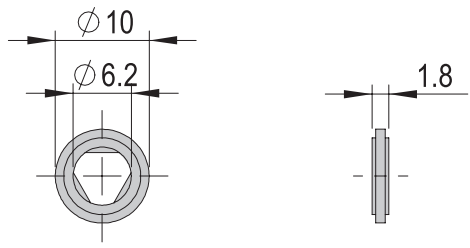
<b>Order number</b>	<b>50001055</b>
Stroke H	15 mm
Net weight	0.077 kg
Max. energy input/stroke	17 Nm
Max. energy input/s	34 000 Nm
Suitable for	CS 25



# Accessories SD

## Seal for SD M6x 0.5-2

<b>Order number</b>	<b>50310021</b>
Net weight	0.001 kg
Suitable for	SD M6x0.5-2



## Seal for SD M10x 1-4

<b>Order number</b>	<b>50300442</b>
Net weight	0.002 kg
Suitable for	SD M10x1-4

