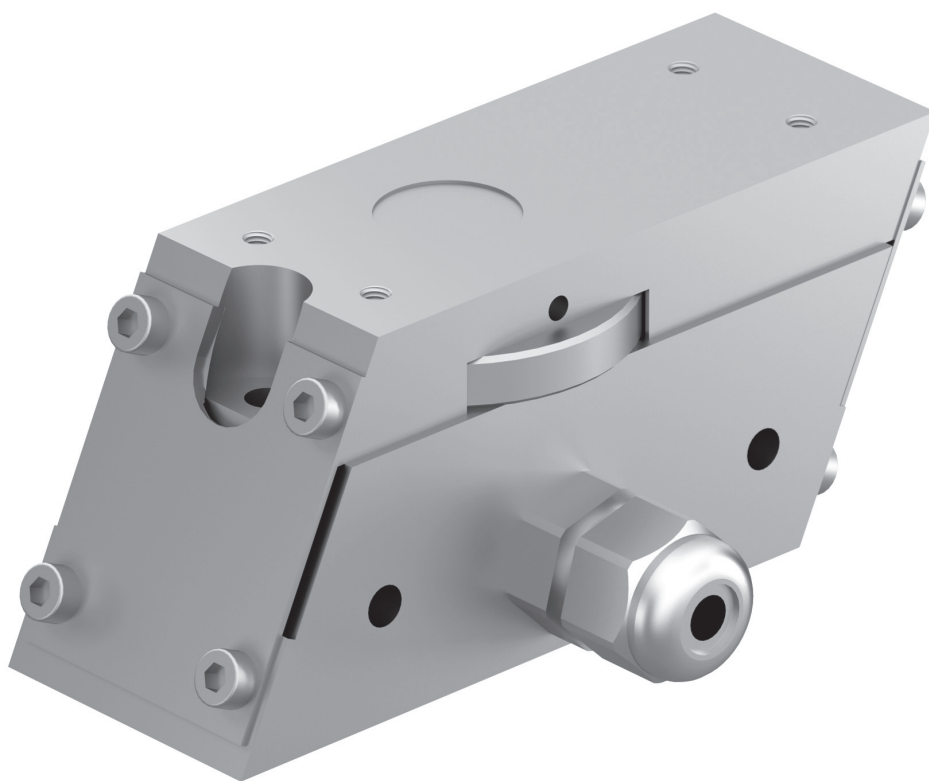


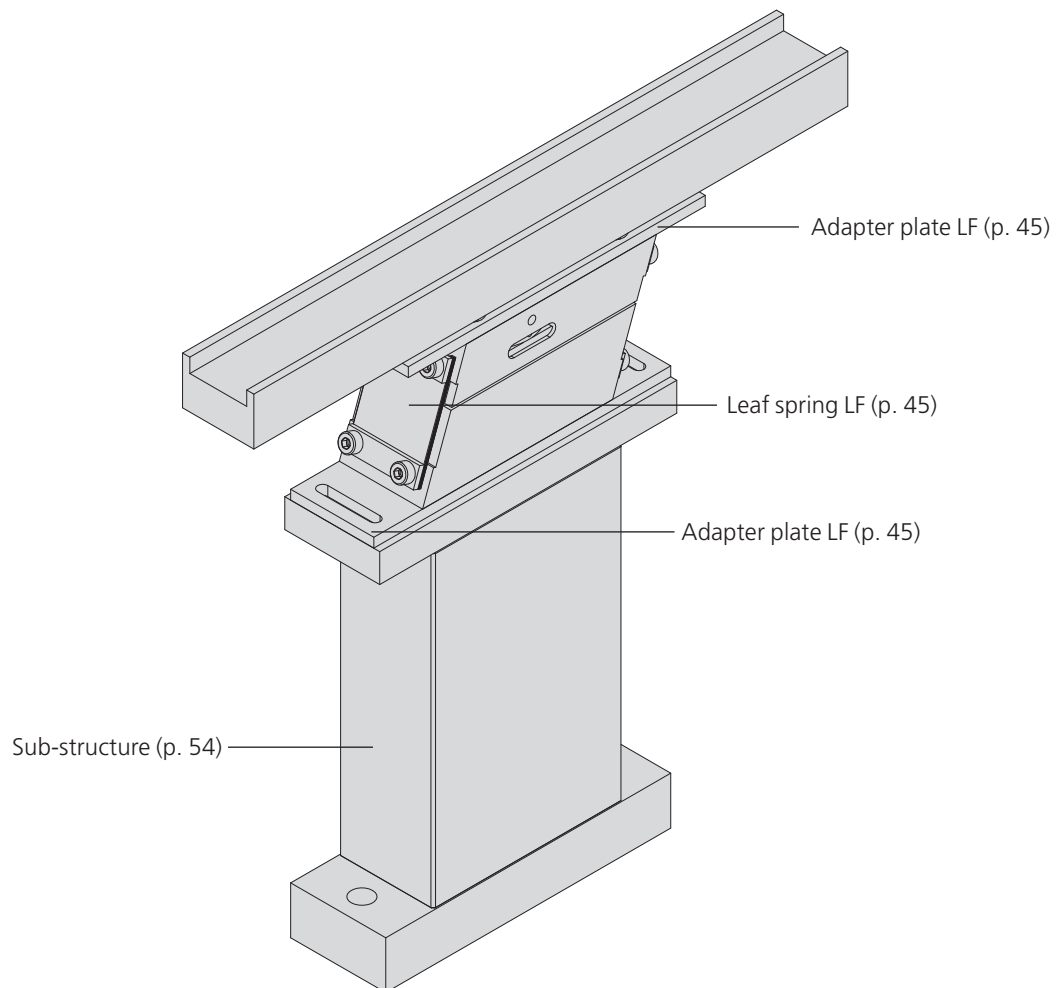
Linear feeder

LF09 & LF11

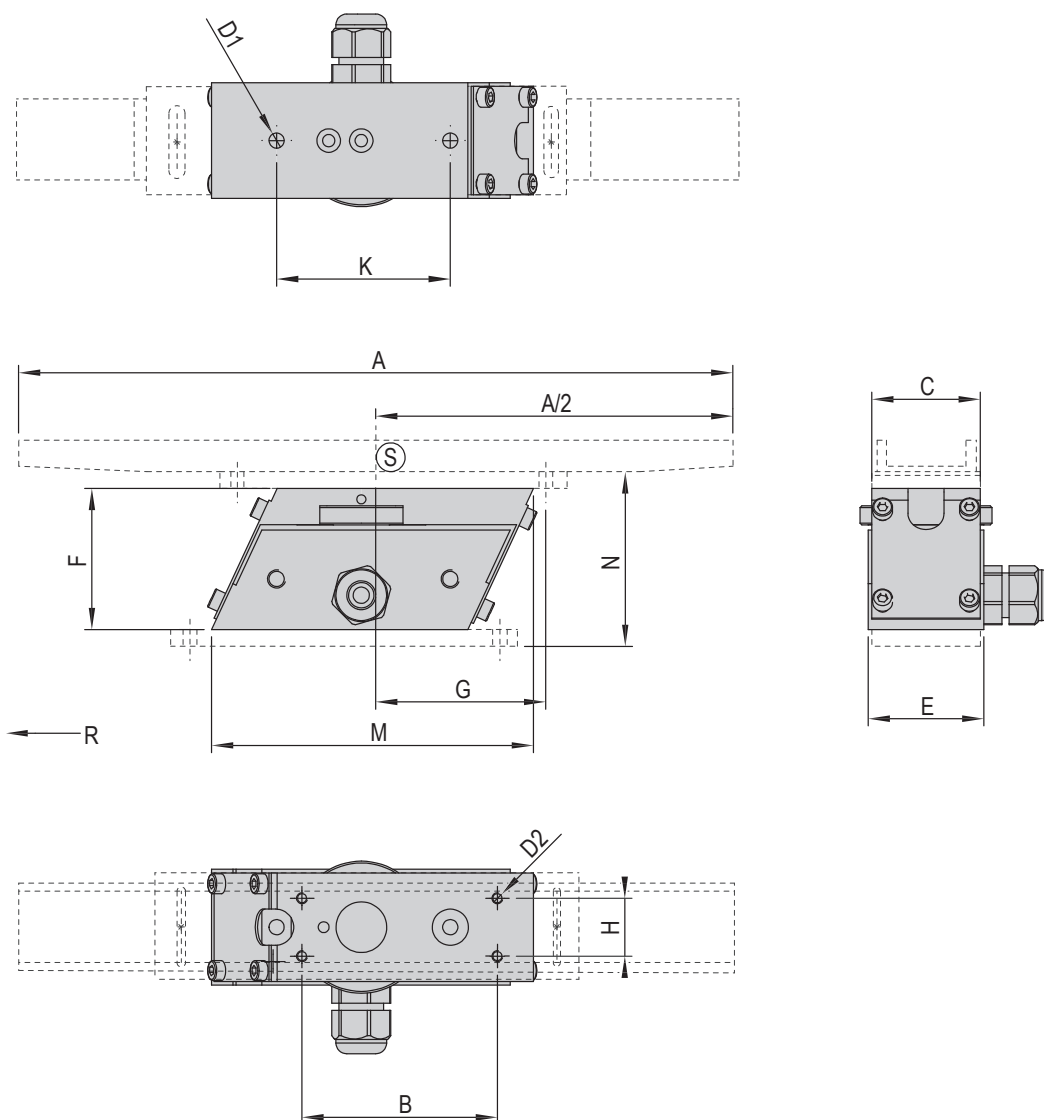


- Very compact design
- Gentle transport for the smallest, light parts

Overview



Type	LF9	LF11
A	250 mm	300 mm
B	54 mm	35 mm
C	30 mm	35 mm
D1	2 x M5	4 x M3
D2	4 x M3	4 x M3
E	32 mm	35 mm
F	39 mm	50 mm
G	44 mm	55.5 mm
H	16 mm	22 mm
I	---	22 mm
K	48 mm	---
L	---	60 mm
M	89 mm	98 mm
N	47 mm	58 mm



R = Feeding direction
S = Track center of gravity

LF	
Operating temperature	10 - 45 °C

Type	LF9	LF11
Order number	15105783	11005757
Mechanical vibration frequency	100 Hz	100 Hz
Mains connection (mains voltage/mains frequency)	230 V/50 Hz	230 V/50 Hz
Max. power consumption	18 VA	46 VA
Net weight	0.7 kg	0.8 kg
Feed rail weight (ideal)	1 kg	1.8 kg
Max. feeder speed	4 m/min	4 m/min
Reactive force compensation	---	---
Protection type	IP40	IP54

Note: --- = nonexistent
Track not included in scope of supply.

Included in delivery

- 2x Leaf spring LF