

Series TaskMaster®

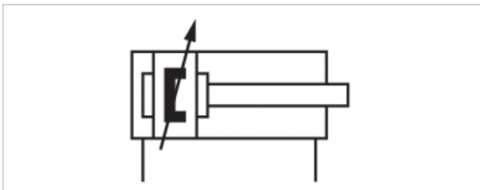


AVENTICS™ Series TaskMaster®



Profile cylinder NFPA, TaskMaster®, Series TM-1

- Bore size: Ø 1-1/2" - 4", Aluminum version
- Ø 38.1-101.6 mm
- Ports 3/8 NPT 1/2 NPT
- double-acting
- with magnetic piston
- Cushioning pneumatically
- Piston rod External thread



Standards

Compressed air connection
 Working pressure min./max.
 Ambient temperature min./max.
 Medium temperature min./max.
 Medium
 Pressure for determining piston forces

NFPA

Internal thread
 1.04 ... 13.79 bar
 -17.78 ... 71.11 °C
 -17.77 ... 71.11 °C
 Compressed air
 6.897 bar

Technical data

Piston Ø Piston rod thread Ports Piston rod Ø	38.1 mm 7/16-20 UNF 3/8 NPT 16 mm	50.8 mm 7/16-20 UNF 3/8 NPT 16 mm	63.5 mm 7/16-20 UNF 3/8 NPT 16 mm	82.55 mm 3/4-16 UNF 1/2 NPT 16 mm	101.6 mm 3/4-16 UNF 1/2 NPT 16 mm
Stroke 25.4	R432020388	R432020604	R432020859	R432021102	R432021306
50.8	R432020390	R432020606	R432020861	R432021104	R432021308
76.2	R432020394	R432020610	R432020863	R432021106	R432021312
101.6	R432020418	R432020636	R432020890	R432021143	R432021339
127	R432020419	R432020638	R432020892	R432021145	R432021340
152.4	R432020422	R432020640	R432020893	R432021148	R432021341
177.8	R432020424	R432020641	R432020894	R432021149	R432021342
203.2	R432020425	R432020643	R432020895	R432021150	R432021343
228.6	R432020427	R432020644	R432020897	R432021151	R432021344
254	R432020429	R432020645	R432020898	R432021153	R432021346
304.8	R432020433	R432020647	R432020900	R432021155	R432021347

Technical data

Piston Ø	38.1 mm	50.8 mm	63.5 mm	82.55 mm	101.6 mm
Retracting piston force	435.94 N	1045.37 N	1832.74 N	3340.75 N	5240.21 N
Extracting piston force	787.37 N	1396.8 N	2184.16 N	3692.17 N	5591.64 N
Weight 0 mm stroke	0.748 kg	1.13 kg	1.61 kg	3.18 kg	4.48 kg
Weight +10 mm stroke	0.091 kg	0.113 kg	0.127 kg	0.204 kg	0.249 kg

Technical information

The pressure dew point must be at least 15 °C under ambient and medium temperature and may not exceed 3 °C .

The oil content of compressed air must remain constant during the life cycle.

Use only the approved oils from AVENTICS. Further information can be found in the "Technical information" document (available in the MediaCentre).

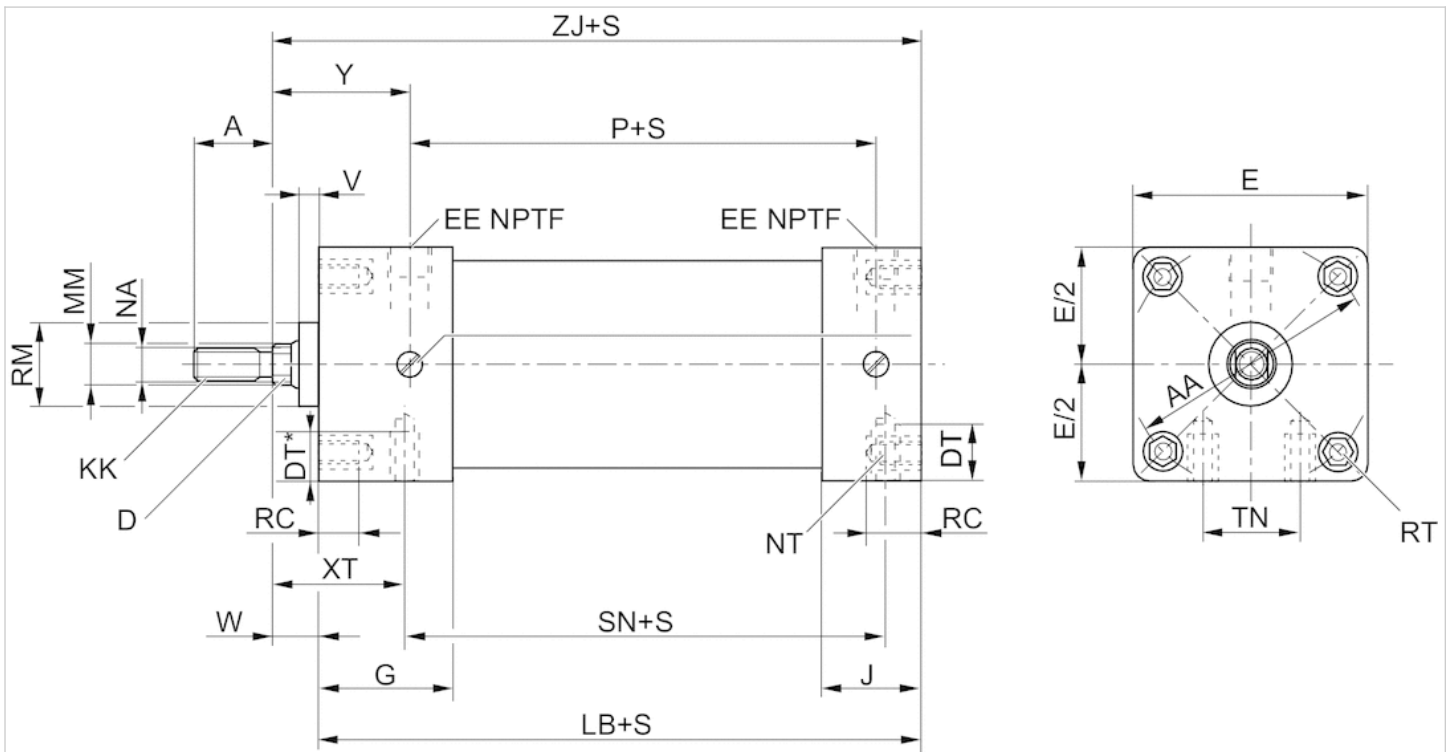
Cushioning not recommended for 3" stroke.

Technical information

Material	
Cylinder tube	Aluminum
Piston rod	Steel, chrome-plated
Front cover	Aluminum, anodized
End cover	Aluminum, anodized
Seal	Polyurethane
Nut for piston rod	Steel, galvanized
Scraper	Polyurethane

Dimensions

Dimensions in inches



S = stroke

Dimensions not affected by rod diameter

∅ [inch]	1 1/2	2	2 1/2	3.25	4
E	2.00	2.50	3.00	3.75	4.5
G	1.72	1.72	1.72	2.25	2.25
J	1.12	1.12	1.25	1.12	1.12
P	2.31	2.31	2.44	2.75	2.69
V	0.25	0.25	0.25	0.25	0.25
AA	2.02	2.60	3.10	3.90	4.7
LB	4.03	4.03	4.16	4.88	4.88
NT	1/4-20	5/16-18	3/8-16	1/2-13	1/2-13
RC	0.47	0.50	0.50	0.53	0.53
RT	1/4-28	5/16-24	5/16-24	3/8-24	3/8-24
SN	2.25	2.25	2.38	2.62	2.62
TN	0.62	0.88	1.25	1.5	2.06

Dimensions affected by rod diameter

∅ [inch]	1 1/2	1 1/2	2	2	2 1/2	2 1/2	3 1/4	3 1/4	4	4
MM	0.625	1	0.625	1	0.625	1	1	1,375	1	1,375
W	0.62	1	0.62	1	0.62	1	0.75	1	0.75	1
EE	3/8	3/8	3/8	3/8	3/8	3/8	1/2	1/2	1/2	1/2

Ø [inch]	1 1/2	1 1/2	2	2	2 1/2	2 1/2	3 1/4	3 1/4	4	4
RM	1.12	1.5	1.12	1.5	1.12	1.5	1.5	2.38	1.5	2.38
DT*	0.38	0.38	0.50	0.50	0.69	0.69	0.75	0.75	0.75	0.75
DT**	0.38	0.25	0.50	0.38	0.69	0.50	0.75	0.75	0.75	0.75
ZJ	4.66	5.04	4.66	5.04	4.78	5.16	5.63	5.88	5.63	5.88
A	0.75	1.12	0.75	1.12	0.75	1.12	1.12	1.63	1.12	1.63
D	0.5	0.88	0.5	0.88	0.5	0.88	0.88	1.12	0.88	1.12
NA	0.56	0.94	0.56	0.94	0.56	0.94	0.94	1.31	0.94	1.31
Y	1.79	2.16	1.79	2.16	1.79	2.16	2.39	2.64	2.39	2.64
XT	1.98	2.35	1.98	2.35	1.98	2.35	2.45	2.70	2.45	2.70

* Cap

** Base

Profile cylinder, TaskMaster®, Series TM-8

- Bore size: Ø 1-1/2" - 4", Aluminum version
- Ø 38.1-101.6 mm
- Ports 1/4 NPT 3/8 NPT
- double-acting
- with magnetic piston
- Cushioning pneumatically adjustable
- Piston rod External thread



Compressed air connection	Internal thread
Working pressure min./max.	2 ... 13.79 bar
Ambient temperature min./max.	-17.78 ... 71.11 °C
Medium temperature min./max.	-17.77 ... 71.11 °C
Medium	Compressed air
Pressure for determining piston forces	6.897 bar

Technical data

Piston Ø Piston rod thread Ports Piston rod Ø	38.1 mm 1/2-20 UNF 1/4 NPT 16 mm	50.8 mm 1/2-20 UNF 1/4 NPT 16 mm	63.5 mm 1/2-20 UNF 1/4 NPT 16 mm	82.55 mm 7/8-14 UNF 3/8 NPT 25.4 mm	101.6 mm 7/8-14 UNF 3/8 NPT 25.4 mm
Stroke 25.4	R432021805	R432022232	R432022613	R432022902	R432023256
50.8	R432021812	R432022237	R432022619	R432022906	R432023258
76.2	R432021815	R432022240	R432022625	R432022910	R432023260
101.6	R432021892	R432022318	R432022686	R432022973	R432023314
127	R432021895	R432022323	R432022689	R432022978	R432023317
152.4	R432021901	R432022327	R432022691	R432022981	R432023320
177.8	R432021903	R432022331	R432022696	R432022985	R432023322
203.2	R432021906	R432022332	R432022699	R432022989	R432023325
228.6	R432021908	R432022335	R432022702	R432022992	R432023328
254	R432021911	R432022337	R432022703	R432022994	R432023331
304.8	R432021917	R432022341	R432022708	R432023002	R432023336

Technical data

Piston Ø	38.1 mm	50.8 mm	63.5 mm	82.55 mm	101.6 mm
Retracting piston force	435.94 N	1045.37 N	1832.74 N	3340.75 N	5240.21 N
Extracting piston force	787.37 N	1396.8 N	2184.16 N	3692.17 N	5591.64 N
Weight 0 mm stroke	0.748 kg	1.13 kg	1.61 kg	3.18 kg	4.48 kg
Weight +10 mm stroke	0.091 kg	0.113 kg	0.127 kg	0.204 kg	0.249 kg

Technical information

The pressure dew point must be at least 15 °C under ambient and medium temperature and may not exceed 3 °C .

The oil content of compressed air must remain constant during the life cycle.

Use only the approved oils from AVENTICS. Further information can be found in the "Technical information" document (available in the MediaCentre).

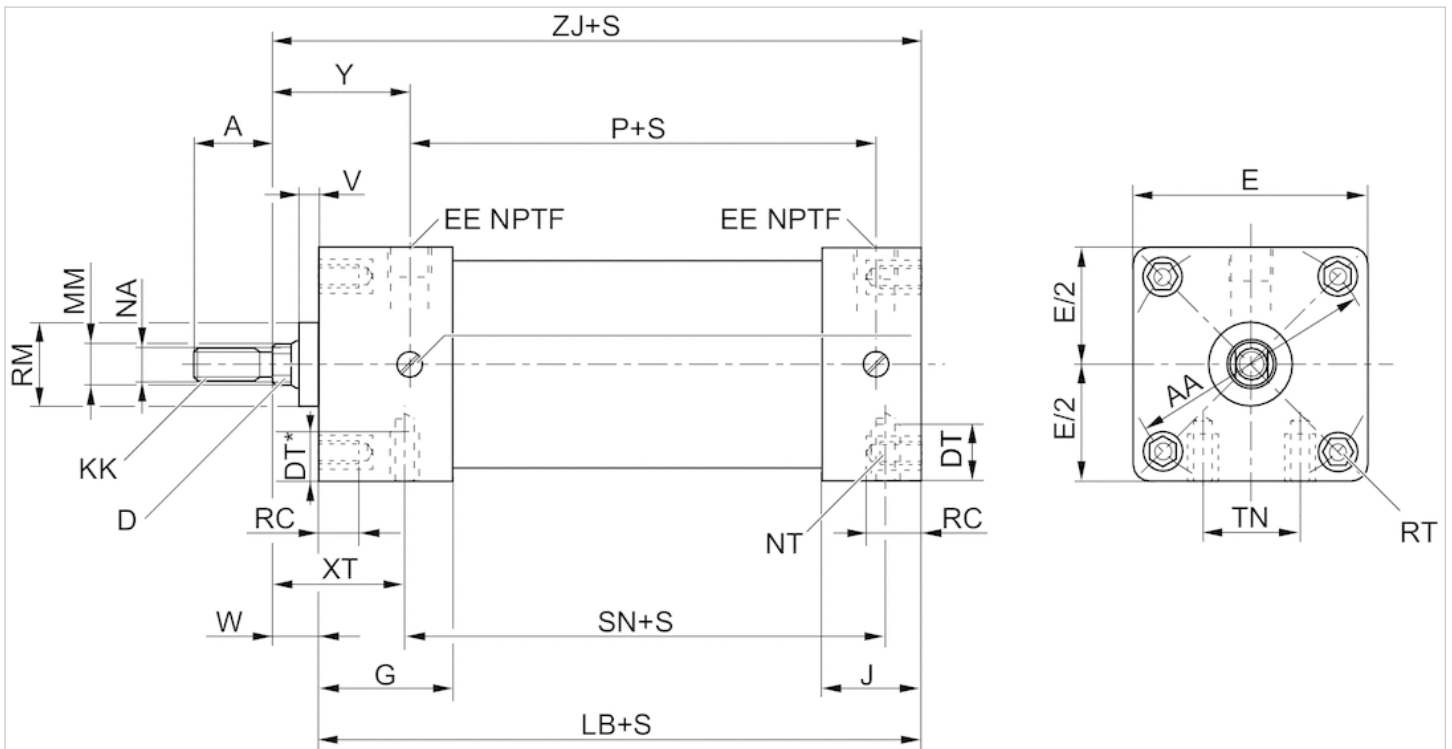
Cushioning not recommended for 3" stroke.

Technical information

Material	
Cylinder tube	Aluminum
Piston rod	Steel, chrome-plated
Piston	Polyamide
Front cover	Aluminum, anodized
End cover	Aluminum, anodized
Seal	Polyurethane

Dimensions

Dimensions in inches



S = stroke

Dimensions not affected by rod diameter

∅ [inch]	1 1/2	2	2 1/2	3.25	4
E	2.00	2.50	3.00	3.75	4.5
G	1.72	1.72	1.72	2.25	2.25
J	1.12	1.12	1.25	1.12	1.12
P	2.31	2.31	2.44	2.75	2.69
V	0.25	0.25	0.25	0.25	0.25
AA	2.02	2.60	3.10	3.90	4.7
LB	4.03	4.03	4.16	4.88	4.88
NT	1/4-20	5/16-18	3/8-16	1/2-13	1/2-13
RC	0.47	0.50	0.50	0.53	0.53
RT	1/4-28	5/16-24	5/16-24	3/8-24	3/8-24
SN	2.25	2.25	2.38	2.62	2.62
TN	0.62	0.88	1.25	1.5	2.06

Dimensions affected by rod diameter

∅ [inch]	1 1/2	1 1/2	2	2	2 1/2	2 1/2	3 1/4	3 1/4	4	4
MM	0.625	1	0.625	1	0.625	1	1	1,375	1	1,375
W	0.59	-	0.59	-	0.59	-	0.75	-	0.75	-
EE	1/4	-	1/4	-	1/4	-	3/8	-	3/8	-

Ø [inch]	1 1/2	1 1/2	2	2	2 1/2	2 1/2	3 1/4	3 1/4	4	4
RM	1.12	1.5	1.12	1.5	1.12	1.5	1.5	2.38	1.5	2.38
DT*	0.38	0.38	0.50	0.50	0.69	0.69	0.75	0.75	0.75	0.75
DT**	0.38	0.25	0.50	0.38	0.69	0.50	0.75	0.75	0.75	0.75
ZJ	4.63	-	4.63	-	4.75	-	5.63	-	5.63	-
A	1.00	-	1.00	-	1.00	-	1.50	-	1.50	-
D	0.5	0.88	0.5	0.88	0.5	0.88	0.88	1.12	0.88	1.12
NA	0.56	0.94	0.56	0.94	0.56	0.94	0.94	1.31	0.94	1.31
Y	1.75	-	1.75	-	1.75	-	2.34	-	2.34	-
XT	1.94	-	1.94	-	1.94	-	2.44	-	2.44	-

* Cap

** Base

Flange mounting, Series MF1, MF2

- Cylinder mounting in accordance with NFPA

- Suitable piston Ø 38.1 50.8 63.5 82.55 101.6 mm



Standards

Weight

NFPA

See table below

Technical data

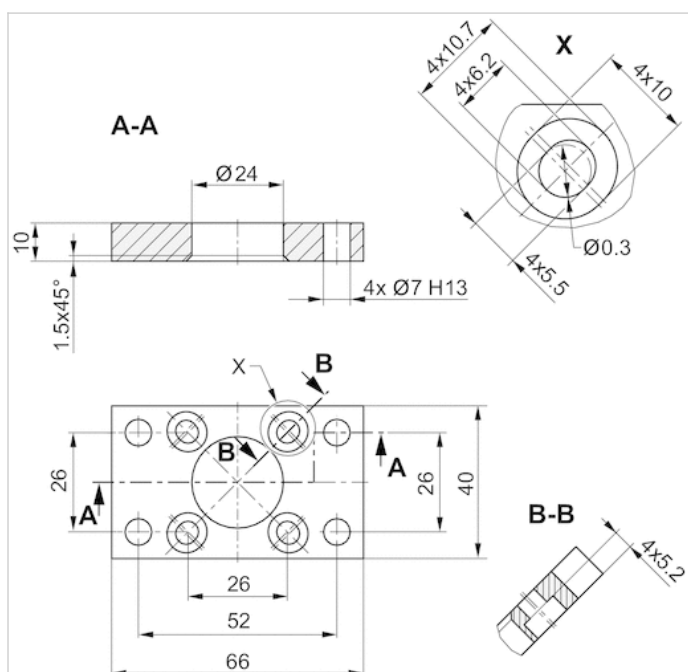
Part No.	Piston Ø	Weight
R432013373	38.1 mm	0.018 kg
R432012520	50.8 mm	0.036 kg
R432013382	63.5 mm	0.054 kg
R432013388	82.55 mm	0.472 kg
R432013396	101.6 mm	0.508 kg

Scope of delivery: flange mounting incl. mounting screws

Technical information

Material	
Material	Aluminum

Dimensions



Dimensions in inches

Part No.	Ø	Ø d1	Ø d2	E	Ø FB	L4	MF	R	TF	UF
R432013373	38.1 mm	-	-	2.00	0.34	-	-	1.43	2.75	3.38
R432012520	50.8 mm	-	-	2.50	0.41	-	-	1.84	3.38	4.13
R432013382	63.5 mm	-	-	3.00	0.41	-	-	2.19	3.88	4.63
R432013388	82.55 mm	-	-	3.50	0.47	-	-	2.76	4.69	5.50
R432013396	101.6 mm	-	-	4.50	0.47	-	-	3.32	5.44	6.25

Fixed Clevis (MP1 mount)

- Cylinder mounting in accordance with NFPA
- Suitable piston Ø 38.1 50.8 63.5 82.55 101.6 mm



Standards
Weight

NFPA
See table below

Technical data

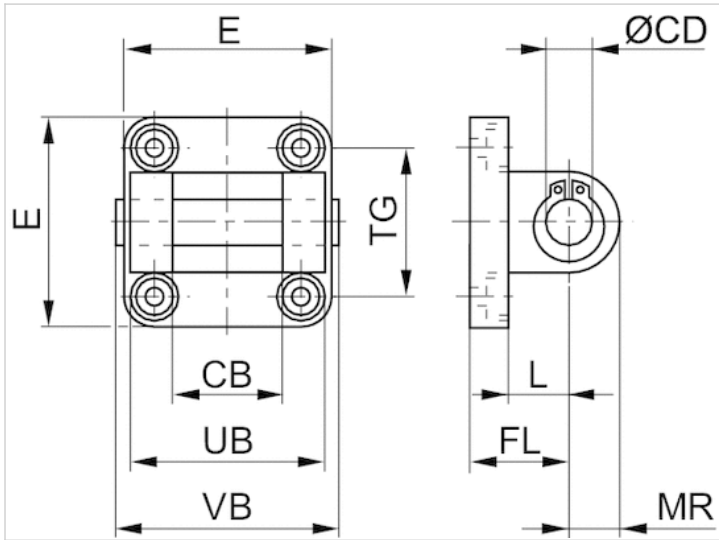
Part No.	Piston Ø	Weight
R432015731	38.1 mm	0.272 kg
R432015733	50.8 mm	0.454 kg
R432015735	63.5 mm	0.635 kg
R432015737	82.55 mm	1.27 kg
R432015739	101.6 mm	1.72 kg

Scope of delivery: clevis mounting incl. mounting screws

Technical information

Material	
Material	Cast iron

Dimensions



Dimensions in inches

Part No.	\varnothing	CB H14	\varnothing CD H9	E	FL	L	MR	CB	UB	VB	TG
R432015731	1.5	0.75	0.500	2.00	0.76	0.38	0.63	-	-	-	-
R432015733	2.0	0.75	0.500	2.50	0.76	0.38	0.63	-	-	-	-
R432015735	2.5	0.75	0.500	3.00	0.76	0.38	0.63	-	-	-	-
R432015737	3.25	1.25	0.750	3.75	1.26	0.63	0.88	-	-	-	-
R432015739	4.0	1.25	0.750	4.50	1.26	0.63	0.88	-	-	-	-

Detachable Clevis (MP2 mount)

- Cylinder mounting in accordance with NFPA
- Suitable piston Ø 38.1 50.8 63.5 85.09 82.55 101.6 mm



Standards
Weight

NFPA
See table below

Technical data

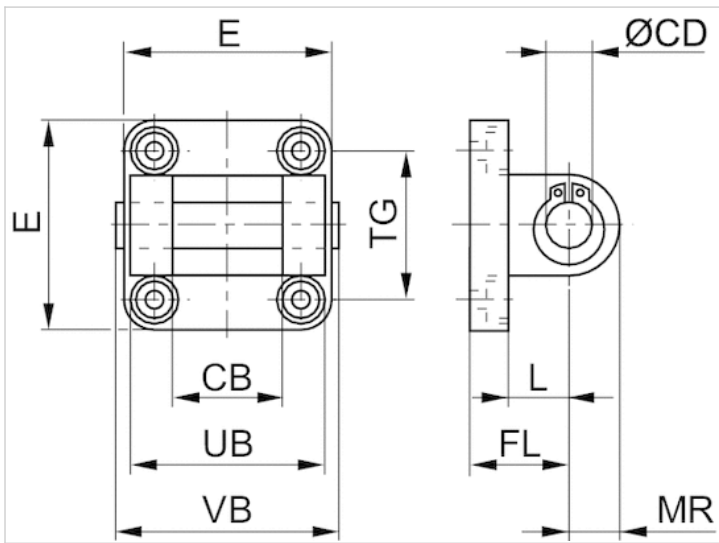
Part No.	Piston Ø	Housing material	Weight
R432013371	38.1 mm	Aluminum	0.036 kg
R432008309	38.1 mm	Steel	0.064 kg
R432012512	50.8 mm	Aluminum	0.036 kg
R432008305	50.8 mm	Steel	0.635 kg
R432013379	63.5 mm	Aluminum	0.054 kg
R432008306	63.5 mm	Steel	0.49 kg
R432013394	85.09 mm	Aluminum	0.508 kg
R432008307	82.55 mm	Steel	1.42 kg
R432013402	101.6 mm	Aluminum	1.09 kg
R432008308	101.6 mm	Steel	1.87 kg

Scope of delivery: clevis mounting incl. pivot pins and mounting screws

Technical information

Material	
Material	Aluminum Steel

Dimensions



Dimensions in inches

Part No.	Ø	CB H14	Ø CD H9	E	FL	L	MR	CB	UB	VB	TG
R432013371	1.5	0.75	0.500	2.00	1.13	0.75	0.53	-	-	-	-
R432008309	1.5	0.75	0.500	2.00	1.13	0.75	0.69	-	-	-	-
R432012512	2.0	0.75	0.500	2.50	1.13	0.75	0.53	-	-	-	-
R432008305	2.0	0.75	0.500	2.50	1.13	0.75	0.53	-	-	-	-
R432013379	2.5	0.75	0.500	3.00	1.13	0.75	0.53	-	-	-	-
R432008306	2.5	0.75	0.500	3.00	1.13	0.75	0.53	-	-	-	-
R432013394	3.25	1.25	0.750	3.75	1.87	1.31	0.88	-	-	-	-
R432008307	3.25	1.25	0.750	3.75	1.88	1.25	1.00	-	-	-	-
R432013402	4.0	1.25	0.750	4.50	1.88	1.25	0.78	-	-	-	-
R432008308	4.0	1.25	0.750	4.50	1.88	1.25	1.00	-	-	-	-

Rear eye, Series MP4

- Cylinder mounting in accordance with NFPA
- Suitable piston Ø 38.1 50.8 63.5 82.55 101.6 mm



Standards
Weight

NFPA
See table below

Technical data

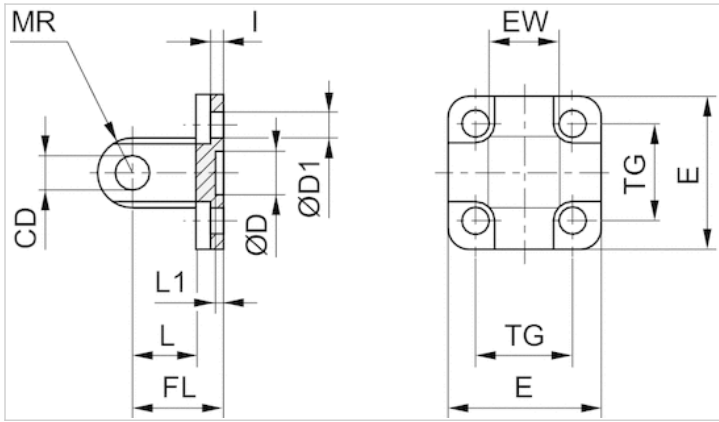
Part No.	Piston Ø	Weight
R432013369	38.1 mm	0.363 kg
R432012549	50.8 mm	0.363 kg
R432013377	63.5 mm	0.408 kg
R432013392	82.55 mm	0.771 kg
R432013400	101.6 mm	0.508 kg

Scope of delivery: clevis incl. mounting screws

Technical information

Material	
Material	Aluminum

Dimensions



Dimensions in inches

Part No.	Ø	CD H9	Ø D	Ø D1	E	EW	FL	L
R432013369	1.5	0.500	-	-	2.00	0.75	1.13	0.75
R432012549	2.0	0.500	-	-	2.50	0.75	1.13	0.75
R432013377	2.5	0.500	-	-	3.00	0.75	1.13	0.75
R432013392	3.25	0.750	-	-	3.75	1.25	1.88	1.25
R432013400	4.0	0.750	-	-	4.50	1.25	1.88	1.25

Foot mounting, Series MS1

- Cylinder mounting in accordance with NFPA
- Suitable piston \varnothing 38.1 50.8 63.5 82.55 101.6 mm



Standards
Weight

NFPA
See table below

Technical data

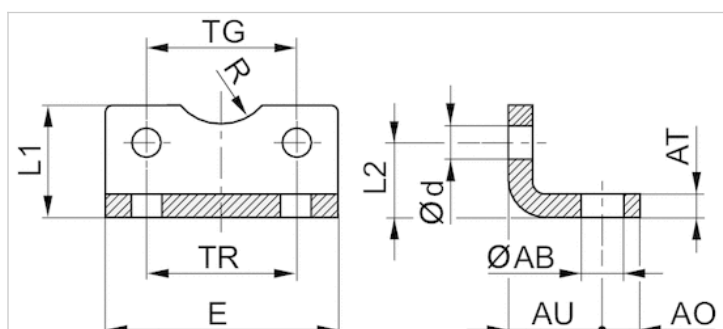
Part No.	Piston \varnothing	Weight
R432013623	38.1 mm	0.027 kg
R432013625	50.8 mm	0.036 kg
R432013628	63.5 mm	0.041 kg
R432013631	82.55 mm	0.064 kg
R432013634	101.6 mm	0.454 kg

Technical information

Material

Material	Steel
----------	-------

Dimensions



Dimensions in inches

Part No.	Ø	AO	AT	AU ±0,2	Ød	E	L1	L2	R	TR
R432013623	1.5	0.37	0.12	-	-	2.00	-	-	-	1.25
R432013625	2.0	0.37	0.12	-	-	2.50	-	-	-	1.75
R432013628	2.5	0.37	0.12	-	-	3.00	-	-	-	2.25
R432013631	3.25	0.50	0.12	-	-	3.75	-	-	-	2.75
R432013634	4.0	0.50	0.12	-	-	4.50	-	-	-	3.50

Foot mounting, MS2 Bore size: Ø 1-1/2" - 2-1/2"

- Suitable piston Ø 38.1 50.8, 63.5 mm



Weight

0.272 kg

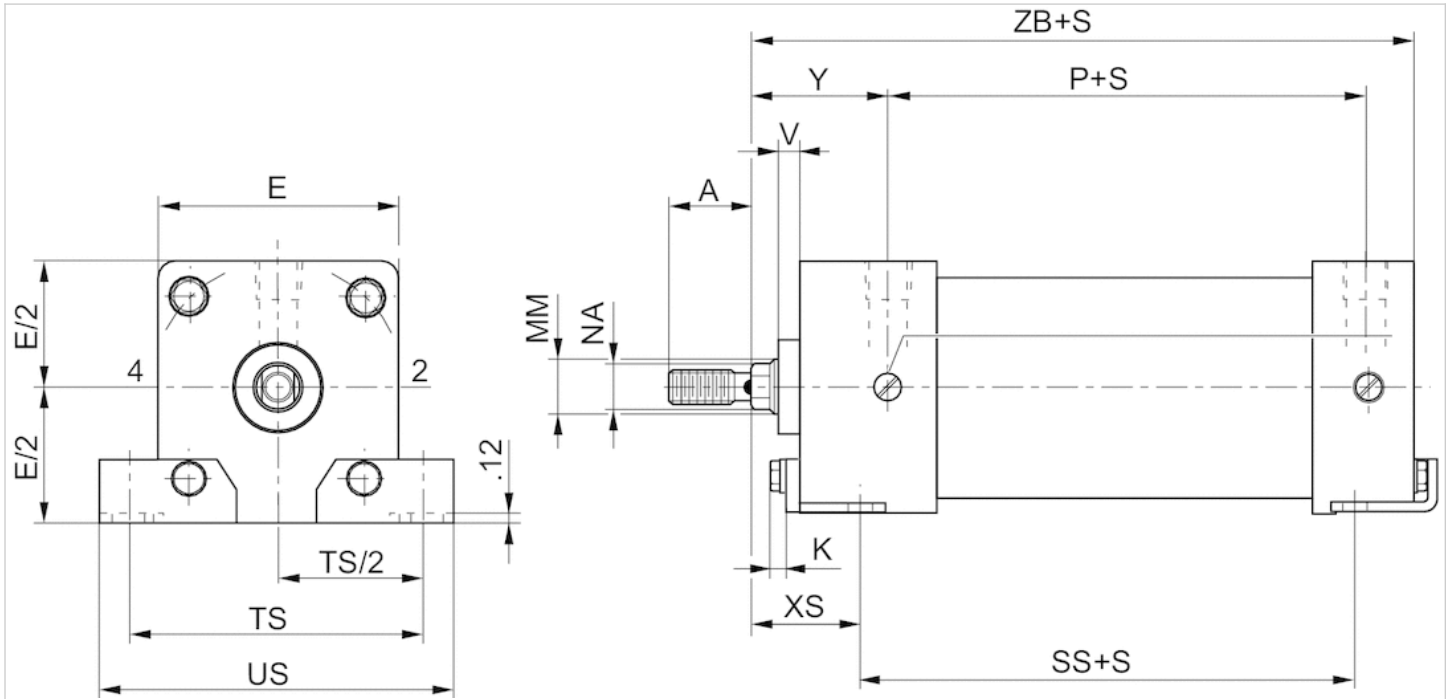
Technical data

Part No.	Piston Ø
R432013616	38.1 mm
R432013641	50.8, 63.5 mm

Technical information

Material	
Material	Steel

Dimensions



Dimensions in inches

Part No.	Ø	MM	C	F	K	W
R432013616	1.5	0.625	0.75	2.00	0.23	0.59
R432013641	2.0	0.625	0.75	2.5	0.28	0.59
	2.5	0.625	0.75	3.0	0.28	0.59

SB	SS	ST	SU	SW	SY	SZ
0.44	2.88	0.12	0.48	0.88	0.9	0.5
0.44	2.88	0.12	0.48	0.88	0.9	0.5
0.44	3.0	0.12	0.48	0.88	0.9	0.5

TS	US	XS	ZB
2.75	3.43	1.38	4.62
3.32	4.08	1.38	4.62
3.67	4.43	1.38	4.75

Foot mounting, MS2 Bore size: Ø 3-1/4" - 4"

- Suitable piston Ø 82.55 101.6 mm



Weight

See table below

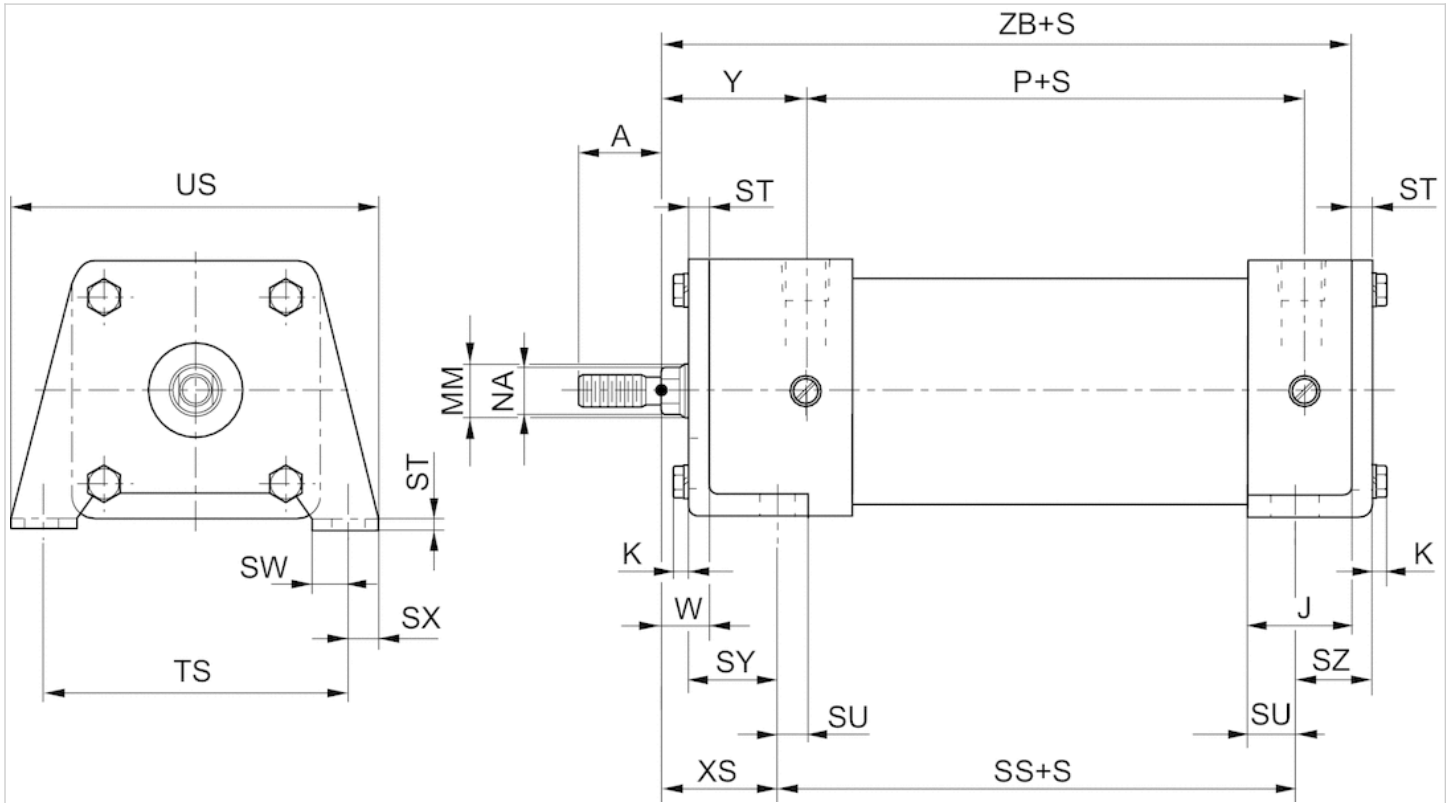
Technical data

Part No.	Piston Ø	Weight
R432013648	82.55 mm	0.962 kg
R432013651	101.6 mm	1.83 kg

Technical information

Material	
Material	Steel

Dimensions



Dimensions in inches

Part No.	Ø	MM	E	K	W	SB	SS	ST	SU	SW	SX	SY	SZ	TS	US	XS	ZB
R432013648	3.25	1.0	3.75	0.34	0.75	0.56	3.25	0.25	0.62	0.5	0.5	1.38	0.75	4.75	5.75	1.88	5.62
R432013651	4.0	1.0	4.5	0.34	0.75	0.56	3.25	0.31	0.62	0.5	0.5	1.44	0.81	5.5	6.5	1.88	5.62

Trunnion mounting, Series MT1, MT2

- Suitable piston Ø 38.1 50.8 63.5 82.55 101.6 mm



Weight

See table below

Technical data

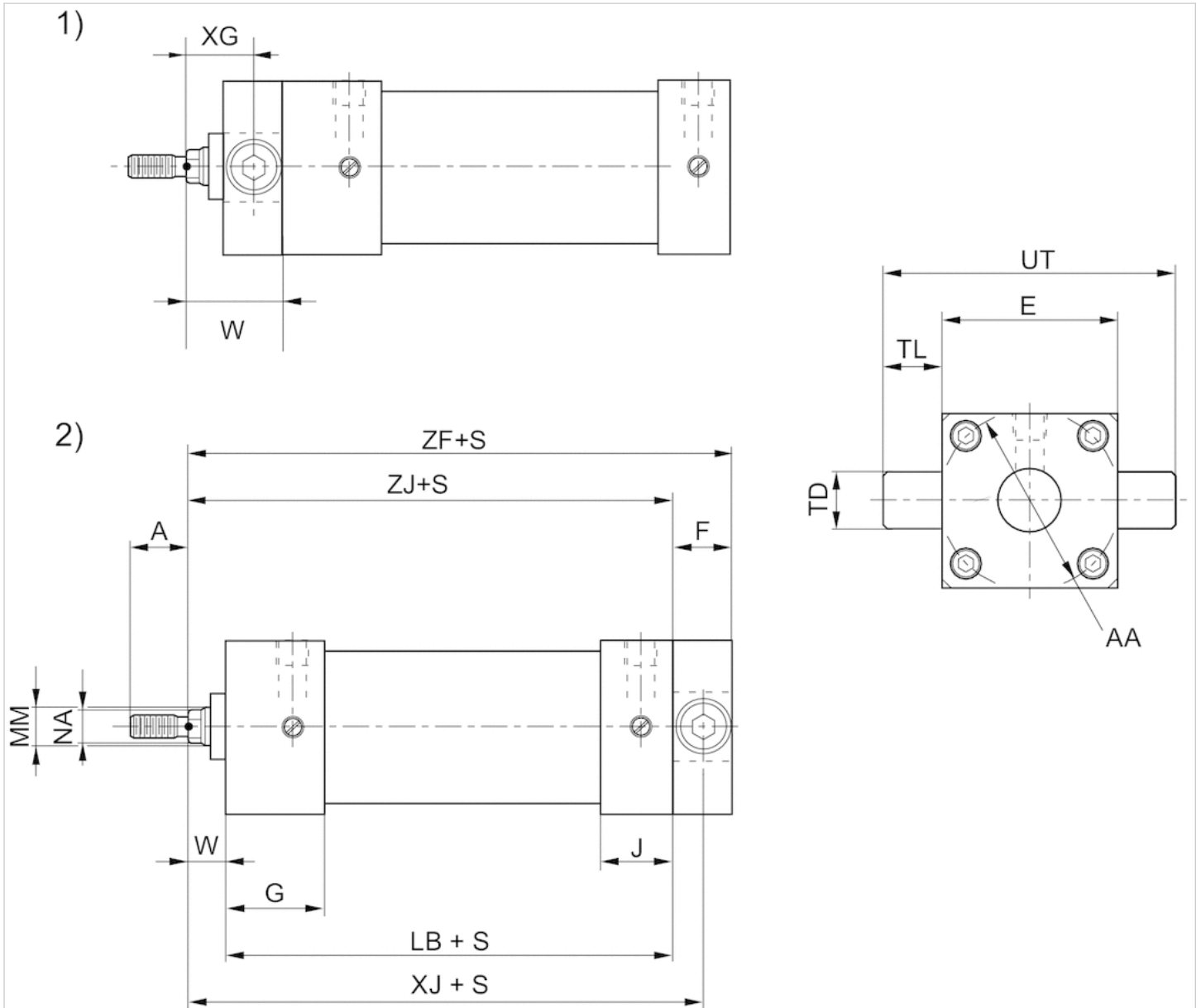
Part No.	Piston Ø	Weight
R432013510	38.1 mm	0.054 kg
R432013507	50.8 mm	0.454 kg
R432013513	63.5 mm	0.472 kg
R432013489	82.55 mm	0.508 kg
R432013516	101.6 mm	0.943 kg

Scope of delivery: trunnion mounting incl. mounting screws

Technical information

Material	
Material	Aluminum chill casting

Dimensions



1) MT1, front end cover
2) MT2, rear end cover

Dimensions in inches

Part No.	Ø	MM	E	F	W	AA	LB	TD	TL	UT	XG 1)	XJ 2)	ZF
R432013510	1.5	0.625	2.00	1.00	1.38 1) 0.59 2)	2.02	4.03	1.00	1.00	4.00	0.88	5.13	5.63
R432013507	2.0	0.625	2.5	1.00	1.38 1) 0.59 2)	2.6	4.03	1.00	1.00	4.00	0.88	5.13	5.63
R432013513	2.5	0.625	3.00	1.00	1.38 1) 0.59 2)	3.1	4.16	1.00	1.00	5.00	0.88	5.25	5.75
R432013489	3.25	1.00	3.75	1.00	1.5 1) 0.75 2)	3.90	4.88	1.00	1.00	5.75	1.00	6.13	6.63

Part No.	Ø	MM	E	F	W	AA	LB	TD	TL	UT	XG 1)	XJ 2)	ZF
R432013516	4.0	1.00	4.50	1.00	1.5 1) 0.75 2)	4.70	4.88	1.00	1.00	6.5	1.00	6.13	6.63

ZJ
4.63
4.63
4.75
5.63
5.63

1) MT1, front end cover

2) MT2, rear end cover

Mounting kit for extended tie rods, Series MX1, 2, 3, 4

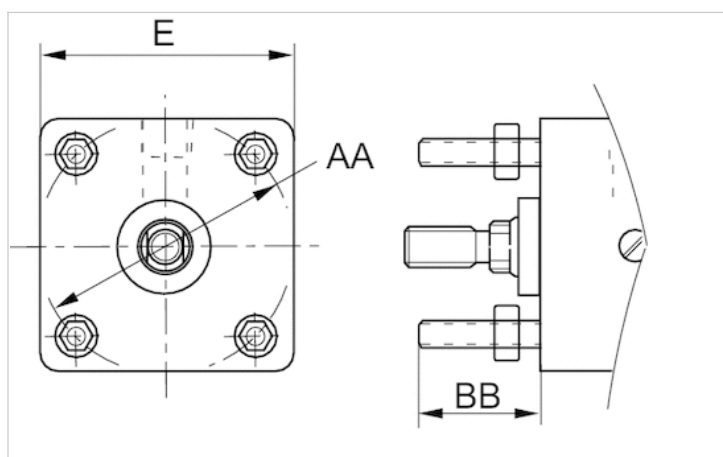


Technical data

Part No.
R432013684
R432013686
R432013688

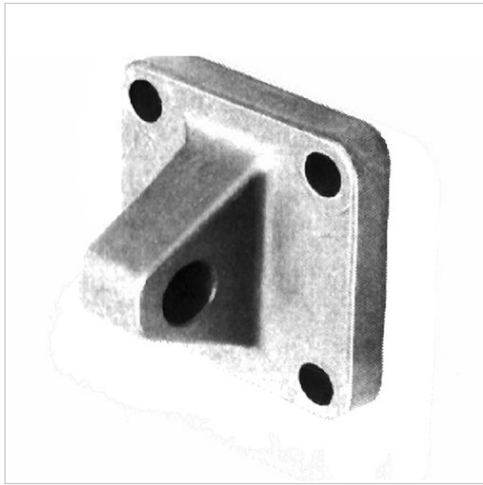
Scope of delivery: ↔2 kits for both ends (MX1) ↔1 kit for base (MX2) ↔1 kit for cover (MX3) ↔2 piston rod extensions at both ends (MX4)

Dimensions



Eye brackets

- Suitable piston Ø 38.1 50.8 63.5 82.55 101.6 mm



Weight

See table below

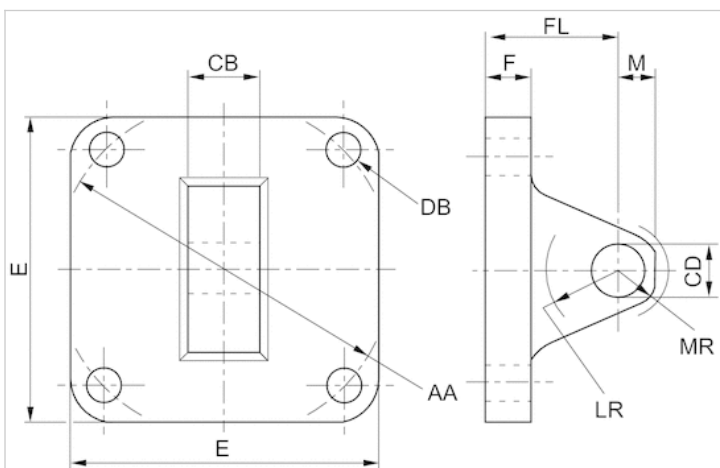
Technical data

Part No.	Piston Ø	Weight
R432013368	38.1 mm	0.018 kg
R432012551	50.8 mm	0.018 kg
R432013376	63.5 mm	0.036 kg
R432008890	82.55 mm	0.472 kg
R432008892	101.6 mm	0.49 kg

Technical information

Material	
Material	Aluminum

Dimensions



Dimensions in inches

Part No.	Ø	E	F	M	AA	CB	CD	DB	FL	LR	MR
R432013368	1.50	2.00	0.38	0.50	2.02	0.75	0.50	0.25	1.13	0.63	0.53
R432012551	2.00	2.50	0.38	0.50	2.60	0.75	0.50	0.31	1.13	0.63	0.53
R432013376	2.50	3.00	0.38	0.50	3.10	0.75	0.50	0.31	1.13	0.63	0.53
R432008890	3.25	3.75	0.63	0.75	3.90	1.25	0.75	0.38	1.88	0.88	0.78
R432008892	4.00	4.504	0.63	0.75	4.70	1.25	0.75	0.38	1.88	0.88	0.78

Clevis mounting

- Suitable piston Ø 38.1 50.8 63.5 82.55 101.6 mm



Weight

See table below

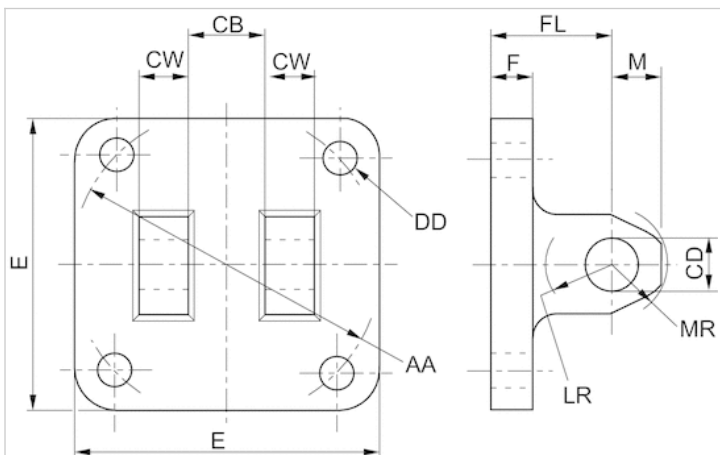
Technical data

Part No.	Piston Ø	Weight
R432013366	38.1 mm	0.018 kg
R432012511	50.8 mm	0.018 kg
R432013381	63.5 mm	0.036 kg
R432008891	82.55 mm	0.463 kg
R432008893	101.6 mm	0.49 kg

Technical information

Material	
Material	Aluminum

Dimensions



Dimensions in inches

Part No.	Ø	E	F	M	AA	CB	CD	CW	DD	FL	LR	MR
R432013366	1.50	2.00	0.38	0.50	2.02	0.75	0.50	0.50	0.25	1.13	0.63	0.53
R432012511	2.00	2.50	0.38	0.50	2.60	0.75	0.50	0.50	0.31	1.13	0.63	0.53
R432013381	2.50	3.00	0.38	0.50	3.10	0.75	0.50	0.50	0.31	1.13	0.63	0.53
R432008891	3.25	3.75	0.63	0.75	3.90	1.25	0.75	0.63	0.38	1.88	0.88	0.78
R432008893	4.00	4.504	0.63	0.75	4.70	1.25	0.75	0.63	0.38	1.88	0.88	0.78

Bolts

- Suitable piston Ø 38.1, 50.8, 63.5 82.55, 101.6, 127 mm



Weight

See table below

Technical data

Part No.	Piston Ø	Weight
R433012619	38.1, 50.8, 63.5 mm	0.018 kg
R433012621	82.55, 101.6, 127 mm	0.036 kg

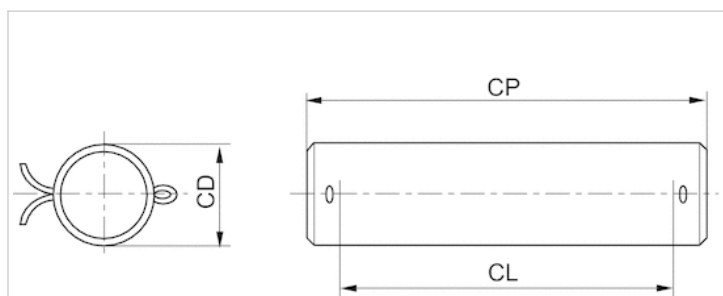
Scope of delivery: pivot pins incl. circlips

Technical information

Material	
Material	Steel

Dimensions

Dimensions in inches



Dimensions in inches

Part No.	CD	CL	CP
R433012619	0.5	1.88	2.09
R433012621	0.75	2.62	2.88

Rod clevis



Technical data

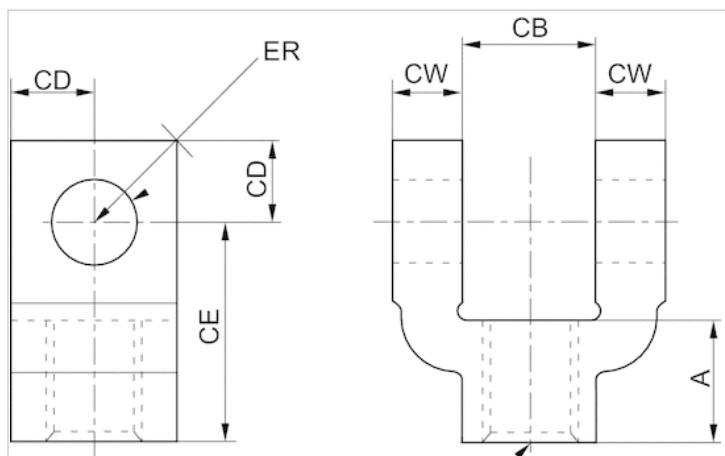
Part No.
R432012516
R432013386

Scope of delivery: pivot pins incl. circlips

Technical information

Material
Aluminum

Dimensions



Dimensions in inches

Part No.	Ø	A	CB	CD	CE	CW	ER
R432012516	1.50	0.75	0.75	0.50	1.50	0.50	0.72
	2.00						
	2.50						
R432013386	3.25	1.13	1.25	0.75	2.06	0.63	1.06
	4.00						

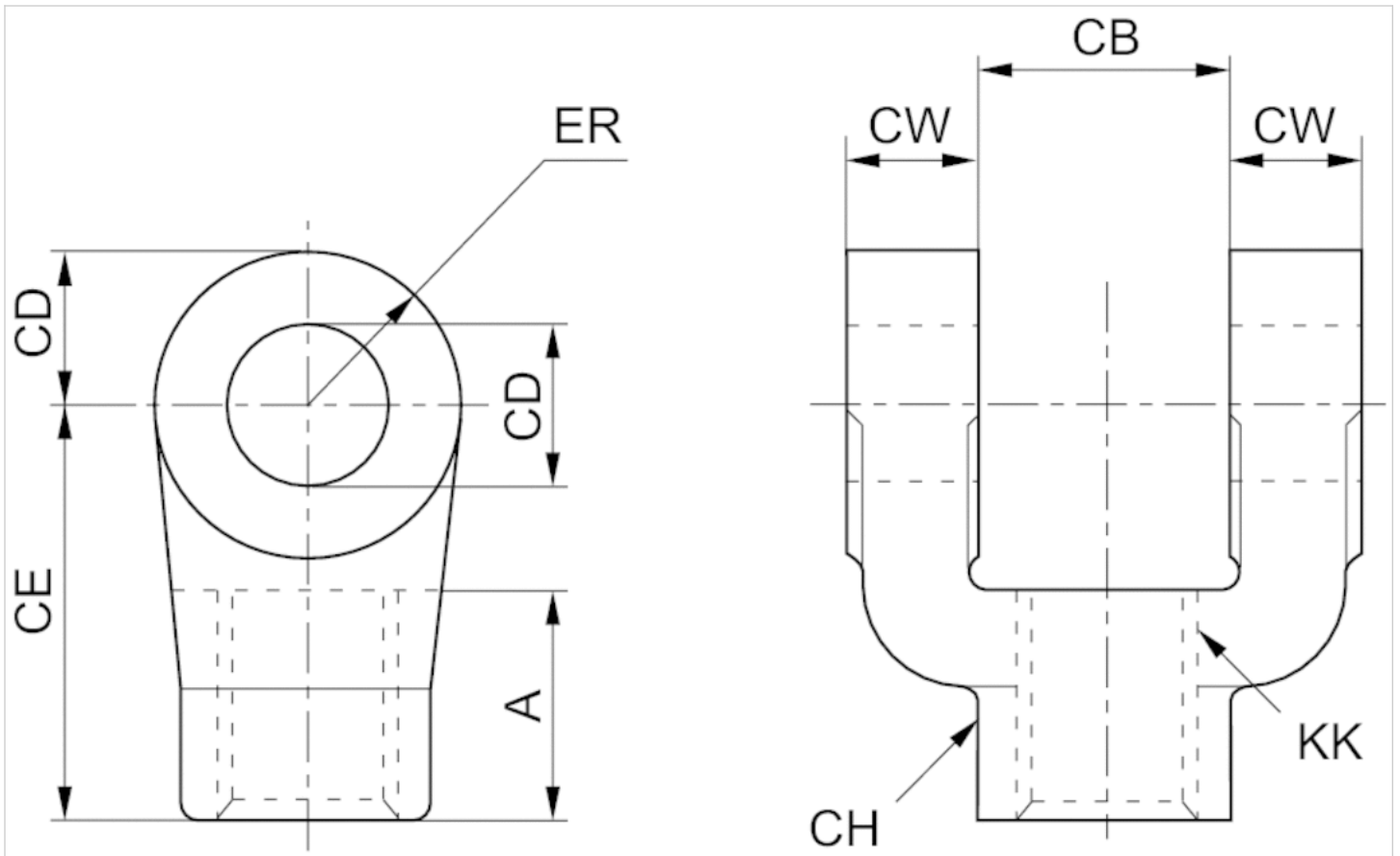
Female rod clevis, Bore size: Ø 5" - 6"



Technical data

Part No.
R433012602
R433012665

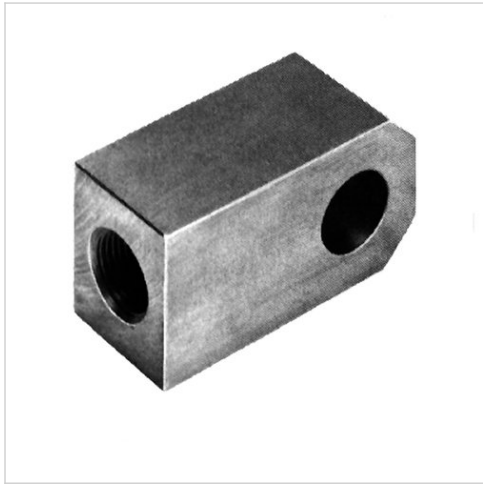
Dimensions



Dimensions

Part No.	Ø	A	CB	CD	CE	CH	CW	ER	KK
R433012602	4.0	0.75	0.75	0.5	0.5	0.78	0.5	0.5	1/2-20
R433012665	4.0	0.75	0.75	0.5	1.5	0.78	0.5	0.5	7/16-21

Female rod eye



Weight

See table below

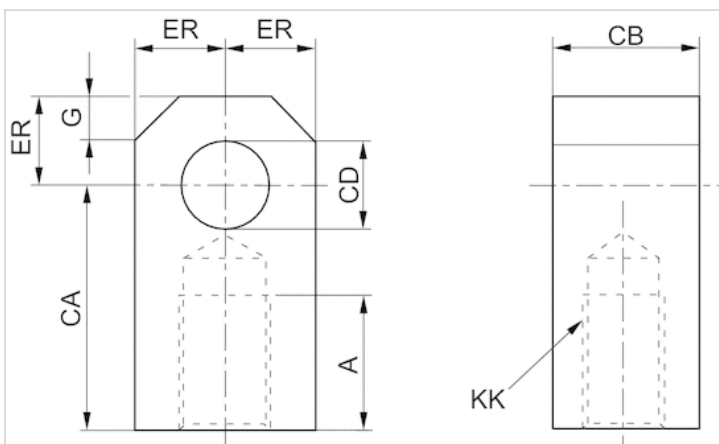
Technical data

Part No.	Weight
R432006533	0.05 kg
R432013437	1 kg

Technical information

Material
Steel

Dimensions



Dimensions in inches

Part No.	∅	A	CA	CB	CD	ER	KK
----------	---	---	----	----	----	----	----

Part No.	Ø	A	CA	CB	CD	ER	KK
R432006533	1.50 2.00 2.50	0.88	1.50	0.75	0.50	0.56	1/2-20
R432013437	3.25 4.00	1.13	2.06	1.25	0.75	0.84	7/8-14

Efficient pneumatic solutions, our program: cylinders and drives, valves and valve systems, air supply management



Visit us: [Emerson.com/Aventics](https://www.emerson.com/Aventics)

Your local contact: [Emerson.com/contactus](https://www.emerson.com/contactus)



[Emerson.com](https://www.emerson.com)



[Facebook.com/EmersonAutomationSolutions](https://www.facebook.com/EmersonAutomationSolutions)



[LinkedIn.com/company/Emerson-Automation-Solutions](https://www.linkedin.com/company/Emerson-Automation-Solutions)



[Twitter.com/EMR_Automation](https://twitter.com/EMR_Automation)

An example configuration is depicted on the title page. The delivered product may thus vary from that in the illustration. Subject to change. This Document, as well as the data, specifications and other information set forth in it, are the exclusive property of AVENTICS GmbH. It may not be reproduced or given to third parties without its consent. Only use the AVENTICS products shown in industrial applications. Read the product documentation completely and carefully before using the product. Observe the applicable regulations and laws of the respective country. When integrating the product into applications, note the system manufacturer's specifications for safe use of the product. The data specified only serve to describe the product. No statements concerning a certain condition or suitability for a certain application can be derived from our information. The information given does not release the user from the obligation of own judgment and verification. It must be remembered that the products are subject to a natural process of wear and aging.

The Emerson logo is a trademark and service mark of Emerson Electric Co. Brand logotype are registered trademarks of one of the Emerson family of companies. All other marks are the property of their respective owners. © 2017 Emerson Electric Co. All rights reserved.
2019-03



CONSIDER IT SOLVED™