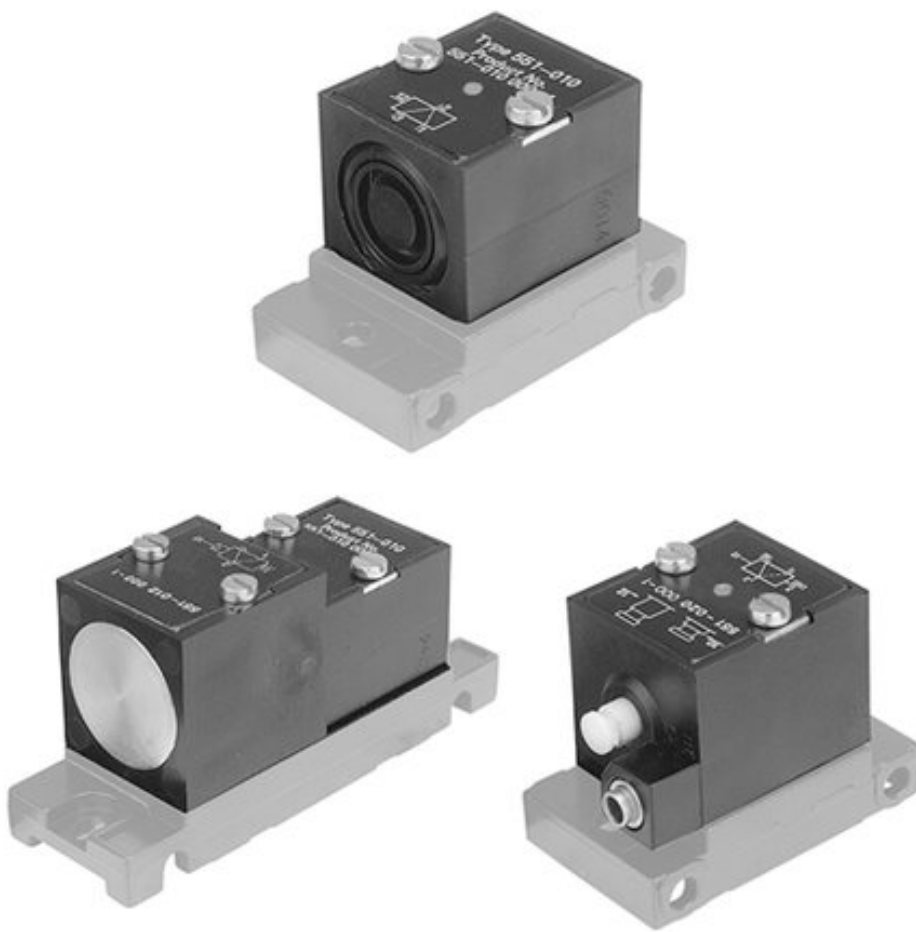


## series 551

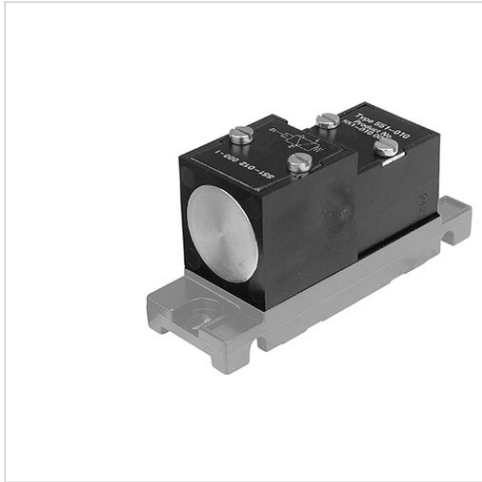


AVENTICS™ series 551






# 3/2-directional valve, Series 551

- Qn = 2-120 l/min
- low pressure operated
- single solenoid



Activation	pneumatically
Working pressure min./max.	2 ... 10 bar
Control pressure min./max.	0.01 ... 0.5 bar
Ambient temperature min./max.	-20 ... 70 °C
Medium temperature min./max.	-20 ... 70 °C
Medium	Compressed air
Max. particle size	5 µm
Oil content of compressed air	0 ... 1 mg/m <sup>3</sup>
Weight	See table below

## Technical data

Part No.	Diagram	Logic function	Flow	Weight	Fig.
			Qn		
5510120000		-	2 l/min	0.06 kg	Fig. 1
5510120100		NC	120 l/min	0.11 kg	Fig. 2
5510121100		NO	120 l/min	0.11 kg	Fig. 2

Nominal flow Qn at 6 bar and  $\Delta p = 1$  bar

## Technical information

The min. control pressure must be adhered to, since otherwise faulty switching and valve failure may result!

The pressure dew point must be at least 15 °C under ambient and medium temperature and may not exceed 3 °C .

The oil content of compressed air must remain constant during the life cycle.

Use only the approved oils from AVENTICS. Further information can be found in the "Technical information" document (available in the MediaCentre).

## Technical information

Material	
Housing	Polyoxymethylene
Seals	Acrylonitrile butadiene rubber

## Dimensions

Fig. 1

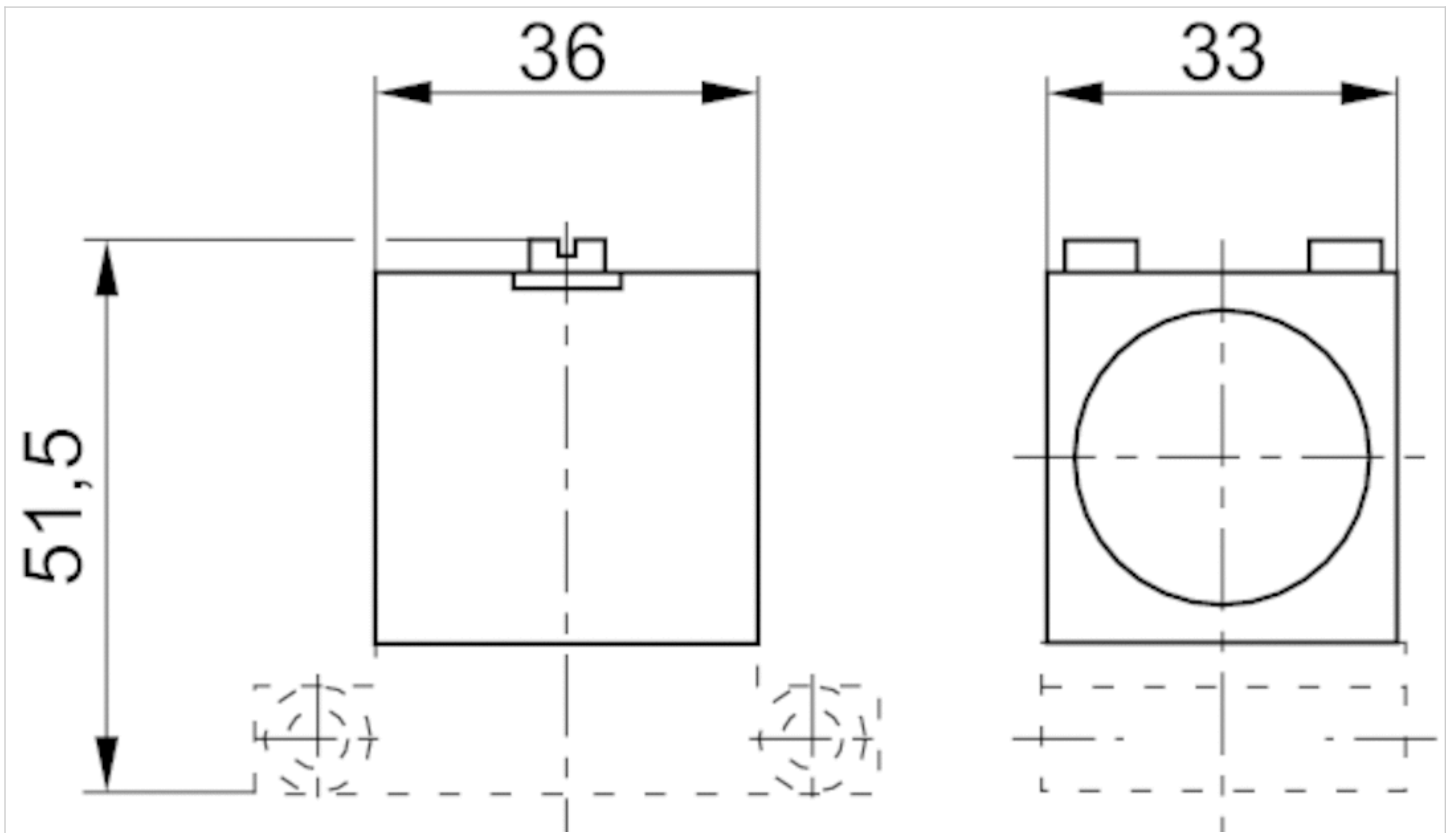
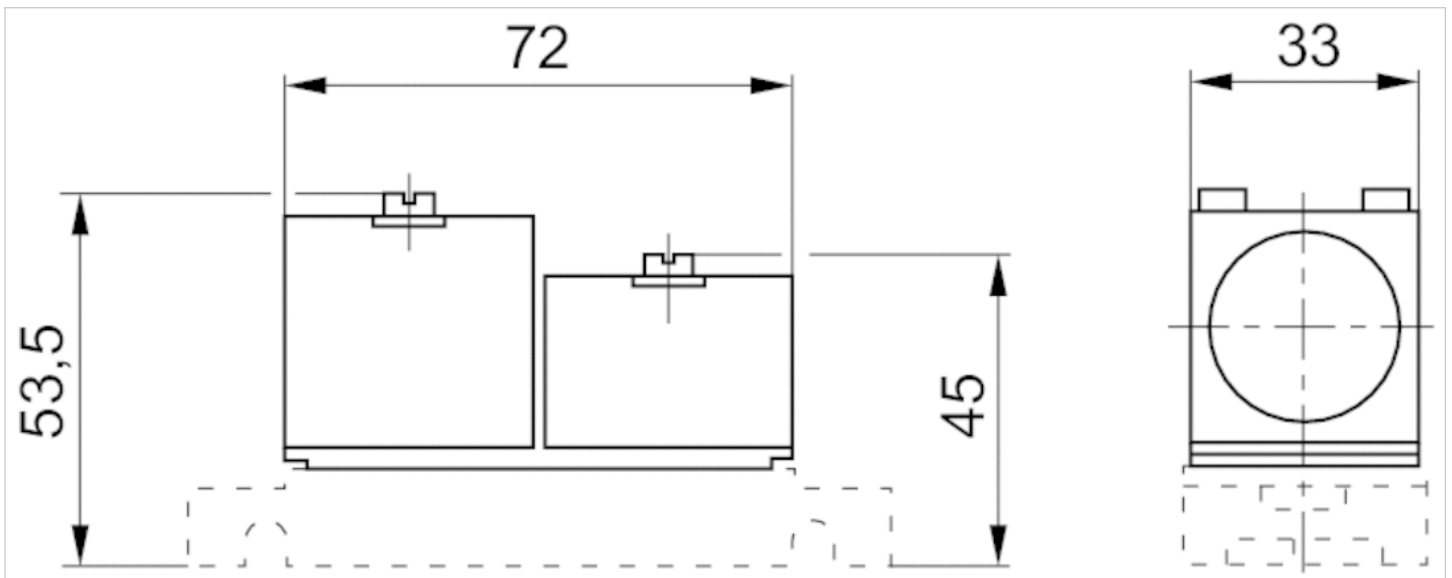


Fig. 2



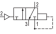
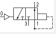

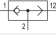
# 3/2-directional valve, Series 551

- Qn = 120 l/min



Working pressure min./max.	1 ... 10 bar
Control pressure min./max.	See table below
Ambient temperature min./max.	-20 ... 70 °C
Medium temperature min./max.	-20 ... 70 °C
Medium	Compressed air
Max. particle size	5 µm
Oil content of compressed air	0 ... 1 mg/m <sup>3</sup>
Weight	See table below

## Technical data

Part No.			Logic function	Flow	Control pressure min./max.	Weight
				Qn		
5510100000		NC	YES	120 l/min	3.2 ... 10 bar	0.045 kg
5511100000		NO	NOT (NO)	120 l/min	3.2 ... 10 bar	0.045 kg
5510140000		-	AND	120 l/min	-	0.045 kg
5510150000		-	Shuttle valves (OR)	120 l/min	-	0.04 kg

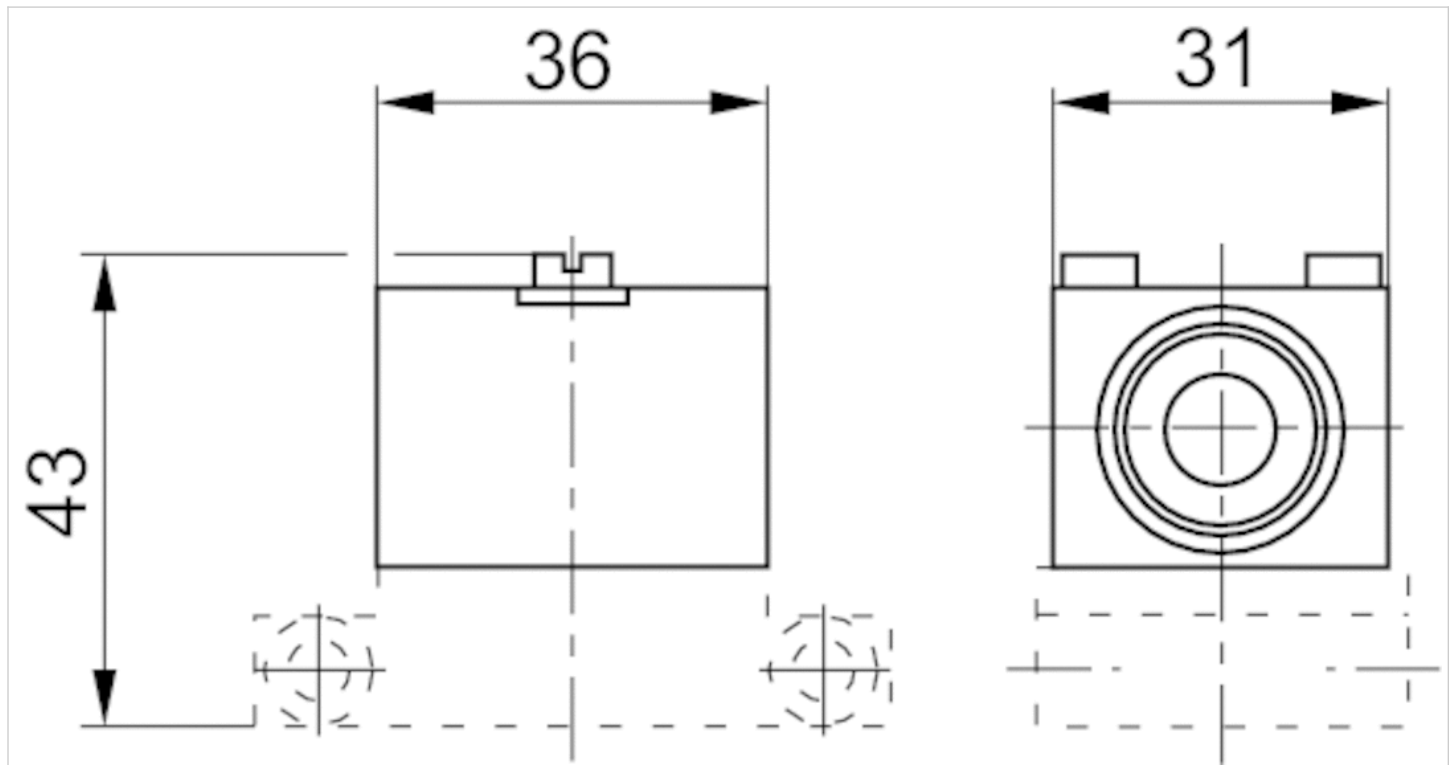
Nominal flow Qn at 6 bar and  $\Delta p = 1$  bar

## Technical information

Material	
Housing	Polyoxymethylene
Seals	Acrylonitrile butadiene rubber

## Dimensions

### Dimensions

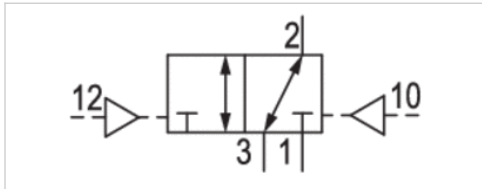


# 3/2-directional valve, Series 551

- Qn = 120 l/min
- double air pilot



Activation	pneumatically
Flow rate value Qn	120 l/min
Working pressure min./max.	0 ... 10 bar
Control pressure min./max.	2 ... 10 bar
Ambient temperature min./max.	-20 ... 70 °C
Medium temperature min./max.	-20 ... 70 °C
Medium	Compressed air
Max. particle size	5 µm
Oil content of compressed air	0 ... 1 mg/m³
Weight	0.06 kg



## Technical data

Part No.
5510200000

Nominal flow Qn at 6 bar and Δp = 1 bar

## Technical information

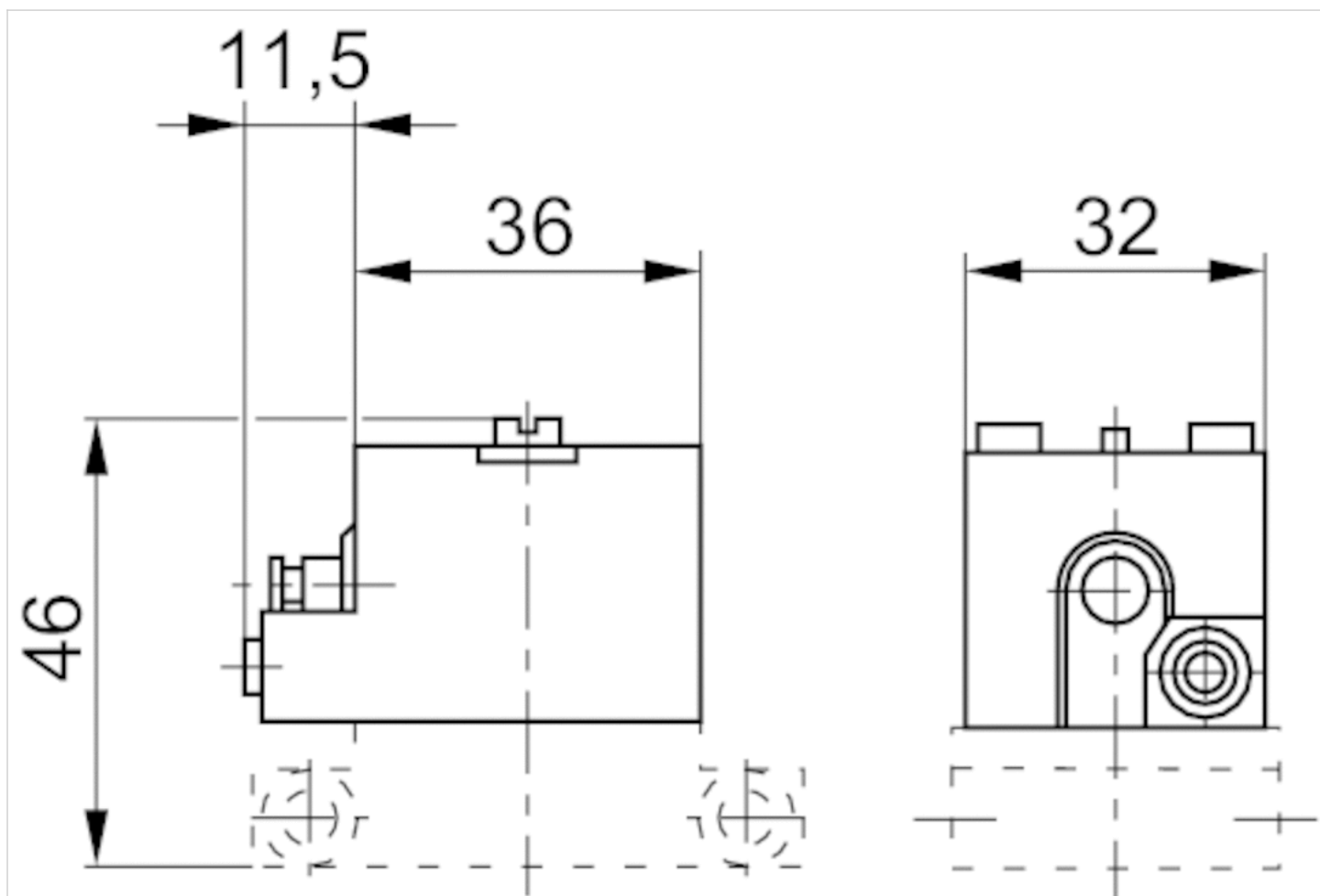
The min. control pressure must be adhered to, since otherwise faulty switching and valve failure may result!  
 The pressure dew point must be at least 15 °C under ambient and medium temperature and may not exceed 3 °C .  
 The oil content of compressed air must remain constant during the life cycle.  
 Use only the approved oils from AVENTICS. Further information can be found in the "Technical information" document (available in the MediaCentre).

## Technical information

Material	
Housing	Polyoxymethylene
Seals	Acrylonitrile butadiene rubber

Dimensions

Dimensions

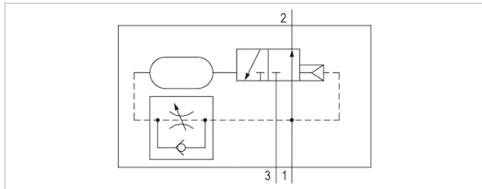


# Signal interrupter

- Qn = 120 l/min
- for 551



Working pressure min./max.	1 ... 10 bar
Ambient temperature min./max.	-20 ... 70 °C
Medium temperature min./max.	-20 ... 70 °C
Medium	Compressed air
Max. particle size	5 µm
Oil content of compressed air	0 ... 1 mg/m³
Weight	0.11 kg



## Technical data

Part No.	Flow
	Qn
5510130000	120 l/min

Nominal flow Qn at 6 bar and Δp = 1 bar

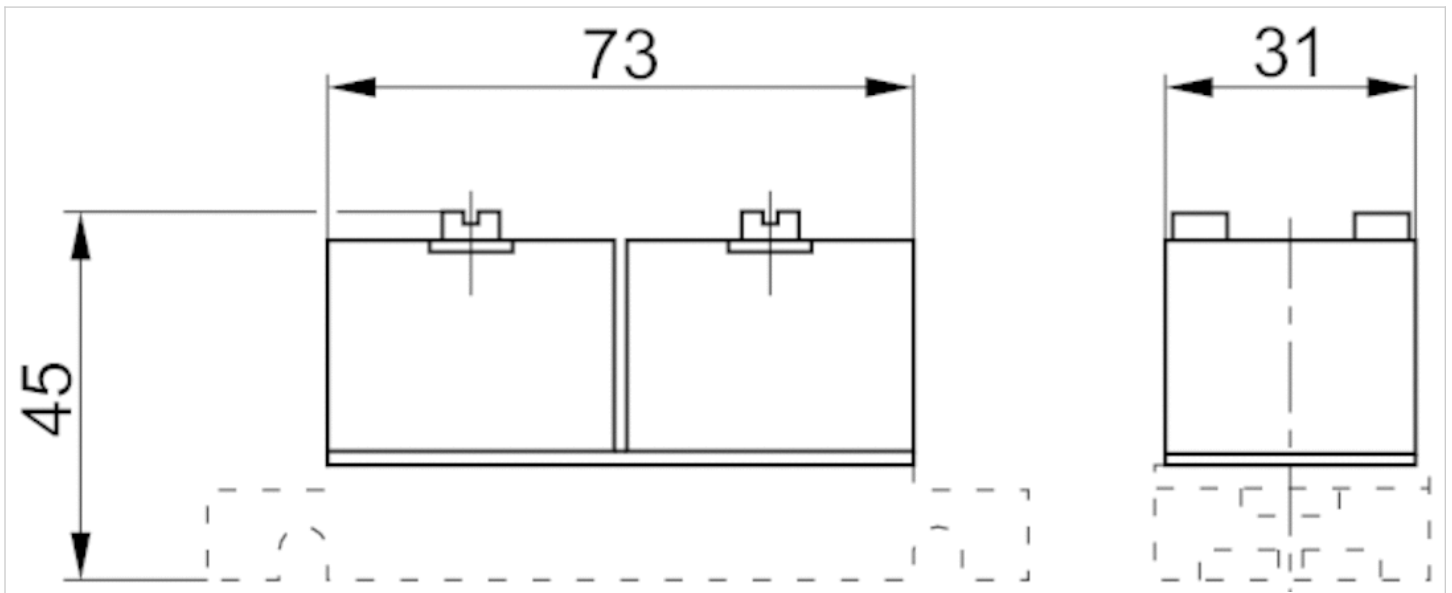
## Technical information

Material	
Housing	Polyoxymethylene
Seals	Acrylonitrile butadiene rubber



## Dimensions

### Dimensions







# Pressure Switches

- adjustable
- Qn = 30-120 l/min
- for 551



Working pressure min./max.	1 ... 10 bar
Control pressure min./max.	0.6 ... 10 bar
Ambient temperature min./max.	-20 ... 70 °C
Medium temperature min./max.	-20 ... 70 °C
Medium	Compressed air
Max. particle size	5 µm
Oil content of compressed air	0 ... 1 mg/m <sup>3</sup>
Weight	See table below

## Technical data

Part No.			Logic function	Flow	Weight	Fig.
				Qn		
5510160000		-	-	30 l/min	0.115 kg	Fig. 1
5510160100		NC	YES	120 l/min	0.165 kg	Fig. 2
5510161100		NO	NOT (NO)	120 l/min	0.165 kg	Fig. 2

Nominal flow Qn at 6 bar and  $\Delta p = 1$  bar

## Technical information

Material	
Housing	Polyoxymethylene
Seals	Acrylonitrile butadiene rubber

## Dimensions

Fig. 1

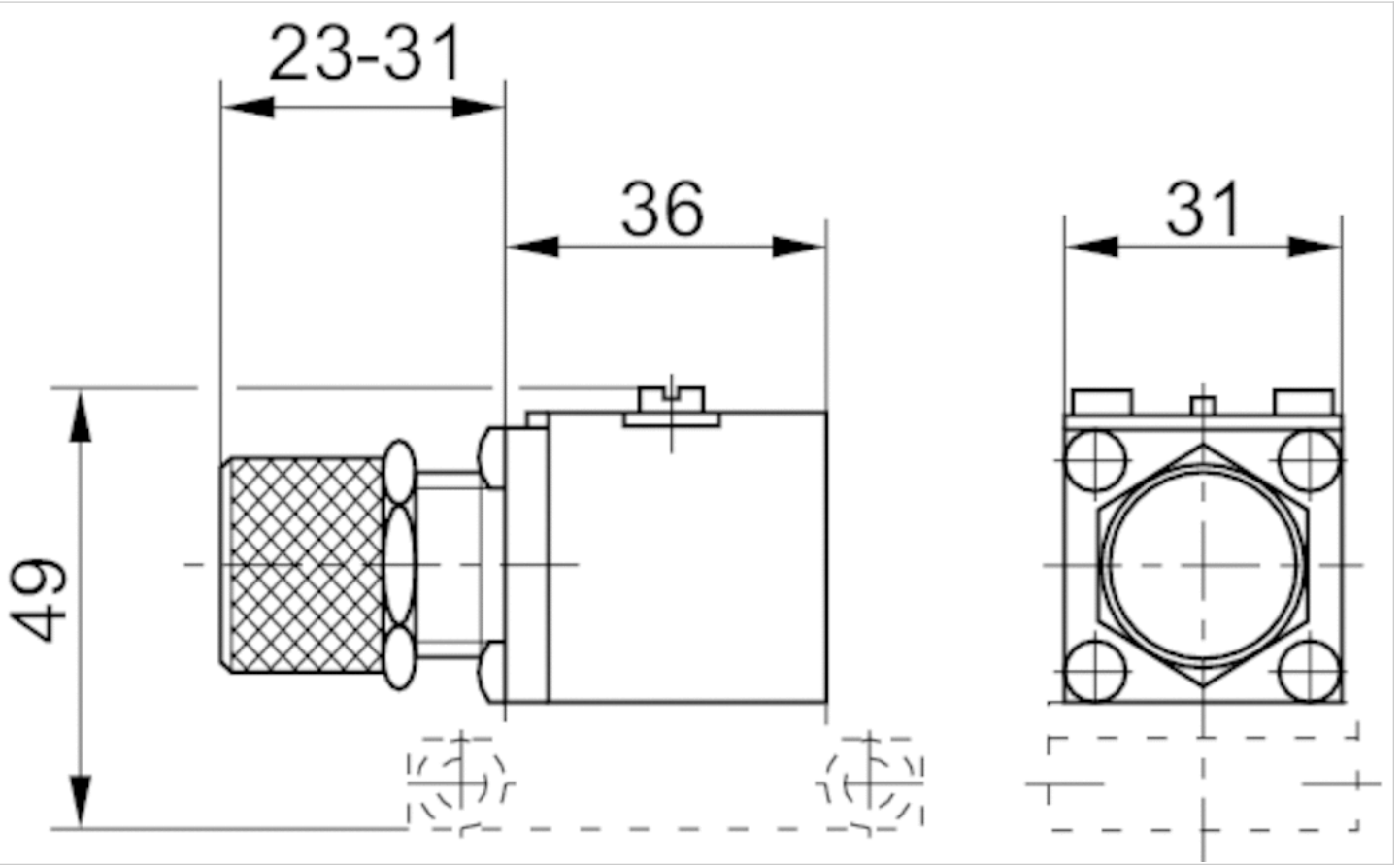
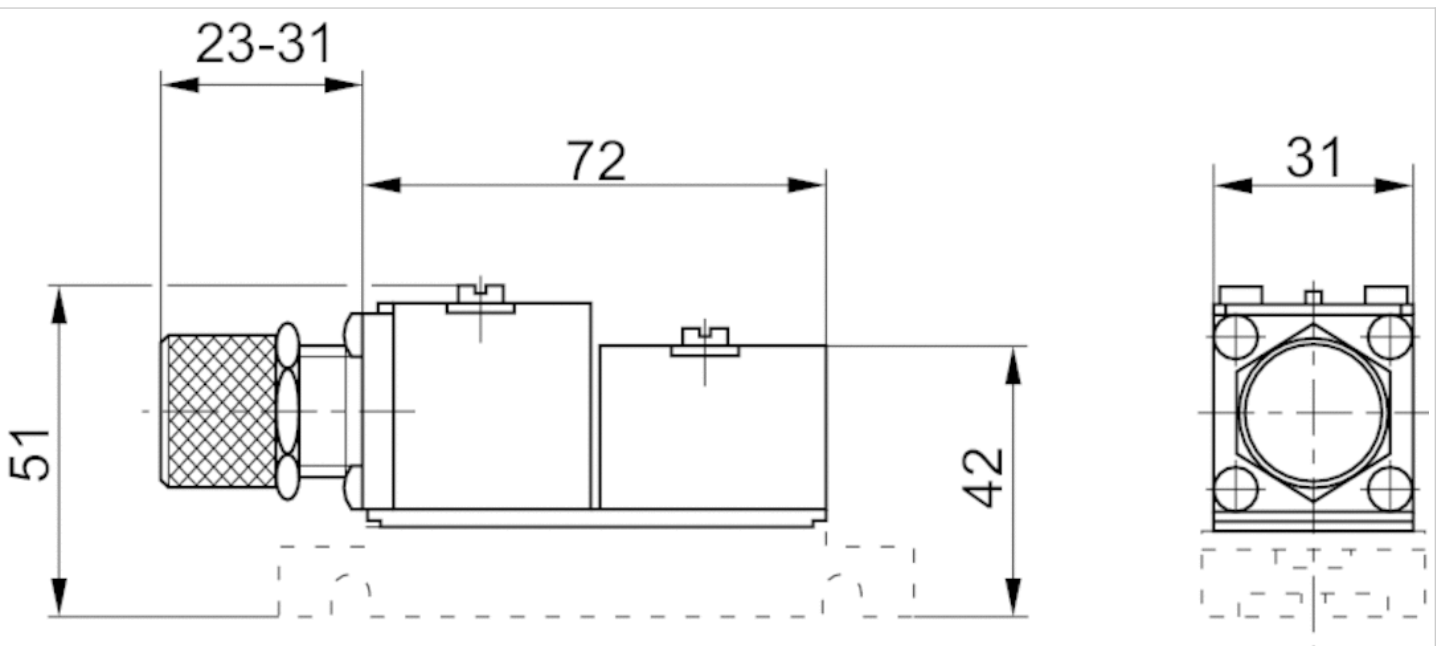


Fig. 2



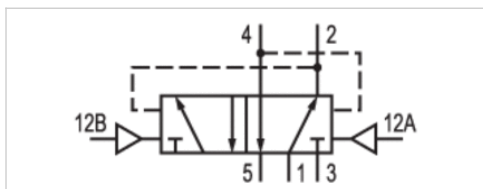
# Counter

- Qn = 120 l/min

- for 551



Control pressure min./max.	2 ... 10 bar
Ambient temperature min./max.	-20 ... 70 °C
Medium temperature min./max.	-20 ... 70 °C
Medium	Compressed air
Max. particle size	5 µm
Oil content of compressed air	0 ... 1 mg/m <sup>3</sup>
Weight	0.13 kg



## Technical data

Part No.	Flow
	Qn
5510240000	120 l/min

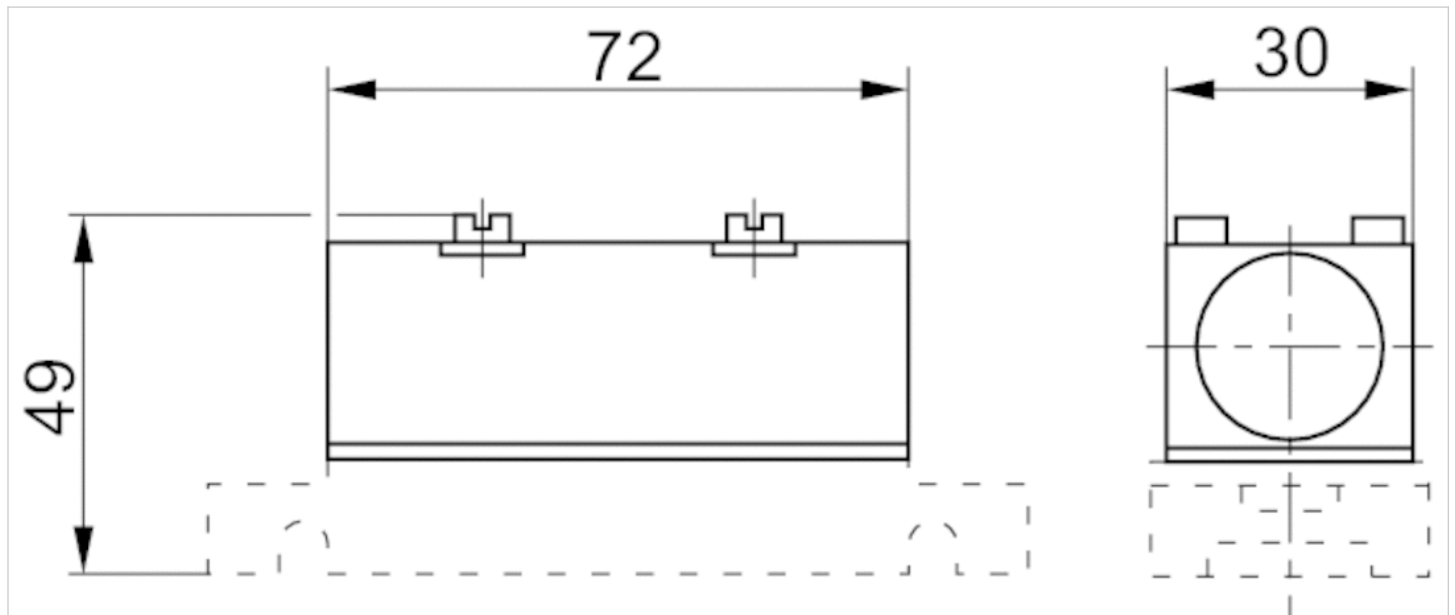
Nominal flow Qn at 6 bar and  $\Delta p = 1$  bar

## Technical information

Material	
Housing	Aluminum
Seals	Acrylonitrile butadiene rubber

## Dimensions

### Dimensions

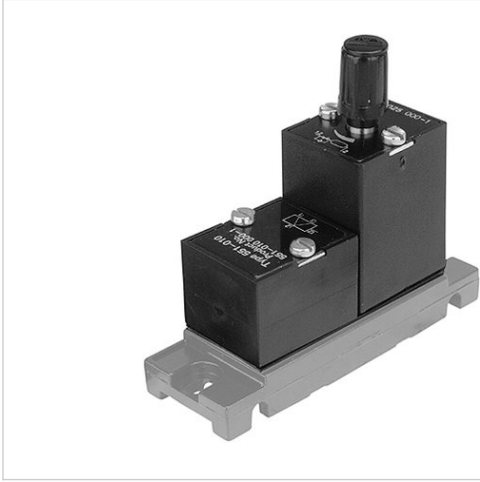


# Pneumatic timer

- for opening or closing delay







- Qn = 120 l/min

- for 551



Working pressure min./max.	See table below
Control pressure min./max.	See table below
Ambient temperature min./max.	-20 ... 70 °C
Medium temperature min./max.	-20 ... 70 °C
Medium	Compressed air
Max. particle size	5 µm
Oil content of compressed air	0 ... 1 mg/m <sup>3</sup>
Time delay	10 s
Weight	See table below

## Technical data

Part No.			Logic function	Flow	Working pressure min./max.	Control pressure min./max.
				Qn		
5510250000		-	-	-	1 ... 10 bar	-
5510250100		NC	YES	120 l/min	1.5 ... 10 bar	1.05 ... 7 bar
5510251100		NO	NOT (NO)	120 l/min	1.5 ... 10 bar	1.05 ... 7 bar
5510260000		-	closing delay	-	1 ... 10 bar	-
5510260100		NC	YES	120 l/min	1.5 ... 10 bar	1.05 ... 7 bar
5510261100		NO	NOT (NO)	120 l/min	1.5 ... 10 bar	1.05 ... 7 bar

Part No.	Throttle	Weight	Fig.
5510250000	with throttle	0.08 kg	Fig. 1
5510250100	with throttle	0.125 kg	Fig. 2
5510251100	with throttle	0.125 kg	Fig. 2
5510260000	with throttle	0.08 kg	Fig. 1
5510260100	with throttle	0.125 kg	Fig. 2
5510261100	with throttle	0.125 kg	Fig. 2

Nominal flow Qn at 6 bar and  $\Delta p = 1$  bar

## Technical information

Material	
Housing	Polyoxymethylene
Seals	Acrylonitrile butadiene rubber

## Dimensions

Fig. 1

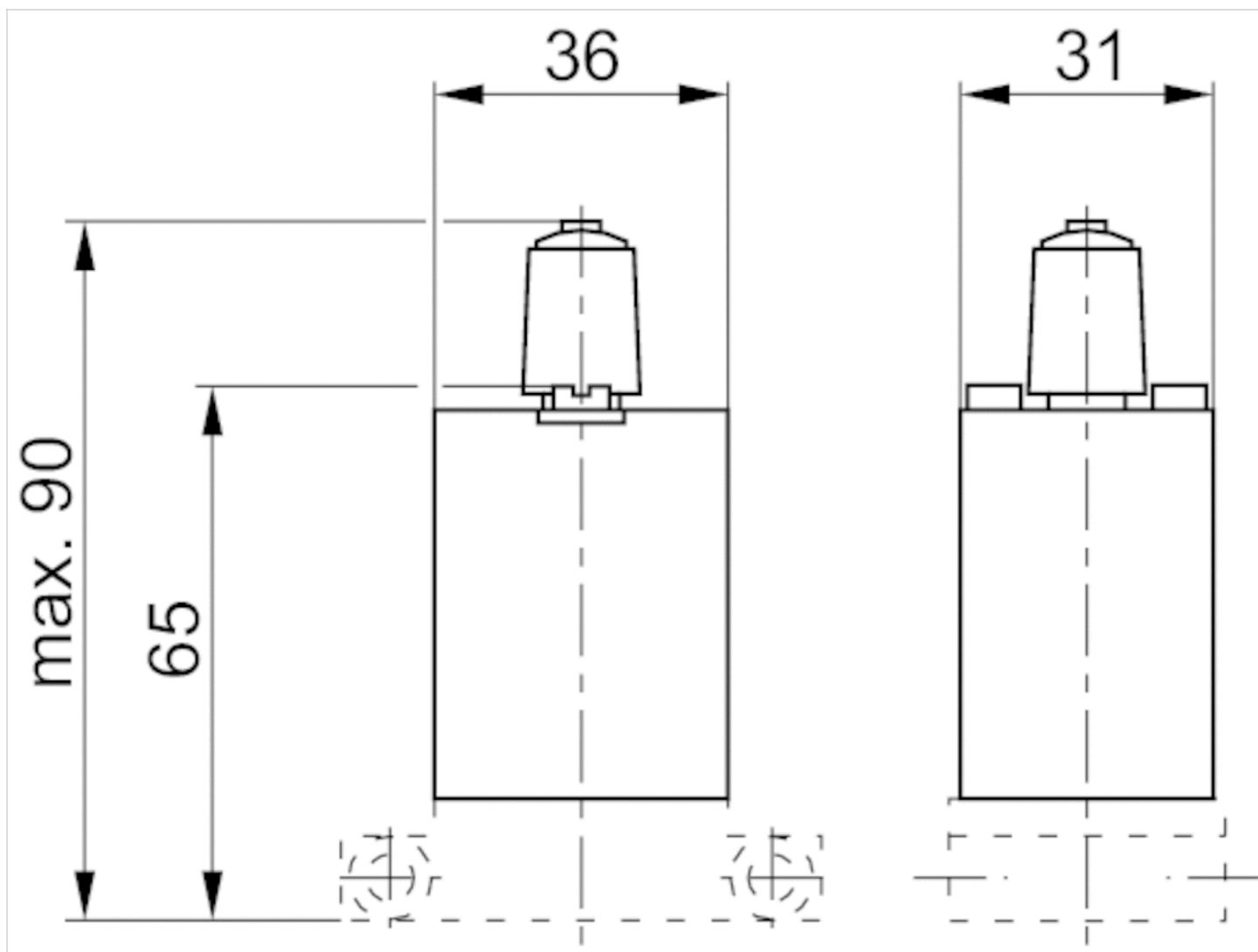
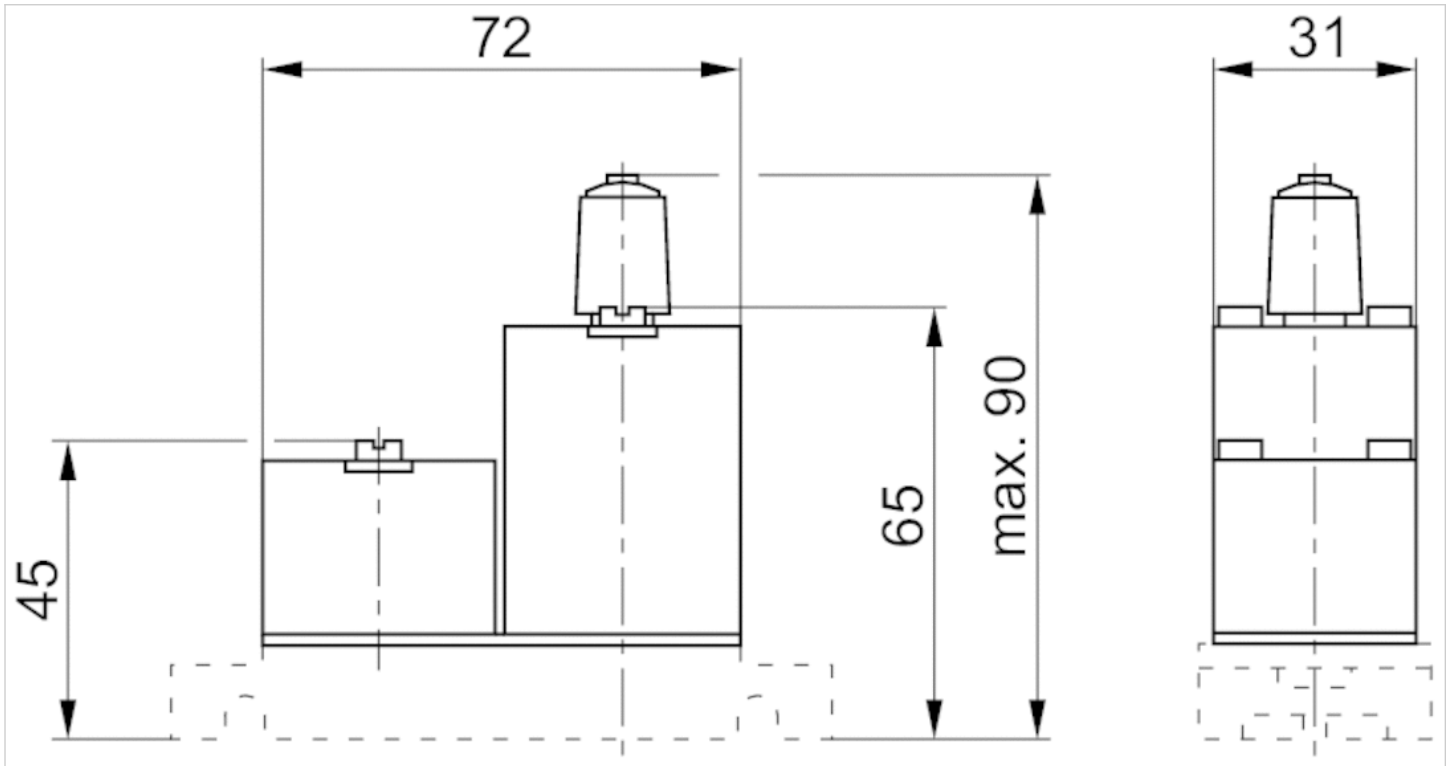


Fig. 2





# Air reservoir

- with indicating pin
- for 551
- Material Polyoxymethylene



Version	Reservoir
Working pressure min./max.	0 ... 10 bar
Ambient temperature min./max.	-20 ... 70 °C
Medium temperature min./max.	-20 ... 70 °C
Medium	Compressed air
Max. particle size	5 µm
Oil content of compressed air	0 ... 1 mg/m <sup>3</sup>
Filter reservoir volume	18 cm <sup>3</sup>
Weight	0.06 kg



## Technical data

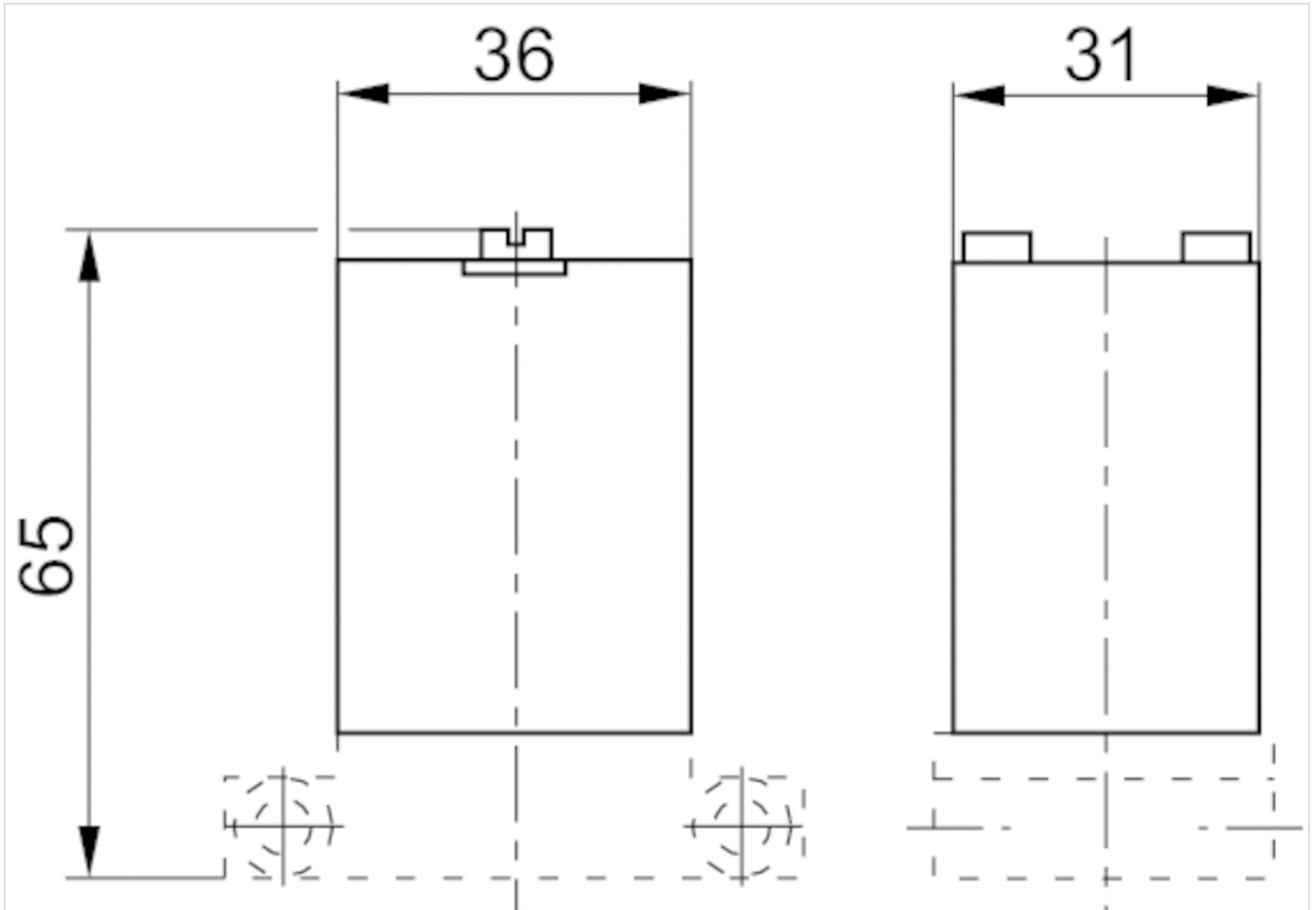
Part No.
5510030000

## Technical information

Material	
Reservoir	Polyoxymethylene
Seal	Acrylonitrile butadiene rubber

Dimensions

Dimensions



# Single subbase

- Compressed air connection output G 1/8 Ø 4
- for 551



Working pressure min./max.	0 ... 10 bar
Ambient temperature min./max.	-20 ... 70 °C
Medium temperature min./max.	-20 ... 70 °C
Medium	Compressed air
Number of valve positions max.	1
Direction of pneumatic port (1)	Down
Direction of pneumatic port (3,5)	Down
Direction of pneumatic port (2,4)	Down
Weight	See table below

## Technical data

Part No.	Compressed air connection Input [1]	Compressed air connection Output [2 / 4]
5515410000	G 1/8	G 1/8
5515610000	Ø 4	Ø 4

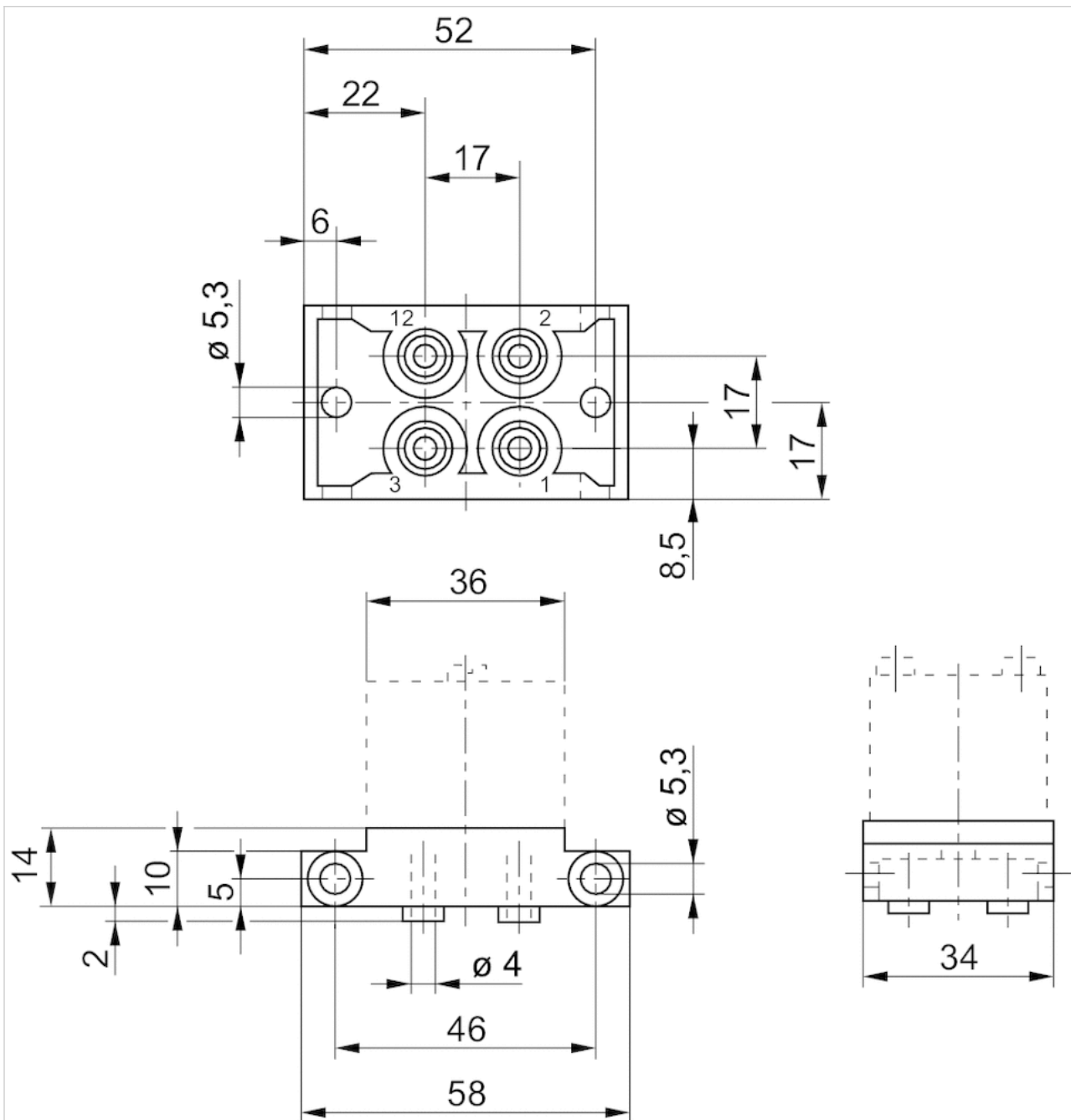
Part No.	Compressed air connection Exhaust [3 / 5]	Weight	Fig.
5515410000	G 1/8	0.037 kg	Fig. 1
5515610000	Ø 4	0.048 kg	Fig. 2

## Technical information

Material	
Base plate	Die-cast aluminum, black painted



Fig. 2



\* alternative valve

# Subbase for two valves

- Compressed air connection output G 1/8 Ø 4

- for 551



Working pressure min./max.	0 ... 10 bar
Ambient temperature min./max.	-20 ... 70 °C
Medium temperature min./max.	-20 ... 70 °C
Medium	Compressed air
Number of valve positions max.	2
Direction of pneumatic port (1)	Down
Direction of pneumatic port (3,5)	Down
Direction of pneumatic port (2,4)	Down
Weight	See table below

## Technical data

Part No.	Compressed air connection Input [1]	Compressed air connection Output [2 / 4]
5514410000	G 1/8	G 1/8
5514610000	Ø 4	Ø 4

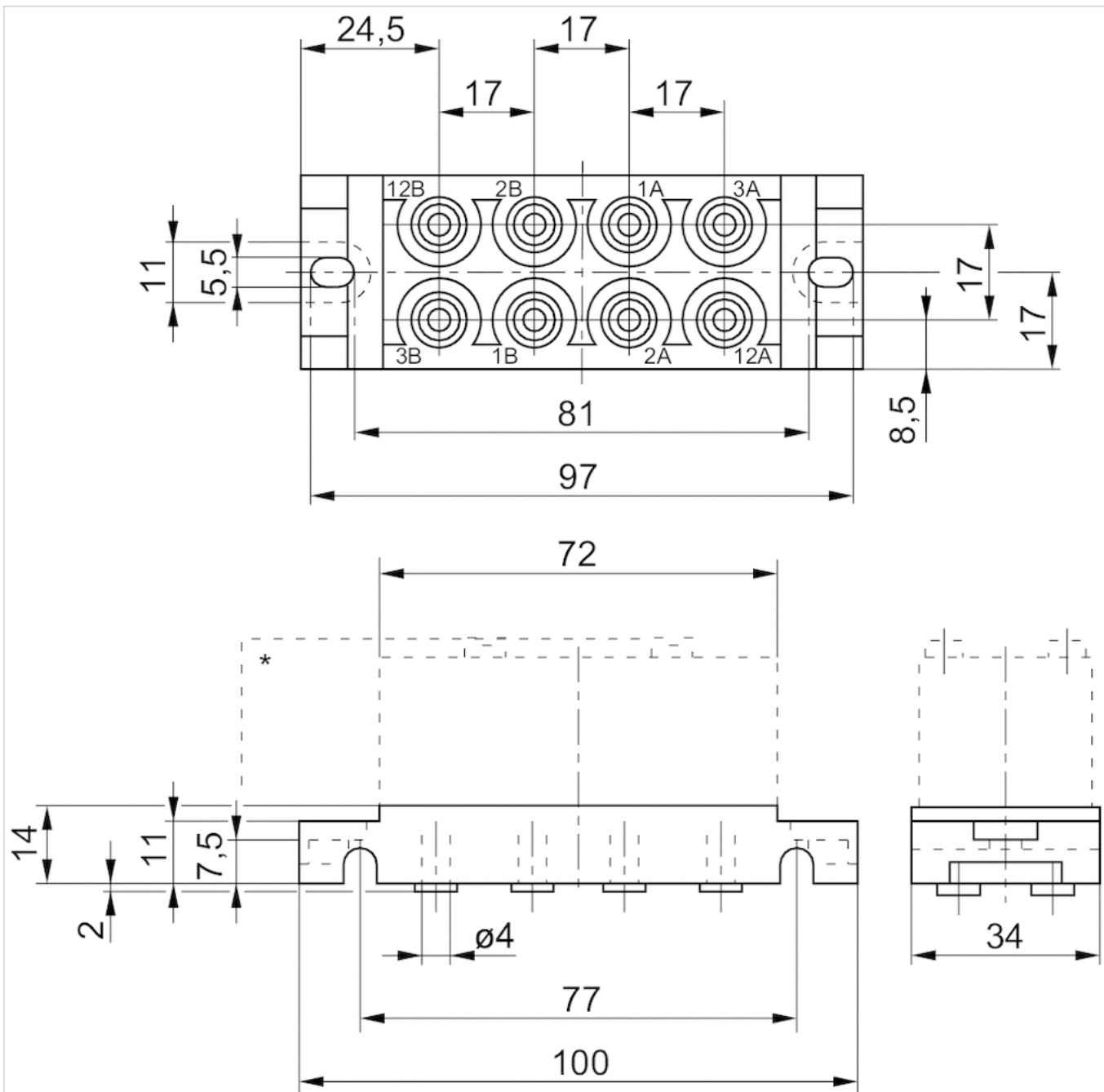
Part No.	Compressed air connection Exhaust [3 / 5]	Weight	Fig.
5514410000	G 1/8	0.072 kg	Fig. 1
5514610000	Ø 4	0.09 kg	Fig. 2

## Technical information

Material	
Base plate	Die-cast aluminum, black painted



Fig. 2



\* alternative valve



# Mounting kit

- for 551



Ambient temperature min./max.	-20 ... 70 °C
Medium temperature min./max.	-20 ... 70 °C
Weight	See table below

## Technical data

Part No.	Number of valve positions	Weight
5514400020	2	0.09 kg
5514400030	3	0.11 kg
5514400040	4	0.13 kg
5514400050	5	0.15 kg
5514400060	6	0.17 kg
5514400070	7	0.19 kg
5514400080	8	0.21 kg
5514400090	9	0.23 kg
5514400100	10	0.25 kg

## Technical information

The min. control pressure must be adhered to, since otherwise faulty switching and valve failure may result!

The pressure dew point must be at least 15 °C under ambient and medium temperature and may not exceed 3 °C .

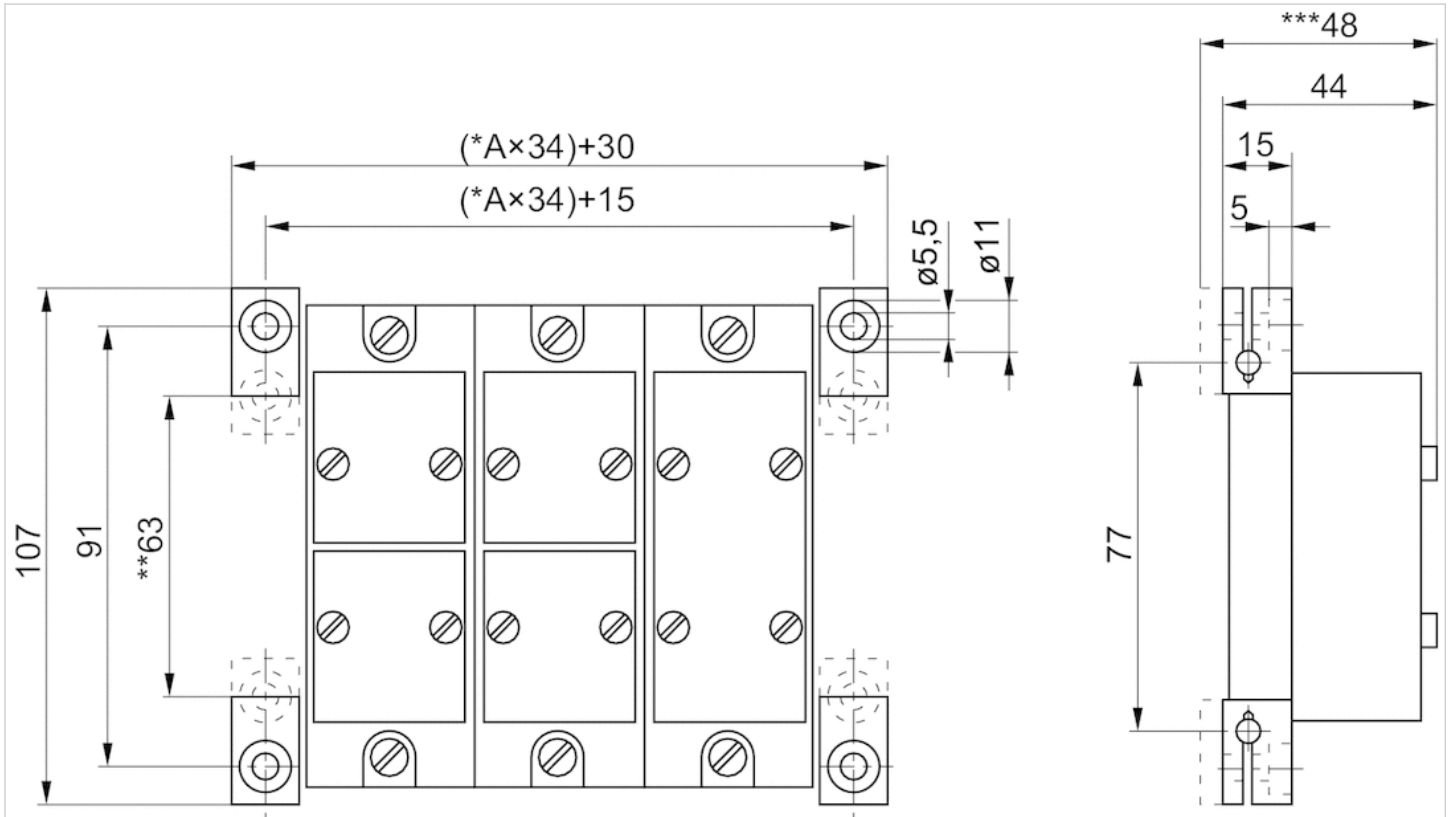
The oil content of compressed air must remain constant during the life cycle.

Use only the approved oils from AVENTICS. Further information can be found in the "Technical information" document (available in the MediaCentre).

## Technical information

Material	
Screws	Steel
Tie-rods	Steel
Mounting bracket	Aluminum

# Dimensions



- \* A = No. of subbases.
- \*\* With the mounting holes turned inwards.
- \*\*\* With the mountings turned 180°.

# Efficient pneumatic solutions, our program: cylinders and drives, valves and valve systems, air supply management



Visit us: [Emerson.com/Aventics](https://www.emerson.com/Aventics)

Your local contact: [Emerson.com/contactus](https://www.emerson.com/contactus)



Emerson.com



[Facebook.com/EmersonAutomationSolutions](https://www.facebook.com/EmersonAutomationSolutions)



[LinkedIn.com/company/Emerson-Automation-Solutions](https://www.linkedin.com/company/Emerson-Automation-Solutions)



[Twitter.com/EMR\\_Automation](https://twitter.com/EMR_Automation)

An example configuration is depicted on the title page. The delivered product may thus vary from that in the illustration. Subject to change. This Document, as well as the data, specifications and other information set forth in it, are the exclusive property of AVENTICS GmbH. It may not be reproduced or given to third parties without its consent. Only use the AVENTICS products shown in industrial applications. Read the product documentation completely and carefully before using the product. Observe the applicable regulations and laws of the respective country. When integrating the product into applications, note the system manufacturer's specifications for safe use of the product. The data specified only serve to describe the product. No statements concerning a certain condition or suitability for a certain application can be derived from our information. The information given does not release the user from the obligation of own judgment and verification. It must be remembered that the products are subject to a natural process of wear and aging.

The Emerson logo is a trademark and service mark of Emerson Electric Co. Brand logotype are registered trademarks of one of the Emerson family of companies. All other marks are the property of their respective owners. © 2017 Emerson Electric Co. All rights reserved.  
2019-03



## CONSIDER IT SOLVED™