

Series 521

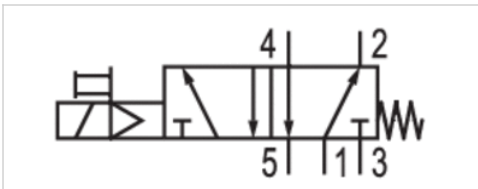


AVENTICS™ Series 521



5/2-directional valve, Series 521

- 5/2
- Qn = 1050 l/min
- Pilot valve width : 22 mm
- Pipe connection
- Compressed air connection output : G 1/4
- Electrical connection : Plug, EN 175301-803, form C
- Manual override : without detent
- single solenoid
- With spring return
- Pilot : Internal



Type	Spool valve
Activation	Electrically
Pilot	Internal
Sealing principle	Soft sealing
Working pressure min./max.	1.5 ... 8 bar
Control pressure min./max.	1.5 ... 8 bar
Ambient temperature min./max.	5 ... 50 °C
Medium	Compressed air
Max. particle size	5 µm
Oil content of compressed air	0 ... 5 mg/m ³
Nominal flow Qn	1050 l/min
Connector standard	EN 175301-803
Protection class with connection	IP65
Duty cycle	100 %
Typ. switch-on time	20 ms
Typ. switch-off time	50 ms
mounting screws	M4
Weight	0.155 kg

Technical data

Part No.	Compressed air connection		Operational voltage
	Input	Output	
52100401	G 1/4	G 1/4	DC 24 V

Part No.	Power consumption
	DC
52100401	1.6 W

Technical information

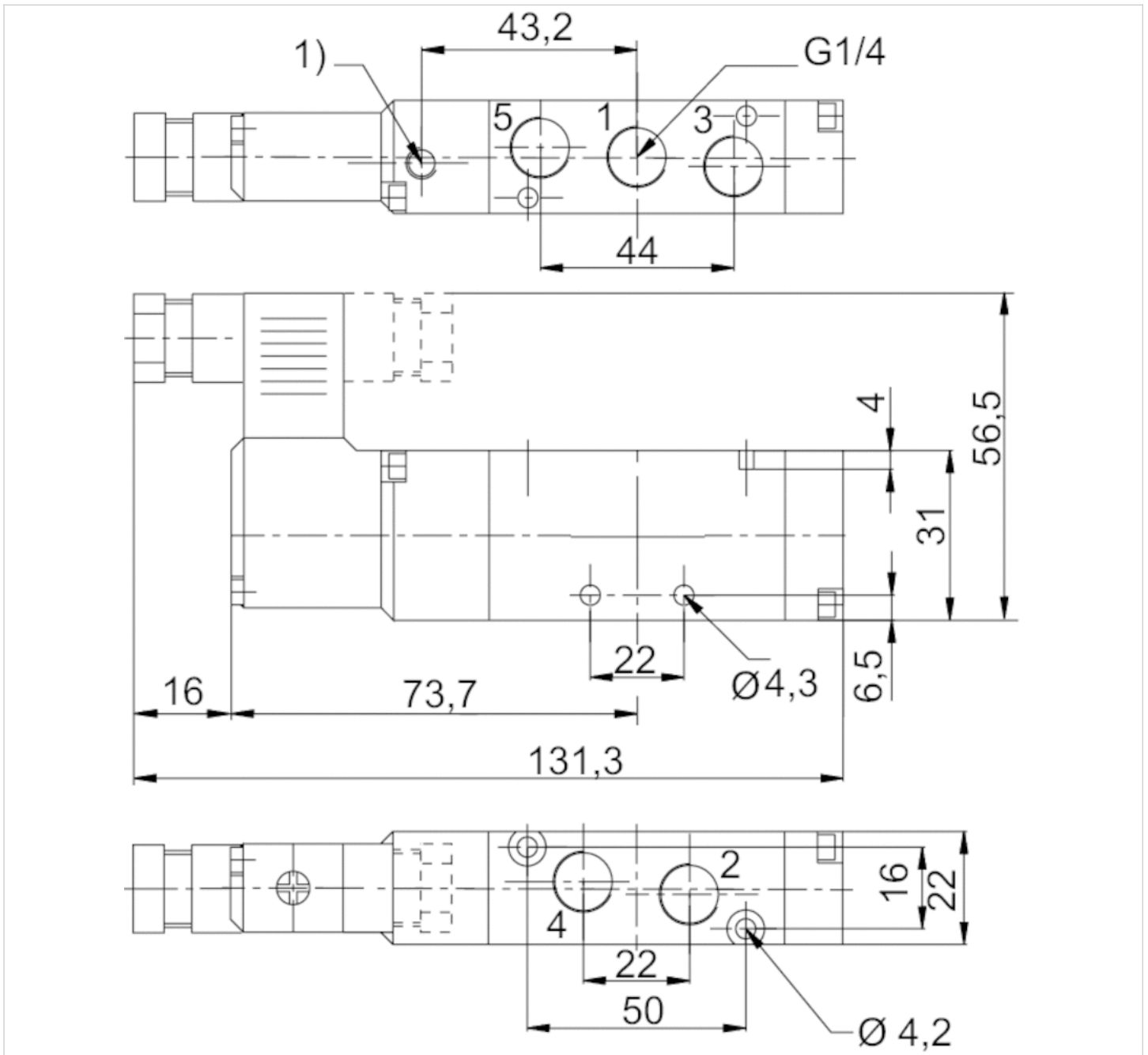
The min. control pressure must be adhered to, since otherwise faulty switching and valve failure may result!
 The pressure dew point must be at least 15 °C under ambient and medium temperature and may not exceed 3 °C .
 The oil content of compressed air must remain constant during the life cycle.
 Use only the approved oils from AVENTICS. Further information can be found in the "Technical information" document (available in the MediaCentre).

Technical information

Material	
Housing	Aluminum, anodized
Seals	Nitrile butadiene rubber
Front plate	Polyoxymethylene
Threaded bushing	Aluminum

Dimensions

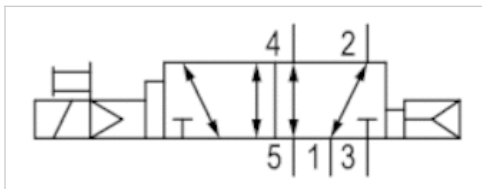
Dimensions



1) Pilot Exhaust

5/2-directional valve, Series 521

- 5/2
- Qn = 1050 l/min
- Pilot valve width : 22 mm
- Pipe connection
- Compressed air connection output : G 1/4
- Electrical connection : Plug, EN 175301-803, form C
- Manual override : without detent
- single solenoid
- Air return with differential piston
- Pilot : Internal



Type	Spool valve
Activation	Electrically
Pilot	Internal
Sealing principle	Soft sealing
Working pressure min./max.	1.5 ... 8 bar
Control pressure min./max.	1.5 ... 8 bar
Ambient temperature min./max.	5 ... 50 °C
Medium	Compressed air
Max. particle size	5 µm
Oil content of compressed air	0 ... 5 mg/m³
Nominal flow Qn	1050 l/min
Connector standard	EN 175301-803
Protection class with connection	IP65
Duty cycle	100 %
Typ. switch-on time	20 ms
Typ. switch-off time	50 ms
mounting screws	M4
Weight	0.155 kg

Technical data

Part No.	Compressed air connection		Operational voltage
	Input	Output	
52100002	G 1/4	G 1/4	-
52100003	G 1/4	G 1/4	-
52100004	G 1/4	G 1/4	-
52100001	G 1/4	G 1/4	24 V

Part No.	Operational voltage	Power consumption	
		DC	AC 50 Hz
52100002	24 V	-	2 VA
52100003	110 V	-	2 VA
52100004	230 V	-	2 VA
52100001	-	1.6 W	-

Technical information

The min. control pressure must be adhered to, since otherwise faulty switching and valve failure may result!

The pressure dew point must be at least 15 °C under ambient and medium temperature and may not exceed 3 °C .

The oil content of compressed air must remain constant during the life cycle.

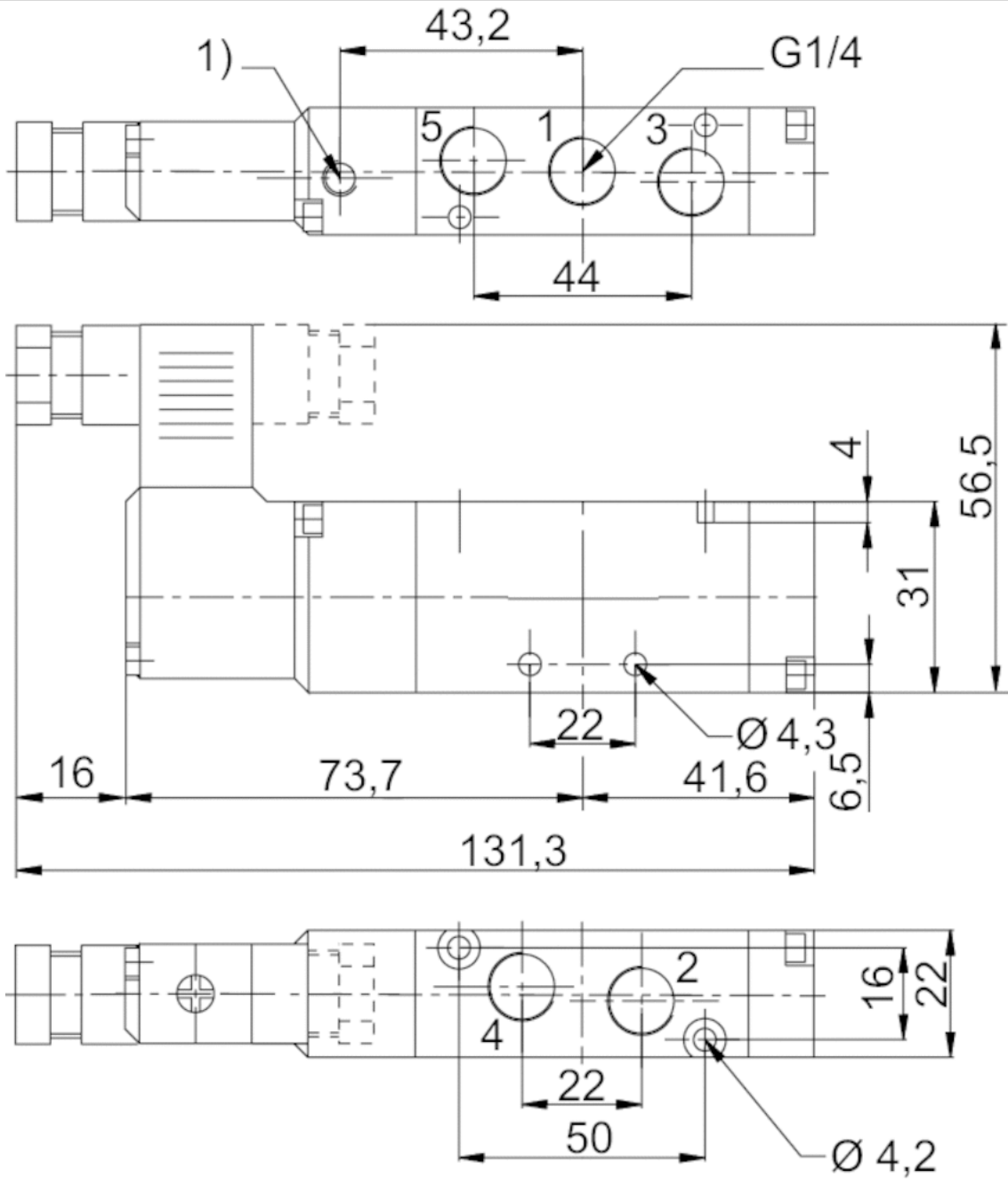
Use only the approved oils from AVENTICS. Further information can be found in the "Technical information" document (available in the MediaCentre).

Technical information

Material	
Housing	Aluminum, anodized
Seals	Nitrile butadiene rubber
Front plate	Polyoxymethylene
Threaded bushing	Aluminum

Dimensions

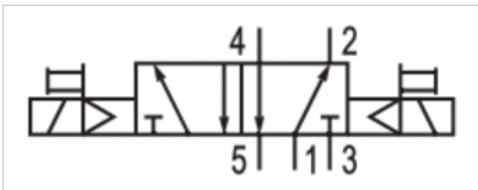
Dimensions



1) Pilot Exhaust

5/2-directional valve, Series 521

- 5/2
- Qn = 1050 l/min
- Pilot valve width : 22 mm
- Pipe connection
- Compressed air connection output : G 1/4
- Electrical connection : Plug, EN 175301-803, form C
- Manual override : without detent
- double solenoid
- Pilot : Internal



Type	Spool valve
Activation	Electrically
Pilot	Internal
Sealing principle	Soft sealing
Working pressure min./max.	1.5 ... 8 bar
Control pressure min./max.	1.5 ... 8 bar
Ambient temperature min./max.	5 ... 50 °C
Medium	Compressed air
Max. particle size	5 µm
Oil content of compressed air	0 ... 5 mg/m ³
Nominal flow Qn	1050 l/min
Connector standard	EN 175301-803
Protection class with connection	IP65
Duty cycle	100 %
Typ. switch-on time	20 ms
mounting screws	M4
Weight	0.2 kg

Technical data

Part No.	Compressed air connection		Operational voltage
	Input	Output	
52100006	G 1/4	G 1/4	-
52100007	G 1/4	G 1/4	-
52100008	G 1/4	G 1/4	-
52100005	G 1/4	G 1/4	24 V

Part No.	Operational voltage	Power consumption	
		DC	AC 50 Hz
52100006	24 V	-	2 VA
52100007	110 V	-	2 VA
52100008	230 V	-	2 VA
52100005	-	1.6 W	-

Technical information

The min. control pressure must be adhered to, since otherwise faulty switching and valve failure may result!

The pressure dew point must be at least 15 °C under ambient and medium temperature and may not exceed 3 °C .

The oil content of compressed air must remain constant during the life cycle.

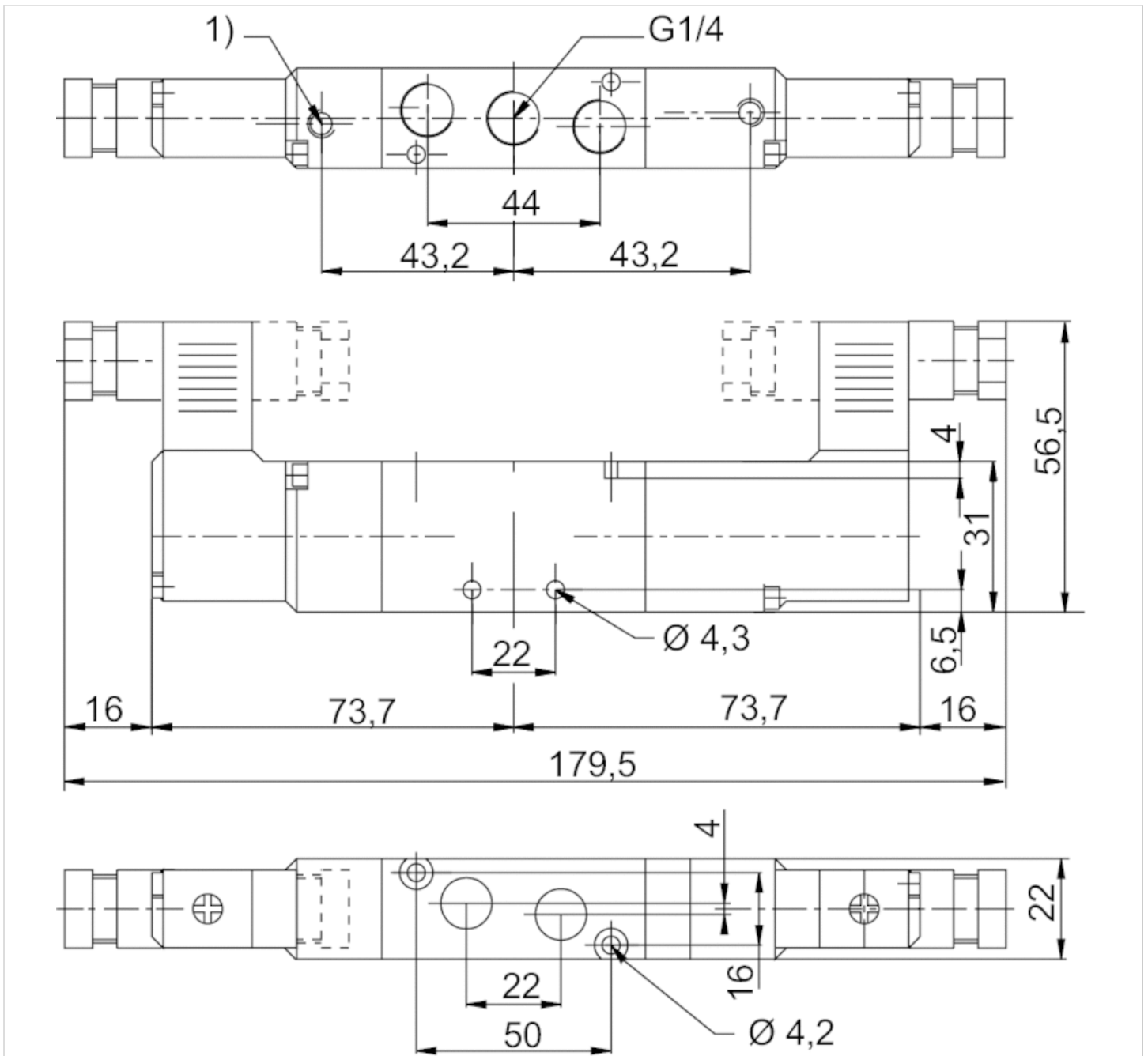
Use only the approved oils from AVENTICS. Further information can be found in the "Technical information" document (available in the MediaCentre).

Technical information

Material	
Housing	Aluminum, anodized
Seals	Nitrile butadiene rubber
Front plate	Polyoxymethylene
Threaded bushing	Aluminum

Dimensions

Dimensions



1) Pilot Exhaust

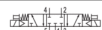

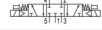
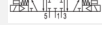
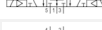
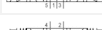
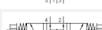
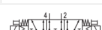
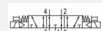
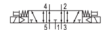
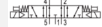


5/3-directional valve, Series 521

- 5/3
- Qn = 1050 l/min
- Pilot valve width : 22 mm
- closed center pressurized center exhausted center
- Pipe connection
- Compressed air connection output : G 1/4
- Electrical connection : Plug, EN 175301-803, form C
- Manual override : without detent
- Pilot : Internal



Type	Spool valve
Activation	Electrically
Pilot	Internal
Sealing principle	Soft sealing
Working pressure min./max.	1.5 ... 8 bar
Control pressure min./max.	1.5 ... 8 bar
Ambient temperature min./max.	5 ... 50 °C
Medium	Compressed air
Max. particle size	5 µm
Oil content of compressed air	0 ... 5 mg/m³
Nominal flow Qn	1050 l/min
Connector standard	EN 175301-803
Protection class with connection	IP65
Duty cycle	100 %
Typ. switch-on time	20 ms
Typ. switch-off time	50 ms
mounting screws	M4
Weight	0.21 kg

Technical data

Part No.		closed center	Compressed air connection	
				Input
52100010		closed center		G 1/4
52100011		closed center		G 1/4
52100012		closed center		G 1/4
52100009		closed center		G 1/4
52100126		pressurized center		G 1/4
52100127		pressurized center		G 1/4
52100128		pressurized center		G 1/4
52100129		pressurized center		G 1/4
52100087		exhausted center		G 1/4
52100088		exhausted center		G 1/4
52100089		exhausted center		G 1/4
52100090		exhausted center		G 1/4

Part No.	Compressed air connection		Operational voltage	Operational voltage
		Output		
			DC	AC 50 Hz

Part No.	Compressed air connection	Operational voltage	Operational voltage
	Output	DC	AC 50 Hz
52100010	G 1/4	-	24 V
52100011	G 1/4	-	110 V
52100012	G 1/4	-	230 V
52100009	G 1/4	24 V	-
52100126	G 1/4	-	24 V
52100127	G 1/4	-	110 V
52100128	G 1/4	-	230 V
52100129	G 1/4	24 V	-
52100087	G 1/4	-	24 V
52100088	G 1/4	-	110 V
52100089	G 1/4	-	230 V
52100090	G 1/4	24 V	-

Part No.	Power consumption	Switch-on power
	DC	AC 50 Hz
52100010	-	2 VA
52100011	-	2 VA
52100012	-	2 VA
52100009	1.6 W	-
52100126	-	2 VA
52100127	-	2 VA
52100128	-	2 VA
52100129	1.6 W	-
52100087	-	2 VA
52100088	-	2 VA
52100089	-	2 VA
52100090	1.6 W	-

Technical information

The min. control pressure must be adhered to, since otherwise faulty switching and valve failure may result!

The pressure dew point must be at least 15 °C under ambient and medium temperature and may not exceed 3 °C .

The oil content of compressed air must remain constant during the life cycle.

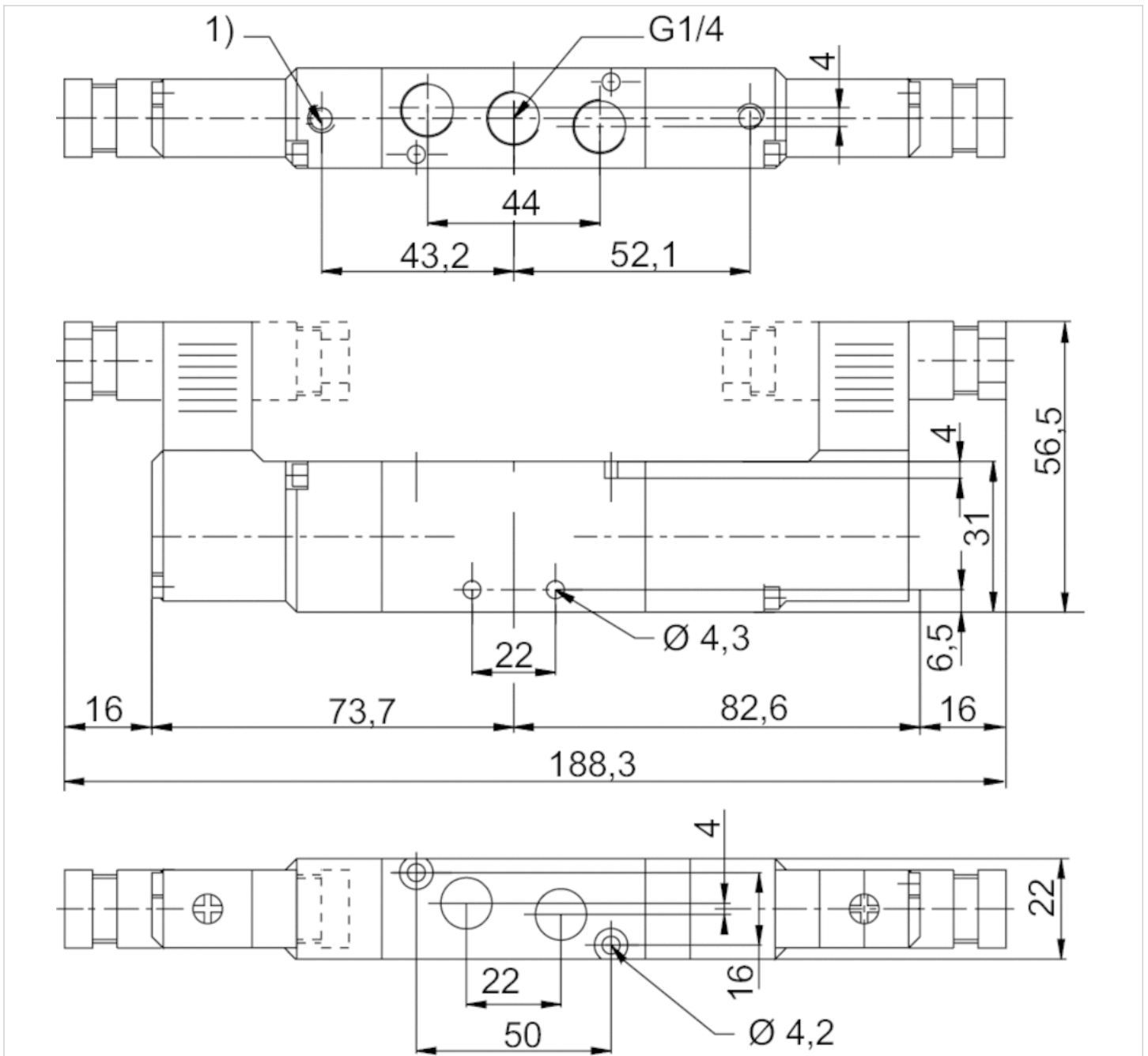
Use only the approved oils from AVENTICS. Further information can be found in the "Technical information" document (available in the MediaCentre).

Technical information

Material	
Housing	Aluminum, anodized
Seals	Nitrile butadiene rubber
Front plate	Polyoxymethylene
Threaded bushing	Aluminum

Dimensions

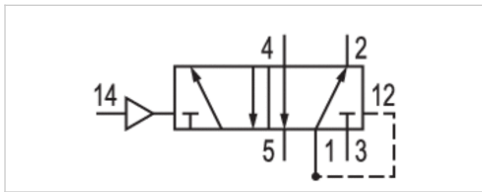
Dimensions



1) Pilot Exhaust

5/2-directional valve, Series 521

- Qn = 1050 l/min
- Compressed air connection output G 1/4
- With differential piston
- Pipe connection



Type	Spool valve
Activation	pneumatically
Pilot	External
Sealing principle	Soft sealing
Flow rate value Qn	1050 l/min
Working pressure min./max.	1.5 ... 8 bar
Control pressure min./max.	1.5 ... 8 bar
Ambient temperature min./max.	5 ... 50 °C
Medium	Compressed air
Max. particle size	5 µm
Oil content of compressed air	0 ... 5 mg/m ³
Mounting screw	M3
Weight	0.11 kg

Technical data

Part No.	Compressed air connection	
	Input	Output
52100077	G 1/4	G 1/4

Technical information

The min. control pressure must be adhered to, since otherwise faulty switching and valve failure may result!

The pressure dew point must be at least 15 °C under ambient and medium temperature and may not exceed 3 °C .

The oil content of compressed air must remain constant during the life cycle.

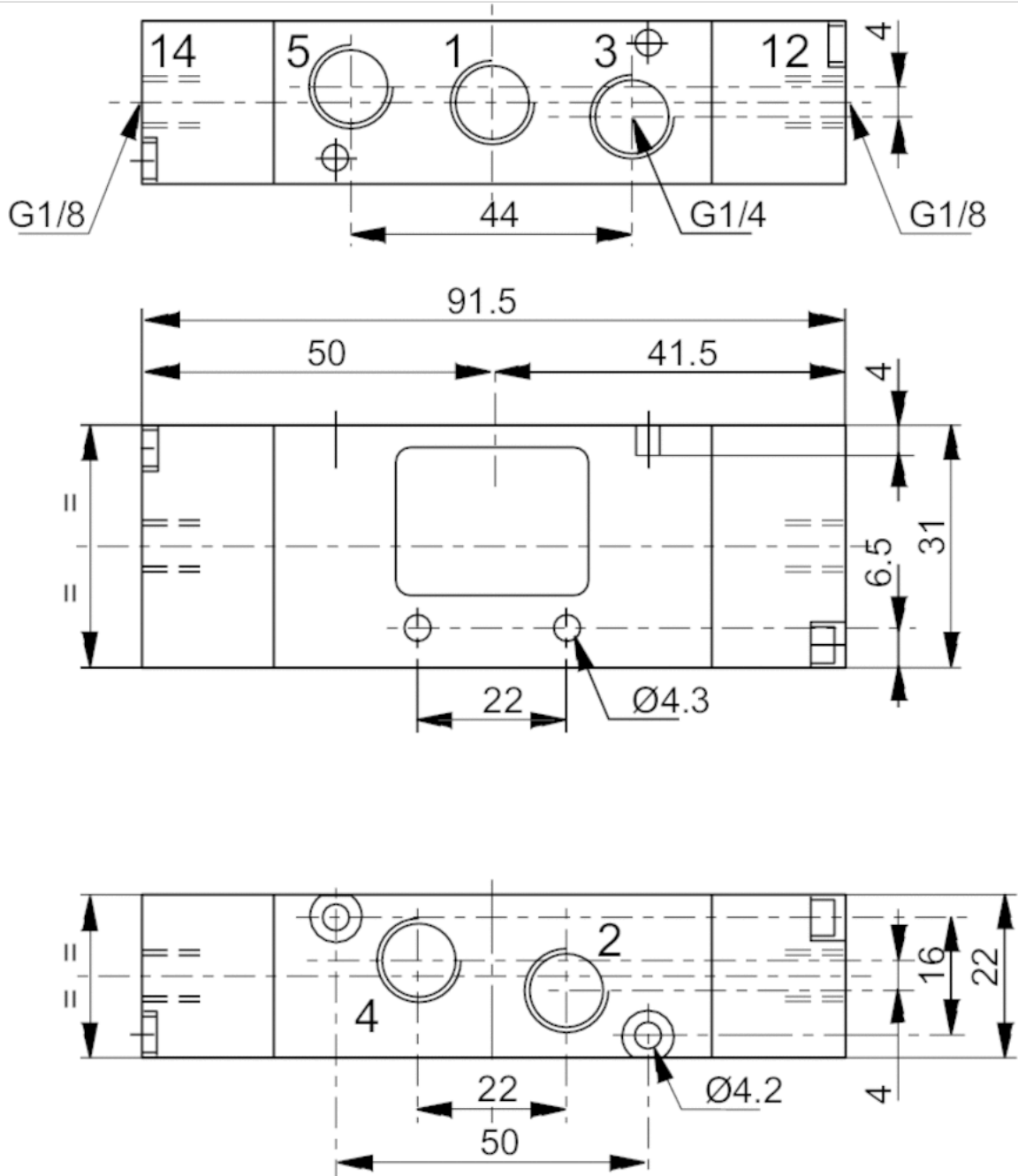
Use only the approved oils from AVENTICS. Further information can be found in the "Technical information" document (available in the MediaCentre).

Technical information

Material	
Housing	Aluminum, anodized
Seals	Nitrile butadiene rubber
Front plate	Polyoxymethylene
Threaded bushing	Aluminum

Dimensions

Dimensions

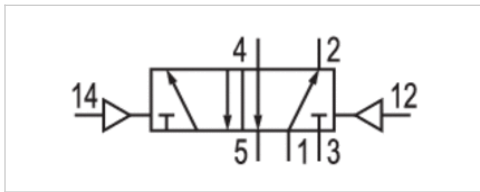


5/2-directional valve, Series 521

- Qn = 1050 l/min
- Compressed air connection output G 1/4
- double air pilot
- Pipe connection



Type	Spool valve
Activation	pneumatically
Pilot	External
Sealing principle	Soft sealing
Flow rate value Qn	1050 l/min
Working pressure min./max.	0 ... 8 bar
Control pressure min./max.	1.5 ... 8 bar
Ambient temperature min./max.	5 ... 50 °C
Medium	Compressed air
Max. particle size	5 µm
Oil content of compressed air	0 ... 5 mg/m ³
Mounting screw	M3
Weight	0.11 kg



Technical data

Part No.	Compressed air connection	
	Input	Output
52100078	G 1/4	G 1/4

Technical information

The min. control pressure must be adhered to, since otherwise faulty switching and valve failure may result!

The pressure dew point must be at least 15 °C under ambient and medium temperature and may not exceed 3 °C .

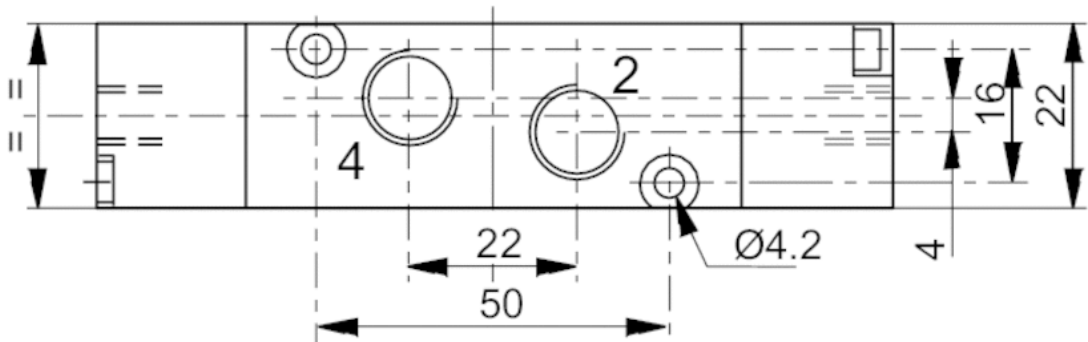
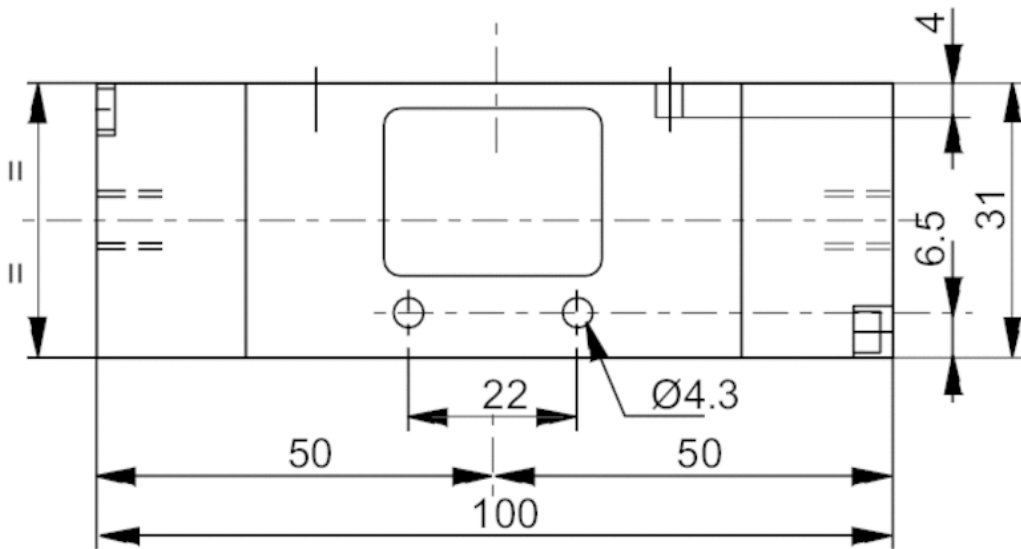
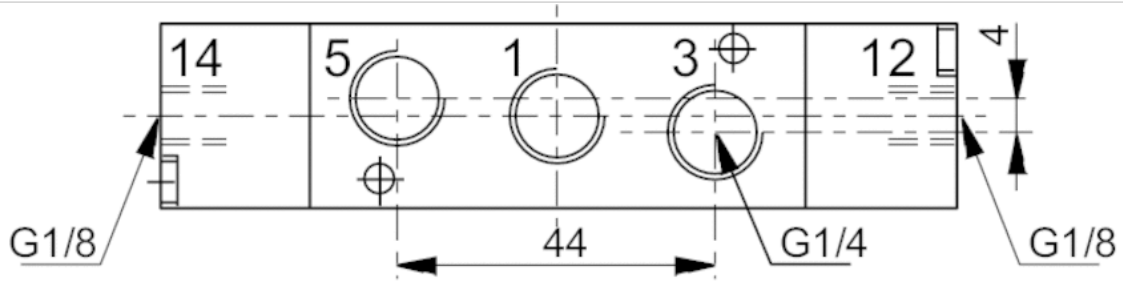
The oil content of compressed air must remain constant during the life cycle.

Use only the approved oils from AVENTICS. Further information can be found in the "Technical information" document (available in the MediaCentre).

Technical information

Material	
Housing	Aluminum, anodized
Seals	Nitrile butadiene rubber
Front plate	Polyoxymethylene
Threaded bushing	Aluminum

Dimensions






5/3-directional valve, Series 521

- Qn = 1050 l/min
- Compressed air connection output G 1/4
- Pipe connection



Type	Spool valve
Activation	pneumatically
Pilot	External
Sealing principle	Soft sealing
Flow rate value Qn	1050 l/min
Working pressure min./max.	0 ... 8 bar
Control pressure min./max.	1.5 ... 8 bar
Ambient temperature min./max.	5 ... 50 °C
Medium	Compressed air
Max. particle size	5 µm
Oil content of compressed air	0 ... 5 mg/m ³
Mounting screw	M4
Weight	0.12 kg

Technical data

Part No.			Compressed air connection
			Input
52100079		closed center	G 1/4
52100142		pressurized center	G 1/4
52100082		exhausted center	G 1/4

Part No.	Compressed air connection
	Output
52100079	G 1/4
52100142	G 1/4
52100082	G 1/4

Technical information

The min. control pressure must be adhered to, since otherwise faulty switching and valve failure may result!

The pressure dew point must be at least 15 °C under ambient and medium temperature and may not exceed 3 °C .

The oil content of compressed air must remain constant during the life cycle.

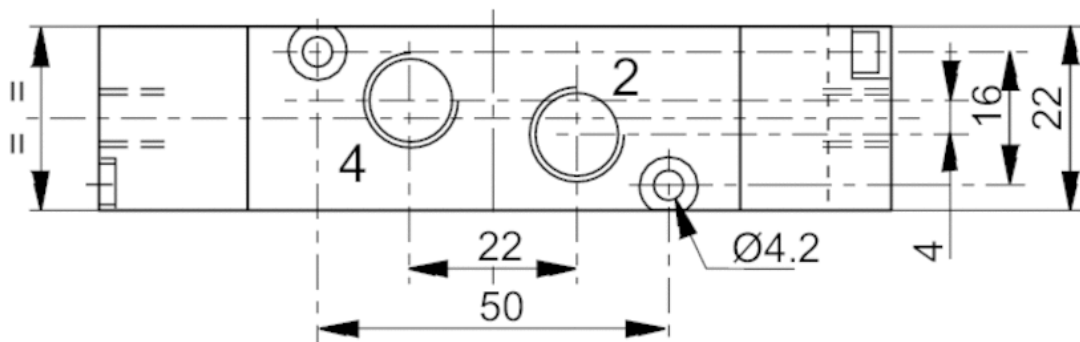
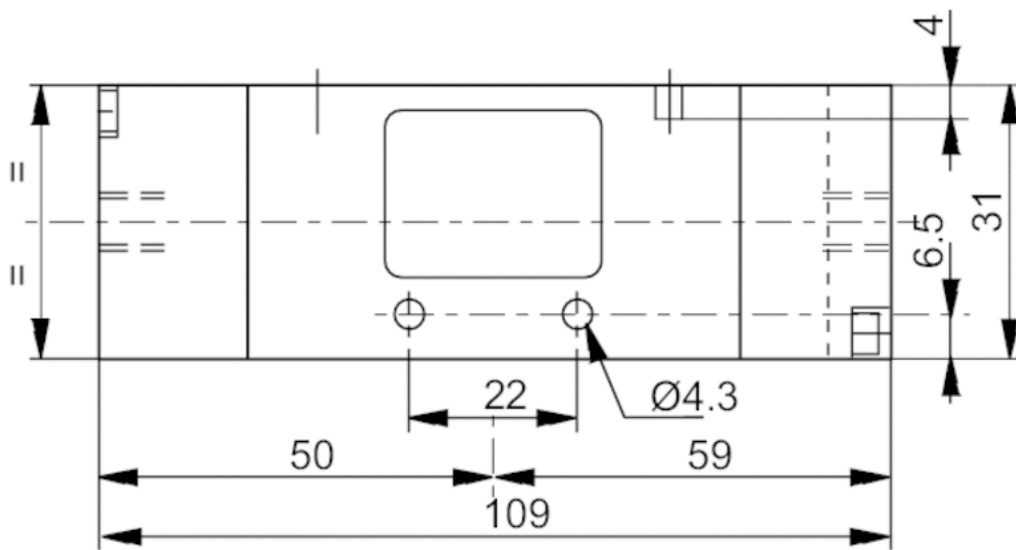
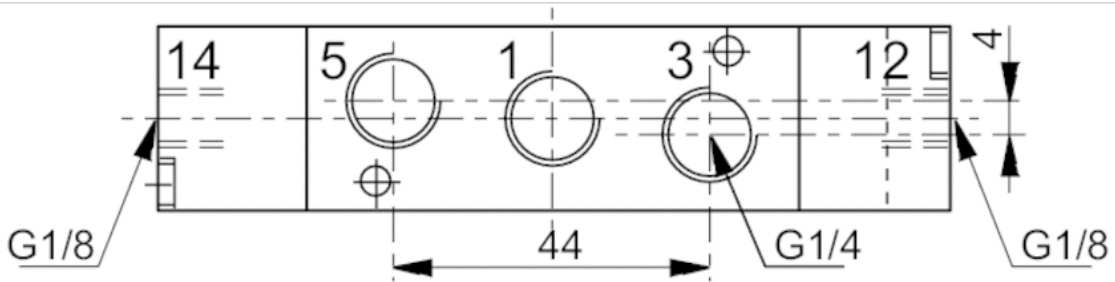
Use only the approved oils from AVENTICS. Further information can be found in the "Technical information" document (available in the MediaCentre).

Technical information

Material	
Housing	Aluminum, anodized
Seals	Nitrile butadiene rubber
Front plate	Polyoxymethylene
Threaded bushing	Aluminum

Dimensions

Dimensions



Series 355

- for 521



Weight

See table below

Technical data

Part No.	Suitable for Series	Port	Number of valve positions	Weight
35500342	aluminum base plates	G 1/4	2	0.3 kg
35500343	aluminum base plates	G 1/4	3	0.39 kg
35500344	aluminum base plates	G 1/4	4	0.485 kg
35500345	aluminum base plates	G 1/4	5	0.575 kg
35500346	aluminum base plates	G 1/4	6	0.67 kg
35500347	aluminum base plates	G 1/4	7	0.76 kg
35500348	aluminum base plates	G 1/4	8	0.855 kg
35500349	aluminum base plates	G 1/4	9	0.945 kg
35500350	aluminum base plates	G 1/4	10	1.04 kg

Technical information

The min. control pressure must be adhered to, since otherwise faulty switching and valve failure may result!

The pressure dew point must be at least 15 °C under ambient and medium temperature and may not exceed 3 °C .

The oil content of compressed air must remain constant during the life cycle.

Use only the approved oils from AVENTICS. Further information can be found in the "Technical information" document (available in the MediaCentre).

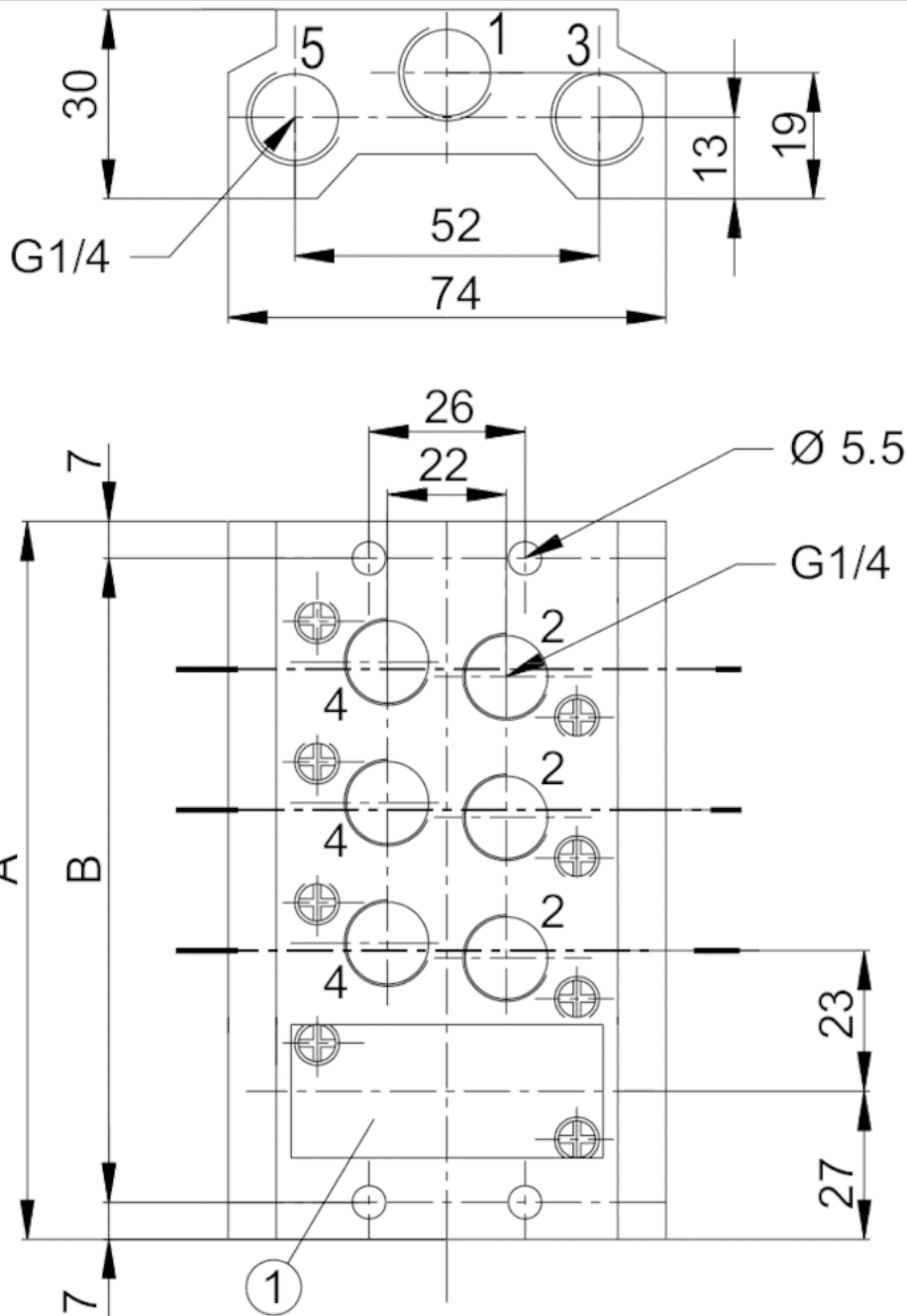
Technical information

Material

Base plate	Aluminum
------------	----------

Dimensions

Dimensions



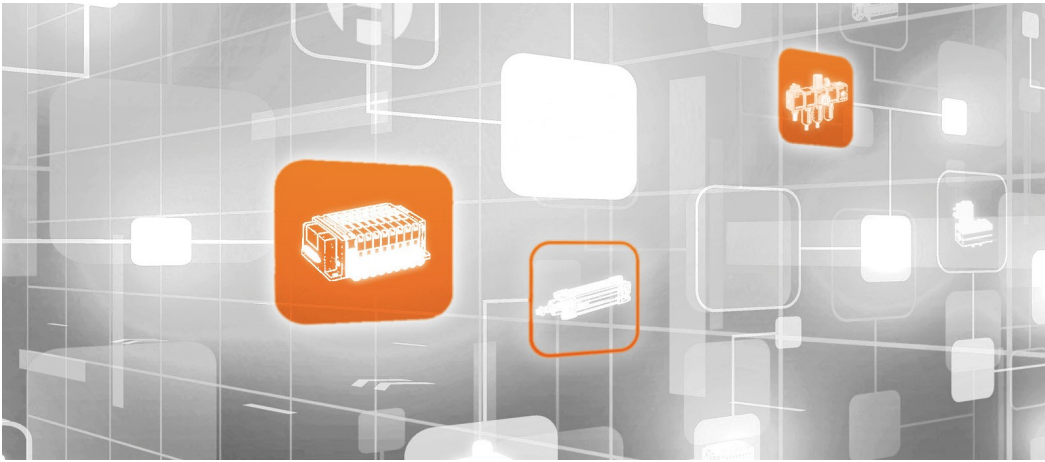
1) Blanking plate

Dimensions

Part No.	A	B
35500342	77	63
35500343	100	86
35500344	123	109
35500345	146	132
35500346	169	155
35500347	192	178

Part No.	A	B
35500348	215	201
35500349	238	224
35500350	261	247

Efficient pneumatic solutions, our program: cylinders and drives, valves and valve systems, air supply management



Visit us: [Emerson.com/Aventics](https://www.emerson.com/Aventics)

Your local contact: [Emerson.com/contactus](https://www.emerson.com/contactus)



[Emerson.com](https://www.emerson.com)



[Facebook.com/EmersonAutomationSolutions](https://www.facebook.com/EmersonAutomationSolutions)



[LinkedIn.com/company/Emerson-Automation-Solutions](https://www.linkedin.com/company/Emerson-Automation-Solutions)



[Twitter.com/EMR_Automation](https://twitter.com/EMR_Automation)

An example configuration is depicted on the title page. The delivered product may thus vary from that in the illustration. Subject to change. This Document, as well as the data, specifications and other information set forth in it, are the exclusive property of AVENTICS GmbH. It may not be reproduced or given to third parties without its consent. Only use the AVENTICS products shown in industrial applications. Read the product documentation completely and carefully before using the product. Observe the applicable regulations and laws of the respective country. When integrating the product into applications, note the system manufacturer's specifications for safe use of the product. The data specified only serve to describe the product. No statements concerning a certain condition or suitability for a certain application can be derived from our information. The information given does not release the user from the obligation of own judgement and verification. It must be remembered that the products are subject to a natural process of wear and aging.

The Emerson logo is a trademark and service mark of Emerson Electric Co. Brand logotype are registered trademarks of one of the Emerson family of companies. All other marks are the property of their respective owners. © 2021 Emerson Electric Co. All rights reserved.
2022-11-24



CONSIDER IT SOLVED™