

# ASCO™ Explosion Proof Gas Shutoff Valves with POC

NC, 1" to 2" NPT

2/2  
Series  
215

## Features

- 2-way normally closed for shutoff
- Unique double disc design with overtravel provides redundant sealing for leak tight shutoff
- Zero differential piloted diaphragm
- Ideal for low pressure applications
- Provides high flow, Kv up to 51
- Light weight, low power valves for on-off control of fuel gas in commercial and industrial gas burners
- Flameproof switch to indicate valve position



## Construction

Valve Parts in Contact with Fluids	
Body	Aluminum
Seals, Diaphragms, Disc	NBR
Core Guide	POM
Core Tube	305 Stainless Steel
Rider Rings	PTFE
Core and Plugnut	430F Stainless Steel
Springs	302 Stainless Steel
Shading Coil	Copper

## Electrical

Standard Coil and Class of Insulation	Watt Rating and Power Consumption				Ambient Temp. °C
	DC		AC		
	Watts	Watts	VA Holding	VA Inrush	
F	15.8	16.1	35	180	-40 to 51

**Standard Voltages:** 24, 120, 240 volts AC, 60 HZ (or 110, 220 volts AC, 50 Hz).  
6, 12, 24, 240 volts DC. Must be specified when ordering.

**Ex-mark:** Ex db mb IIC T3...T6 Gb  
Ex mb tb IIIC T200°C...T85°C Db

## Proof of Closure (POC) Switch

**Contact Form:** SPDT

**Switch Type:** NC (Inactive when valve is in closed position) or NO (Active when valve is in closed position)

**Max Electricity:** 120VAC/4A, 24VDC/3A

**Enclosure Material:** 316L stainless steel

**Ex-mark:** Ex db IIC T6 Gb; Ex tb IIIC T85°C Db; (-20°C ≤ Ta ≤ +50°C)

**Protection Class:** IP66/68

## Specifications

Pipe Size (in)	Orifice Size (mm)	Cv Flow Factor	Kv Flow Factor (m <sup>3</sup> /h)	Operating Pressure Differential (bar)		Max. Fluid Temp. °C		Valve with Switch, Conduit & Lead Wire 914mm (36")	Const. Ref.	Valve with Switch, Junction Box	Const. Ref.	Wattage		
				Min.	Max.	AC	DC					AC	DC	
NPT					AC	DC		Catalog Number		Catalog Number		AC	DC	
<b>Combustion (Fuel Gas) - Normally Closed</b>														
1	41	21	18	0	0.34	0.34	52	40	VCEFCM8215G050C1 <sup>(1)(2)</sup>	1	VCEFCM8215G050C2 <sup>(1)(2)</sup>	3	16.1/F	15.8/F
1 1/4	41	32	27	0	0.34	0.34	52	40	VCEFCM8215G060C1 <sup>(1)(2)</sup>	1	VCEFCM8215G060C2 <sup>(1)(2)</sup>	3	16.1/F	15.8/F
1 1/2	41	35	30	0	0.34	0.34	52	40	VCEFCM8215G070C1 <sup>(1)(2)</sup>	1	VCEFCM8215G070C2 <sup>(1)(2)</sup>	3	16.1/F	15.8/F
2	53	60	51	0	0.34	0.34	52	40	VCEFCM8215G080C1 <sup>(1)(2)</sup>	2	VCEFCM8215G080C2 <sup>(1)(2)</sup>	4	16.1/F	15.8/F

(1) Available option: TPL 24034 for 1/8" NPT plug in inlet and outlet.

(2) Available option: TPL 24047 for KOSHA certification (not available for 15.8W DC coil), TPL 24062 for IECEx/ATEX certification.

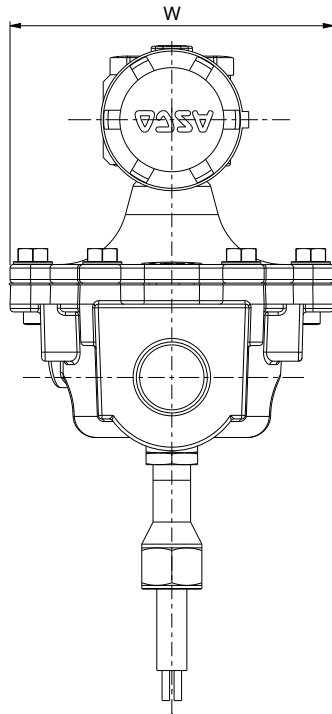
# ASCO™ Explosion Proof Gas Shutoff Valves with POC

NC, 1" to 2" NPT

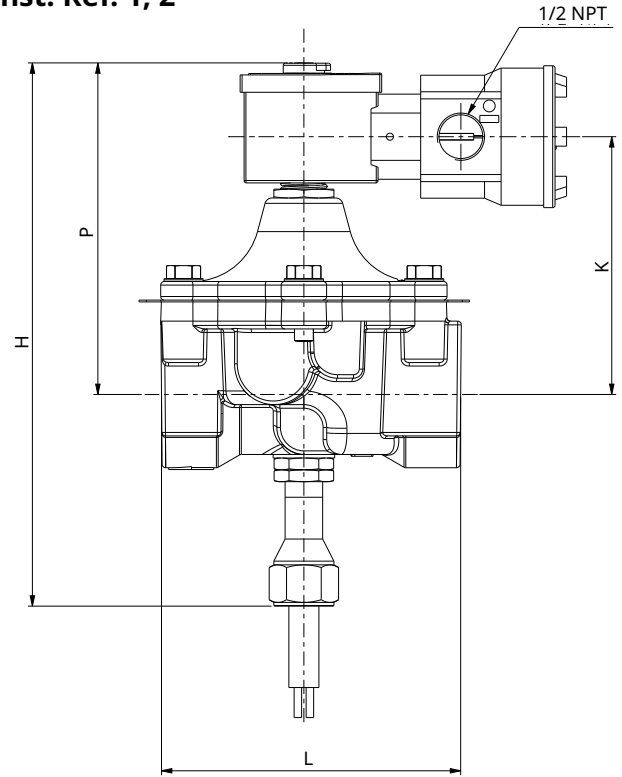
**2/2  
Series  
215**

## Dimensions: mm (inches)

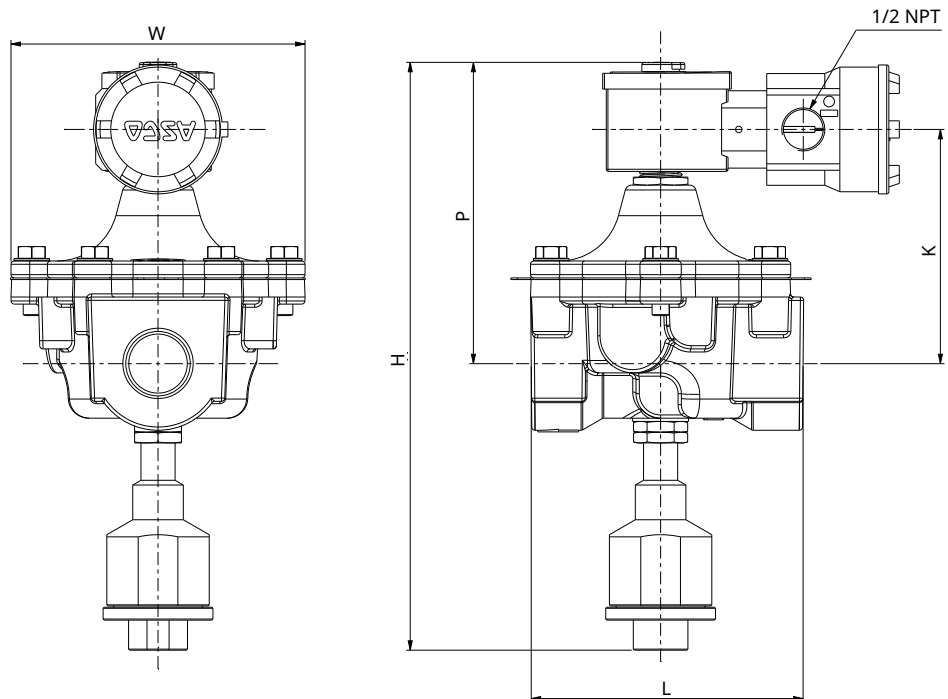
Const. Ref.	H	K	L	P	W
1	230	109	126	140	137
2	245	118	155	149	160
3	273	109	126	140	137
4	289	118	155	149	160



### Const. Ref. 1, 2



### Const. Ref. 3, 4



TR000714ENUS-01\_06-24  
Availability, design and specifications are subject to change without notice.  
© 2024 Emerson Electric Co. All rights reserved.