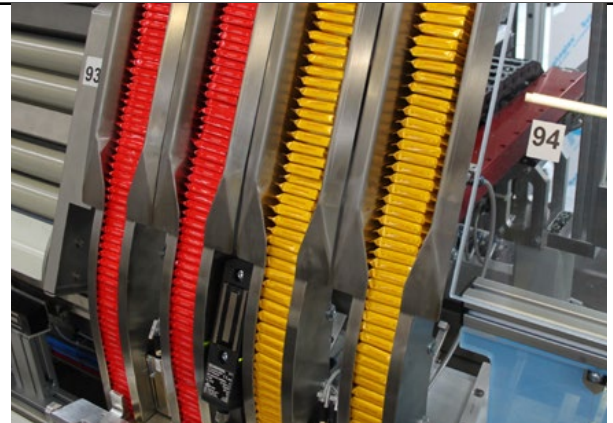


# Chocolate manufacturer achieves operation efficiencies with automated packaging solution

## RESULTS

- Throughput of more than 110 Cases per minute
- Flexibility to handle 15 filling variants
- Greater ability to scale and adapt to meet future needs



## APPLICATION

Packaging of chocolate bars into cardboard trays. Number of bars change depending on the product type resulting in 15 different variations.

## CUSTOMER

A renowned confectionery manufacturer based in Germany specializes in producing premium chocolates for global distribution.

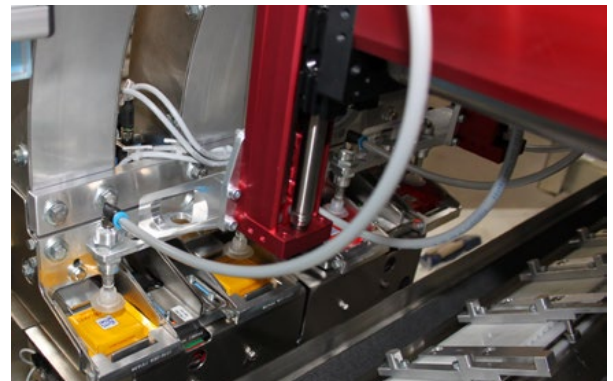
## CHALLENGE

The customer needed a machine that would be able to manage multiple packaging variants easily while maintaining a high production rate of 110 trays per minute. The solution needed to be adaptable to meet future needs easily, with the simple integration of technological advancements.

## SOLUTION

We provided a customized combined packaging plant. This included a 4 point station to set up cardboard trays and a total of 16 stations for flexible filling. Format changes are handled at the touch of a button. The production throughput requirements were met and the proven in use systems assured the required reliability to ensure Operating Equipment Effectiveness requirements were met.

*“Flexible packaging system able to handle 15 variants at the touch of a button”*



*Flexible solution easily manages product variations.*

Learn more:

