



**Build, maintain or expand
top quality electrical
infrastructures**

**Appleton™ and O-Z/Gedney™ Fittings
for Commercial and Industrial Locations**
Product Overview Brochure



The right electrical fittings to get the work done - fast and right.



Emerson™ delivers high quality fittings that installations rely on to help process our food, clean our water, generate our power and get us from place to place, safely. We offer the industry's broadest selection of fittings for the construction, MRO and OEM markets in industrial, commercial and residential applications.

Our Appleton™ and O-Z/Gedney™ products are manufactured to keep you and your job site safe and efficient. Superior design standards and a wide range of options allows us to meet the needs of a variety of application driven requirements. These products connect your wire, conduit, or cable to make electrical installations safer, more productive and more reliable.

For commercial and industrial locations, Emerson™ solutions ensure power is delivered where you need it.



Commercial and industrial location fittings manufactured with durable materials and consistent construction for easy installation make a difference in the speed and final quality of any electrical job, indoors or outdoors.

[Steel Outlet / Switch Boxes and Covers ▶ p4](#)

[Weatherproof Outlet / Switch Boxes and Covers ▶ p4](#)

[EMT Fittings ▶ p5](#)

[EMT Raintight Fittings ▶ p6](#)

[Conduit Fittings / Rigid IMC ▶ p6](#)

[Conduit Fittings / Rigid IMC Hubs ▶ p7](#)

[Insulated / Grounding Bushings ▶ p8](#)

[Grounding Clamps ▶ p8](#)

[Conduit Outlet Bodies and Moguls ▶ p9](#)

[Cast Outlet and Device Boxes ▶ p10](#)

[Liquidtight Conduit Fittings ▶ p10](#)

[Cord Grips ▶ p12](#)

[Flexible Metal Conduit \(FMC\) and Connectors ▶ p12](#)

[Nonmetallic Cable Connectors ▶ p13](#)

[Service Entrance Heads / Fittings ▶ p13](#)

[Cable Clamps and Straps ▶ p14](#)

Steel Outlet / Switch Boxes and Covers



The best electricians insist on the best products. Durable materials, consistent construction and easy installation all make a difference in the speed and final quality of any wiring job. That is why the best electricians choose our products. Indoors or outdoors, wherever conduit or cable terminates at a switch/outlet box, junction box, lamp holder or fixture, our Appleton™ and O-Z/Gedney™ brands are a sign of professional quality.

| Product | Material | Finish | UL LISTED | C UL LISTED | C UL US LISTED | SF [®] | SF [®] US | Ex |
|---|-----------------------|-------------|-----------|-------------|----------------|-----------------|--------------------|----|
| Ceiling Fan Boxes | Steel | Zinc Plated | ✓ | | | | | |
| Round Boxes and Covers | Steel | Zinc Plated | ✓ | | | | | |
| 3-1/4" Octagon Boxes and Extension Ring | Steel | Zinc Plated | ✓ | | | | | |
| 4" Octagon Boxes, Extension Rings and Covers | Steel | Zinc Plated | ✓ | | | | | |
| 4" Square Boxes, Extension Rings and Covers | Steel | Zinc Plated | ✓ | | | | | |
| 4-11/16" Square Boxes, Extension Rings and Covers | Steel | Zinc Plated | ✓ | | | | | |
| Handy Boxes, Extension Rings and Covers | Steel | Zinc Plated | ✓ | | | | | |
| 4" Octagon Concrete Boxes and Back Plates | Steel | Zinc Plated | ✓ | | | | | |
| Bar Hangers | Steel | Zinc Plated | ✓ | | | | | |
| Switch Boxes | Steel | Zinc Plated | ✓ | | | | | |
| Multigang Switch Boxes and Covers | Steel | Zinc Plated | ✓ | | | | | |
| Masonry Boxes | Steel | Zinc Plated | ✓ | | | | | |
| Knockout Blanks and Fixture Stems | Steel, Malleable Iron | | | ✓ | | | | |
| Outlet Box/Switch Box Accessories | Steel | Zinc Plated | ✓ | | | | | |
| NEER™ Safety Plates and Switch Box Supports | Steel | Zinc Plated | | | | | | |

Weatherproof Outlet / Switch Boxes and Covers



Our Appleton and O-Z/Gedney brand weatherproof boxes, cover and lampholders are marine rated and ideal for use in highly corrosive areas, beaches, docks, pools, or other wet location areas. Use in branch circuit wiring for wet, damp or dry locations. Rugged construction prevents entry of dirt, dust and moisture.

| Product | Material | Finish | UL LISTED | C UL LISTED | C UL US LISTED | SF [®] | SF [®] US | Ex |
|---|--------------------|--------|-----------|-------------|----------------|-----------------|--------------------|----|
| Weatherproof Boxes, Covers, Lampholders and Lighting Fixtures | Aluminum | | | ✓ | | | | |
| One-Gang Weatherproof In-Use Covers with Inserts | Aluminum | | | ✓ | | | | |
| Two-Gang Weatherproof In-Use Covers with Inserts | Aluminum | | | ✓ | | | | |
| Weatherproof Incandescent Fixtures | Aluminum | | | ✓ | | | | |
| Accessories and Replacement Parts | Aluminum | | | ✓ | | | | |
| Non-Metallic Weatherproof Boxes, Covers and Lampholders | PVC, polycarbonate | | | ✓ | | | | |

EMT Fittings



We offer a complete line of connectors and couplings for EMT conduit. Fittings are available in steel, malleable iron and zinc diecast, using either a compression or set-screw design.

| Product | Material | Finish | UL LISTED | C UL LISTED | C UL US LISTED | SF | C SF US | Ex |
|---|-----------------------|--------------------|-----------|-------------|----------------|----|---------|----|
| ETP™ 4000S Series Steel EMT Set Screw Connectors | Steel | Zinc Plated | ✓ | | | ✓ | | |
| ETP™ 5000S Series Steel EMT Set Screw Couplings | Steel | Zinc Plated | ✓ | | | ✓ | | |
| ETP™ 7000S Series Steel EMT Compression Connectors | Steel | Zinc Plated | ✓ | ✓ | | | | |
| ETP™ 6000S Series Steel EMT Compression Couplings | Steel | Zinc Plated | ✓ | ✓ | | | | |
| ETP™ 4000US Series Steel EMT Set Screw Connectors | Steel | Zinc Plated | ✓ | | | ✓ | | |
| ETP™ 5000US Series Steel EMT Set Screw Couplings | Steel | Zinc Plated | | ✓ | | | | |
| ETP™ 7000US Series Steel EMT Compression Connectors | Steel | Zinc Plated | | ✓ | | | | |
| ETP™ 6000US Series Steel EMT Compression Couplings | Steel | Zinc Plated | | ✓ | | | | |
| NEER™ Standard Conduit Locknuts | Steel | Zinc Plated | ✓ | | | | | |
| O-Z/Gedney™ Type RW Reducing Washers | Steel | Zinc Plated | ✓ | | | ✓ | | |
| Appleton™ Reducing Washers | Steel | Zinc Plated | | | | | | |
| NEER™ Reducing Washers and Bushings | Steel | Zinc Plated | ✓ | | | ✓ | | |
| NEER™ EMT Straps | Steel | Zinc Plated | ✓ | | | ✓ | | |
| Appleton™ EMT Transition Couplings | Steel | Zinc Plated | ✓ | | | | | |
| O-Z/Gedney™ EMT Angle Set Screw Connectors | Steel | Zinc Plated | ✓ | | | ✓ | | |
| O-Z/Gedney™ EMT Angle Compression Connectors | Steel | Zinc Plated | ✓ | | | ✓ | | |
| O-Z/Gedney™ EMT Combination Couplings | Malleable Iron, Steel | Zinc Plated | ✓ | | | ✓ | | |
| O-Z/Gedney™ EMT Clamps and Straps | Malleable Iron, Steel | Zinc Plated | ✓ | | | ✓ | | |
| O-Z/Gedney™ EMT Straps | Malleable Iron | Hit Dip Galvanized | | | | ✓ | | |
| O-Z/Gedney™ EMT Malleable Iron Straps and Spacers | Steel | Zinc Plated | ✓ | | | ✓ | | |
| O-Z/Gedney™ EMT Adapters | Malleable Iron | Zinc Plated | ✓ | | | ✓ | | |
| NEER™ Zinc Set Screw Connectors and Couplings | Zinc | Natural Finish | ✓ | | | ✓ | | |
| NEER™ Zinc 90°; Gland Compression Connectors | Zinc | Natural Finish | ✓ | | | ✓ | | |
| NEER™ Zinc 90°; Corner Pulling Elbows | Zinc | Natural Finish | | | | | | |
| NEER™ Zinc Set Screw Offset Nipples | Zinc | Natural Finish | | ✓ | | ✓ | | |

EMT Raintight Fittings



UL Listed raintight steel compression connectors and couplings are used for grounding and securing EMT raceways to boxes and enclosures in wet locations.

| Product | Material | Finish | UL LISTED | C UL LISTED | C UL US LISTED | SF [®] | SF [®] C US | Ex |
|---|----------|----------------|-----------|-------------|----------------|-----------------|----------------------|----|
| ETP™ Raintight 6000GSR Series Gland Compression Couplings | Steel | Zinc Plated | | | ✓ | | | |
| ETP™ Raintight 7000GSR Series Gland Compression Connectors with or without insulated throat | Steel | Zinc Plated | | | ✓ | | | |
| NEER™ Zinc Gland Compression Connectors and Couplings | Zinc | Natural Finish | ✓ | | | ✓ | | |

Conduit Fittings / Rigid IMC



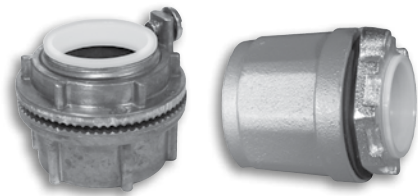
We offer a complete selection of steel, malleable iron and zinc diecast fittings for rigid conduit and IMC. Threaded and threadless, insulated or uninsulated, watertight or general purpose, our conduit fittings, straps and accessories are available in all the sizes and configurations required to connect and support rigid and IMC conduit bonding it to virtually any type of junction box or enclosure.

| Product | Material | Finish | UL LISTED | C UL LISTED | C UL US LISTED | SF [®] | SF [®] C US | Ex |
|--|------------------------------|---------------------------------------|-----------|-------------|----------------|-----------------|----------------------|----|
| O-Z/Gedney™ SCC and SSP Threaded Rigid Conduit and IMC Bolt-On™ Couplings | Malleable Iron | Zinc Electroplate | ✓ | | | ✓ | | |
| O-Z/Gedney™ Threaded Three Piece Couplings and Elbows | Malleable Iron | Zinc Electroplate | ✓ | | | ✓ | | |
| Threaded Enlargers and Nipples | Malleable Iron, Steel | Zinc Electroplate | ✓ | | | ✓ | | |
| O-Z/Gedney™ Type ICC Phenolic Insulating Couplings | Phenolic | Natural Finish | | | | | | |
| Threadless Compression and Set-Screw Couplings and Connectors | Malleable Iron | Zinc Electroplate | ✓ | | | ✓ | | |
| O-Z/Gedney™ Type EF and Type EFL Concrete Slab Electroform Inserts | Malleable Iron | Zinc Electroplate | ✓ | | | ✓ | | |
| O-Z/Gedney™ Conduit End Bells | Malleable Iron, Ductile Iron | Hot Dip Galvanized | | | | | | |
| NEER™ Bushed Conduit Nipples | Zinc Diecast | Natural Finish | ✓ | | | ✓ | | |
| NEER™ Offset Nipples and Three Piece Couplings | Zinc/ Malleable Iron | Zinc Plated | ✓ | | | ✓ | | |
| NEER™ Pulling Ells | Zinc | Natural Finish | ✓ | | | ✓ | | |
| Appleton™ Beam Clamps, Straps, Clamps and Clamp Backs for Rigid Metal Conduit or IMC | Malleable Iron, Steel | Hot Dip Galvanized, Zinc Electroplate | | | | ✓ | | |
| O-Z/Gedney™ Clamps, Straps and Clamp Backs for Rigid Metal Conduit or IMC | Aluminum | Epoxy Powder Coat | ✓ | | | ✓ | | |

Conduit Fittings / Rigid IMC (continued)

| Product | Material | Finish | UL LISTED | C UL LISTED | C UL US LISTED | SF [®] | C SF [®] US | Ex |
|--|-----------------|-----------------------------|-----------|-------------|----------------|-----------------|----------------------|----|
| Appleton™ and O-Z/Gedney™ Rigid Metal Conduit, IMC or EMT "K-Clamps" | Malleable Iron, | Hot Dip Galvanized | | | | ✓ | | |
| Appleton™ and O-Z/Gedney™ RMC, IMC or EMT Hang-On™ Hangers | Steel | Zinc Plated | ✓ | | | ✓ | | |
| Appleton™ Rigid Metal Conduit, IMC or EMT Pipe Hangers | Malleable Iron | Zinc Plated | ✓ | | | ✓ | | |
| O-Z/Gedney™ Rigid Metal Conduit, IMC or EMT Pipe Hangers | Malleable Iron | Hot Dip Galvanized | | | | ✓ | | |
| Appleton™ TCC Single TCCD Double Conduit Cable Tray Clamps | Malleable Iron | Hot Dip Galvanized | ✓ | | | | | |
| O-Z/Gedney™ CTC Conduit Cable Tray Clamps | Zinc | Natural Finish | ✓ | | | ✓ | | |
| NEER™ Straps | Aluminum, Steel | Natural Finish, Zinc Plated | | | | | | |
| NEER™ Conduit Hangers | Plastic | Natural Finish | ✓ | | | | | |
| NEER™ Nail Straps | Zinc | Natural Finish | ✓ | | | ✓ | | |
| NEER™ Beam Clamps, Jack Chain and S Hooks | Zinc | Natural Finish | ✓ | | | ✓ | | |
| NEER™ Cable Staples | Aluminum | Natural Finish | ✓ | | | ✓ | | |
| Rigid Conduit and IMC Locknuts | Steel, Aluminum | Natural Finish | ✓ | | | ✓ | | |
| NEER™ Zinc Combination Couplings | Zinc | Natural Finish | ✓ | | | ✓ | | |
| Appleton™ TL Thread and Joint Lubricants | | | | | | | | |
| O-Z/Gedney™ STL Thread and Joint Lubricant | | | | | | | | |

Conduit Fittings / Rigid IMC Hubs



We offer a selection of steel, malleable iron and zinc diecast hubs for rigid and IMC conduit. Watertight or general purpose versions are available in all the sizes required to connect and support rigid and IMC conduit bonding it to virtually any type of junction box or enclosure.

| Product | Material | Finish | UL LISTED | C UL LISTED | C UL US LISTED | SF [®] | C SF [®] US | Ex |
|--|-----------------------|---------------------------------|-----------|-------------|----------------|-----------------|----------------------|----|
| O-Z/Gedney™ Type CH Space-Maker Raintight Conduit Hubs | Ductile Iron | Zinc Electroplate | ✓ | | | ✓ | | |
| O-Z/Gedney™ Type CHM Conduit Hubs | Malleable Iron, Steel | Triplecoat ①, Zinc Electroplate | ✓ | | | ✓ | | |
| Appleton™ Threaded Raintight Conduit Hubs With Bonding Screw | Malleable Iron, Steel | Triplecoat ①, Zinc Electroplate | ✓ | | | ✓ | | |
| Appleton™ Threaded Raintight Conduit Hubs | Ductile Iron | Zinc Electroplate | ✓ | | | ✓ | | |
| Appleton™ and O-Z/Gedney™ Globally Certified Raintight Hubs | Zinc, Aluminum | Natural Finish | | | ✓ | ✓ | | ✓ |
| Appleton™ and O-Z/Gedney™ Aluminum Diecast Watertight Hubs | Aluminum | Natural Finish | ✓ | | | ✓ | | |
| Appleton™ and O-Z/Gedney™ Zinc Diecast Watertight Hubs | Zinc | Natural Finish | ✓ | | | ✓ | | |

① Triplecoat: zinc electroplate, chromate, epoxy powder coat.

Insulated / Grounding Bushings



Insulated bushings help protect conductors from abrasion during pulling or due to mechanical vibration. They also provide a voltage gradient between the live conductors and ground at the point where conductor insulation is subjected to electrical and mechanical stress.

| Product | Material | Finish | UL LISTED | C UL LISTED | C UL US LISTED | SF [®] | SF [®] US | Ex |
|--|---|--|-----------|-------------|----------------|-----------------|--------------------|----|
| O-Z/Gedney™ Spec Grade Types A, ABB, BB and BBL Insulating Bushings | Phenolic | Natural Finish | ✓ | | | ✓ | | |
| O-Z/Gedney™ Spec Grade -Types B, HB, AB, RB, SB and SBT Specification Grade Insulated Bushings | Steel, Malleable Iron, Aluminum, Bronze | Zinc Plated, Hot Dip Galvanized, Mechanical Galvanized | ✓ | | | ✓ | | |
| O-Z/Gedney™ Types BLG and HBLG Specification Grade Insulated Grounding Bushings | Steel, Malleable Iron | Zinc Plated, Hot Dip Galvanized | ✓ | | | ✓ | | |
| O-Z/Gedney™ Types ABLG and RBLG Specification Grade Insulated Grounding Bushings | Aluminum, Bronze | Natural Finish | ✓ | | | ✓ | | |
| O-Z/Gedney™ Type SBLG Specification Grade Insulated Grounding Bushings | Steel, Malleable Iron | Zinc Plated | ✓ | | | ✓ | | |
| O-Z/Gedney™ Type 300R Hex Reducing Bushings | Malleable Iron | Zinc Electroplate | ✓ | | | ✓ | | |
| O-Z/Gedney™ Conduit Bushings for Rigid Metal Conduit and IMC | Malleable Iron, Thermoplastic | Zinc Electroplate, Natural Finish | ✓ | | | ✓ | | |
| O-Z/Gedney™ Insulated Grounding Bushing for Threadless and Threaded RMC IMC | Malleable Iron | Zinc Plated | ✓ | | | ✓ | | |
| NEER™ Zinc Bushings | Zinc | Natural Finish | ✓ | | | ✓ | | |
| NEER™ Zinc Grounding Type Insulated Bushings | Zinc | Natural Finish | ✓ | | | ✓ | | |

Grounding Clamps



Without the right clamps, grounding conduit and meeting code can be a challenge. We supply all the right hardware for any job, designed to simplify installation and lower inventories by handling more sizes of conduit with fewer clamps.

| Product | Material | Finish | UL LISTED | C UL LISTED | C UL US LISTED | SF [®] | SF [®] US | Ex |
|--|---|---|-----------|-------------|----------------|-----------------|--------------------|----|
| O-Z/Gedney™ Ground Clamps | Aluminum, Bronze, Malleable Iron, Steel, Copper | Tin Plated, Hot Dip Galvanized, Zinc Electroplate, Natural Finish | ✓ | | | ✓ | | |
| O-Z/Gedney™ Ground Connectors | Copper | Natural Finish | ✓ | | | ✓ | | |
| O-Z/Gedney™ XTP Solderless Combination T and Parallel Taps | Copper | Natural Finish | ✓ | | | | | |
| O-Z/Gedney™ Type XLH Solderless Connectors Combination Type Lugs | Copper | Natural Finish | ✓ | | | | | |
| O-Z/Gedney™ Type FB Solderless Flexible Braid Connectors | Tinned Copper | Tinned Copper | | | | | | |
| NEER™ Ground Clamps | Bronze | Natural Finish | ✓ | | | ✓ | | |

Conduit Outlet Bodies and Moguls



We provide threaded and set-screw type conduit bodies and moguls for pulling, splicing and maintaining wires installed in EMT, rigid, or IMC conduit. Conduit bodies, covers and gaskets can be ordered separately or as complete assemblies ready for installation. Conduit bodies are available in straight-through feed through, 90° bend and multi-hub designs, all featuring aluminum or iron construction with an attractive, durable epoxy powder coat finish.

| Product | Material | Finish | UL LISTED | cUL LISTED | cUL LISTED US | SF [®] | SF [®] US | Ex |
|--|--------------------------|----------------------------------|-----------|------------|---------------|-----------------|--------------------|----|
| Appleton™ Form 35™ Malleable Iron Conduit Outlet Bodies | Malleable Iron | Triplecoat ① | ✓ | | | ✓ | | |
| O-Z/Gedney™ Spec 5 Conduit Outlet Bodies, Covers and Gaskets | Malleable Iron | Triplecoat ①, Hot Dip Galvanized | ✓ | | | ✓ | | |
| Appleton™ FM7™ Conduit Outlet Bodies | Grayloy-Iron, Aluminum | Triplecoat ① | ✓ | | | ✓ | | |
| O-Z/Gedney™ Form 7™ Iron Conduit Outlet Bodies, Covers and Gaskets | Grayloy-Iron | Triplecoat ①, Hot Dip Galvanized | | | | | | |
| Appleton™ FM8™ Conduit Outlet Bodies | Grayloy-Iron | Triplecoat ① | ✓ | | | ✓ | | |
| Appleton™ Form 85™ Unilets™ Conduit Outlet Bodies, Covers and Gaskets | Aluminum | Epoxy Powder Coat | ✓ | | | ✓ | | |
| O-Z/Gedney™ Aluminum Conduit Outlet Bodies, Covers and Gaskets | Aluminum | Epoxy Powder Coat | ✓ | | | ✓ | | |
| Appleton™ FM9™ Aluminum Conduit Outlet Bodies Covers Gaskets | Aluminum | Natural Finish | ✓ | | | ✓ | | |
| Appleton™ NEC 6x8x Mogul Conduit Outlet Bodies, Covers and Gaskets | Malleable Iron, Aluminum | Triplecoat ①, Coat | ✓ | | | ✓ | | |
| Appleton™ and O-Z/Gedney™ 6x8x Mogul Conduit Outlet Bodies, Covers and Gaskets | Malleable Iron, Aluminum | Triplecoat ①, Coat | ✓ | | | ✓ | | |
| Appleton™ LBD and LBDN Pulling Fittings | Malleable Iron, Aluminum | Triplecoat ①, Coat | ✓ | | | ✓ | | |
| Appleton™ Pull Boxes with Threaded Hubs and Covers | Steel | Triplecoat ① | ✓ | | | | | |
| Appleton™ Big Bend Cast Pulling Elbow | Aluminum | Acrylic Paint | | | | ✓ | | |
| NEER™ Aluminum Threaded Conduit Outlet Bodies, Covers and Gaskets | Aluminum | Epoxy Powder Coat | ✓ | | | ✓ | | |
| NEER™ All-In-One Threaded Conduit Outlet Bodies | Aluminum | Epoxy Powder Coat | ✓ | | | ✓ | | |
| NEER™ All-In-One Multi-Hub Threaded and Set Screw Conduit Outlet Bodies | Aluminum | Epoxy Powder Coat | ✓ | | | ✓ | | |
| NEER™ Aluminum Set Screw Conduit Outlet Bodies and Accessories | Aluminum | Epoxy Powder Coat | ✓ | | | ✓ | | |

① Triplecoat: zinc electroplate, chromate, epoxy powder coat.

Cast Outlet and Device Boxes



Our cast device boxes incorporate several innovative and useful features. Ridge top construction creates a positive seal against moisture when the cover and gasket are tightened against the body. Wet location receptacle covers provide a gasket that sets around the plug to seal out moisture even when the receptacle is in use. Captive stainless steel screws simplify installation and prevent “freezing.” Hub and cover options meet virtually any requirement. Whatever size box you need, we’re your source.

| Product | Material | Finish | UL LISTED | C UL LISTED | C UL US LISTED | SF [®] | SF [®] US | Ex |
|--|--------------------------|---------------------------------|-----------|-------------|----------------|-----------------|--------------------|----|
| Appleton™ JB Conduit Outlet Boxes, Covers and Hangers | Malleable Iron, Aluminum | Triplecoat ①, Epoxy Powder Coat | ✓ | | | | | |
| Appleton™ BKX Round Junction Boxes | Gray Iron | Triplecoat ① | | | | ✓ | | |
| Appleton™ SEH Conduit Outlet Boxes and Covers | Malleable Iron | Triplecoat ① | ✓ | | | | | |
| Appleton™ GS Conduit Outlet Boxes, Covers and Hangers | Malleable Iron | Triplecoat ① | | | | | | |
| Appleton™ GS Round Junction Boxes | Aluminum | Triplecoat ① | | | | ✓ | | |
| Appleton™ and O-Z/Gedney™ FS and FD Cast Hub Device Boxes | Malleable Iron, Aluminum | Triplecoat ①, Epoxy Powder Coat | ✓ | | | ✓ | | |
| Appleton™ and O-Z/Gedney™ FS and FD Cast Hub Device Boxes (CSA) | Malleable Iron | Triplecoat ① | | | | ✓ | | |
| Appleton™ and O-Z/Gedney™ FDB Single and Multiple Gang Cast Device Boxes | Malleable Iron, Aluminum | Triplecoat ①, Epoxy Powder Coat | ✓ | | | | | |
| Appleton™ and O-Z/Gedney™ FDH Single and Multiple Gang Cast Device Boxes | Malleable Iron | Triplecoat ① | ✓ | | | | | |

Liquidtight Conduit Fittings






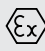


For providing safe electrical service in areas exposed to weather, water, oil, dirt and other contaminants, we offer a full line of connectors, hubs and accessories for use with liquidtight flexible metal conduit. Aluminum, steel, stainless steel, zinc and nonmetallic connectors are available, with a variety of options including straight, 45° and 90° angle fittings with or without insulated throats, external grounding lugs and stainless steel wire mesh strain relief.

| Product | Material | Finish | UL LISTED | C UL LISTED | C UL US LISTED | SF [®] | SF [®] US | Ex |
|--|-----------------------|---------------------------------|-----------|-------------|----------------|-----------------|--------------------|----|
| Appleton™ Liquidtight ST™ and STB Insulated Throat Connectors | Steel, Malleable Iron | Zinc Electroplate, Triplecoat ① | ✓ | | | ✓ | | |
| Appleton™ Liquidtight STF Connectors with Threaded Hubs | Steel, Malleable Iron | Zinc Electroplate, Triplecoat ① | ✓ | | | ✓ | | |
| Appleton™ Liquidtight Flexible Metal Conduit Connectors with Wire Mesh Strain Relief | Steel, Malleable Iron | Zinc Electroplate, Triplecoat ① | ✓ | | | ✓ | | |
| Appleton™ Liquidtight ST™ and STB Connectors and External Grounding Lugs | Steel, Malleable Iron | Zinc Electroplate, Triplecoat ① | ✓ | | | ✓ | | |

① Triplecoat: zinc electroplate, chromate, epoxy powder coat.

Liquidtight Conduit Fittings (continued)

| Product | Material | Finish |  |  |  |  |  |  |
|---|--|---|---|---|---|---|---|---|
| Appleton™ Liquidtight STN Connectors for Liquidtight Flexible Metal Conduit | Steel, Malleable Iron | Zinc Electroplate, Triplecoat ① | ✓ | | | ✓ | | |
| Appleton™ Aluminum Liquidtight ST™ Series Connectors with Plain Throat | Aluminum | Natural Finish | ✓ | | | ✓ | | |
| Appleton™ Liquidtight STNM™ Type A Flexible Nonmetallic Conduit Connectors | Steel | Natural Finish | ✓ | | | ✓ | | |
| Appleton™ PG and ISO Metric Thread Liquidtight Insulated Connectors | Steel, Malleable Iron, Aluminum | Zinc Electroplate, Triplecoat ①, Natural Finish | ✓ | | | ✓ | | |
| Appleton™ Liquidtight Accessories | Steel, Neoprene, Aluminum, Stainless Steel | Natural Finish | ✓ | | | ✓ | | |
| O-Z/Gedney™ 4Q Straight Liquidtight Connectors | Malleable Iron | Zinc Electroplate | ✓ | | | ✓ | | |
| O-Z/Gedney™ 4Q 45°; and 90°; Liquidtight Connectors | Malleable Iron | Zinc Electroplate | ✓ | | | ✓ | | |
| O-Z/Gedney™ 4Q-FM Liquidtight Combination Couplings | Malleable Iron | Zinc Plated | ✓ | | | ✓ | | |
| O-Z/Gedney™ 4Q-WM Wire Mesh Liquidtight Connectors with Wire Mesh Strain Relief | Malleable Iron | Zinc Electroplate | ✓ | | | ✓ | | |
| O-Z/Gedney™ 4Q Liquidtight Sealing Ring Assemblies | Steel | Zinc Electroplate | | | | | | |
| O-Z/Gedney™ Ground-Tite™ 4Q Grounding Liquidtight Connectors | Malleable Iron | Zinc Electroplate | ✓ | | | ✓ | | |
| O-Z/Gedney™ Ground-Tite™ 4Q 45°; Grounding Liquidtight Connectors | Malleable Iron | Zinc Electroplate | ✓ | | | ✓ | | |
| O-Z/Gedney™ Ground-Tite™ 4Q 90°; Grounding Liquidtight Connectors | Malleable Iron | Zinc Electroplate | ✓ | | | ✓ | | |
| O-Z/Gedney™ Ground-Tite™ 4Q Liquidtight Combination Couplings | Malleable Iron | Zinc Electroplate | ✓ | | | ✓ | | |
| Appleton™ and O-Z/Gedney™ 4QS Straight, 45°; and 90°; Steel Liquidtight Fittings | Steel, Malleable Iron | Zinc Plated | ✓ | | | ✓ | | |
| Appleton™ and O-Z/Gedney™ 4QSS Straight, 45°; and 90°; Stainless Steel Liquidtight Connectors | Stainless Steel | Natural Finish | | | ✓ | | | |
| NEER™ Zinc Straight Liquidtight Connectors | Zinc | Natural Finish | ✓ | | | ✓ | | |
| NEER™ Zinc 90°; Liquidtight Connectors | Zinc | Natural Finish | ✓ | | | ✓ | | |
| NEER™ Nylon Liquidtight Connectors | Nylon | Natural Finish | ✓ | | | ✓ | | |

① Triplecoat: zinc electroplate, chromate, epoxy powder coat.

Cord Grips



Cord grip connectors are used to secure and terminate non-armored flexible electrical cable to a threaded entry in a box or enclosure. They are available in straight and 90° versions in a wide range of cable and hub sizes, with or without wire mesh grips for strain relief and pullout resistance.

| Product | Material | Finish | UL LISTED | cUL LISTED | cUL US LISTED | SF | SF US | Ex |
|--|---------------------------|--------------------|-----------|------------|---------------|----|-------|----|
| Appleton™ CG Series | Aluminum, Steel | Natural Finish | ✓ | | | ✓ | | |
| O-Z/Gedney™ Grip-Tite™ Strain Relief Connectors | Malleable Iron | Zinc Plated | ✓ | | | ✓ | | |
| O-Z/Gedney™ Gold Seal Strain Relief Connectors | Malleable Iron | Hot Dip Galvanized | ✓ | | | ✓ | | |
| O-Z/Gedney™ Type CGA Aluminum Straight Strain Relief Cord Grip Connectors | Aluminum | Natural Finish | ✓ | | | ✓ | | |
| O-Z/Gedney™ Type CGA Aluminum 90°; Strain Relief Cord Grip Connectors | Aluminum | Natural Finish | ✓ | | | ✓ | | |
| O-Z/Gedney™ CGA Aluminum Straight and 90°; Strain Relief Cord Grip Connectors with wire mesh strain relief | Aluminum | Natural Finish | | | | | | |
| Appleton™ Aluminum and Steel Liquidtight Strain Relief Cord and Cable Connectors | Aluminum, Steel | Natural Finish | ✓ | | | ✓ | | |
| Appleton™ Stainless Steel and Aluminum Liquidtight Cable/ Cord Connectors | Stainless Steel, Aluminum | Zinc Plated | | | | | | |
| Appleton TC Series Tray Cable Connectors | Aluminum | Natural Finish | | | | | ✓ | ✓ |

Flexible Metal Conduit (FMC) and Non-Metallic Flexible Conduit (NMFC) Connectors



For many applications, armored and metal clad cables provide simpler, more cost effective installation than traditional non-armored cable in conduit. Cable manufacturers have developed many new types of armored and metal clad cable to meet the increasing demand, creating a need for innovative connection solutions to accommodate the wide range of cable types and sizes on the market today. From simple twist-on connectors to watertight gland type connectors, we are the only source you need to connect and terminate any type of armored metal clad cable, in any application.

| Product | Material | Finish | UL LISTED | cUL LISTED | cUL US LISTED | SF | SF US | Ex |
|--|----------------|--------------------|-----------|------------|---------------|----|-------|----|
| O-Z/Gedney™ Type PK Armored/Metal Clad Cable Connectors | Malleable Iron | Zinc Electroplate | ✓ | | | ✓ | | |
| O-Z/Gedney™ Type PG Armored/Metal Clad Cable Connectors | Malleable Iron | Zinc Plated | ✓ | | | ✓ | | |
| O-Z/Gedney™ Cable Connectors | Malleable Iron | Zinc Plated | ✓ | | | ✓ | | |
| Appleton™ Non-metallic Sheathed Cable Connectors | Malleable Iron | Zinc Plated | ✓ | | | | | |
| Appleton™ Armored Cable and Flexible Metal Conduit Connectors | Malleable Iron | Hot Dip Galvanized | ✓ | | | ✓ | | |
| Appleton™ and O-Z/Gedney™ SPEED-LOCK™ Box Connectors and Snap Connectors | Malleable Iron | Zinc Electroplate | ✓ | | | ✓ | | |
| NEER™ Cable and Conduit Connectors | Zinc | Natural Finish | ✓ | | | ✓ | | |
| NEER™ Cable Connectors | Zinc | Natural Finish | ✓ | | | ✓ | | |
| NEER™ Anti-Short Bushings | Plastic | Natural Finish | | | | | | |

Nonmetallic Cable Connectors



Our nonmetallic cable connectors are used to ground and secure nonmetallic sheathed cable to boxes and enclosures. A thermoplastic cam lock version is available, as well as a malleable iron version with screws that can additionally be used to ground and secure service entrance cable to boxes and enclosures.

| Product | Material | Finish | UL LISTED | C UL LISTED | C UL US LISTED | SFA | SFA C US | Ex |
|---|----------|----------------|-----------|-------------|----------------|-----|----------|----|
| NEER™ Connectors for Nonmetallic Sheathed Cable | Zinc | Natural Finish | ✓ | | | ✓ | | |

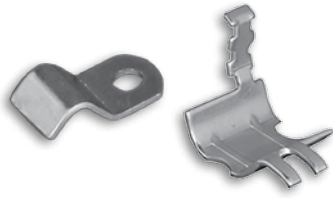
Service Entrance Heads / Fittings



Look up, and you will find our products at the electrical service entrance of all kinds of residential and commercial buildings. We offer a complete line, from service entrance caps and straps to flashings, connectors, wire holders, pulling ells and more – everything the contractor needs to bring electricity into the building while keeping the weather out.

| Product | Material | Finish | UL LISTED | C UL LISTED | C UL US LISTED | SFA | SFA C US | Ex |
|--|---------------------------|---|-----------|-------------|----------------|-----|----------|----|
| O-Z/Gedney™ Service Entrance Heads | Malleable Iron | Hot Dip Galvanized | ✓ | | | ✓ | | |
| O-Z/Gedney™ Watertight Service Entrance and UF Cable Connectors | Malleable Iron | Zinc Electroplate | ✓ | | | | | |
| O-Z/Gedney™ Non-Watertight Service Entrance Connectors | Malleable Iron | Mechanical Galvanized, Zinc Plated | ✓ | | | ✓ | | |
| Appleton™ Service Entrance Cable Connectors | Malleable Iron, Cast Iron | Hot Dip Galvanized, Mechanical Galvanized | | | | ✓ | | |
| Appleton™ Nonmetallic Sheathed and Service Entrance Cable Connectors | Malleable Iron, Steel | Zinc Plated, Zinc Electroplate | ✓ | | | ✓ | | |
| O-Z/Gedney™ Round Service Entrance Straps and Nails | Zinc | Natural Finish | ✓ | | | ✓ | | |
| NEER™ Aluminum Service Entrance Pulling Ells | Aluminum | Epoxy Powder Coat | ✓ | | | ✓ | | |
| NEER™ Aluminum Entrance Caps | Aluminum | Natural Finish | ✓ | ✓ | | | | |
| NEER™ Service Entrance Caps and Straps | Zinc | Natural Finish | ✓ | | | ✓ | | |
| NEER™ PVC Entrance Caps | PVC | Natural Finish | | | | | | |
| NEER™ Zinc Two Screw Connectors For Service Entrance Cable | Zinc, Steel | Natural Finish, Zinc Plated | ✓ | | | ✓ | | |
| NEER™ Service Entrance Flashings | Steel | Hot Dip Galvanized | ✓ | | | | | |
| NEER™ Service Entrance Wire Holders | Steel | Zinc Plated | ✓ | ✓ | | | | |
| NEER™ Service Entrance Connectors | Steel | Zinc Plated | ✓ | | | | | |
| NEER™ Duct Sealing Compound | Fibrous Compound | | ✓ | | | ✓ | | |

Cable Clamps and Straps



One of the weak links in an electrical system can be the connection point between a box or enclosure and a run of flexible cord, nonmetallic sheathed cable, armored cable or flexible metal conduit. We provide easy-to-install products built with the rugged reliability needed to relieve the stresses and strains concentrated at these termination points.

| Product | Material | Finish | UL LISTED | cUL LISTED | cUL US LISTED | SF | SF _{C US} | Ex |
|-------------------------------------|----------------|-----------------------|-----------|------------|---------------|----|--------------------|----|
| Appleton™ Bus Drop Cable and Clamps | Malleable Iron | Mechanical Galvanized | ✓ | | | | | |
| NEER™ Cable Straps | Aluminum | Natural Finish | ✓ | | | ✓ | | |

Install and maintain quality electrical infrastructure with the most durable electrical products.



Keeping you and your job site safe and efficient.



Appleton™ and O-Z/Gedney™ are cornerstone brands of Emerson's Electrical Apparatus and Lighting business; trusted worldwide to make electrical installations safer, more productive and more reliable.

United States (Headquarters)
Appleton™ Grp LLC
9377 W. Higgins Road
Rosemont, IL 60018
United States
T +1 800 621 1506

Europe
ATX SAS
Espace Industriel Nord
35, rue André Durouchez,
CS 98017
80084 Amiens Cedex 2, France
T +33 3 2254 1390

Canada
EGS Electrical Group Canada Ltd.
99 Union Street
Elmira ON, N3B 3L7
Canada
T +1 888 765 2226

Asia Pacific
EGS Private Ltd.
Block 4008, Ang Mo Kio Ave 10,
#04-16 TechPlace 1,
Singapore 569625
T +65 6556 1100

Latin America
EGS Comercializadora Mexico S
de RL de CV
Calle 10 N°145 Piso 3
Col. San Pedro de los Pinos
Del. Álvaro Obregon
Ciudad de México. 01180
T +52 55 5809 5049

Australia Sales Office
Bayswater, Victoria
T +61 3 9721 0348

China Sales Office
Shanghai
T +86 21 3338 7000


Middle East Sales Office
Dammam, Saudi Arabia
T +966 13 510 3702

Chile Sales Office
Las Condes
T +56 2928 4819

India Sales Office
Chennai
T +91 44 3919 7300

Korea Sales Office
Seoul
T +82 2 3483 1555

 [Emerson.com](https://www.emerson.com)

 [LinkedIn.com/company/emerson](https://www.linkedin.com/company/emerson)

The Emerson logo is a trademark and service mark of Emerson Electric Co. Appleton, O-Z/Gedney, NEER and ETP are registered trademarks of Appleton Grp LLC. All other marks are the property of their respective owners. © 2018 Emerson Electric Co. All rights reserved.



CONSIDER IT SOLVED™