

# Emerson DCMLink Software

## DCMLink Software

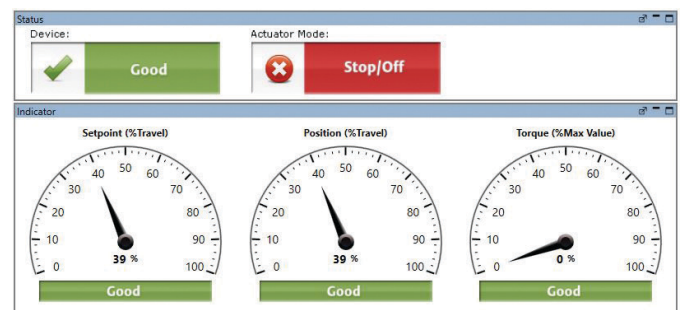
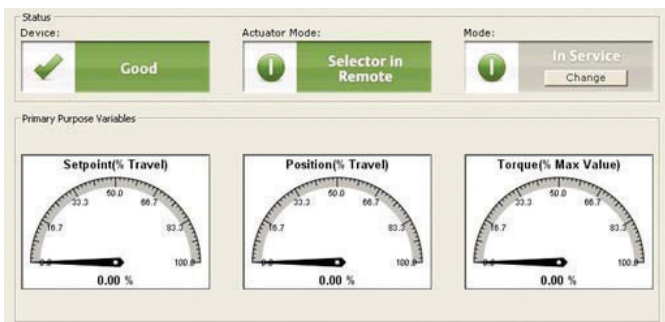
- DCMLink Software is the valve actuation diagnostic and configuration tool for Bettis Electric Actuators and Smart Electro-Hydraulic Operators (EHO).
- Enables users to configure, calibrate, monitor and diagnose all electric actuators from a central location independent of protocol, actuator or host system.
- Enhances plant productivity by unifying all electric actuators on a common platform while allowing plant operators to gain deep insights into asset status and performance in real-time.
- Provides actuator data gathering, condition monitoring, events log and prioritization of actuator alarms in a unified and consistent user interface.



## Benefits

- Integrates with Emerson's PlantWeb™ solution
- Improve maintenance efficiency, and reduce maintenance cost
- Support for WirelessHART, MODBUS and Bluetooth protocols

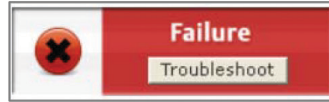
## DCMLink offers a uniform and consistent User Interface (UI)



# Emerson DCMLink Software

## Simplified Easy to Read Alarms Status

- Up to 53 alarms are reported
- Green & Good status = No Active Alarms
- Active alarms categorized into four types per NE-107



Uses universal symbols used for color blindness

## Emerson Business Synergy

- Integrates with Emerson
  - PlantWeb solution
  - AMS Device Manager
  - DeltaV
- PlantWeb compatible alerts, alarms and diagnostics
- Emerson Waveguide compliant
- WirelessHART integration with Rosemount THUM
- Same look and feel (GUI) as Fisher® ValveLink™ software

### Products

XTE3000    M2CP    EHO

RTS CM    MPA    TEC2



### Protocols

Modbus    HART    WirelessHART

### Product Portfolio

EMERSON AMS Suite    DELTAV OVATION SNAP-ON    SOLO

### Features

Database    NAMUR NE-107    Scheduler    PlantWeb™    Diagnostics

**Emerson Actuation Technologies**  
 19200 Northwest Freeway  
 Houston TX 77065  
 USA  
 T +1 281 477 4100  
 F +1 281 477 2809

FLY-02-10-93-0102-EN-US Rev A 11-19



**CONSIDER IT SOLVED™**